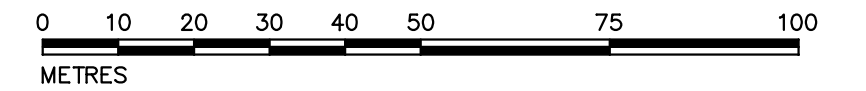


DETAIL
NOT TO SCALE

PLAN OF SURVEY OF
PART OF BLOCK 6
REGISTERED PLAN 4M-1388
CITY OF OTTAWA
SCALE 1:1000



NOTES

BEARINGS SHOWN ON THIS PLAN ARE GRID BEARINGS, AND ARE DERIVED FROM LEICA SMART-NET REAL TIME NETWORK GPS OBSERVATIONS ON OBSERVED REFERENCE POINTS (ORP) 'A' AND 'B' SHOWN HEREON, MTM ZONE 9, (76°30' WEST LONGITUDE).

DISTANCES SHOWN ON THIS PLAN ARE HORIZONTAL GROUND DISTANCES AND CAN BE CONVERTED TO GRID DISTANCES BY MULTIPLYING BY THE COMBINED SCALE FACTOR OF 0.999954

- S.I.B. DENOTES 0.025 SQ., 1.2 LONG, STANDARD IRON BAR
- S.S.I.B. DENOTES 0.025 SQ., 0.6 LONG, SHORT STANDARD IRON BAR
- I.B. DENOTES 0.016 SQ., 0.6 LONG, IRON BAR
- R.I.B. DENOTES ROUND IRON BAR
- DENOTES SURVEY MONUMENT FOUND
- DENOTES SURVEY MONUMENT PLANTED
- WT. DENOTES WITNESS
- S.U. DENOTES SOURCE UNKNOWN
- 1697 DENOTES J.P. SHIPMAN, O.L.S.
- AGM DENOTES ARCHIBALD, GRAY & MCKAY LTD - SEE PLAN OF SURVEY OF PART OF BLOCK 6, PLAN 4M-1388, DATED NOVEMBER 1, 2019 - (NOTE: PLANTED MONUMENTS ARE STAMPED "AGM")
- P1 DENOTES PLAN 4M-1388
- P2 DENOTES PLAN 4R-26208
- GWA DENOTES GUY WIRE ANCHOR
- U.P. DENOTES UTILITY POLE
- U.P.L. DENOTES UTILITY POLE LINE
- TBM DENOTES TEMPORARY BENCHMARK
- E1 DENOTES EASEMENT AS IN INST. OC1253753
- E2 DENOTES EASEMENT AS IN INST. OC1253757
- E3 DENOTES EASEMENT AS IN INST. OC1252525
- E4 DENOTES EASEMENT AS IN INST. OC1265943

METRIC

DISTANCES AND COORDINATES SHOWN ON THIS PLAN ARE IN METRES AND CAN BE CONVERTED TO FEET BY DIVIDING BY 0.3048

SURVEYOR'S CERTIFICATE

- I CERTIFY THAT:
- (1) THIS SURVEY AND PLAN ARE CORRECT AND IN ACCORDANCE WITH THE SURVEY ACT, THE SURVEYORS ACT AND THE LAND TITLES ACT AND THE REGULATIONS MADE UNDER THEM;
 - (2) THE SURVEY WAS COMPLETED ON THE 24th DAY OF JANUARY, 2020.

JANUARY 24, 2020
DATE

J.P. SHIPMAN
ONTARIO LAND SURVEYOR

ELEVATION NOTES

1. ELEVATIONS ARE IN METRES AND ARE GEODETIC, DERIVED FROM GSC BENCHMARK 00199653004 DATUM: NAD 83, ORIG.

2. IT IS THE RESPONSIBILITY OF THE USER OF THIS INFORMATION TO VERIFY THAT THE JOB BENCHMARK HAS NOT BEEN ALTERED OR DISTURBED AND THAT ITS RELATIVE ELEVATION AND DESCRIPTION AGREE WITH THE INFORMATION SHOWN ON THIS DRAWING.

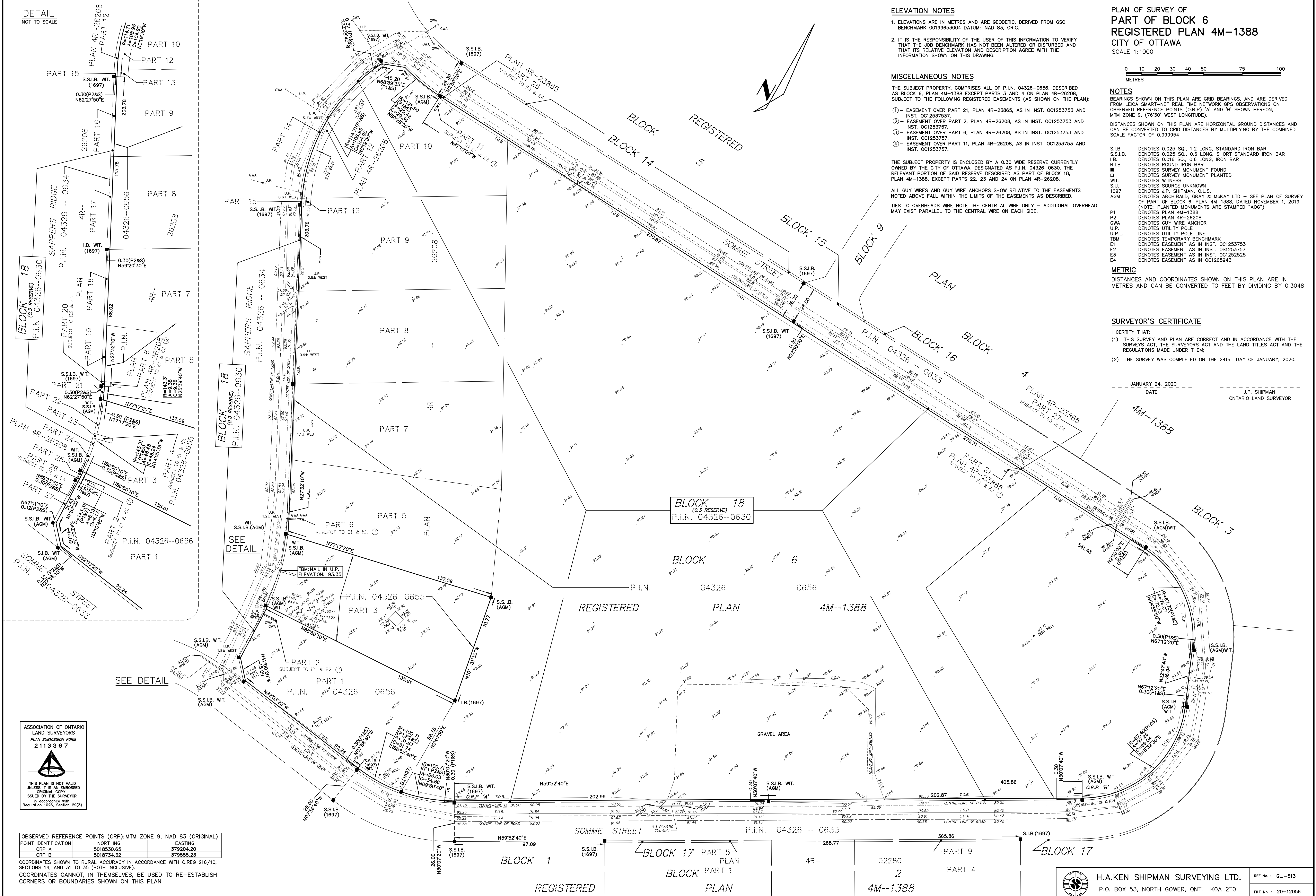
MISCELLANEOUS NOTES

THE SUBJECT PROPERTY, COMPRISES ALL OF P.I.N. 04326-0656, DESCRIBED AS BLOCK 6, PLAN 4M-1388 EXCEPT PARTS 3 AND 4 ON PLAN 4R-26208, SUBJECT TO THE FOLLOWING REGISTERED EASEMENTS (AS SHOWN ON THE PLAN):

- ① - EASEMENT OVER PART 21, PLAN 4R-23865, AS IN INST. OC1253753 AND INST. OC1253757
- ② - EASEMENT OVER PART 2, PLAN 4R-26208, AS IN INST. OC1253753 AND INST. OC1253757
- ③ - EASEMENT OVER PART 6, PLAN 4R-26208, AS IN INST. OC1253753 AND INST. OC1253757
- ④ - EASEMENT OVER PART 11, PLAN 4R-26208, AS IN INST. OC1253753 AND INST. OC1253757.

THE SUBJECT PROPERTY IS ENCLOSED BY A 0.30 WIDE RESERVE CURRENTLY OWNED BY THE CITY OF OTTAWA, DESIGNATED AS P.I.N. 04326-0630. THE RELEVANT PORTION OF SAID RESERVE DESCRIBED AS PART OF BLOCK 18, PLAN 4M-1388, EXCEPT PARTS 22, 23 AND 24 ON PLAN 4R-26208.

ALL GUY WIRES AND GUY WIRE ANCHORS SHOW RELATIVE TO THE EASEMENTS NOTED ABOVE FALL WITHIN THE LIMITS OF THE EASEMENTS AS DESCRIBED. TIES TO OVERHEADS WIRE NOTE THE CENTRAL WIRE ONLY - ADDITIONAL OVERHEAD MAY EXIST PARALLEL TO THE CENTRAL WIRE ON EACH SIDE.



ASSOCIATION OF ONTARIO
LAND SURVEYORS
PLAN SUBMISSION FORM
2113367

THIS PLAN IS NOT VALID
UNLESS IT IS AN EMBOSSED
ORIGINAL COPY
ISSUED BY THE SURVEYOR
IN ACCORDANCE WITH
REGULATION 1026, SECTION 29(3)

POINT IDENTIFICATION	NORTHING	EASTING
ORP A	5018530.65	379204.20
ORP B	5018734.32	379555.23

COORDINATES SHOWN TO RURAL ACCURACY IN ACCORDANCE WITH O. REG 216/10, SECTIONS 14, AND 31 TO 35 (BOTH INCLUSIVE).
COORDINATES CANNOT, IN THEMSELVES, BE USED TO RE-ESTABLISH CORNERS OR BOUNDARIES SHOWN ON THIS PLAN