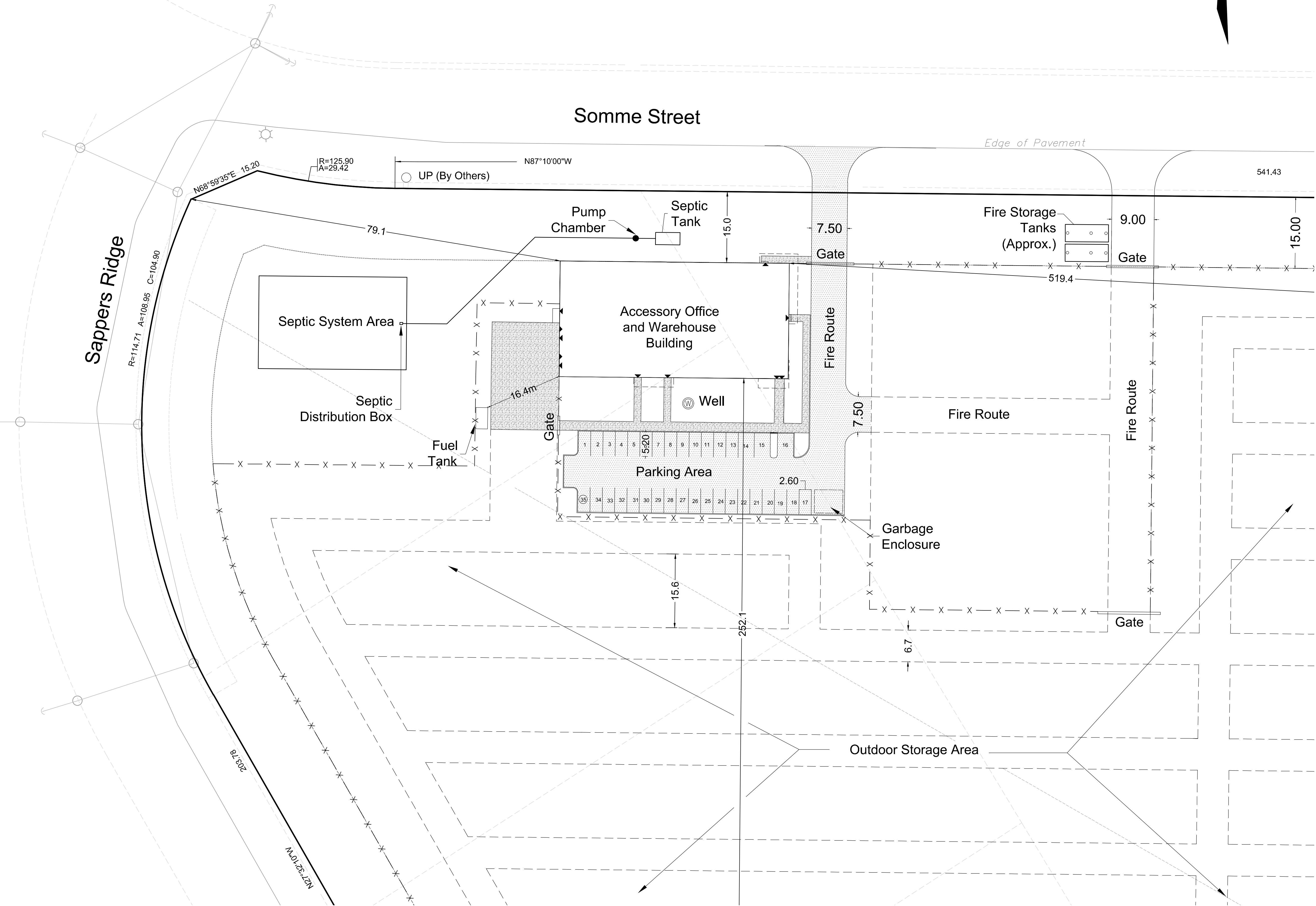


LEGEND

- Property Line
- Zoning Setback Line
- Proposed Curb
- Proposed Security Fence
- Proposed Gate
- Proposed Building Entrance
- Proposed Asphalt Surface
- Proposed Concrete Surface
- Proposed Well
- Proposed Utility Guy Pole (By Others)
- Existing Utility Pole c/w Guy Wire
- Existing Streetlight

Rural Heavy Industrial Zone (RH)		
Performance Standard	Required	Provided
Minimum Lot Width (m)	50	39
Minimum Lot Area (m²)	8,000	178,333
Minimum Front Yard Setback (m)	15	79.1
Minimum Rear Yard Setback (m)	15	519.4
Minimum Interior Side Yard Setback	3	252.1
Minimum Corner Side Yard Setback	15	15.0
Maximum Building Height (m)	50	5.5
Maximum Lot Coverage (%)	50	0.7
Outdoor Storage	a) Outside storage is not permitted within any required front yard or corner side yard; b) Outside storage must be screened from abutting residential uses and public streets by an opaque screen at least 1.8m in height from finished grade.	
Parking		
Parking Spaces	740 m² gfa Office @ 2.4/100m² gfa = 17.8 454 m² gfa Warehouse @ 0.8/100m² gfa = 3.6 Total = 21	35
Loading Spaces	740 m² gfa Office = 0 454 m² gfa Warehouse = 0 Total = 0	0

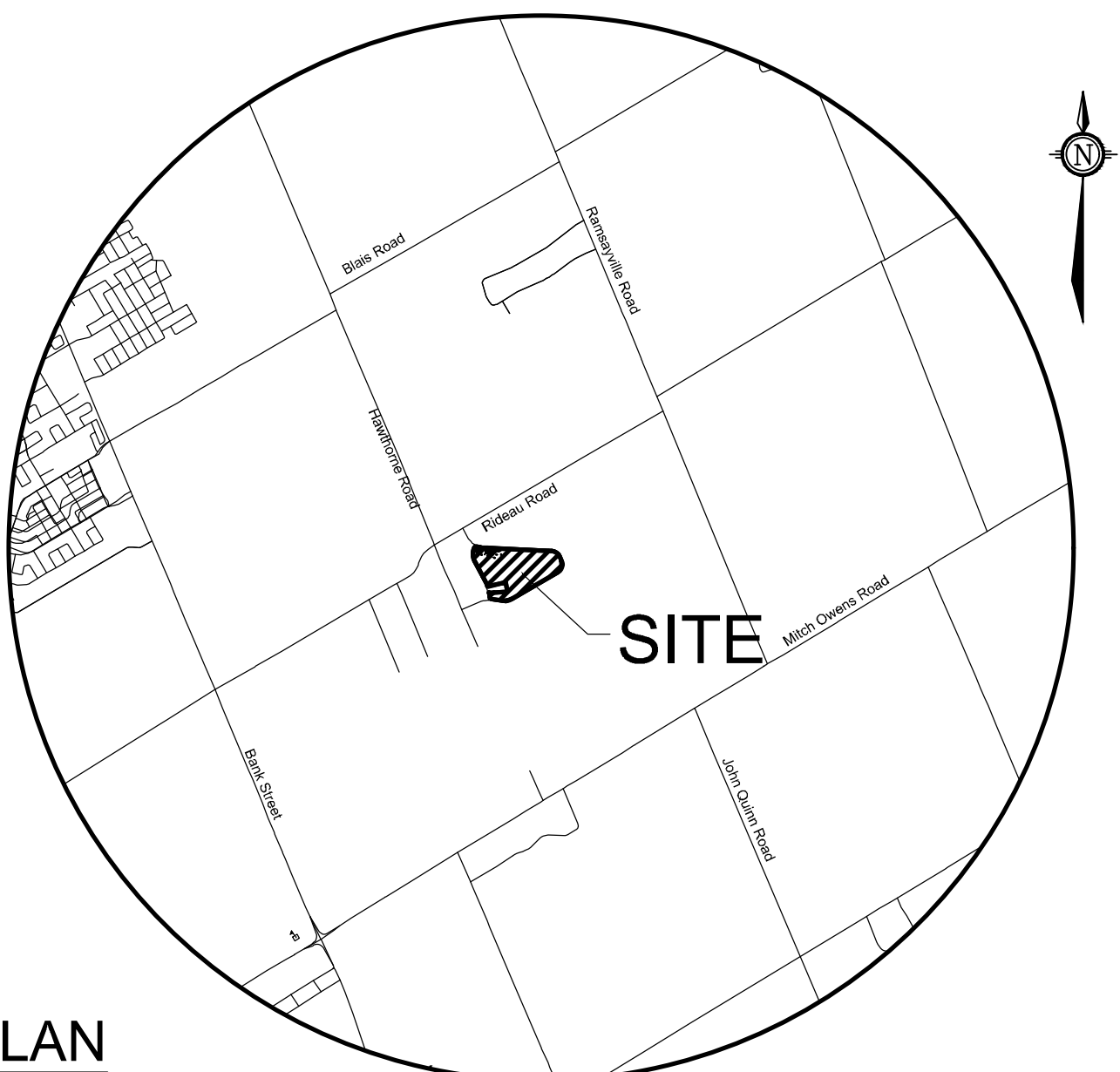


NOTE::
THIS PLAN HAS BEEN COMPILED USING LEGAL INFORMATION OBTAINED FROM
H. A. KEN SHIPMAN SURVEYING LTD., ONTARIO LAND SURVEYORS
PLAN OF SURVEY; DATED JANUARY 24, 2020.
REF No. GL-513, FILE No. 20-12056

APPROVED ☐ REFUSED ☐

THIS ____ DAY OF _____, 20__

ADAM BROWN, MANAGER
DEVELOPMENT REVIEW RURAL,
PLANNING, INFRASTRUCTURE AND ECONOMIC
DEVELOPMENT DEPARTMENT, CITY OF OTTAWA

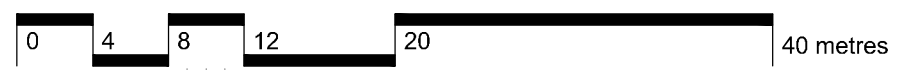


KEYPLAN
NOT TO SCALE

SITE PLAN 2 ENLARGEMENT 300 SOMME STREET

BLOCK 6, RPLAN 4M-1388
CITY OF OTTAWA

14185 Dallas Parkway
Suite 300
Dallas, Texas 75254



SCALE 1:400

2	ISSUED FOR SITE PLAN CONTROL APPLICATION	MAY 28, 20	RP
1	ISSUED TO CLIENT FOR REVIEW	MAY 07, 20	RP
No.	REVISION	DATE	BY

Engineers, Planners & Landscape Architects
Suite 200, 240 Michael Cowpland Drive
Ottawa, Ontario, Canada K2M 1P6

Telephone (613) 254-9643
Facsimile (613) 254-5867
Website www.novatech-eng.com

ISSUED
MAY, 2020

PROJECT No.
119181

DRAWING No.
119181-SP2