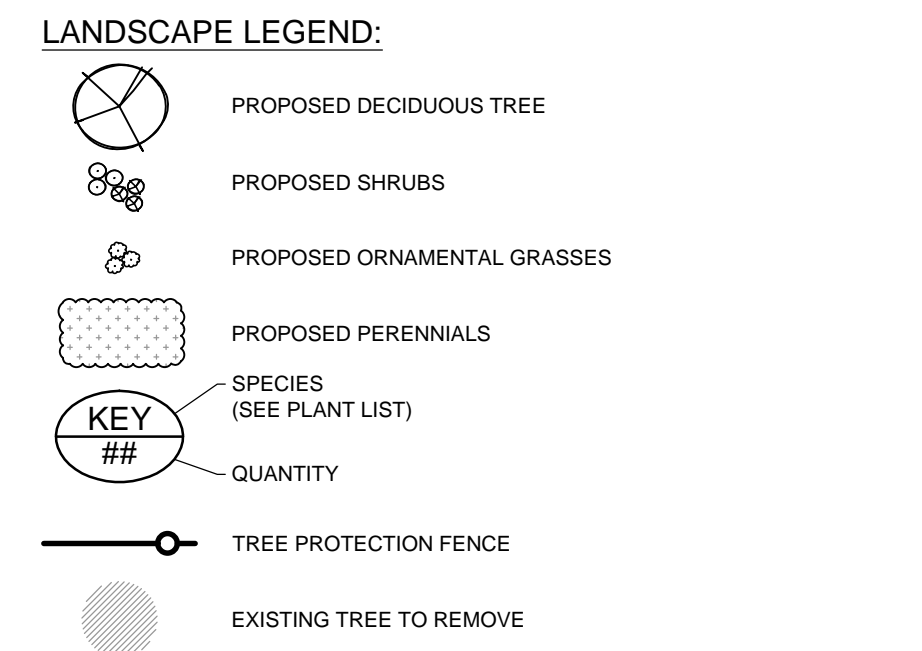


120044 - L1 - Plant List

KEY	QTY	BOTANICAL NAME	COMMON NAME	SIZE	COND.	SPACING
Deciduous Trees						
ARW	3	<i>Acer rubrum 'New World'</i>	New World Red Maple	50mm Cal	WB	As Shown
TCC	4	<i>Tilia cordata 'Corzart'</i>	Corinthian Linden	50mm Cal	WB	As Shown
Deciduous Shrubs						
Aao	5	<i>Amelanchier alnifolia 'Obelisk'</i>	Standing Ovate Saskatoon Berry	125cm Ht	WB	As Shown
Axi	41	<i>Aronia x Low Scape Mound (UCONNAM165)</i>	Low Scape Mound Chokeberry	50cm Ht	PT	As Shown
Hpi	31	<i>Hydrangea paniculata 'Invokoo'</i>	Bobo Dwarf Hydrangea	60cm Ht	PT	As Shown
Hyk	34	<i>Hypericum kalmanianum</i>	Kalm's St. John's Wort	2g	PT	As Shown
Pqi	10	<i>Physocarpus opulifolius 'JEFAM'</i>	Amber Jubilee Ninebark	60cm Ht	PT	As Shown
Ro	32	<i>Rubus odoratus</i>	Flowering Raspberry	2g	PT	As Shown
Smc	9	<i>Spiraea japonica 'Magic Carpet'</i>	Magic Carpet Spiraea	2g	PT	As Shown
Va	27	<i>Viburnum acerifolium</i>	Mapleleaf Viburnum	2g	PT	As Shown
Ornamental Grasses						
cam	5	<i>Calamagrostis acutiflora 'Overdam'</i>	Overdam Feather Reed Grass	1g	PT	45cm O.C.
ckf	12	<i>Calamagrostis acutiflora 'Karl Foerster'</i>	Karl Foerster Feather Reed Grass	1g	PT	As Shown
Perennials						
gar	20	<i>Geranium x 'Azure Rush'</i>	Azure Rush Cranebill	1g	PT	45cm O.C.
hny	76	<i>Hemerocallis 'Hyperion'</i>	Hyperion Daylily	1g	PT	45cm O.C.
hw	52	<i>Hemerocallis 'Little Wine Cup'</i>	Little Wine Cup Daylily	1g	PT	45cm O.C.
hpb	60	<i>Hemerocallis 'Pandora's Box'</i>	Pandora's Box Daylily	1g	PT	45cm O.C.
hea	35	<i>Hosta 'Earth Angel'</i>	Earth Angel Hosta	1g	PT	100cm O.C.
ssm	36	<i>Sedum spectabile 'Matrona'</i>	Matrona Showy Stonecrop Sedum	1g	PT	45cm O.C.

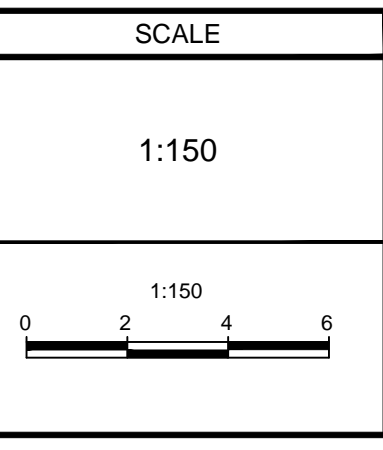


- PLANTING NOTES**
- This drawing shall be read in conjunction with all relevant **Architectural**, **Engineering**, and related drawings and documents.
 - Refer to **Engineering Drawings for Grading**. Provide drainage as indicated in grading plan. Round all tops and toes of slopes, smoothly. Compact all areas to 95% Standard Proctor Density unless otherwise noted.
 - Refer to **Architectural Drawings** for site layout.
 - Refer to **Engineering Drawings** for site servicing.
 - Contractor must contact utility companies for locates prior to excavation or planting.
 - It is essential to use the plans and details in conjunction with the specifications and notes.
 - Existing trees to be retained shall be protected according to the contract detail and specifications.
 - Plant material shall be No. 1 Grade and shall comply with Canadian Standards for Nursery Stock (latest edition) published by the Canadian Nursery Landscape Association.
 - Use plant material with strong fibrous root system free of disease, defects or injuries, and structurally sound. Use trees with straight trunks, well and characteristically branched for species. Obtain approval from consultant of plant material at source prior to digging. All trees and shrubs shall be container grown, potted, W/B or B/B, as indicated on Plant List. Bare root planting will only be acceptable for certain species and as approved by the Landscape Architect.
 - Plant material substitutions shall not be permitted without the written approval from the consultant, with 48 hours notice, prior to shipping plant material.
 - Plant locations are schematic / approximate only. **Contractor shall stake out locations on site for approval by the Landscape Architect prior to installation.** The illustrated number of plants shown in the Planting Plan supersedes the estimated number in the Plant List. Contractor to report any discrepancies to the Landscape Architect prior to installation. Contractor will assume full responsibility if the Landscape Architect is not notified.
 - Shrubs, Perennials, Vines, and Groundcovers shall be planted in a continuous planting bed of 450mm depth with approved topsoil covered with 75mm depth shredded bark mulch.
 - Ensure trees are thoroughly watered following planting. Monitor material and ensure adequate moisture until acceptance.
 - In heavy clay or poorly drained soils, set root ball with root collar 75-100mm higher than finished grade.
 - Sod and/or seed areas to receive 100mm depth topsoil as specified. Sod shall be No. 1 Kentucky Bluegrass Sod grown from minimum mixture of 3 Kentucky Bluegrass cultivars. Quality and source shall comply with Canadian Standards for Nursery Stock, Section 17, (latest edition) published by the Canadian Nursery Landscape Association. Unless otherwise specified, turf is to be maintained by the contractor until a second cutting is accepted by the Landscape Architect.
 - Apply the following mineral fertilizer unless soil tests show other requirements: Sodded areas - (8-32-16) 8% Nitrogen, 32% Phosphorus, 16% Potash at a rate of 350kg/ha. - Planting Beds - (8-32-16) - 8% Nitrogen, 32% Phosphorus, 16% Potash as per manufacturer specifications.
 - Reinstate all areas damaged or disturbed beyond the Limit of Work.
 - Refer to specifications: NOVA 8020 Imported Topsoil NOVA 8030 Sod NOVA 8040 Seed and Cover (Hydraulic Seeding) NOVA 8060 Trees, Shrubs and Groundcover Planting NOVA 8061 Maintenance of Planting

NOTE:
THE POSITION OF ALL POLE LINES, CONDUITS, WATERMANS, SEWERS AND OTHER UNDERGROUND AND OVERGROUND UTILITIES AND STRUCTURES IS NOT NECESSARILY SHOWN ON THE CONTRACT DRAWINGS, AND WHERE SHOWN, THE ACCURACY OF THE POSITION OF SUCH UTILITIES AND STRUCTURES IS NOT GUARANTEED. BEFORE STARTING WORK, DETERMINE THE EXACT LOCATION OF ALL SUCH UTILITIES AND STRUCTURES AND ASSUME ALL LIABILITY FOR DAMAGE TO THEM.

PRELIMINARY

No.	REVISION	DATE	BY
2.	ISSUED FOR SITE PLAN APPLICATION	APR 24/20	RGJ
1.	COORDINATION	APR 23/20	RGJ



DESIGN

DESIGN	RGJ
CHECKED	RGJ
DRAWN	MEL
CHECKED	RGJ
APPROVED	RGJ

FOR REVIEW ONLY

NOVATECH
Engineers, Planners & Landscape Architects
Suite 200, 240 Michael Cowpland Drive
Ottawa, Ontario, Canada K2M 1P6
Telephone (613) 254-9643
Facsimile (613) 254-5867
Website www.novatech-eng.com

LOCATION CITY OF OTTAWA SOUTHMINSTER	PROJECT No. 120044-00
DRAWING NAME LANDSCAPE PLAN	REV # 2
	DRAWING No. 120044-L1