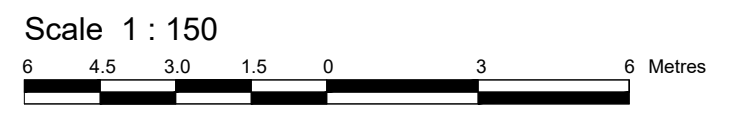
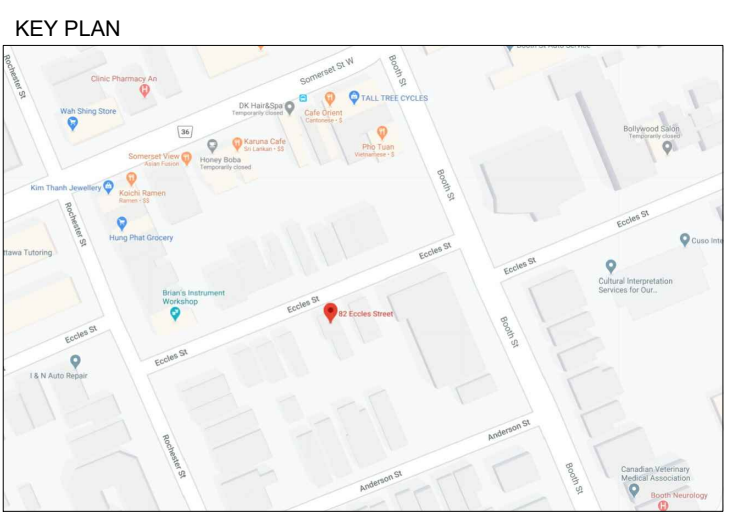


- NOTES FOR CONTRACTOR**
1. The Contractor is to respect and adhere to the Erosion & Sediment control measures set by the Rideau Conservation Authority.
 2. The Contractor is to respect and adhere to the Erosion & Sediment control measures set by the Ontario Provincial Standards i.e., ref., OPSP 219.110 & OPSS 805 but not limited to these.
 3. The Contractor is to adhere to the Erosion & Sediment Plan and notes herein.
 4. The Contractor is to limit and restrict his area work or minimize this, when it comes to "clearing & grubbing".
 5. The Contractor is to inspect the silt fencing & barriers on a daily basis, for completeness and integrity. (Note the "toe in" detail in the OPSS).
 6. The Contractor is to "make good" any area that can be made good because of construction progress. This is not to be left disturbed for an unnecessary period of time.
 7. The Contractor must not re-fuel or clean equipment near catch basins or a water course.
 8. The Contractor is to install filter cloth between the catch basin grate and frame.
 9. The Contractor is to repair and reinstate any damaged lengths of the silt fencing and barriers.
 10. The Contractor is to plan construction around "wet days".
 11. In the event of rainfall, the Contractor is to visit the site and ensure all silt fencing and barriers are adequate and satisfactory to an official inspector or the Eng.
 12. Silt accumulation, behind the silt fencing and barriers, should be removed when it reaches 1/3 height of fencing.
 13. The Contractor is to provide sediment traps & basins during de-watering.
 14. When the silt fencing and barriers impede construction progress, the restricting section may be removed during the day but must be reinstated during the night.
 15. The Contractor can remove the silt fencing and barriers when directed by the appropriate inspector or the Eng.



Metric
DISTANCES SHOWN ON THIS PLAN ARE IN METRES AND CAN BE CONVERTED TO FEET BY DIVIDING BY 0.3048

- Notes & Legend**
- Denotes Survey Monument Planted
 - Survey Monument Found
 - SIB Standard Iron Bar
 - SSIB Short Standard Iron Bar
 - IB Iron Bar
 - CC Cut Cross
 - CP Concrete Pin
 - (WIT) Witness
 - (AOG) Annis, O'Sullivan, Vollebek Ltd.
 - Meas. Measured
 - (P1) Registered Plan 55
 - (P2) (647) Plan October 19, 2010
 - (P3) (725) Plan June 12, 1986
 - (P4) (AOG) Plan May 31, 1984
 - (P5) Plan 4R-20351
 - (P6) Plan 4R-25409
 - (P7) Plan 5R-11642
 - BF Board Fence
 - CLF Chain link Fence
 - UP Utility Pole
 - AN Anchor
 - GM Gas Meter
 - B Bollard
 - DS Downspout
 - ⊕ Water Shut off Valve
 - ⋯ Silt Fence Per OPSP 219.110.



REVISION DESCRIPTION	DATE
1 FOR REVIEW	APRIL 20, 2020

82 ECCLES ST., OTTAWA, ON
EROSION & SEDIMENT CONTROL PLAN

CONSULTANT
Derrick Clark
 Professional engineer.
 Tel.: 613-869-0523
 Email: derrick.clark@rogers.com

E1



ONTARIO PROVINCIAL STANDARD DRAWING
 Nov 2015 | Rev 2
LIGHT-DUTY SILT FENCE BARRIER
 OPSP 219.110