

METRIC
 DISTANCES AND ELEVATIONS SHOWN ON THIS PLAN ARE IN METRES
 AND CAN BE CONVERTED TO FEET BY DIVIDING BY 0.3048

TOPOGRAPHIC SURVEY OF
 LOTS 180 & 181
 REGISTERED PLAN 88291
 CITY OF OTTAWA

SCALE 1 : 150
 0 1 2 5 10 15 metres

FAIRHALL, MOFFATT & WOODLAND LIMITED
 ONTARIO LAND SURVEYORS

LEGEND

- - SURVEY MONUMENT FOUND
- IB - IRON BAR
- CP - CONCRETE PIN
- (P) - REGISTERED PLAN 88291
- (M) - MEASURED
- (S) - SET
- (857) - FAIRHALL, MOFFATT & WOODLAND LIMITED, O.L.S.
- (1287) - FARLEY, SMITH & MURRAY SURVEYING LTD., O.L.S. (REF. JOB 141-98)
- (GCM) - G. C. MCROSTIE, O.L.S. (REF FB-135)
- (HRF) - H. R. FARLEY, O.L.S. (PLAN OF #1480 SCOTT STREET, DATED SEPTEMBER 26, 1979)
- (SU) - SOURCE UNKNOWN
- DIA. - DIAMETER
- PIN - PROPERTY IDENTIFIER NUMBER
- CB - CATCH BASIN
- MH - MANHOLE
- FH - FIRE HYDRANT
- UP - UTILITY POLE
- WV - WATER VALVE
- ↑ - GUY WIRE AND ANCHOR
- - - - - SIGN
- - CONIFEROUS TREE
- - DECIDUOUS TREE
- - - - - WATERMAIN
- - - - - OVERHEAD UTILITY WIRES
- - - - - GAS MAIN
- - - - - STORM SEWER
- - - - - SANITARY SEWER
- - - - - CURB

ELEVATION NOTES

1. ELEVATIONS SHOWN HEREON ARE REFERRED TO GEODETIC DATUM (CGVD28).
2. ELEVATIONS FOR MANHOLE COVERS AND CATCH BASINS HAVE TO BE INDEPENDENTLY CONFIRMED BEFORE THEY CAN BE ACCEPTED FOR FINAL DESIGN OR CONSTRUCTION PURPOSES.
3. IT IS THE RESPONSIBILITY OF THE USER OF THIS INFORMATION TO VERIFY THAT THE JOB BENCHMARK HAS NOT BEEN ALTERED OR DISTURBED AND THAT ITS RELATIVE ELEVATION AND DESCRIPTION AGREE WITH THE INFORMATION SHOWN ON THIS DRAWING.

UTILITY NOTES

1. THIS DRAWING CANNOT BE ACCEPTED AS ACKNOWLEDGING ALL OF THE UNDERGROUND UTILITIES AND IT WILL BE THE RESPONSIBILITY OF THE USER TO CONTACT THE RESPECTIVE UTILITY AUTHORITIES FOR CONFIRMATION OR LOCATION.
2. UNDERGROUND UTILITIES, AS REPORTED ON THIS DRAWING, ARE NOT BASED ON AN ACTUAL 'FIELD LOCATE' BY THE RESPECTIVE UTILITY AGENCIES BUT HAVE BEEN COMPILED FROM DATA OBTAINED FROM THE FOLLOWING SOURCE:
 - a) CITY OF OTTAWA PUBLIC UTILITY REGISTRY
3. BEFORE ANY WORK INVOLVING PROBING, EXCAVATING, ETC., A FIELD LOCATION OF UNDERGROUND PLANT BY THE PERTINENT UTILITY AGENCY IS MANDATORY.

NOTES

1. BEARINGS ARE GRID DERIVED FROM CITY OF OTTAWA HORIZONTAL CONTROL 2011-0053 (N 5029817.068, E 365072.870) AND 2011-0054 (N 5029910.642, E 365229.975) AND ARE REFERRED TO THE CENTRAL MERIDIAN 76°30'W LONGITUDE, MTM ZONE 9 (NAD83 ORIGINAL).
2. DISTANCES ARE GROUND AND CAN BE CONVERTED TO GRID BY MULTIPLYING BY THE COMBINED SCALE FACTOR 0.999940.

ASSOCIATION OF ONTARIO
 LAND SURVEYORS
 PLAN SUBMISSION FORM
 2101826

THIS PLAN IS NOT VALID
 UNLESS IT IS AN EMBOSSED
 ORIGINAL COPY
 ISSUED BY THE SURVEYOR
 IN ACCORDANCE WITH
 REGULATION 1006, SECTION 29 (3).


SURVEYOR'S CERTIFICATE

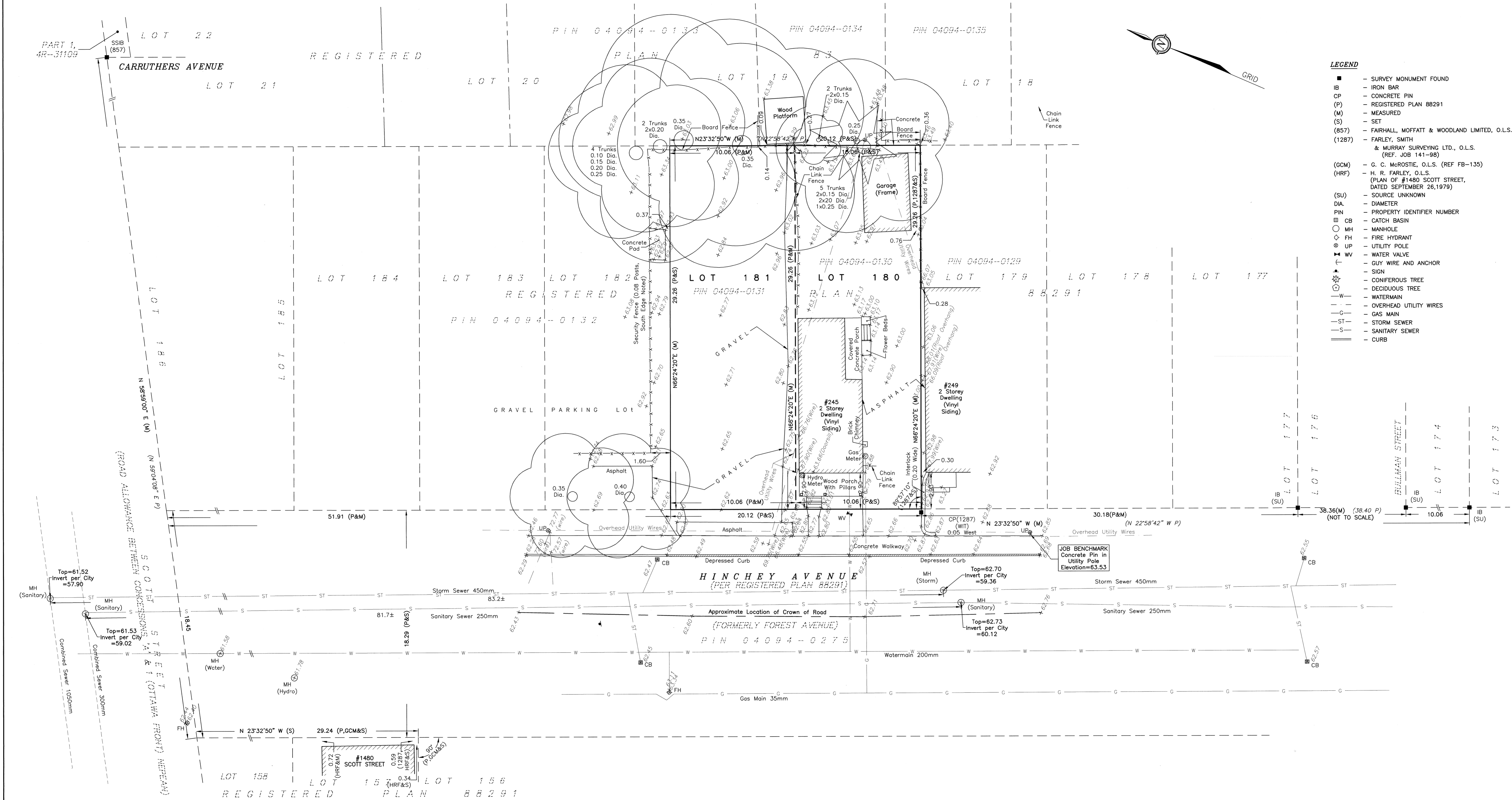
I CERTIFY THAT:
 1. THIS SURVEY AND PLAN ARE CORRECT AND IN ACCORDANCE WITH THE SURVEYS ACT, THE SURVEYORS ACT, THE LAND TITLES ACT AND THE REGULATIONS MADE UNDER THEM.

2. THE SURVEY WAS COMPLETED ON SEPTEMBER 3, 2019.

2019/09/03
 DATE

JOHN H. GUTRI
 ONTARIO LAND SURVEYOR

Fairhall Moffatt & Woodland LIMITED ONTARIO LAND SURVEYORS Surveying and Land Information Services 100-600 TERRY FOX DRIVE, KANATA, ONTARIO K2L 4B6 TEL: (613) 591-2590 FAX: (613) 591-1495 www.fmw.on.ca		JOB No. 2 2 9 0 0 0
		E 365139, N 5029755
REFERENCE No. 22-88291		S:\J08522900\DWG 2019-09-26 tp290z.dwg (kb/aa)



© COPYRIGHT 2019. REPRODUCTION, ALTERATION OR DISTRIBUTION OF THIS PLAN WITHOUT THE WRITTEN CONSENT OF FAIRHALL, MOFFATT & WOODLAND LIMITED IS PROHIBITED.