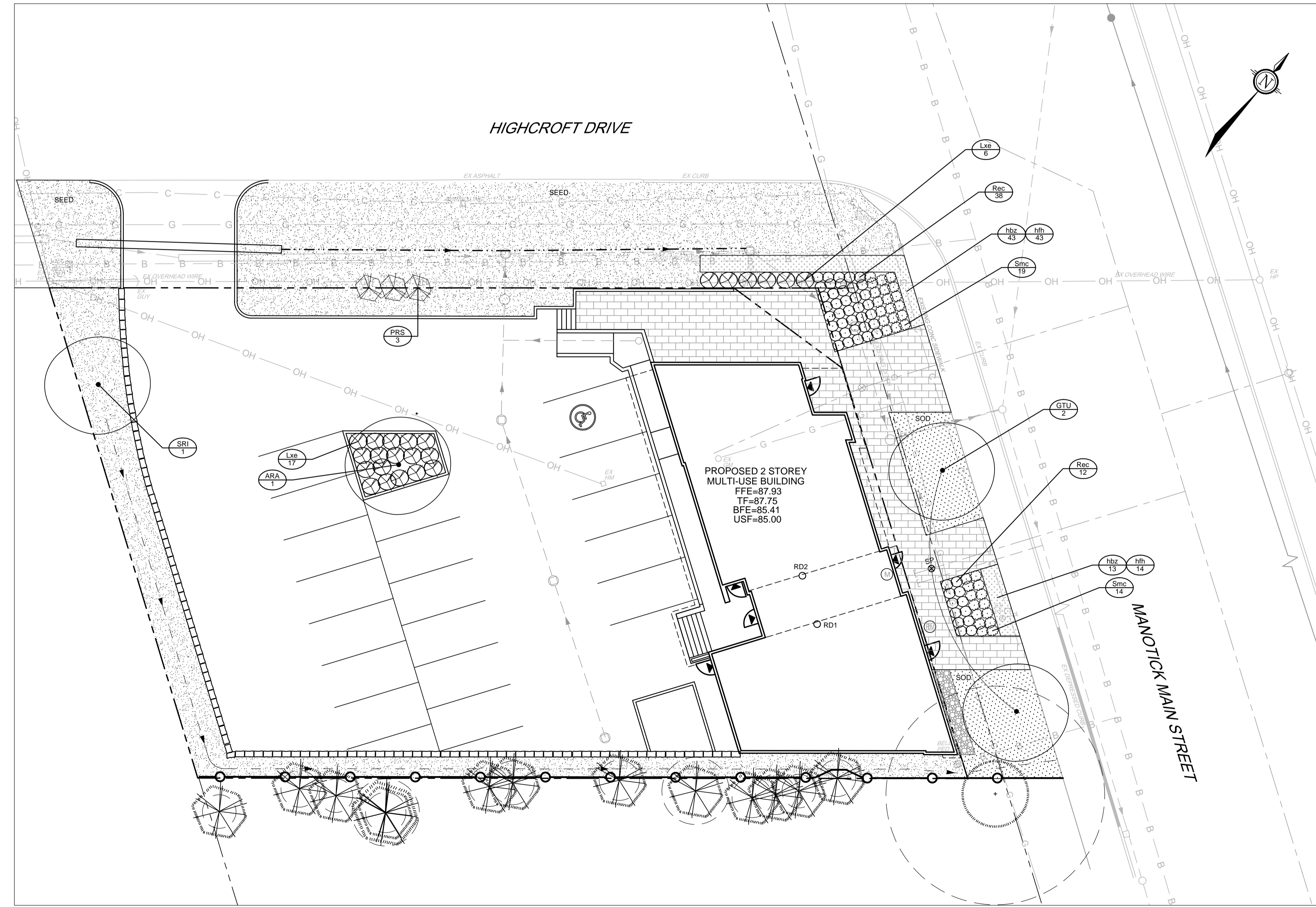


PLANTING NOTES

- This drawing shall be read in conjunction with all relevant Architectural, Engineering, and related drawings and documents.
- Refer to Engineering Drawings for Grading. Provide drainage as indicated in grading plan. Round all tops and toes of slopes, smoothly. Compact all areas to 95% Standard Proctor Density unless otherwise noted.
- Refer to Architectural Drawings for site layout.
- Refer to Engineering Drawings for site servicing.
- Contractor must contact utility companies for locates prior to excavation or planting.
- It is essential to use the plans and details in conjunction with the specifications and notes.
- Existing trees to be retained shall be protected according to the contract detail and specifications.
- Plant material shall be No. 1 Grade and shall comply with Canadian Standards for Nursery Stock (latest edition) published by the Canadian Nursery Landscape Association.
- Use plant material with strong fibrous root system free of disease, defects or injuries, and structurally sound. Use trees with straight trunks, well and characteristically branched for species. Obtain approval from consultant of plant material at source prior to digging. All trees and shrubs shall be container grown, potted, W/B or B/B, as indicated on Plant List. Bare root planting will only be acceptable for certain species and as approved by the Landscape Architect.
- Plant material substitutions shall not be permitted without the written approval from the consultant, with 48 hours notice, prior to shipping plant material.
- Plant locations are schematic / approximate only. Contractor shall stake out locations on site for approval by the Landscape Architect prior to installation. The illustrated number of plants shown in the Planting Plan supersedes the estimated number in the Plant List. Contractor to report any discrepancies to the Landscape Architect prior to installation. Contractor will assume full responsibility if the Landscape Architect is not notified.
- Shrubs, Perennials, Vines, and Groundcovers shall be planted in a continuous planting bed of 450mm depth with approved topsoil covered with 75mm depth shredded bark mulch.
- Ensure trees are thoroughly watered following planting. Monitor material and ensure adequate moisture until acceptance.
- In heavy clay or poorly drained soils, set root ball with root collar 75-100mm higher than finished grade.
- Sod and/or seed areas to receive 100mm depth topsoil as specified. Sod shall be No. 1 Kentucky Bluegrass Sod grown from minimum mixture of 3 Kentucky Bluegrass cultivars. Quality and source shall comply with Canadian Standards for Nursery Stock, Section 17, (latest edition) published by the Canadian Nursery Landscape Association. Unless otherwise specified, turf is to be maintained by the contractor until a second cutting is accepted by the Landscape Architect.
- Apply the following mineral fertilizer unless soil tests show other requirements: Sodded areas - (8-32-16) 8% Nitrogen, 32% Phosphorus, 16% Potash at a rate of 350kg/ha. Planting Beds - (8-32-16) - 8% Nitrogen, 32% Phosphorus, 16% Potash as per manufacturer specifications.
- Reinstate all areas damaged or disturbed beyond the Limit of Work.
- Refer to specifications:
NOVA 8020 Imported Topsoil
NOVA 8030 Sod
NOVA 8040 Seed and Cover (Hydraulic Seeding)
NOVA 8060 Trees, Shrubs and Groundcover Planting
NOVA 8061 Maintenance of Planting



119234-L-1 Plant List

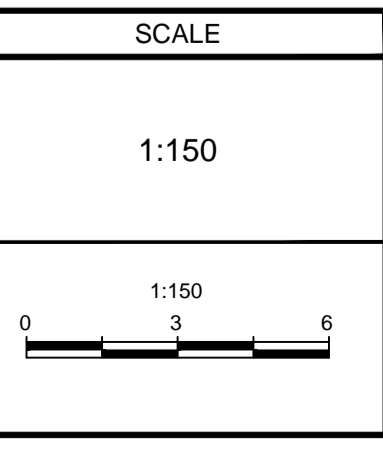
KEY	QTY	BOTANICAL NAME	COMMON NAME	SIZE	COND	SPACING
Coniferous Trees						
PRS	3	<i>Picea abies 'Rubra Spicata'</i>	Red-tipped Norway Spruce	6gal	PT	As Shown
Deciduous Trees						
ARA	1	<i>Acer rubrum 'Autumn Spire'</i>	Autumn Spire Red Maple	50mm Cal	WB	As Shown
GTU	2	<i>Gleditsia triacanthos var. inermis 'Sunburst'</i>	Sunburst Honeylocust	50mm Cal	WB	As Shown
SRI	1	<i>Syringa reticulata 'Ivory Silk'</i>	Ivory Silk Japanese Tree Lilac	50mm Cal	WB	As Shown
Deciduous Shrubs						
Lxe	23	<i>Lonicera xylosteum 'Emerald Mound'</i>	Emerald Mound Honeysuckle	40cm Ht	PT	As Shown
Rec	50	<i>Rosa Easy Elegance 'Bai yipo'</i>	Easy Elegance Calypso	2g	PT	As Shown
Smc	33	<i>Spiraea japonica 'Magic Carpet'</i>	Magic Carpet Spirea	2g	PT	As Shown
Perennials						
hbx	56	<i>Hemerocallis 'Bonzanz'</i>	Bonzanz Daylily	1g	PT	45cm O.C.
hfh	57	<i>Hemerocallis 'Frans Hals'</i>	Frans Hals Daylily	1g	PT	45cm O.C.

NOTE:
THE POSITION OF ALL POLE LINES, CONDUITS, WATERMANS, SEWERS AND OTHER UNDERGROUND AND OVERGROUND UTILITIES AND STRUCTURES IS NOT NECESSARILY SHOWN ON THE CONTRACT DRAWINGS, AND WHERE SHOWN, THE ACCURACY OF THE POSITION OF SUCH UTILITIES AND STRUCTURES IS NOT GUARANTEED. BEFORE STARTING WORK, DETERMINE THE EXACT LOCATION OF ALL SUCH UTILITIES AND STRUCTURES AND ASSUME ALL LIABILITY FOR DAMAGE TO THEM.

NOT FOR CONSTRUCTION

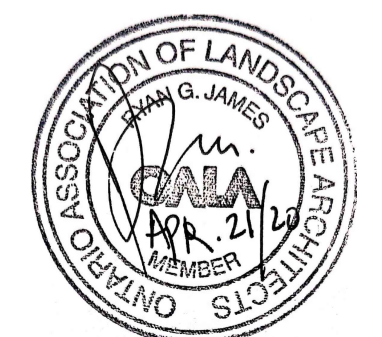
OWNER INFORMATION
CEDAR SANDS HOLDINGS INC.
C/O STEVEN JAMES MENARD
184 REDPATH DRIVE
OTTAWA, ONTARIO
K2G 6K5

No.	REVISION	DATE	BY
2.	ISSUED FOR SITE PLAN APPLICATION	APR 21/20	RGJ
1.	ISSUED FOR COORDINATION	MAR 31/20	RGJ



DESIGN	RGJ
CHECKED	RGJ
DRAWN	MEL
CHECKED	RGJ
APPROVED	RGJ

FOR REVIEW ONLY



NOVATECH
Engineers, Planners & Landscape Architects
Suite 200, 240 Michael Cowpland Drive
Ottawa, Ontario, Canada K2M 1P6
Telephone (613) 254-9643
Facsimile (613) 254-5867
Website www.novatech-eng.com

LOCATION		DRAWING NAME	
CITY OF OTTAWA 5506 MAIN STREET MANOTICK		LANDSCAPE PLAN	
PROJECT No.	119234	REV	REV # 2
DRAWING No.		119234-L	