

- ### Notes & Legend
- Denotes Survey Monument Planted
 - " Survey Monument Found
 - (WIT) " Witness
 - Meas. " Measured
 - MH-S " Maintenance Hole (Sanitary)
 - S — " Underground Sanitary Sewer
 - W — " Underground Water
 - b — " Underground Bell
 - c — " Underground Gas
 - CB " Catch Basin
 - FH " Fire Hydrant
 - WV " Water Valve
 - TOG " Top of Grate
 - ☼ " Coniferous Tree
 - CLF " Chain Link Fence
 - BF " Board Fence
 - PO-M " Metal Pole
 - +65.00 " Location of Existing Elevations
 - +65.00 " Location of Proposed Elevations
 - " Property Line
 - Inv. " Invert
 - Gr " Grass
 - As " Asphalt
 - Pv " Paved/Interlocking
 - DS " Proposed Downspout
 - TOW " Top of Wall
 - BOW " Bottom of Wall
 - TOC " Top of Curb
 - BOC " Bottom of Curb

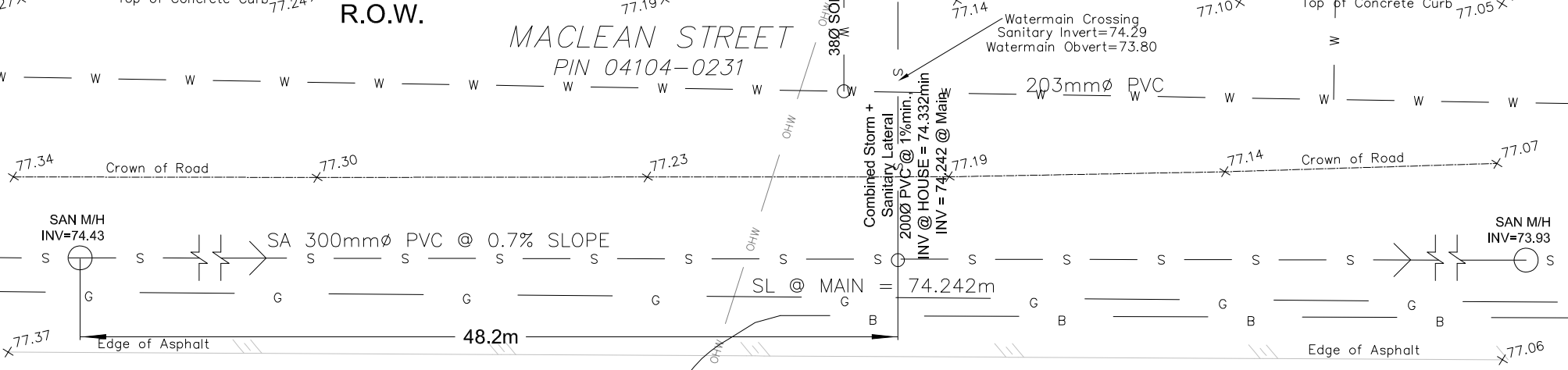
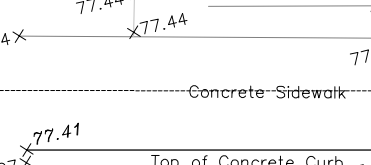
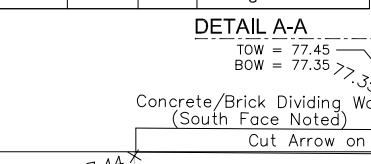
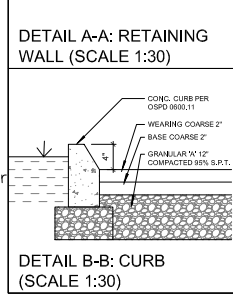
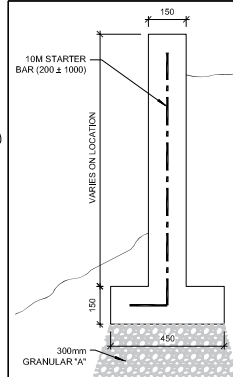
- ### CONSTRUCTION NOTES:
- 1) Metric Note:
Distances and coordinates on this plan are in metres and can be converted to feet by dividing by 0.3048.
 - 2) Servicing to Be:
-38mm Ø soft copper, type K water service complete with curb stop located 300mm outside the property line within the boulevard.
(Water service to have more than 2.4m of cover or insulated as per City of Ottawa Standard W22)
-200mm Ø PVC SDR 28 combined storm + sanitary service @ 1% slope min. + B.W. Valve
-Min. cover to services 2.4m or insulation as per City of Ottawa drawing S14, S14.1, S14.2
-Connection @ main = invert connection (see plan for invert level)
 - 3) Hard Surface Areas:
All proposed hard surface areas are to be permeable as per City of Ottawa Std. Dwg. SC27.
 - 4) No proposed alterations to grade on or beyond property line.
 - 5) Grading between 2%-7% or terrace to 3H:1V max.
 - 6) Trees to be protected before and during construction.
 - 7) Downspouts (DS) within 1.5m of property line. Must be equipped with splash pad. All downspouts to discharge to Right of Way.
 - 8) No excavation below grade to occur.
 - 9) RW shown in West, offset = 0.3m from lot line.
 - 10) Backwater to be installed on sanitary and storm laterals.
 - 11) Weeping tile connected to sanitary lateral.
 - 12) Curb to conform to OPSD 0600.1100.

38mm DIAMETER WATER SERVICE

Station (m)	Finished Grade	Top of W/M	Item
0+000	77.10	74.6	38mm Tee of 203mm Ø Watermain
0+003.8	77.36	74.96	Water Shut off Valve (Stand Post)
0+003.4	77.40	75.9	Entrance to the Building

PROPOSED 3-STOREY APARTMENT BUILDING

TOF = 77.82m
 USF = 74.642m MIN.
 ROOF = 89.95m
 ROOF = FLAT/GREEN ROOF



EAU STRUCTURAL & ENVIRONMENTAL SERVICES

Ottawa, ON
K1Y 4P9
Tel.: 613-869-0523

GRADING & DRAINAGE PLAN
7 MACLEAN STREET
OTTAWA, ON K1S 3E8

Plan number:
C1

3 Revised 2020-04-26

2 Revised 2020-01-29

1 For Review 2020-01-19

No. Revision Date

Drawn by: E.J.

Date: Apr. 26, 2020

Checked By: D.C.

Scale: 1:100