

V:\0160401317_CBDO (Kanata design)\drawing\160401317-03.dwg
2023/03/24 3:16 PM by: Shar, MBO

ORIGINAL SHEET - ARCH D

SEWER AND WATERMAIN CROSSING TABLE									
CROSSING	STM INV	STM OBV	SAN INV	SAN OBV	WTR TOP	WTR BTM	COMMENTS		
▲	95.09(94.92)	96.59(96.76)	94.23	94.43	94.65	94.65	WATER SERVICE CROSSING BETWEEN SAN AND STORM SEWER		
▲	95.05(94.88)	96.55(96.72)	94.36	94.61	93.66	93.86	WATERMAIN CROSSING UNDER SANITARY AND STORM SEWER		
▲	95.04(94.87)	96.54(96.71)	94.45	94.70			SANITARY SEWER CROSSING STORM SEWER		
▲	96.01	96.16	96.01	96.15	95.15	94.95	SANITARY AND STORM SERVICE CROSSING WATERMAIN		
▲	95.98	96.13	94.49	94.74			STORM SERVICE CROSSING SANITARY SEWER		
▲	95.61(95.53)	96.06(96.14)	96.30	96.44			SANITARY SERVICE CROSSING STORM SEWER		
▲	95.58(95.50)	96.03(96.11)	94.48	94.73	93.98	93.83	WATER SERVICE CROSSING UNDER STORM AND SAN SEWER		
▲	96.05	96.25	94.66	94.91	95.20	95.15	CB LEAD CROSSING SANITARY SEWER AND WATER SERVICE		
▲	96.33	96.48	96.10	96.24	95.48	95.15	SANITARY AND STORM SERVICE CROSSING WATER SERVICE		

* BRACKETS DENOTE ADJUSTED VALUE WITH CONCRETE PIPE THICKNESS

200mmØ WATERMAIN A			
STATION	FINISHED GRADE	TOP OF W/M	ITEM
0+000	97.82	95.504	CONNECT TO EX. 200mmØ WATERMAIN STUB
0+011.3	97.79	95.390	50mmØ TVS PEX TUBING BUILDING X WATER SERVICE
0+020	97.68	95.280	TOP OF PIPE
0+040.6	97.42	95.020	45° VERTICAL BEND
0+042.1	97.41	93.660	45° VERTICAL BEND
0+043.6	97.39	93.660	45° HORIZONTAL BEND
0+049.6	97.40	93.660	45° HORIZONTAL BEND
0+051.1	97.45	93.660	45° VERTICAL BEND
0+052.6	97.49	95.090	45° VERTICAL BEND
0+054.8	97.47	95.070	150mmØ WATER SERVICE TEE
0+060	97.61	95.210	TOP OF PIPE
0+080	97.80	95.400	TOP OF PIPE
0+094.6	97.69	95.290	150mmØ FIRE HYDRANT TEE
0+096.9	97.71	95.310	200mmØ VALVE AND VALVE BOX
0+099.1	97.68	95.280	50mmØ TVS PEX TUBING BUILDING Y WATER SERVICE
0+100.8	97.67	95.270	200mmØ CAP AND THRUST BLOCK

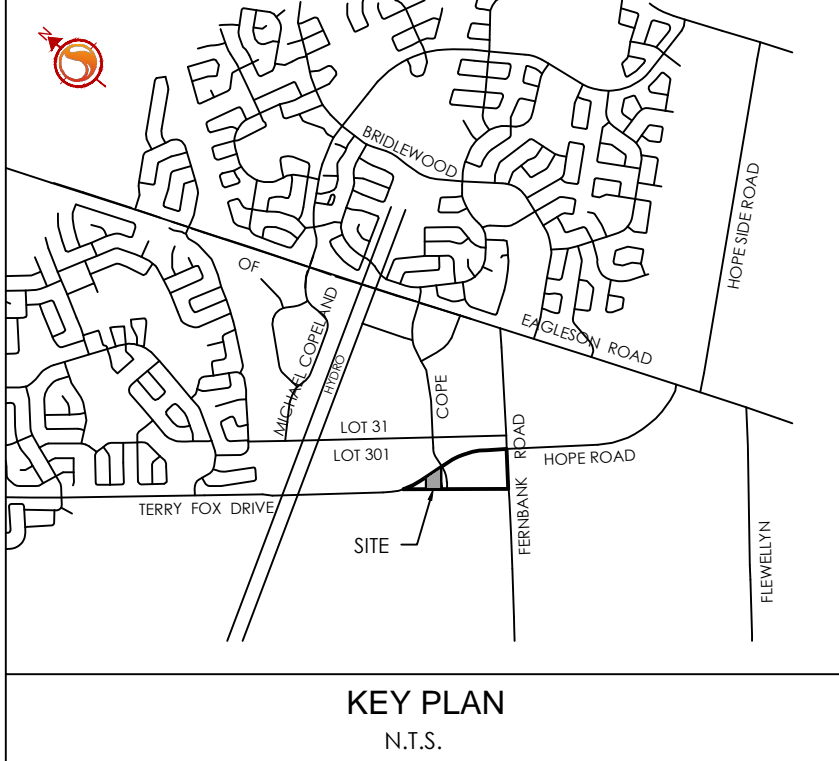
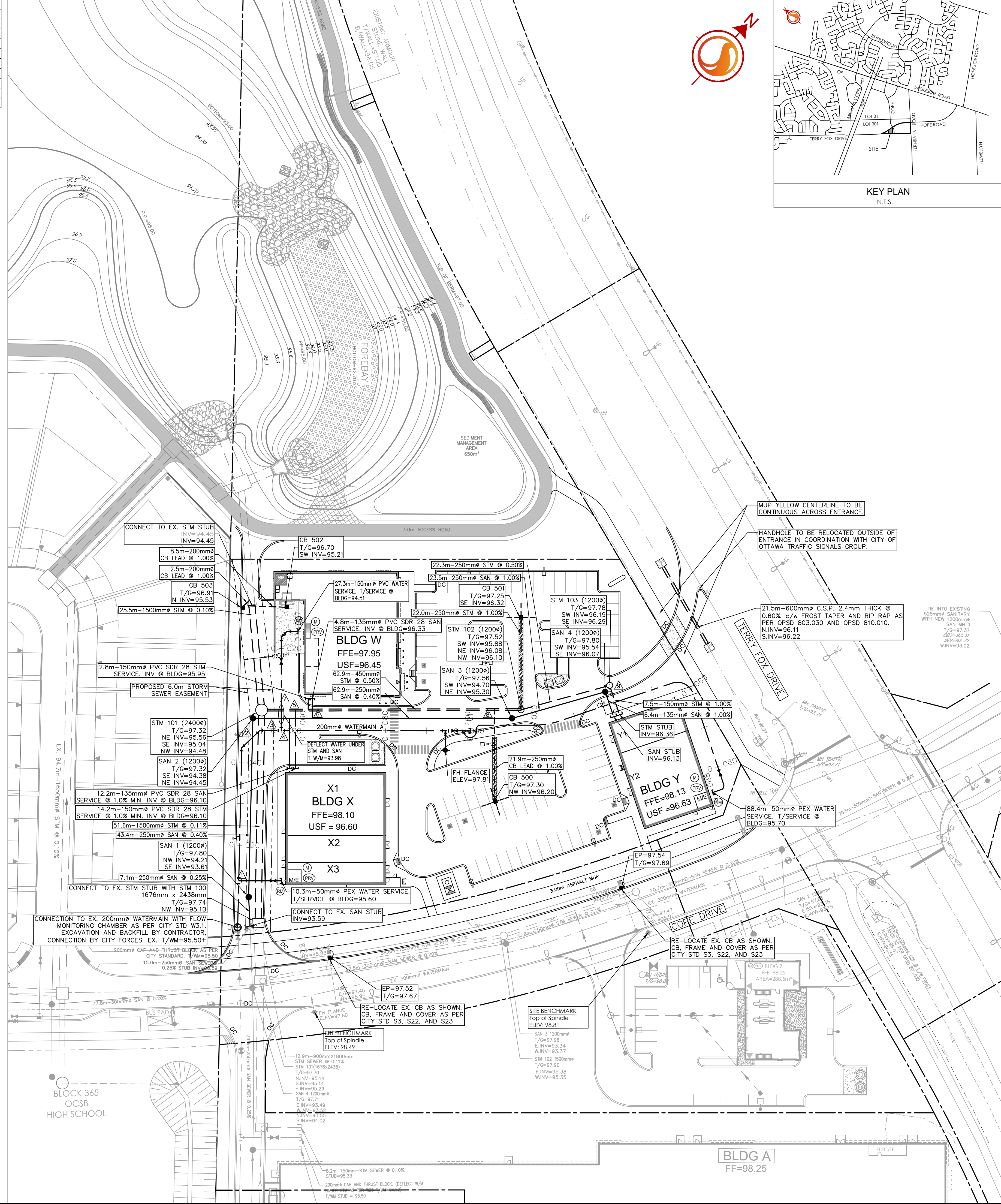
150mmØ WATER SERVICE BLDG W			
STATION	FINISHED GRADE	TOP OF W/M	ITEM
0+000	97.47	95.070	150mmØ TEE OFF 200mmØ
0+001	97.45	95.050	45mmØ VERTICAL BEND
0+002	97.42	93.980	45mmØ VERTICAL BEND
0+006.2	97.38	93.980	45mmØ VERTICAL BEND
0+007.2	97.36	94.960	45mmØ VERTICAL BEND
0+010	97.32	94.920	TOP OF PIPE
0+020	97.18	94.780	150mmØ VALVE AND VALVE BOX
0+030	96.97	94.570	45mmØ HORIZONTAL BEND
0+040	96.91	94.510	45mmØ HORIZONTAL BEND
0+054.5	96.91	94.510	150mmØ STANDPOST

50mmØ WATER SERVICE BLDG Y			
STATION	FINISHED GRADE	TOP OF W/M	ITEM
0+000	97.68	95.280	50mmØ TVS OFF 200mmØ
0+010	97.60	95.200	TOP OF PIPE
0+020	97.56	95.160	TOP OF PIPE
0+030	97.75	95.350	TOP OF PIPE
0+040	97.88	95.480	TOP OF PIPE
0+050	97.88	95.480	TOP OF PIPE
0+060	97.95	95.550	TOP OF PIPE
0+070	98.06	95.660	TOP OF PIPE
0+081.6	98.06	95.660	50mmØ STANDPOST
0+086.4	98.10	95.700	50mmØ CAP AND THRUST BLOCK

APPROVED ☒ REFUSED ☐

THIS .30_ DAY OF April, 2020

Erin O'Connell
ERIN O'CONNELL, MCIP, RPP, MANAGER (A)
DEVELOPMENT REVIEW, WEST
PLANNING, INFRASTRUCTURE AND ECONOMIC
DEVELOPMENT DEPARTMENT, CITY OF OTTAWA





Stantec

Stantec Consulting Ltd.
400 - 1331 Clyde Avenue
Ottawa ON
Tel. 613.722.4420
www.stantec.com

Copyright Reserved

The Contractor shall verify and be responsible for all dimensions. DO NOT scale the drawing - any errors or omissions shall be reported to Stantec without delay.
The Copyrights to all designs and drawings are the property of Stantec. Reproduction or use for any purpose other than that authorized by Stantec is forbidden.

Legend

	PROPOSED WATERMAIN
	PROPOSED VALVE AND VALVE BOX
	PROPOSED VALVE CHAMBER
	PROPOSED REDUCER
	PROPOSED FIRE HYDRANT
	PROPOSED WATER METER
	PROPOSED REMOTE WATER METER
	PROPOSED PRESSURE REDUCING VALVE
	PROPOSED SANITARY SEWER
	PROPOSED STORM SEWER
	PROPOSED CATCHBASIN MANHOLE
	PROPOSED CATCHBASIN
	PROPOSED CATCHBASIN c/w 3.0m-150mmØ SUBDRAINS INSTALLED AT SUBGRADE ELEVATION WITH POSITIVE DRAINAGE INTO CATCHBASIN.
	EXISTING WATERMAIN
	EXISTING VALVE AND VALVE BOX
	EXISTING VALVE CHAMBER
	EXISTING REDUCER
	EXISTING FIRE HYDRANT
	EXISTING SANITARY SEWER
	EXISTING STORM SEWER
	EXISTING CATCHBASIN
	PROPOSED DEPRESSED CURB LOCATIONS
	PROPOSED MOUNTABLE/BARRIER CURB LOCATION
	PROPOSED DOOR LOCATIONS
	PROPOSED TRANSFORMER LOCATIONS
	THERMAL INSULATION AS PER CITY STANDARD W22.0
	TYPICAL CONCRETE WHEEL STOP AS PER DETAIL ON DC / EC-1

Notes

5	ISSUED FOR TENDER	MJS	KS	20.03.24
4	REVISED PER BUILDING W CHANGES	MJS	KS	20.03.05
3	REVISED AS PER CITY COMMENTS	MJS	KS	20.02.28
2	REVISED AS PER CITY COMMENTS	MJS	KS	20.01.17
1	ISSUED TO CITY FOR SPA	MJS	KS	19.11.18
Revision		By	Appd.	YY.MM.DD

File Name:	MJS	KS	MJS	19.09.09
	Dwn.	Chkd.	Dsgn.	YY.MM.DD

Permit-Seal

Client/Project
CALLOWAY REIT (Kanata) INC.
SMARTCENTRES

COMMERCIAL DEVELOPMENT
1140 TERRY FOX DRIVE
OTTAWA, ON, CANADA

Title

SITE SERVICING PLAN

Project No. 160401317	Scale 1:500	0 5 15 25m
Drawing No.	Sheet	Revision

SSP-1

3 of 7

5

PLAN# 18064