

# WATERIDGE VILLAGE

## BLOCK 19



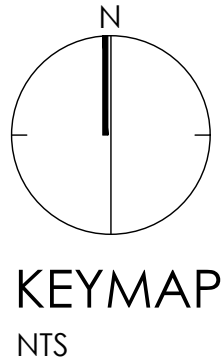
NAK PROJECT NO. 18-016

PROJECT ADDRESS:  
OTTAWA, ON

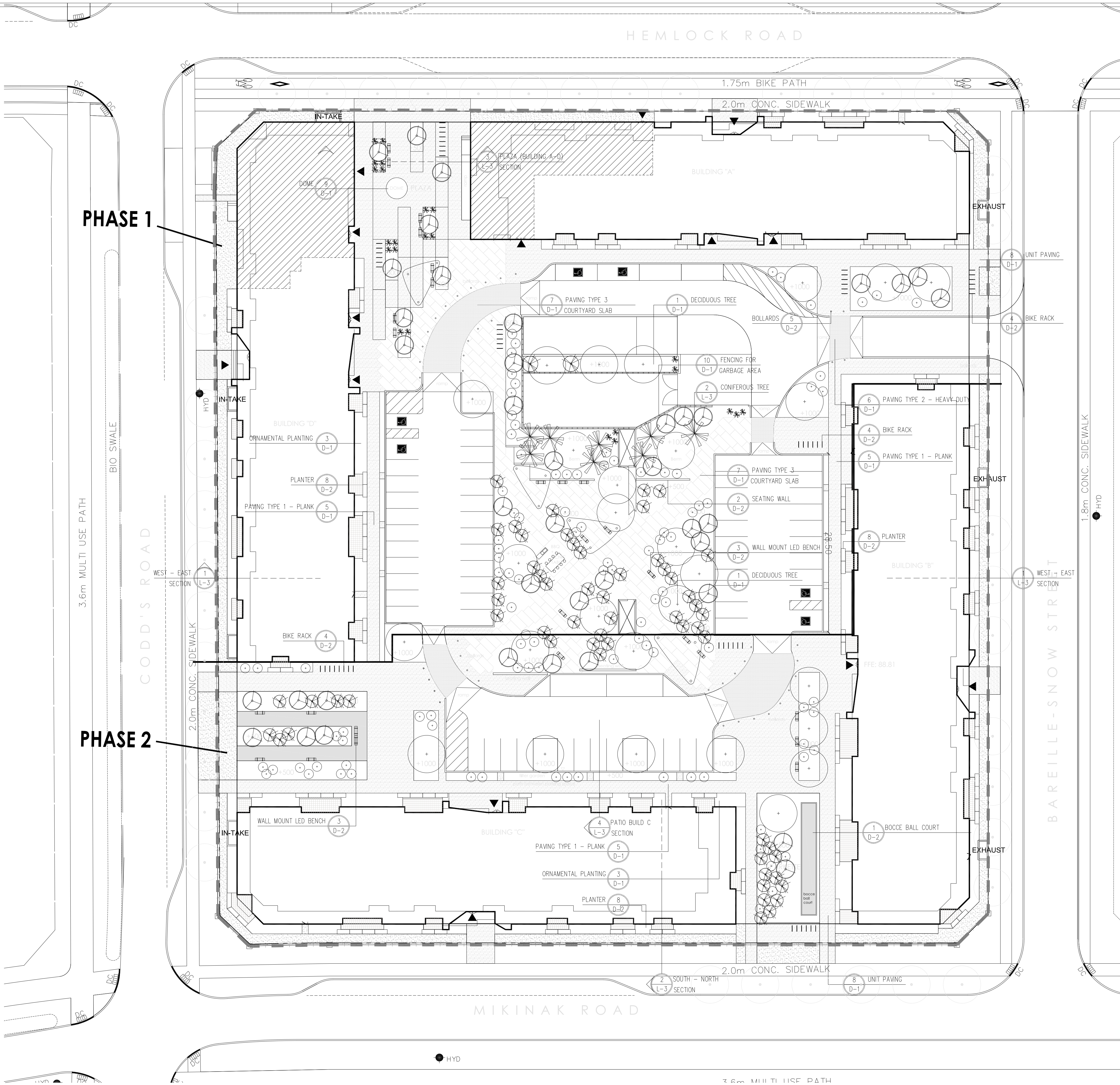
ISSUED FOR SUBMISSION 04  
MARCH 23 2020

**LIST OF DRAWINGS:**

- L-1 - LANDSCAPE PLAN
- L-2 - PLANTING PLAN
- L-3 - CROSS SECTIONS
- L-4 - PLAN VIEW DETAILS
- D-1 - DETAILS
- D-2 - DETAILS







Contractor shall check all dimensions on the work and report any discrepancy to the Landscape Architect before proceeding. All drawings and specifications are the property of the Landscape Architect and must be returned at the completion of the work. This drawing is not to be used for construction until signed by the Landscape Architect.



### LANDSCAPE

**LEGEND**

**SUBFACING**

- PAVING TYPE 1 - LARGE PLANK SIDEWALKS
- PAVING TYPE 2 - PRIVATE PATIO
- PAVING TYPE 3 - COURTYARD SAND BLAST SLABS
- PAVING - HEAVY DUTY PAVING DIMENSIONS AND DESIGN TO FOLLOW SIDEWALK
- STONE/ST PAVING

**PLANTING**

- STREET TREE (BY OTHERS)
- LARGE DECIDUOUS TREE
- SMALL DECIDUOUS TREE
- CONIFEROUS TREE
- LARGE DECIDUOUS SHRUB
- SMALL DECIDUOUS SHRUB
- ALGONQUIN NATIVE PLANTING

**AMENITIES**

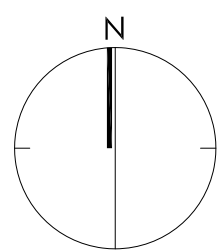
- BIKE RACK
- BACKLESS BENCH
- CUSTOM PLANTER
- PRIVATE FENCE
- SHADE STRUCTURE

**GRADING INFO**

- SOIL DEPTH FOR INTENSIVE ROOF PLANTATION (EXCLUDES DRAINAGE, MEMBRANES, PROTECTIVE LAYER ETC)

7	Issued for Submission 04	Mar.23/20
6	Issued for Client Review	Dec.10/19
5	Issued for structural coordination	Nov.19/19
4	Issued for coordination SWM	Nov. 06/19
3	Issued for Submission 02	Oct. 16/19
2	Issued for Client Review	Sep. 12/19
1	Issued for Client Review	Aug.1/19
No.	Description	Date

Revision  
City Approval Stamp



**NAK**  
design strategies

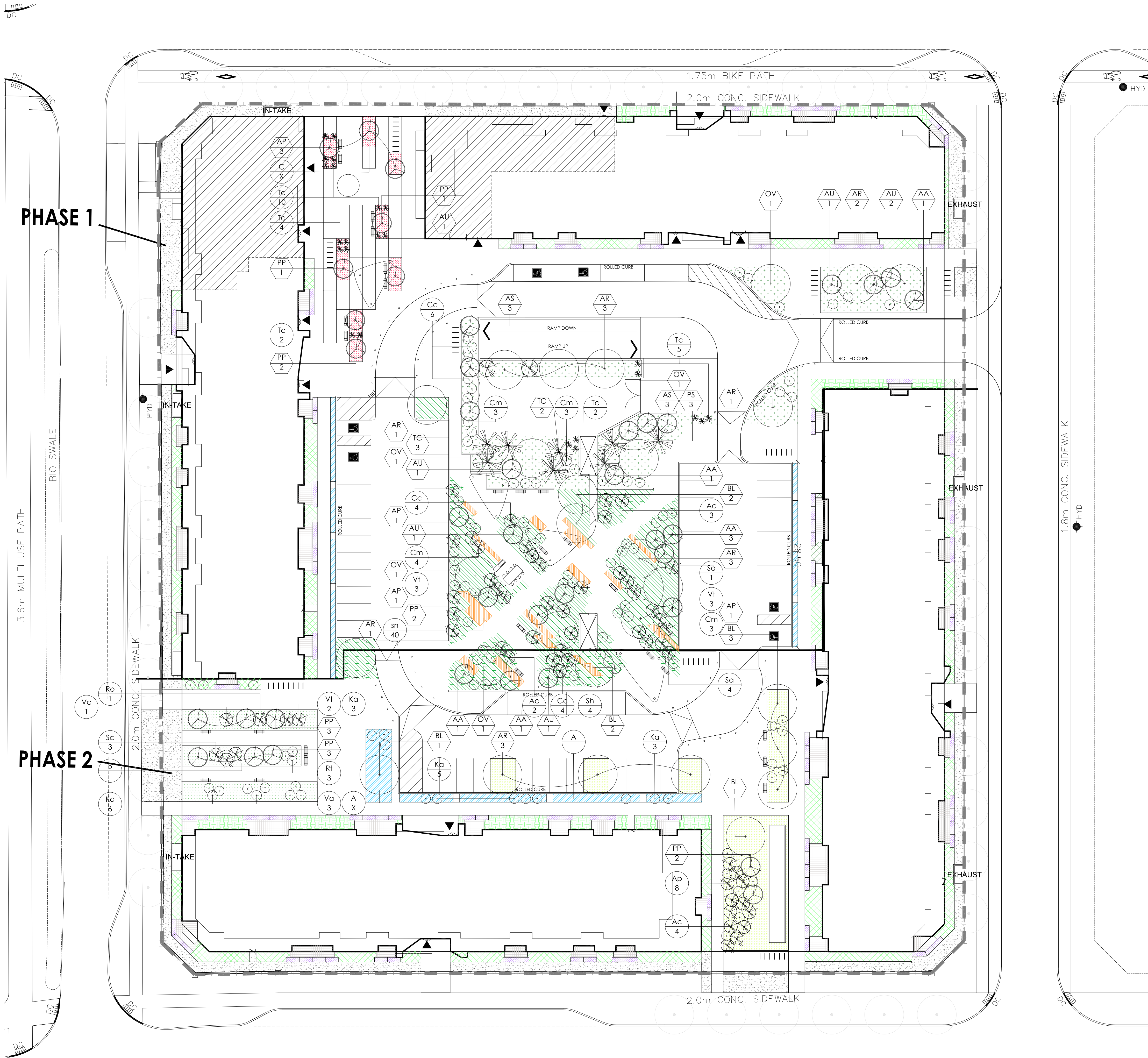
100-250 BESSERER STREET, OTTAWA, ON K1N 6B3 CANADA  
T 613.237.2345 F 613.237.6423 [NAKDESIGNSTRATEGIES.COM](http://NAKDESIGNSTRATEGIES.COM)  
Project

### WATERIDGE VILLAGE

Title LANDSCAPE SITE PLAN BLOCK 19		
Date Scale Drawn Checked Job No.	Sep 2019 1:300 TY dmc 18-016	Sheet <b>L-01</b>

ALL SITE FEATURE PENDING  
STRUCTURAL REVIEW





PLANT LIST (ALGONQUIN ETHNOBOTANICAL GARDEN)					
KEY	QTY	BOTANICAL NAME	HT(MATURE)	COMMON NAME	CAL. ROOT
LARGE DECIDUOUS TREES					
AR	5	ACER RUBRUM	15.0m	RED MAPLE	60 W.B.
BL	15	BETULA LENTA	14.0m	CHERRY BIRCH	60 W.B.
MEDIUM DECIDUOUS TREES					
OV	2	OSIRIA VIRGINIANA	12.0m	EASTERN HOP HORNBEE	60 W.B.
SMALL DECIDUOUS TREES					
AA	5	AMELANCHIER LAEVIS	5.0m	ALLEGHENY SERVICEBERRY	50 W.B.
AP	6	ACER PENSYLVANICUM	8.0m	SHAKESBARK MAPLE	MULTI STEM 15 GAL
AS	2	ACER SPICATUM	8.0m	MOUNTAIN MAPLE	MULTI STEM 15 GAL
AU	3	ALNUS RUPESTRIS	10.0m	SPECKLED ALDER	MULTI STEM 15 GAL
PP	6	PRUNUS PENSYLVANICA	10.0m	FIN CHERRY	MULTI STEM 15 GAL
LARGE DECIDUOUS SHRUBS					
AC	3	AMELANCHIER CANADENSIS	6.0m	CANADIAN SERVICEBERRY	MULTI STEM 15 GAL
Cc	8	CORYLUS CORNUTA	2.5m	BEAKED HAZEL	MULTI STEM 15 GAL
Cm	7	CRATAEGUS MONDENENSIS 'SNOWBIRD'	5.4m	SNOWBIRD HAWTHORN	3 GAL
VI	6	YBURNIUM TRILOBUM	3.0m	HIGHBUSH CRANBERRY	3 GAL
SA	5	SAMBUCUS CANADENSIS	3.0m	AMERICAN ELDERBERRY	3 GAL
SH	4	SHEPHERDIA CANADENSIS	2.5m	BUFFALO BERRY	1 GAL
MEDIUM/SMALL DECIDUOUS SHRUBS					
AO	10	ARALIA CORDATA 'SUN KING'	1.0m	JAPANESE SPREEDWART	1 GAL
AR	10	ARALIA RACEMOSA	1.5m	AMERICAN SPREEDWART	1 GAL
CU	9	CORNUS SERICEA	2.0m	RED OSIER DOGWOOD	3 GAL
VC	9	VIBURNUM CASABROOKIENSIS	1.5m	WITHERED	3 GAL
GRASSES/PERENNIALS					
205 oc	525	ANEMONE CANADENSIS	50cm	WINDFLOWER	4/m2 1 GAL
205 om	525	ANEMONE CANADENSIS	50cm	FRANZ'S EYELET	4/m2 1 GAL
205 eo	384	ERIGLOBIUM ANGUSTIFOLIUM	200cm	FIREWEED	3/m2 1 GAL
205 rd	260	EUPATORIUM PERFOLIATUM	200cm	AMERICAN SONSSET	2/m2 1 GAL
205 b	525	LOBELIA SPILLICA	200cm	GREAT BLUE LOBELIA	4/m2 1 GAL
sn	255	SORGHASTRUM NUTANS	200cm	INDIAN GRASS	4/m2 1 GAL
PLANT LIST (UPLAND AND BERM PLANT MIX)					
KEY	QTY	BOTANICAL NAME	HT(MATURE)	COMMON NAME	CAL. ROOT
MEDIUM DECIDUOUS TREES					
AR	8	ACER RUBRUM	15.0m	RED MAPLE	60 W.B.
OV	10	OSIRIA VIRGINIANA	12.0m	EASTERN HOP HORNBEE	60 W.B.
SMALL DECIDUOUS TREES					
AA	5	AMELANCHIER LAEVIS	5.0m	ALLEGHENY SERVICEBERRY	50 W.B.
AS	6	ACER SPICATUM	8.0m	MOUNTAIN MAPLE	3 GAL
AU	4	ALNUS RUPESTRIS	10.0m	SPECKLED ALDER	3 GAL
CONIFEROUS TREES					
PS	3	PRINUS STROBUS	24.0m	EASTERN WHITE PINE	W.B.
TC	5	TSUGA CANADENSIS	21.0m	CANADIAN HEMLOCK	W.B.
CONIFEROUS SHRUBS					
TC	7	TAXUS CANADENSIS	0.6m	CANADIAN YEW	2 GAL
MEDIUM/SMALL DECIDUOUS SHRUBS					
205 VA	220	VACCINIUM ANGUSTIFOLIUM	0.4m	LOWBUSH BLUEBERRY	2/m2 2 GAL
GRASSES/PERENNIALS					
105 oc	525	ANEMONE CANADENSIS	50cm	WINDFLOWER	4/m2 1 GAL
105 oc	220	CORNUS CANADENSIS	15cm	BURCHESBERRY	4/m2 1 GAL
205 eo	330	ERIGLOBIUM ANGUSTIFOLIUM	200cm	FIREWEED	3/m2 1 GAL
205 gf	220	GALLIENIA TRIFOLIATA	100cm	BOWMAN'S ROOT	2/m2 1 GAL
205 vm	330	VACCINIUM MYRTILLOIDES	15cm	VELVET LEAF BLUEBERRY	3/m2 1 GAL
PLANT LIST (RAIN GARDEN)					
KEY	QTY	BOTANICAL NAME	HT(MATURE)	COMMON NAME	CAL. ROOT
LARGE DECIDUOUS TREES					
BL	1	BETULA ALLEGHENENSIS	22.0m	YELLOW BIRCH	50 W.B.
MEDIUM/SMALL DECIDUOUS SHRUBS					
Ka	11	KALIA ANGUSTIFOLIA	1.0m	SHEEP LAUREL	2 GAL
GRASSES/PERENNIALS (MIX A)					
55 od	184	ACORUS AMERICANUS	90cm	AMERICAN SWEETFLAG	1/m2 1 GAL
605 om	184	CAREX OSGOODIANA	100cm	PALE SEDGE	2/m2 1 GAL
105 lv	15	IRIS VERSICOLOR	90cm	BLUE FLAG IRE	1/m2 1 GAL
205 b	30	SEDUM LARABOROUGHIAE	90cm	RED LARABOROUGH TEA	1/m2 1 GAL
55 dv	16	POLYPODIUM VULGARE	35cm	WALL FERN	2/m2 1 GAL
PLANT LIST (FOOD GARDEN)					
KEY	QTY	BOTANICAL NAME	HT(MATURE)	COMMON NAME	CAL. ROOT
SMALL DECIDUOUS TREES					
AC	2	AMELANCHIER CANADENSIS	6m	SERVICEBERRY	TREE FORM 15 GAL
CL	1	CRATAEGUS LAEVI GATA CRINSON CLOUD	8m	CRINSON CLOUD HAWTHORN	TREE FORM 15 GAL
PP	3	PRUNUS PENSYLVANICA	10.0m	FIN CHERRY	TREE FORM 15 GAL
LARGE DECIDUOUS SHRUBS					
Ro	3	RUBUS ODOURATUS	1.75m	FLOWERING RASPBERRY	2 GAL
Sc	3	SAMBUCUS CANADENSIS	3m	AMERICAN ELDERBERRY	2 GAL
VC	1	VIBURNUM CASABROOKIENSIS	1.5m	WITHERED	2 GAL
VI	2	YBURNIUM TRILOBUM	3m	HIGHBUSH CRANBERRY	2 GAL
MEDIUM/SMALL DECIDUOUS SHRUBS					
Ka	4	KALIA ANGUSTIFOLIA	1m	SHEEP LAUREL	2 GAL
Ri	3	RIBES RIBES	1m	RED CURRANT	2 GAL
VC	3	VACCINIUM ANGUSTIFOLIUM	0.6m	LOWBUSH BLUEBERRY	2 GAL
GRASSES/PERENNIALS (MIX B)					
105 oc	36	ASTER ERICOIDES	80cm	HEATH ASTER	2/m2 1 GAL
105 om	36	ASTER MACROPHYLLUS	100cm	LARGE-LEAVED ASTER	2/m2 1 GAL
105 oc	14	CORNUS CANADENSIS	15cm	BURCHESBERRY	4/m2 1 GAL
205 lv	148	FRAGARIA VIRGINIANA	20cm	VIRGINIA STRAWBERRY	4/m2 1 GAL
105 gf	84	GALLIENIA TRIFOLIATA	100cm	BOWMAN'S ROOT	2/m2 1 GAL
105 lv	84	SAGITTARIA LATIFOLIA	60cm	ARROWHEAD	3/m2 1 GAL
155 vm	84	VACCINIUM MYRTILLOIDES	15cm	VELVET LEAF BLUEBERRY	3/m2 1 GAL
ANNUALS					
55 na	18	NICOTIANA ALATA	100cm	FLOWERING TOBACCO	2/m2 9 CM
PLANT LIST (PLAZA GROUND COVER MIX)					
KEY	QTY	BOTANICAL NAME	HT(MATURE)	COMMON NAME	CAL. ROOT
SMALL DECIDUOUS TREES					
AP	3	ACER PENSYLVANICUM	8.0m	SHAKESBARK MAPLE	TREE FORM 15 GAL
AU	1	ALNUS RUPESTRIS	10.0m	SPECKLED ALDER	TREE FORM 15 GAL
PP	4	PRUNUS PENSYLVANICA	10.0m	FIN CHERRY	TREE FORM 15 GAL
CONIFEROUS SHRUBS					
TC	15	TAXUS CANADENSIS	0.6m	CANADIAN YEW	2 GAL
GRASSES/PERENNIALS (MIX C)					
505 om	152	GERANIUM MACULATUM	45cm	WILD GERANIUM	DENSITY 4/m2 1 GAL
505 gf	76	GALLIENIA TRIFOLIATA	100cm	BOWMAN'S ROOT	2/m2 1 GAL
PLANT LIST (PATIO PLANT MIX) (MIX D)					
KEY	QTY	BOTANICAL NAME	HT(MATURE)	COMMON NAME	DENSITY ROOT
LARGE DECIDUOUS TREES (MIX D) (SHADED AREA)					
Co	4	CORNUS ALTERNIFOLIA	400cm	PAGODA DOGWOOD	0.5/m2 2 GAL
SMALL DECIDUOUS TREES (MIX D) (SHADED AREA)					
105 Cc	22	CEANOTHUS AMERICANUS	100cm	SERVICEBERRY	1/m2 2 GAL
105 bl	15	SPARGANGLIA	15cm	MEADOWSWEET	1/m2 1 GAL
GRASSES/PERENNIALS (MIX D) (SHADED AREA)					
155 oc	88	ANEMONE CANADENSIS	50cm	WINDFLOWER	4/m2 1 GAL
155 oc	88	AGASTACHE SCROPHULARIACEAE	125cm	PURPLE GANT HYSSOP	4/m2 1 GAL
205 eo	60	CAMPANULA AMERICANA	100cm	TALL BELLEFLOWER	4/m2 1 GAL
205 eo	60	DESCHAMPSIA CESPITOSA	80cm	TUFTED HAIR GRASS	2/m2 1 GAL
FERNS (MIX D) (SHADED AREA)					
105 oc	30	CINNAMOMUM CINNAMOMEA	100cm	CINNAMON FERN	2/m2 1 GAL
SMALL DECIDUOUS SHRUBS (MIX D) (SHADED AREA)					
105 Cc	45	CEANOTHUS AMERICANUS	100cm	SERVICEBERRY	1/m2 2 GAL
105 bl	22	DIERELLA LANCEOLA	90cm	BUSH HONEY SUCKLE	1/m2 2 GAL
105 bl	45	SPARGANGLIA	15cm	MEADOWSWEET	1/m2 2 GAL
105 va	45	YBURNIUM TRILOBUM	150cm	MAPLE LEAF YBURNIUM	1/m2 2 GAL
105 vi	22	YBURNIUM TRILOBUM	200cm	HIGHBUSH CRANBERRY	1/m2 2 GAL
GRASSES/PERENNIALS (MIX D) (SHADED AREA)					
205 oc	180	DESCHAMPSIA CESPITOSA	80cm	TUFTED HAIR GRASS	2/m2 1 GAL
105 eo	135	ERIGLOBIUM ANGUSTIFOLIUM	100cm	FIREWEED	3/m2 1 GAL
105 eo	90	EUPATORIUM PERFOLIATUM	100cm	AMERICAN SONSSET	2/m2 1 GAL
105 b	180	LOBELIA SPILLICA	60cm	GREAT BLUE LOBELIA	4/m2 1 GAL
105 eo	180	PHLOX PLEICA	50cm	PRARIE PHLOX	5/m2 1 GAL
PLANT LIST (PLANTER PLANT MIX) (MIX E)					
KEY	QTY	BOTANICAL NAME	HT(MATURE)	COMMON NAME	CAL. ROOT
GRASSES/PERENNIALS (MIX D) (SHADED AREA)					
eo	130	DESCHAMPSIA CESPITOSA	80cm	TUFTED HAIR GRASS	DENSITY 2/m2 1 GAL
eo	85	ERIGLOBIUM ANGUSTIFOLIUM	100cm	FIREWEED	3/m2 1 GAL
rd	40	EUPATORIUM PERFOLIATUM	100cm	AMERICAN SONSSET	2/m2 1 GAL
b	130	LOBELIA SPILLICA	60cm	GREAT BLUE LOBELIA	4/m2 1 GAL
po	175	PHLOX PLEICA	50cm	PRARIE PHLOX	5/m2 1 GAL
PLANT LIST (NATURAL SEED MIX) (MIX F)					
KEY	QTY	BOTANICAL NAME	HT(MATURE)	COMMON NAME	CAL. ROOT
GRASSES/PERENNIALS (MIX D) (SHADED AREA)					
eo	130	DESCHAMPSIA CESPITOSA	80cm	TUFTED HAIR GRASS	DENSITY 2/m2 1 GAL
eo	85	ERIGLOBIUM ANGUSTIFOLIUM	100cm	FIREWEED	3/m2 1 GAL
rd	40	EUPATORIUM PERFOLIATUM	100cm	AMERICAN SONSSET	2/m2 1 GAL
b	130	LOBELIA SPILLICA	60cm	GREAT BLUE LOBELIA	4/m2 1 GAL
po	175	PHLOX PLEICA	50cm	PRARIE PHLOX	5/m2 1 GAL

Contractor shall check all dimensions on the work and report any discrepancy to the Landscape Architect before proceeding. All drawings and specifications are the property of the Landscape Architect and must be returned at the completion of the work. This drawing is not to be used for construction until signed by the Landscape Architect.

Location Plan

LEGEND

PROPERTY LINE

SURFACING

- ALGONQUIN ETHNOBOTANICAL GARDEN (657 m2)
- UPLAND AND BERM PLANT MIX (554 m2)
- RAIN GARDEN (153 m2)
- ALGONQUIN FOOD GARDEN (187 m2)
- PLAZA GROUND COVER MIX (77 m2)
- PATIO PLANT MIX (50N) (450 m2)
- PATIO PLANT MIX (SHADE) (150 m2)
- PLANTER PLANT MIX (200 m2)
- SEEDING
- NATURAL SEED MIX (280 m2)
- STRIPS OF INDIAN GRASS (450 m2)

PLANTING

- STREET TREE (BY OTHERS)
- LARGE/MEDIUM DECIDUOUS TREE
- MEDIUM DECIDUOUS TREE
- CONIFEROUS TREE
- LARGE DECIDUOUS SHRUB
- MEDIUM DECIDUOUS SHRUB
- CONIFEROUS SHRUB

7	Issued for Submission 04	Mar. 23/20
6	Issued for Client Review	Dec. 10/19
5	Issued for structural coordination	Nov. 19/19
4	Issued for coordination SWM	Nov. 06/19
3	Issued for Submission 02	Oct. 16/19
2	Issued for Client Review	Sep. 12/19
1	Issued for Client Review	Aug. 1/19

No. Description Date

Revision

City Approval Stamp

ASSOCIATION OF LANDSCAPE ARCHITECTS ONTARIO

MEMBER

NAK

design strategies

100-250 BESSERER STREET, OTTAWA, ON K1N 6B3 CANADA  
T 613.237.2345 F 613.237.6423 NAKDESIGNSTRATEGIES.COM

Project

WATERIDGE VILLAGE

Title

LANDSCAPE PLANTING PLAN  
BLOCK 19

Date Oct 2019 Sheet

Scale 1:300

Drawn TY

Checked dmc

Job No. 18-016

L-02

ALL SITE FEATURE PENDING  
STRUCTURAL REVIEW

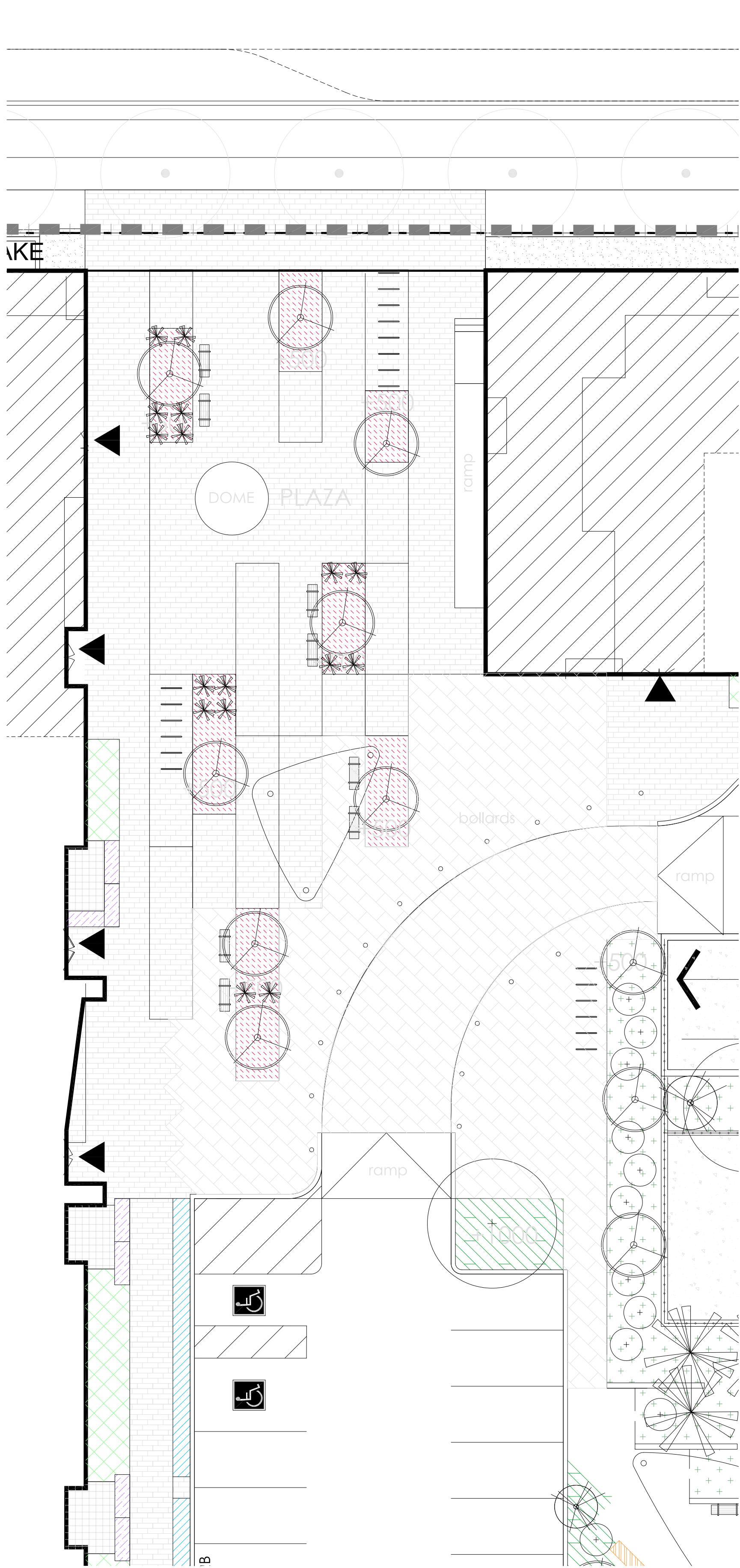




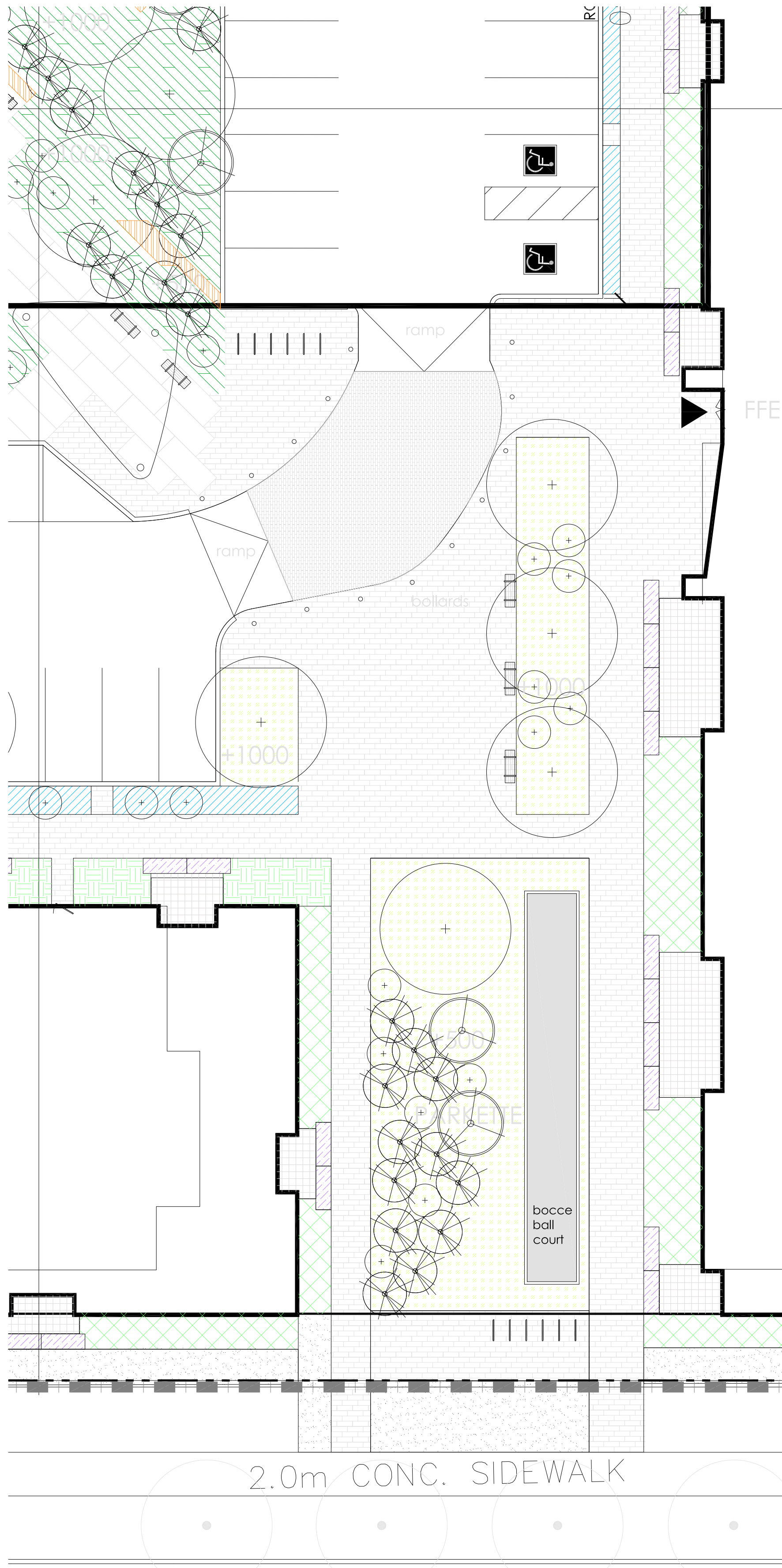
L-03

TY PROJECT NO.: D07-12-18-0086 - WATERIDGE VILLAGE - MATTAMY HOMES - NOT FOR CONSTRUCTION

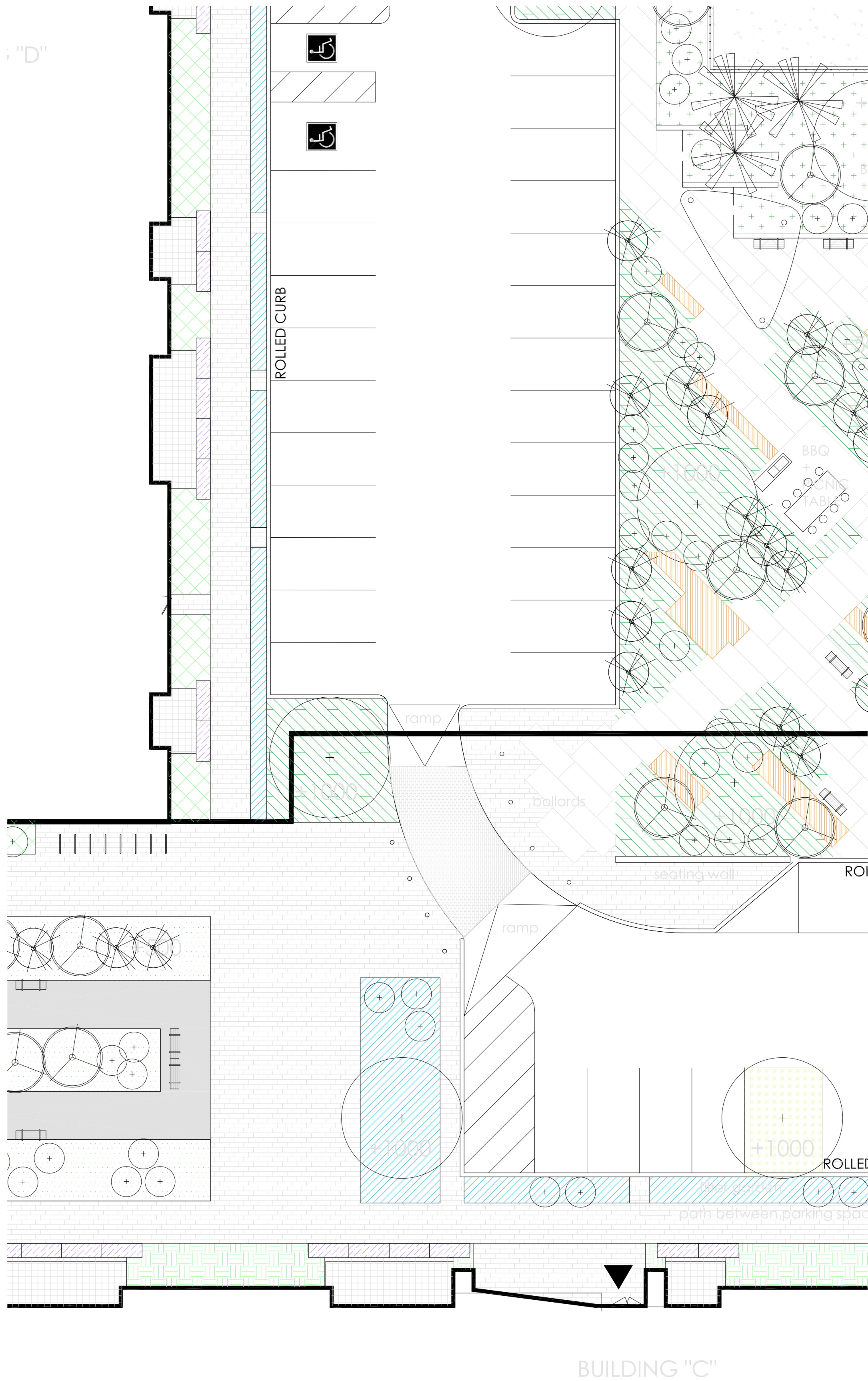




1 PLAZA PLANVIEW-NORTH WEST  
1:150



2 PLAZA PLANVIEW-SOUTH EAST  
1:150



3 PLAZA PLANVIEW(FOOD GARDEN)-SOUTH WEST  
1:150

ALL SITE FEATURE PENDING  
STRUCTURAL REVIEW

Contractor shall check all dimensions on the work and report any discrepancy to the Landscape Architect before proceeding. All drawings and specifications are the property of the Landscape Architect and must be returned at the completion of the work. This drawing is not to be used for construction until signed by the Landscape Architect.



#### PLANTING

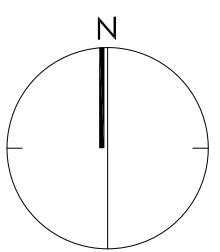
##### LEGEND

- SURFACING**
- ALGONGUIN ETHNOTRANICAL GARDEN (657 m<sup>2</sup>)
  - UPLAND AND BERRA PLANT MIX (554 m<sup>2</sup>)
  - RAIN GARDEN (153 m<sup>2</sup>)
  - ALGONGUIN FOOD GARDEN (187 m<sup>2</sup>)
  - PLAZA GROUND COVER MIX (77 m<sup>2</sup>)
  - PATIO PLANT MIX (50)(450 m<sup>2</sup>)
  - PATIO PLANT MIX (SHADE)(150 m<sup>2</sup>)
  - PLANTER PLANT MIX (200 m<sup>2</sup>)
  - SOODING
  - NATURAL SEED MIX (261 m<sup>2</sup>)
  - STRIPS OF INDIAN GRASS (65m<sup>2</sup>)

##### PLANTING

- STREET TREE (BY OTHERS)
- LARGE/MEDIUM DECIDUOUS TREE
- MEDIUM DECIDUOUS TREE
- CONIFEROUS TREE
- LARGE DECIDUOUS SHRUB
- MEDIUM DECIDUOUS SHRUB
- CONIFEROUS SHRUB

7	Issued for Submission 04	Mar. 23/20
6	Issued for Client Review	Dec. 10/19
5	Issued for structural coordination	Nov. 19/19
4	Issued for coordination SWM	Nov. 06/19
3	Issued for Submission 02	Oct. 16/19
2	Issued for Client Review	Sep. 12/19
1	Issued for Client Review	Aug. 1/19
No.	Description	Date
Revision		
City Approval Stamp		



**NAK**  
design strategies

100-250 BESSERER STREET, OTTAWA, ON K1N 6B3 CANADA  
T 613.237.2345 F 613.237.6423 [NAKDESIGNSTRATEGIES.COM](http://NAKDESIGNSTRATEGIES.COM)  
Project

WATERIDGE VILLAGE

Title

PLAN VIEWS  
BLOCK 19

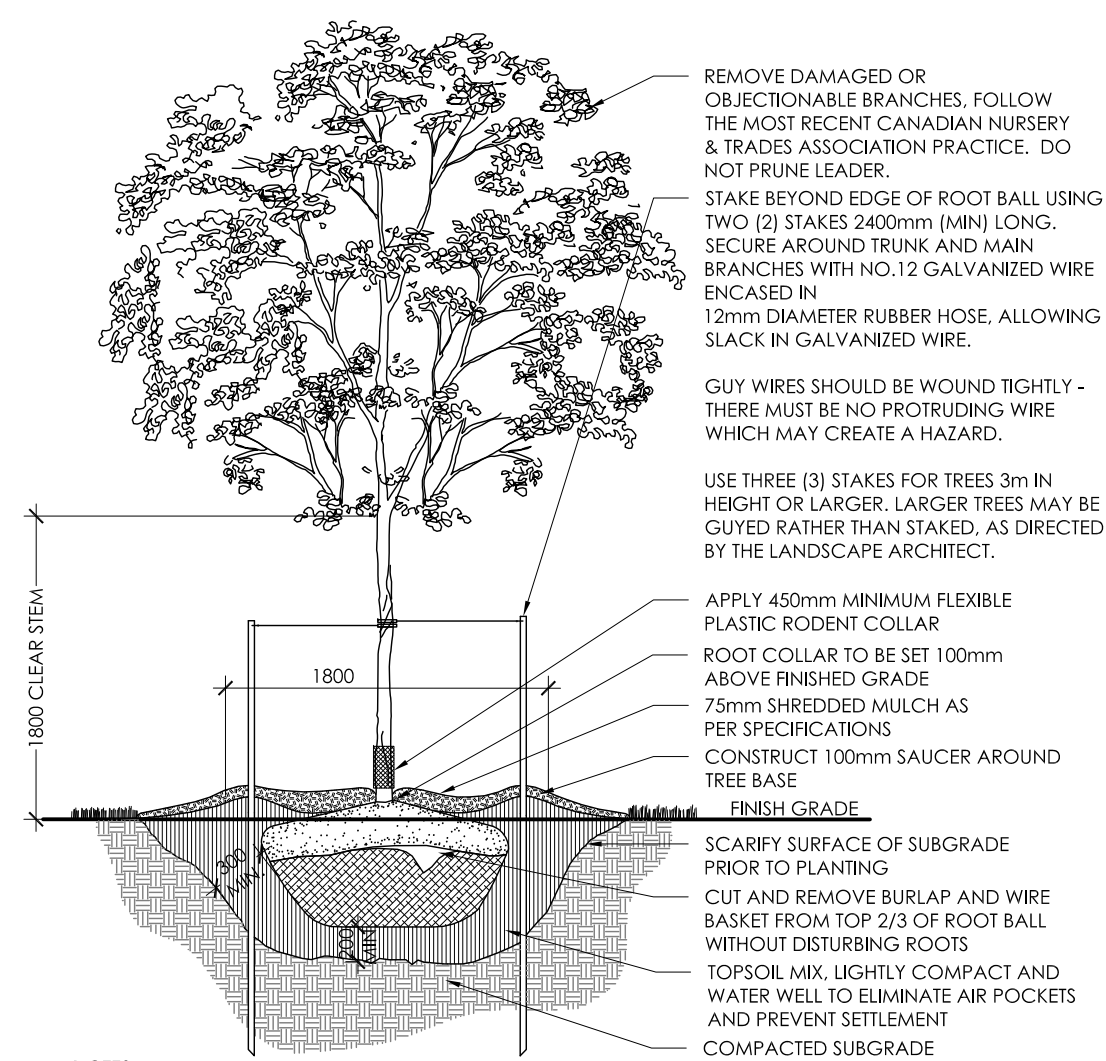
Date Sep 2019  
Scale 1:150  
Drawn TY  
Checked MC  
Job No. 18-016

Sheet

L-04

CITY PROJECT NO. D07-12-18-0084 - WATERIDGE VILLAGE - MATTAMY HOMES - NOT FOR CONSTRUCTION

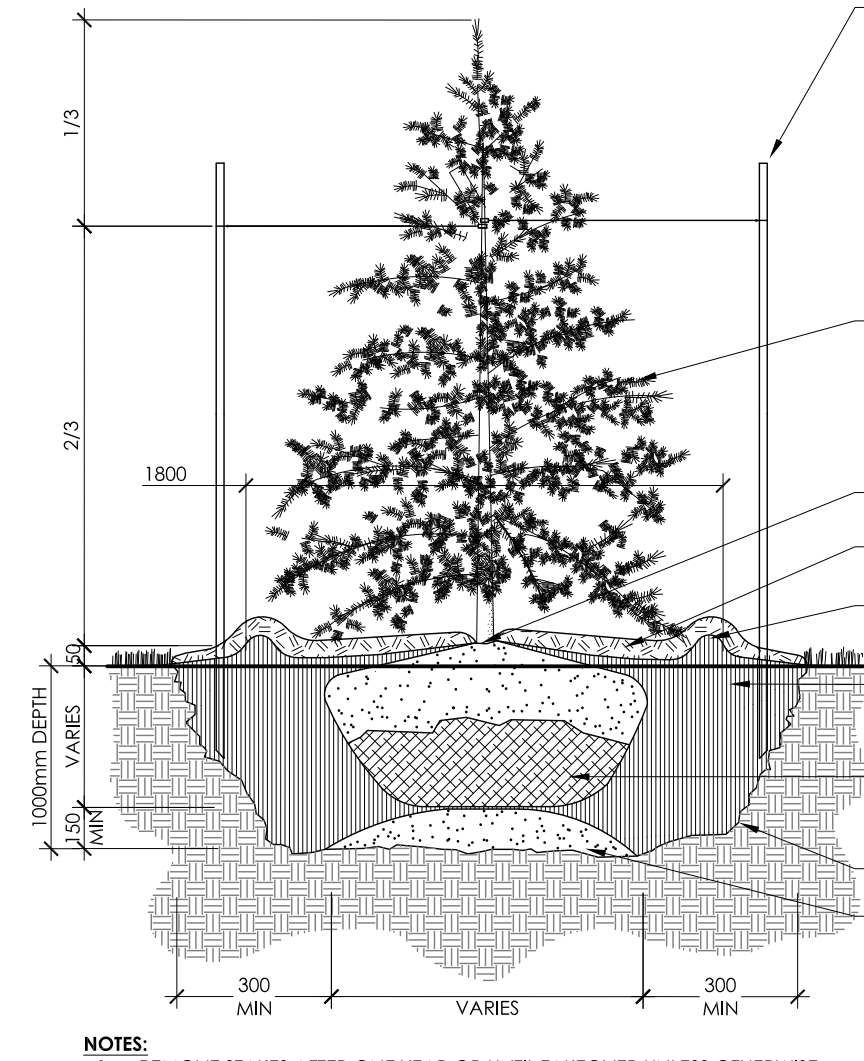




- NOTES:
1. REMOVE STAKES AND RODENT GUARD AFTER ONE YEAR OR UNTIL TAKEOVER, UNLESS OTHERWISE DIRECTED BY THE LANDSCAPE ARCHITECT.
  2. TOPSOIL MIXTURE AND SHREDDED MULCH AS PER SPECIFICATION
  3. REMOVE TREE WRAP AFTER PLANTING
  4. CALIPER TO BE MEASURED AT THE BASE OF TREE AT ROOT BALL.

## 1 DECIDUOUS TREE

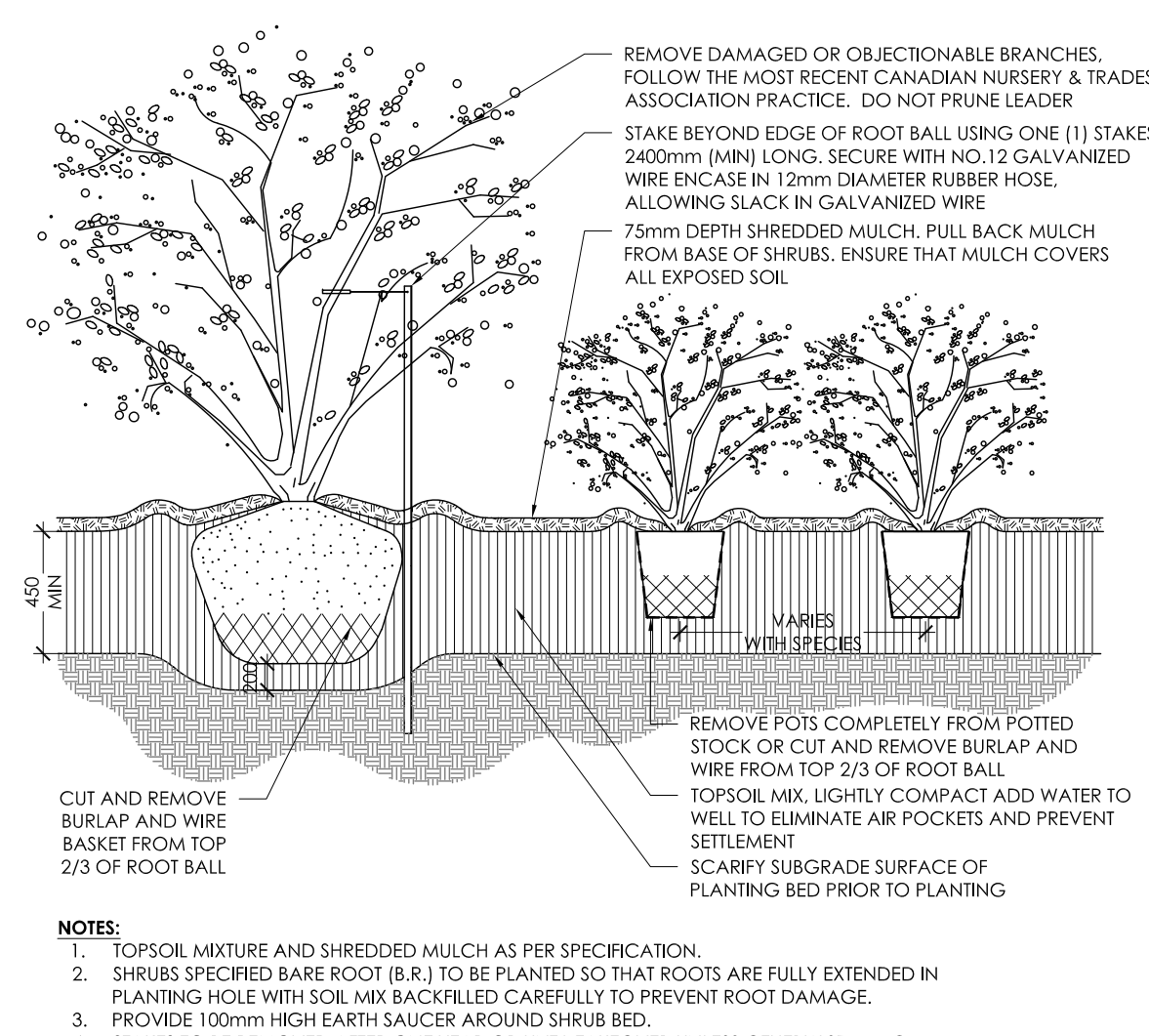
N.T.S.



- NOTES:
1. REMOVE STAKES AFTER ONE YEAR OR UNTIL TAKEOVER UNLESS OTHERWISE DIRECTED BY THE LANDSCAPE ARCHITECT.
  2. TOPSOIL MIXTURE AND SHREDDED MULCH AS PER SPECIFICATION

## 2 CONIFEROUS TREE

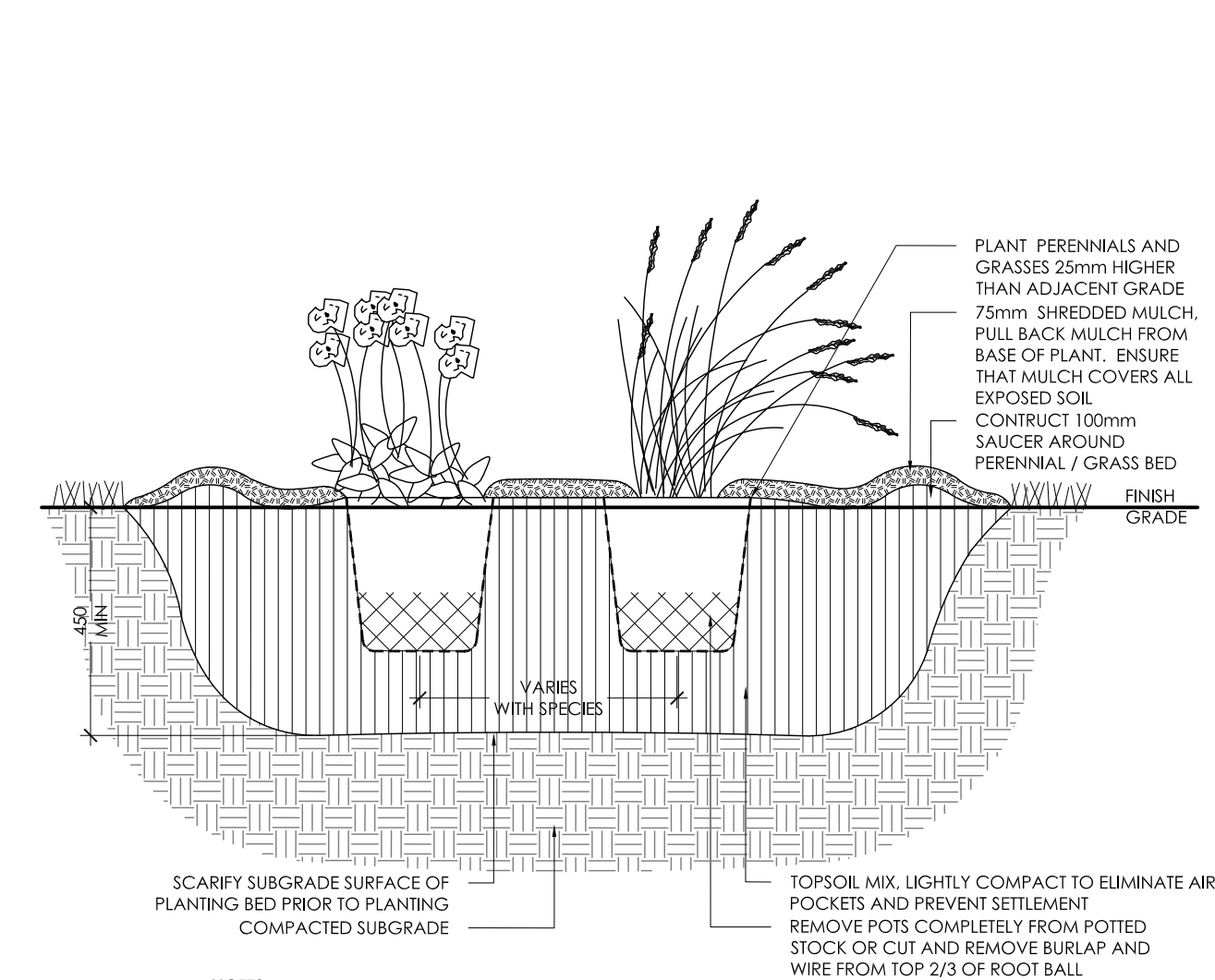
N.T.S.



- NOTES:
1. TOPSOIL MIXTURE AND SHREDDED MULCH AS PER SPECIFICATION.
  2. SHRUBS SPECIFIED BARE ROOT (B.R.) TO BE PLANTED SO THAT ROOTS ARE FULLY EXTENDED IN PLANTING HOLE WITH SOIL MIX BACKFILLED CAREFULLY TO PREVENT ROOT DAMAGE.
  3. PROVIDE 100mm HIGH EARTH SAUCER AROUND SHRUB BED.
  4. STAKES TO BE REMOVED AFTER ONE YEAR OR UNTIL TAKEOVER UNLESS OTHERWISE DIRECTED BY LANDSCAPE ARCHITECT.

## 3 ORNAMENTAL PLANTING

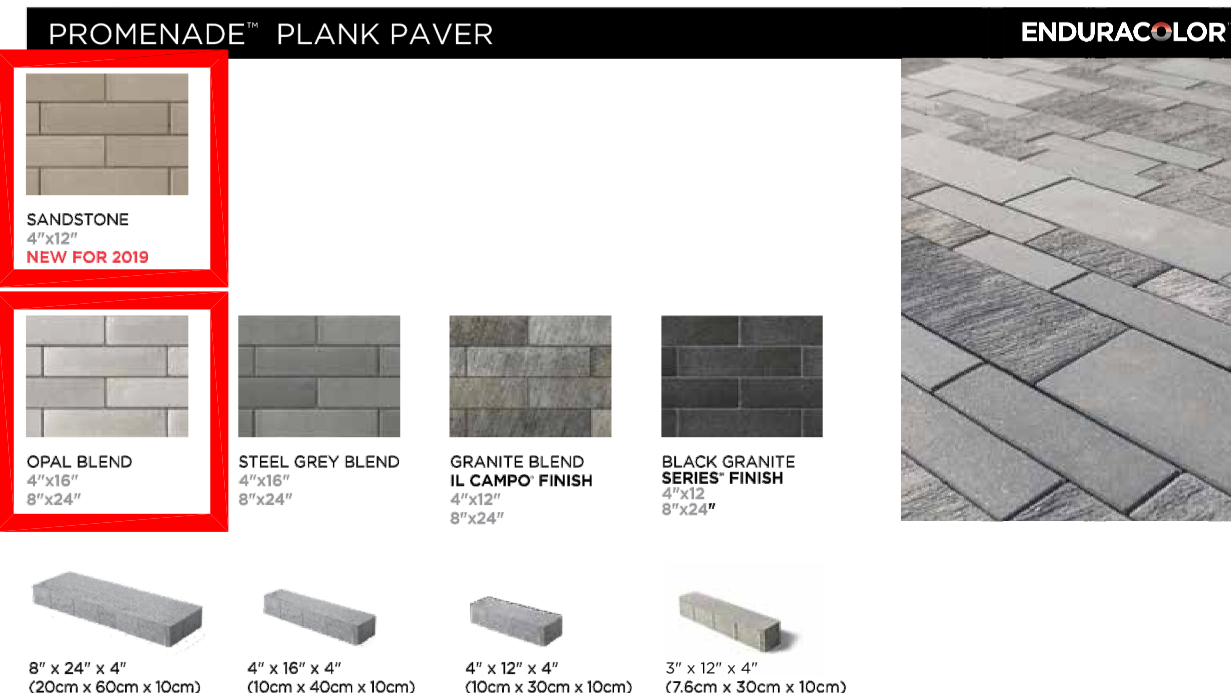
N.T.S.



- NOTES:
1. TOPSOIL MIXTURE AND SHREDDED MULCH AS PER SPECIFICATION.
  2. PROVIDE 100mm HIGH EARTH SAUCER AROUND PERENNIAL/GRASS BED.

## 4 PERENNIAL + ORNAMENTAL GRASS PLANTING

N.T.S.



Stones & Bundling	Unit	Thickness	Bundles	Sq/Ft Per Section	Per Bundle Layers	Stone	Per Bundle Sq/Ft	Solder Lb/Ft Per Bundle	Solder Lb/Ft Per Section	Units Per Bundle	Layers	Lbs Per Bundle					
Geopavers / Paving Manufacturers																	
8" x 24"	4" (10cm)	51.67	10.33	1.29	5	-	1.97	26.2	0.66	-	78.70	0.77	-	40	478	-	2,391
4" x 16"	4" (10cm)	51.67	10.33	0.43	5	-	1.31	39.4	0.33	-	157.50	2.32	-	120	488	-	2,440
4" x 12"	4" (10cm)	58.15	11.63	0.32	5	-	0.98	60.1	0.33	-	177.20	3.10	-	160	632	-	2,660
Edg-Paverwide	4" (10cm)	53.28	10.66	0.24	5	-	0.92	57.7	0.25	-	216.50	4.13	-	220	488	-	2,439

Notes: Sold in full bundles only on a refundable skid. Important: A urethane rubber paver mat must be used to prevent scuffing. Read the Polymeric Sand advisory on page 52. Contact your Unilock Territory Manager for further information. All measurements are nominal.

UNILOCK 15

## IL CAMPO®

Created with technology that is exclusive to Unilock, the etched lines on the surface of Il Campo make it a richly detailed, striking choice for virtually any application. Available in a random bundle or individual units in select sizes. It's possible to use Il Campo to create both random and geometric patterns. Il Campo has been a popular choice amongst landscape architects in commercial projects for years due to its unique appearance and slip resistance. It's also a popular choice for banding and accents in paver designs, walls and other vertical.



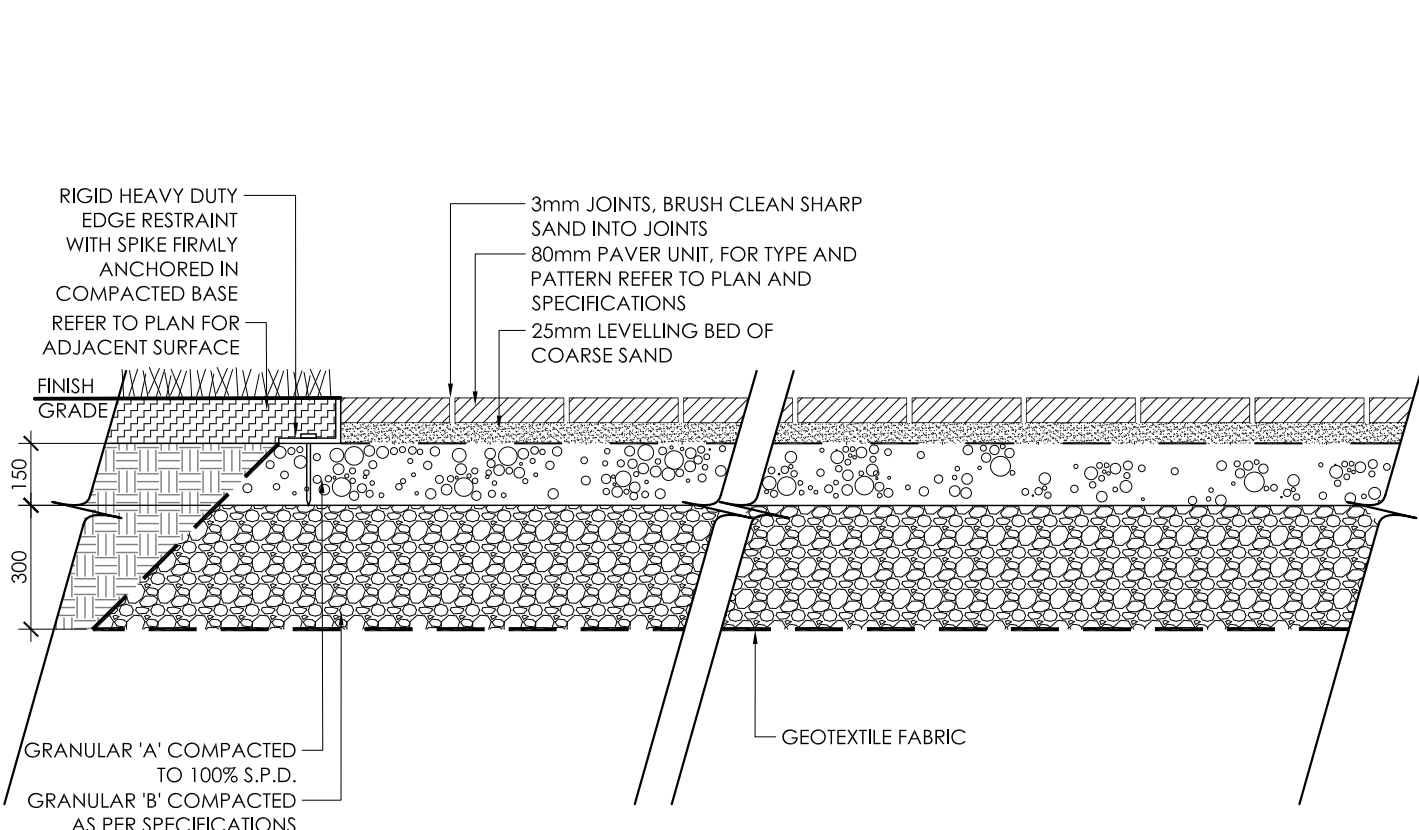
ADDITIONAL COLORS AND SIZES: 12 x 12", 4 x 12", 6 x 8" and Random Bundle are available in additional colors while quantities last.

	Unit	SqFt Per	Per Bundle	Solder LbFt Per	Saltbr LbFt Per	Units Per	Lbs Per						
Stones & Bundling	Thickness	Bundle	Layer	Stone	Layers	SqFt	Bundle	SqFt	Bundle	Layers	Bundling		
4 x 8	2-3/4" (7cm)	94.6	11.82	0.22	8	0.667	141.8	0.334	263.6	4.57	432	377	3021
8 x 16	2-3/4" (7cm)	82.67	10.33	0.66	8	1.31	63	0.66	126	1.16	96	343	2746
8 x 24	4" (10cm)	51.67	10.33	1.29	5	1.97	26.2	0.66	78.7	-	40	478	2391
4 x 12	4" (10cm)	58.13	11.63	0.32	5	0.98	59.1	0.33	177.2	3.1	180	532	2659

Dark Charcoal is only available in 6" x 8" and 4" x 8" (where stocked).  
Il Campo is sold in full bundles only. Can be mechanically installed. All measurements are nominal. Important: Sold on a refundable skid. Textured surfaces require a buffer between the plate compactor and the paver surface to prevent scuffing. Polymeric Sand is not recommended for use with this product.

## 5 PAVING TYPE 1 - PLANK

N.T.S.



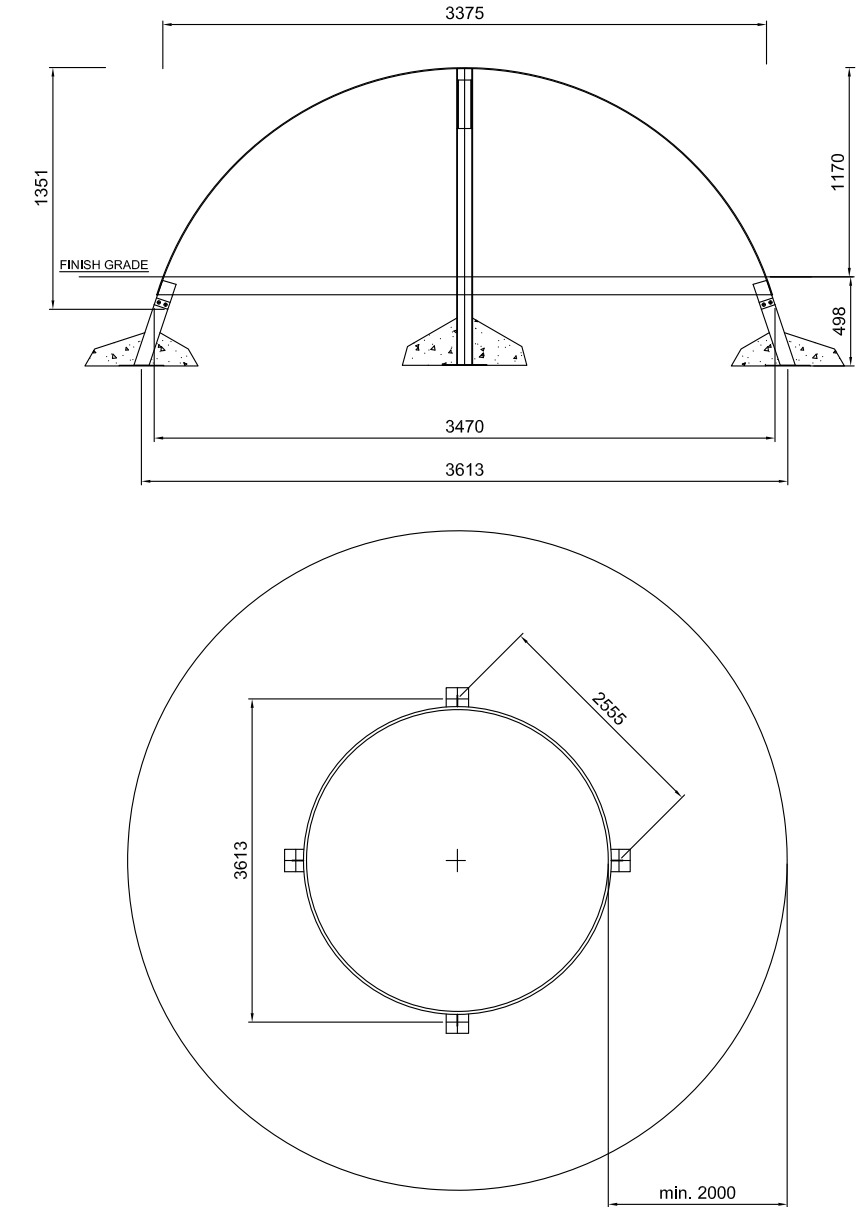
- NOTES:
1. FOR PAVING TYPE REFER TO SPECIFICATIONS. PAVERS SHALL BE INSTALLED IN STRICT ACCORDANCE WITH THE MANUFACTURER'S RECOMMENDATIONS WITH TIGHT BUT JOINTS OF APPROXIMATELY 3mm. ON A SAND BASE. SAW CUT PAVERS AS REQUIRED. USE AN APPROVED VIBRATORY COMPACTOR IN A CIRCULAR PATTERN.
  2. ALL DAMAGED OR CHIPPED PAVERS MUST BE REPLACED AT THE CONTRACTOR'S COST.
  3. EXCAVATE AND REMOVE ALL TOPSOIL AND UNSTABLE MATERIALS OFF SITE. SUBGRADE TO BE GRADED TO SIMILAR CONTOURS AS FINISH GRADE. COMPACT SUBGRADE TO 95% S.P.D. PLACE 150mm LAYER OF GRANULAR 'A' COMPACTED TO 100% S.P.D.
  4. PLACE MAXIMUM 25mm UNCOMPACTED SAND FOR LEVELLING COURSE.
  5. INSTALL PAVING UNITS IN THE PATTERN AS SPECIFIED PER MANUFACTURER'S PATTERN RECOMMENDATION AND SPECIFICATIONS.
  6. RETAIN EDGING WITH RIGID PAVE EDGE RESTRAINTS AS PER SPECIFICATIONS.

## 8 UNIT PAVING

N.T.S.

## 6 PAVING TYPE 2

N.T.S.



## 9 DOME - PLAY STRUCTURE

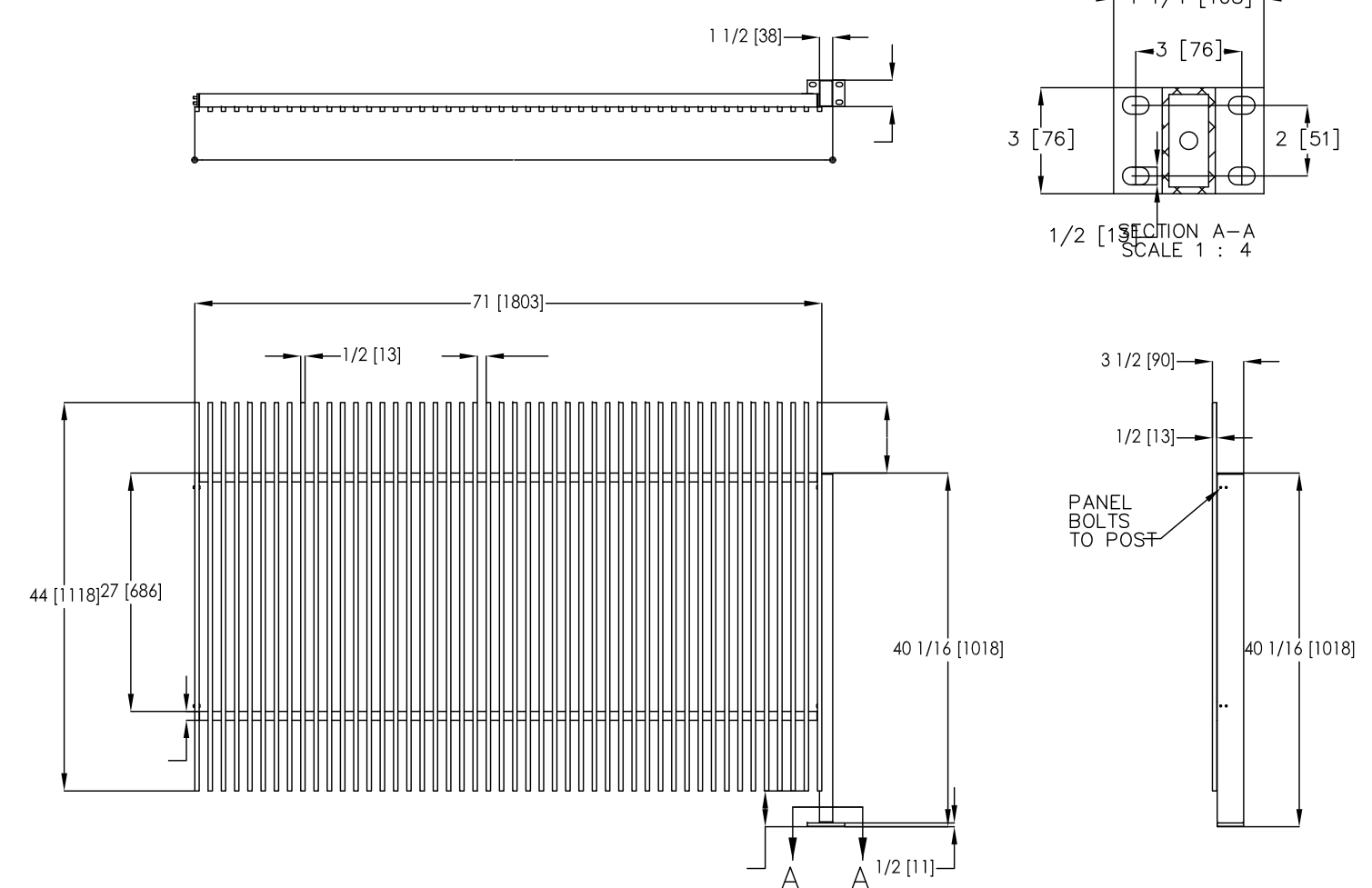
N.T.S.



SCALE	NUMBER	REV	A2
DOMESTIC	DOMESTIC	DOMESTIC	DOMESTIC
DOMESTIC	DOMESTIC	DOMESTIC	DOMESTIC
DOMESTIC	DOMESTIC	DOMESTIC	DOMESTIC

## 10 FENCING FOR GARBAGE WASTE ENCLOSURE

N.T.S.



landscapiforms Drawing: BX0402 Dimensions are in inches [mm]

CONFIDENTIAL DRAWING INFORMATION CONTAINED HEREIN IS THE PROPERTY OF LANDSCAPE FORMS. INTENDED USE IS LIMITED TO DESIGN PROFESSIONALS SPECIFYING LANDSCAPE FORMS PRODUCTS AND THEIR DIRECT CLIENTS. DRAWING IS NOT TO BE COPIED OR DISCLOSED TO OTHERS WITHOUT THE CONSENT OF LANDSCAPE FORMS. ALL RIGHTS RESERVED.

ALL DETAILS PENDING STRUCTURAL REVIEW

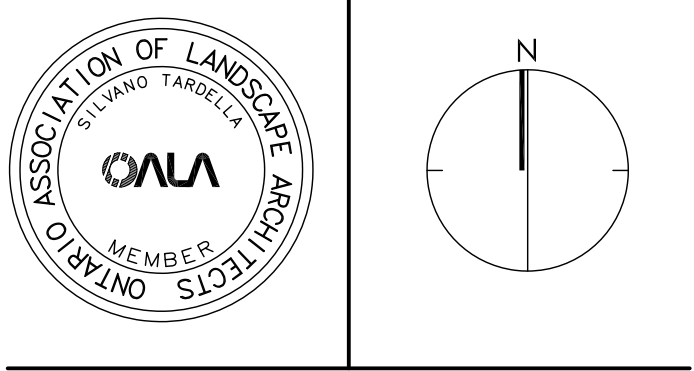
Contractor shall check all dimensions on the work and report any discrepancy to the Landscape Architect before proceeding. All drawings and specifications are the property of the Landscape Architect and must be returned at the completion of the work. This drawing is not to be used for construction until signed by the Landscape Architect.



No.	Description	Date
8	Issued for Submission 04	Mar. 23/20
7	Re-design for CLIENT REVIEW	Mar. 20/20
6	Issued for Client Review	Dec. 10/19
5	Issued for structural coordination	Nov. 19/19
4	Issued for coordination SWM	Nov. 06/19
3	Issued for Submission 02	Oct. 16/19
2	Issued for Client Review	Sep. 12/19
1	Issued for Client Review	Aug. 1/19
No.	Description	Date

Revision

City Approval Stamp



NAK design strategies

100-250 BESSERER STREET, OTTAWA, ON K1N 6B3 CANADA  
T 613.237.2345 F 613.237.6423 NAKDESIGNSTRATEGIES.COM

Project

## WATERIDGE VILLAGE

Title	DETAILS BLOCK 19
Date	Oct 2019
Scale	N.T.S.
Drawn	TM, TY
Checked	MC
Job No.	18-016
Sheet	D-01



