

## City of Ottawa 2017 TIA Guidelines Screening Form

### 1. Description of Proposed Development

Municipal Address	<b>2555 Sheffield</b>
Description of Location	<b>East of Sheffield/Bantree</b>
Land Use Classification	<b>warehouse</b>
Development Size (units)	
Development Size (m <sup>2</sup> )	<b>5,755 sq.m. replacing 4,000 sq.m.</b>
Number of Accesses and Locations	<b>1 access 20m south of Bantree, 1 access 50m south of Bantree, 1 access 60m north of Bantree</b>
Phase of Development	
Buildout Year	

If available, please attach a sketch of the development or site plan to this form.

### 2. Trip Generation Trigger

Considering the Development's Land Use type and Size (as filled out in the previous section), please refer to the Trip Generation Trigger checks below.

Land Use Type	Minimum Development Size
Single-family homes	40 units
Townhomes or apartments	90 units
Office	3,500 m <sup>2</sup>
<b>Industrial</b>	<b>5,000 m<sup>2</sup></b>
Fast-food restaurant or coffee shop	100 m <sup>2</sup>
Destination retail	1,000 m <sup>2</sup>
Gas station or convenience market	75 m <sup>2</sup>

*\* If the development has a land use type other than what is presented in the table above, estimates of person-trip generation may be made based on average trip generation characteristics represented in the current edition of the Institute of Transportation Engineers (ITE) Trip Generation Manual.*

**If the proposed development size is greater than the sizes identified above, the Trip Generation Trigger is satisfied.**

### 3. Location Triggers

	Yes	No
Does the development propose a new driveway to a boundary street that is designated as part of the City's Transit Priority, Rapid Transit or Spine Bicycle Networks?		✓
Is the development in a Design Priority Area (DPA) or Transit-oriented Development (TOD) zone?*		✓

*\*DPA and TOD are identified in the City of Ottawa Official Plan (DPA in Section 2.5.1 and Schedules A and B; TOD in Annex 6). See Chapter 4 for a list of City of Ottawa Planning and Engineering documents that support the completion of TIA).*

**If any of the above questions were answered with 'Yes,' the Location Trigger is satisfied.**

### 4. Safety Triggers

	Yes	No
Are posted speed limits on a boundary street are 80 km/hr or greater?		✓
Are there any horizontal/vertical curvatures on a boundary street limits sight lines at a proposed driveway?		✓
Is the proposed driveway within the area of influence of an adjacent traffic signal or roundabout (i.e. within 300 m of intersection in rural conditions, or within 150 m of intersection in urban/ suburban conditions)?		✓
Is the proposed driveway within auxiliary lanes of an intersection?		✓
Does the proposed driveway make use of an existing median break that serves an existing site?		✓
Is there is a documented history of traffic operations or safety concerns on the boundary streets within 500 m of the development?		✓
Does the development include a drive-thru facility?	✓	

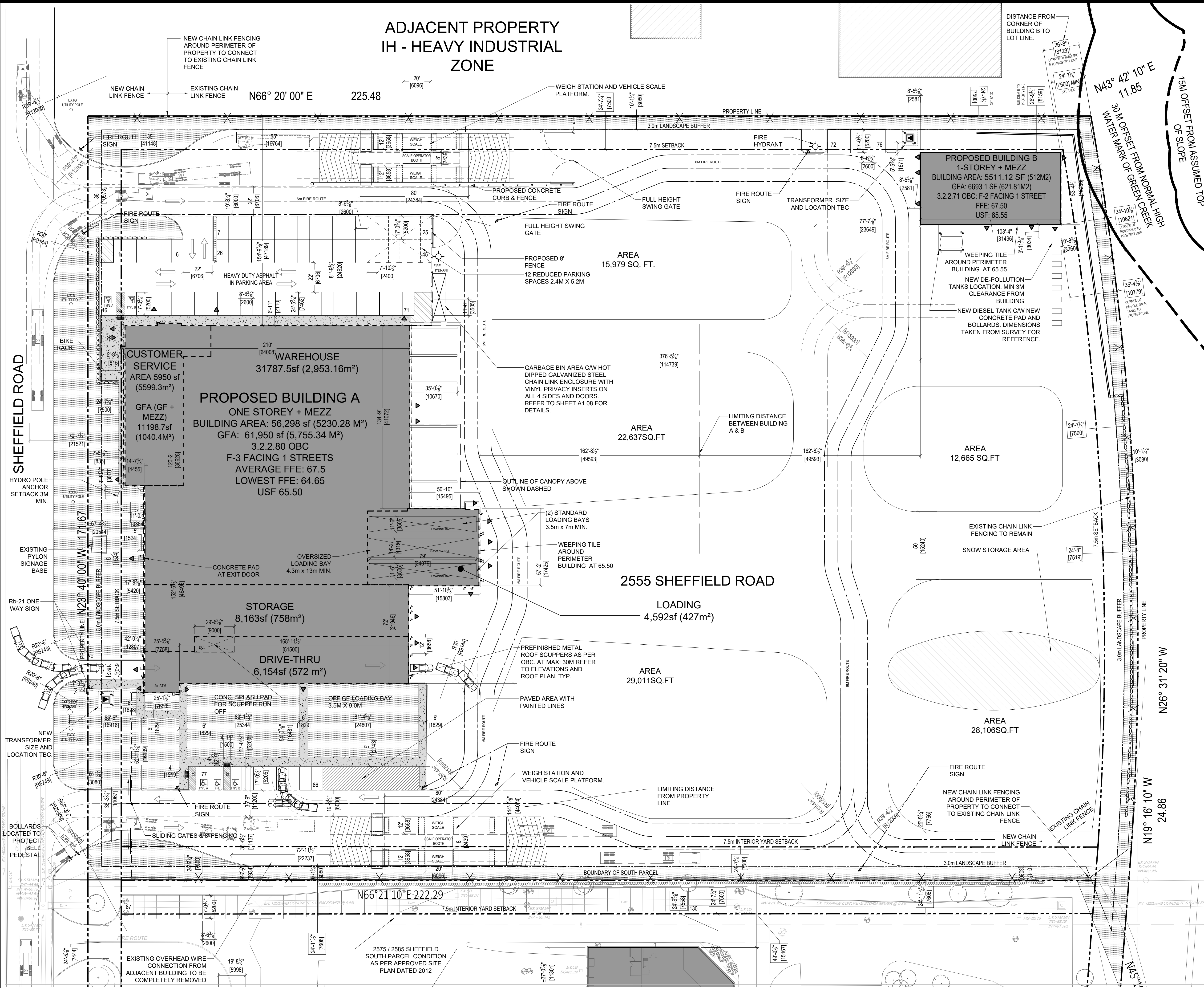
**If any of the above questions were answered with 'Yes,' the Safety Trigger is satisfied.**

### 5. Summary

	Yes	No
Does the development satisfy the Trip Generation Trigger?		✓
Does the development satisfy the Location Trigger?		✓
Does the development satisfy the Safety Trigger?	✓	

**If none of the triggers are satisfied, the TIA Study is complete. If one or more of the triggers is satisfied, the TIA Study must continue into the next stage (Screening and Scoping).**





**LEGEND**

- PROPOSED BUILDING LOCATION
- EXISTING NEIGHBORING BUILDINGS
- LANDSCAPED AREA
- NEW CONCRETE/ SIDEWALK
- BARRIER FREE PARKING CLEARANCE
- CURB
- DEPRESSED CURB
- NEW TREE/ VEGETATION (REFER TO LANDSCAPE PLAN FOR TYPE, SIZE AND LOCATION)
- EXISTING TREE (VEGETATION IS FOR REFERENCE ONLY. REFER TO LANDSCAPE PLAN)
- BARRIER FREE PARKING
- INTERIOR PARKING
- CATCH BASIN
- SEWER CONNECTION
- ENTRANCE/ EXIT LOCATION
- FENCE & GATE
- MAN HOLE COVER
- UTILITY POLE
- FIRE HYDRANT
- NLS (NEW LIGHT STANDARD, REFER TO ELECTRICAL)
- BOLLARD
- NEW CHAIN-LINK FENCE
- DIMENSION HIGHLIGHTED WITH SQUARE FRAME INDICATES SETBACK DIMENSION
- BARRIER FREE PARKING SPACES AND TRANSFER SPACE. REFER TO SITE DETAILS ON A1.08
- BARRIER FREE DEPRESSED CURB WITH TACTILE SURFACE

LEGAL DESCRIPTION OF PROPERTY:  
BLOCK 1  
REGISTERED PLAN 4M-1303  
CITY OF OTTAWA  
SURVEYED BY: ANNIS, O'SULLIVAN, VOLLEBEKK LTD.  
ONTARIO LAND SURVEYORS

1. Contractor must verify all job dimensions, all drawings, details, specifications and report any discrepancies to owners before proceeding with work.  
2. All drawings and specifications are instruments of service and the property of the architects which must be returned at the completion of the work, and may not be reproduced without their written permission.

ref	description	date
02	ISSUED FOR SPC RESPONSE 2	2020-03-13
01	ISSUED FOR SPC RESPONSE 1	2020-01-17

**revisions**

**ONTARIO ASSOCIATION OF ARCHITECTS**  
NICHOLAS CARAGIANIS  
LICENCE 5057

**DESIGN ARCHITECT** NICHOLAS CARAGIANIS ARCHITECT INC.  
137 Pamela St. Ottawa, ON. K1S 3K9  
tel: (613) 237-6801 fax: (613) 237-8289  
email: shickey@ncarchitect.ca

**STRUCTURAL ENGINEER** LEEKOR  
359 Kent, Suite 501, Ottawa, ON. K2P 0R6  
tel: (613) 234-0886 fax: (613) 233-4413  
email: lee@leekor.com

**MECHANICAL/ELECTRICAL** MIRITON  
1716 Woodward Drive, Suite 200, Ottawa, ON. K2C 0P8  
tel: (613) 722-5486  
email: johnnie.chahwan@minton.com

**CIVIL ENGINEER** NOVATECH  
240 Michael Cowpland Drive, Suite 200, Ottawa, ON. K2M 1PG  
tel: (613) 254-9643 fax: (613) 254-5867  
email: f.thauvette@novatech-eng.com

**PLANNING & URBAN DESIGN** NOVATECH  
240 Michael Cowpland Drive, Suite 200, Ottawa, ON. K2M 1PG  
tel: (613) 254-9643 fax: (613) 254-5867  
email: t.glichrist@novatech-eng.com

**OWNER:** AMERICAN IRON & METAL  
9100, BOUL. HENRI-BOURASSA EST  
MONTREAL, QUEBEC H1E 2S4  
tel: 514-494-2000 aim-global.com

**TRUE NORTH**

**PROJECT NORTH**

**ARCHITECT** **nicholas caragianis architect inc.**  
137 Pamela Street, Ottawa, ON. K1S 3K9  
t: 613 237 6801  
f: 613 937 8989  
e: info@ncarchitect.ca  
www.ncarchitect.ca

**PROJECT & LOCATION** METAL RECYCLING PLANT  
2555 SHEFFIELD ROAD  
OTTAWA, ONT.

**OFFICE FILE NUMBER** 19023

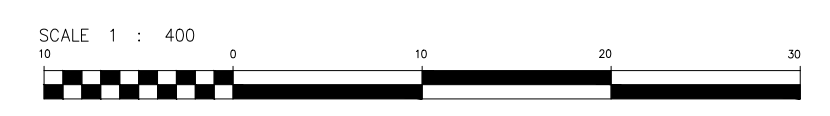
**TITLE OF DRAWING** NORTH PARCEL PROPOSED SITE PLAN

**SCALE:** 1:400

**DATE:** MARCH 2019

**DRAWN BY:** GL, SH, CC, AA

**A1.06**



BOUNDARY INFORMATION FOR NORTH PARCEL FROM SURVEY BY:  
ANNIS, O'SULLIVAN, VOLLEBEKK LTD.  
ONTARIO LAND SURVEYORS  
COMPLETED ON APRIL 04, 2019 REFER TO SHEET A1.04