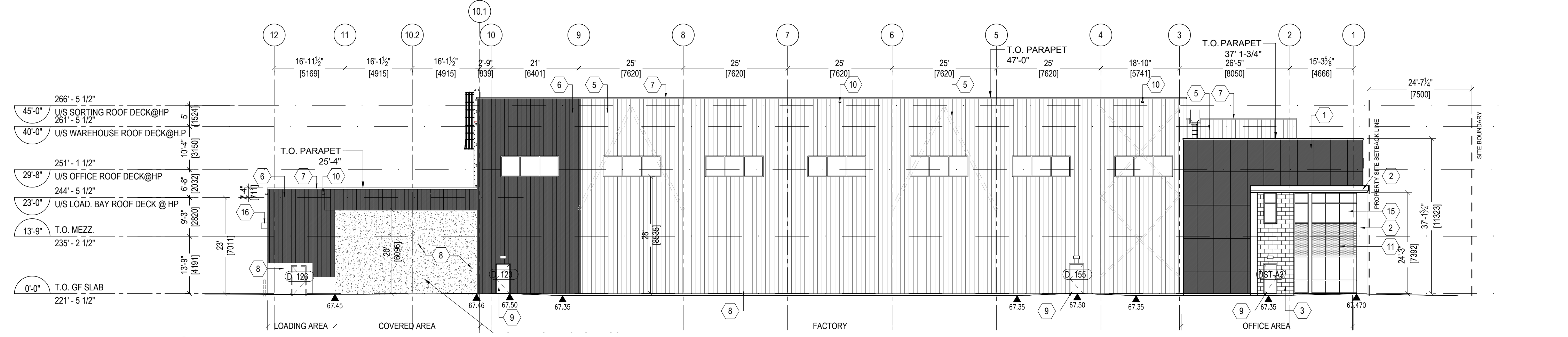
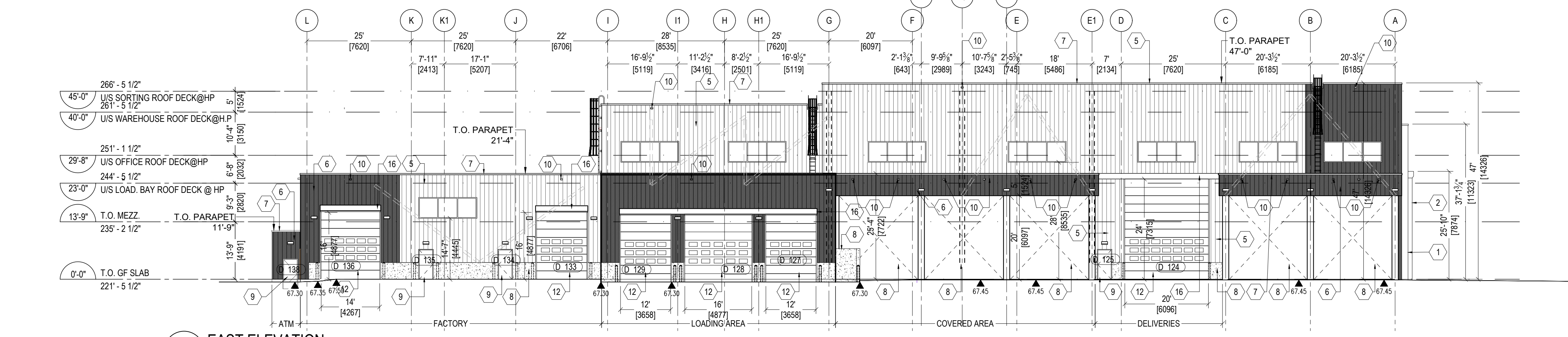


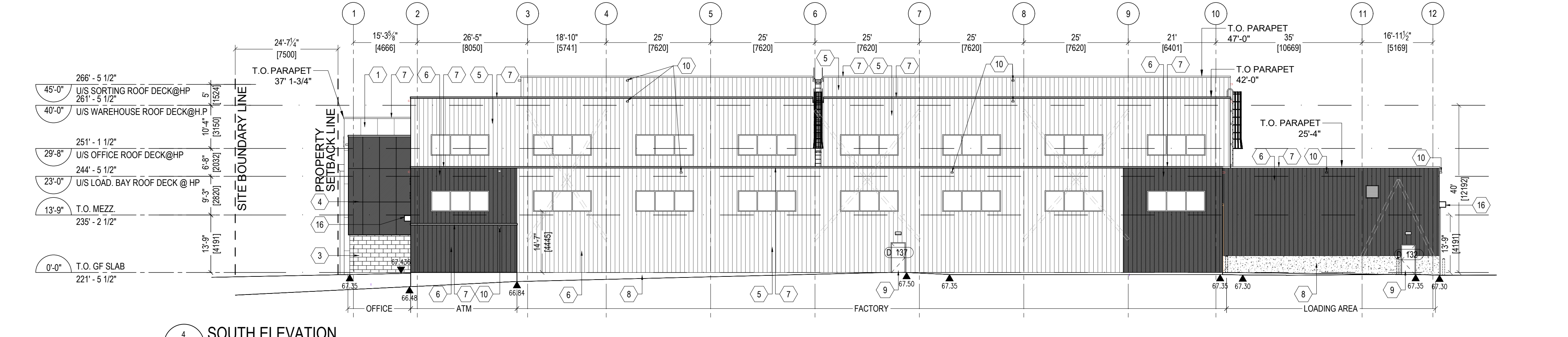
1 WEST ELEVATION
A3.01 SCALE: 1/16" = 1'-0"



2 NORTH ELEVATION
A3.01 SCALE: 1/16" = 1'-0"



3 EAST ELEVATION
A3.01 SCALE: 1/16" = 1'-0"



4 SOUTH ELEVATION
A3.01 SCALE: 1/16" = 1'-0"

- LEGEND**
- 1 ALUMINUM COMPOSITE PANEL ALUCOIL COLOUR: UM8RA GREY - 7022 - 04mm. PANEL SIZES: -VERTICAL: 8'x4'
 - 2 ALUMINUM COMPOSITE PANEL ALUCOIL COLOUR: TRD RED. THICKNESS: 3mm
 - 3 METAL SIDING 12" X 24" BLOCK PROFILE 1.5x30" PANEL LENGTH W/ AND VIEWS SCREWS COLOUR TO MATCH IMP IMP SOLID FLUOROPON PVDF COLOURS: KYMAR 500/XYLAR 5000 DOVE GREY
 - 4 ALUMINUM COMPOSITE PANEL ALUCOIL COLOUR: UM8RA GREY - 7022 - 04mm. PANEL SIZES: -HORIZONTAL: 8'x4'
 - 5 PRE-MANUFACTURED INSULATED METAL PANEL SYSTEM, SHADOWLINE VERTICAL ORIENTATION. COLOUR: 43SR1021 FLUORPON L/R SR DOVE GRAY
 - 6 PRE-MANUFACTURED INSULATED METAL PANEL SYSTEM, SHADOWLINE VERTICAL ORIENTATION. COLOUR: 43B21714 FLUORPON CHARCOAL
 - 7 PREFINISHED METAL FLASHING C/W DRIP EDGE, COLOUR: BLACK
 - 8 POURED CONCRETE
 - 9 INSULATED HOLLOW METAL DOOR, COLOUR TO MATCH KINGSPAN IMP CHARCOAL.
 - 10 PREFIN METAL SCUPPER COLOUR: BLACK
 - 11 SPANDREL GLAZING C/W INSULATED BACK PANEL. COLOUR: BLACK
 - 12 HIGH SPEED ROLL-UP OVERHEAD DOOR C/W MOTOR, TRACK AND HARDWARE. COLOUR TO MATCH KINGSPAN IMP CHARCOAL.
 - 13 TYP. 1" VERTICAL REVEAL JOINT C/W ACM FILLER PLATE. COLOUR: CHARCOAL. INSTALLER REVEALS PER MANUF. RECOMMENDATIONS.
 - 14 INTERNALLY LIT SIGNAGE, PROVIDE BLOCKING AND POWER. G.C. TO PROVIDE SHOP DRAWINGS.
 - 15 CURTAIN WALL GLAZING IN THERMALLY BROKEN ANODIZED ALUMINUM STOREFRONT FRAMING SYSTEM. FRAME COLOUR: BLACK.
 - 16 RED METAL CANOPY COLOUR RED TO MATCH ALUMINUM COMPOSITE PANEL. COLOUR SOLID TRC RED 4-TRC-30.
 - 17 INSULATED OVERHEAD DOOR COMPLETE WITH TRACK & HARDWARE. COLOUR: CHARCOAL. COLOUR TO MATCH KINGSPAN IMP CHARCOAL.
 - 18 ANODIZED ALUMINUM CLOSURE CAP / CORNER OR WINDOW SILL TO MATCH WINDOW BY WINDOW SUPPLIER
 - 19 OUTDOOR CAMERAS
 - 20 INTERNALLY LIT SIGNAGE, PROVIDE POWER SUPPLY AND 1/2" THICK EXTERIOR GRADE FINISH. FOR SIGNAGE MOUNTING. G.C. TO PROVIDE SHOP DRAWINGS.
 - 21 CANOPY C/W LIGHTING, ALUMINUM COMPOSITE MATERIAL ALUCOIL LARSON COLOUR: PEWTER MICA AND GAUGE TO BE CONFIRMED. REFER TO SECTION DETAILS 4 & 5/A-512.
 - 22 TYP. 1" VERTICAL REVEAL JOINT C/W ACM FILLER PLATE. COLOUR: CHARCOAL. INSTALL REVEALS PER MANUF. RECOMMENDATIONS.
 - 23 TYP. 1 1/2" HORIZONTAL REVEAL JOINT C/W ACM FILLER PLATE. COLOUR: CHARCOAL. INSTALLER REVEALS PER MANUF. RECOMMENDATIONS.
 - 24 INTERNALLY LIT SIGNAGE, PROVIDE BLOCKING AND POWER. G.C. TO PROVIDE SHOP DRAWINGS. REFER TO DETAILS FOR SIGNAGE INSTALLATION.
 - 25 GLASS & METAL SIGNAGE BAND BY SIGNAGE SUPPLIER. PROVIDE BLOCKING AS REQUIRED.
 - 26 DOCK SEAL
 - 27 CONTINUOUS BENT METAL CAP. 22 GA. PREFINISHED METAL C/W HIDDEN FASTENERS. COLOR TO MATCH WINDOW FRAME
 - 28 PREFINISHED METAL DRIP FLASHING. PAINT COLOUR TO MATCH ADJACENT EXTERIOR FINISH. TBC.
 - 29 HOT DIPPED GALVANIZED BENT STEEL PLATE AROUND 3 SIDES OF OPENING. SEE DETAILS
 - 30 CONTINUOUS BENT METAL CAP. 22 GA. PREFINISHED METAL C/W HIDDEN FASTENERS. COLOUR PEWTER. SEE DETAILS POS 342, 343, 344
 - 31 6" DIAMETER CONCRETE FILLED STEEL PROTECTION BOLLARD. 54" HIGH ABOVE GRADE.
 - 32 SWAGE CONNECTION REFER TO M&E MAX 900mm MIN 300mm ABOVE GRADE
 - 33 HOT DIPPED GALVANIZED STEEL GUARDRAIL AT LOADING RAMP. PAINTED YELLOW.
 - 34 HOT DIPPED GALVANIZED STEEL WALL PROTECTION. PAINTED YELLOW SEE DETAIL 4/A102.
 - 35 MECHANICAL LOUVER. PREFIN METAL. COLOUR TO MATCH WALL FINISH. REFER TO MECHANICAL
 - 36 ANODIZED ALUMINUM CLOSURE CAP / CORNER OR WINDOW SILL TO MATCH WINDOW BY WINDOW SUPPLIER
 - 37 EXTERIOR WALL PAK LIGHT. REFER TO ELECTRICAL
 - 38 PREFINISHED METAL IMP STACK JOINT COVER TRIM. COLOUR TO MATCH IMP BRONZE.
 - 39A PREFINISHED METAL IMP STACK JOINT COVER TRIM. COLOUR TO MATCH IMP PEWTER.
 - 39B PROVIDE POWER FOR SIGNAGE, CONFORM WITH SIGN SUPPLIER FOR POWER REQUIREMENTS
 - 39C TRAFFIC LIGHTS. REFER TO ELECTRICAL
 - 39D PREFINISHED METAL PARAPET CAP C/W LIGHTING, ALUMINUM COMPOSITE MATERIAL ALUCOIL LARSON FINISH : PEWTER MICA. GAUGE TBC. REFER TO A342 & A343.
 - 39E ALUMINUM COMPOSITE MATERIAL C/W CONTINUOUS BENT METAL CAP. 22GA. PRE-FINISHED VENTED METAL SOFFIT-ALUCOIL LARSON FINISH : PEWTER MICA.

- SYMBOLS LEGEND**
- A GRID LINE & DIMENSIONS REFER TO FLOOR PLANS
 - WINDOW TYPE NUMBER REFER TO WINDOW SCHEDULE
 - FINISH MATERIAL TAG

1. Contractor must verify all job dimensions, all drawings, details, specifications and report any discrepancies to owners before proceeding with work.
2. All drawings and specifications are instruments of service and the property of the architects which must be returned at the completion of the work, and may not be reproduced without their written permission.

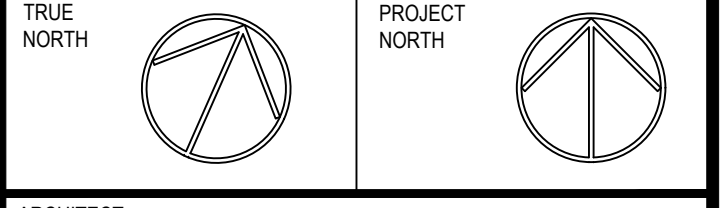
ref	description	date
02	ISSUED FOR SPC RESPONSE 2	2020-03-13
01	ISSUED FOR SPC RESPONSE 1	2020-01-17

revisions



DESIGN ARCHITECT	NICHOLAS CARAGIANIS ARCHITECT INC. 137 Pamela St. Ottawa, ON. K1S 3K9 tel: (613) 237-6801 fax: (613) 237-8289 email: shickey@ncarchitect.ca
STRUCTURAL ENGINEER	LEEKOR 359 Kent, Suite 501, Ottawa, ON. K2P 0R6 tel: (613) 234-0886 fax: (613) 233-4413 email: lee@leekor.com
MECHANICAL/ELECTRICAL	MIRITON 1716 Woodward Drive, Suite 200, Ottawa, ON. K2C 0P8 tel: (613) 722-5486 email: johnnie.chahwan@minton.com
CIVIL ENGINEER	NOVATECH 240 Michael Cowpland Drive, Suite 200, Ottawa, ON. K2M 1P6 tel: (613) 254-9643 fax: (613) 254-5867 email: f.thauvette@novatech-eng.com
PLANNING & URBAN DESIGN	NOVATECH 240 Michael Cowpland Drive, Suite 200, Ottawa, ON. K2M 1P6 tel: (613) 254-9643 fax: (613) 254-5867 email: t.gichrist@novatech-eng.com

OWNER:
AMERICAN IRON & METAL
9100, BOUL. HENRI-BOURASSA EST
MONTREAL, QUEBEC H1E 2S4
tel: 514-494-2000 aim-global.com



ARCHITECT:
nicholas caragianis architect inc.
137 Pamela Street, Ottawa, ON. K1S 3K9
t: 613 237 6801
f: 613 237 8989
e: info@ncarchitect.ca
www.ncarchitect.ca

PROJECT & LOCATION:
METAL RECYCLING PLANT
2555 SHEFFIELD ROAD
OTTAWA, ONT.

OFFICE FILE NUMBER: 19023

TITLE OF DRAWING:
BUILDING-A ELEVATIONS

SCALE: 1/16" = 1'-0"
DATE: MARCH 2019
DRAWN BY: GL, SH, CC, AA
DRAWING #: **A3.01**