

- LANDSCAPE LEGEND:**
- PROPERTY LIMIT
 - PROPOSED CONCRETE
 - PROPOSED HEAVY DUTY CONCRETE
 - OFF-SITE CONCRETE
 - CLEAR STONE
 - PROPOSED MUP
 - OFF-SITE MUP
 - PROPOSED SEED
 - PROPOSED SOD
 - PROPOSED PLANTING AREA
 - PROPOSED SHRUB PLANTING AREA
 - PROPOSED REFORESTATION
 - EXISTING VEGETATION TO PROTECT
 - PROPOSED TREE
 - OFF-SITE EXISTING TREES TO PROTECT
 - OFF-SITE FUTURE TREE
 - EXISTING TREE TO PROTECT
 - PROPOSED SHRUBS
 - OFF-SITE SHRUBS
 - TREE PROTECTION FENCE
 - PEDESTRIAN FENCE
 - SECURITY FENCE
 - RETAINING WALL
- GENERAL**
- Plant lists for Enlargements can be found on sheet 120025-L6.
 - The total canopy cover for the site is calculated to be < 40%. This is made up of:
 - Retained existing tree cover: 22,430m²
 - Deciduous Trees:
 - Large (15m diameter canopy): 292
 - Medium (10m diameter canopy): 54
 - Small (5m diameter canopy): 10
 - Coniferous trees: 205
 - Reforestation beds: 21,037m²

REFORESTATION / NATURALIZATION LISTS

120025 - Block 13 - Reforestation Material - Plant List

m ²		2000 mm O.C.		0.29 pcs/m ²	
%	QTY	BOTANICAL NAME	COMMON NAME	SIZE	COND. SPACING
Coniferous Trees					
5%	0	Abies balsamea	Balsam Fir	0.60m Ht.	PT 2.0m O.C.
5%	0	Larix laricina	Tamarack	0.60m Ht.	PT 2.0m O.C.
5%	0	Picea glauca	White Spruce	0.60m Ht.	PT 2.0m O.C.
5%	0	Pinus strobus	Eastern White Pine	0.60m Ht.	PT 2.0m O.C.
5%	0	Thuja occidentalis	Eastern White Cedar	0.60m Ht.	PT 2.0m O.C.
Deciduous Trees					
7%	0	Acer rubrum	Red Maple	1.20m Ht.	PT 2.0m O.C.
12%	0	Acer saccharum	Sugar Maple	1.20m Ht.	PT 2.0m O.C.
10%	0	Carya cordiformis	Bitternut Hickory	1.20m Ht.	PT 2.0m O.C.
10%	0	Celtis occidentalis	Hickory	1.20m Ht.	PT 2.0m O.C.
7%	0	Quercus macrocarpa	Bur Oak	1.20m Ht.	PT 2.0m O.C.
7%	0	Quercus rubra	Red Oak	1.20m Ht.	PT 2.0m O.C.
10%	0	Populus tremuloides	Trembling Aspen	1.20m Ht.	PT 2.0m O.C.
12%	0	Tilia americana	Basswood	1.20m Ht.	PT 2.0m O.C.

120025 - Block 13 - Reforestation Beside Yeti - Plant List

m ²		2000 mm O.C.		0.29 pcs/m ²	
%	QTY	BOTANICAL NAME	COMMON NAME	SIZE	COND. SPACING
Coniferous Trees					
15%	0	Picea glauca	White Spruce	0.60m Ht.	PT 2.0m O.C.
15%	0	Picea pungens	Colorado Spruce	0.60m Ht.	PT 2.0m O.C.
Deciduous Shrubs					
10%	0	Aronia melanocarpa	Black Chokeberry	45cm Ht.	PT 2.0m O.C.
10%	0	Diervilla lonicera	Northern Bush Honeysuckle	45cm Ht.	PT 2.0m O.C.
10%	0	Myrica pensylvanica	Bayberry	45cm Ht.	PT 2.0m O.C.
10%	0	Physocarpus opulifolius	Common Ninebark	45cm Ht.	PT 2.0m O.C.
10%	0	Rhus aromatica	Fragrant Sumac	45cm Ht.	PT 2.0m O.C.
10%	0	Rosa blanda	Meadow Rose	45cm Ht.	PT 2.0m O.C.
10%	0	Symphoricarpos alba	Snowberry	45cm Ht.	PT 2.0m O.C.

120025 - Block 13 - Shrub Naturalization Mix - Tall - Plant List

m ²		2000 mm O.C.		0.29 pcs/m ²	
%	QTY	BOTANICAL NAME	COMMON NAME	SIZE	COND. SPACING
Deciduous Shrubs					
10%	0	Aronia melanocarpa	Black Chokeberry	45cm Ht.	PT 2.0m O.C.
10%	0	Cornus sericea	Red Osier Dogwood	45cm Ht.	PT 2.0m O.C.
10%	0	Physocarpus opulifolius	Common Ninebark	45cm Ht.	PT 2.0m O.C.
10%	0	Rhus aromatica	Fragrant Sumac	45cm Ht.	PT 2.0m O.C.
10%	0	Rhus typhina	Staghorn Sumac	45cm Ht.	PT 2.0m O.C.
10%	0	Rosa blanda	Meadow Rose	45cm Ht.	PT 2.0m O.C.
10%	0	Rubus occidentalis	Black Raspberry	45cm Ht.	PT 2.0m O.C.
10%	0	Rubus odoratus	Flowering Raspberry	45cm Ht.	PT 2.0m O.C.
10%	0	Sambucus canadensis	American Black Elderberry	45cm Ht.	PT 2.0m O.C.
10%	0	Symphoricarpos alba	Snowberry	45cm Ht.	PT 2.0m O.C.

120025 - Block 13 - Shrub Naturalization Mix - Short - Plant List

m ²		2000 mm O.C.		0.29 pcs/m ²	
%	QTY	BOTANICAL NAME	COMMON NAME	SIZE	COND. SPACING
Deciduous Shrubs					
10%	0	Aronia melanocarpa	Black Chokeberry	45cm Ht.	PT 1.0m O.C.
10%	0	Chelidonium majus	Hummingbird Summersweet	45cm Ht.	PT 1.0m O.C.
10%	0	Cornus sericea	Red Osier Dogwood	45cm Ht.	PT 1.0m O.C.
15%	0	Diervilla lonicera	Northern Bush Honeysuckle	45cm Ht.	PT 1.0m O.C.
20%	0	Hypericum kalmianum	Kalm's St. John's Wort	45cm Ht.	PT 1.0m O.C.
15%	0	Myrica pensylvanica	Bayberry	45cm Ht.	PT 1.0m O.C.
20%	0	Rhus aromatica	Gro-Low Fragrant Sumac	45cm Ht.	PT 1.0m O.C.

NOTE:
THE POSITION OF ALL POLE LINES, CONDUITS,
WATERMANS, SEWERS AND OTHER
UNDERGROUND AND OVERGROUND UTILITIES AND
STRUCTURES IS NOT NECESSARILY SHOWN ON
THE CONTRACT DRAWINGS, AND WHERE SHOWN,
THE ACCURACY OF THE POSITION OF SUCH
UTILITIES AND STRUCTURES IS NOT GUARANTEED.
BEFORE STARTING WORK, DETERMINE THE EXACT
LOCATION OF ALL SUCH UTILITIES AND
STRUCTURES AND ASSUME ALL LIABILITY FOR
DAMAGE TO THEM.

--	--	--	--	--	--	--	--	--	--	--	--	--	--	--	--	--	--	--	--	--	--	--	--	--	--	--	--	--	--	--	--	--	--	--	--	--	--	--	--	--	--	--	--	--	--	--	--	--	--	--	--	--	--	--	--	--	--	--	--	--	--	--	--	--	--	--	--	--	--	--	--	--	--	--	--	--	--	--	--	--	--	--	--	--	--	--	--	--	--	--	--	--	--	--	--	--	--	--	--	--	--	--	--	--	--	--	--	--	--	--	--	--	--	--	--	--	--	--	--	--	--	--	--	--	--	--	--	--	--	--	--	--	--	--	--	--	--	--	--	--	--	--	--	--	--	--	--	--	--	--	--	--	--	--	--	--	--	--	--	--	--	--	--	--	--	--	--	--	--	--	--	--	--	--	--	--	--	--	--	--	--	--	--	--	--	--	--	--	--	--	--	--	--	--	--	--	--	--	--	--	--	--	--	--	--	--	--	--	--	--	--	--	--	--	--	--	--	--	--	--	--	--	--	--	--	--	--	--	--	--	--	--	--	--	--	--	--	--	--	--	--	--	--	--	--	--	--	--	--	--	--	--	--	--	--	--	--	--	--	--	--	--	--	--	--	--	--	--	--	--	--	--	--	--	--	--	--	--	--	--	--	--	--	--	--	--	--	--	--	--	--	--	--	--	--	--	--	--	--	--	--	--	--	--	--	--	--	--	--	--	--	--	--	--	--	--	--	--	--	--	--	--	--	--	--	--	--	--	--	--	--	--	--	--	--	--	--	--	--	--	--	--	--	--	--	--	--	--	--	--	--	--	--	--	--	--	--	--	--	--	--	--	--	--	--	--	--	--	--	--	--	--	--	--	--	--	--	--	--	--	--	--	--	--	--	--	--	--	--	--	--	--	--	--	--	--	--	--	--	--	--	--	--	--	--	--	--	--	--	--	--	--	--	--	--	--	--	--	--	--	--	--	--	--	--	--	--	--	--	--	--	--	--	--	--	--	--	--	--	--	--	--	--	--	--	--	--	--	--	--	--	--	--	--	--	--	--	--	--	--	--	--	--	--	--	--	--	--	--	--	--	--	--	--	--	--	--	--	--	--	--	--	--	--	--	--	--	--	--	--	--	--	--	--	--	--	--	--	--	--	--	--	--	--	--	--	--	--	--	--	--	--	--	--	--	--	--	--	--	--	--	--	--	--	--	--	--	--	--	--	--	--	--	--	--	--	--	--	--	--	--	--	--	--	--	--	--	--	--	--	--	--	--	--	--	--	--	--	--	--	--	--	--	--	--	--	--	--	--	--	--	--	--	--	--	--	--	--	--	--	--	--	--	--	--	--	--	--	--	--	--	--	--	--	--	--	--	--	--	--	--	--	--	--	--	--	--	--	--	--	--	--	--	--	--	--	--	--	--	--	--	--	--	--	--	--	--	--	--	--	--	--	--	--	--	--	--	--	--	--	--	--	--	--	--	--	--	--	--	--	--	--	--	--	--	--	--	--	--	--	--	--	--	--	--	--	--	--	--	--	--	--	--	--	--	--	--	--	--	--	--	--	--	--	--	--	--	--	--	--	--	--	--	--	--	--	--	--	--	--	--	--	--	--	--	--	--	--	--	--	--	--	--	--	--	--	--	--	--	--	--	--	--	--	--	--	--	--	--	--	--	--	--	--	--	--	--	--	--	--	--	--	--	--	--	--	--	--	--	--	--	--	--	--	--	--	--	--	--	--	--	--	--	--	--	--	--	--	--	--	--	--	--	--	--	--	--	--	--	--	--	--	--	--	--	--	--	--	--	--	--	--	--	--	--	--	--	--	--	--	--	--	--	--	--	--	--	--	--	--	--	--	--	--	--	--	--	--	--	--	--	--	--	--	--	--	--	--	--	--	--	--	--	--	--	--	--	--	--	--	--	--	--	--	--	--	--	--	--	--	--	--	--	--	--	--	--	--	--	--	--	--	--	--	--	--	--	--	--	--	--	--	--	--	--	--	--	--	--	--	--	--	--	--	--	--	--	--	--	--	--	--	--	--	--	--	--	--	--	--	--	--	--	--	--	--	--	--	--	--	--	--	--	--	--	--	--	--	--	--	--	--	--	--	--	--	--	--	--	--	--	--	--	--	--	--	--	--	--	--	--	--	--	--	--	--	--	--	--	--	--	--	--	--	--	--	--	--	--	--	--	--	--	--	--	--	--	--	--	--	--	--	--	--	--	--	--	--	--	--	--	--	--	--	--	--	--	--	--	--	--	--	--	--	--	--	--	--	--	--	--	--	--	--	--	--	--	--	--	--	--	--	--	--	--	--	--	--	--	--	--	--	--	--	--	--	--	--	--	--	--	--	--	--	--	--	--	--	--	--	--	--	--	--	--	--	--	--	--	--	--	--	--	--	--	--	--	--	--	--	--	--	--	--	--	--	--	--	--	--	--	--	--	--	--	--	--	--	--	--	--	--	--	--	--	--	--	--	--	--	--	--	--	--	--	--	--	--	--	--	--	--	--	--	--	--	--	--	--	--	--	--	--	--	--	--	--	--	--	--	--	--	--	--	--	--	--	--	--	--	--	--	--	--	--	--	--	--	--	--	--	--	--	--	--	--	--	--	--	--	--	--	--	--	--	--	--	--	--	--	--	--	--	--	--	--	--	--	--	--	--	--	--	--	--	--	--	--	--	--	--	--	--	--	--	--	--	--	--	--	--	--	--	--	--	--	--	--	--	--	--	--	--	--	--	--	--	--	--	--	--	--	--	--	--	--	--	--	--	--	--	--	--	--	--	--	--	--	--	--	--	--	--	--	--	--	--	--	--	--	--	--	--	--	--	--	--	--	--	--	--	--	--	--	--	--	--	--	--	--	--	--	--	--	--	--	--	--	--	--	--	--	--	--	--	--	--	--	--	--	--	--	--	--	--	--	--	--	--	--	--	--	--	--	--	--	--	--	--	--	--	--	--	--	--	--	--	--	--	--	--	--	--	--	--	--	--	--	--	--	--	--	--	--	--	--	--	--	--	--	--	--	--	--	--	--	--	--	--	--	--	--	--	--	--	--	--	--	--	--	--	--	--	--	--	--	--	--	--	--	--	--	--	--	--	--	--

TREE PLANT LISTS

120025 - Block 13 - Trees in Parking Islands - Plant List

KEY	QTY	BOTANICAL NAME	COMMON NAME	SIZE	COND.	SPACING
Deciduous Trees						
NRN	0	Acer rubrum 'Northwood'	Northwood Red Maple	50mm Cal	WB	As Shown
AFAP	0	Acer x freemanii 'Autumn Fantasy'	Autumn Fantasy Maple	50mm Cal	WB	As Shown
AFCM	0	Acer x freemanii 'Celestial'	Celestial Maple	50mm Cal	WB	As Shown
CCO	0	Corylus colona	Turkish Hazelnut	50mm Cal	WB	As Shown
GTI	0	Gleditsia inaequalis var. nemis 'Impicola'	Imperial Honeylocust	50mm Cal	WB	As Shown
GTK	0	Gleditsia inaequalis var. nemis 'Skycoke'	Skyline Honeylocust	50mm Cal	WB	As Shown
TAC	0	Tilia americana 'Continental Appeal'	Continental Appeal Linden	50mm Cal	WB	As Shown
UAI	0	Ulmus x 'New Horizon'	New Horizon Elm	50mm Cal	WB	As Shown

120025 - Block 13 - Trees in the Centre Parking Island - Plant List

KEY	QTY	BOTANICAL NAME	COMMON NAME	SIZE	COND.	SPACING
Deciduous Trees						
ASB	0	Acer saccharum 'Barnett Cole'	Apollo Sugar Maple	50mm Cal	WB	As Shown
ABA	0	Amelanchier x grandiflora 'Autumn Brilliance'	Autumn Brilliance Serviceberry	50mm Cal	WB	As Shown
MES	0	Malus 'Spring Snow'	Spring Snow Crabapple	50mm Cal	WB	As Shown

120025 - Block 13 - Trees along Perimeter - Plant List

KEY	QTY	BOTANICAL NAME	COMMON NAME	SIZE	COND.	SPACING
Coniferous Trees						
AB	0	Abies balsamea	Balsam Fir	200cm Ht.	WB	As Shown
LL	0	Larix laricina	Tamarack	200cm Ht.	WB	As Shown
PG	0	Picea glauca	White Spruce	200cm Ht.	WB	As Shown
PS	0	Pinus strobus	Eastern White Pine	200cm Ht.	WB	As Shown
TO	0	Thuja occidentalis	Eastern White Cedar	200cm Ht.	WB	As Shown
Deciduous Trees						
ASBF	0	Acer saccharum 'Fall Fiesta'	Fall Fiesta Sugar Maple	50mm Cal	WB	As Shown
AFAP	0	Acer x freemanii 'Autumn Fantasy'	Autumn Fantasy Maple	50mm Cal	WB	As Shown
AFMO	0	Acer x freemanii 'Marmora'	Marmora Maple	50mm Cal	WB	As Shown
CCO	0	Celtis occidentalis	Hickory	50mm Cal	WB	As Shown
GTS	0	Gleditsia inaequalis var. nemis 'Shademaster'	Shademaster Honeylocust	50mm Cal	WB	As Shown
GTK	0	Gleditsia inaequalis var. nemis 'Skycoke'	Skyline Honeylocust	50mm Cal	WB	As Shown
GM	0	Quercus macrocarpa	Bur Oak	50mm Cal	WB	As Shown
QR	0	Quercus rubra	Red Oak	50mm Cal	WB	As Shown
TAC	0	Tilia americana 'Continental Appeal'	Continental Appeal Linden	50mm Cal	WB	As Shown
TAR	0	Tilia americana 'Redmond'	Redmond Linden	50mm Cal	WB	As Shown
UAV	0	Ulmus americana 'Valley Forge'	Valley Forge Elm	50mm Cal	WB	As Shown
UAP	0	Ulmus americana 'Princeton'	Princeton Elm	50mm Cal	WB	As Shown



LOCATION
PROJECT PYTHON
222 CITIGATE DRIVE, CITY OF OTTAWA

DRAWING NAME
OVERALL LANDSCAPE PLAN

PROJECT No.	120025-00
REV	REV # 1
DRAWING No.	120025-L1



Block 2 - Costco

O'KEEFE DRAIN

O'Keefe Drain

SEE ENLARGEMENT A ON 120025-L6

promenade CitiGate Drive

0.75m DEPTH PLANTING SOIL FOR TREE BEDS IN THIS PARKING ISLAND

PLACE THREE PATIO STONES FOR PEDESTRIAN CONNECTIONS, TYPICAL

0.75m DEPTH PLANTING SOIL FOR TREE BEDS IN THIS PARKING ISLAND

CONTINUOUS MULCH TREATMENT AND PLANTING SOIL TRENCH 0.75m DEPTH FOR NARROW PARKING ISLANDS WITHOUT PEDESTRIAN WALKWAYS, TYPICAL

CONTINUOUS MULCH TREATMENT AND PLANTING SOIL TRENCH 0.75m DEPTH FOR NARROW PARKING ISLANDS WITHOUT PEDESTRIAN WALKWAYS, TYPICAL

WATER METER CHAMBER

FUTURE SEATING / EXERCISE PEDESTRIAN NODE

UNDERGROUND STORMWATER STORAGE TANK

UNDERGROUND STORMWATER STORAGE TANK

0.75m DEPTH CONTINUOUS PLANTING SOIL TRENCH FOR THIS PARKING ISLAND

2.00

1.00

SWALE

SWALE

UNDERGROUND STORMWATER STORAGE TANK

SNOW STORAGE AREA

PEDESTRIAN SHELTER 15x7

HYDRANT

HYDRANT

SECURED CHAIN LINK EMPLOYEE SMOKING AREA

CLEAR STONE MULCH TO BE USED FOR PLANTING AREAS ADJACENT TO THE BUILDING, TYPICAL

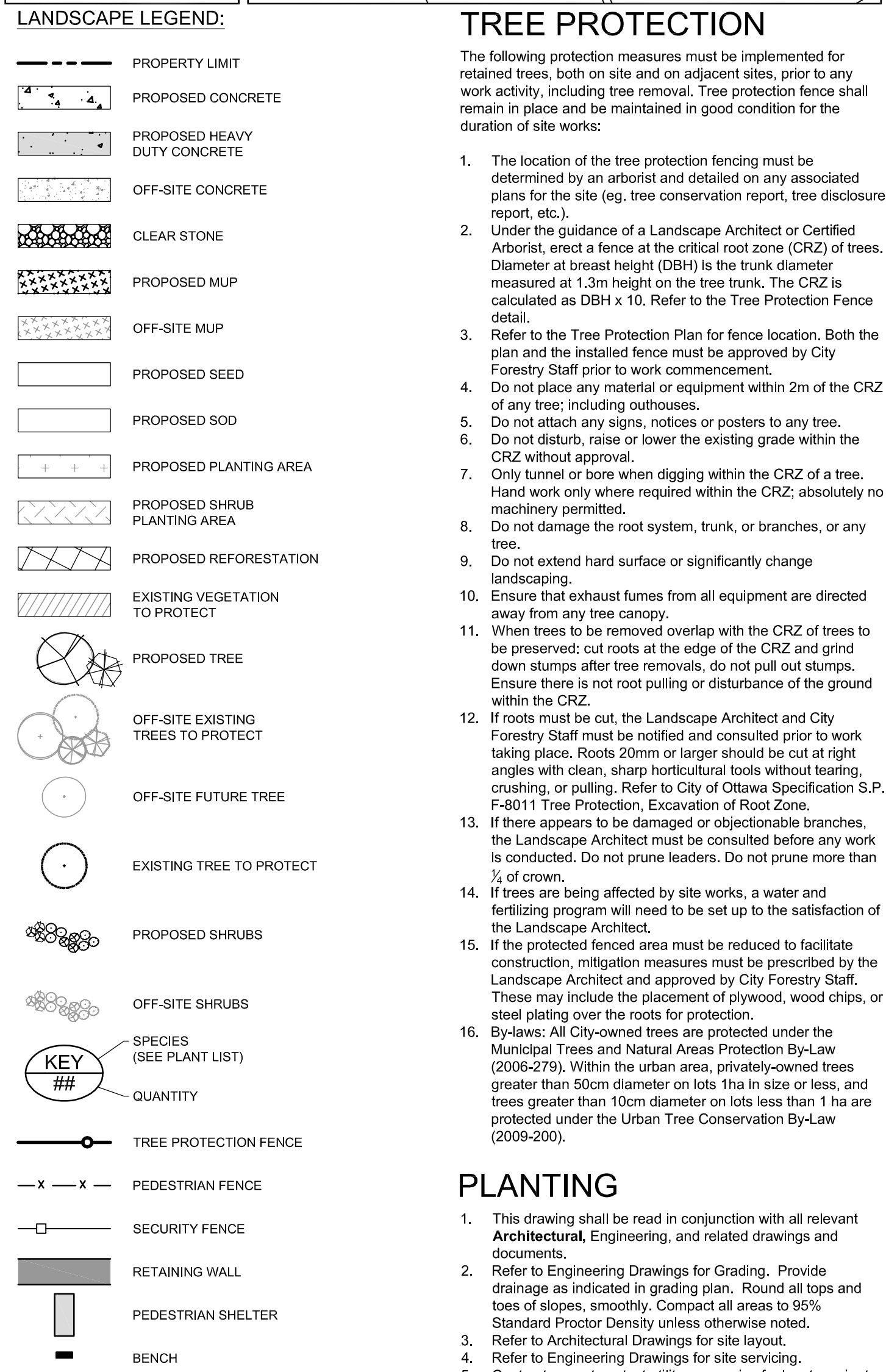
Proposed Building

SEE ENLARGEMENT B ON 120025-L6

SEE 120025-L2

SEE 120025-L4

rue Systemhouse Street



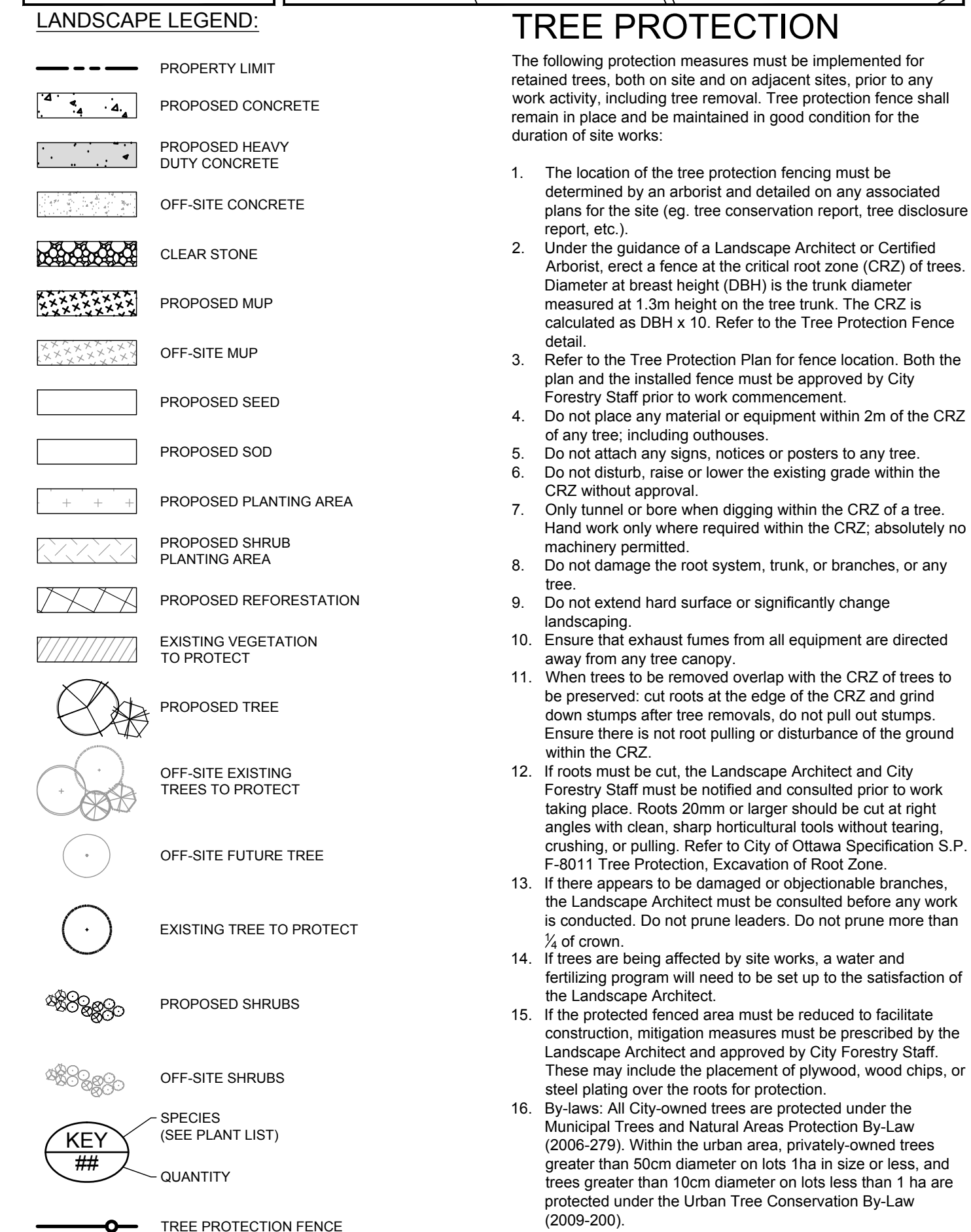
1. The following protection measures must be implemented for retained trees, both on site and on adjacent sites, prior to any work activity, including tree removal. Tree protection fence shall be installed around trees and be secured in good condition for the duration of the site works:
2. The location of the tree protection fencing must be determined by an arborist and detailed on any associated plans for the site (eg, tree conservation report, tree disclosure report, etc.).
3. Under the guidance of a Landscape Architect or Certified Arborist, erect a fence at the critical root zone (CRZ) of trees, which is the area around the trunk of a tree where the roots are measured at 1.3m height on the tree trunk. The CRZ is calculated as DBH x 10. Refer to the Tree Protection Fence detail.
4. Refer to the Tree Protection Plan for fence location. Both the plan and the installed fence must be approved by City Forestry Staff prior to work commencement.
5. Do not plant any material or equipment within 2m of the CRZ of any tree, including outcrops.
6. Do not attach any signs, notices or posters to any tree, or to any other nearby structure or existing grade within the CRZ without approval.
7. Only tunnel or bore when digging within the CRZ of a tree, and only where required within the CRZ, absolutely no machinery permitted.
8. Do not damage the root system, trunk, or branches, or any tree.
9. Do not extend hard surface or privately-owned landscaping.
10. Ensure that exhaust fumes from all equipment are directed away from trees and canopy.
11. When trees to be removed overlap with the CRZ of trees to be preserved: cut roots at the edge of the CRZ and grind remaining roots to a smooth finish. Do not cut roots at the CRZ. Ensure there is no root pulling or disturbance of the ground within the CRZ.
12. If a tree must be cut, the Landscape Architect and City Forestry Staff must be notified and consulted prior to work taking place. Roots 200mm or larger should be cut at right angles with clean, sharp horticultural tools without tearing, crushing, or ringing. Refer to the City of Vancouver Staff, F-8011 Tree Protection, Excavation of Root Zone.
13. If there appears to be damaged or objectionable branches, or if there is any other concern, a tree assessment or tree health check should be conducted. Do not prune leaders. Do not prune more than 1/3 of crown.
14. If trees are being affected by site works, a water and fertilizing program will need to be set up to the satisfaction of the Landscape Architect.
15. If the protected fenced area must be reduced to facilitate construction, mitigation measures must be prescribed by the Landscape Architect and approved by City Forestry Staff. These may include the placement of plywood, wood chips, or other materials over the ground.
16. By-laws: All City-owned trees are protected under the Municipal Trees and Natural Areas Protection By-Law (2009-2010). Within the urban area, privately-owned trees greater than 50cm diameter on lots 1ha in size or less, and trees greater than 10cm diameter on lots less than 1 ha are protected under the Urban Tree Conservation By-Law (2009-2010).

1. This drawing shall be read in conjunction with all relevant **Architectural**, Engineering, and related drawings and documents.
2. **Refer to Engineering Drawings for Grading.** Provide drainage as indicated in grading plan. Round all tops and toes of slopes, smoothly. Compact all areas to 95% Standard Proctor Density. Uncompacted all areas.
3. **Refer to Architectural Drawings for site layout.**
4. **Refer to Engineering Drawings for site servicing.**
5. **Contractor must contact utility companies for locates prior to planting.**
6. **It is essential to use the plans and details in conjunction with the specifications and notes.**
7. **Ensure that all trees and shrubs shall be protected according to the contract detail and specifications.**
8. **Plant material shall be No. 1 Grade and shall comply with Canadian Standards for Nursery Stock (latest edition)**
9. **Plant material shall be certified by the Canadian Association.** Use plant material with strong fibrous root system free of disease, defects or injuries, and structurally sound. Use trees with straight trunk and without character defects or injuries. Obtain approval from consultant of plant material at source prior to digging. All trees and shrubs shall be container grown, potted, W/B or B/B, as indicated on Plant List. Plant material shall be acceptable for certain species and as approved by the Landscape Architect.
10. **Plant material substitutions shall not be permitted without the written approval from the consultant, with 48 hours notice, prior to shipping plant material.**
11. **Plant locations are schematic / approximate only.**
12. **Planting order shall be as indicated on site for approval by the Landscape Architect prior to installation.** The illustrated number of plants shown in the Planting Plan is intended to estimate the quantity of plants required. Contractor to report any discrepancies to the Landscape Architect prior to installation. Contractor will assume full responsibility if the Landscape Architect is not notified.
13. **Ensure that all trees and shrubs shall be protected as indicated.** Plant material to be installed in a continuous planting bed of 450mm depth with approved topsoil covered with 75mm depth shredded bark mulch.
14. **For re-plantation beds, refer to the detail on Sheet 12002S-01.**
15. **Ensure trees are thoroughly watered following planting.** Monitor material and ensure adequate moisture until acclimatized.
16. **In heavy clay or poorly drained soils, set root ball with root collar 75-100mm higher than finished grade.**
17. **Soil shall be amended with approved topsoil as specified.** Soil shall be No. 1 Kentucky Bluegrass Sod grown from minimum mixture of 3 Kentucky Bluegrass cultivars. Quality and source shall comply with Canadian Standards for Nursery Stock (latest edition) published by the Canadian Nursery Landscape Nursery Landscape Association. Unless otherwise specified, turf is to be installed in a continuous strip or a second cutting is accepted by the Landscape Architect.
18. **Apply the following mineral fertilizer unless soil tests show other requirements:** Sodded areas - (8-32-10) % Nitrogen, 16% Phosphorus, 16% Potassium; Sodded areas with Planting Beds - (8-32-14) - 8% Nitrogen, 32% Phosphorus, 16% Potassium (as per manufacturer specifications).
19. **Protect all areas damaged or disturbed beyond Limit of Work.**

1.	APPLICATION FOR SITE PLAN APPROVAL	APR 9/20	JP
No.	REVISION	DATE	BY

DESIGN	KW/JF
CHECKED	JF
DRAWN	KW
CHECKED	JF
APPROVED	RJ

PROJECT No.	120025-00
REV	REV # 1
DRAWING No.	120025-L3



- # TREE PROTECTION
- The following protection measures must be implemented for existing trees, both on site and on adjacent sites for any work activity, including tree removal. Tree protection fence shall remain in place and be maintained in good condition for the duration of site works:
1. The location of the tree protection fencing must be determined by an arborist and detailed on any associated plans for the site (e.g. tree conservation report, site location plan, etc.).
 2. Under the guidance of a Landscape Architect or Certified Arborist, the fence shall be placed around the CRZ of trees. Diameter at breast height (DBH) is the trunk diameter measured at 1.3m height on the tree trunk. The CRZ is calculated as DBH x 10. Refer to the Tree Protection Fence Diagram.
 3. Refer to the Tree Protection Plan for fence location. Both the plan and the installed fence must be approved by City Forestry Staff prior to work commencing.
 4. Do not place any material or equipment within 2m of the CRZ of any tree; including outcrops.
 5. Do not attach signs or notices to the posts to any tree.
 6. Do not disturb, raise or lower the existing grade within the CRZ without approval.
 7. Once inside the zone when digging within the CRZ of a tree. Hand work only where required within the CRZ of a tree. No machinery permitted.
 8. Do not damage the root system, trunk, or branches, or any tree.
 9. Do not extend hand power or significantly change landscaping.
 10. Ensure that exhaust fumes from all equipment are directed away from any tree canopy.
 11. When trees to be removed overlap with the CRZ of trees to be retained, cut roots, and remove the trees to be removed. Do not dump stumps after tree removals, do not pull out stumps. Ensure there is not root pulling or disturbance of the ground within the CRZ.
 12. If roots must be cut, the Landscape Architect and City Forestry Staff must be notified and consulted prior to work taking place. Roots 20mm or larger should be cut at right angles to the trunk, sharp edges should be smoothed and leaning, or pulling. Refer to City of Ottawa Specification S-1-F-8011 Tree Protection, Excavation of Root Zone.
 13. Once approved to be inside the CRZ of a tree, the Landscape Architect must be consulted before any work is conducted. Do not prune leaders. Do not prune more than 1/3 of crown.
 14. If trees are being affected by site works, a water and fertilizing program will need to be set up to the satisfaction of the Landscape Architect.
 15. The tree protection fence must be reduced to facilitate construction, mitigation measures must be prescribed by the Landscape Architect and approved by City Forestry Staff. The fence may be placed over plywood, wood chips, or steel plating over the roots for protection.
 16. By-laws: All City-owned trees are protected under the Municipal Trees and Natural Areas Protection By-law (2008-278). Within the urban area, privately-owned trees greater than 50cm diameter on lots 1ha in size or less, and trees greater than 10cm diameter on lots less than 1 ha are protected under the Urban Tree Conservation By-law (2009-200).

This drawing shall be read in conjunction with all relevant Architectural, Engineering, and detailed drawings and documents.

1. Refer to Engineering Drawings for Grading. Provide drainage as indicated in grading plan. Round all tops and ends of slopes, smoothly. Compact all areas to 95% Standard Proctor Density.

2. Refer to Architectural Drawings for site layout.

3. Refer to Engineering Drawings for site servicing.

4. Contractor must contact utility companies for locates prior to any excavation or planting.

5. It is essential to use the plans and details in conjunction with the specifications and notes.

6. Existing structures to be retained shall be protected according to the contract detail and specifications.

7. Plant material shall be No. 1 Grade and shall comply with Canadian Standards for Nursery Stock (latest edition) published by the Canadian Nursery Landscape Association.

8. Use plant material with strong fibrous root system free of disease, defects or injuries, and structurally sound. Use plants with slight trunk lean. Do not use plants with a wide branch for species. Obtain approval from consultant of plant material at source prior to digging. All trees and shrubs shall be container grown, potted, W/B or B/B, as specified on the Plant List.

9. Plant material shall be inspected and approved by the Landscape Architect.

10. Plant material substitutions shall not be permitted without the written approval from the consultant, with **48 hours notice**, prior to shipping plant material.

11. Plant locations are schematic / approximate only.

12. **Contractor shall install all plants on site for approval by the Landscape Architect prior to installation.** The illustrated number of plants shown in the Planting Plan provides the estimated quantity of plants to be installed. Contractor to report any discrepancies to Landscape Architect prior to installation. Contractor will assume full responsibility if the Landscape Architect is not notified.

13. **Plant in Pots.** Vines and trees to be planted shall be planted in a continuous planting bed of **450mm** depth with approved topsoil covered with **75mm** depth shredded bark mulch. **For container beds, refer to the detail on Sheet 0225-L-01.**

14. Ensure trees are thoroughly watered following planting. Monitor material and ensure adequate moisture until acceptance.

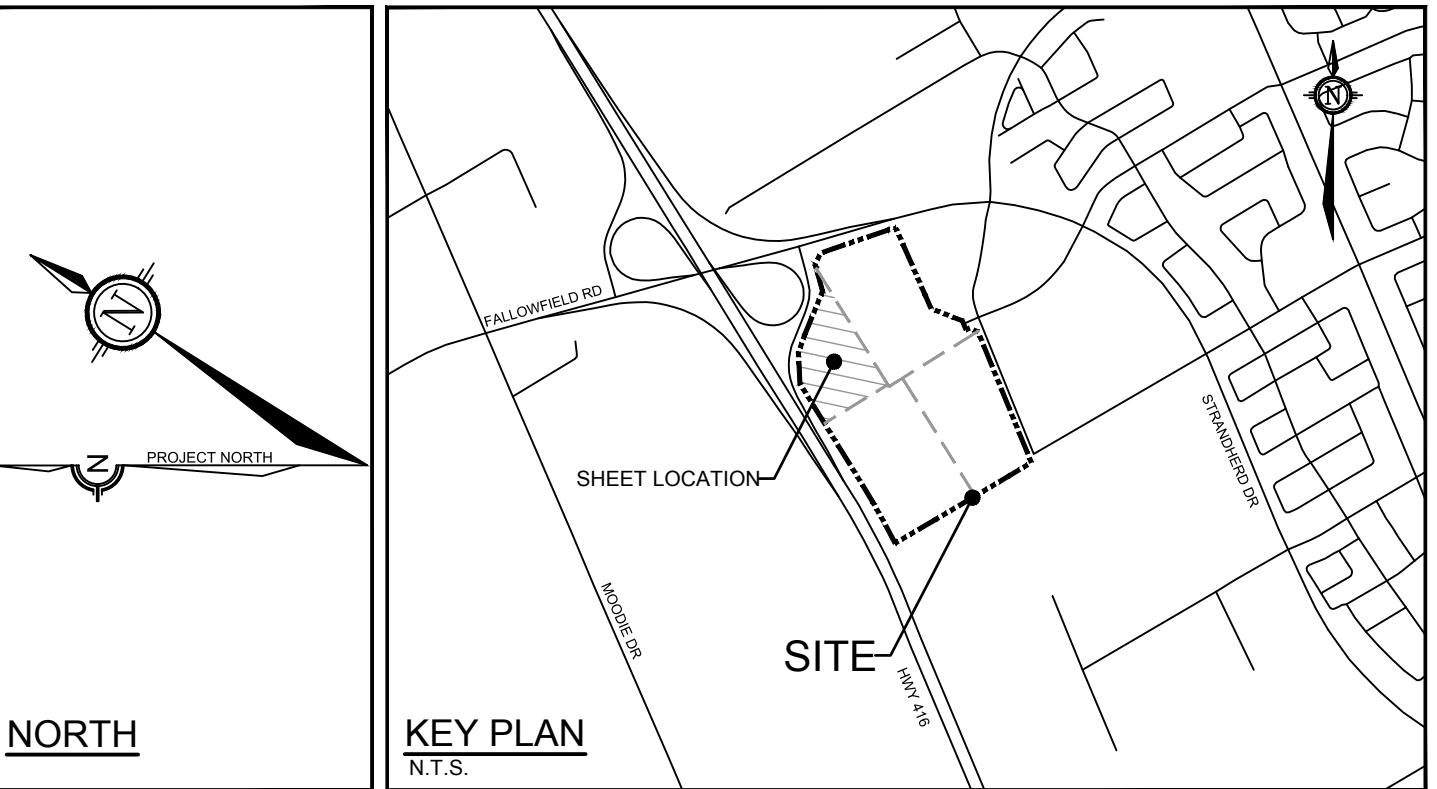
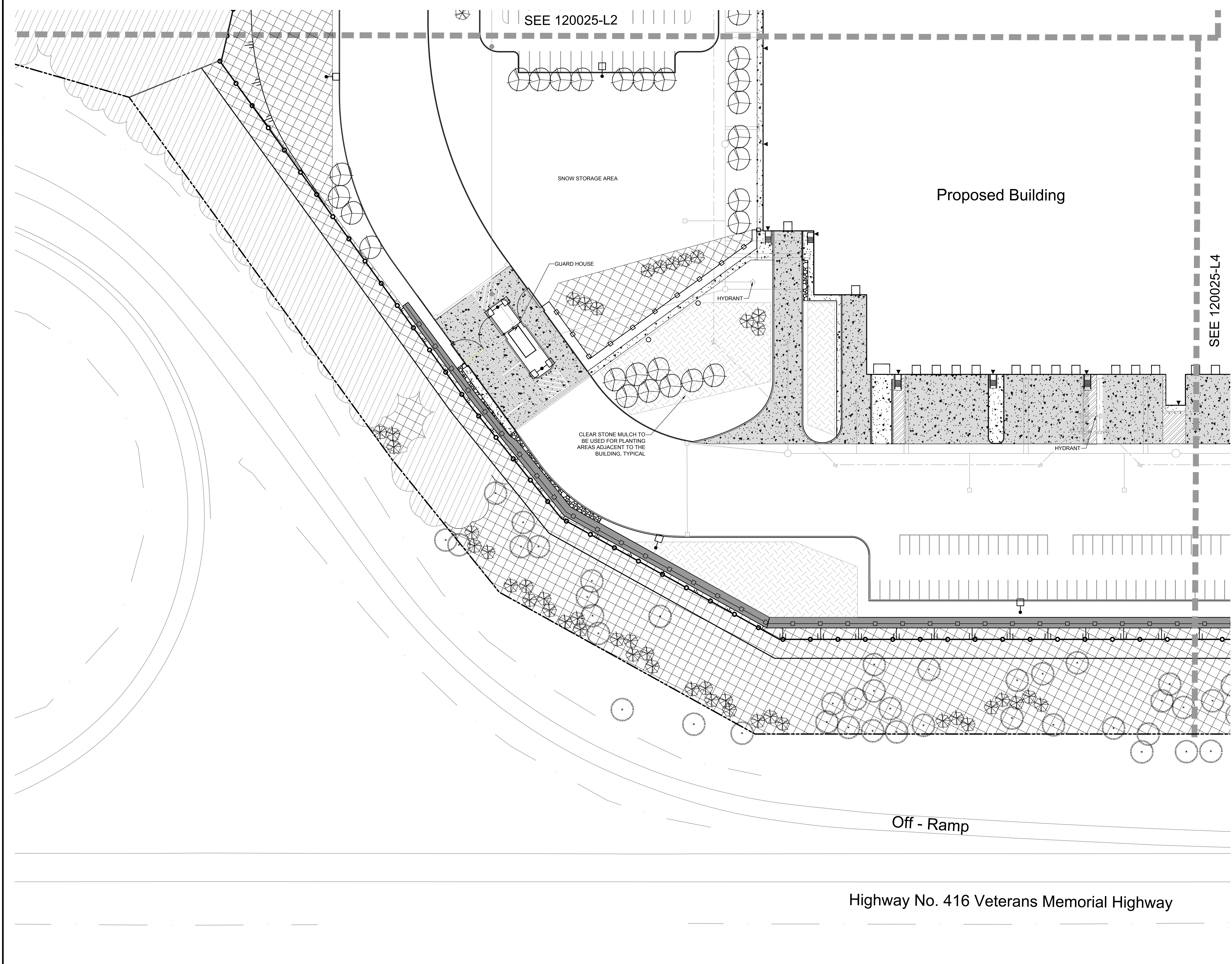
15. Heavy clay or poorly drained soils, set root ball with root collar 75-100mm higher than finished grade.

16. Soil in interior and exterior planting beds shall be the type as specified. Soil shall be No. 1 Kentucky Bluegrass Sod grown from minimum mixture of 3 Kentucky Bluegrass cultivars. Quality and source shall comply with Canadian Standards for Nursery Stock (latest edition) published by the Canadian Nursery Landscape Association. Unless otherwise specified, turf is maintained by the contractor for a second cutting in accordance with the Landscape Architect.

17. Apply the following mineral fertilizer unless soil tests show other requirements. **Sodded areas:** (8-32-16) % Nitrogen, 16% Phosphorus, 16% Potassium. **Planting Beds:** (8-32-16) % Nitrogen, 32% Phosphorus, 16% Potash as per manufacturer specifications.

18. Translocate all areas damaged or disturbed beyond the Limit of Work.

<p>NOTE:</p> <p>1. THE POSITION OF ALL POLE LINES, CONDUITS, WATERMANS, SEWERS AND OTHER UNDERGROUND AND OVERGROUND UTILITIES AND STRUCTURES IS NOT NECESSARILY SHOWN ON THE CONTRACT DRAWINGS, AND WHERE SHOWN, THE ACCURACY OF THE POSITION OF SUCH UTILITIES AND STRUCTURES IS NOT GUARANTEED. BEFORE STARTING WORK, DETERMINE THE EXACT LOCATION OF ALL SUCH UTILITIES AND STRUCTURES AND ASSUME ALL LIABILITY FOR DAMAGE TO THEM.</p>				<p>DESIGN</p> <p>1. APPLICATION FOR SITE PLAN APPROVAL</p> <p>APR 9/20</p> <p>JP</p>				<p>SCALE</p> <p>1:500</p> <p>0 5 10 15 20</p>				<p>DESIGN</p> <p>KW,JP</p> <p>CHECKED</p> <p>JP</p> <p>DRAWN</p> <p>KW</p> <p>CHECKED</p> <p>JP</p> <p>APPROVED</p> <p>RJ</p>				<p>FOR REVIEW ONLY</p> <p>ASSOCIATION OF LANDSCAPE ARCHITECTS ONTARIO</p> <p>LANDSCAPE ARCHITECT</p> <p>MEMBER</p> <p>APR 9, 2020</p>				<p>NOVATECH</p> <p>Engineers, Planners & Landscape Architects</p> <p>Suite 200, 240 Michael Cowpland Drive</p> <p>Ottawa, Ontario, Canada K2M 1P6</p> <p>Telephone (613) 254-9641</p> <p>Facsimile (613) 254-5867</p> <p>Website www.novatech-eng.com</p>				<p>LOCATION</p> <p>PROJECT PYTHON</p> <p>222 CITIGATE DRIVE, CITY OF OTTAWA</p> <p>DRAWING NAME</p> <p>LANDSCAPE PLAN</p> <p>PROJECT No.</p> <p>120025-00</p> <p>REV</p> <p>REV # 1</p> <p>DRAWING No.</p> <p>120025-L4</p>			
--	--	--	--	--	--	--	--	---	--	--	--	---	--	--	--	---	--	--	--	---	--	--	--	---	--	--	--



LANDSCAPE LEGEND:

- PROPERTY LIMIT
- PROPOSED CONCRETE
- PROPOSED HEAVY DUTY CONCRETE
- OFF-SITE CONCRETE
- CLEAR STONE
- PROPOSED MUP
- OFF-SITE MUP
- PROPOSED SEED
- PROPOSED SOD
- PROPOSED PLANTING AREA
- PROPOSED SHRUB PLANTING AREA
- PROPOSED REFORESTATION
- EXISTING VEGETATION TO PROTECT
- PROPOSED TREE
- OFF-SITE EXISTING TREES TO PROTECT
- OFF-SITE FUTURE TREE
- EXISTING TREE TO PROTECT
- PROPOSED SHRUBS
- OFF-SITE SHRUBS
- SPECIES (SEE PLANT LIST)
- QUANTITY
- TREE PROTECTION FENCE
- PEDESTRIAN FENCE
- SECURITY FENCE
- RETAINING WALL
- PEDESTRIAN SHELTER
- BENCH

TREE PROTECTION

The following protection measures must be implemented for retained trees, both on site and on adjacent sites, prior to any work activity, including tree removal. Tree protection fence shall remain in place and be maintained in good condition for the duration of site works.

- The location of the tree protection fencing must be determined by an arborist and detailed on any associated plans for the site (eg. tree conservation report, tree disclosure report, etc.).
- Under the guidance of a Landscape Architect or Certified Arborist, erect a fence at the critical root zone (CRZ) of trees. Diameter at breast height (DBH) is the trunk diameter measured at 1.3m height on the tree trunk. The CRZ is calculated as DBH x 10. Refer to the Tree Protection Fence detail.
- Refer to the Tree Protection Plan for fence location. Both the plan and the installed fence must be approved by City Forestry Staff prior to work commencement.
- Do not place any material or equipment within 2m of the CRZ of any tree, including outhouses.
- Do not attach any signs, notices or posters to any tree.
- Do not disturb, raise or lower the existing grade within the CRZ without approval.
- Only tunnel or bore when digging within the CRZ of a tree. Hand work only where required within the CRZ; absolutely no machinery permitted.
- Do not damage the root system, trunk, or branches, or any tree.
- Do not extend hard surface or significantly change landscaping.
- Ensure that exhaust fumes from all equipment are directed away from any tree canopy.
- When trees to be removed overlap with the CRZ of trees to be preserved, cut roots at the edge of the CRZ and grind down stumps after tree removals, do not pull out stumps. Ensure there is not root pulling or disturbance of the ground within the CRZ.
- If roots must be cut, the Landscape Architect and City Forestry Staff must be notified and consulted prior to work taking place. Roots 20mm or larger should be cut at right angles with clean, sharp horticultural tools without tearing, crushing, or pulling. Refer to City of Ottawa Specification S.P. F-8011 Tree Protection, Excavation of Root Zone.
- If there appears to be damaged or objectionable branches, the Landscape Architect must be consulted before any work is conducted. Do not prune leaders. Do not prune more than 1/4 of crown.
- If trees are being affected by site works, a water and fertilizing program will need to be set up to the satisfaction of the Landscape Architect.
- If the protected fenced area must be reduced to facilitate construction, mitigation measures must be prescribed by the Landscape Architect and approved by City Forestry Staff. These may include the placement of plywood, wood chips, or steel plating over the roots for protection.
- By-laws: All City-owned trees are protected under the Municipal Trees and Natural Areas Protection By-Law (2008-278). Within the urban area, privately-owned trees greater than 50cm diameter on lots 1ha in size or less, and trees greater than 10cm diameter on lots less than 1 ha are protected under the Urban Tree Conservation By-Law (2009-200).

PLANTING

- This drawing shall be read in conjunction with all relevant Architectural, Engineering, and related drawings and documents.
- Refer to Engineering Drawings for Grading. Provide drainage as indicated in grading plan. Round all tops and toes of slopes, smoothly. Compact all areas to 95% Standard Proctor Density unless otherwise noted.
- Refer to Architectural Drawings for site layout.
- Refer to Engineering Drawings for site servicing.
- Contractor must contact utility companies for locates prior to excavation or planting.
- It is essential to use the plans and details in conjunction with the specifications and notes.
- Existing trees to be retained shall be protected according to the contract detail and specifications.
- Plant material shall be No. 1 Grade and shall comply with Canadian Standards for Nursery Stock (latest edition) published by the Canadian Nursery Landscape Association.
- Use plant material with strong fibrous root system free of disease, defects or injuries, and structurally sound. Use trees with straight trunks, well and characteristically branched for species. Obtain approval from consultant of plant material at source prior to digging. All trees and shrubs shall be container grown, potted, W/B or B/B, as indicated on Plant List. Bare root planting will only be acceptable for certain species and as approved by the Landscape Architect.
- Plant material substitutions shall not be permitted without the written approval from the consultant, with 48 hours notice, prior to shipping plant material.
- Plant locations are schematic / approximate only. Contractor shall stake out locations on site for approval by the Landscape Architect prior to installation. The illustrated number of plants shown in the Planting Plan supersedes the estimated number in the Plant List. Contractor to report any discrepancies to the Landscape Architect prior to installation. Contractor will assume full responsibility if the Landscape Architect is not notified.
- Shrubs, Perennials, Vines, and Groundcovers shall be planted in a continuous planting bed of 450mm depth with approved topsoil covered with 75mm depth shredded bark mulch. For reforestation beds, refer to the detail on Sheet 120025-L-D1.
- Ensure trees are thoroughly watered following planting. Monitor material and ensure adequate moisture until acceptance.
- In heavy clay or poorly drained soils, set root ball with root collar 75-100mm higher than finished grade.
- Sod and/or seed areas to receive 100mm depth topsoil as specified. Sod shall be No. 1 Kentucky Bluegrass Sod grown from minimum mixture of 3 Kentucky Bluegrass cultivars. Quality and source shall comply with Canadian Standards for Nursery Stock, Section 17, (latest edition) published by the Canadian Nursery Landscape Association. Unless otherwise specified, turf is to be maintained by the contractor until a second cutting is accepted by the Landscape Architect.
- Apply the following mineral fertilizer unless soil tests show other requirements: Sodded areas - (8-32-16) 8% Nitrogen, 32% Phosphorus, 16% Potash at a rate of 350kg/ha. - Planting Beds - (8-32-16) - 8% Nitrogen, 32% Phosphorus, 16% Potash as per manufacturer specifications. Reinstatement all areas damaged or disturbed beyond the Limit of Work.

NOTE: THE POSITION OF ALL POLE LINES, CONDUITS, WATERMANS, SEWERS AND OTHER UNDERGROUND AND OVERGROUND UTILITIES AND STRUCTURES IS NOT NECESSARILY SHOWN ON THE CONTRACT DRAWINGS, AND WHERE SHOWN, THE ACCURACY OF THE POSITION OF SUCH UTILITIES AND STRUCTURES IS NOT GUARANTEED. BEFORE STARTING WORK, DETERMINE THE EXACT LOCATION OF ALL SUCH UTILITIES AND STRUCTURES AND ASSUME ALL LIABILITY FOR DAMAGE TO THEM.

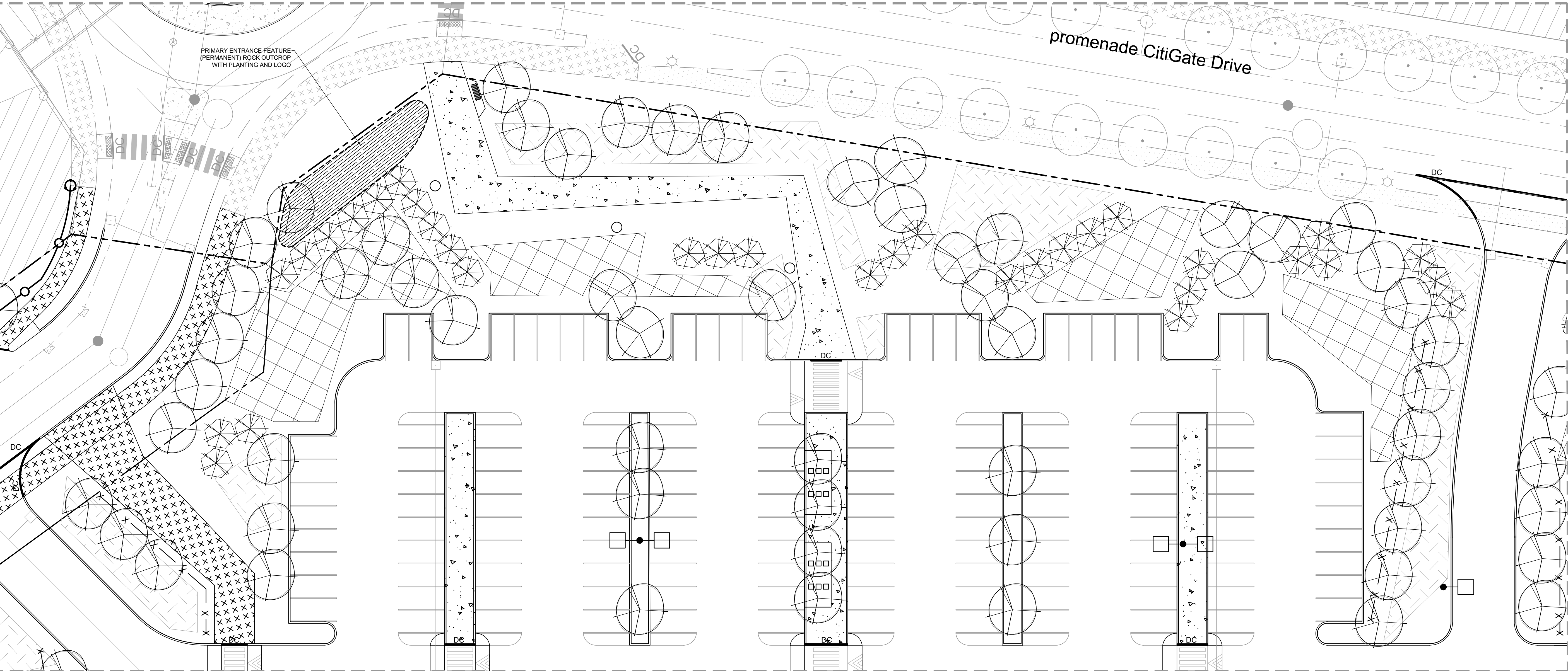
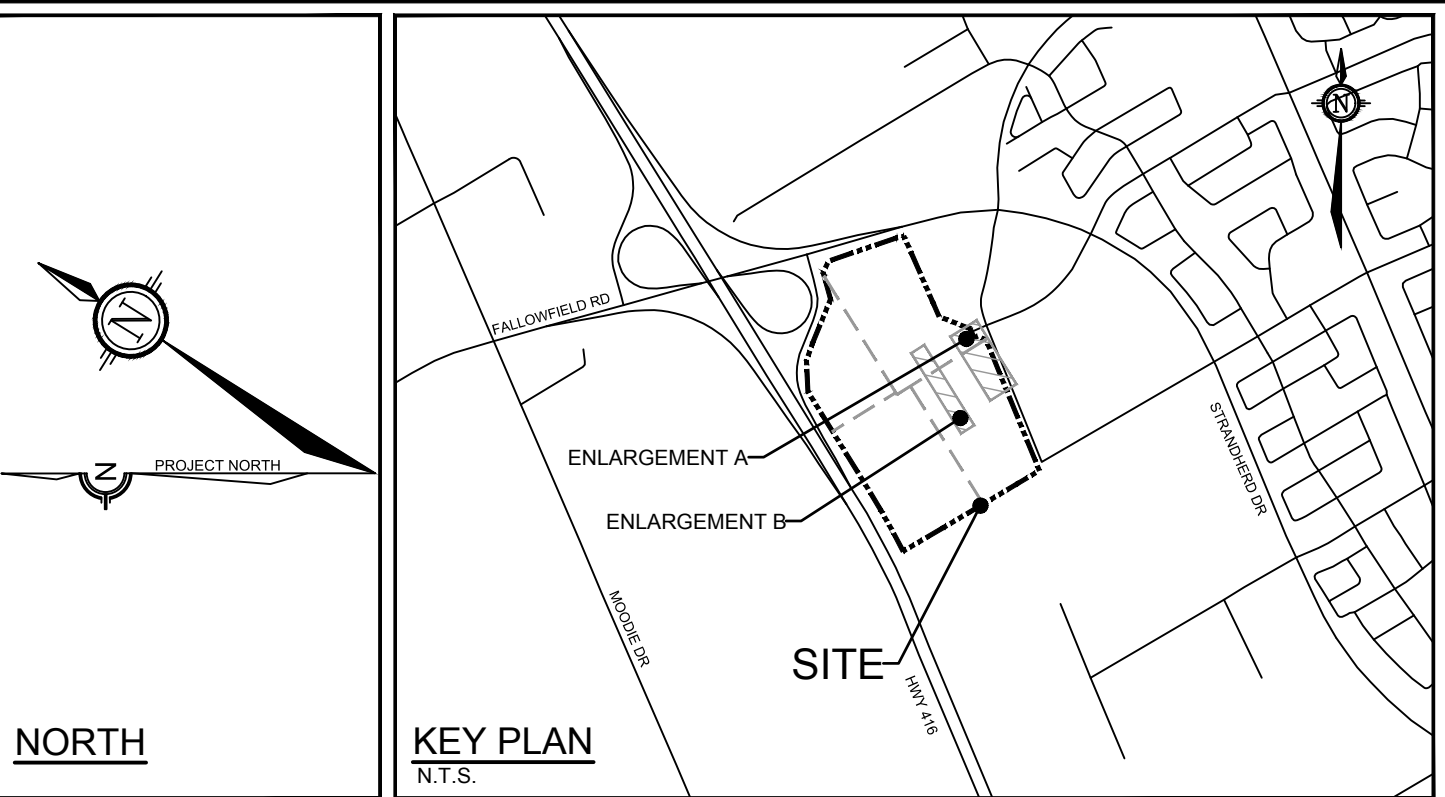
				SCALE		DESIGN		FOR REVIEW ONLY		LOCATION	
				1:500		KW/JP				PROJECT PYTHON	
						JP				222 CITIGATE DRIVE, CITY OF OTTAWA	
						KW				DRAWING NAME	
						JP				LANDSCAPE PLAN	
						RU				PROJECT NO.	
										120025-00	
										REV	
										REV # 1	
										DRAWING NO.	
										120025-L5	

ENLARGEMENT PLANT LISTS

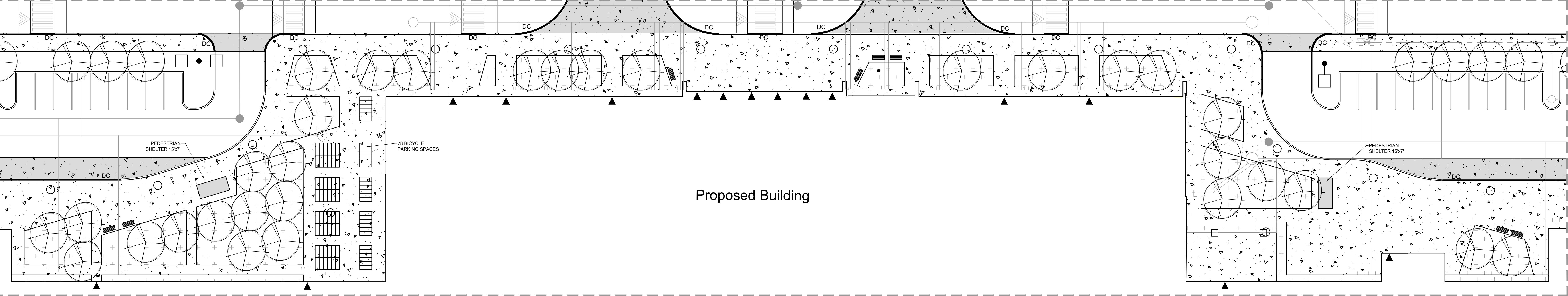
120025 - Block 13 - Plants Adjacent to Building - Plant List				
KEY QTY BOTANICAL NAME	COMMON NAME	SIZE	COND	SPACING
Deciduous Trees				
AFAF	Acer x freemanii 'Autumn Fantasy'	Autumn Fantasy Maple	50mm Cal	WB As Shown
GTK	Gleditsia triacanthos var. inermis 'Skycole'	Skyline Honeylocust	50mm Cal	WB As Shown
QAI	Quercus macrocarpa	Bur Oak	50mm Cal	WB As Shown
UAV	Ulmus americana 'Valley Forge'	Valley Forge Elm	50mm Cal	WB As Shown
Coniferous Shrubs				
JPC	Juniperus chinensis 'Pfitzeriana Compacta'	Compact Pfitzer Juniper	40cm Spr	PT 100cm O.C.
Pm	Pinus mugo 'Stewartii'	Stewartii Mugo Pine	40cm Spr	PT 100cm O.C.
Pmp	Pinus mugo var. 'Pumilio'	Mugho Pine	40cm Spr	PT 150cm O.C.
Tos	Thuja occidentalis 'Smaragd'	Emerald Cedar	150cm Ht	PT 100cm O.C.
Deciduous Shrubs				
Csa	Cornus sericea 'Farrow'	Arctic Fire Dogwood	45cm Ht	PT 90cm O.C.
HJK	Hypericum kalmianum	Kalm's St. John's Wort	45cm Ht	PT 60cm O.C.
PJ	Physocarpus opulifolius 'JEFAM'	Amber Jubilee Nivea	60cm Ht	PT 100cm O.C.
Rag	Pinus aristata 'Cone-Low'	Cone-Low Fragrant Spruce	45cm Ht	PT 100cm O.C.

120025 - Block 13 - Plants Adjacent to Building - Plant List				
KEY QTY BOTANICAL NAME	COMMON NAME	SIZE	COND	SPACING
Perennials				
apl	Aster novae-angliae 'Purple Dome'	Purple Dome New England Aster	1g	PT 45cm O.C.
hfb	Hosta 'Fragrant Blue'	Fragrant Blue Hosta	1g	PT 90cm O.C.
pls	Perovskia atriplicifolia 'Little Spire'	Dwarf Russian Sage	1g	PT 90cm O.C.
rg	Rudbeckia hirta 'Little Gold Star'	Little Gold Star Coneflower	1g	PT 45cm O.C.
smt	Salvia nemerosa 'May Night'	May Night Perennial Salvia	1g	PT 45cm O.C.
ssm	Sedum spectabile 'Matrona'	Matrona Showy Stonecrop Sedum	1g	PT 60cm O.C.
Vines				
Lds	Lonicera x brownii 'Dropmore Scarlet'	Dropmore Scarlett Honeysuckle	1g	PT 150cm O.C.
Ornamental Grasses				
pvi	Panicum virgatum 'Northwind'	Northwind Switch Grass	1g	PT 60cm O.C.
pvs	Panicum virgatum 'Shenandoah'	Shenandoah Switch Grass	1g	PT 80cm O.C.
sab	Sorghastrum nutans 'Sioux Blue'	Sioux Blue Indian Grass	1g	PT 80cm O.C.
sh	Sporobolus heterolepis	Prairie Dropseed	1g	PT 45cm O.C.

120025 - Block 13 - Entrance Features - Plant List				
KEY QTY BOTANICAL NAME	COMMON NAME	SIZE	COND	SPACING
Coniferous Shrubs				
Pmp	Pinus mugo var. 'Pumilio'	Mugho Pine	40cm Spr	PT 150cm O.C.
Deciduous Shrubs				
Rt	Rhus typhina	Staghorn Sumac	45cm Ht	PT 175cm O.C.
Ornamental Grasses				
pvi	Panicum virgatum 'Northwind'	Northwind Switch Grass	1g	PT 60cm O.C.
pvs	Panicum virgatum 'Shenandoah'	Shenandoah Switch Grass	1g	PT 80cm O.C.
sab	Sorghastrum nutans 'Sioux Blue'	Sioux Blue Indian Grass	1g	PT 80cm O.C.
sh	Sporobolus heterolepis	Prairie Dropseed	1g	PT 45cm O.C.



ENLARGEMENT - A



ENLARGEMENT - B

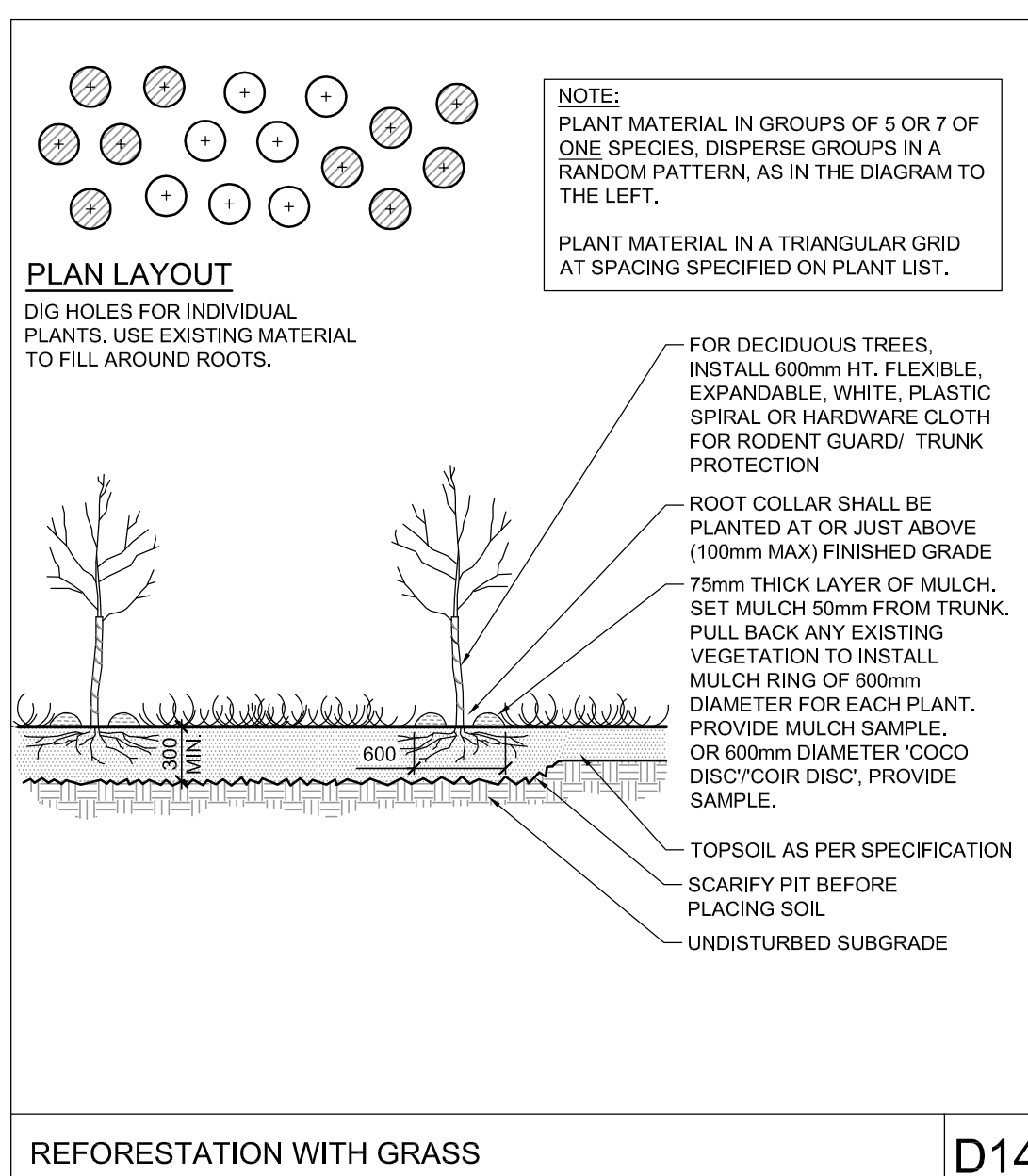
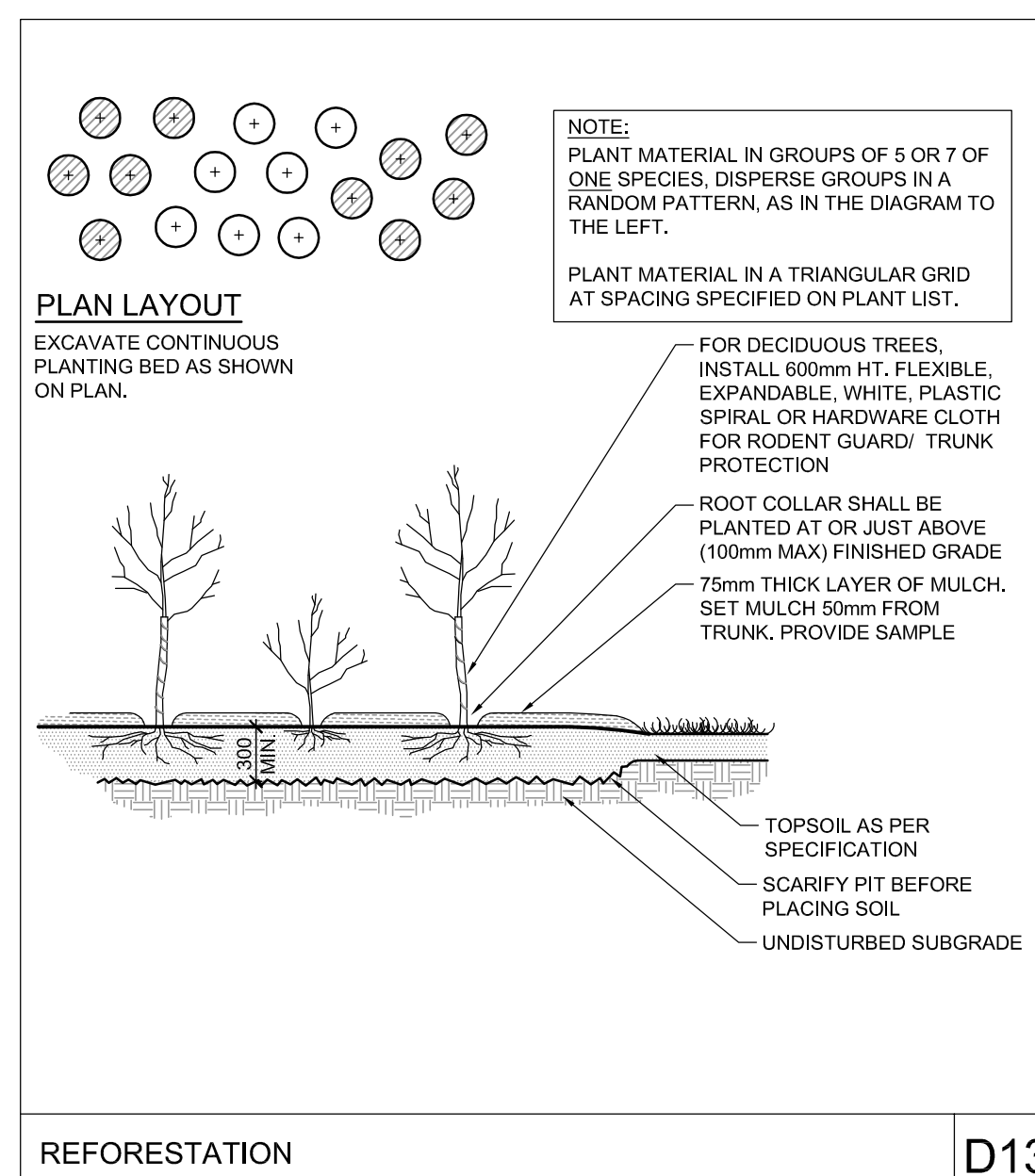
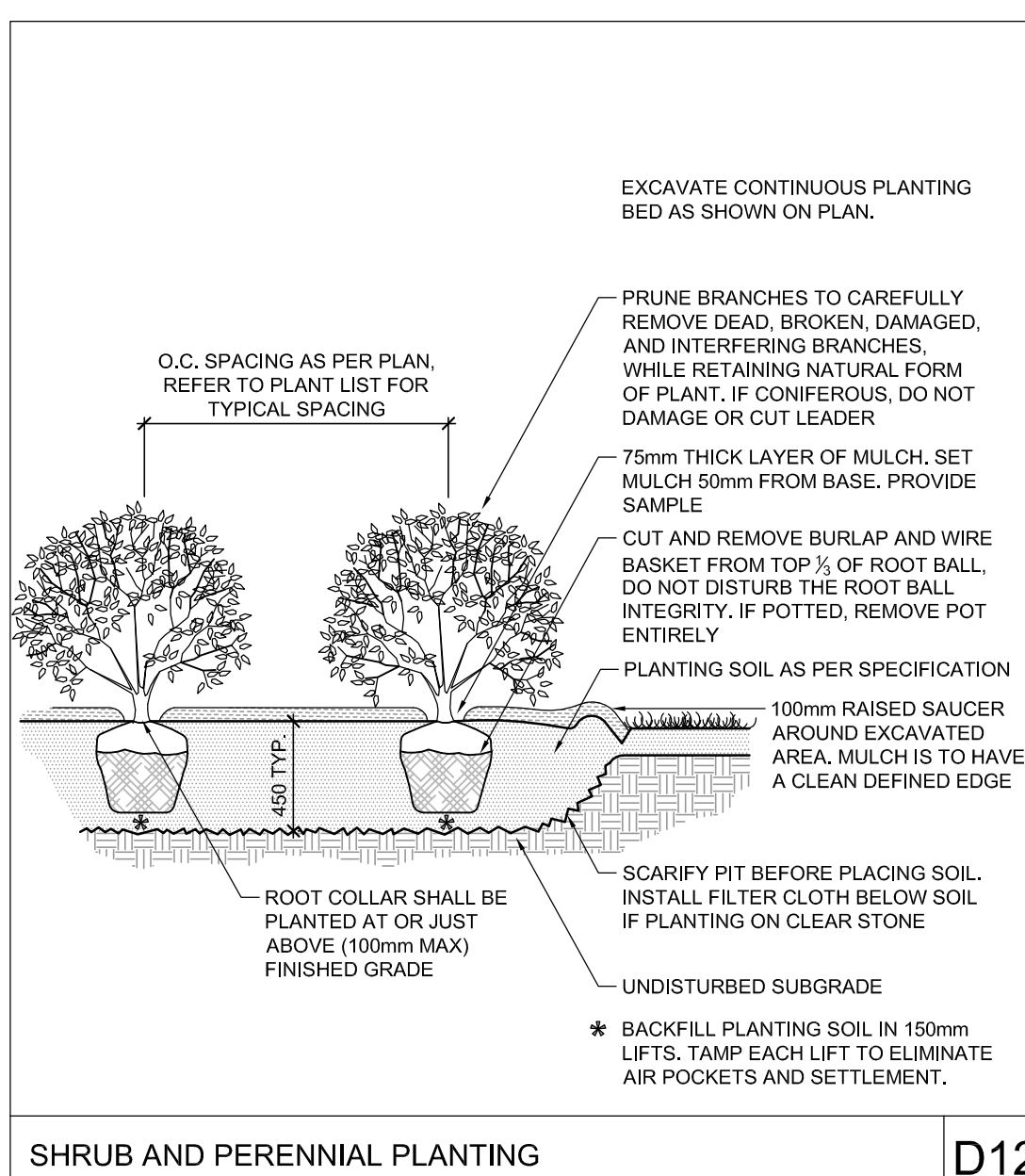
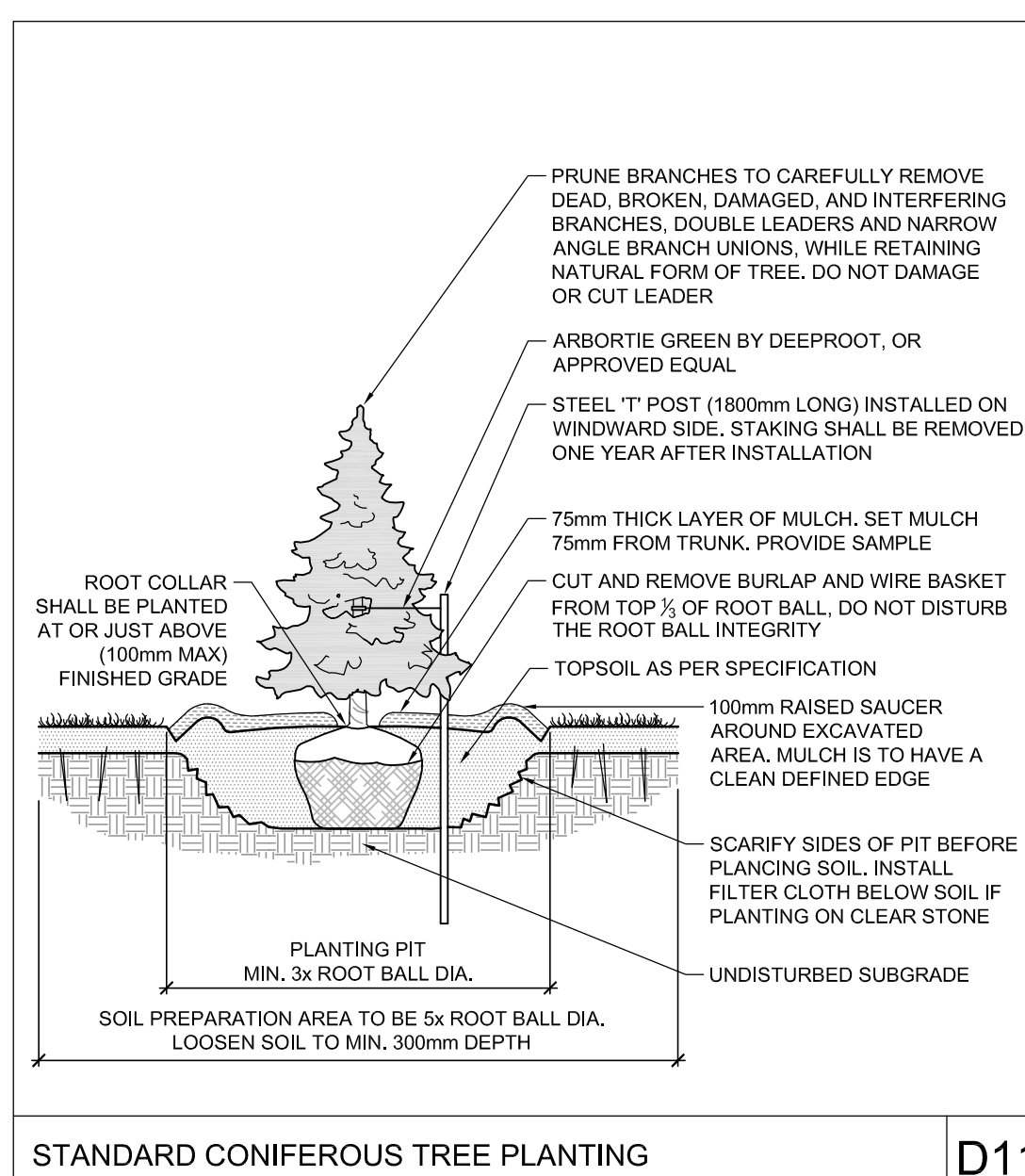
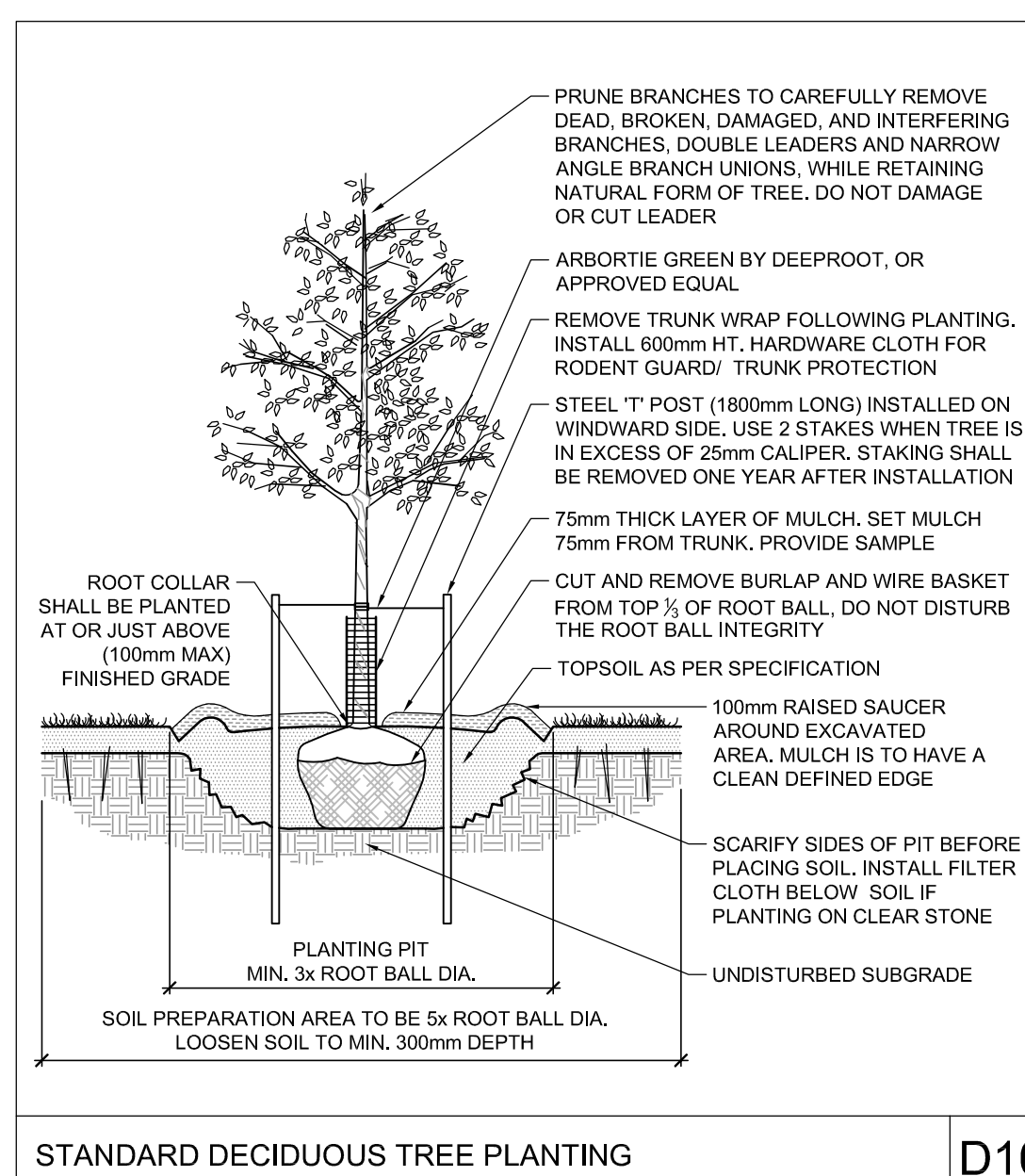
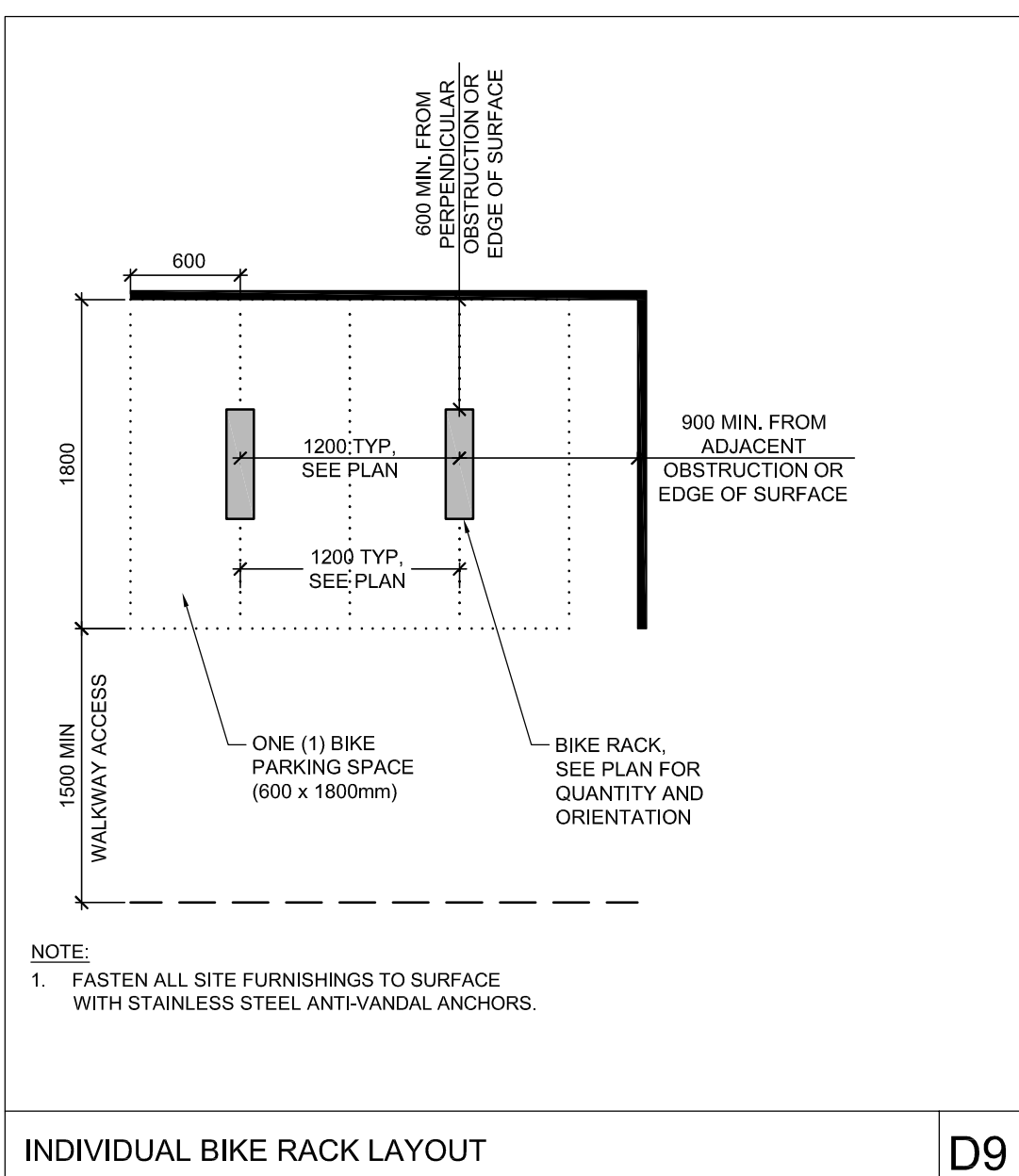
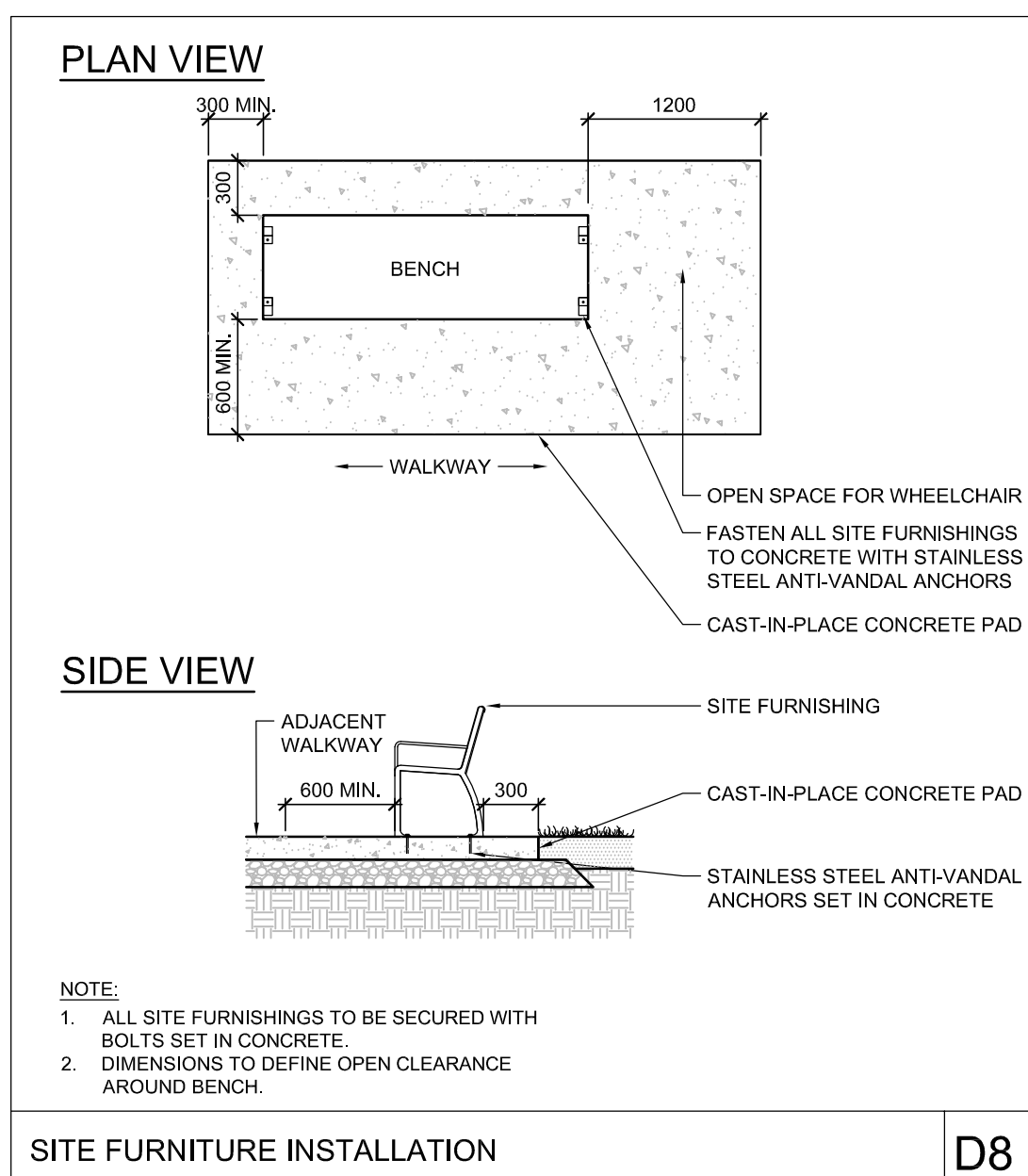
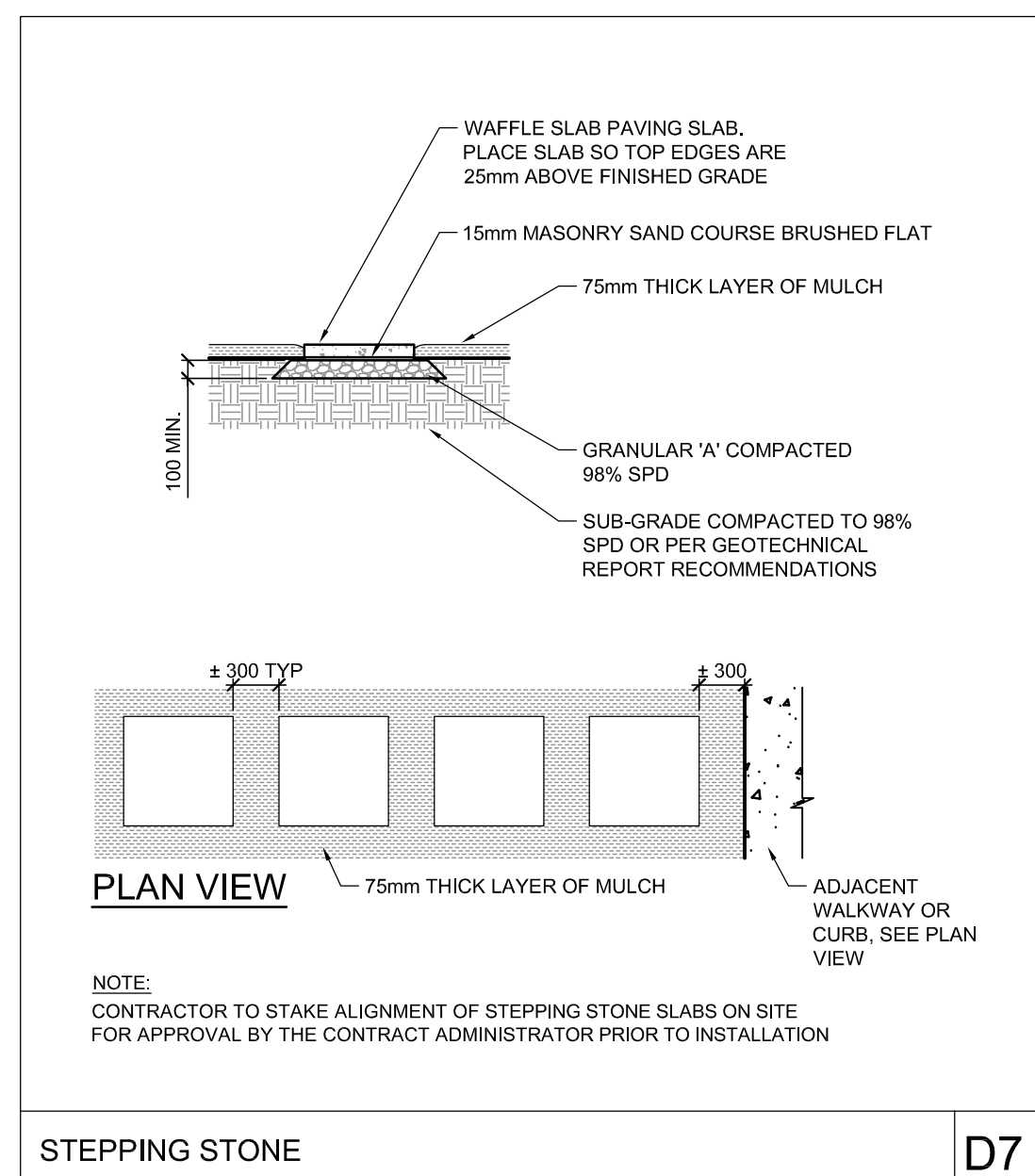
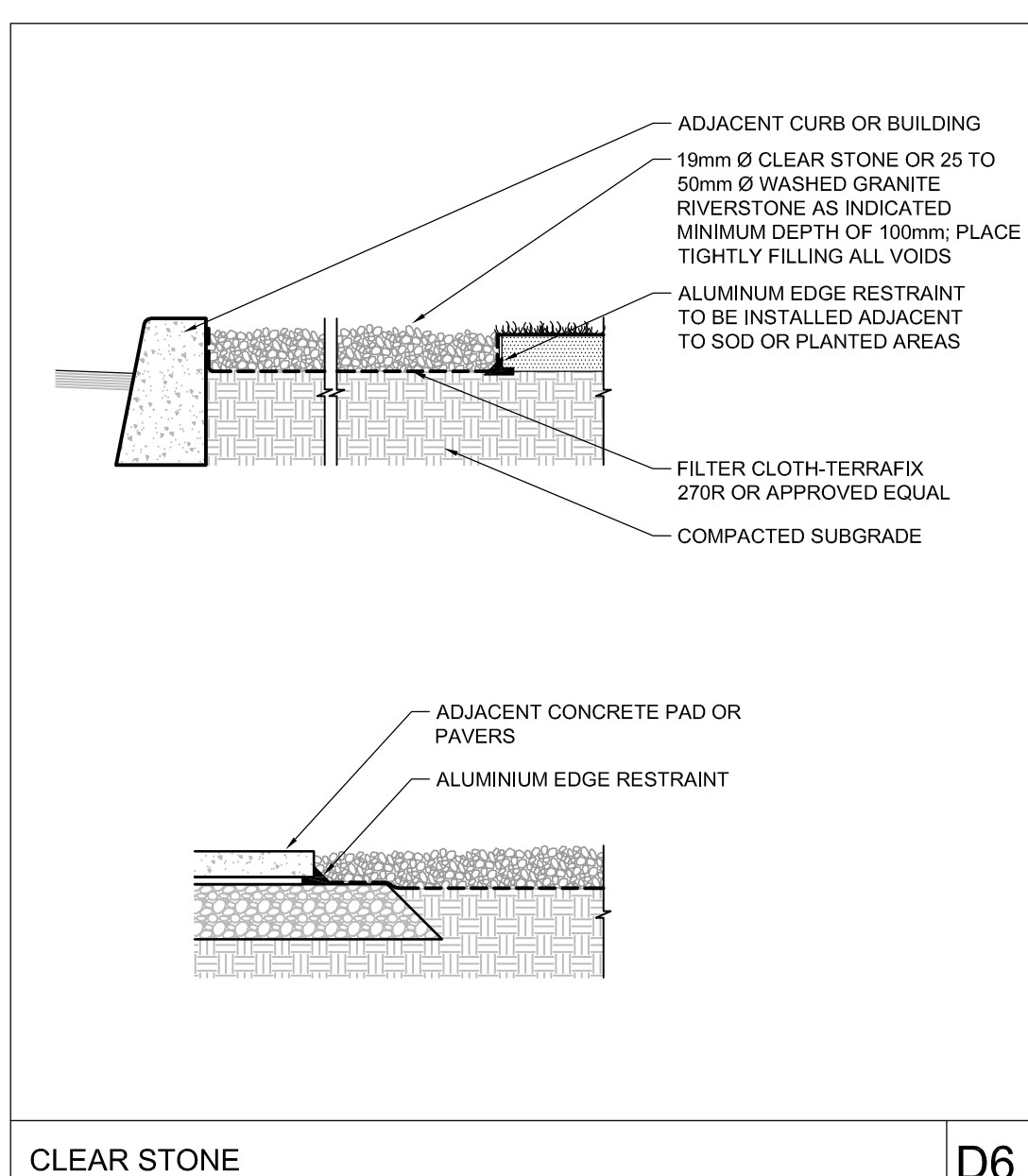
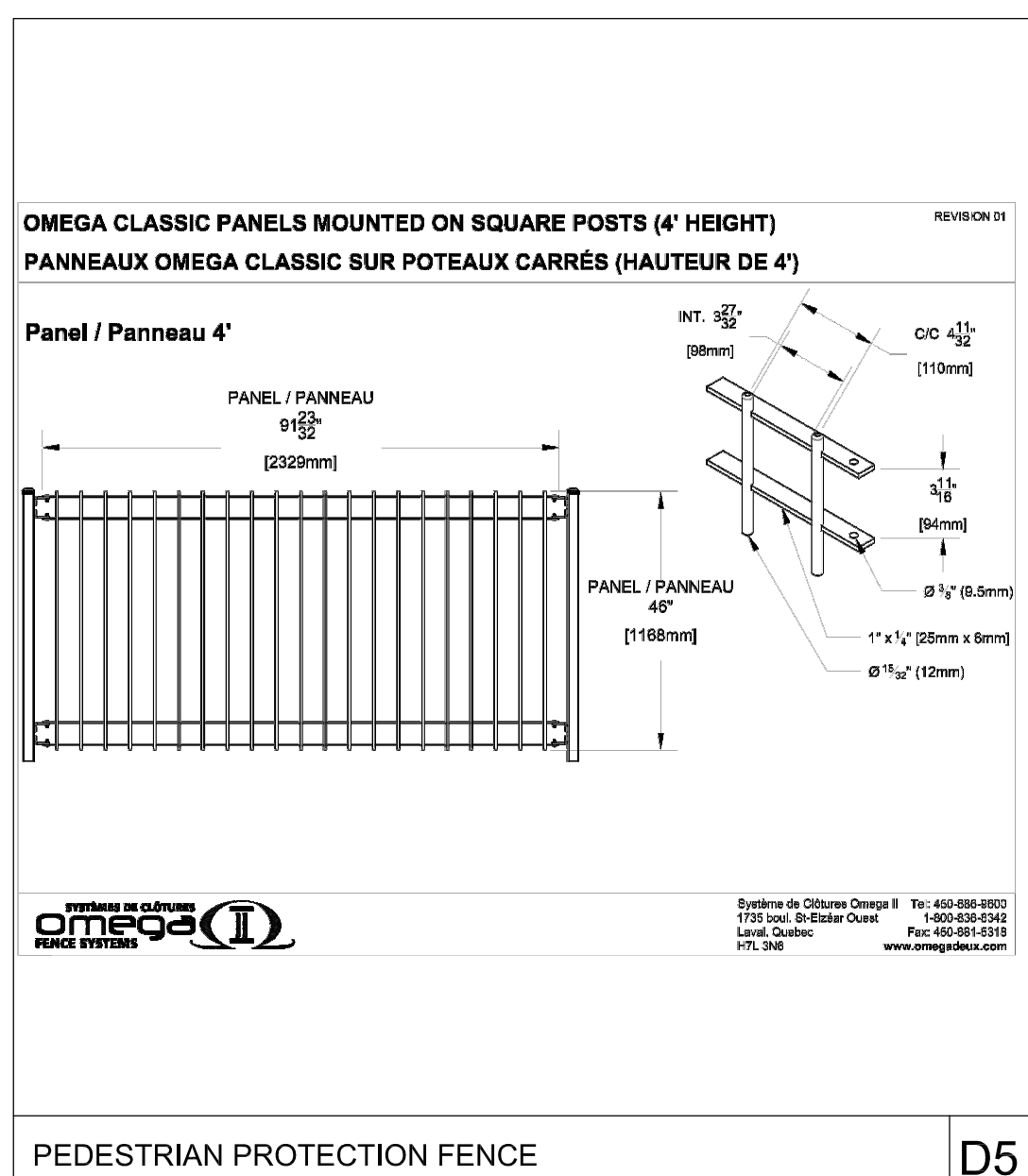
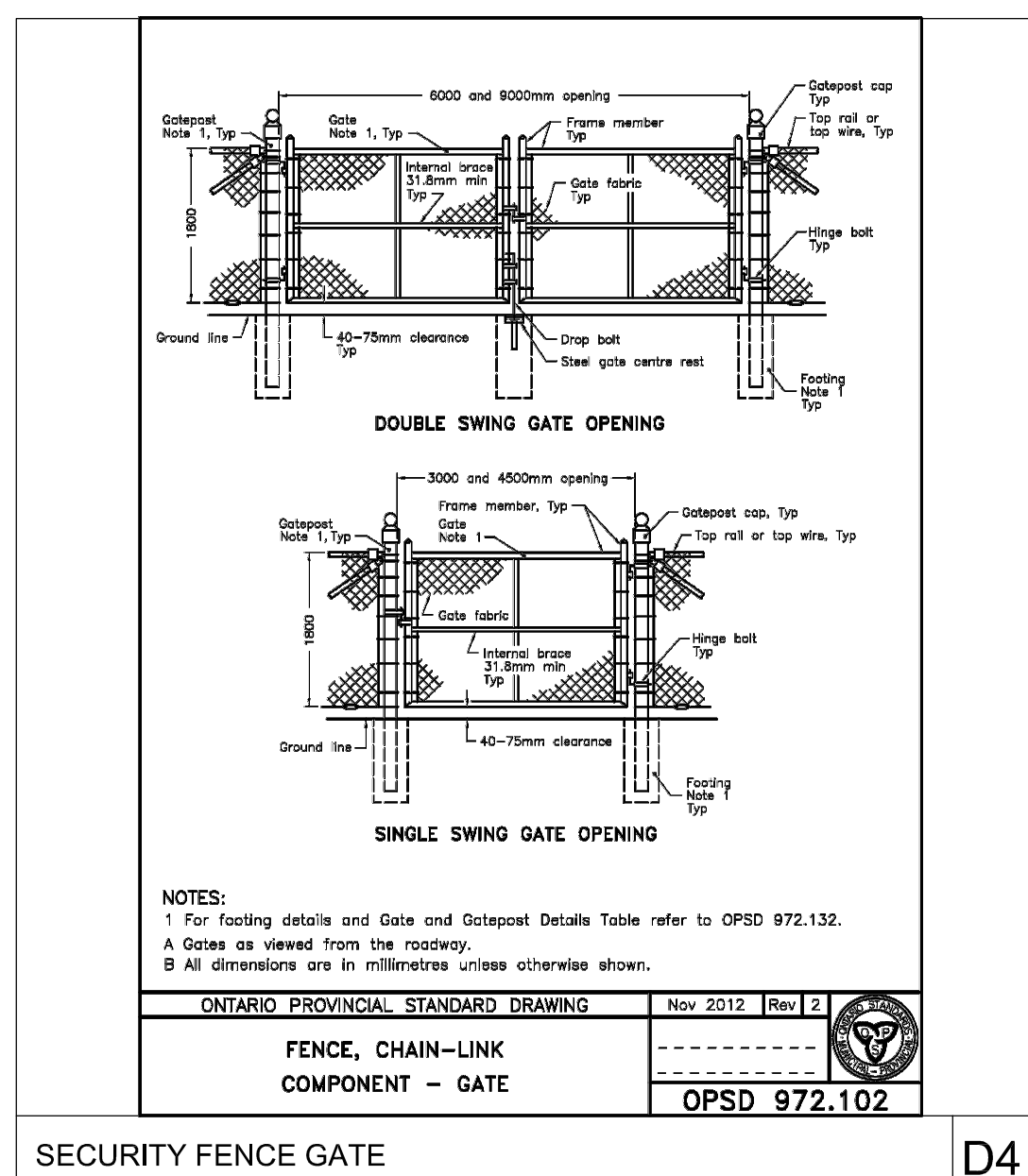
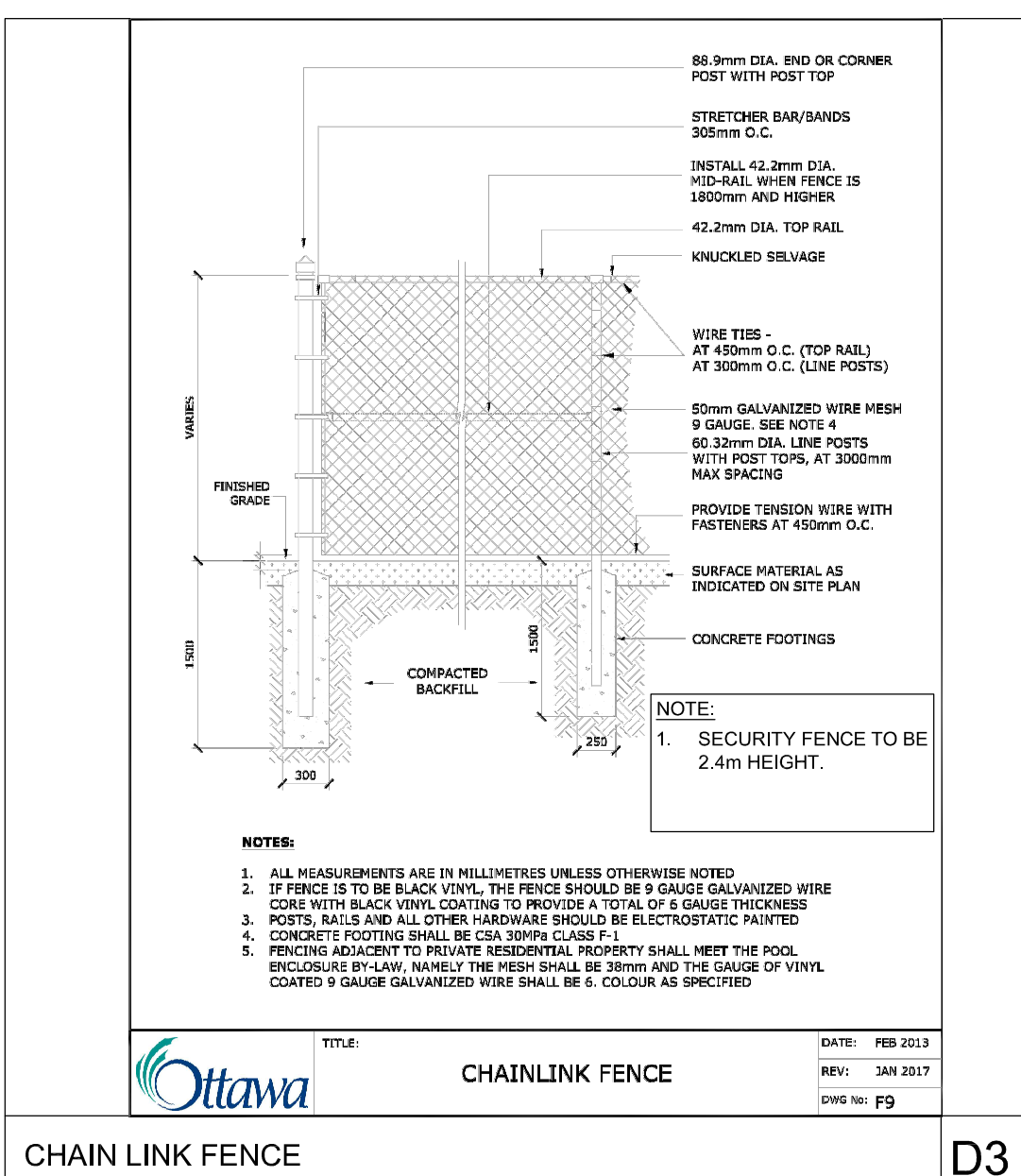
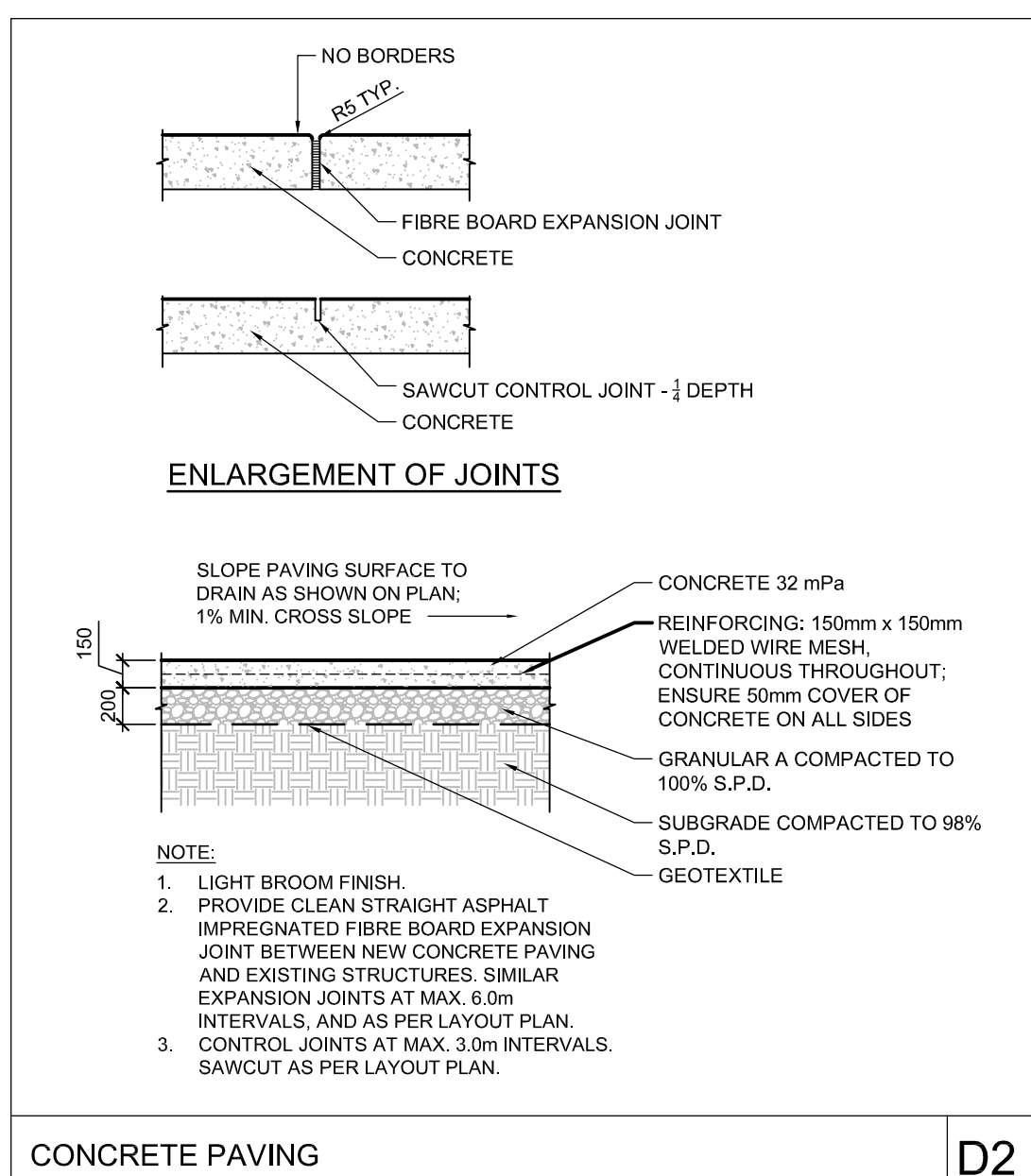
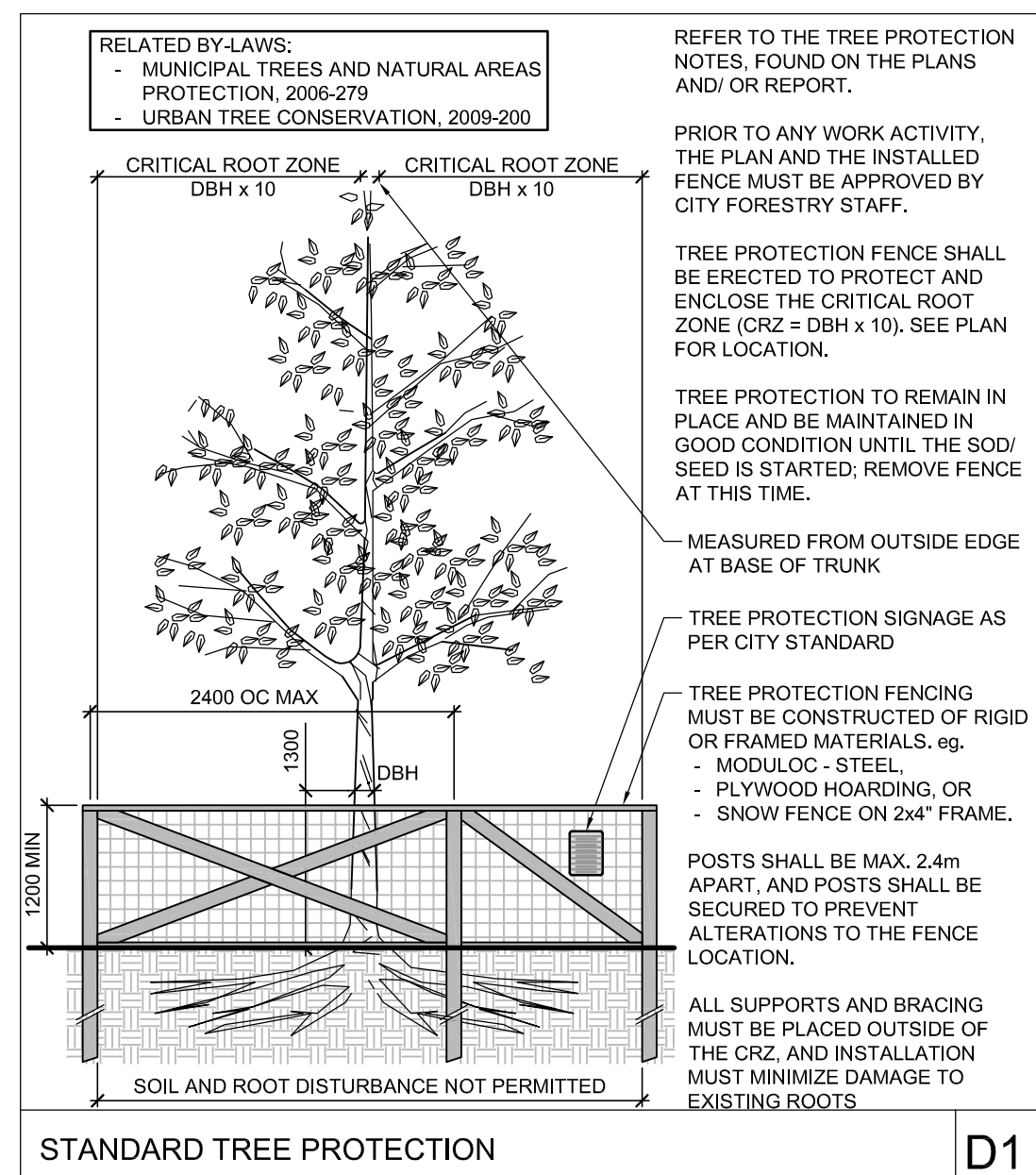
NOTE:
THE POSITION OF ALL POLE LINES, CONDUITS,
WATERMANS, SEWERS AND OTHER
UNDERGROUND AND OVERGROUND UTILITIES AND
STRUCTURES IS NOT NECESSARILY SHOWN ON
THE CONTRACT DRAWINGS, AND WHERE SHOWN,
THE ACCURACY OF THE POSITION OF SUCH
UTILITIES AND STRUCTURES IS NOT GUARANTEED.
BEFORE STARTING WORK, DETERMINE THE EXACT
LOCATION OF ALL SUCH UTILITIES AND
STRUCTURES AND ASSUME ALL LIABILITY FOR
DAMAGE TO THEM.

SCALE			
1:250			
1:250 0 2 4 6 8 10			
DESIGN CHECKED DRAWN CHECKED APPROVED			
1. APPLICATION FOR SITE PLAN APPROVAL APR 9/20 JP			
No.	REVISION	DATE	BY

FOR REVIEW ONLY	
KW/JP	JP
KW	JP
RU	



LOCATION PROJECT PYTHON 222 CITIGATE DRIVE, CITY OF OTTAWA	
DRAWING NAME LANDSCAPE PLAN	
PROJECT No.	120025-00
REV	REV # 1
DRAWING No.	120025-L6



NOTE:
THE POSITION OF ALL POLE LINES, CONDUITS,
WATERMANS, SEWERS AND OTHER
UNDERGROUND AND OVERGROUND UTILITIES AND
STRUCTURES IS NOT NECESSARILY SHOWN ON
THE CONTRACT DRAWINGS, AND WHERE SHOWN,
THE ACCURACY OF THE POSITION OF SUCH
UTILITIES AND STRUCTURES IS NOT GUARANTEED.
BEFORE STARTING WORK, DETERMINE THE EXACT
LOCATION OF ALL SUCH UTILITIES AND
STRUCTURES AND ASSUME ALL LIABILITY FOR
DAMAGE TO THEM.

NOTE:
THE POSITION OF ALL POLE LINES, CONDUITS,
WATERMANS, SEWERS AND OTHER
UNDERGROUND AND OVERGROUND UTILITIES AND
STRUCTURES IS NOT NECESSARILY SHOWN ON
THE CONTRACT DRAWINGS, AND WHERE SHOWN,
THE ACCURACY OF THE POSITION OF SUCH
UTILITIES AND STRUCTURES IS NOT GUARANTEED.
BEFORE STARTING WORK, DETERMINE THE EXACT
LOCATION OF ALL SUCH UTILITIES AND
STRUCTURES AND ASSUME ALL LIABILITY FOR
DAMAGE TO THEM.

NOTE:
THE POSITION OF ALL POLE LINES, CONDUITS,
WATERMANS, SEWERS AND OTHER
UNDERGROUND AND OVERGROUND UTILITIES AND
STRUCTURES IS NOT NECESSARILY SHOWN ON
THE CONTRACT DRAWINGS, AND WHERE SHOWN,
THE ACCURACY OF THE POSITION OF SUCH
UTILITIES AND STRUCTURES IS NOT GUARANTEED.
BEFORE STARTING WORK, DETERMINE THE EXACT
LOCATION OF ALL SUCH UTILITIES AND
STRUCTURES AND ASSUME ALL LIABILITY FOR
DAMAGE TO THEM.

NOTE:
THE POSITION OF ALL POLE LINES, CONDUITS,
WATERMANS, SEWERS AND OTHER
UNDERGROUND AND OVERGROUND UTILITIES AND
STRUCTURES IS NOT NECESSARILY SHOWN ON
THE CONTRACT DRAWINGS, AND WHERE SHOWN,
THE ACCURACY OF THE POSITION OF SUCH
UTILITIES AND STRUCTURES IS NOT GUARANTEED.
BEFORE STARTING WORK, DETERMINE THE EXACT
LOCATION OF ALL SUCH UTILITIES AND
STRUCTURES AND ASSUME ALL LIABILITY FOR
DAMAGE TO THEM.

NOTE:
THE POSITION OF ALL POLE LINES, CONDUITS,
WATERMANS, SEWERS AND OTHER
UNDERGROUND AND OVERGROUND UTILITIES AND
STRUCTURES IS NOT NECESSARILY SHOWN ON
THE CONTRACT DRAWINGS, AND WHERE SHOWN,
THE ACCURACY OF THE POSITION OF SUCH
UTILITIES AND STRUCTURES IS NOT GUARANTEED.
BEFORE STARTING WORK, DETERMINE THE EXACT
LOCATION OF ALL SUCH UTILITIES AND
STRUCTURES AND ASSUME ALL LIABILITY FOR
DAMAGE TO THEM.

NOTE:
THE POSITION OF ALL POLE LINES, CONDUITS,
WATERMANS, SEWERS AND OTHER
UNDERGROUND AND OVERGROUND UTILITIES AND
STRUCTURES IS NOT NECESSARILY SHOWN ON
THE CONTRACT DRAWINGS, AND WHERE SHOWN,
THE ACCURACY OF THE POSITION OF SUCH
UTILITIES AND STRUCTURES IS NOT GUARANTEED.
BEFORE STARTING WORK, DETERMINE THE EXACT
LOCATION OF ALL SUCH UTILITIES AND
STRUCTURES AND ASSUME ALL LIABILITY FOR
DAMAGE TO THEM.

NOTE:
THE POSITION OF ALL POLE LINES, CONDUITS,
WATERMANS, SEWERS AND OTHER
UNDERGROUND AND OVERGROUND UTILITIES AND
STRUCTURES IS NOT NECESSARILY SHOWN ON
THE CONTRACT DRAWINGS, AND WHERE SHOWN,
THE ACCURACY OF THE POSITION OF SUCH
UTILITIES AND STRUCTURES IS NOT GUARANTEED.
BEFORE STARTING WORK, DETERMINE THE EXACT
LOCATION OF ALL SUCH UTILITIES AND
STRUCTURES AND ASSUME ALL LIABILITY FOR
DAMAGE TO THEM.

NOTE:
THE POSITION OF ALL POLE LINES, CONDUITS,
WATERMANS, SEWERS AND OTHER
UNDERGROUND AND OVERGROUND UTILITIES AND
STRUCTURES IS NOT NECESSARILY SHOWN ON
THE CONTRACT DRAWINGS, AND WHERE SHOWN,
THE ACCURACY OF THE POSITION OF SUCH
UTILITIES AND STRUCTURES IS NOT GUARANTEED.
BEFORE STARTING WORK, DETERMINE THE EXACT
LOCATION OF ALL SUCH UTILITIES AND
STRUCTURES AND ASSUME ALL LIABILITY FOR
DAMAGE TO THEM.

NOTE:
THE POSITION OF ALL POLE LINES, CONDUITS,
WATERMANS, SEWERS AND OTHER
UNDERGROUND AND OVERGROUND UTILITIES AND
STRUCTURES IS NOT NECESSARILY SHOWN ON
THE CONTRACT DRAWINGS, AND WHERE SHOWN,
THE ACCURACY OF THE POSITION OF SUCH
UTILITIES AND STRUCTURES IS NOT GUARANTEED.
BEFORE STARTING WORK, DETERMINE THE EXACT
LOCATION OF ALL SUCH UTILITIES AND
STRUCTURES AND ASSUME ALL LIABILITY FOR
DAMAGE TO THEM.

NOTE:
THE POSITION OF ALL POLE LINES, CONDUITS,
WATERMANS, SEWERS AND OTHER
UNDERGROUND AND OVERGROUND UTILITIES AND
STRUCTURES IS NOT NECESSARILY SHOWN ON
THE CONTRACT DRAWINGS, AND WHERE SHOWN,
THE ACCURACY OF THE POSITION OF SUCH
UTILITIES AND STRUCTURES IS NOT GUARANTEED.
BEFORE STARTING WORK, DETERMINE THE EXACT
LOCATION OF ALL SUCH UTILITIES AND
STRUCTURES AND ASSUME ALL LIABILITY FOR
DAMAGE TO THEM.

NOTE:
THE POSITION OF ALL POLE LINES, CONDUITS,
WATERMANS, SEWERS AND OTHER
UNDERGROUND AND OVERGROUND UTILITIES AND
STRUCTURES IS NOT NECESSARILY SHOWN ON
THE CONTRACT DRAWINGS, AND WHERE SHOWN,
THE ACCURACY OF THE POSITION OF SUCH
UTILITIES AND STRUCTURES IS NOT GUARANTEED.
BEFORE STARTING WORK, DETERMINE THE EXACT
LOCATION OF ALL SUCH UTILITIES AND
STRUCTURES AND ASSUME ALL LIABILITY FOR
DAMAGE TO THEM.

NOTE:
THE POSITION OF ALL POLE LINES, CONDUITS,
WATERMANS, SEWERS AND OTHER
UNDERGROUND AND OVERGROUND UTILITIES AND
STRUCTURES IS NOT NECESSARILY SHOWN ON
THE CONTRACT DRAWINGS, AND WHERE SHOWN,
THE ACCURACY OF THE POSITION OF SUCH
UTILITIES AND STRUCTURES IS NOT GUARANTEED.
BEFORE STARTING WORK, DETERMINE THE EXACT
LOCATION OF ALL SUCH UTILITIES AND
STRUCTURES AND ASSUME ALL LIABILITY FOR
DAMAGE TO THEM.

NOTE:
THE POSITION OF ALL POLE LINES, CONDUITS,
WATERMANS, SEWERS AND OTHER
UNDERGROUND AND OVERGROUND UTILITIES AND
STRUCTURES IS NOT NECESSARILY SHOWN ON
THE CONTRACT DRAWINGS, AND WHERE SHOWN,
THE ACCURACY OF THE POSITION OF SUCH
UTILITIES AND STRUCTURES IS NOT GUARANTEED.
BEFORE STARTING WORK, DETERMINE THE EXACT
LOCATION OF ALL SUCH UTILITIES AND
STRUCTURES AND ASSUME ALL LIABILITY FOR
DAMAGE TO THEM.

NOTE:
THE POSITION OF ALL POLE LINES, CONDUITS,
WATERMANS, SEWERS AND OTHER
UNDERGROUND AND OVERGROUND UTILITIES AND
STRUCTURES IS NOT NECESSARILY SHOWN ON
THE CONTRACT DRAWINGS, AND WHERE SHOWN,
THE ACCURACY OF THE POSITION OF SUCH
UTILITIES AND STRUCTURES IS NOT GUARANTEED.
BEFORE STARTING WORK, DETERMINE THE EXACT
LOCATION OF ALL SUCH UTILITIES AND
STRUCTURES AND ASSUME ALL LIABILITY FOR
DAMAGE TO THEM.

NOTE:
THE POSITION OF ALL POLE LINES, CONDUITS,
WATERMANS, SEWERS AND OTHER
UNDERGROUND AND OVERGROUND UTILITIES AND
STRUCTURES IS NOT NECESSARILY SHOWN ON
THE CONTRACT DRAWINGS, AND WHERE SHOWN,
THE ACCURACY OF THE POSITION OF SUCH
UTILITIES AND STRUCTURES IS NOT GUARANTEED.
BEFORE STARTING WORK, DETERMINE THE EXACT
LOCATION OF ALL SUCH UTILITIES AND
STRUCTURES AND ASSUME ALL LIABILITY FOR
DAMAGE TO THEM.

NOTE:
THE POSITION OF ALL POLE LINES, CONDUITS,
WATERMANS, SEWERS AND OTHER
UNDERGROUND AND OVERGROUND UTILITIES AND
STRUCTURES IS NOT NECESSARILY SHOWN ON
THE CONTRACT DRAWINGS, AND WHERE SHOWN,
THE ACCURACY OF THE POSITION OF SUCH
UTILITIES AND STRUCTURES IS NOT GUARANTEED.
BEFORE STARTING WORK, DETERMINE THE EXACT
LOCATION OF ALL SUCH UTILITIES AND
STRUCTURES AND ASSUME ALL LIABILITY FOR
DAMAGE TO THEM.

NOTE:
THE POSITION OF ALL POLE LINES, CONDUITS,
WATERMANS, SEWERS AND OTHER
UNDERGROUND AND OVERGROUND UTILITIES AND
STRUCTURES IS NOT NECESSARILY SHOWN ON
THE CONTRACT DRAWINGS, AND WHERE SHOWN,
THE ACCURACY OF THE POSITION OF SUCH
UTILITIES AND STRUCTURES IS NOT GUARANTEED.
BEFORE STARTING WORK, DETERMINE THE EXACT
LOCATION OF ALL SUCH UTILITIES AND
STRUCTURES AND ASSUME ALL LIABILITY FOR
DAMAGE TO THEM.

NOTE:
THE POSITION OF ALL POLE LINES, CONDUITS,
WATERMANS, SEWERS AND OTHER
UNDERGROUND AND OVERGROUND UTILITIES AND
STRUCTURES IS NOT NECESSARILY SHOWN ON
THE CONTRACT DRAWINGS, AND WHERE SHOWN,
THE ACCURACY OF THE POSITION OF SUCH
UTILITIES AND STRUCTURES IS NOT GUARANTEED.
BEFORE STARTING WORK, DETERMINE THE EXACT
LOCATION OF ALL SUCH UTILITIES AND
STRUCTURES AND ASSUME ALL LIABILITY FOR
DAMAGE TO THEM.

NOTE:
THE POSITION OF ALL POLE LINES, CONDUITS,
WATERMANS, SEWERS AND OTHER
UNDERGROUND AND OVERGROUND UTILITIES AND
STRUCTURES IS NOT NECESSARILY SHOWN ON
THE CONTRACT DRAWINGS, AND WHERE SHOWN,
THE ACCURACY OF THE POSITION OF SUCH
UTILITIES AND STRUCTURES IS NOT GUARANTEED.
BEFORE STARTING WORK, DETERMINE THE EXACT
LOCATION OF ALL SUCH UTILITIES AND
STRUCTURES AND ASSUME ALL LIABILITY FOR
DAMAGE TO THEM.

NOTE:
THE POSITION OF ALL POLE LINES, CONDUITS,
WATERMANS, SEWERS AND OTHER
UNDERGROUND AND OVERGROUND UTILITIES AND
STRUCTURES IS NOT NECESSARILY SHOWN ON
THE CONTRACT DRAWINGS, AND WHERE SHOWN,
THE ACCURACY OF THE POSITION OF SUCH
UTILITIES AND STRUCTURES IS NOT GUARANTEED.
BEFORE STARTING WORK, DETERMINE THE EXACT
LOCATION OF ALL SUCH UTILITIES AND
STRUCTURES AND ASSUME ALL LIABILITY FOR
DAMAGE TO THEM.

NOTE:
THE POSITION OF ALL POLE LINES, CONDUITS,
WATERMANS, SEWERS AND OTHER
UNDERGROUND AND OVERGROUND UTILITIES AND
STRUCTURES IS NOT NECESSARILY SHOWN ON
THE CONTRACT DRAWINGS, AND WHERE SHOWN,
THE ACCURACY OF THE POSITION OF SUCH
UTILITIES AND STRUCTURES IS NOT GUARANTEED.
BEFORE STARTING WORK, DETERMINE THE EXACT
LOCATION OF ALL SUCH UTILITIES AND
STRUCTURES AND ASSUME ALL LIABILITY FOR
DAMAGE TO THEM.

NOTE:
THE POSITION OF ALL POLE LINES, CONDUITS,
WATERMANS, SEWERS AND OTHER
UNDERGROUND AND OVERGROUND UTILITIES AND
STRUCTURES IS NOT NECESSARILY SHOWN ON
THE CONTRACT DRAWINGS, AND WHERE SHOWN,
THE ACCURACY OF THE POSITION OF SUCH
UTILITIES AND STRUCTURES IS NOT GUARANTEED.
BEFORE STARTING WORK, DETERMINE THE EXACT
LOCATION OF ALL SUCH UTILITIES AND
STRUCTURES AND ASSUME ALL LIABILITY FOR
DAMAGE TO THEM.