

GENERAL NOTES:

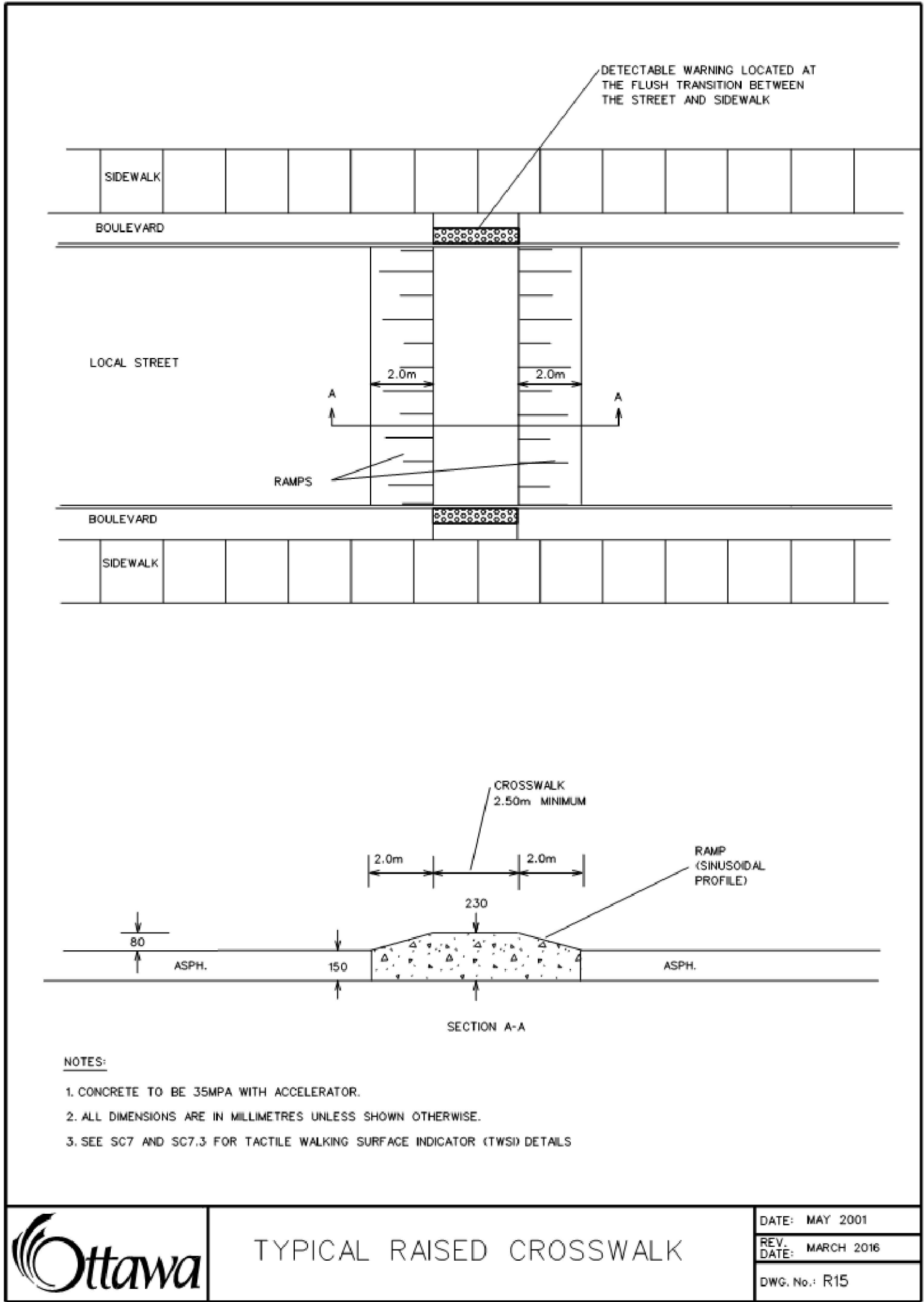
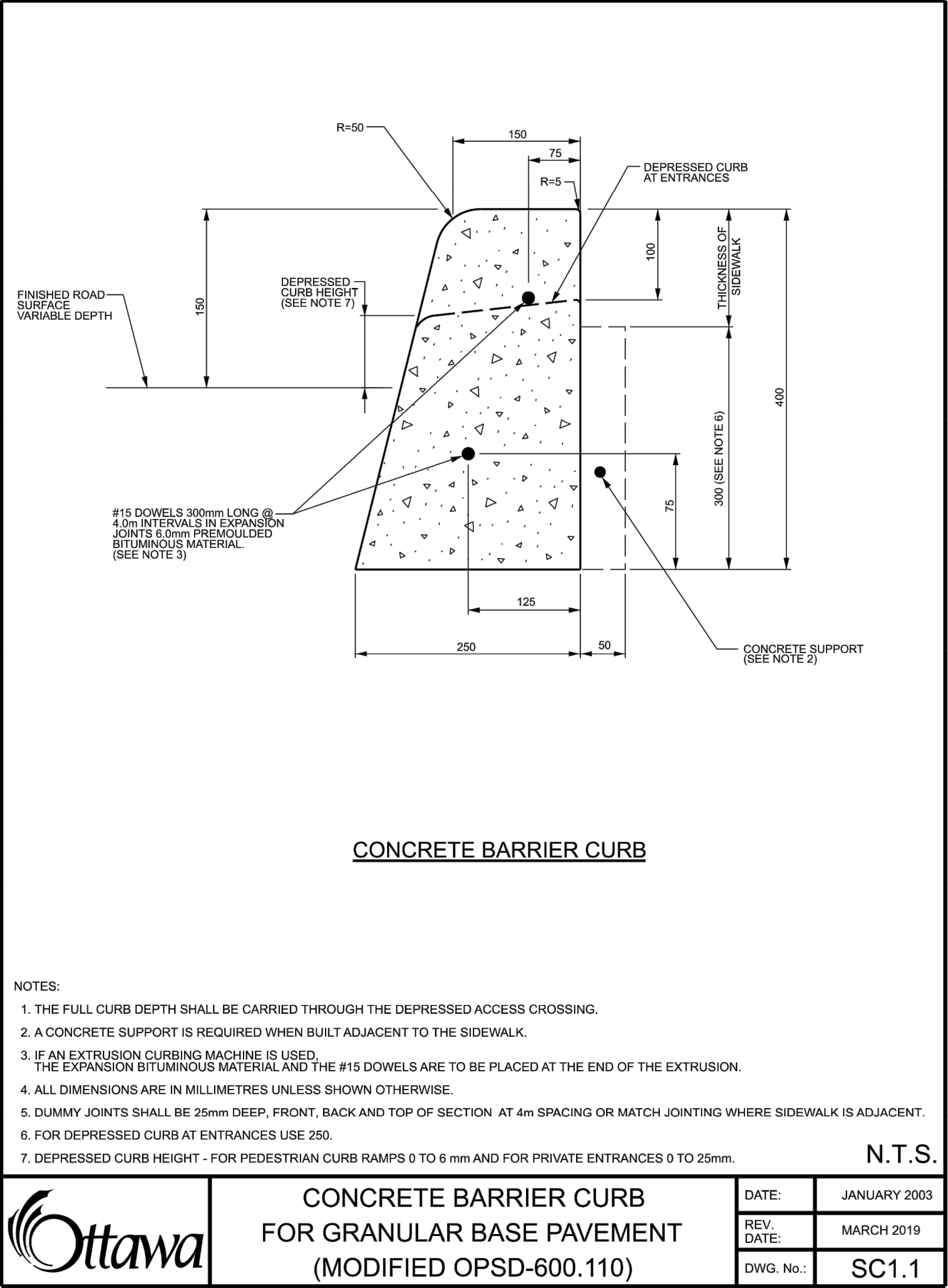
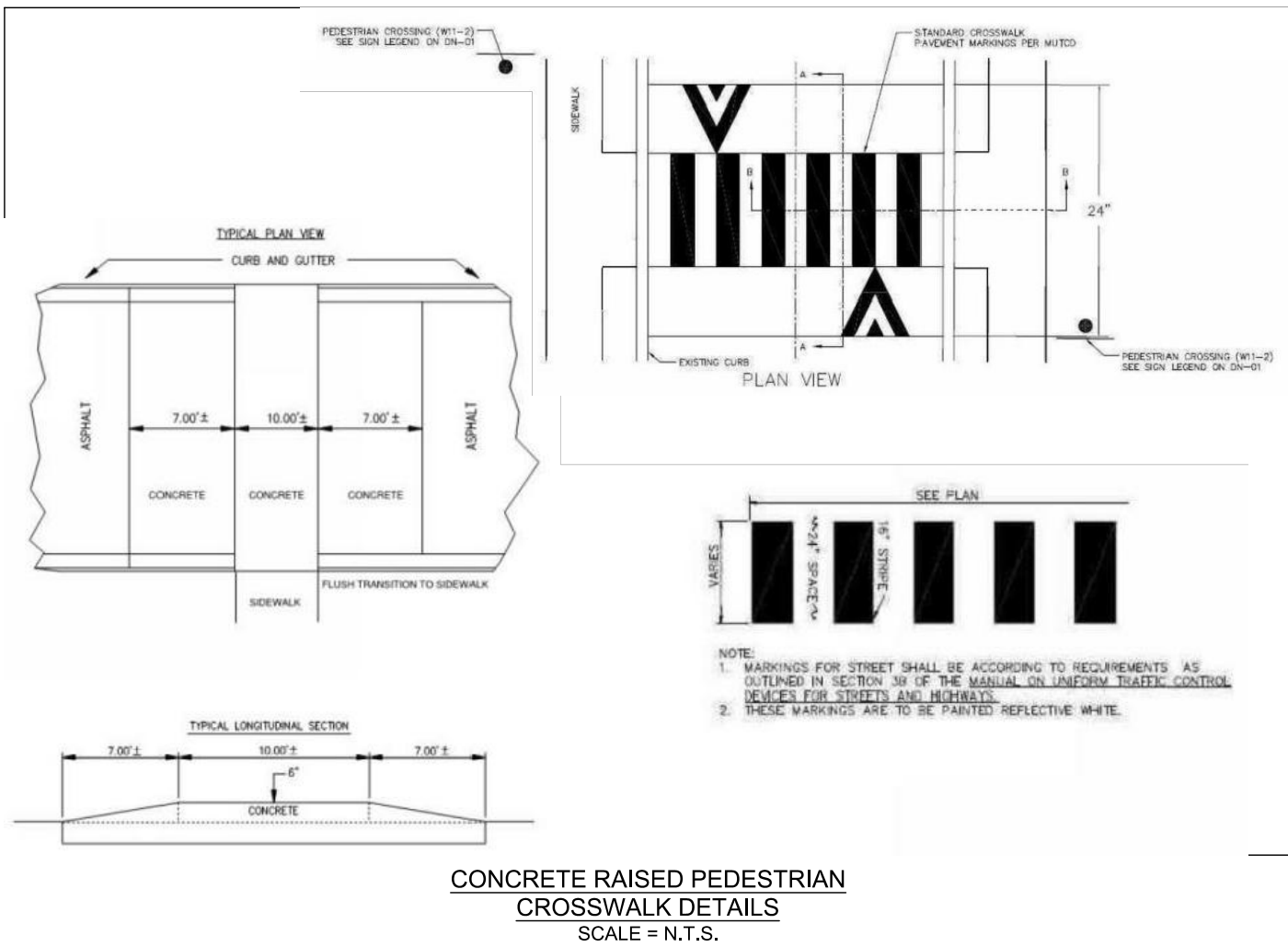
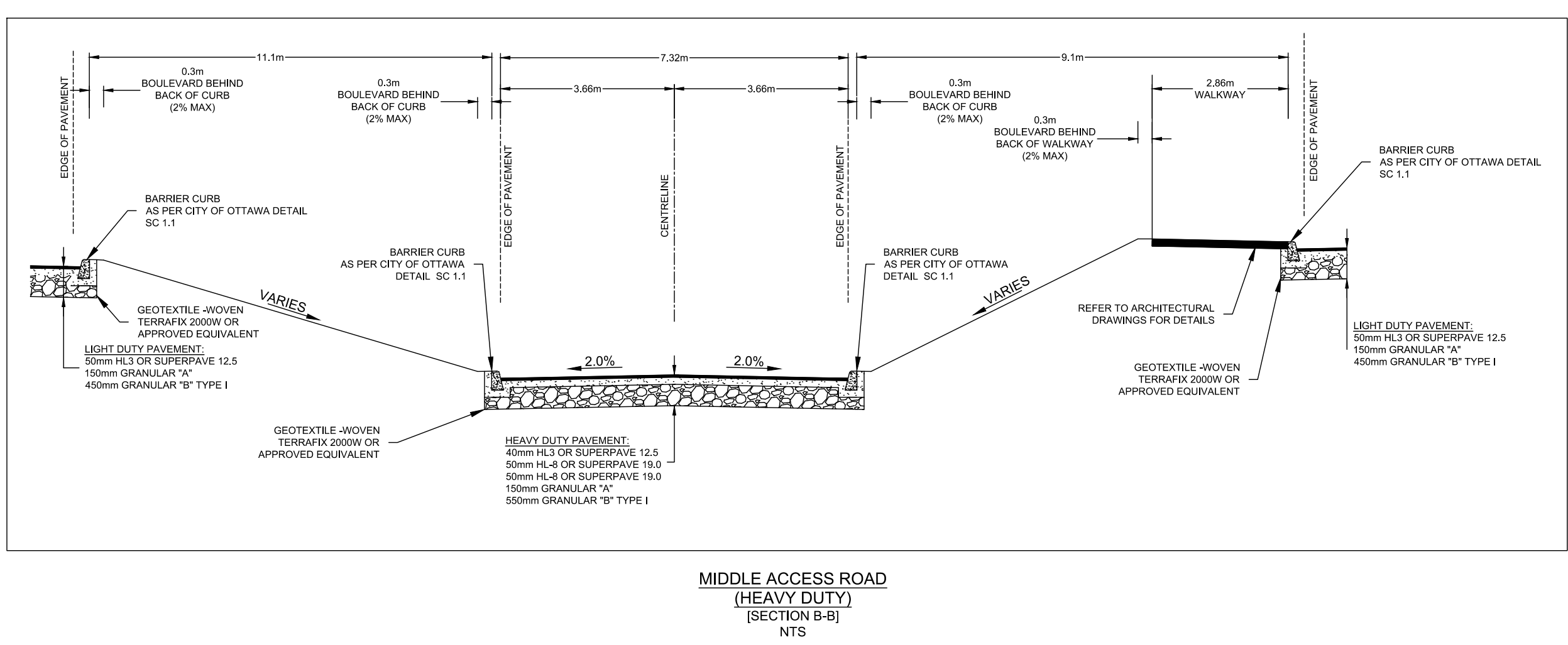
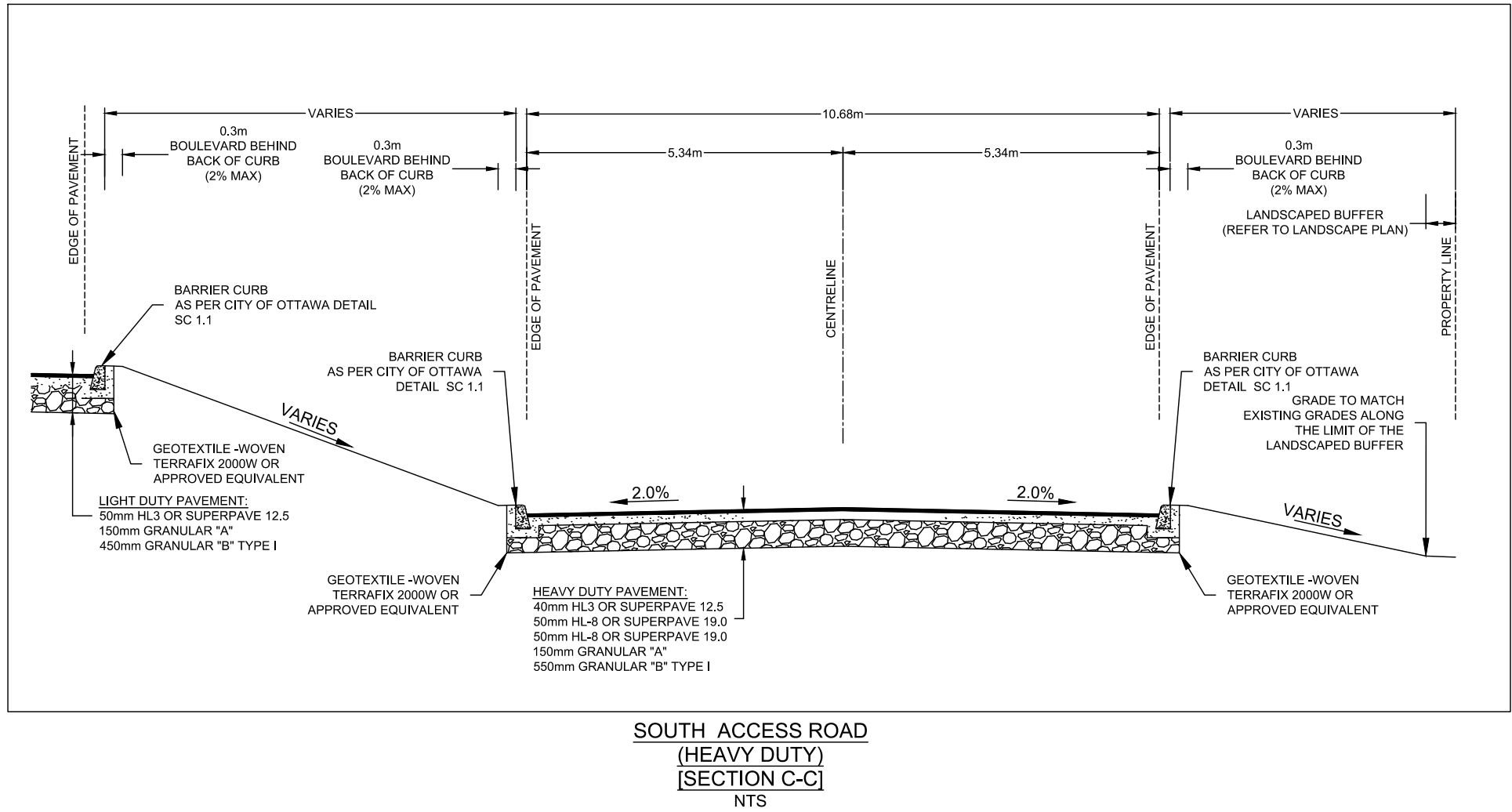
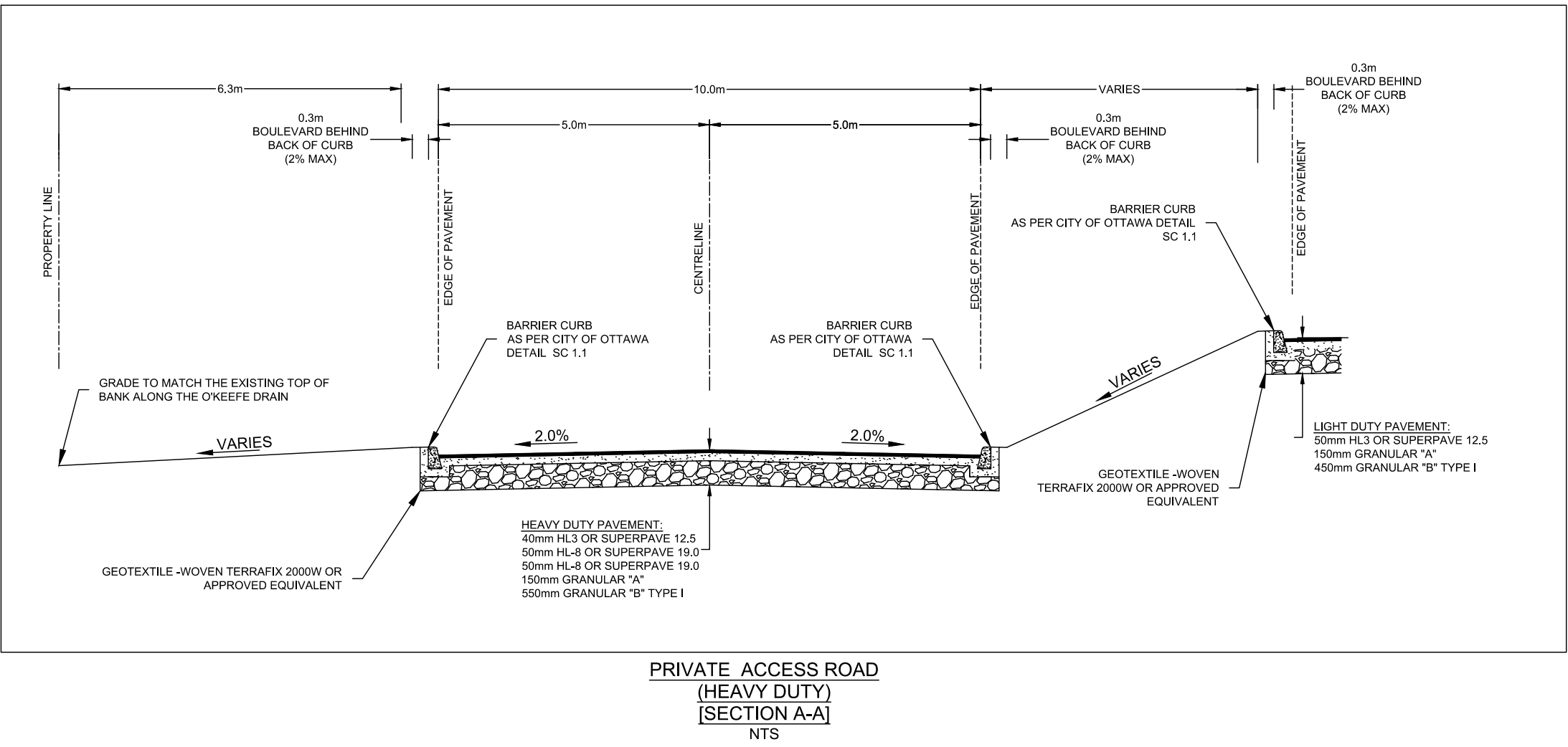
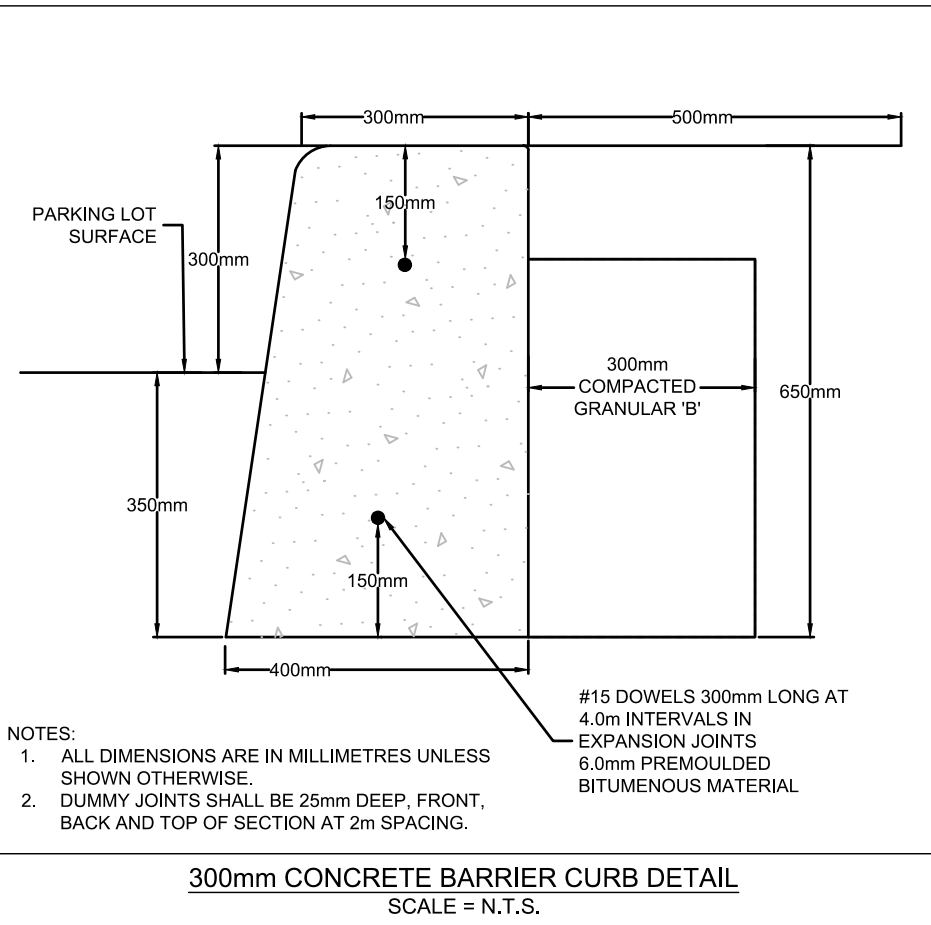
- COORDINATE AND SCHEDULE ALL WORK WITH OTHER TRADES AND CONTRACTORS.
- DETERMINE THE EXACT LOCATION, SIZE, MATERIAL AND ELEVATION OF ALL EXISTING UTILITIES PRIOR TO COMMENCING CONSTRUCTION. PROTECT AND ASSUME RESPONSIBILITY FOR ALL EXISTING UTILITIES WHETHER OR NOT SHOWN ON THIS DRAWING.
- OBTAIN ALL NECESSARY PERMITS AND APPROVALS FROM THE CITY OF OTTAWA BEFORE COMMENCING CONSTRUCTION.
- BEFORE COMMENCING CONSTRUCTION OBTAIN AND PROVIDE PROOF OF COMPREHENSIVE, ALL RISK AND OPERATIONAL LIABILITY INSURANCE FOR \$2,000,000.00. INSURANCE POLICY TO NAME OWNERS, ENGINEERS AND ARCHITECTS AS CO-INSURED.
- RESTORE ALL DISTURBED AREAS ON-SITE AND OFF-SITE, INCLUDING TRENCHES AND SURFACES ON PUBLIC ROAD ALLOWANCES TO EXISTING CONDITIONS OR BETTER TO THE SATISFACTION OF MUNICIPAL AUTHORITIES.
- REMOVE FROM SITE ALL EXCESS EXCAVATED MATERIAL, ORGANIC MATERIAL AND DEBRIS UNLESS OTHERWISE INSTRUCTED BY ENGINEER. EXCAVATE AND REMOVE FROM SITE ANY CONTAMINATED MATERIAL. ALL CONTAMINATED MATERIAL SHALL BE DISPOSED OF AT A LICENSED LANDFILL FACILITY.
- ALL ELEVATIONS ARE GEODETIC.
- REFER TO GEOTECHNICAL INVESTIGATION REPORT NO. P02789-1R (DATED NOVEMBER 1, 2012) PREPARED BY PATERSON GROUP INC., FOR SUBSURFACE CONDITIONS, CONSTRUCTION RECOMMENDATIONS AND GEOTECHNICAL INSPECTION REQUIREMENTS. THE GEOTECHNICAL CONSULTANT IS TO REVIEW ON-SITE CONDITIONS AFTER EXCAVATION PRIOR TO PLACEMENT OF THE GRANULAR MATERIAL.
- REFER TO ARCHITECT'S AND LANDSCAPE ARCHITECT'S DRAWINGS FOR BUILDING AND HARD SURFACE AREAS AND DIMENSIONS.
- REFER TO THE STORMWATER MANAGEMENT REPORT No. R-2020-044, DATED APRIL 06, 2020 PREPARED BY NOVATECH.
- SAW CUT AND KEYGRIND ASPHALT AT ALL ROAD CUTS AND ASPHALT TIE IN POINTS AS PER CITY OF OTTAWA STANDARDS (R10 AND R25).

GRADING NOTES:

- ALL TOPSOIL, ORGANIC OR DELETERIOUS MATERIAL MUST BE ENTIRELY REMOVED FROM BENEATH THE PROPOSED BUILDING AND PAVED AREAS.
- EXPOSED SUBGRADES IN PROPOSED PAVED AREAS SHOULD BE PROOF ROLLED WITH A LARGE STEEL DRUM ROLLER AND ANY SOFT AREAS EVIDENT FROM THE PROOF ROLLING SHOULD BE SUBEXCAVATED AND REPLACED WITH SUITABLE MATERIAL THAT IS FROST COMPATIBLE WITH THE EXISTING SOILS.
- THE PAVEMENT GRANULAR BASE AND SUBBASE SHOULD BE PLACED IN MAXIMUM 300mm THICK LIFTS AND COMPACTED TO A MINIMUM OF 98% OF THE MATERIAL'S STANDARD PROCTOR MAXIMUM DRY DENSITY VALUE.
- ALL CURBS AND SIDEWALKS TO BE BUILT AS PER CITY OF OTTAWA DETAIL DRAWINGS SC1.4 AND SC4.
- GRADE AND/OR FILL BEHIND PROPOSED CURB AND BETWEEN BUILDINGS AND CURBS, WHERE REQUIRED TO PROVIDE POSITIVE DRAINAGE.
- MINIMUM OF 2% GRADE FOR ALL GRASS AREAS UNLESS OTHERWISE NOTED.
- ALL GRADES BY CURBS ARE EDGE OF PAVEMENT GRADES UNLESS OTHERWISE INDICATED.
- REFER TO LANDSCAPE PLAN FOR PLANTING AND OTHER LANDSCAPE FEATURE DETAILS.
- CONTRACTOR TO PROVIDE THE CONSULTANT WITH A GRADING PLAN INDICATING THE AS-BUILT ELEVATION OF EVERY DESIGN GRADE SHOWN ON THIS PLAN.

PAVEMENT STRUCTURES:

- LIGHT DUTY (CAR PARKING AREAS ONLY)**
50mm HL3 OR SUPERPAVE 12.5
150mm GRAN "A"
450mm GRAN "B" TYPE II
SEPARATION LAYER - WOVEN GEOTEXTILE TERRAFIX 200W OR APPROVED EQUIVALENT
- HEAVY DUTY (ACCESS LANES AND HEAVY TRUCK PARKING)**
40mm HL3 OR SUPERPAVE 12.5
50mm HL8 OR SUPERPAVE 19.0
50mm HL8 OR SUPERPAVE 19.0
150mm GRAN "A"
550mm GRAN "B" TYPE II
SEPARATION LAYER - WOVEN GEOTEXTILE TERRAFIX 200W OR APPROVED EQUIVALENT
- CONCRETE APRONS**
200mm CONCRETE
150mm GRAN "A"
600mm GRAN "B" TYPE II
100mm H-40 RIGID INSULATION



NOTE:
THE POSITION OF ALL POLE LINES, CONDUITS, WATERMANS, SEWERS AND OTHER UNDERGROUND AND OVERGROUND UTILITIES AND STRUCTURES IS NOT NECESSARILY SHOWN ON THE CONTRACT DRAWINGS, AND WHERE SHOWN, THE ACCURACY OF THE POSITION OF SUCH UTILITIES AND STRUCTURES IS NOT GUARANTEED. BEFORE STARTING WORK, DETERMINE THE EXACT LOCATION OF ALL SUCH UTILITIES AND STRUCTURES AND ASSUME ALL LIABILITY FOR DAMAGE TO THEM.

NOT FOR CONSTRUCTION

SCALE				DESIGN		FOR REVIEW ONLY		LOCATION		PROJECT	
AS SHOWN				MJH/ARM	JLS	A. R. MESTWARP 100201604 10/21/2019		222 CITIGATE DRIVE, CITY OF OTTAWA		120025	
				MJH/ARM	JLS	A. R. MESTWARP 100201604 10/21/2019		NOTES AND DETAILS GRADING PLAN		REV #1	
1 APPLICATION FOR SITE PLAN APPROVAL				APR 9/2020	MJH	A. R. MESTWARP 100201604 10/21/2019		DRAWING No. 120025-NDGR			
No. REVISION				DATE	BY	A. R. MESTWARP 100201604 10/21/2019					