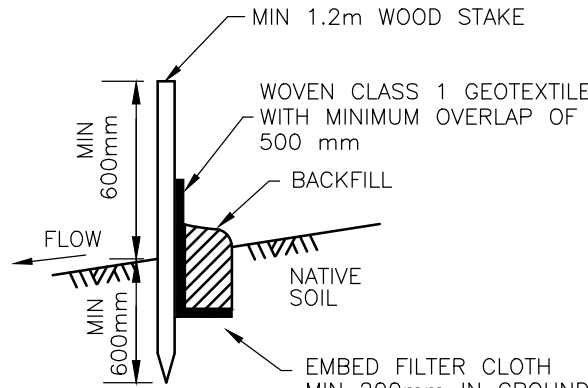


EROSION AND SEDIMENT CONTROLS
DURING CONSTRUCTION.

DURING ALL CONSTRUCTION ACTIVITIES, EROSION AND SEDIMENTATION SHALL BE CONTROLLED BY THE FOLLOWING TECHNIQUES:

1. LIMITING THE EXTENT OF EXPOSED SOILS AT ANY GIVEN TIME.
2. REVEGETATION OF EXPOSED AREAS AS SOON AS POSSIBLE.
3. MINIMIZATION OF AREA TO BE CLEARED AND DISRUPTION TO ADJACENT AREAS.
4. INSTALLATION OF FILTER CLOTH BETWEEN FRAME AND COVER ON ALL PROPOSED CATCH BASINS AND CATCH BASIN MANHOLES.
5. A SILT FENCE TO BE INSTALLED 0.3m INSIDE THE SITE PROPERTY LINE TO LOCATIONS SHOWN ON THIS DRAWING.
6. A VISUAL INSPECTION SHALL BE COMPLETED DAILY ON SEDIMENT CONTROL BARRIERS AND ANY DAMAGE REPAIRED IMMEDIATELY. CARE WILL BE TAKEN TO PREVENT DAMAGE DURING CONSTRUCTION OPERATIONS.
7. IN SOME CASES SOME BARRIERS MAY BE REMOVED TEMPORARILY TO ACCOMMODATE THE CONSTRUCTION OPERATIONS. THE AFFECTED BARRIERS WILL BE REINSTATED AT NIGHT WHEN CONSTRUCTION IS COMPLETED.
8. THE SEDIMENT CONTROL DEVICES WILL BE CLEANED OF ACCUMULATED SILT AS REQUIRED. THE DEPOSITS WILL BE DISPOSED OF AS PER THE REQUIREMENTS OF THE CONTRACT.
9. DURING THE COURSE OF CONSTRUCTION IF THE ENGINEER BELIEVES THAT ADDITIONAL PREVENTION METHODS ARE REQUIRED TO CONTROL EROSION AND SEDIMENTATION, THE CONTRACTOR WILL INSTALL ADDITIONAL SILT FENCES OR OTHER METHODS AS REQUIRED TO THE SATISFACTION OF THE ENGINEER.
10. CONSTRUCTION AND MAINTENANCE REQUIREMENTS FOR EROSION AND SEDIMENT CONTROLS TO COMPLY WITH ONTARIO PROVINCIAL STANDARD SPECIFICATION (OPSS) OPSS 805, AND CITY OF OTTAWA SPECIFICATIONS.



LIGHT DUTY SILT FENCE BARRIER
N.T.S.

NOTES:

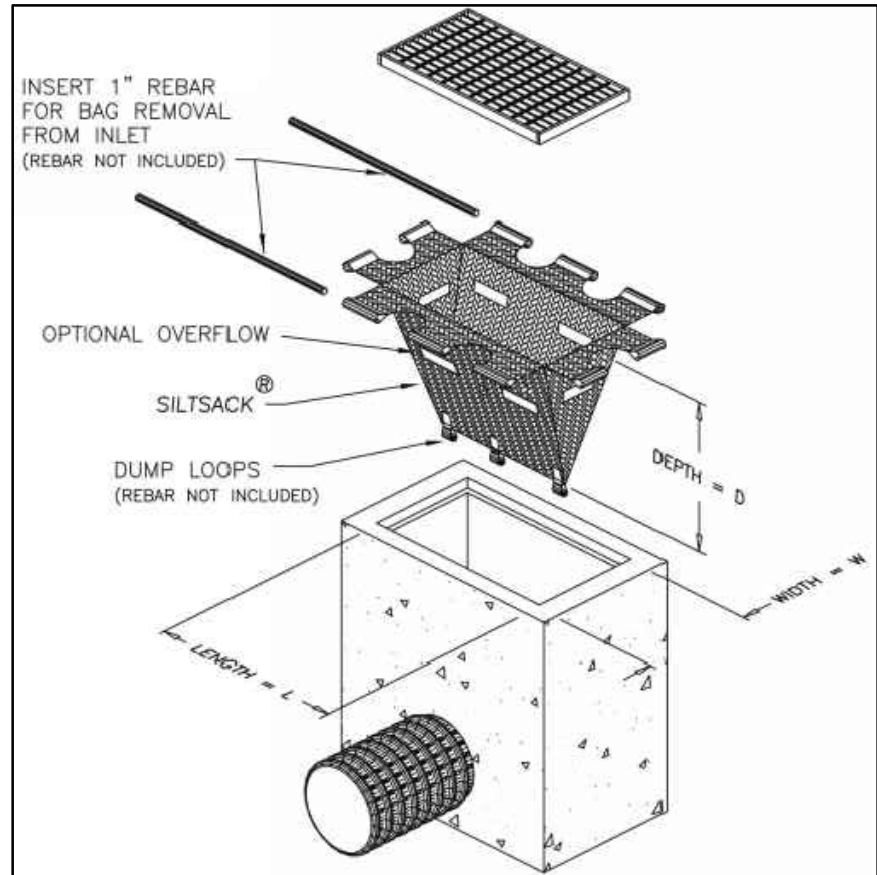
1. WOVEN WIRE FENCE TO BE FASTENED SECURELY TO WOOD POSTS WITH WIRE TIES OR STAPLES.
2. POSTS TO BE SPACED AT 2.3 METRES CENTRE TO CENTRE.
3. WHEN TWO SECTIONS OF FILTER CLOTH ADJOIN EACH OTHER THEY SHALL BE OVERLAPPED BY A MINIMUM OF 500mm.
4. MAINTENANCE SHALL BE PERFORMED AS NEEDED AND MATERIAL REMOVED WHEN "BULGES" DEVELOP IN THE SILT FENCE.
5. WOOD POSTS TO BE HARDWOOD TYPE (50mm x 50mm).
6. GEOTEXTILE TO BE EMBEDDED 200mm INTO GROUND.
7. GEOTEXTILE TO CONFORM TO OPSS 805 STANDARDS.
8. SILT FENCE MUST BE INSTALLED BEFORE COMMENCEMENT OF CONSTRUCTION AND IN ACCORDANCE WITH DETAIL. SILT FENCE CAN BE REMOVED AFTER LANDSCAPING IS COMPLETE.
9. SEDIMENTS MUST BE CLEARED AWAY WHEN THEY REACH HALF THE HEIGHT OF THE FENCE.

Jeff McEwen

JEFF MCEWEN P.ENG.
MANAGER, DEVELOPMENT REVIEW EAST BRANCH
PLANNING, INFRASTRUCTURE & ECONOMIC
DEVELOPMENT DEPARTMENT, CITY OF OTTAWA

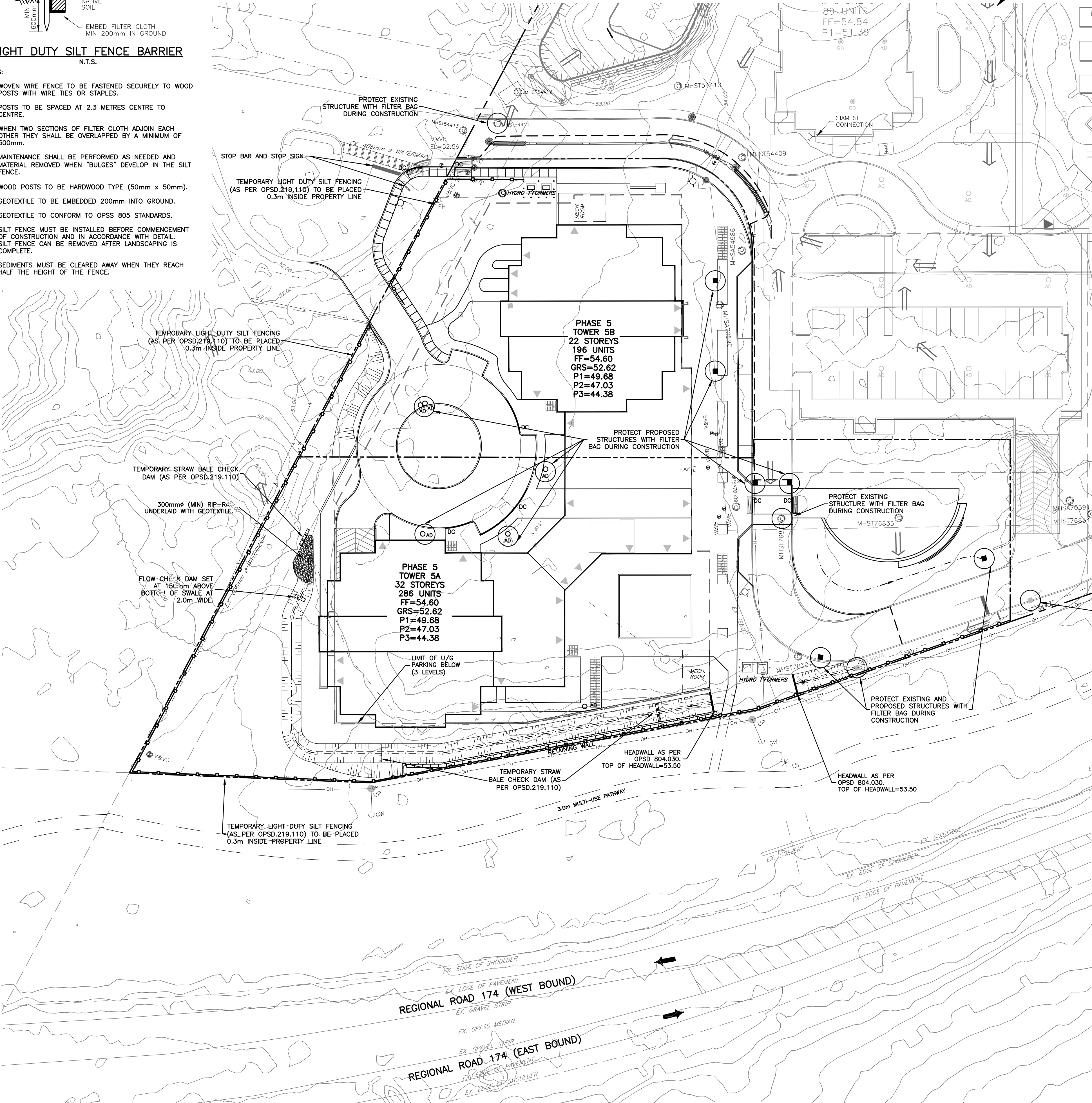
APPROVED

By Jeff McEwen at 3:22 pm, Mar 25, 2020

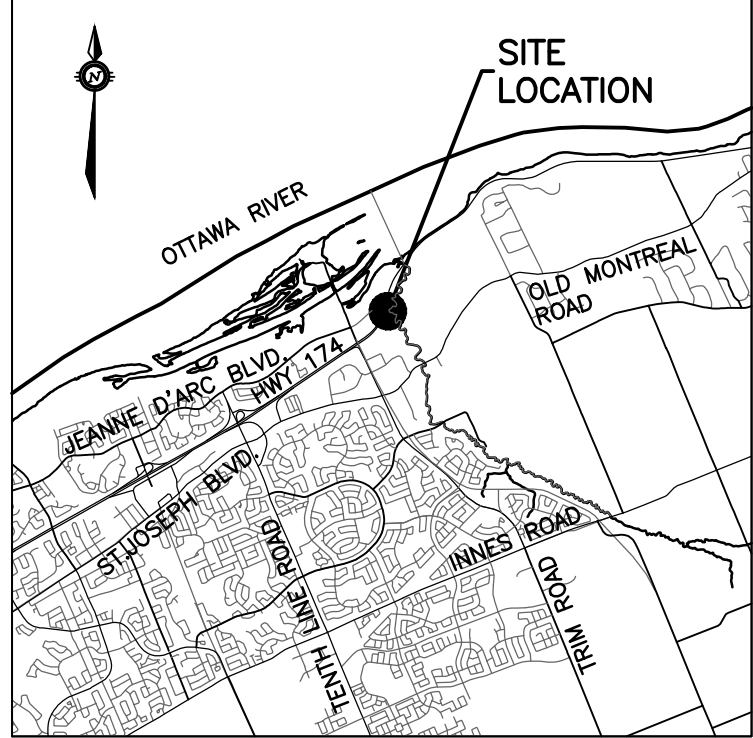


PROVIDE FILTER BAGS AS SHOWN (GEO-SYNTHETICS MANUFACTURER OR APPROVED EQUIVALENT)

FILTER BAG DETAIL
N.T.S.



KEY PLAN



EXISTING LEGEND

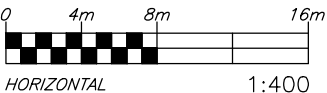
- UP
 - LS
 - CB
 - CBE
 - CBT
 - AD
 - T/G
 - GM
 - MH
 - G
 - V&VB
 - V&VC
 - FH
 - EX-250mm SAN
 - EX-300mm STM
 - EX-200mm WM
 - STM MH 211
 - SAN MH 104
 - CB1
 - CBE
 - CBT
 - AD
 - RD
 - V&VB
 - V&VC
 - 45°
 - 22°
 - 11°
 - 200x150
 - 200x200x200
 - 200x150
 - U
 - RM
 - SC
 - FF=
 - GRS=
 - P1=
 - 3.0%
 - 54.7%
 - H.P.
 - T/G=
 - T/F=
 - DC
 - ADJ
 - REL
 - STRAW BALE CHECK DAM LOCATION
- OVERHEAD WIRES
UTILITY POLE
LIGHT STANDARD
CATCHBASIN
CATCHBASIN ELBOW
CATCHBASIN TEE
AREA DRAIN
TOP OF GRATE
GAS METER
MANHOLE (SANITARY OR STORM)
GAS MAIN
VALVE AND VALVE BOX
VALVE AND VALVE CHAMBER
FIRE HYDRANT
STORM SEWER
SANITARY SEWER
WATERMAIN
TREES
FENCE
ORIGINAL GROUND ELEVATION
EXISTING CONTOUR
OVERLAND FLOW ROUTE

PROPOSED LEGEND

- 200mm SAN
 - 200mm STM
 - 200mm WM
 - STM MH 211
 - SAN MH 104
 - CB1
 - CBE
 - CBT
 - AD
 - RD
 - V&VB
 - V&VC
 - 45°
 - 22°
 - 11°
 - 200x150
 - 200x200x200
 - 200x150
 - U
 - RM
 - SC
 - FF=
 - GRS=
 - P1=
 - 3.0%
 - 54.7%
 - H.P.
 - T/G=
 - T/F=
 - DC
 - ADJ
 - REL
 - STRAW BALE CHECK DAM LOCATION
- PROPERTY LINE
SANITARY SEWER
STORM SEWER
WATERMAIN
CLAY SEAL
STORM MANHOLE
SANITARY MANHOLE
CATCHBASIN
CATCHBASIN ELBOW
CATCHBASIN TEE
AREA DRAIN AND DECK DRAIN
ROOF DRAIN
VALVE AND VALVE BOX
VALVE AND VALVE CHAMBER (W3)
FIRE HYDRANT
45° WATERMAIN BEND
22.5° WATERMAIN BEND
11.25° WATERMAIN BEND
WATERMAIN TEE (MAIN BRANCH)
WATERMAIN CROSS
WATERMETER REDUCER
WATER METER
REMOTE WATER METER READER
SIAMESE CONNECTION
FLOOR ELEVATION
GARAGE FLOOR SLAB ELEVATION
PARKING LEVEL FLOOR ELEVATION
SLOPE AND DIRECTION OF FLOW
FINAL GRADE
HIGH POINT
TERRACING
TOP OF GRATE ELEVATION
TOP OF FLANGE
OVERLAND FLOW ROUTE
PHASING LIMITS
SILT FENCE
BARRIER CURB (SC1.1)
DEPRESSED BARRIER CURB LOCATION
SWALE AND DIRECTION OF FLOW
RETAINING WALL
BUILDING ENTRY LOCATION
STRUCTURE TO BE ADJUSTED
STRUCTURE TO BE RELOCATED

TOPOGRAPHIC INFORMATION
PROVIDED BY ANNIS, O'SULLIVAN, VOLLEBEKK LTD.
DATED JULY 20, 2018

JOB BENCHMARK
PROVIDED BY ANNIS, O'SULLIVAN, VOLLEBEKK LTD.
NCC MONUMENT 01919680184
NTM-NAD83 ZONE 9
NORTHING=5040610.15
EASTING=384736.57
ELEVATION=52.68



ARCHITECTURE DE PAYSAGE Landscape architect

CIVIL Civil

exp SERVICES INC.

2650 Queensview Drive, Unit 100, Ottawa, ON K2B 8H6
T 613 688 1899 F 613 225 7330 www.exp.com

ARCHITECTES Architect

NEUF architect(e)s

630, Rue Notre-Dame O. 3^e étage, Montréal QC H3B 1S6
T 514 847 1117 NEUFarchitectes.com

SCEAU Seal

exp Services Inc.

T: +1 613 688 1899 | F: +1 613 225 7337
2650 Queensview Drive, Suite 100
Ottawa, ON K2B 8H6
Canada

www.exp.com



- BUILDINGS • EARTH & ENVIRONMENT • ENERGY •
- INDUSTRIAL • INFRASTRUCTURE • SUSTAINABILITY •

CLIENT Client



98 Rue Lois, Gatineau QC J8Y 3R7
T 819 243 7392 www.brigil.com

Ouvrage Project

PETRIE'S LANDING I -
PHASES 3-5

EMPLACEMENT Location NO PROJET No
OTTAWA, ON. OTT-00247308-A0

NO	REVISION	DATE (aa.mm.jj)
1	ISSUED FOR REVIEW	18.08.03
2	ISSUED FOR SITE PLAN APPROVAL	18.09.14
3	ISSUED FOR CLIENT REVIEW	19.04.05
4	ISSUED FOR SITE PLAN APPROVAL	19.05.10
5	ISSUED FOR SITE PLAN APPROVAL	19.05.22
6	ISSUED FOR SPA-CITY COMMENTS	19.07.22
7	REVISED PER CITY COMMENTS	19.07.30

DESSIN PAR Drawn by

S.BUTLER

DATE (aa.mm.jj)

18.07.18

TITRE DU DESSIN Drawing Title

EROSION & SEDIMENT
CONTROL PLAN

TOWERS 5A & 5B

REVISION Revision NO DESSIN Dwg Number

C301

#14602

D-07-12-18-0143