

I:\P_1140011467\CAD\11467 A-203 Basement 1.dwg



NOTES GÉNÉRALES / General Notes

- Ces documents d'architecture sont la propriété exclusive de NEUF architect(e)s et ne peuvent être utilisés, reproduits ou copiés sans autorisation écrite au préalable. / These architectural documents are the exclusive property of NEUF architect(e)s and cannot be used, copied or reproduced without written pre-authorization.
- Les dimensions apparaissant aux documents doivent être vérifiées par l'entrepreneur avant le début des travaux. / All dimensions which appear on the documents must be verified by the contractor before starting the work.
- Veillez aviser l'architecte de toute dimension erreur et/ou divergences entre ces documents et ceux des autres professionnels. / The architect must be notified of all errors, omissions and discrepancies between these documents and those of other professionals.
- Les dimensions sur ces documents doivent être lues et non mesurées. / The dimensions on these documents must be read and not measured.

PARKING IDENTIFICATION LEGEND

TYPE:
 R - RESIDENTIAL
 V - VISITOR
 C - COMMERCIAL

DEDICATED TO:
 T3 - TOWER 3
 T4 - TOWER 4
 T5a - TOWER 5a
 T5b - TOWER 5b

SYMBOLS LEGEND:

→ PAINTED CIRCULATION ARROW
 ♿ BICYCLE PARKING SPACE
 ♿ ACCESSIBLE PARKING SPACE
 ♿ CAR SHARE PARKING SPACE

APPROVED
 By Jeff McEwen at 3:07 pm, Mar 25, 2020

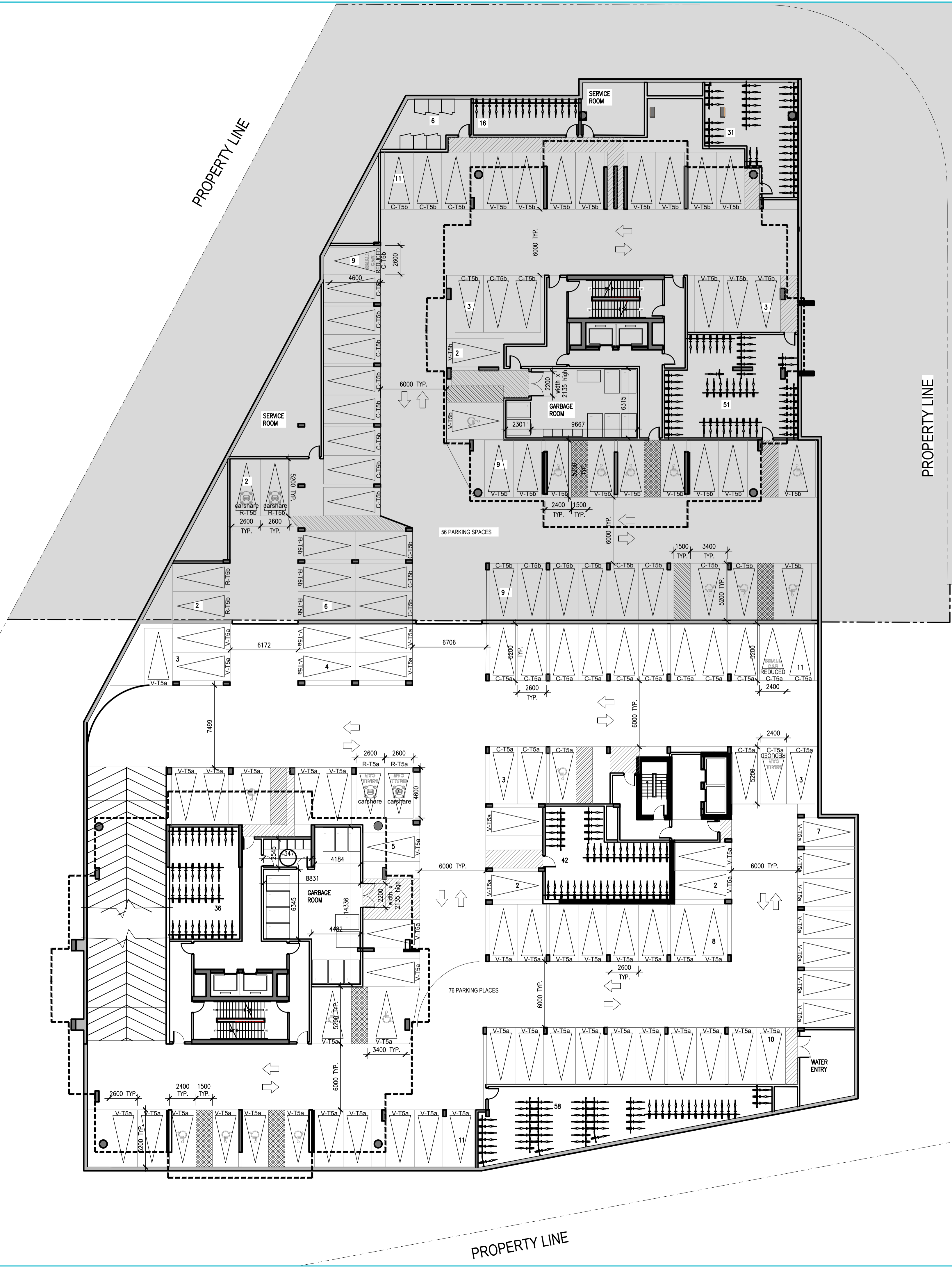
Jeff McEwen
 JEFF MCEWEN P.ENG.
 MANAGER, DEVELOPMENT REVIEW EAST BRANCH
 PLANNING, INFRASTRUCTURE & ECONOMIC
 DEVELOPMENT DEPARTMENT, CITY OF OTTAWA

ARCHITECTURE DE PAYSAGE Landscape architect
LEVSTEK CONSULTANTS INC.
 5871 HUGH CRESCENT, OTTAWA ON K0A 2W0
 T 613-426-0518 EMAIL:LEVSTEK@LARCQUELEVSTEK.COM

CIVIL Civil
EXP SERVICES INC.
 2650 QUEENSWAY DRIVE, SUITE 100, OTTAWA ON K0A 2T0
 T 613-733-0332 EMAIL:BRUCE.THOMAS@EXP.COM & JASON.FITZPATRICK@EXP.COM

ARCHITECTS
 Architect
NEUF architect(e)s SENCRL
 630, boul. René-Lévesque O. 32e étage, Montréal QC H3B 1S6
 T 514 847 1117 NEUFarchitectes.com

SCEAU Seal



CLIENT Client
BRIGIL
 88 Lois Street, Gatineau, QC J0Y 3R7
 T 819-243-7392 Email: J.Rivard@brigil.com

OUVRAGE Project
PETRIE'S LANDING I - PHASES 3 - 5
 EMPLACEMENT Location NO PROJET No.
 OTTAWA, ONTARIO 11467

| NO | REVISION | DATE (aa.mm.jj) |
|----|-------------------------------|-----------------|
| A | FOR SPA - CITY COMMENTS | 2018.07.18 |
| C | FOR SPA - CITY COMMENTS REV 2 | 2018.08.07 |
| D | FOR COORDINATION | 2019.04.04 |
| E | FOR SPA-CITY COMMENTS-REV3 | 2019.05.10 |
| F | FOR COMMENTS | 2019.06.27 |
| G | FOR SPA - CITY COMMENTS-REV4 | 2019.07.19 |
| H | FOR SPA - CITY COMMENTS-REV5 | 2019.09.04 |

*Preliminary
 DO NOT USE FOR
 CONSTRUCTION*

DESSINÉ PAR Drawn by
 OC
 DATE (aa.mm.jj)
 20.01.21
 TITRE DU DESSIN Drawing Title

VÉRIFIÉ PAR Checked by
 ANT. C / FP
 ÉCHELLE Scale
 1:200

BASEMENT 1 - TOWER 5a

REVISION Revision NO. DESSIN Dwg Number
H A202.3
 #14602

D07-12-18-0143