

ASPHALT AND CONCRETE SURFACES TO BE REMOVED

REMOVAL

REMOVALS NOTES:

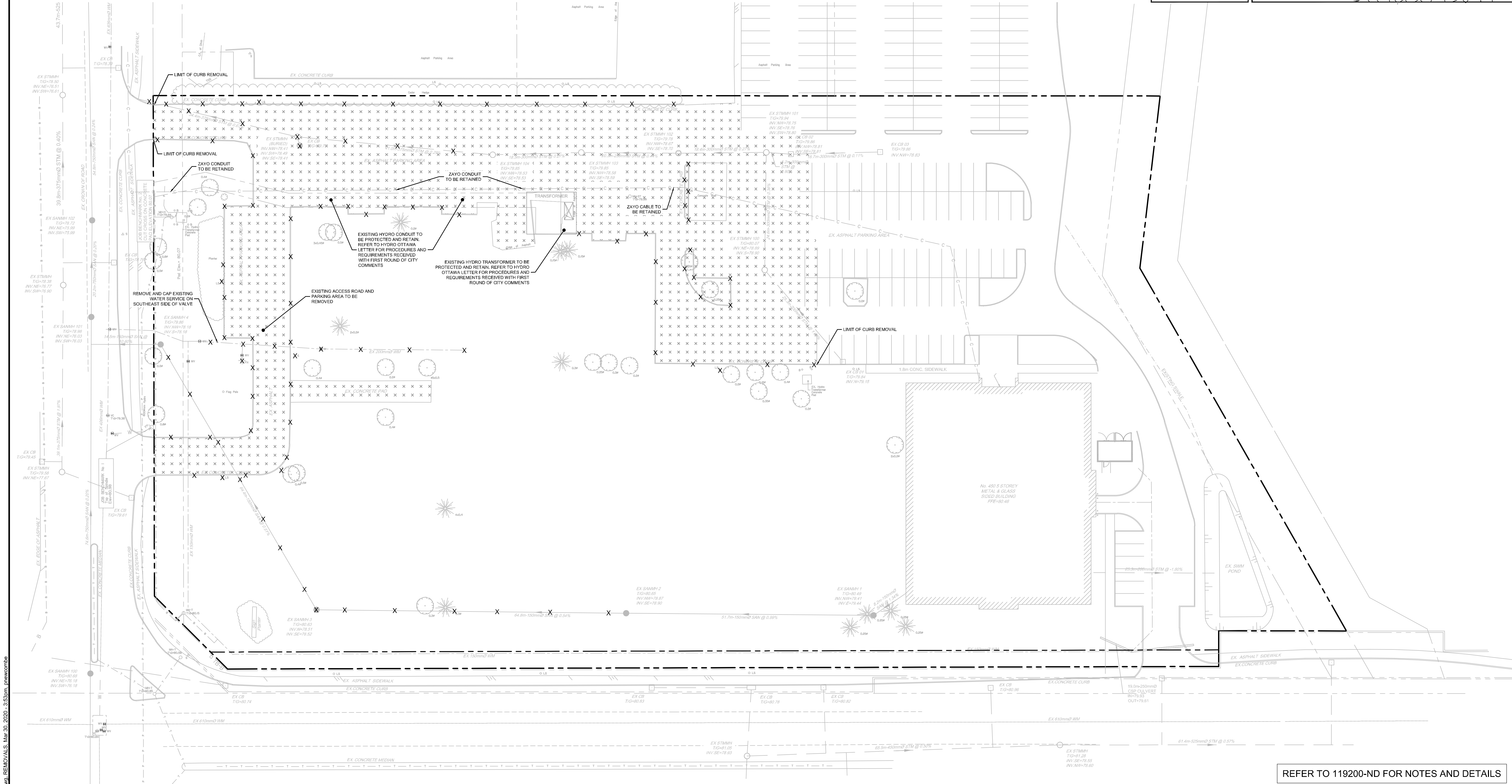
1. OBTAIN ALL APPROVALS AND PERMITS FROM THE CITY OF OTTAWA PRIOR TO ANY REMOVAL WORK OR CONSTRUCTION.

2. ALL STRUCTURES AND PIPES WITHIN THE PROPOSED BUILDING AREA TO BE REMOVED AND DISPOSED OF OFF SITE.

3. REFER TO LANDSCAPE DRAWINGS AND TREE CONSERVATION REPORT BY RUHLAND & ASSOCIATES FOR LANDSCAPING REMOVAL INFORMATION

NORTH

KEY PLAN  
N.T.S.



REFER TO 119200-ND FOR NOTES AND DETAILS

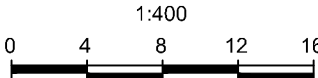
NOTE:  
THE POSITION OF ALL POLE LINES, CONDUITS, WATERMAINS, SEWERS AND OTHER UNDERGROUND AND OVERGROUND UTILITIES AND STRUCTURES IS NOT NECESSARILY SHOWN ON THE CONTRACT DRAWINGS, AND WHERE SHOWN, THE ACCURACY OF THE POSITION OF SUCH UTILITIES AND STRUCTURES IS NOT GUARANTEED. BEFORE STARTING WORK, DETERMINE THE EXACT LOCATION OF ALL SUCH UTILITIES AND STRUCTURES AND ASSUME ALL LIABILITY FOR DAMAGE TO THEM.

NOT FOR  
CONSTRUCTION

No.	REVISION	DATE	BY
1.	SUBMITTED TO CITY IN RESUBMISSION PACKAGE	MAR 27/20	CJR

SCALE

1:400



DESIGN

CHECKED

DRAWN

CHECKED

APPROVED

FOR REVIEW ONLY



**NOVATECH**  
Engineers, Planners & Landscape Architects  
Suite 200, 240 Michael Cowpland Drive  
Ottawa, Ontario, Canada K2M 1P6  
Telephone (613) 254-9643  
Facsimile (613) 254-5867  
Website www.novatech-eng.com

LOCATION  
3026 SOLANDT ROAD, OTTAWA ON.

DRAWING NAME  
REMOVALS PLAN

PROJECT No. 119200  
REV. 1  
DRAWING No. 119140-REM

M:\2019\119200\CAD\Design\119200-REM.dwg, REMOVALS, Mar 30, 2020, 3:53pm, pnowcombo

FLANK112010 - 84 (mm)50mm

18103