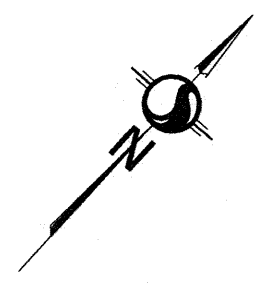
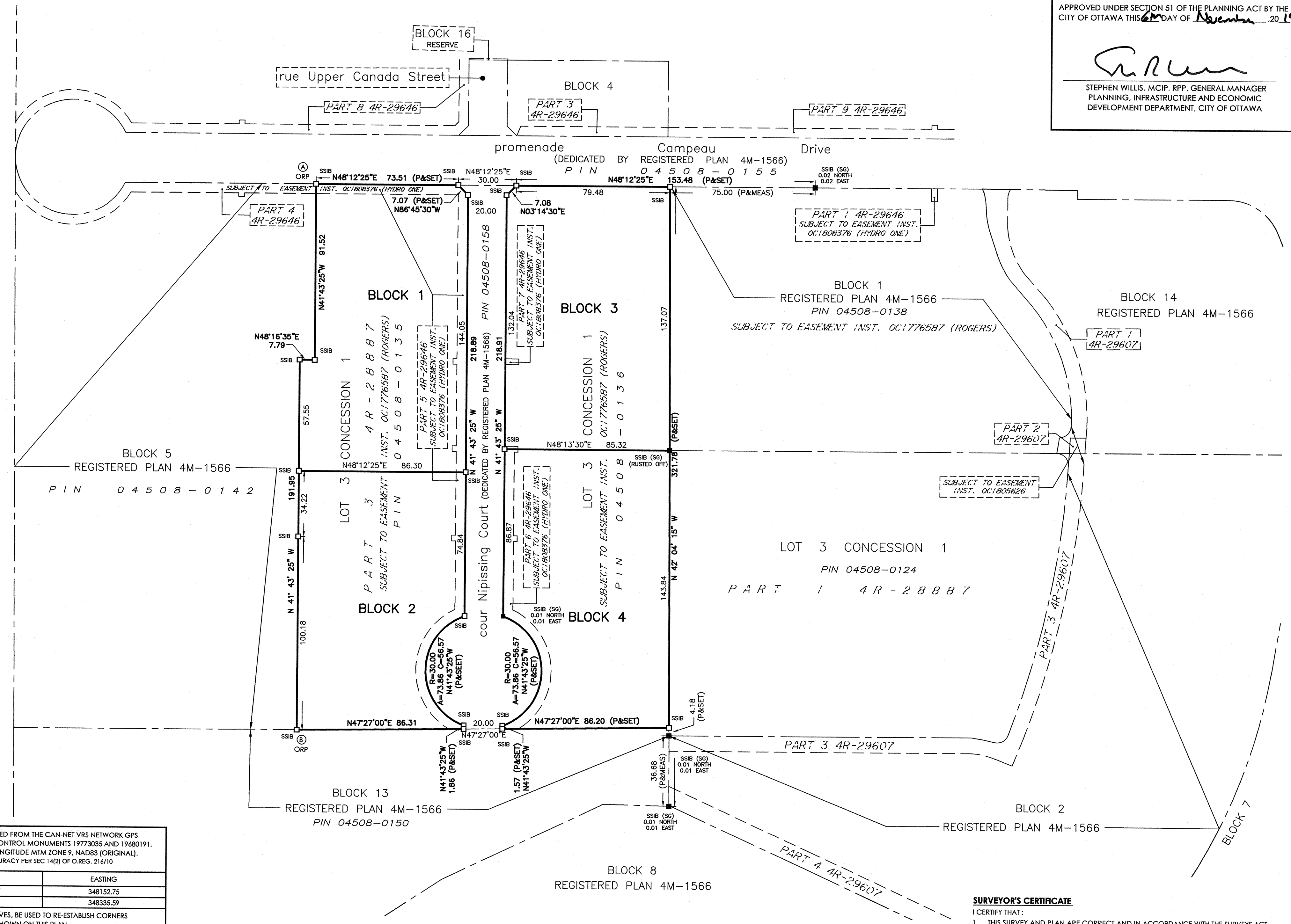


15 June 2019 10:24 AM
 M:\victoria\16161000_15_15_topographic\dwg\161612445\161612445-432-kocak@stnec.com - Sub-Dwg.dwg



ROAD ALLOWANCE BETWEEN CONCESSIONS 1 AND 2 (NOT TRAVELLED)



APPROVED UNDER SECTION 51 OF THE PLANNING ACT BY THE CITY OF OTTAWA THIS 16th DAY OF November, 2019

[Signature]
 STEPHEN WILLIS, MCIP, RPP, GENERAL MANAGER
 PLANNING, INFRASTRUCTURE AND ECONOMIC DEVELOPMENT DEPARTMENT, CITY OF OTTAWA

PLAN 4M- 1642

I CERTIFY THAT THIS PLAN IS REGISTERED IN THE LAND REGISTRY OFFICE FOR THE LAND TITLES DIVISION OF OTTAWA-CARLETON No.4 AT 14:51 O'CLOCK ON THE 12th DAY OF November 2019 AND ENTERED IN THE PARCEL REGISTER FOR PROPERTY IDENTIFIERS 04508-0135 & 04508-0136, AND THE REQUIRED CONSENTS ARE REGISTERED AS PLAN DOCUMENT NUMBER OC-2164114.

[Signature]
 REPRESENTATIVE FOR LAND REGISTRAR

THIS PLAN COMPRISES OF ALL OF PINS 04508-0135 & 04508-0136. BLOCKS 1, 2, 3 & 4 - SUBJECT TO EASEMENT PER INST. OC1776587 (ROGERS), SUBJECT TO EASEMENT OVER PARTS 5, 6 & 7, PLAN 4R-29646 AS IN OC1808376 (HYDRO ONE).

PLAN OF SURVEY OF
PART OF LOT 3 CONCESSION 1
 (GEOGRAPHIC TOWNSHIP OF HUNTLEY)
CITY OF OTTAWA

Scale 1:1250

METRIC CONVERSION
 DISTANCES AND COORDINATES SHOWN ON THIS PLAN ARE IN METRES AND CAN BE CONVERTED TO FEET BY DIVIDING BY 0.3048

GRID SCALE CONVERSION
 DISTANCES ARE GROUND AND CAN BE CONVERTED TO GRID BY MULTIPLYING BY THE COMBINED SCALE FACTOR OF 0.99995.

BEARING NOTE
 BEARINGS ARE GRID, DERIVED FROM CAN-NET VRS NETWORK GPS OBSERVATIONS ON NCC HORIZONTAL CONTROL MONUMENTS 19773035 AND 19680191, CENTRAL MERIDIAN, 76° 30' WEST LONGITUDE MTM ZONE 9, NAD83 (ORIGINAL).
 19773035 N:5006060.42 E:324888.04
 19680191 N:5033564.26 E:388064.94

LEGEND

■	DENOTES	FOUND MONUMENTS
□		SET MONUMENTS
IB		IRON BAR
IBO		ROUND IRON BAR
SIB		STANDARD IRON BAR
SSIB		SHORT STANDARD IRON BAR
CC		CUT CROSS
CP		CONCRETE PIN
WIT		WITNESS
PIN		PROPERTY IDENTIFICATION NUMBER
MEAS		MEASURED
PROP		PROPORTIONED
OU		ORIGIN UNKNOWN
SG		STANTEC GEOMATICS LTD.
P		REGISTERED PLAN 4M-1566

OWNER'S CERTIFICATE

THIS IS TO CERTIFY THAT:
 1. BLOCKS 1 TO 4, BOTH INCLUSIVE, HAVE BEEN LAID OUT IN ACCORDANCE WITH OUR INSTRUCTIONS.

AUG 14 2019
 DATE

[Signature]
 JEFF PARKES, PRESIDENT
 WEST OTTAWA LAND HOLDINGS INC.
 I HAVE THE AUTHORITY TO BIND THE CORPORATION

AUG 14 2019
 DATE

[Signature]
 KEVIN McCRANN, VICE PRESIDENT
 WEST OTTAWA LAND HOLDINGS INC.
 I HAVE THE AUTHORITY TO BIND THE CORPORATION

OBSERVED REFERENCE POINTS DERIVED FROM THE CAN-NET VRS NETWORK GPS OBSERVATIONS ON NCC HORIZONTAL CONTROL MONUMENTS 19773035 AND 19680191, CENTRAL MERIDIAN, 76° 30' WEST LONGITUDE MTM ZONE 9, NAD83 (ORIGINAL). COORDINATES TO URBAN ACCURACY PER SEC 14(2) OF O.REG. 214/10

ORP ID	NORTHING	EASTING
Ⓐ	5017267.37	348152.75
Ⓑ	5017050.63	348335.59

COORDINATES CANNOT, IN THEMSELVES, BE USED TO RE-ESTABLISH CORNERS OR BOUNDARIES SHOWN ON THIS PLAN.

SURVEYOR'S CERTIFICATE

I CERTIFY THAT:
 1. THIS SURVEY AND PLAN ARE CORRECT AND IN ACCORDANCE WITH THE SURVEYS ACT, THE SURVEYORS ACT AND THE LAND TITLES ACT AND THE REGULATIONS MADE UNDER THEM.
 2. THE SURVEY WAS COMPLETED ON THE 19 DAY OF MAY, 2019

June 17/19
 DATE

[Signature]
 BRIAN J. WEBSTER
 ONTARIO LAND SURVEYOR

Stantec Geomatics Ltd.
 CANADA LANDS SURVEYORS
 ONTARIO LAND SURVEYORS
 1381 CLYDE AVENUE, SUITE 400
 OTTAWA, ONTARIO, K2C 3E4
 TEL. 613.722.4420 FAX. 613.722.2799
 stantec.com

DRAWN: NJ CHECKED: BW PM: BW FIELD: CA PROJECT No.: 161612445-432