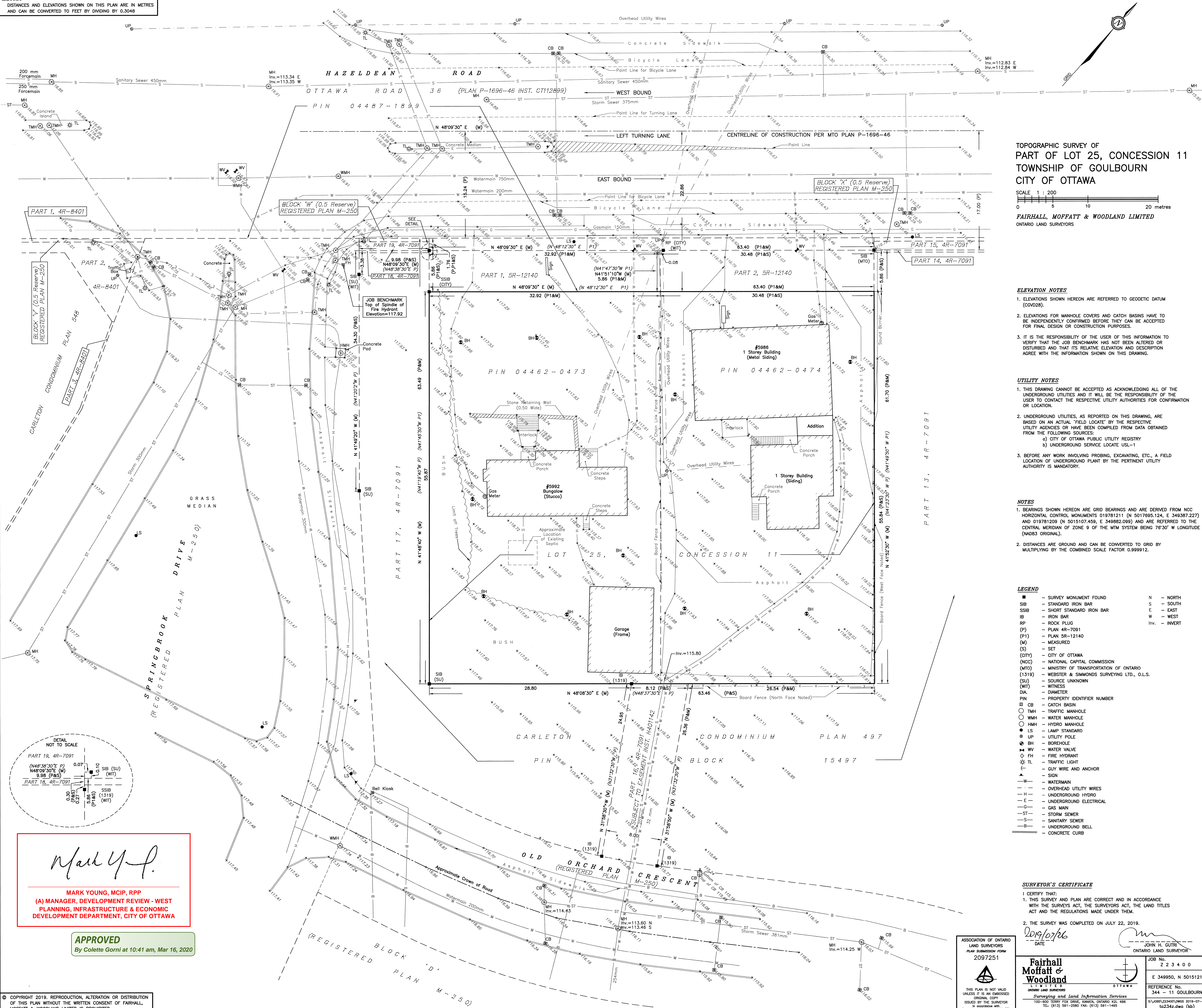


METRIC
DISTANCES AND ELEVATIONS SHOWN ON THIS PLAN ARE IN METRES
AND CAN BE CONVERTED TO FEET BY DIVIDING BY 0.3048



TOPOGRAPHIC SURVEY OF
PART OF LOT 25, CONCESSION 11
TOWNSHIP OF GOULBOURN
CITY OF OTTAWA

SCALE 1 : 200
0 5 10 20 metres

FAIRHALL, MOFFATT & WOODLAND LIMITED
ONTARIO LAND SURVEYORS

ELEVATION NOTES

- ELEVATIONS SHOWN HEREON ARE REFERRED TO GEODETIC DATUM (CGVD28).
- ELEVATIONS FOR MANHOLE COVERS AND CATCH BASINS HAVE TO BE INDEPENDENTLY CONFIRMED BEFORE THEY CAN BE ACCEPTED FOR FINAL DESIGN OR CONSTRUCTION PURPOSES.
- IT IS THE RESPONSIBILITY OF THE USER OF THIS INFORMATION TO VERIFY THAT THE JOB BENCHMARK HAS NOT BEEN ALTERED OR DISTURBED AND THAT ITS RELATIVE ELEVATION AND DESCRIPTION AGREE WITH THE INFORMATION SHOWN ON THIS DRAWING.

UTILITY NOTES

- THIS DRAWING CANNOT BE ACCEPTED AS ACKNOWLEDGING ALL OF THE UNDERGROUND UTILITIES AND IT WILL BE THE RESPONSIBILITY OF THE USER TO CONTACT THE RESPECTIVE UTILITY AUTHORITIES FOR CONFIRMATION OR LOCATION.
- UNDERGROUND UTILITIES, AS REPORTED ON THIS DRAWING, ARE BASED ON AN ACTUAL 'FIELD LOCATE' BY THE RESPECTIVE UTILITY AGENCIES OR HAVE BEEN COMPILED FROM DATA OBTAINED FROM THE FOLLOWING SOURCES:
 - CITY OF OTTAWA PUBLIC UTILITY REGISTRY
 - UNDERGROUND SERVICE LOCATE USL-1
- BEFORE ANY WORK INVOLVING PROBING, EXCAVATING, ETC., A FIELD LOCATION OF UNDERGROUND PLANT BY THE PERTINENT UTILITY AUTHORITY IS MANDATORY.

NOTES

- BEARINGS SHOWN HEREON ARE GRID BEARINGS AND ARE DERIVED FROM NCC HORIZONTAL CONTROL MONUMENTS 019781211 (N 5017695.124, E 349387.227) AND 019781209 (N 5015107.459, E 349882.099) AND ARE REFERRED TO THE CENTRAL MERIDIAN OF ZONE 9 OF THE NAD83 SYSTEM BEING 76°30' W LONGITUDE (NAD83 ORIGINAL).
- DISTANCES ARE GROUND AND CAN BE CONVERTED TO GRID BY MULTIPLYING BY THE COMBINED SCALE FACTOR 0.999912.

LEGEND

■	SURVEY MONUMENT FOUND	N	NORTH
SIB	STANDARD IRON BAR	S	SOUTH
SSIB	SHORT STANDARD IRON BAR	E	EAST
IB	IRON BAR	W	WEST
RP	ROCK PLUG	Inv.	INVERT
(P)	PLAN 4R-7091		
(P1)	PLAN 5R-12140		
(M)	MEASURED		
(S)	SET		
(CITY)	CITY OF OTTAWA		
(NCC)	NATIONAL CAPITAL COMMISSION		
(MTO)	MINISTRY OF TRANSPORTATION OF ONTARIO		
(1319)	WEBSTER & SIMMONDS SURVEYING LTD., O.L.S.		
(SU)	SOURCE UNKNOWN		
(WT)	WITNESS		
DIA.	DIAMETER		
PIN	PROPERTY IDENTIFIER NUMBER		
CB	CATCH BASIN		
TMH	TRAFFIC MANHOLE		
WMH	WATER MANHOLE		
HMH	HYDRO MANHOLE		
LS	LAMP STANDARD		
UP	UTILITY POLE		
BH	BOREHOLE		
WV	WATER VALVE		
FH	FIRE HYDRANT		
TL	TRAFFIC LIGHT		
▲	GUY WIRE AND ANCHOR		
—	SIGN		
—	WATERMAIN		
—	OVERHEAD UTILITY WIRES		
—	UNDERGROUND HYDRO		
—	UNDERGROUND ELECTRICAL		
—	GAS MAIN		
—	STORM SEWER		
—	SANITARY SEWER		
—	UNDERGROUND BELL		
—	CONCRETE CURB		

SURVEYOR'S CERTIFICATE

- I CERTIFY THAT:
- THIS SURVEY AND PLAN ARE CORRECT AND IN ACCORDANCE WITH THE SURVEYORS ACT, THE SURVEYORS ACT, THE LAND TITLES ACT AND THE REGULATIONS MADE UNDER THEM.
 - THE SURVEY WAS COMPLETED ON JULY 22, 2019.

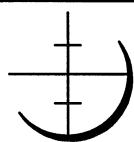
2019/07/26
DATE
JOHN H. GUTHRIE
ONTARIO LAND SURVEYOR

ASSOCIATION OF ONTARIO
LAND SURVEYORS
PLAN SUBMISSION FORM
2097251

THIS PLAN IS NOT VALID
UNLESS IT IS AN EMBOSSED
ORIGINAL COPY
ISSUED BY THE SURVEYOR
IN ACCORDANCE WITH
REGULATION 1028, SECTION 28 (3)

Fairhall
Moffatt &
Woodland
ONTARIO LAND SURVEYORS

Surveying and Land Information Services
100-600 TERRY FOX DRIVE, KANATA, ONTARIO K2L 4B6
TEL: (613) 591-2880 FAX: (613) 591-1485
www.fairhall.com



JOB No.
Z 23400
E 349950, N 5015121
REFERENCE No.
344 - 11 GOULBOURN
S:\J089\223400\DWG 2019-07-25
tp2342.dwg (kb)

APPROVED

By Colette Gorni at 10:41 am, Mar 16, 2020

MARK YOUNG, MCIP, RPP
(A) MANAGER, DEVELOPMENT REVIEW - WEST
PLANNING, INFRASTRUCTURE & ECONOMIC
DEVELOPMENT DEPARTMENT, CITY OF OTTAWA