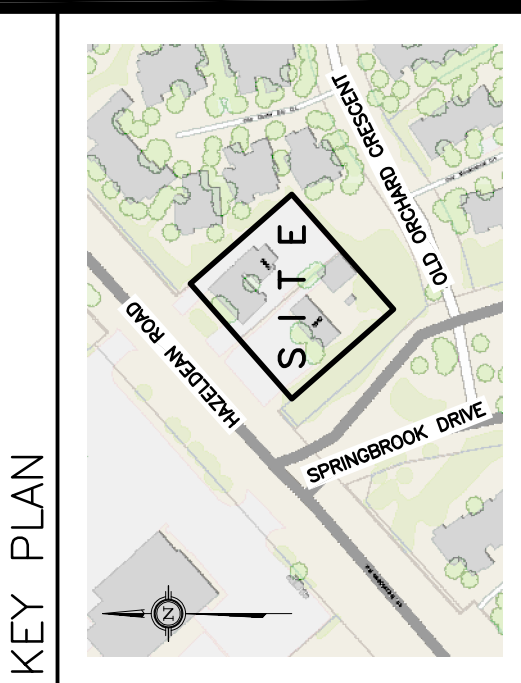


DRAWING LEGEND

CB	CATCH BASIN
MH	MANHOLE
CB/MH	CATCH BASIN/MANHOLE
SPL	SPRINGLINE OF PIPE
INV	INVERT OF PIPE
INV	SUBIRIGNS IN CB
SKN	SANITARY SEWER
ST	STORM SEWER
WS/WM	WATER SERVICE/WATERMAIN
CS	CURB STOP & STANDPOST
TV	VALVE & VALVE BOX
PH	FIRE HYDRANT
WM	WATER METER
W	REMOTE WATER METER READOUT
4.6675	EXISTING GRADE ELEVATION
0.5%	PROPOSED GRADE ELEVATION
0.5%	EXISTING SLOPE OF GRADE
0.5%	PROPOSED SLOPE OF GRADE
→	EMERGENCY OVERLAND FLOW
T.O.S.	TOP OF SLOPE
B.O.S.	BOTTOM OF SLOPE
---	CENTRELINE OF SHALE
---	PROPERTY LINE
---	SILT FENCE BARRIER
D.C.	150mm CURB/DEPRESSED CURB
---	LIGHT-DUTY PAVEMENT
---	HEAVY-DUTY PAVEMENT
CRZ	CRITICAL ROOT ZONE
FFL	FIRST FLOOR LEVEL
TOP	TOP OF FOUNDATION
USF	UNDERSIDE OF FOOTING



No.	DATE	REVISION
4	FEB 20-20	RE-ISSUED FOR APPROVAL
3	NOV 22-19	RE-ISSUED FOR APPROVAL
2	SEP 5-19	ISSUED FOR APPROVAL
1	AUG 30-19	ISSUED FOR COORDINATION

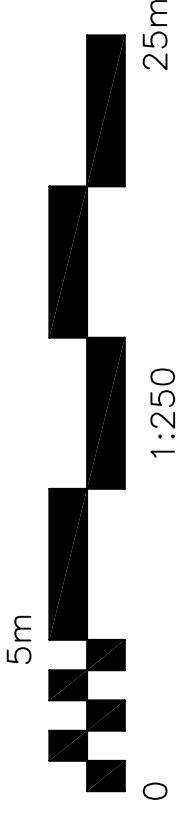
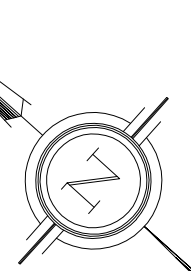
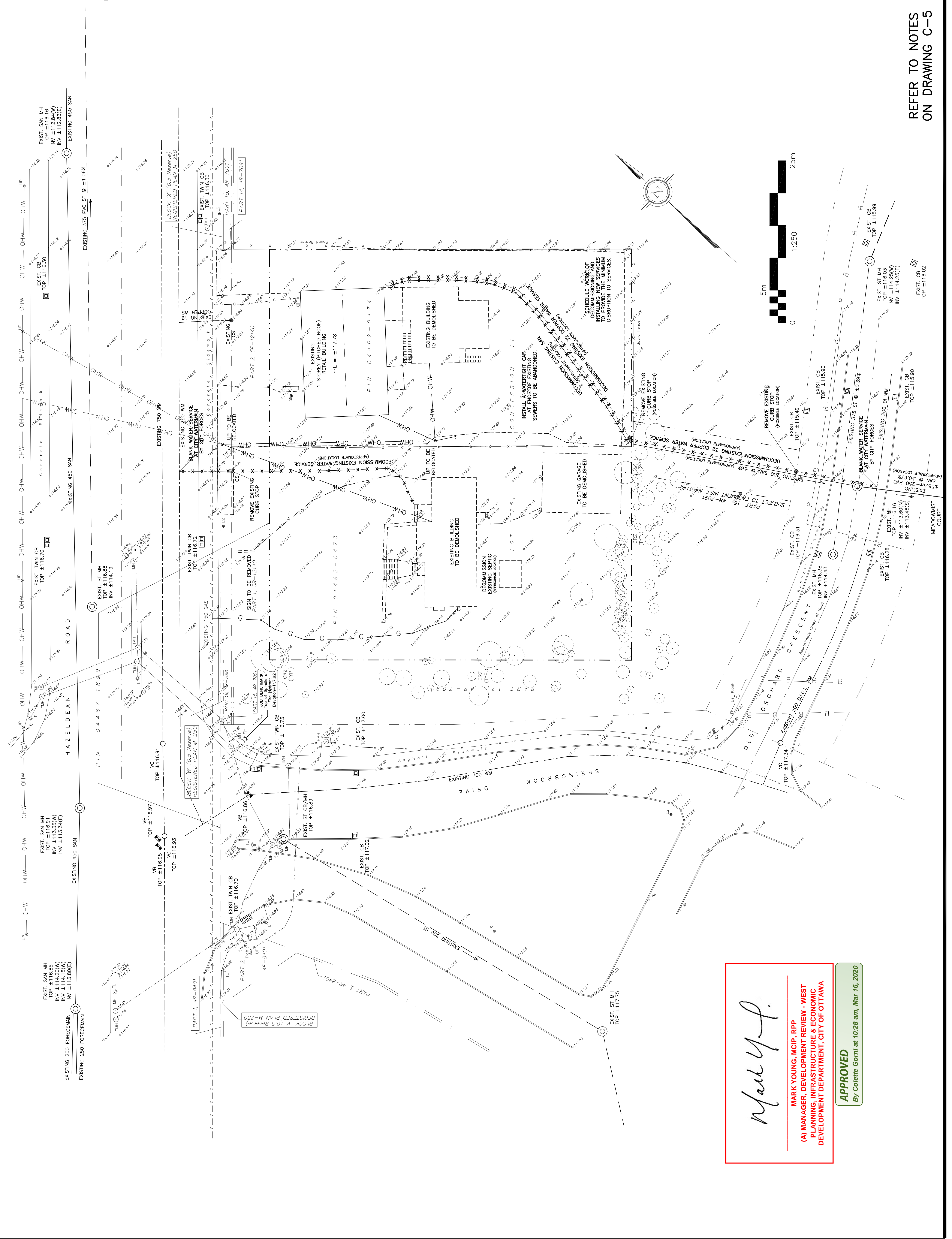
D. B. GRAY ENGINEERING INC.
 Surveying Management - Grading & Drainage - Storm & Sanitary Sewers - Pavement
 700 Long Point Circle
 Ottawa, Ontario
 416-461-8044
 613-425-8044
 d.gray@dbgrayengineering.com

**PROPOSED
 MIXED-USE BUILDING**
 5986-5992 HAZELDEAN RD
 OTTAWA, ONTARIO

**EXISTING CONDITIONS
 & SERVICES TO BE
 DECOMMISSIONED**

Engineer's Seal

 Drawn: D.B.G.
 Hor. Scale: 1:250
 Vert. Scale: 1:250
 Date: AUG 30-19
 Job No.: 19042
 Drawing No.: C-2
 of 6
 #18024
 NOT VALID UNLESS
 SIGNED & DATED



**REFER TO NOTES
 ON DRAWING C-5**

Mark Young
MARK YOUNG, MCIP, RPP
(A) MANAGER, DEVELOPMENT REVIEW - WEST
PLANNING, INFRASTRUCTURE & ECONOMIC
DEVELOPMENT DEPARTMENT, CITY OF OTTAWA

APPROVED
 By Colette Gormi at 10:28 am, Mar 16, 2020

D07-12-19-0152