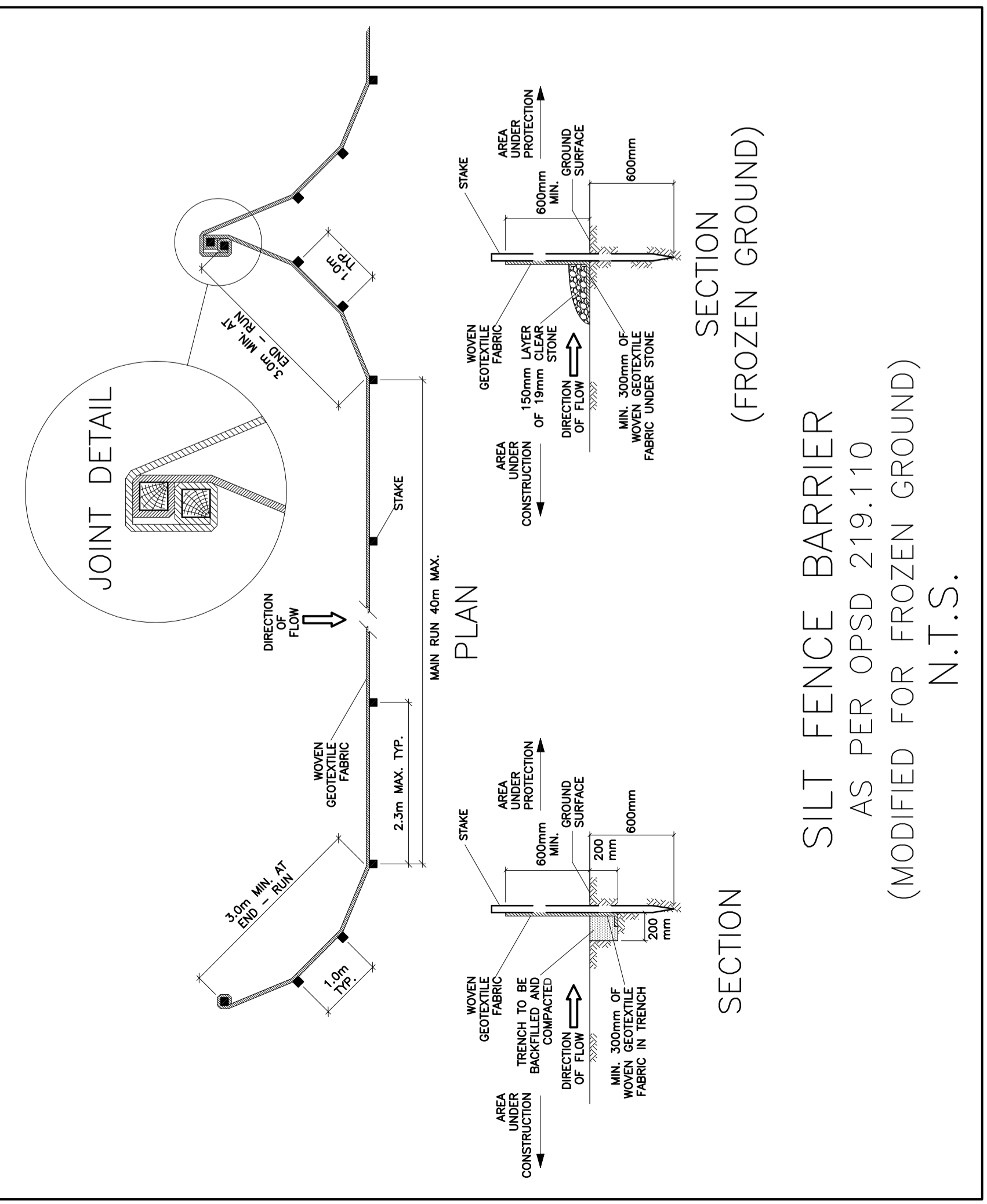


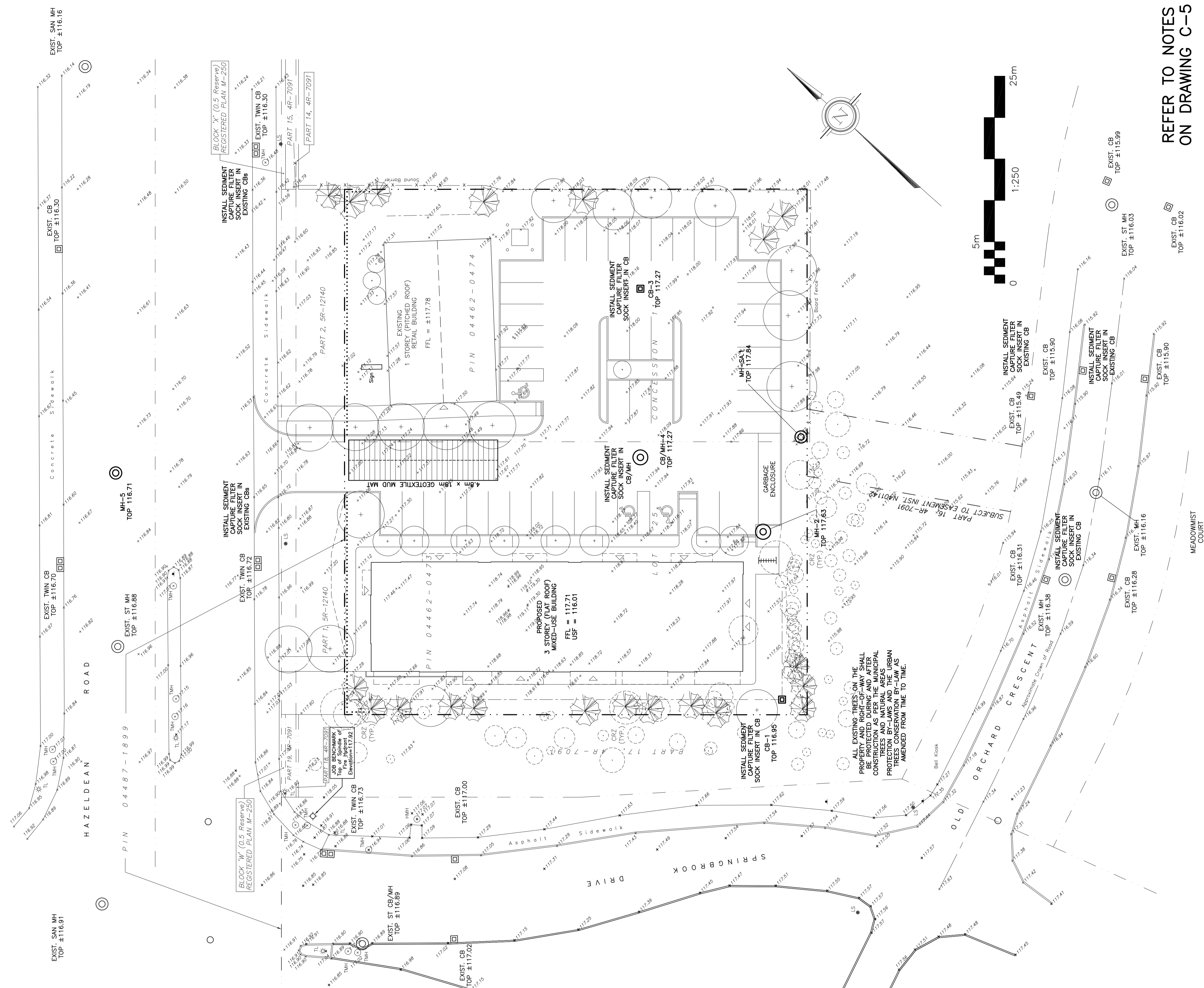
Mark Young

MARK YOUNG, MCIP, RPP
 (A) MANAGER, DEVELOPMENT REVIEW - WEST
 PLANNING, INFRASTRUCTURE & ECONOMIC
 DEVELOPMENT DEPARTMENT, CITY OF OTTAWA

APPROVED
 By Colette Gormi at 10:28 am, Mar 16, 2020

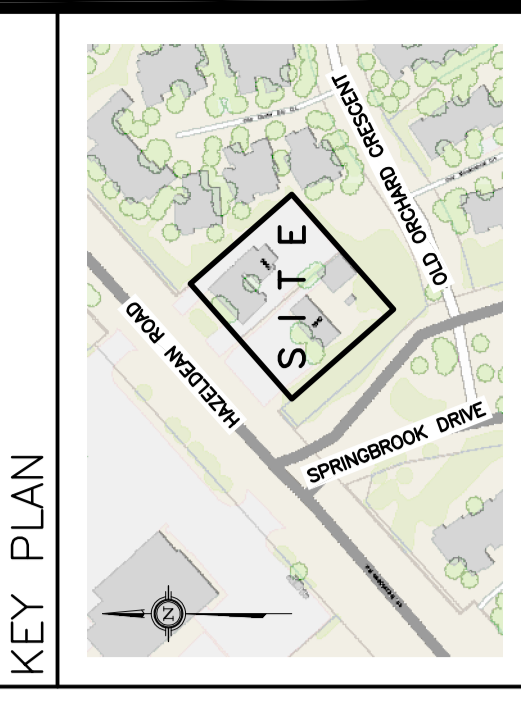


SILT FENCE BARRIER
 AS PER OPSD 219.110
 (MODIFIED FOR FROZEN GROUND)
 N.T.S.



DRAWING LEGEND

- CB CATCH BASIN
- MH MANHOLE
- CB/MH CATCH BASIN/MANHOLE
- SPL SPRINGLINE OF PIPE
- INV INVERT OF PIPE
- INV SUBIRIGINS IN CB
- SKN SANITARY SEWER
- ST STORM SEWER
- WS/WM WATER SERVICE/WATERMAIN
- CS CURB STOP & STANDPOST
- VB VALVE & VALVE BOX
- PH FIRE HYDRANT
- WM WATER METER
- RMW REMOTE WATER METER READOUT
- GE EXISTING GRADE ELEVATION
- PE PROPOSED GRADE ELEVATION
- 0.5% EXISTING SLOPE OF GRADE
- 0.5% PROPOSED SLOPE OF GRADE
- EMERGENCY OVERLAND FLOW
- TOP OF SLOPE
- T.O.S. TOP OF SLOPE
- B.O.S. BOTTOM OF SLOPE
- PROPERTY LINE
- SILT FENCE BARRIER
- D.C. 150mm CURB/DEPRESSED CURB
- LP LIGHT-DUTY PAVEMENT
- HP HEAVY-DUTY PAVEMENT
- CZ CRITICAL ROOT ZONE
- FFL FIRST FLOOR LEVEL
- USF TOP OF FOUNDATION
- USF UNDERSIDE OF FOOTING



No.	DATE	REVISION
5	FEB 20-20	RE-ISSUED FOR APPROVAL
4	JAN 13-20	RE-ISSUED FOR APPROVAL
3	NOV 22-19	RE-ISSUED FOR APPROVAL
2	SEP 5-19	ISSUED FOR APPROVAL
1	AUG 30-19	ISSUED FOR COORDINATION

D. B. GRAY ENGINEERING INC.
 Surveying Management - Grading & Drainage - Storm & Sanitary Sewers - Pavement
 700 Long Point Circle
 Ottawa, Ontario
 613-425-8044
 d.gray@dbgrayengineering.com

**PROPOSED
 MIXED-USE BUILDING**
 5986-5992 HAZELDEAN RD
 OTTAWA, ONTARIO

**EROSION & SEDIMENT
 CONTROL PLAN**

Drawing Title
 Drawing No. **C-4**
 of **6**
 #18024
 NOT VALID UNLESS
 SIGNED & DATED

**REFER TO NOTES
 ON DRAWING C-5**