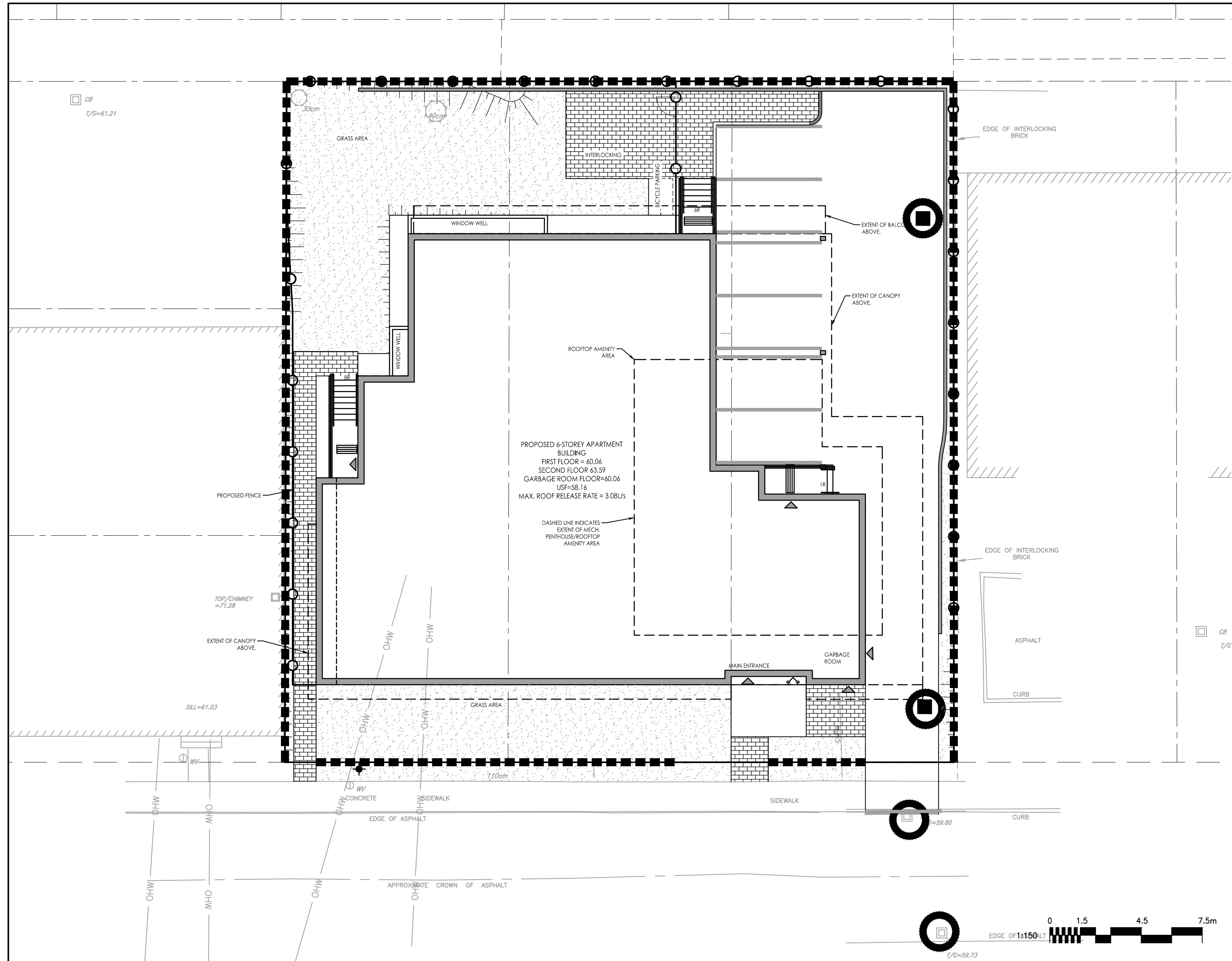


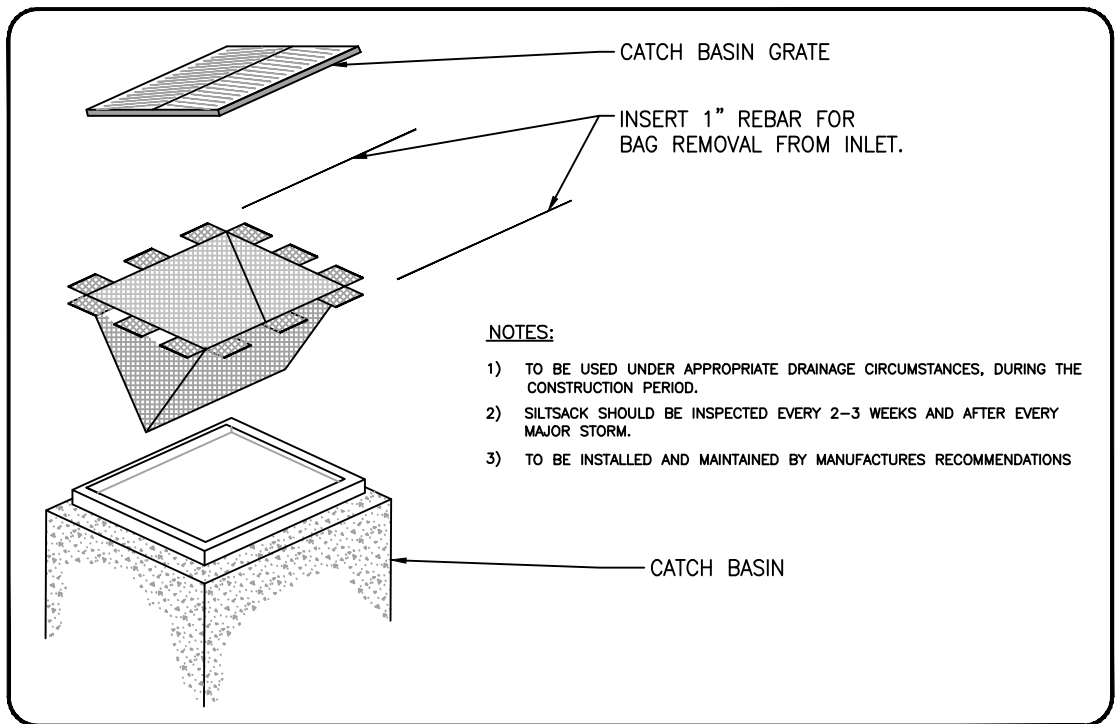
\\01\apps\1\444\1\444_138\Robinson Ave design drawings\160401443-DS.dwg
2020/02/05 8:53 AM by J. James
ORIGINAL SHEET - ARCH 0



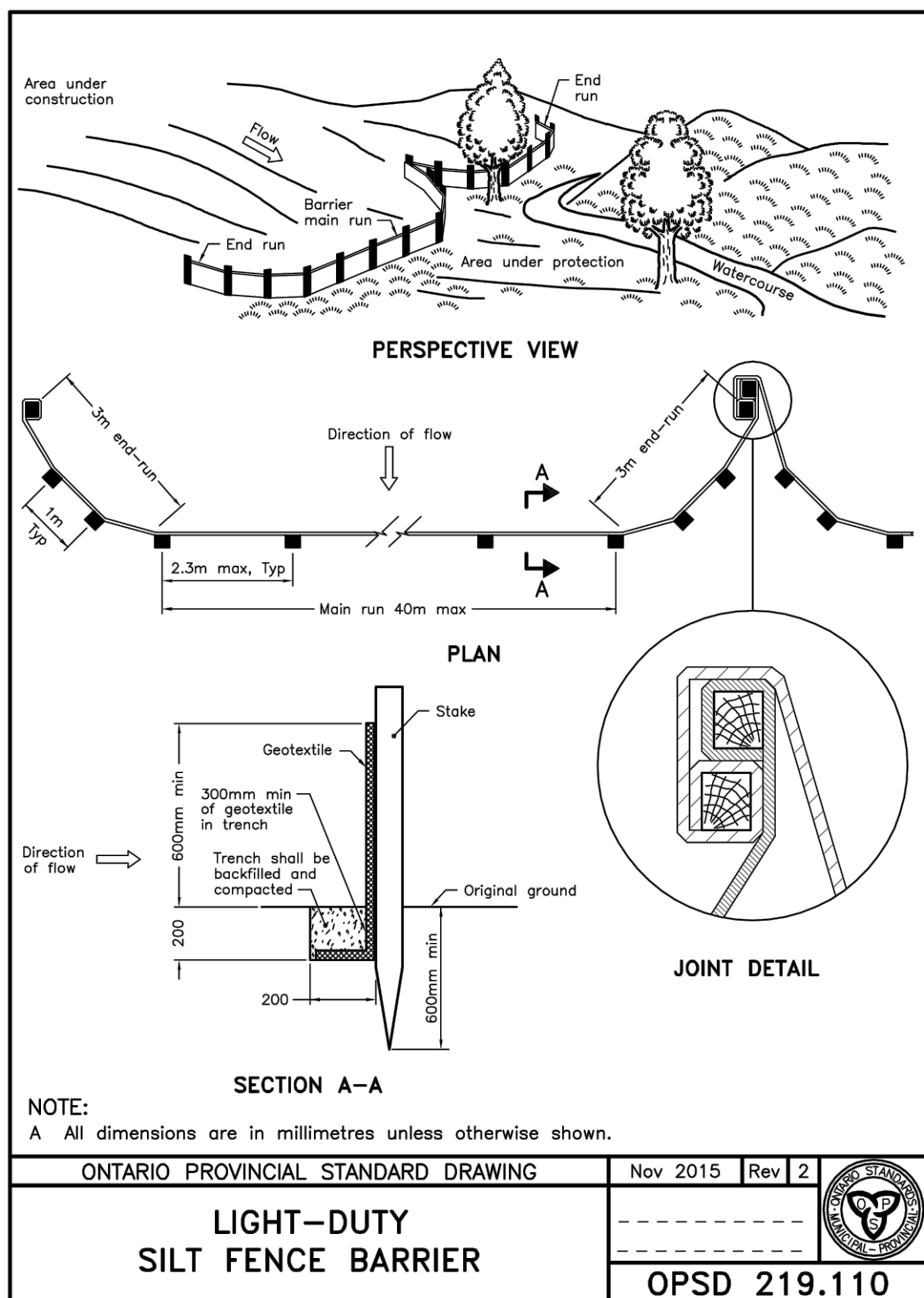
D.J.

DOUGLAS JAMES, MCIP, RPP
MANAGER, DEVELOPMENT REVIEW - CENTRAL
PLANNING, INFRASTRUCTURE & ECONOMIC
DEVELOPMENT DEPARTMENT, CITY OF OTTAWA

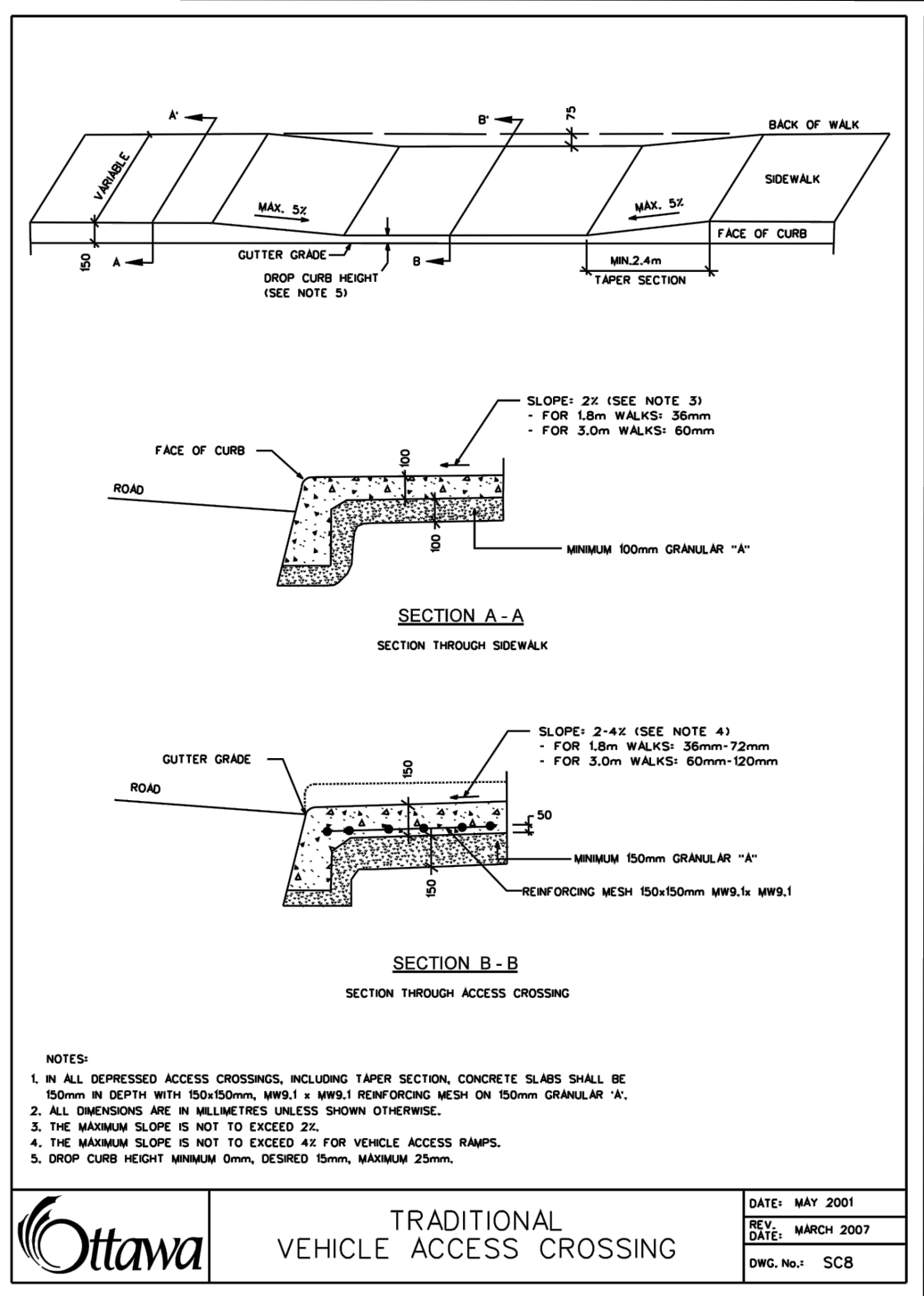
APPROVED
By Jamesdo at 1:00 pm, Feb 25, 2020



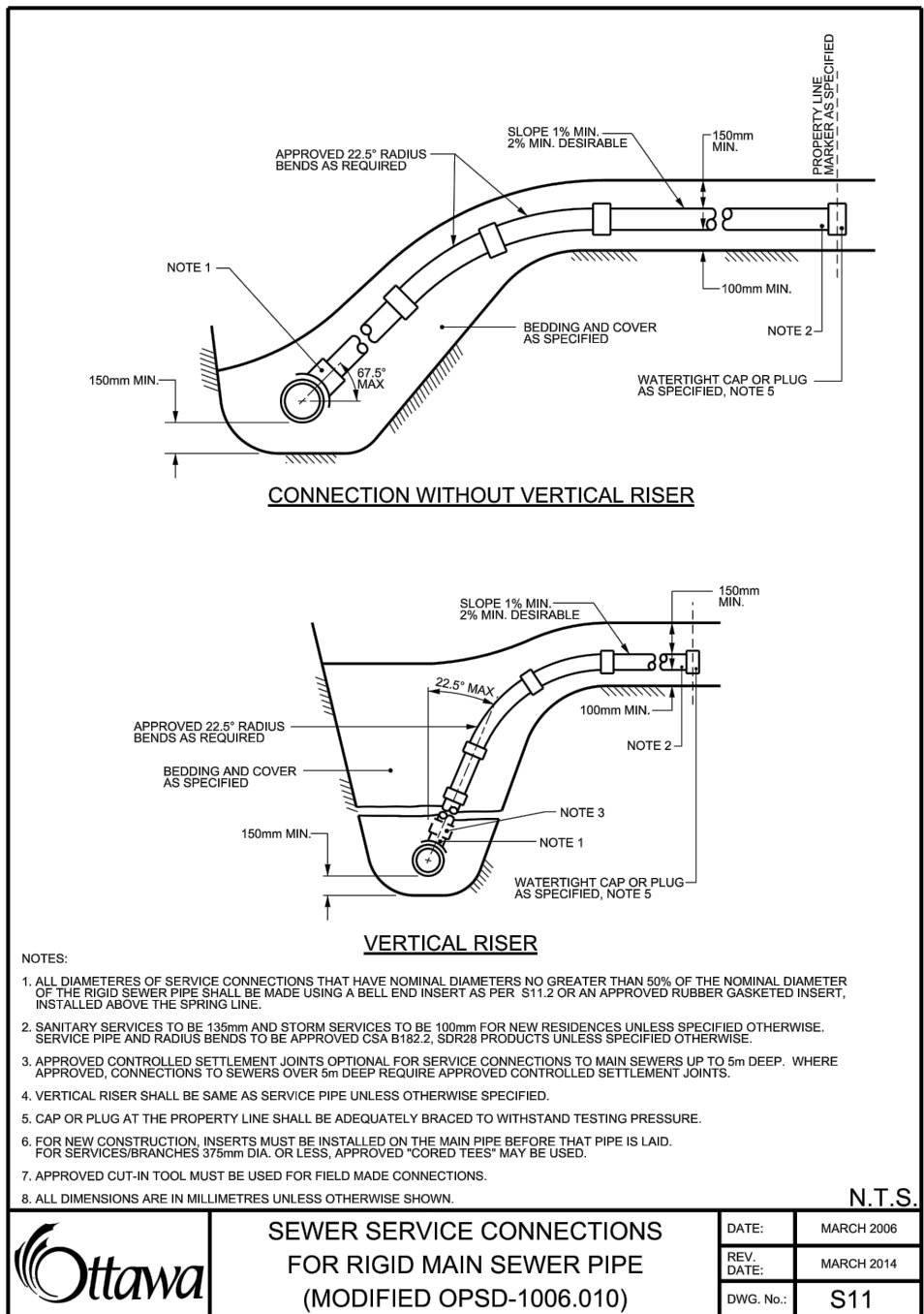
CATCH BASIN PROTECTION DETAIL: TERRAFIX SILTSACK
SCALE: N.T.S.



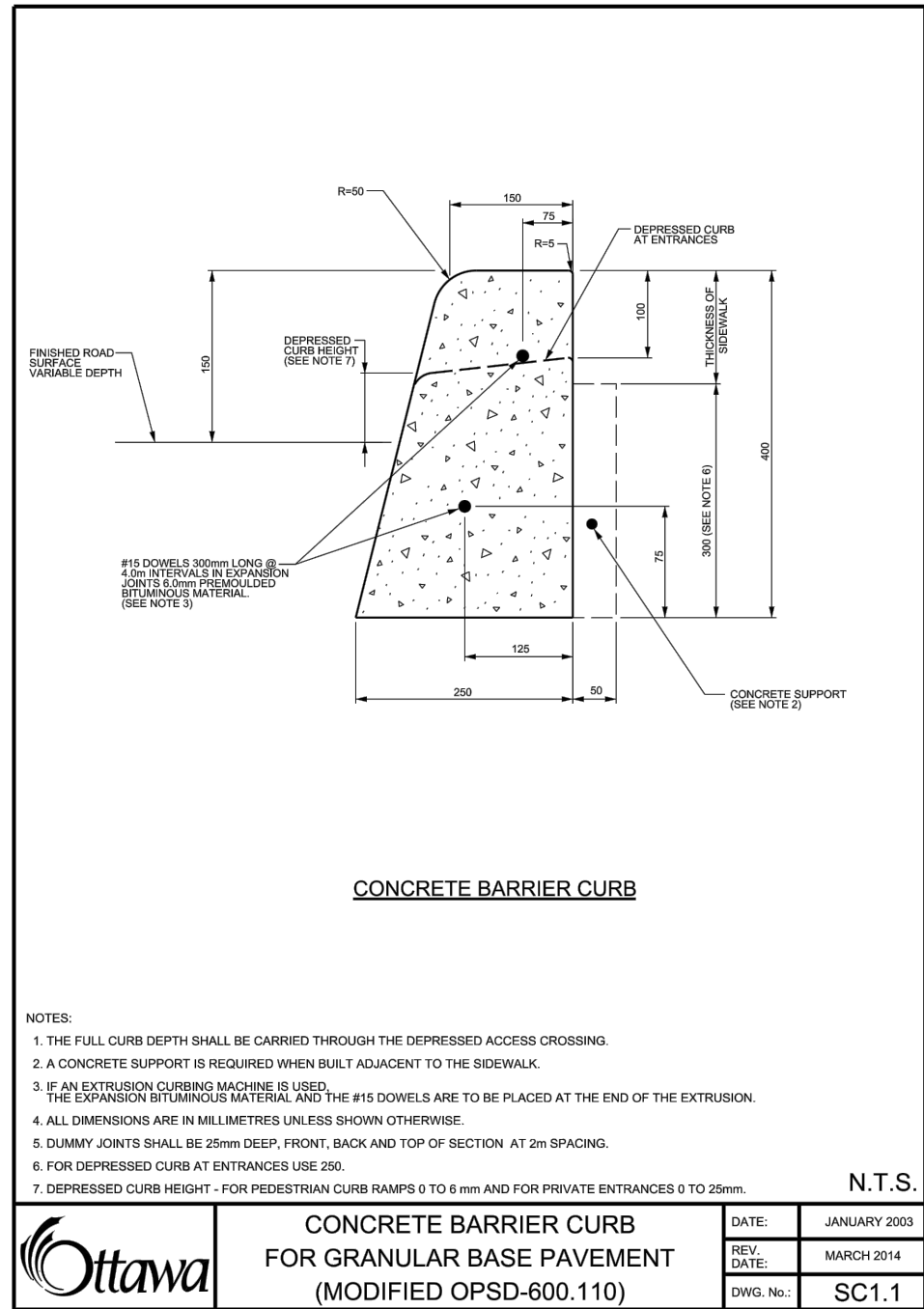
ONTARIO PROVINCIAL STANDARD DRAWING
LIGHT-DUTY
SILT FENCE BARRIER
Nov 2015 Rev 2
OPSD 219.110



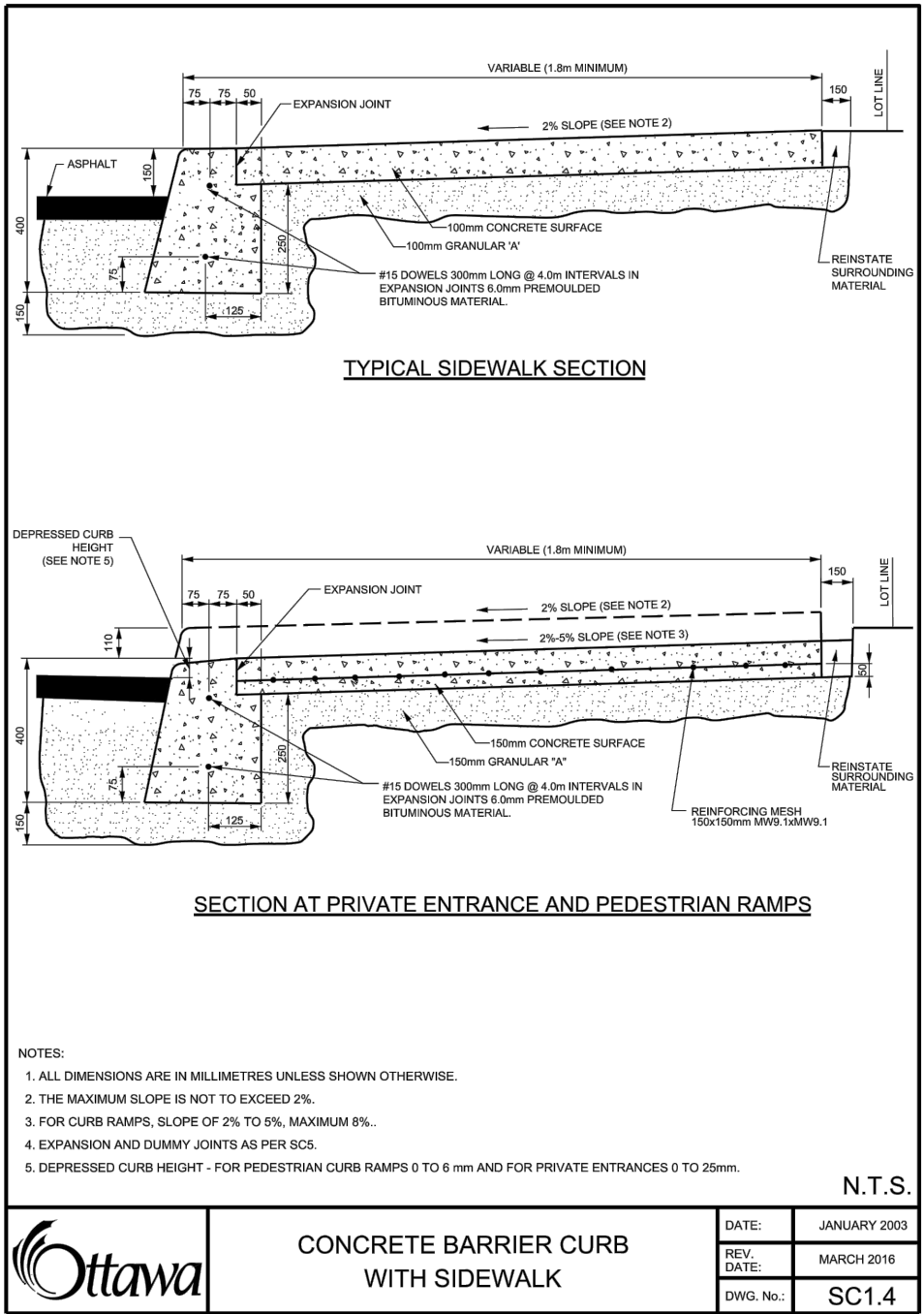
TRADITIONAL
VEHICLE ACCESS CROSSING
DATE: MAY 2001
REV: MARCH 2007
DWG. NO.: SCB



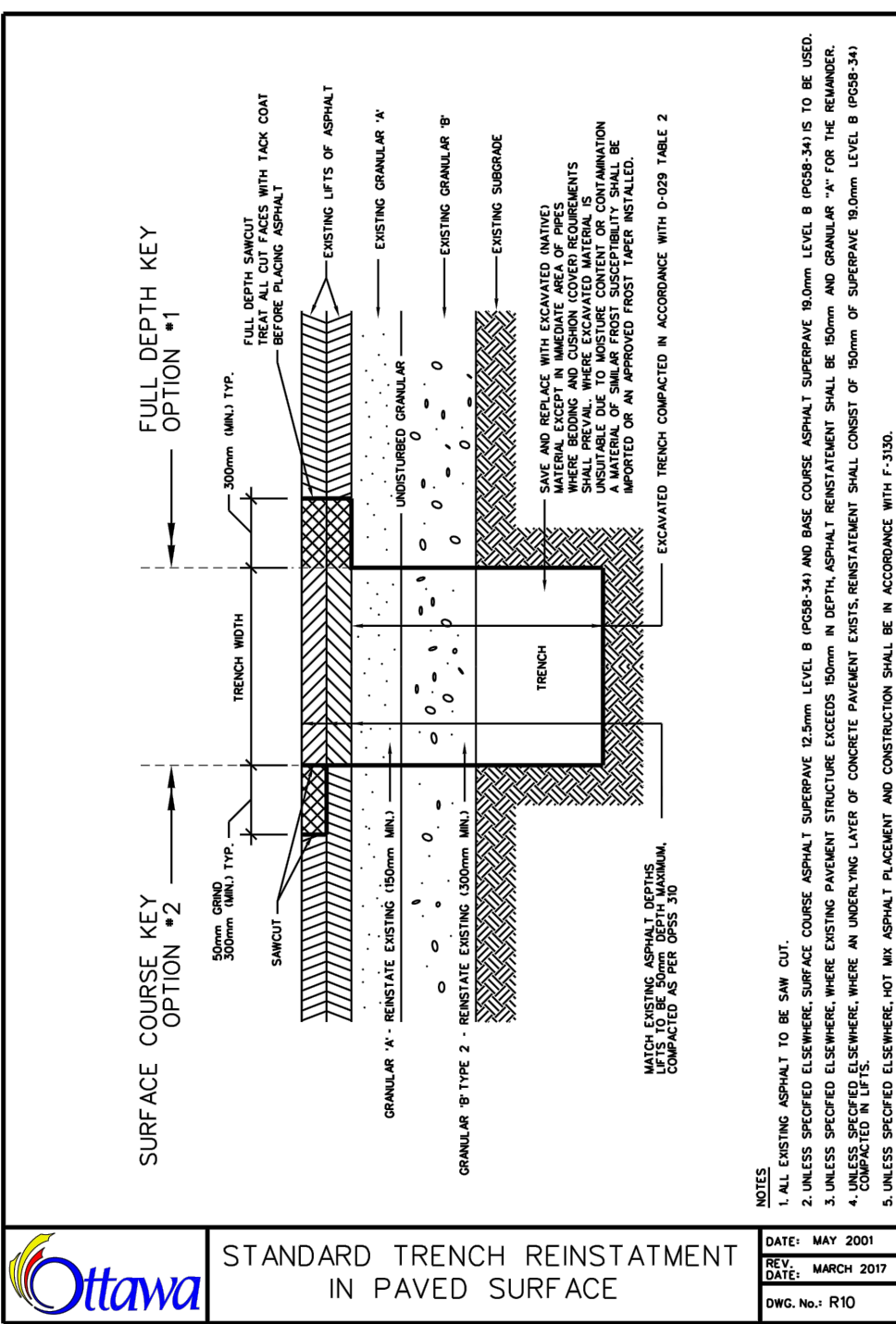
OTTAWA
SEWER SERVICE CONNECTIONS
FOR RIGID MAIN SEWER PIPE
(MODIFIED OPSD-1006.010)
DATE: MARCH 2003
REV: MARCH 2014
DWG. NO.: S11



OTTAWA
CONCRETE BARRIER CURB
FOR GRANULAR BASE PAVEMENT
(MODIFIED OPSD-600.110)
DATE: JANUARY 2003
REV: MARCH 2014
DWG. NO.: SC1.1



OTTAWA
CONCRETE BARRIER CURB
WITH SIDEWALK
DATE: JANUARY 2003
REV: MARCH 2016
DWG. NO.: SC1.4



OTTAWA
STANDARD TRENCH REINSTATEMENT
IN PAVED SURFACE
DATE: MAY 2001
REV: MARCH 2007
DWG. NO.: R10

APPROVED ☐ REFUSED ☐
THIS ____ DAY OF ____, 20__

DOUGLAS JAMES, MCIP, RPP, MANAGER
DEVELOPMENT REVIEW CENTRAL,
PLANNING, INFRASTRUCTURE AND ECONOMIC
DEVELOPMENT DEPARTMENT, CITY OF OTTAWA

Stantec
Stantec Consulting Ltd.
400 - 1331 Clyde Avenue
Ottawa ON
Tel. 613.722.4420
www.stantec.com

Copyright Reserved
The Contractor shall verify and be responsible for all dimensions. DO NOT scale the drawing - any errors or omissions shall be reported to Stantec without delay.
The Copyrights to all designs and drawings are the property of Stantec. Reproduction or use for any purpose other than that authorized by Stantec is forbidden.

Legend
PROPOSED SILT FENCE BOUNDARY AS PER OPSD 219.110
PROPOSED CATCH-BASIN PROTECTION

- Notes
- Best Management Practices
CONTRACTOR TO PROVIDE EROSION AND SEDIMENT CONTROLS (BEST MANAGEMENT PRACTICES) DURING CONSTRUCTION OF THIS PROJECT.
- EROSION MUST BE MINIMIZED AND SEDIMENTS MUST BE REMOVED FROM CONSTRUCTION SITE RUN-OFF IN ORDER TO PROTECT DOWNSTREAM AREAS. DURING ALL CONSTRUCTION, EROSION AND SEDIMENTATION SHOULD BE CONTROLLED BY THE FOLLOWING TECHNIQUES:
1. LIMIT THE EXTENT OF EXPOSED SOILS AT ANY GIVEN TIME.
 2. REVEGETATE EXPOSED AREAS AND SLOPES AS SOON AS POSSIBLE.
 3. MINIMIZE AREA TO BE CLEARED AND GRUBBED.
 4. PROTECT EXPOSED SLOPES WITH PLASTIC OR SYNTHETIC MULCHES.
 5. INSTALL CATCH BASIN INSERTS OR EQUIVALENT IN ALL PROPOSED CATCH BASINS AND CATCH BASIN MANHOLES AND IN ALL EXISTING CATCH BASINS THAT WILL RECEIVE RUN-OFF FROM THE SITE.
 6. A SILT FENCE SHALL BE INSTALLED AROUND THE PERIMETER OF ALL AND ANY STOCKPILES OF MATERIAL TO BE USED OR REMOVED FROM SITE. (LOCATION TO BE DETERMINED)
 7. A VISUAL INSPECTION SHALL BE DONE DAILY ON SEDIMENT CONTROL MEASURES AND CLEARED OF ANY ACCUMULATED SILT AS REQUIRED. THE DEPOSITS WILL BE DISPOSED OFF SITE AS PER THE REQUIREMENTS OF THE CONTRACT.
 8. SEDIMENT CONTROL BARRIERS MAY ONLY BE REMOVED TEMPORARILY WITH APPROVAL OF CONTRACT ADMINISTRATOR TO ACCOMMODATE CONSTRUCTION OPERATIONS. ALL AFFECTED BARRIERS MUST BE REINSTATEMENT AT NIGHT WHEN CONSTRUCTION IS COMPLETED. NO REMOVAL WILL OCCUR IF THERE IS A SIGNIFICANT RAINFALL EVENT ANTICIPATED (>10mm) UNLESS A NEW DEVICE HAS BEEN INSTALLED TO PROTECT EXISTING STORM AND SANITARY SEWER SYSTEMS, OR DOWNSTREAM WATERCOURSES.
 9. NO REFUELING OR CLEANING OF EQUIPMENT IS PERMITTED NEAR ANY EXISTING WATERWAY.
 10. CONTRACTOR SHALL REMOVE SEDIMENT CONTROL MEASURES WHEN, IN THE OPINION OF THE CONTRACT ADMINISTRATOR, THE MEASURE(S) IS NO LONGER REQUIRED. NO CONTROL MEASURES SHALL BE PERMANENTLY REMOVED WITHOUT PRIOR WRITTEN AUTHORIZATION FROM THE CONTRACT ADMINISTRATOR.
 11. THE CONTRACTOR SHALL PERIODICALLY, OR WHEN REQUESTED BY THE CONTRACT ADMINISTRATOR, CLEAN OUT ACCUMULATED SEDIMENTS AS REQUIRED.
 12. THE CONTRACTOR SHALL IMMEDIATELY REPORT TO THE ENGINEER ANY ACCIDENTAL DISCHARGES OF SEDIMENT MATERIAL INTO THE WATERCOURSE. APPROPRIATE RESPONSE MEASURES, INCLUDING ANY REPAIRS TO EXISTING CONTROL MEASURES OR THE IMPLEMENTATION OF ADDITIONAL CONTROL MEASURES, SHALL BE CARRIED OUT BY THE CONTRACTOR WITHOUT DELAY.
 13. STORMWATER SWALES TO BE COVERED WITH HYDRO-SEED AND MULCH.

5	REVISED SITE PLAN	JP	KK	20.01.28
4	REVISED AS PER CITY COMMENTS	WJ	KK	19.11.29
3	REVISED AS PER CITY COMMENTS	WJ	KK	19.11.22
2	REVISED AS PER CITY COMMENTS	WJ	KK	19.08.14
1	ISSUED FOR REVIEW	WJ	KK	18.11.07
Revision		By	Appd.	YY.MM.DD

File Name:	160401443-DS	JP	KK	SL	18.07.22
		Dwn.	Chkd.	Dsgn.	YY.MM.DD

Permit-Seal

Client/Project
ROBINSON VILLAGE III
LIMITED PARTNERSHIP
6 STOREY APARTMENT
134 ROBINSON AVENUE
OTTAWA, ONTARIO

Title
EROSION CONTROL PLAN
AND DETAIL SHEET

Project No.	Scale
160401443	AS SHOWN
Drawing No.	Sheet
	Revision

EC/DS-1 4 of 5 5
DWG 17856