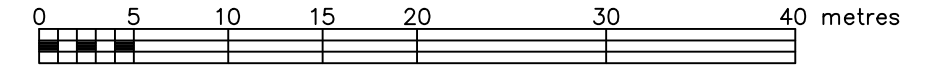


SKETCH SHOWING TOPOGRAPHIC INFORMATION FOR

A Portion of No. 7 Tristan Court Being PART OF LOT 27 CONCESSION A (RIDEAU FRONT) GEOGRAPHIC TOWNSHIP OF NEPEAN CITY OF OTTAWA

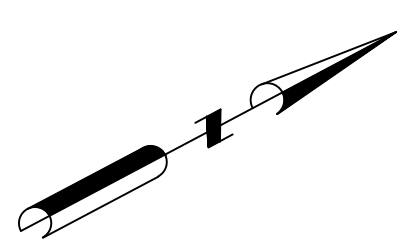
FARLEY, SMITH & DENIS SURVEYING LTD. 2019
Scale 1: 400



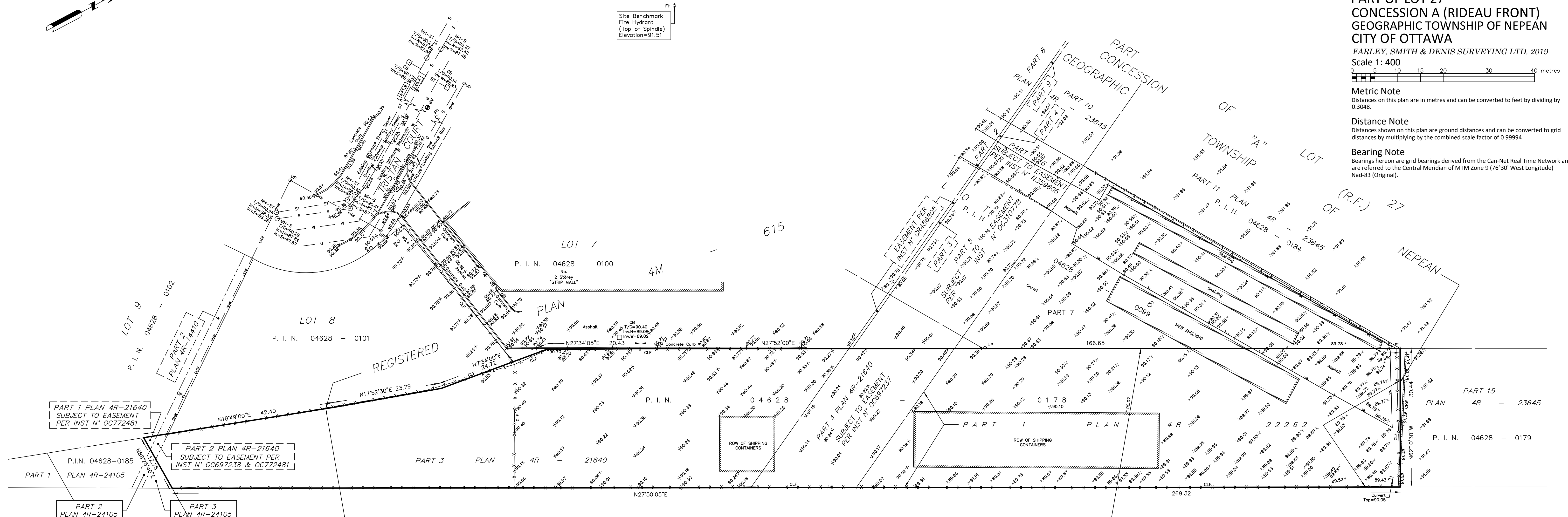
Metric Note
Distances on this plan are in metres and can be converted to feet by dividing by 0.3048.

Distance Note
Distances shown on this plan are ground distances and can be converted to grid distances by multiplying by the combined scale factor of 0.99994.

Bearing Note
Bearings hereon are grid bearings derived from the Can-Net Real Time Network and are referred to the Central Meridian of MTM Zone 9 (76°30' West Longitude) Nad-83 (Original).



Site Benchmark
Fire Hydrant
(Top of Spindle)
Elevation=91.51



PART 1 PLAN 4R-21640
SUBJECT TO EASEMENT
PER INST N° OC772481

PART 2 PLAN 4R-21640
SUBJECT TO EASEMENT PER
INST N° OC697238 & OC772481

PART 2
PLAN 4R-24105

PART 3
PLAN 4R-24105

Approximate location
Cory Avenue per
Registered Plan 388
Cancelled by Judge's
order INST. NP34772

Notes & Legend

Denotes		
○ MH-ST	Maintenance Hole (Storm)	
○ MH-S	Maintenance Hole (Sanitary)	
— ST	Underground Storm Sewer	
— S	Underground Sanitary Sewer	
— OHW	Overhead Wires	
○ OUP	Utility Pole	
○ AN	Anchor	
□ CB	Catch Basin	
◇ FH	Fire Hydrant	
T/G	Top of Grate	
Inv.	Invert	
CRW	Concrete Retaining Wall	
CLF	Chain Link Fence	
+65.00	Location of Elevations	
+65.00	Top of Concrete Curb/ Retaining Wall Elevation	
.	Deciduous Tree	

PART OF LOT 27, CONCESSION "A" (R.F.) GEOGRAPHIC TOWNSHIP OF NEPEAN

CANADIAN NATIONAL RAILWAY
P.I.N. 04628 - 0186

Elevation Notes

- Elevations shown are geoid and are referred to Geoid Datum CGVD-1928 :1978. (FSD Job No. 239-12)
- It is the responsibility of the user of this information to verify that the job benchmark has not been altered or disturbed and that its relative elevation and description agrees with the information shown on this drawing.

Utility Notes

- This drawing cannot be accepted as acknowledging all of the utilities and it will be the responsibility of the user to contact the respective utility authorities for confirmation.
- Only visible surface utilities were located.
- Underground utility data derived from City of Ottawa utility sheet reference: Sheet R-05-03, plan 11262 & plan 3158.
- Sanitary and storm sewer grades and inverts were derived from: Field measurement.
- A field location of underground plant by the pertinent utility authority is mandatory before any work involving breaking ground, probing, excavating etc.

Notes

- Caution: This is not a plan of survey and shall not be used except for the purpose indicated in the title block.
- Boundary information compiled from FSD office records.
- Field work was completed on the 2nd day of December, 2019.

FARLEY, SMITH & DENIS SURVEYING LTD.

ONTARIO LAND SURVEYORS
CANADA LAND SURVEYORS
190 COLONNADE ROAD, OTTAWA, ONTARIO K2E 7J5
TEL: (613) 727-8226 FAX: (613) 727-1826

WARNING NO PERSON MAY COPY, REPRODUCE, DISTRIBUTE OR ALTER THIS PLAN IN WHOLE OR IN PART WITHOUT THE WRITTEN PERMISSION OF FARLEY, SMITH & DENIS SURVEYING LTD. © FARLEY, SMITH & DENIS SURVEYING LTD., 2019.

FILE NO. :