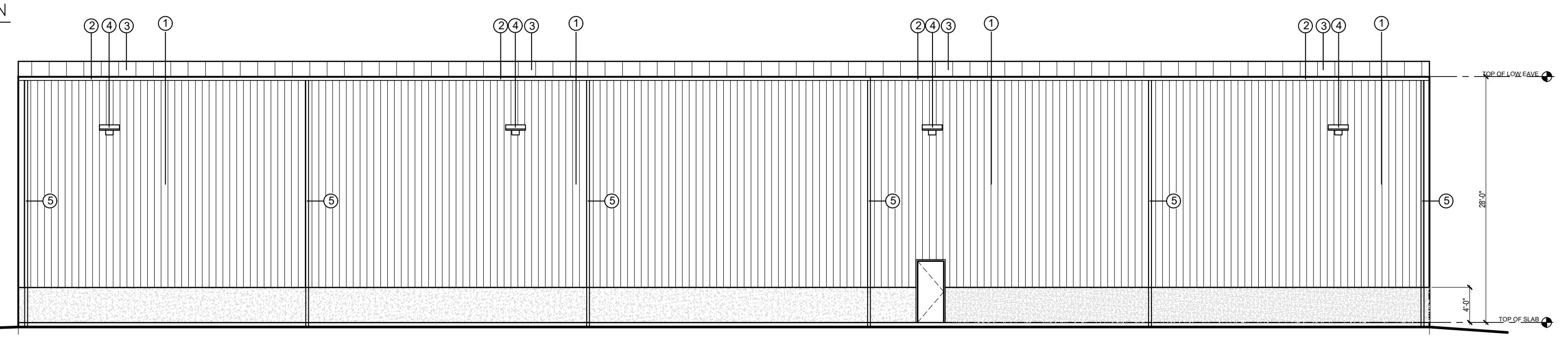
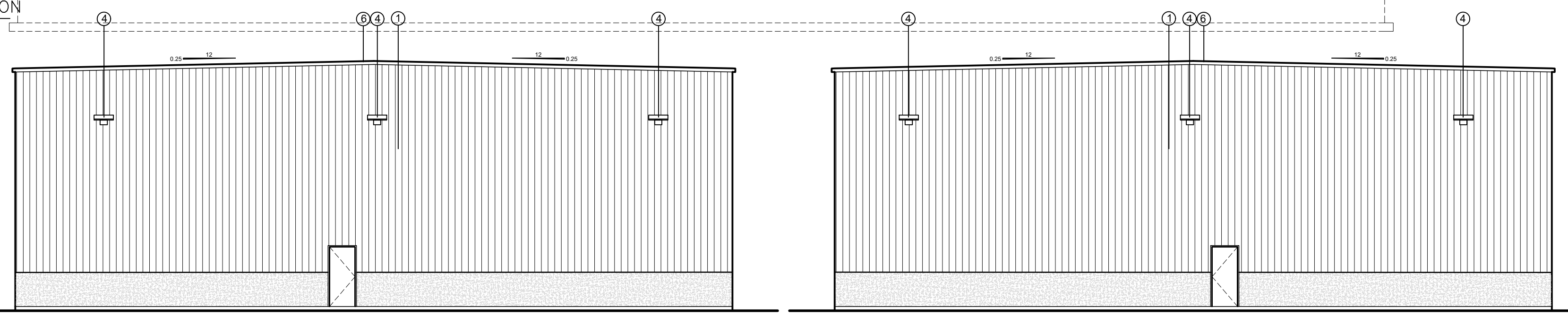


5 GROUND FLOOR PLAN
A1 SCALE: 3/32" = 1'-0"

- KEYNOTES:
- 1 26 GAUGE SIDING
 - 2 2ND GUTTER TRIM
 - 3 24 GAUGE STANDING SEAM ROOF PANELS
 - 4 LED WALL PACK FIXTURE ON PHOTOCELL SENSOR
 - 5 4" DOWNSPOUTS
 - 6 2ND EAVE TRIM

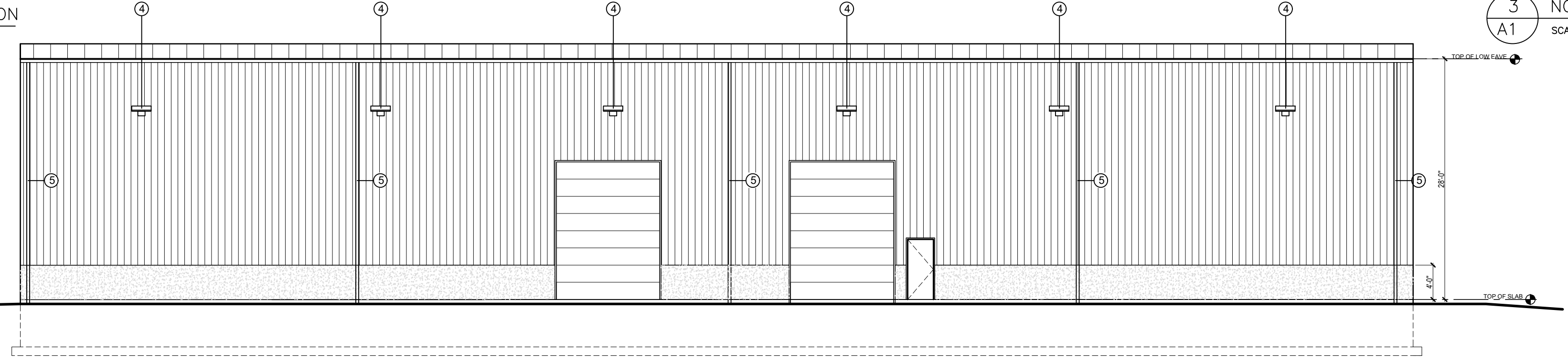


1 SOUTH EAST ELEVATION
A1 SCALE: 3/32" = 1'-0"



2 SOUTHWEST ELEVATION
A1 SCALE: 3/32" = 1'-0"

3 NORTH EAST ELEVATION
A1 SCALE: 3/32" = 1'-0"



4 NORTHWEST ELEVATION
A1 SCALE: 3/32" = 1'-0"

REVISION		
NO.	DATE	REVISION
1		
2		
3		
4		
5		

BBS
BUILDING A REPUTATION ON EXCELLENCE
BBS CONSTRUCTION (ONTARIO) LTD.
1805 WOODWARD DRIVE,
OTTAWA, ON K2C 0P9
TEL: 613-226-8830 FAX: 613-226-7709
www.bbsconstruction.ca



PROJECT:
MORIN BROS WAREHOUSE

DRAWING TITLE:
GROUND FLOOR PLAN
ELEVATIONS

PROJECT N°: 480-19

DRAWING NO.

SCALE: AS NOTED

DRAWN BY: MK

DATE: 1/21/2020

A1