

SEWER AND WATERMAIN CROSSING TABLE								COMMENTS
CROSSING	STM INV	STM OBV	SAN INV	SAN OBV	WTR TOP	WTR BTM		
▲	95.09(94.92)	96.59(96.76)	94.23	94.43	94.70	94.65	93.86	WATER SERVICE CROSSING BETWEEN SAN AND STORM SEWER
▲	95.05(94.88)	96.55(96.72)	94.36	94.61	93.66			WATERMAIN CROSSING UNDER SANITARY AND STORM SEWER
▲	95.04(94.87)	96.54(96.71)	94.45	94.70				SANITARY SEWER CROSSING STORM SEWER
▲	96.01	96.16	96.01	96.15	95.15	94.95		SANITARY AND STORM SERVICE CROSSING WATERMAIN
▲	95.98	96.13	94.49	94.74				STORM SERVICE CROSSING SANITARY SEWER
▲	95.61(95.53)	96.06(96.14)	96.30	96.44				SANITARY SERVICE CROSSING STORM SEWER
▲	95.58(95.50)	96.03(96.11)	94.48	94.73	93.98	93.83		WATER SERVICE CROSSING UNDER STORM AND SAN SEWER
▲	96.05	96.25	94.66	94.91	95.20	95.15		CB LEAD CROSSING SANITARY SEWER AND WATER SERVICE
▲	96.33	96.48	96.10	96.24	95.24	95.18		SANITARY AND STORM SERVICE CROSSING WATER SERVICE

\* BRACKETS DENOTE ADJUSTED VALUE WITH CONCRETE PIPE THICKNESS

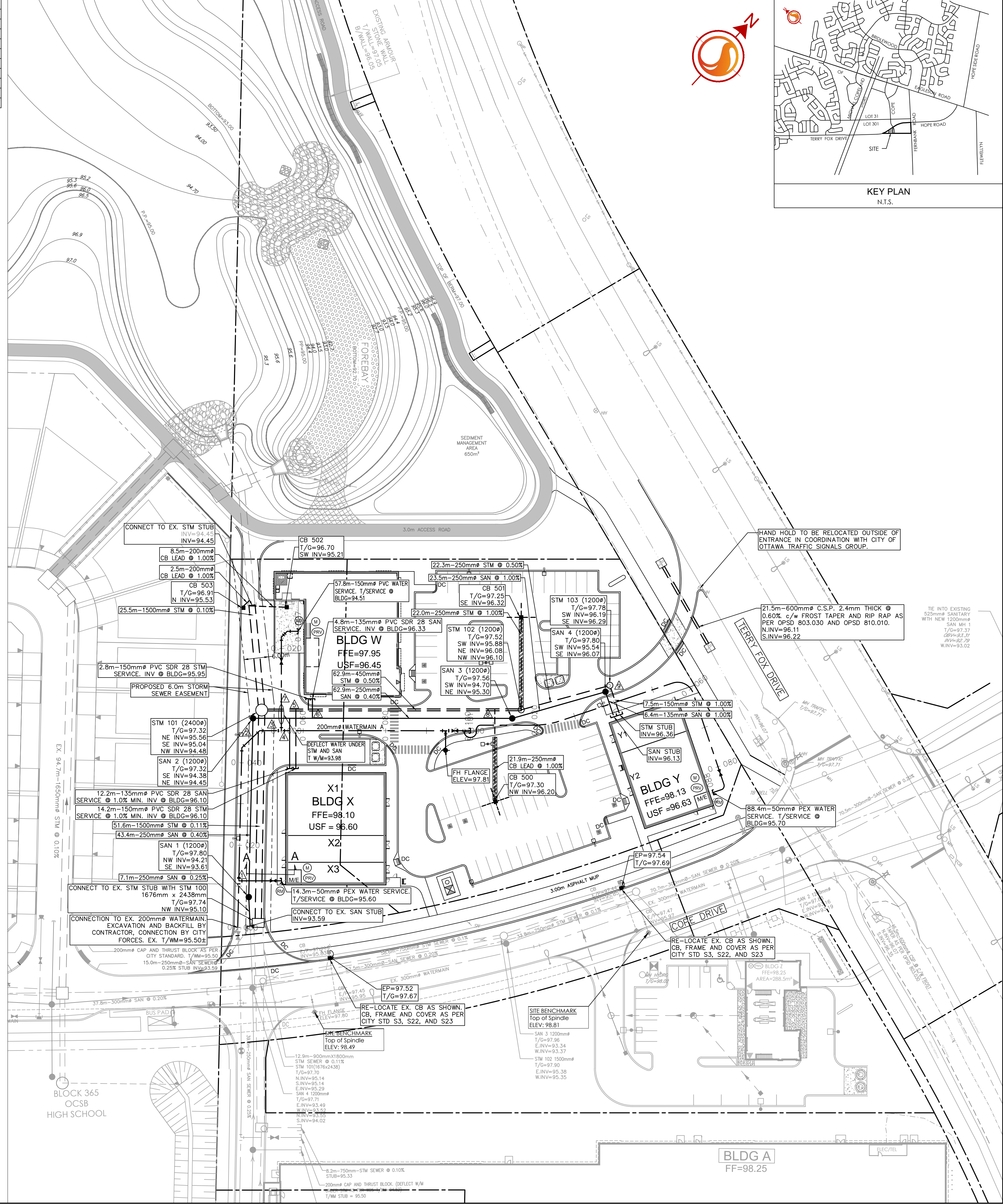
200mmØ WATERMAIN A			
STATION	FINISHED GRADE	TOP OF W/M	ITEM
0+000	97.82	95.504	CONNECT TO EX. 200mmØ WATERMAIN STUB
0+011.3	97.79	95.390	50mmØ TVS PEX TUBING BUILDING X WATER SERVICE
0+020	97.68	95.280	TOP OF PIPE
0+040.6	97.42	95.020	45° VERTICAL BEND
0+042.1	97.41	93.660	45° VERTICAL BEND
0+043.6	97.39	93.660	45° HORIZONTAL BEND
0+049.6	97.40	93.660	45° HORIZONTAL BEND
0+051.1	97.45	93.660	45° VERTICAL BEND
0+052.6	97.49	95.090	45° VERTICAL BEND
0+054.8	97.47	95.070	150mmØ WATER SERVICE TEE
0+060	97.61	95.210	TOP OF PIPE
0+080	97.80	95.400	TOP OF PIPE
0+094.6	97.69	95.290	150mmØ FIRE HYDRANT TEE
0+096.9	97.71	95.310	200mmØ VALVE AND VALVE BOX
0+099.1	97.68	95.280	50mmØ TVS PEX TUBING BUILDING Y WATER SERVICE
0+100.8	97.67	95.270	200mmØ CAP AND THRUST BLOCK

150mmØ WATER SERVICE BLDG W			
STATION	FINISHED GRADE	TOP OF W/M	ITEM
0+000	97.47	95.070	150mmØ TEE OFF 200mmØ
0+001	97.45	95.050	45mmØ VERTICAL BEND
0+002	97.42	93.980	45mmØ VERTICAL BEND
0+006.2	97.38	93.980	45mmØ VERTICAL BEND
0+007.2	97.36	94.960	45mmØ VERTICAL BEND
0+010	97.32	94.920	TOP OF PIPE
0+020	97.18	94.780	150mmØ VALVE AND VALVE BOX
0+030	96.97	94.570	45mmØ HORIZONTAL BEND
0+040	96.91	94.510	45mmØ HORIZONTAL BEND
0+054.5	96.91	94.510	150mmØ STANDPOST

50mmØ WATER SERVICE BLDG Y			
STATION	FINISHED GRADE	TOP OF W/M	ITEM
0+000	97.68	95.280	50mmØ TVS OFF 200mmØ
0+010	97.60	95.200	TOP OF PIPE
0+020	97.56	95.160	TOP OF PIPE
0+030	97.75	95.350	TOP OF PIPE
0+040	97.88	95.480	TOP OF PIPE
0+050	97.88	95.480	TOP OF PIPE
0+060	97.95	95.550	TOP OF PIPE
0+070	98.06	95.660	TOP OF PIPE
0+081.6	98.06	95.660	50mmØ STANDPOST
0+086.4	98.10	95.700	50mmØ CAP AND THRUST BLOCK

V:\016040\active\160401317\_CBD Ottawa design\drawing\160401317-08.dwg  
2024/02/28 10:53 AM BY: JMD, MMB

ORIGINAL SHEET - ARCH 0



Stantec Consulting Ltd.  
400 - 1331 Clyde Avenue  
Ottawa ON  
Tel. 613.722.4420  
www.stantec.com

Copyright Reserved

The Contractor shall verify and be responsible for all dimensions. DO NOT scale the drawing - any errors or omissions shall be reported to Stantec without delay.

The Copyrights to all designs and drawings are the property of Stantec. Reproduction or use for any purpose other than that authorized by Stantec is forbidden.

Legend

- PROPOSED WATERMAIN
- PROPOSED VALVE AND VALVE BOX
- PROPOSED VALVE CHAMBER
- PROPOSED REDUCER
- PROPOSED FIRE HYDRANT
- PROPOSED WATER METER
- PROPOSED REMOTE WATER METER
- PROPOSED PRESSURE REDUCING VALVE
- PROPOSED SANITARY SEWER
- PROPOSED STORM SEWER
- PROPOSED CATCHBASIN MANHOLE
- PROPOSED CATCHBASIN
- PROPOSED CATCHBASIN c/w 3.0m-150mmØ SUBDRAINS INSTALLED AT SUBGRADE ELEVATION WITH POSITIVE DRAINAGE INTO CATCHBASIN.
- EXISTING WATERMAIN
- EXISTING VALVE AND VALVE BOX
- EXISTING VALVE CHAMBER
- EXISTING REDUCER
- EXISTING FIRE HYDRANT
- EXISTING SANITARY SEWER
- EXISTING STORM SEWER
- EXISTING CATCHBASIN
- PROPOSED DEPRESSURE CURB LOCATIONS
- PROPOSED MOUNTABLE/BARRIER CURB LOCATION
- PROPOSED DOOR LOCATIONS
- PROPOSED TRANSFORMER LOCATIONS
- THERMAL INSULATION AS PER CITY STANDARD W22.0

Notes

3	REVISED AS PER CITY COMMENTS	MJS	KS	20.02.28
2	REVISED AS PER CITY COMMENTS	MJS	KS	20.01.17
1	ISSUED TO CITY FOR SPA	MJS	KS	19.11.18
Revision		By	Appd.	YY.MM.DD

File Name:	MJS	KS	MJS	19.09.09
	Down.	Chkd.	Dsgn.	YY.MM.DD

Permit-Seal

Client/Project

CALLOWAY REIT (Kanata) INC.  
SMARTCENTRES

COMMERCIAL DEVELOPMENT  
1140 TERRY FOX DRIVE  
OTTAWA, ON, CANADA

Title

SITE SERVICING PLAN

Project No.	Scale	Sheet	Revision
160401317	1:500		
Drawing No.	Sheet	Revision	