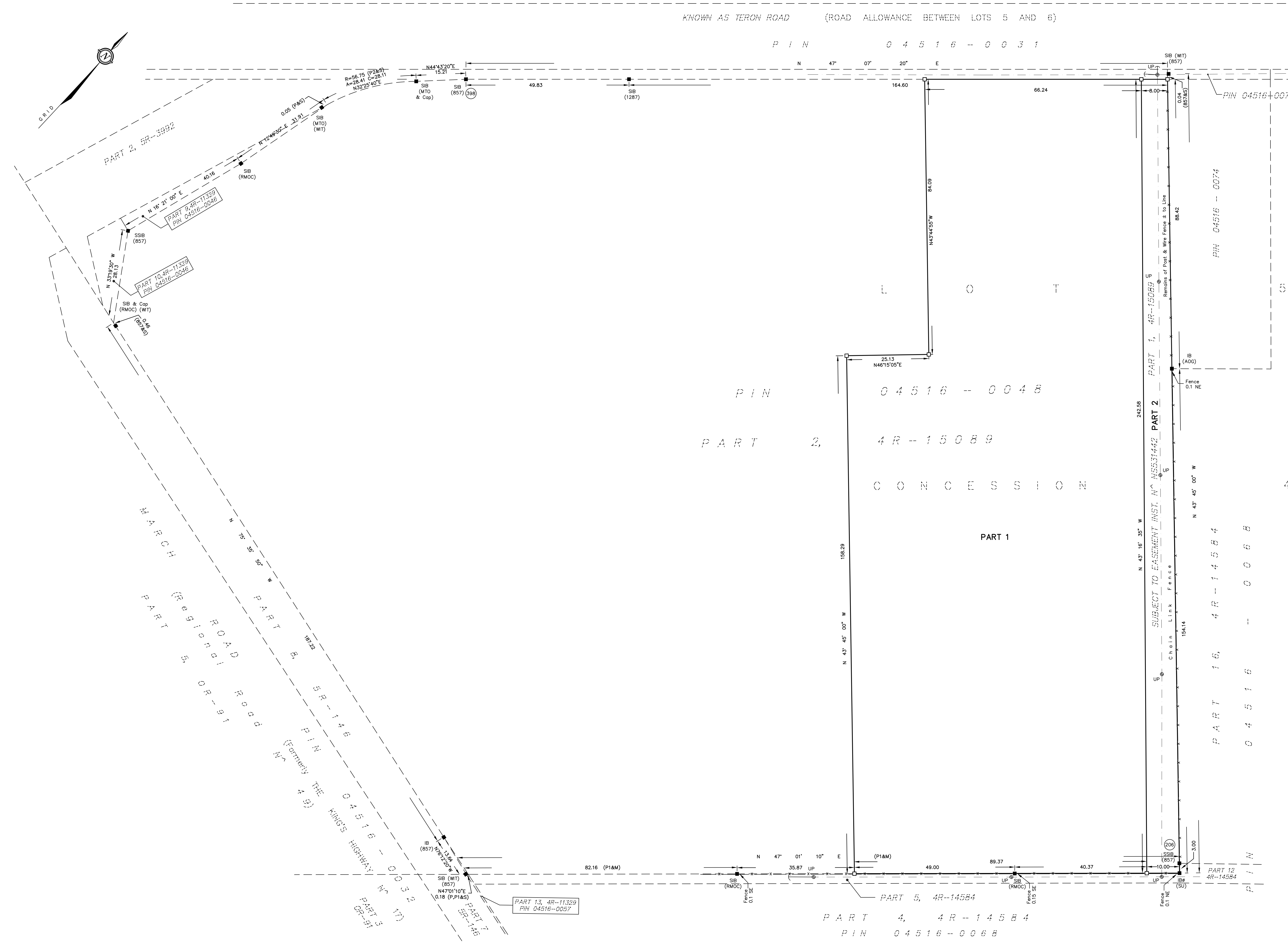


METRIC
DISTANCES AND COORDINATES SHOWN ON THIS PLAN ARE IN METRES
AND CAN BE CONVERTED TO FEET BY DIVIDING BY 0.3048

AREA (Ha.)	SCHEDULE		
	PART	LOT	CONCESSION
1.98	1	PART OF 5	4
0.22	2		PART OF 04516-0048

I REQUIRE THIS PLAN TO BE DEPOSITED UNDER THE LAND TITLES ACT.
DATE _____

PLAN 4R-
RECEIVED AND DEPOSITED
DATE _____
REPRESENTATIVE FOR THE LAND TITLES DIVISION OF OTTAWA - CARLETON (N° 4)
JOHN H. GUTRI, O.L.S.



PLAN OF SURVEY OF PART OF LOT 5 CONCESSION 4 GEOGRAPHIC TOWNSHIP OF MARCH CITY OF OTTAWA
SCALE 1 : 500
FAIRHALL, MOFFATT & WOODLAND LIMITED
ONTARIO LAND SURVEYORS

COORDINATES WERE DERIVED FROM REAL TIME NETWORK OBSERVATIONS (SMARTNET) NAD 83, NAD 83 ORIGINAL. COORDINATES HAVE BEEN DETERMINED TO AN URBAN ACCURACY IN ACCORDANCE WITH SECTION 14(2) OF O.REG 216/10.

POINT ID	NORTHING	EASTING
*	*	*
*	*	*
*	*	*
*	*	*

COORDINATES CANNOT IN THEMSELVES BE USED TO RE-ESTABLISH CORNERS OR BOUNDARIES SHOWN ON THIS PLAN.

NOTES
1. BEARINGS ARE GRID, DERIVED FROM NCC HORIZONTAL CONTROL MONUMENTS 019680013 (N 5022698.543, E 352904.084) AND 01970014 (N 5022197.569, E 352075.573) AND ARE REFERRED TO THE CENTRAL MERIDIAN 76° 30' W LONGITUDE, ZONE 9 OF THE 3° T.M. ONTARIO COORDINATE SYSTEM (NAD 83).
2. DISTANCES ARE GROUND AND CAN BE CONVERTED TO GRID BY MULTIPLYING BY THE COMBINED SCALE FACTOR 0.999916.

LEGEND

□	SURVEY MONUMENT SET
■	SURVEY MONUMENT FOUND
IB	IRON BAR
SIB	STANDARD IRON BAR
SSIB	SHORT STANDARD IRON BAR
⊙	ROUND
(P)	PLAN 4R-11329
(P1)	PLAN 4R-14584
(P2)	PLAN 5R-3992
(MTO)	(MTO PLAN 1648-41)
(S)	SET
(M)	MEASURED
(857)	FAIRHALL, MOFFATT & WOODLAND LIMITED, O.L.S.
(1287)	FARLEY, SMITH & MURRAY SURVEYING LTD., O.L.S.
(AOG)	ANNIS, O'SULLIVAN, VOLLEBECK LIMITED, O.L.S.
(RMOC)	REGIONAL MUNICIPALITY OF OTTAWA-CARLETON
(NCC)	NATIONAL CAPITAL COMMISSION
(MTO)	MINISTRY OF TRANSPORTATION OF ONTARIO
(SU)	SOURCE UNKNOWN
NT	NOT TANGENTIAL
N	NORTH
SE	SOUTHEAST
NE	NORTHEAST
NW	NORTHWEST
---	OVERHEAD UTILITY WIRES
↑	GUY WIRE & ANCHOR

SURVEYOR'S CERTIFICATE
I CERTIFY THAT:
1. THIS SURVEY AND PLAN ARE CORRECT AND IN ACCORDANCE WITH THE SURVEYS ACT, THE SURVEYORS ACT, THE LAND TITLES ACT AND THE REGULATIONS MADE UNDER THEM.
2. THE SURVEY WAS COMPLETED ON _____

DATE _____ JOHN H. GUTRI
ONTARIO LAND SURVEYOR

Fairhall Moffatt & Woodland ONTARIO LAND SURVEYORS Surveying and Land Information Services 100-620 TERRY FOX DRIVE, KANATA, ONTARIO K2K 4E8 TEL: (613) 591-2580 FAX: (613) 591-1495 www.fmw.on.ca	JOB No. 224800 E 351631, N 5021902 REFERENCE No. 210 - 4 MARCH S1:U085J24800/0467 2248_rp.dwg (kg)
---	--