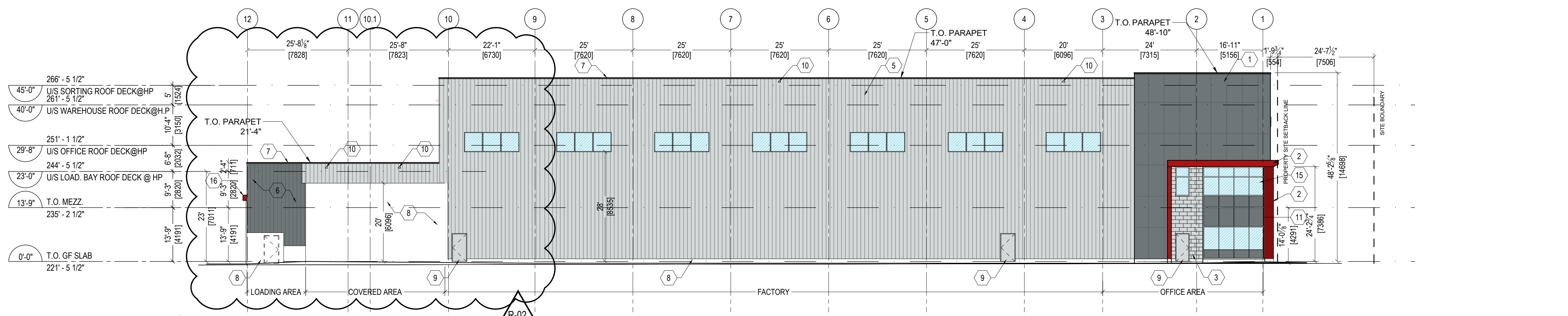
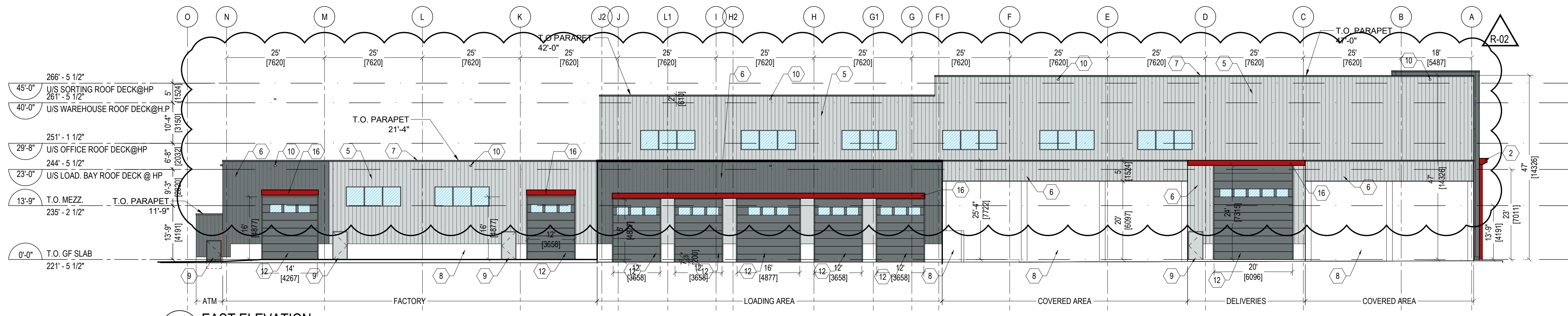


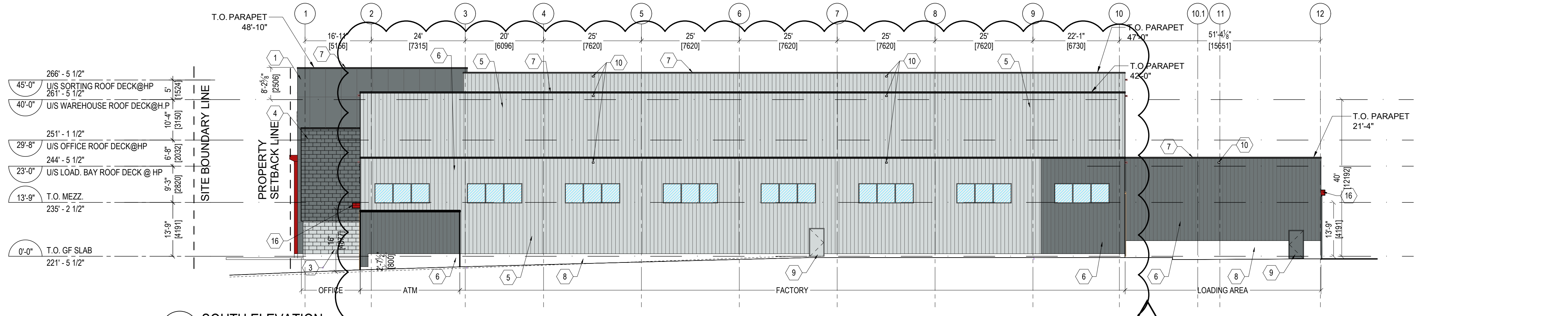
1 WEST ELEVATION
A3.01 SCALE: 1/16" = 1'-0"



2 NORTH ELEVATION
A3.01 SCALE: 1/16" = 1'-0"



3 EAST ELEVATION
A3.01 SCALE: 1/16" = 1'-0"



4 SOUTH ELEVATION
A3.01 SCALE: 1/16" = 1'-0"

- LEGEND**
- ALUMINUM COMPOSITE PANEL, VICWEST COLOUR DARK GREY-WEATHERED COLOUR TO MATCH MP SOLID FLUOROPOLYMER PVDF COLOURS-KYNAR 500/HYLAR 5000 ZINC GREY
 - ALUMINUM COMPOSITE PANEL, VICWEST COLOUR SOLID TRC RED 4-TRC-30
 - METAL SIDING 12" X 24" BLOCK PROFILE 3X30 PANEL LENGTH W/ NO VISIBLE SCREWS COLOUR TO MATCH MP SOLID FLUOROPOLYMER PVDF COLOURS-KYNAR 500/HYLAR 5000 ZINC GREY
 - METAL SIDING 12" X 24" BLOCK PROFILE 3X30 PANEL LENGTH W/ NO VISIBLE SCREWS COLOUR TO MATCH MP SOLID FLUOROPOLYMER PVDF COLOURS-KYNAR 500/HYLAR 5000 ZINC GREY
 - PRE-MANUFACTURED INSULATED METAL PANEL SYSTEM SHADOWLINE VERTICAL ORIENTATION COLOUR: SOLID FLUOROPOLYMER PVDF COLOURS-KYNAR 500/HYLAR 5000 ZINC GREY
 - PRE-MANUFACTURED INSULATED METAL PANEL SYSTEM SHADOWLINE VERTICAL ORIENTATION COLOUR: SOLID FLUOROPOLYMER PVDF COLOURS-KYNAR 500/HYLAR 5000 ZINC GREY
 - PRE-FINISHED METAL FLASHING C/W DRIP EDGE, COLOUR BLACK
 - POURED CONCRETE
 - INSULATED HOLLOW METAL DOOR, COLOUR TO ADJACENT WALL CLADDING
 - PREFIN METAL SCUPPER, COLOUR BLACK
 - SPANDREL GLAZING C/W INSULATED BACK PANEL COLOUR BLACK
 - HIGH SPEED ROLL-UP OVERHEAD DOOR C/W MOTOR, TRACK AND HARDWARE
 - RESERVED
 - INTERNALLY LIT SIGNAGE, PROVIDE BLOCKING AND POWER. C.C. TO PROVIDE SHOP DRAWINGS.
 - CURTAIN WALL GLAZING IN THERMALLY BROKEN ANODIZED ALUMINUM STOREFRONT FRAMING SYSTEM. FRAME COLOUR BLACK
 - RED METAL CANOPY COLOUR RED TO MATCH ALUMINUM COMPOSITE PANEL VICWEST COLOUR SOLID TRC RED 4-TRC-30.

- SYMBOLS LEGEND**
- A GRID LINE & DIMENSIONS REFER TO FLOOR PLANS
 - WINDOW TYPE NUMBER REFER TO WINDOW SCHEDULE
 - 1 FINISH MATERIAL TAG

1. Contractor must verify all job dimensions, all drawings, details, specifications and report any discrepancies to owners before proceeding with work.
2. All drawings and specifications are instruments of service and the property of the architects which must be returned at the completion of the work, and may not be reproduced without their written permission.

ref	description	date
01	ISSUED FOR SPC RESPONSE	2020-01-17

revisions

ONTARIO ASSOCIATION OF ARCHITECTS
NICHOLAS CARAGIANIS
LICENCE 5057

DESIGN ARCHITECT NICHOLAS CARAGIANIS INC.
137 Pamela St. Ottawa, ON. K1S 3K9
tel: (613) 237-6801 fax: (613) 237-8289
email: shickey@ncarchitect.ca

STRUCTURAL ENGINEER LEEKOR
359 Kent, Suite 501, Ottawa, ON. K2P 0R6
tel: (613) 234-0886 fax: (613) 233-4413
email: lee@leekor.com

MECHANICAL/ELECTRICAL MIRITON
1716 Woodward Drive, Suite 200, Ottawa, ON. K2C 0P8
tel: (613) 722-5486
email: johnnie.chahwan@minton.com

CIVIL ENGINEER NOVATECH
240 Michael Cowpland Drive, Suite 200, Ottawa, ON. K2M 1P6
tel: (613) 254-9643 fax: (613) 254-5867
email: f.thauvette@novatech-eng.com

PLANNING & URBAN DESIGN NOVATECH
240 Michael Cowpland Drive, Suite 200, Ottawa, ON. K2M 1P6
tel: (613) 254-9643 fax: (613) 254-5867
email: t.gilchrist@novatech-eng.com

OWNER: AMERICAN IRON & METAL
9100, BOUL. HENRI-BOURASSA EST
MONTREAL, QUEBEC H1E 2S4
tel: 514-494-2000 aim-global.com

TRUE NORTH **PROJECT NORTH**

ARCHITECT nicholas caragianis architect inc. 137 Pamela Street, Ottawa, ON. K1S 3K9
t: 613 237 6801
f: 613 237 8989
e: info@ncarchitect.ca
www.ncarchitect.ca

PROJECT & LOCATION METAL RECYCLING PLANT
2555 SHEFFIELD ROAD
OTTAWA, ONT.

OFFICE FILE NUMBER 19023

TITLE OF DRAWING BUILDING-A ELEVATIONS

SCALE: 1/16" = 1'-0" **DRAWING #** A3.01

DATE: MARCH 2019

DRAWN BY: GL, SH, CC, AA