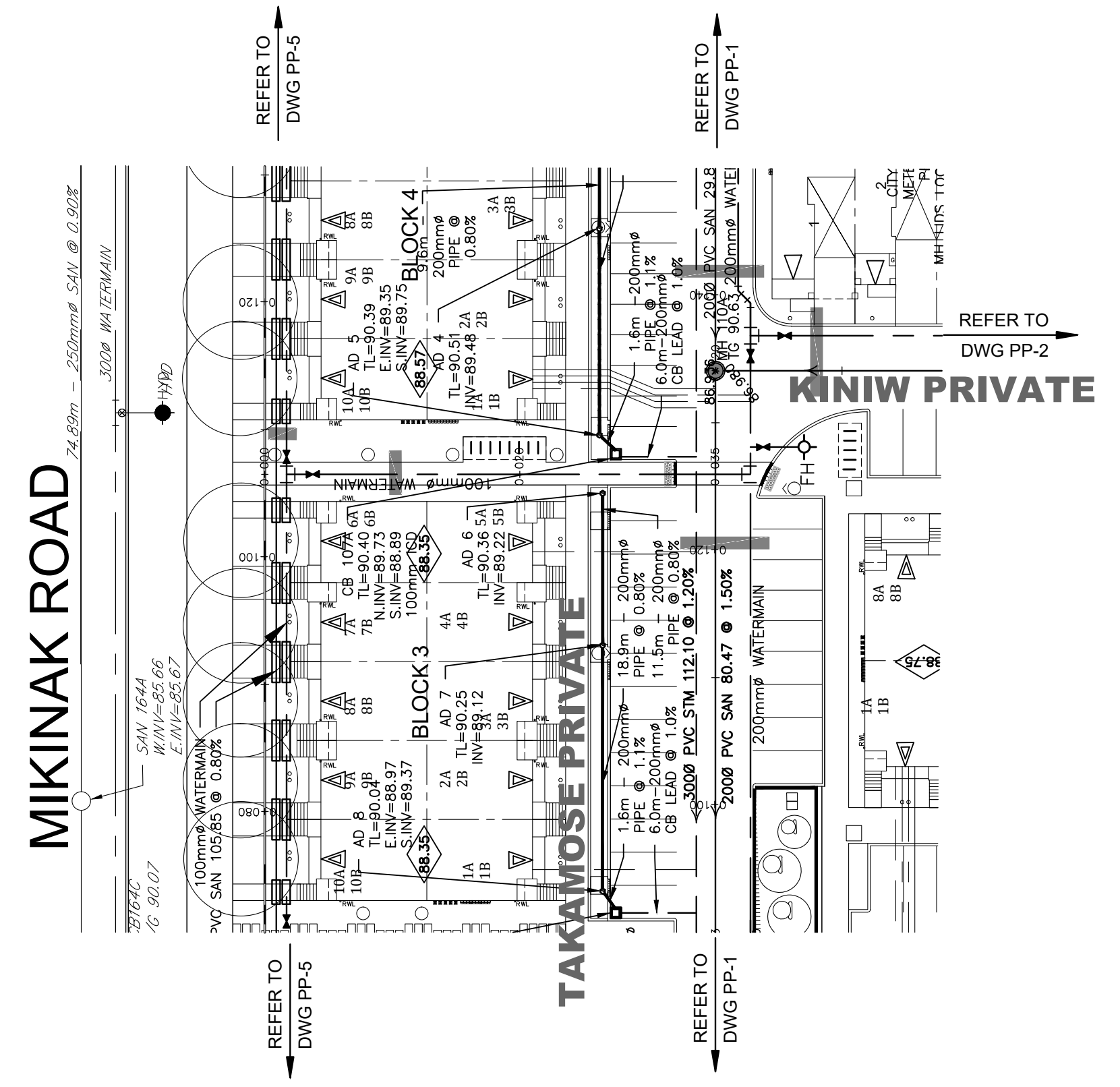
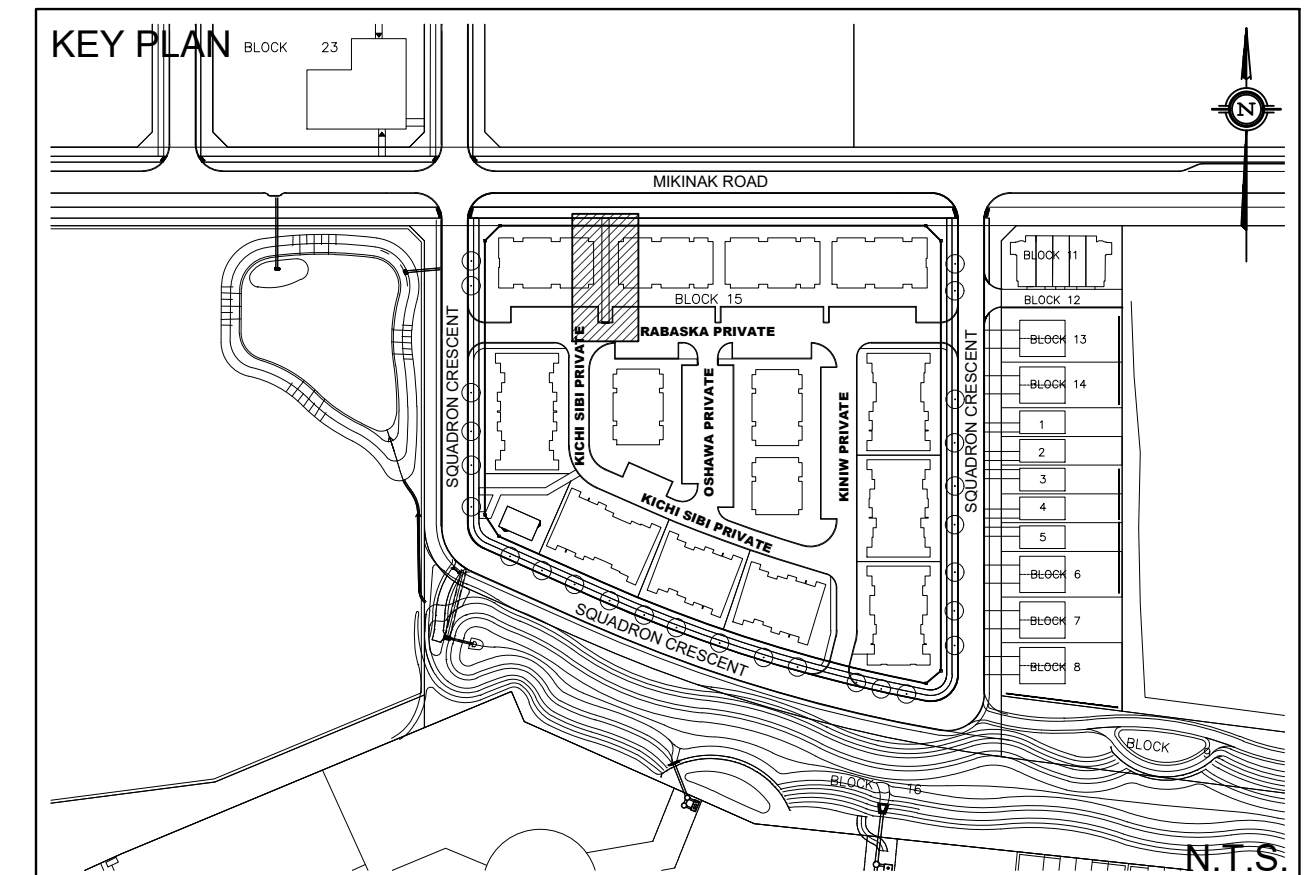

DOUGLAS JAMES, MCIP, RPP
 MANAGER, DEVELOPMENT REVIEW - CENTRAL
 PLANNING, INFRASTRUCTURE & ECONOMIC
 DEVELOPMENT DEPARTMENT, CITY OF OTTAWA

APPROVED
 By Jamesdo at 9:56 am, Feb 11, 2020



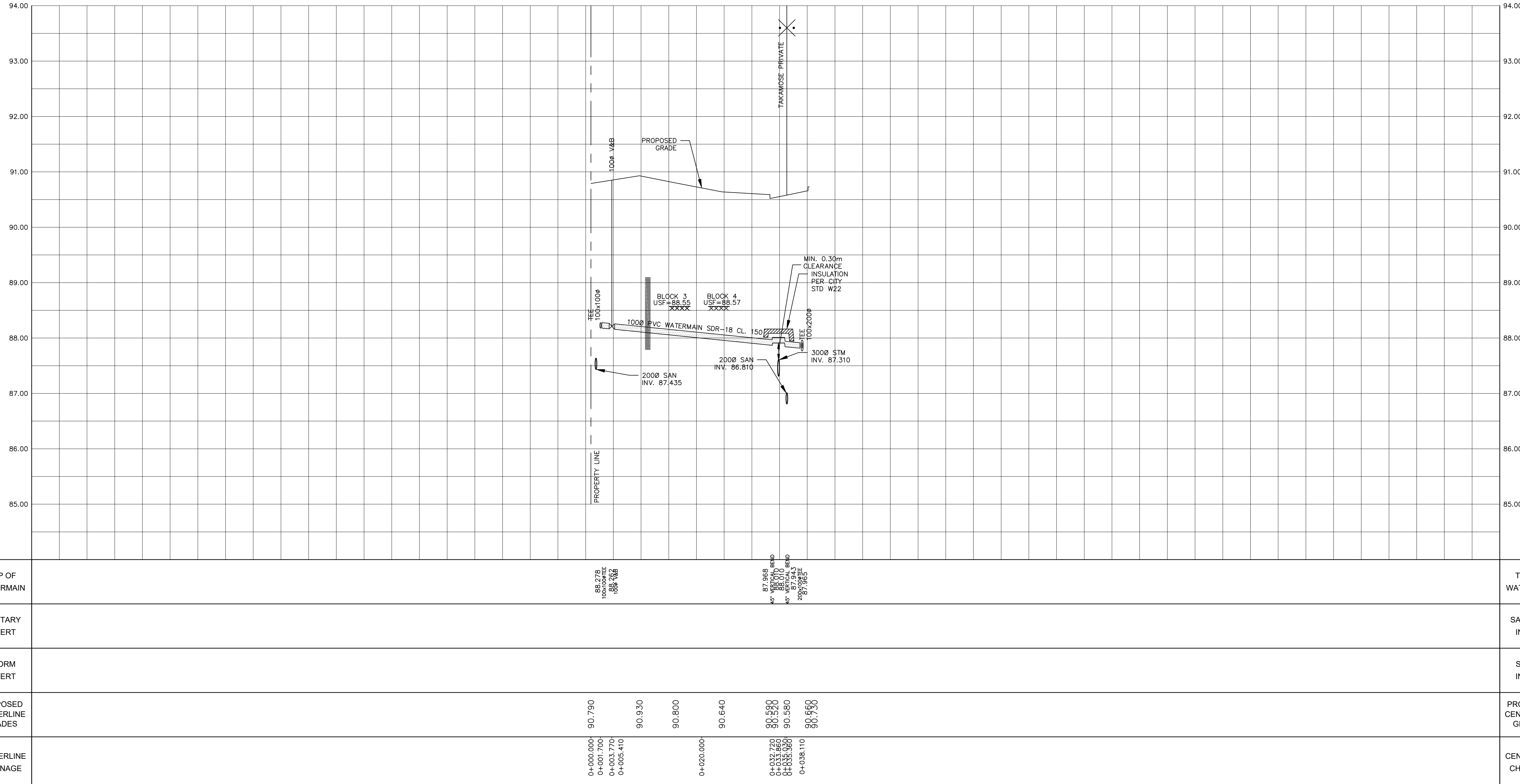
NOTE:
 ALL SANITARY SERVICE CONNECTIONS WITHIN SQUADRON
 CRESCENT SHALL HAVE CONTROLLED SETTLEMENT
 JOINTS DUE TO THE DEPTH OF THE SANITARY SEWER

TO AVOID UNDERMINING OF THE FOOTING, WHERE
 SERVICES ARE WITHIN THE LATERAL SUPPORT ZONE, A
 LIGHTWEIGHT IN-FILLED TRENCH SHOULD BE
 SUB-EXCAVATED BELOW FOOTING LEVEL. REFER TO
 CROSS-SECTIONS DRAWING DS-3 FOR DETAIL.



LEGEND

	PROPERTY LINE		PROPOSED STORM MANHOLE
	PROPOSED WATERMAIN		PROPOSED SANITARY MANHOLE
	PROPOSED SANITARY SEWER		PROPOSED CATCH BASIN
	PROPOSED STORM SEWER		PROPOSED AREA DRAIN (PER CITY STD. S30 & S31)
	PROPOSED PERFORATED SUBDRAIN		COMMUNITY MAILBOX
	PROPOSED VALVE BOX		TWSI (TACTILE WALKING SURFACE INDICATOR)
	PROPOSED FIRE HYDRANT		UNDERSIDE OF FOOTING (USF)
	PEDESTRIAN CROSSWALK		100 YR STM H.G.L.
	DEPRESSED CURB		CLAY SEAL TO BE INSTALLED AS PER PATERSON GROUP GEOTECHNICAL REPORT PG4064-2 DATED JUNE 25, 2019.
	BARRIER CURB (CITY STD SC1.1)		
	RIVERSTONE 100mm DIA, 200mm DEEP 1.5m x 1.3m UNLESS OTHERWISE NOTED SEE DETAIL ON DWG DS-1		
	STANDARD SERVICES BACK TO BACK TOWNHOMES SEE DETAIL ON DWG DS-2		
	STANDARD SERVICES STACKED TOWNHOMES SEE DETAIL ON DWG DS-2		



SITE PLAN INFORMATION
 SITE PLAN PROVIDED BY KORSIAK URBAN PLANNING
 DATED FEBRUARY 4, 2020

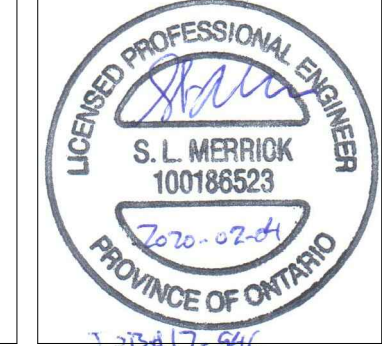
GEOTECHNICAL STUDY
 GEOTECHNICAL RECOMMENDATIONS PROVIDED BY PATERSON GROUP INC.
 PROJ. NO. PG4064-2
 DATED DECEMBER 4, 2019

SITE SERVICING AND STORMWATER MANAGEMENT STUDY
 SERVICING AND STORMWATER MANAGEMENT RECOMMENDATIONS PROVIDED BY DSEL
 PROJ. NO. 17-946
 DATED DECEMBER 2019

BENCH MARK
 ELEVATIONS ARE GEODETIC, REFERRED TO CITY OF OTTAWA VERTICAL BENCHMARK NO. 396
 ELEV= 95.06 METERS

No.	BY	YY.MM.DD	DESCRIPTION
8	G.G.C.	20.02.04	ISSUED FOR MUNICIPAL REVIEW
7	A.J.T.	19.12.19	ISSUED FOR MUNICIPAL REVIEW
6	A.W.T.	19.12.06	ISSUED FOR MUNICIPAL REVIEW
5	G.G.C.	19.11.11	ISSUED FOR MUNICIPAL REVIEW
4	G.G.C.	19.11.01	ISSUED FOR COORDINATION
3	G.G.C.	19.10.08	ISSUED FOR MUNICIPAL REVIEW
2	G.G.C.	19.06.28	ISSUED FOR MUNICIPAL REVIEW
1	S.L.M.	19.02.01	ISSUED FOR MUNICIPAL REVIEW

PROJECT No. 17-946



SERVICING BETWEEN BLK 3 & BLK 4 - PLAN & PROFILE
 (STA 0+000.00 TO STA 0+040.00)
 WATERIDGE - BLOCK 15
 245 SQUADRON CRESCENT © DSEL

MATTAMY HOMES
 50 Hines Road, Suite 100
 Ottawa, Ontario, K2K 2M5
 Tel. (613) 831-5144

DSEL
 david schaeffer engineering ltd
 SMART SUBDIVISIONS™
 120 Iber Road Unit 103
 Stittsville, Ontario, K2S 1E9
 Tel. (613) 836-0856
 Fax. (613) 836-7183
 www.DSEL.ca

DRAWN BY: G.G.C.	CHECKED BY: S.L.M.	DRAWING NO. PP-7	SHEET NO. 10 of 14
DESIGNED BY: G.G.C.	CHECKED BY: S.L.M.		
SCALE: H 1:400, V 1:40	DATE: JANUARY 2019		

D07-12-19-0020