

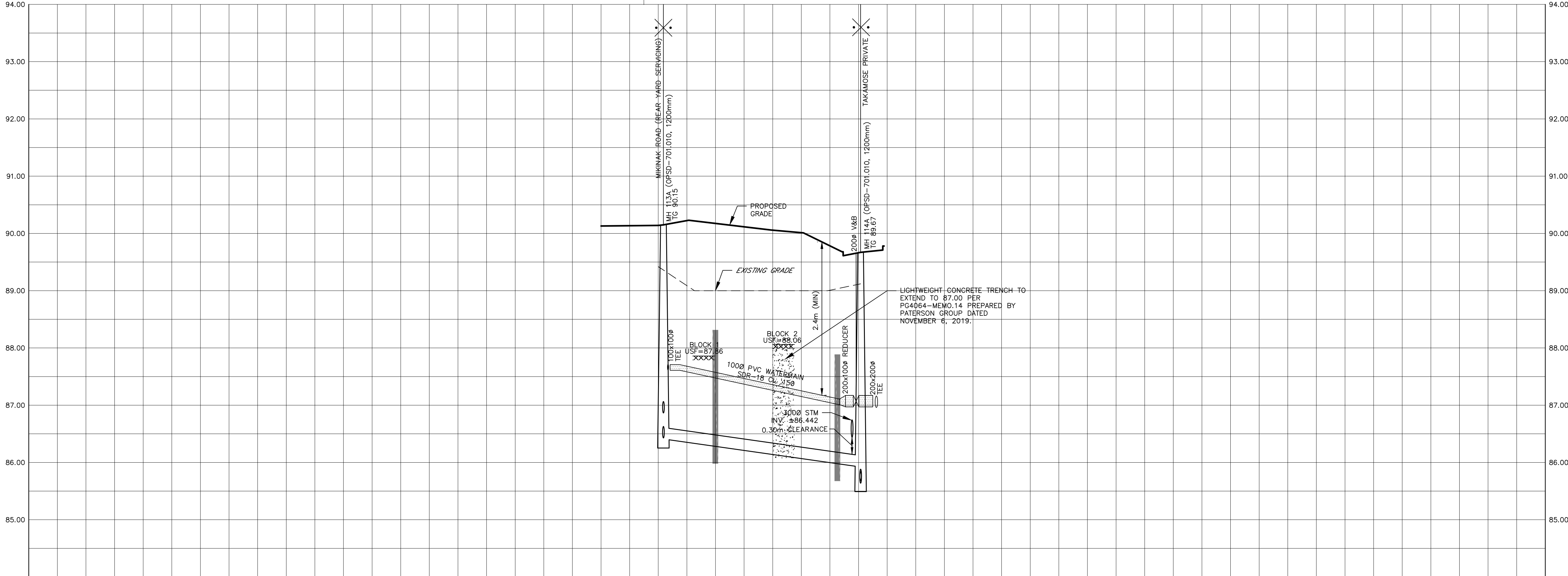
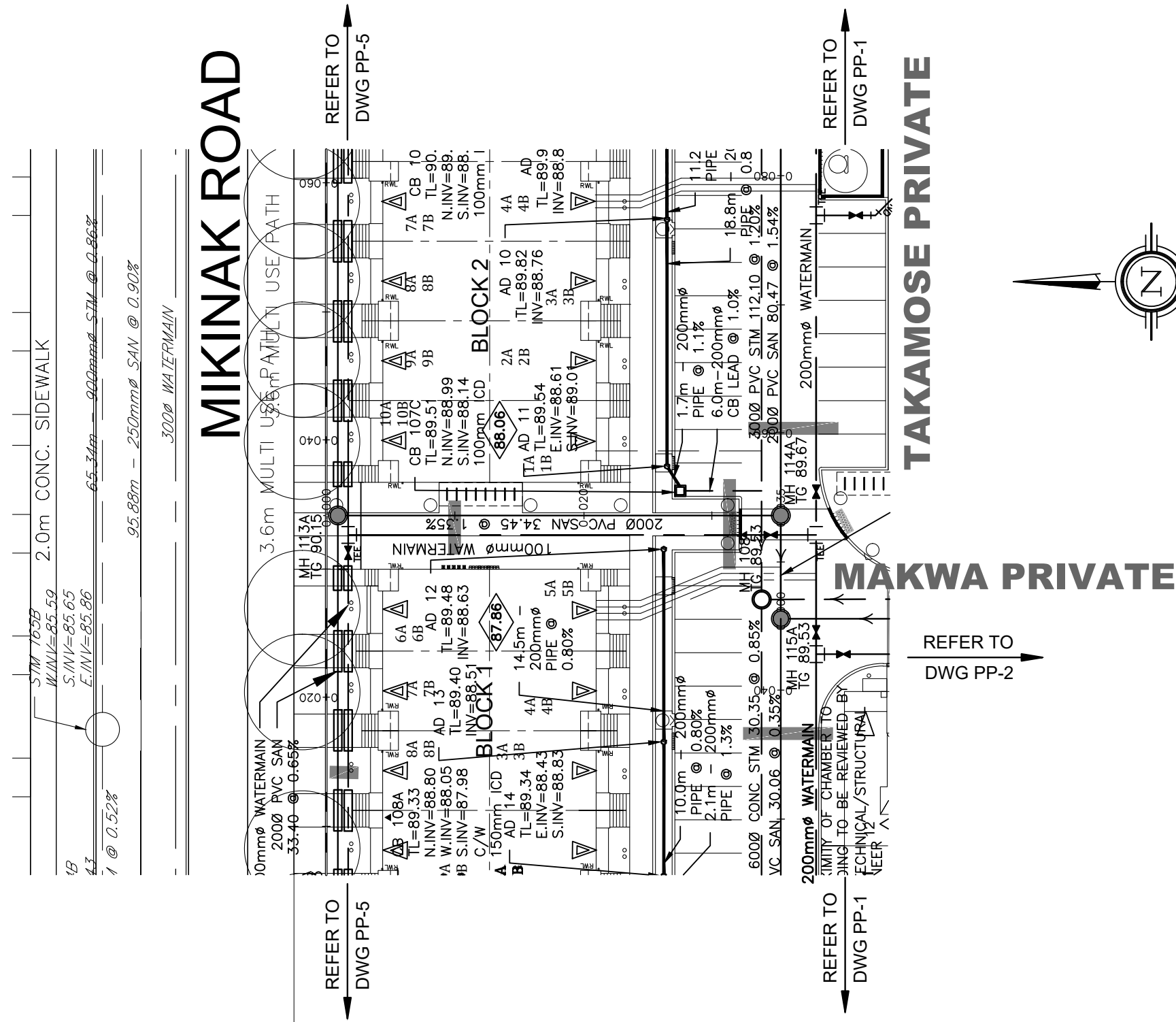
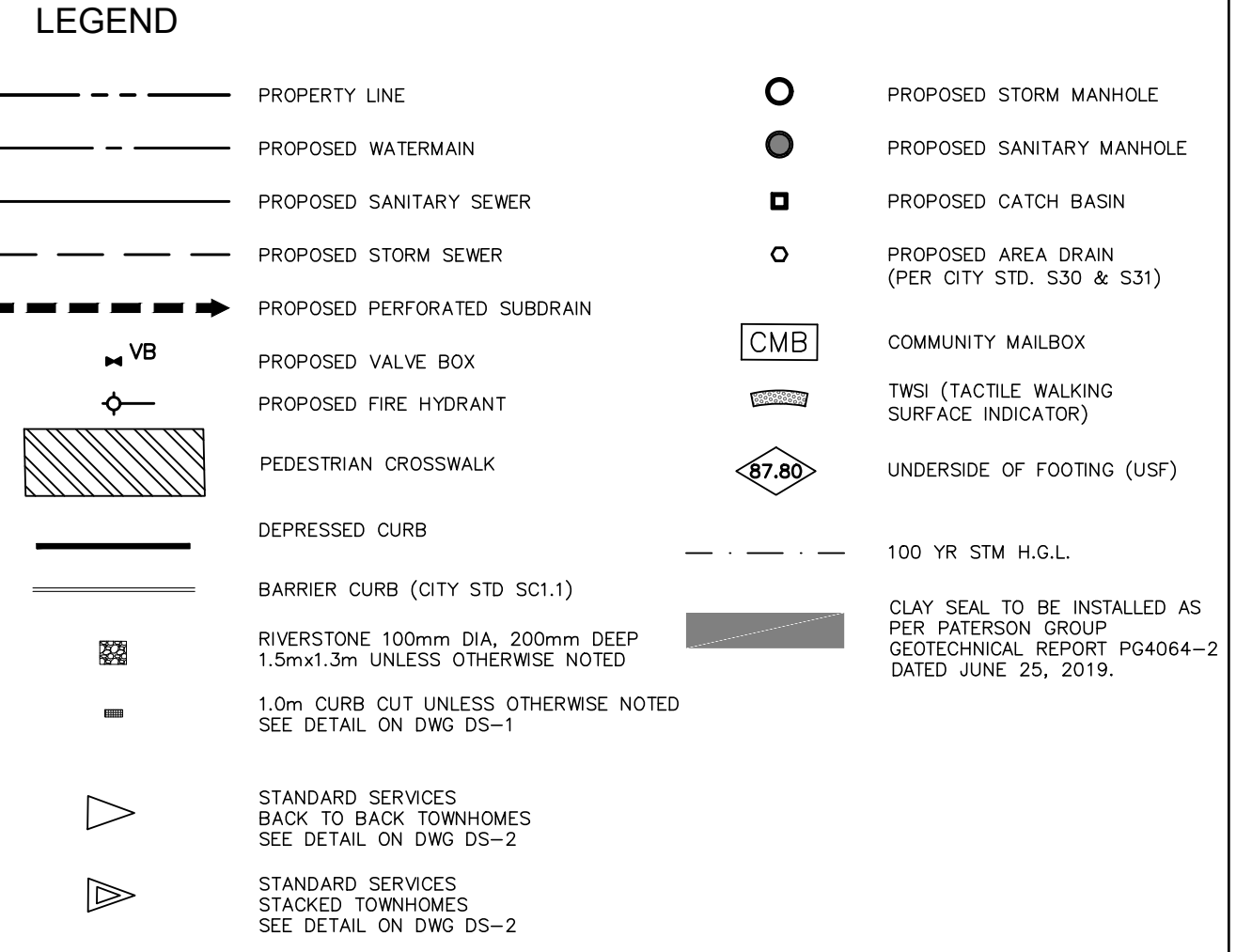
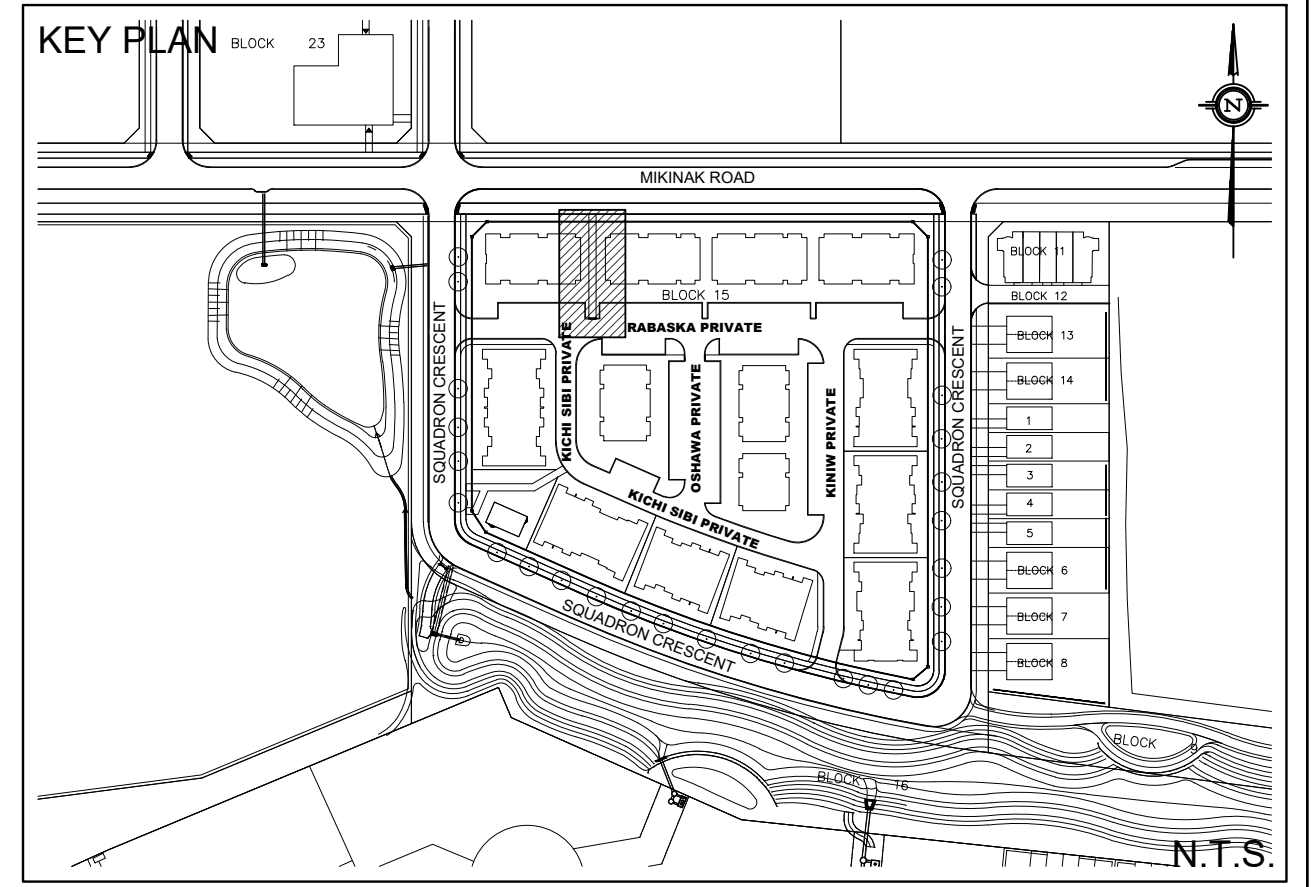
*DJ*

DOUGLAS JAMES, MCIP, RPP  
 MANAGER, DEVELOPMENT REVIEW - CENTRAL  
 PLANNING, INFRASTRUCTURE & ECONOMIC  
 DEVELOPMENT DEPARTMENT, CITY OF OTTAWA

APPROVED  
 By Jamesdo at 9:56 am, Feb 11, 2020

NOTE:  
 ALL SANITARY SERVICE CONNECTIONS WITHIN SQUADRON  
 CRESCENT SHALL HAVE CONTROLLED SETTLEMENT  
 JOINTS DUE TO THE DEPTH OF THE SANITARY SEWER

TO AVOID UNDERMINING OF THE FOOTING, WHERE  
 SERVICES ARE WITHIN THE LATERAL SUPPORT ZONE, A  
 LIGHTWEIGHT IN-FILLED TRENCH SHOULD BE  
 SUB-EXCAVATED BELOW FOOTING LEVEL. REFER TO  
 CROSS-SECTIONS DRAWING DS-3 FOR DETAIL.



**SITE PLAN INFORMATION**  
 SITE PLAN PROVIDED BY KORSIAK URBAN PLANNING  
 DATED FEBRUARY 4, 2020

**GEOTECHNICAL STUDY**  
 GEOTECHNICAL RECOMMENDATIONS PROVIDED BY PATERSON GROUP INC.  
 PROJ. NO. PG4064-2  
 DATED DECEMBER 4, 2019

**SITE SERVICING AND STORMWATER MANAGEMENT STUDY**  
 SERVICING AND STORMWATER MANAGEMENT RECOMMENDATIONS PROVIDED BY DSEL  
 PROJ. NO. 17-946  
 DATED DECEMBER 2019

**BENCH MARK**  
 ELEVATIONS ARE GEODETIC, REFERRED TO CITY OF OTTAWA VERTICAL BENCHMARK NO. 396  
 ELEV= 95.06 METERS

No.	BY	YY.MM.DD	DESCRIPTION
8	G.G.C.	20.02.04	ISSUED FOR MUNICIPAL REVIEW
7	A.J.T.	19.12.19	ISSUED FOR MUNICIPAL REVIEW
6	A.W.T.	19.12.06	ISSUED FOR MUNICIPAL REVIEW
5	G.G.C.	19.11.11	ISSUED FOR MUNICIPAL REVIEW
4	G.G.C.	19.11.01	ISSUED FOR COORDINATION
3	G.G.C.	19.10.08	ISSUED FOR MUNICIPAL REVIEW
2	G.G.C.	19.06.28	ISSUED FOR MUNICIPAL REVIEW
1	S.L.M.	19.02.01	ISSUED FOR MUNICIPAL REVIEW

TOP OF WATERMAIN	TOP OF WATERMAIN
W 86.428 S 86.397 E 86.863	W 85.637 N 85.934 E 85.683
1000x1000# TELE MH 113A (OPSD-701.010, 1200mm) TO 90.15	2000x2000# TELE MH 114A (OPSD-701.010, 1200mm) TO 89.67
90.150 90.230	89.660 89.670 89.760
0+000.000 0+000.900	0+020.000 0+034.431 0+035.505 0+038.110 0+040.000
90.060 90.010	89.760
0+020.000	0+040.000
0+000.000 0+000.900	0+040.000

PROJECT No. 17-946

**SERVICING BETWEEN BLK 1 & BLK 2 - PLAN & PROFILE**  
 (STA 0+000.00 TO STA 0+040.00)  
 WATERIDGE - BLOCK 15  
 245 SQUADRON CRESCENT © DSEL

MATTAMY HOMES  
 50 Hines Road, Suite 100  
 Ottawa, Ontario, K2K 2M5  
 Tel. (613) 831-5144

**DSEL**  
 david schaeffer engineering ltd  
 SMART SUBDIVISIONS™  
 120 Iber Road Unit 103  
 Stittville, Ontario, K2S 1E9  
 Tel. (613) 836-0856  
 Fax. (613) 836-7183  
 www.DSEL.ca

DRAWN BY: G.G.C.	CHECKED BY: S.L.M.	DRAWING NO. PP-6	SHEET NO. 9 of 14
DESIGNED BY: G.G.C.	CHECKED BY: S.L.M.		
SCALE: H 1:400, V 1:40	DATE: JANUARY 2019		