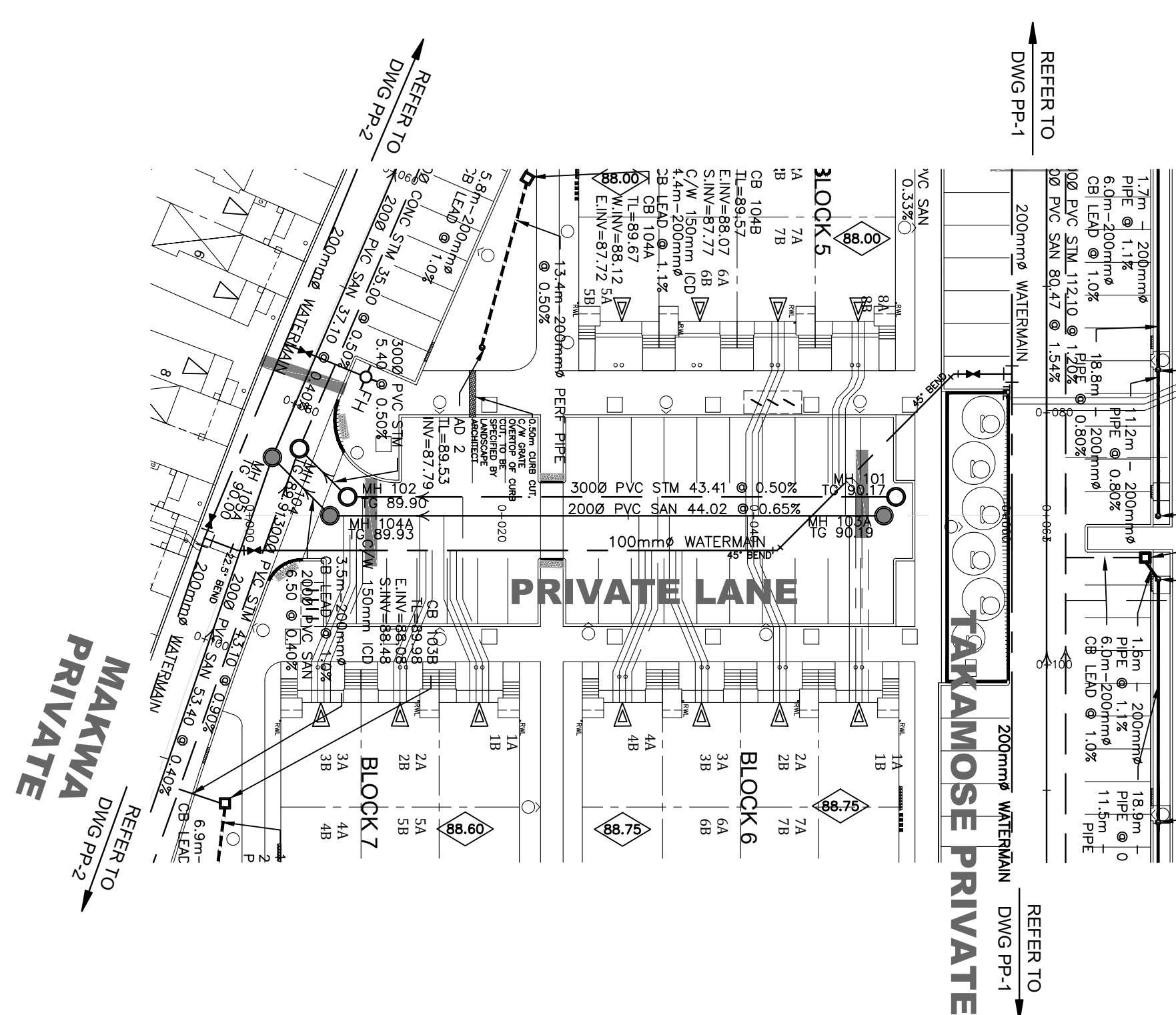


*DJ*

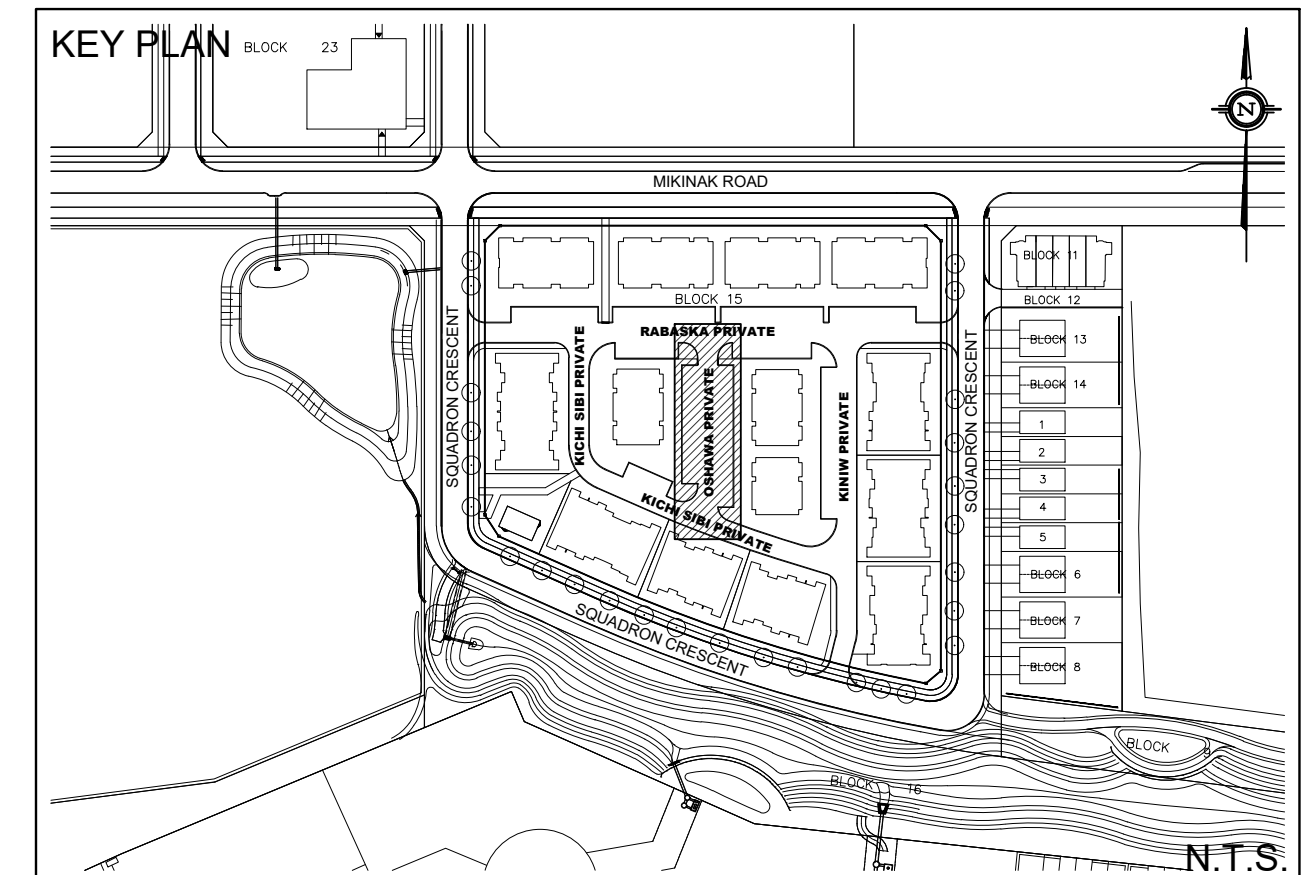
**DOUGLAS JAMES, MCIP, RPP**  
 MANAGER, DEVELOPMENT REVIEW - CENTRAL  
 PLANNING, INFRASTRUCTURE & ECONOMIC  
 DEVELOPMENT DEPARTMENT, CITY OF OTTAWA

**APPROVED**  
 By Jamesdo at 9:55 am, Feb 11, 2020

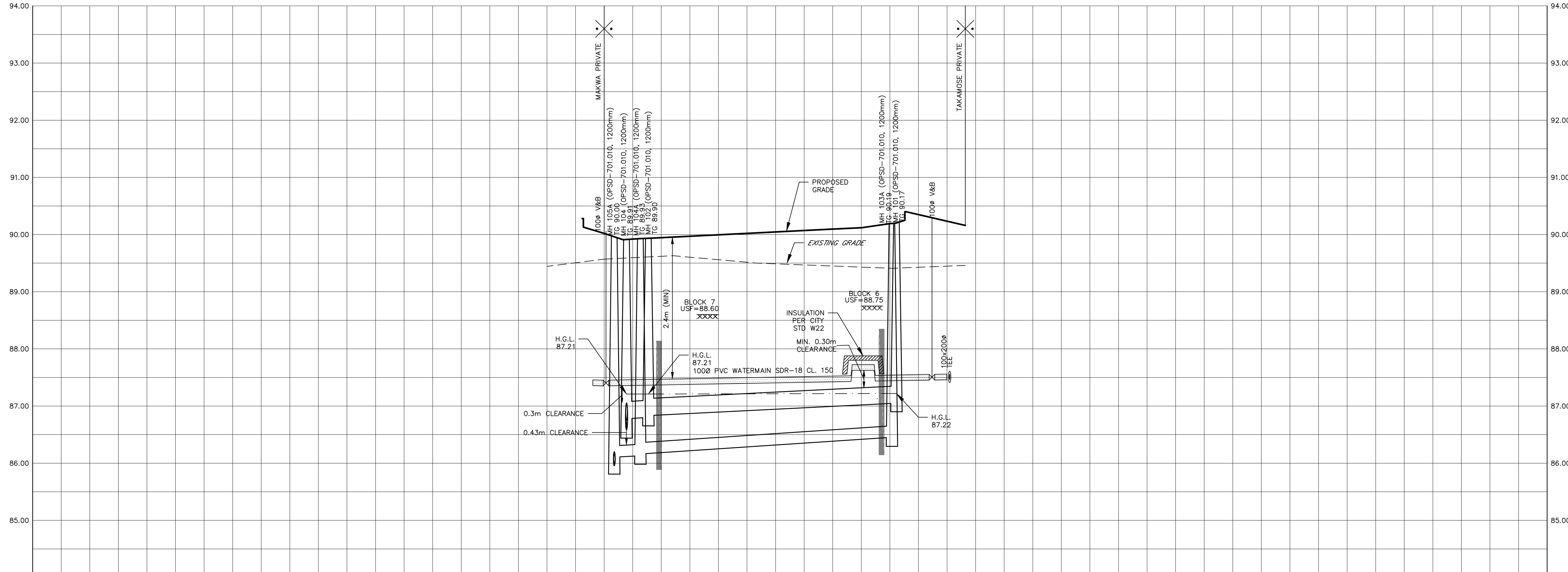


**NOTE:**  
 ALL SANITARY SERVICE CONNECTIONS WITHIN SQUADRON  
 CRESCENT SHALL HAVE CONTROLLED SETTLEMENT  
 JOINTS DUE TO THE DEPTH OF THE SANITARY SEWER

TO AVOID UNDERMINING OF THE FOOTING, WHERE  
 SERVICES ARE WITHIN THE LATERAL SUPPORT ZONE, A  
 LIGHTWEIGHT IN-FILLED TRENCH SHOULD BE  
 SUB-EXCAVATED BELOW FOOTING LEVEL. REFER TO  
 CROSS-SECTIONS DRAWING DS-3 FOR DETAIL.



- LEGEND**
- PROPERTY LINE
  - PROPOSED WATERMAIN
  - PROPOSED SANITARY SEWER
  - PROPOSED STORM SEWER
  - PROPOSED PERFORATED SUBDRAIN
  - PROPOSED VALVE BOX
  - PROPOSED FIRE HYDRANT
  - PEDESTRIAN CROSSWALK
  - DEPRESSED CURB
  - BARRIER CURB (CITY STD SC1.1)
  - RIVERSTONE 100mm DIA, 200mm DEEP  
1.5m x 1.3m UNLESS OTHERWISE NOTED
  - 1.0m CURB CUT UNLESS OTHERWISE NOTED  
SEE DETAIL ON DWG DS-1
  - STANDARD SERVICES  
BACK TO BACK TOWNHOMES  
SEE DETAIL ON DWG DS-2
  - STANDARD SERVICES  
STACKED TOWNHOMES  
SEE DETAIL ON DWG DS-2
  - PROPOSED STORM MANHOLE
  - PROPOSED SANITARY MANHOLE
  - PROPOSED CATCH BASIN
  - PROPOSED AREA DRAIN  
(PER CITY STD. S30 & S31)
  - COMMUNITY MAILBOX
  - TWSI (TACTILE WALKING  
SURFACE INDICATOR)
  - UNDERSIDE OF FOOTING (USF)
  - 100 YR STM H.G.L.
  - CLAY SEAL TO BE INSTALLED AS  
PER PATERSON GROUP  
GEOTECHNICAL REPORT PG4064-2  
DATED JUNE 25, 2019.



**SITE PLAN INFORMATION**  
 SITE PLAN PROVIDED BY KORSIAK URBAN PLANNING  
 DATED FEBRUARY 4, 2020

**GEOTECHNICAL STUDY**  
 GEOTECHNICAL RECOMMENDATIONS PROVIDED BY PATERSON GROUP INC.  
 PROJ. NO. PG4064-2  
 DATED DECEMBER 4, 2019

**SITE SERVICING AND STORMWATER MANAGEMENT STUDY**  
 SERVICING AND STORMWATER MANAGEMENT RECOMMENDATIONS PROVIDED BY DSEL  
 PROJ. NO. 17-946  
 DATED DECEMBER 2019

**BENCH MARK**  
 ELEVATIONS ARE GEODETIC, REFERRED TO CITY OF OTTAWA VERTICAL BENCHMARK NO. 396  
 ELEV= 95.06 METERS

No.	BY	YY.MM.DD	DESCRIPTION
8	G.G.C.	20.02.04	ISSUED FOR MUNICIPAL REVIEW
7	A.J.T.	19.12.19	ISSUED FOR MUNICIPAL REVIEW
6	A.W.T.	19.12.06	ISSUED FOR MUNICIPAL REVIEW
5	G.G.C.	19.11.11	ISSUED FOR MUNICIPAL REVIEW
4	G.G.C.	19.11.01	ISSUED FOR COORDINATION
3	G.G.C.	19.10.08	ISSUED FOR MUNICIPAL REVIEW
2	G.G.C.	19.06.28	ISSUED FOR MUNICIPAL REVIEW
1	S.L.M.	19.02.01	ISSUED FOR MUNICIPAL REVIEW

TOP OF WATERMAIN	TOP OF WATERMAIN
2000 PVC SAN 6.50 @ 0.40% SDR-35 SE 85.999 NW 85.955 E 86.748 NE 86.584 SW 86.803 N 86.151	2000 PVC SAN 44.02 @ 0.65% SDR-35 S 86.447
3000 PVC STM 5.40 @ 0.50% SDR-35 E 86.748 NE 86.584 SW 86.803 N 86.833	3000 PVC STM 43.41 @ 0.50% SDR-35 S 87.045
90.280 90.020 89.910 89.830 89.940 89.970 90.020 90.090 90.120 90.190 90.200 90.400 90.160	90.280 90.020 89.970 90.020 90.090 90.120 90.190 90.200 90.400 90.160
0+002.870 0+001.030 0+000.000 0+000.774 0+003.908 0+008.340 0+007.739 0+020.000	0+040.000 0+043.205 0+047.435 0+050.388 0+055.840 0+057.360 0+060.444 0+080.000
CENTERLINE CHAINAGE	CENTERLINE CHAINAGE

**PROJECT No. 17-946**

**PRIVATE LANE - PLAN & PROFILE**  
 (STA 0+000.00 TO STA 0+080.00)  
 WATERIDGE - BLOCK 15  
 245 SQUADRON CRESCENT

**MATTAMY HOMES**  
 50 Hines Road, Suite 100  
 Ottawa, Ontario, K2K 2M5  
 Tel. (613) 831-5144

**DSEL**  
 david schaeffer engineering ltd  
 SMART SUBDIVISIONS™  
 120 Iber Road Unit 103  
 Stittsville, Ontario, K2S 1E9  
 Tel. (613) 836-0856  
 Fax. (613) 836-7183  
 www.DSEL.ca

DRAWN BY: G.G.C.	CHECKED BY: S.L.M.	DRAWING NO. PP-4	SHEET NO. 7 of 14
DESIGNED BY: G.G.C.	CHECKED BY: S.L.M.	DATE: JANUARY 2019	

D07-12-19-0020