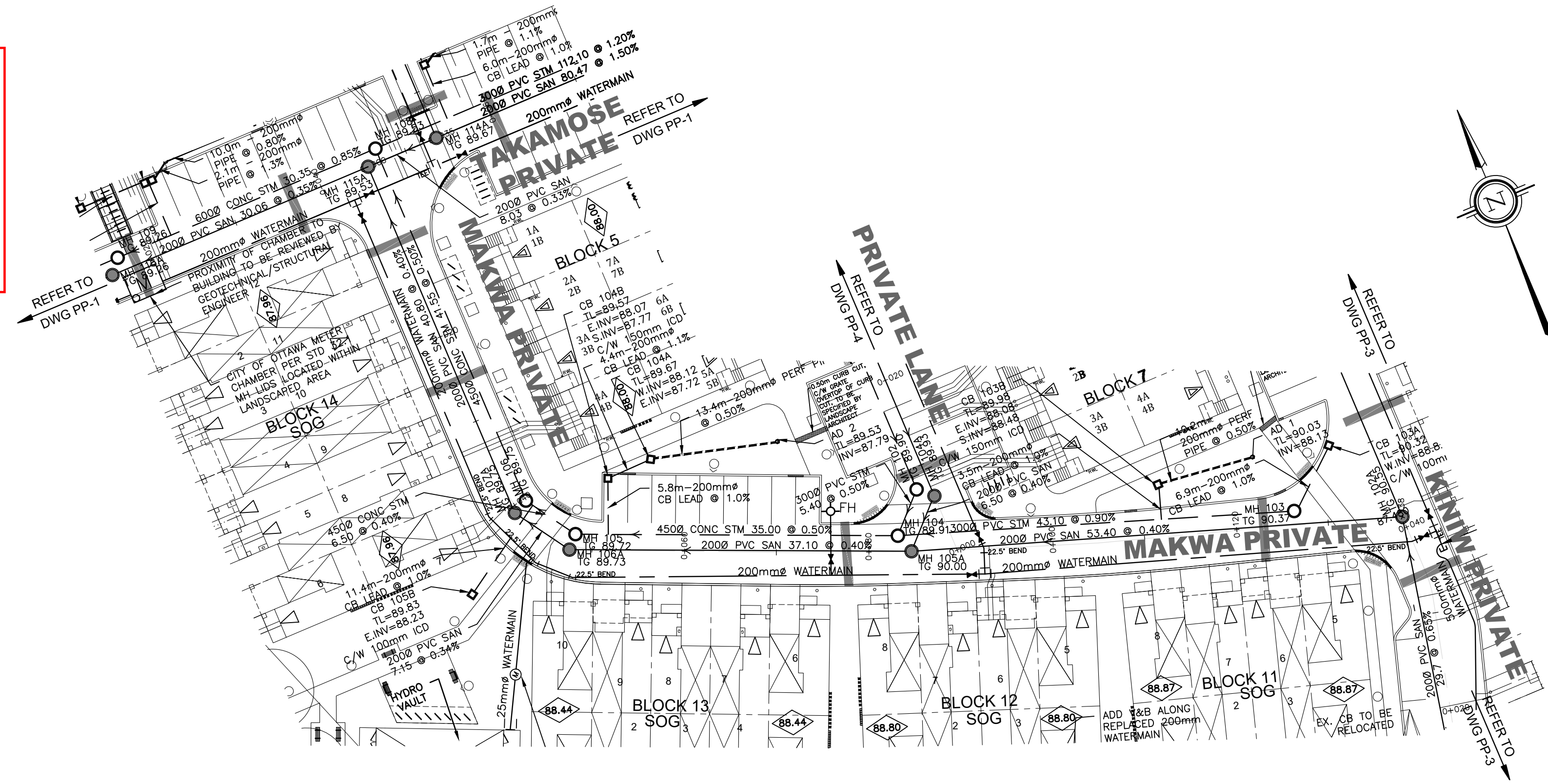


*Douglas James*

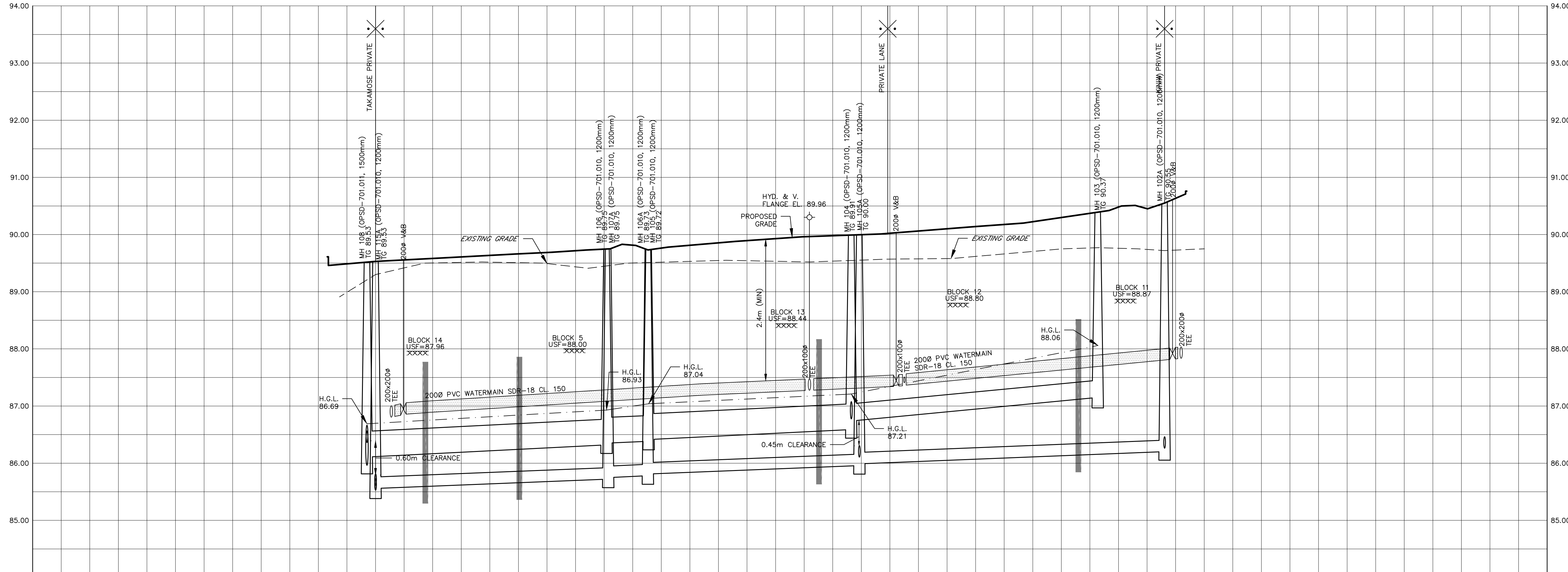
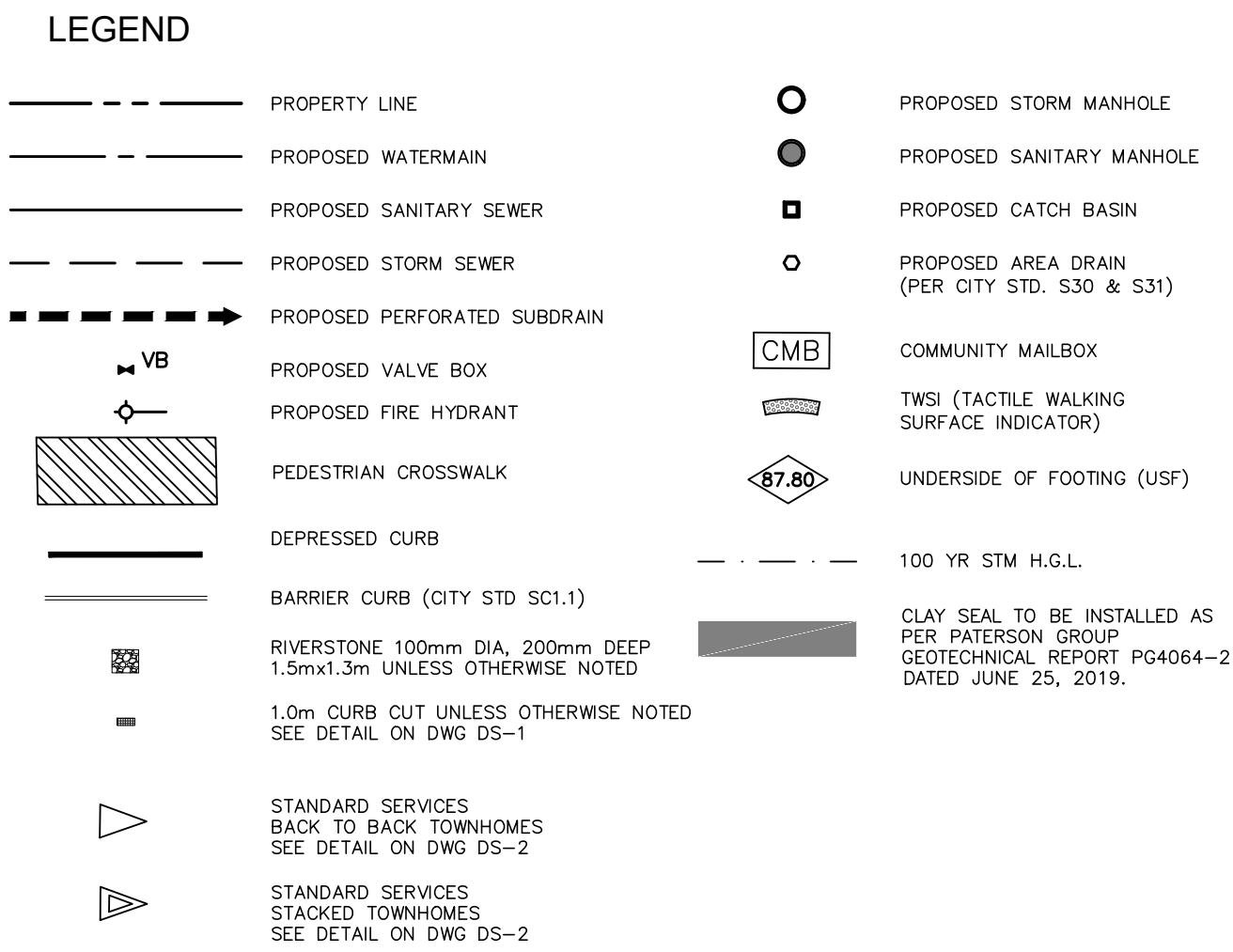
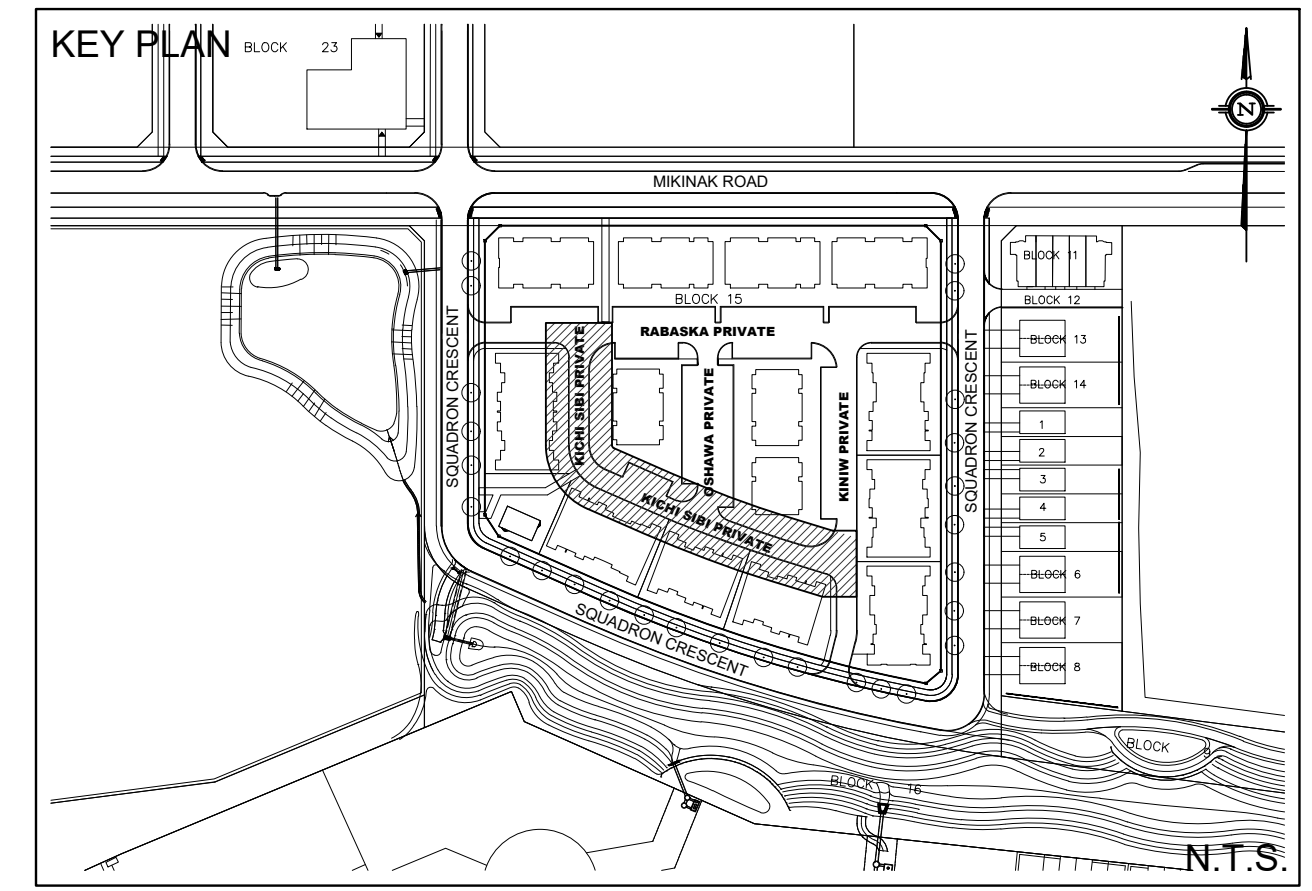
**DOUGLAS JAMES, MCIP, RPP**  
**MANAGER, DEVELOPMENT REVIEW - CENTRAL**  
**PLANNING, INFRASTRUCTURE & ECONOMIC**  
**DEVELOPMENT DEPARTMENT, CITY OF OTTAWA**

**APPROVED**  
 By Jamesdo at 9:54 am, Feb 11, 2020



**NOTE:**  
 ALL SANITARY SERVICE CONNECTIONS WITHIN SQUADRON  
 CRESCENT SHALL HAVE CONTROLLED SETTLEMENT  
 JOINTS DUE TO THE DEPTH OF THE SANITARY SEWER

TO AVOID UNDERMINING OF THE FOOTING, WHERE  
 SERVICES ARE WITHIN THE LATERAL SUPPORT ZONE, A  
 LIGHTWEIGHT IN-FILLED TRENCH SHOULD BE  
 SUB-EXCAVATED BELOW FOOTING LEVEL. REFER TO  
 CROSS-SECTIONS DRAWING\_DS-3 FOR DETAIL.



**SITE PLAN INFORMATION**  
 SITE PLAN PROVIDED BY KORSIAK URBAN PLANNING  
 DATED FEBRUARY 4, 2020

**GEOTECHNICAL STUDY**  
 GEOTECHNICAL RECOMMENDATIONS PROVIDED BY PATERSON GROUP INC.  
 PROJ. NO. PG4064-2  
 DATED DECEMBER 4, 2019

**SITE SERVICING AND STORMWATER MANAGEMENT STUDY**  
 SERVICING AND STORMWATER MANAGEMENT RECOMMENDATIONS PROVIDED BY DSEL  
 PROJ. NO. 17-946  
 DATED DECEMBER 2019

**BENCH MARK**  
 ELEVATIONS ARE GEODETIC, REFERRED TO CITY OF OTTAWA VERTICAL BENCHMARK NO. 396  
 ELEV= 95.06 METERS

No.	BY	DATE	DESCRIPTION
8	G.G.C.	20.02.04	ISSUED FOR MUNICIPAL REVIEW
7	A.J.T.	19.12.19	ISSUED FOR MUNICIPAL REVIEW
6	A.W.T.	19.12.06	ISSUED FOR MUNICIPAL REVIEW
5	G.G.C.	19.11.11	ISSUED FOR MUNICIPAL REVIEW
4	G.G.C.	19.11.01	ISSUED FOR COORDINATION
3	G.G.C.	19.10.08	ISSUED FOR MUNICIPAL REVIEW
2	G.G.C.	19.06.28	ISSUED FOR MUNICIPAL REVIEW
1	S.L.M.	19.02.01	ISSUED FOR MUNICIPAL REVIEW

PROJECT No. 17-946

TOP OF WATERMAIN	SANITARY INVERT	STORM INVERT	PROPOSED CENTERLINE GRADES	CENTERLINE CHAINAGE
89.610	89.530	89.590	89.660	0+000.000
89.690	89.730	89.780	89.880	0+020.000
89.750	89.810	89.860	89.960	0+040.000
89.810	89.850	89.900	90.000	0+060.000
89.870	89.910	89.960	90.100	0+080.000
89.930	89.970	90.020	90.200	0+100.000
89.990	90.030	90.080	90.400	0+120.000
90.050	90.090	90.140	90.500	0+140.000

**MAKWA PRIVATE - PLAN & PROFILE**  
 (STA 0+000.00 TO STA 0+140.00)  
 WATERIDGE - BLOCK 15  
 245 SQUADRON CRESCENT

MATTAMY HOMES

**DSEL**  
 david schaeffer engineering ltd  
 SMART SUBDIVISIONS™

50 Hines Road, Suite 100  
 Ottawa, Ontario, K2K 2M5  
 Tel. (613) 831-5144

120 Iber Road Unit 103  
 Stittsville, Ontario, K2S 1E9  
 Tel. (613) 836-0856  
 Fax. (613) 836-7183  
 www.DSEL.ca

DRAWN BY: G.G.C.	CHECKED BY: S.L.M.	DRAWING NO. PP-2	SHEET NO. 5 of 14
DESIGNED BY: G.G.C.	CHECKED BY: S.L.M.	DATE: JANUARY 2019	
SCALE: H 1:400, V 1:40			