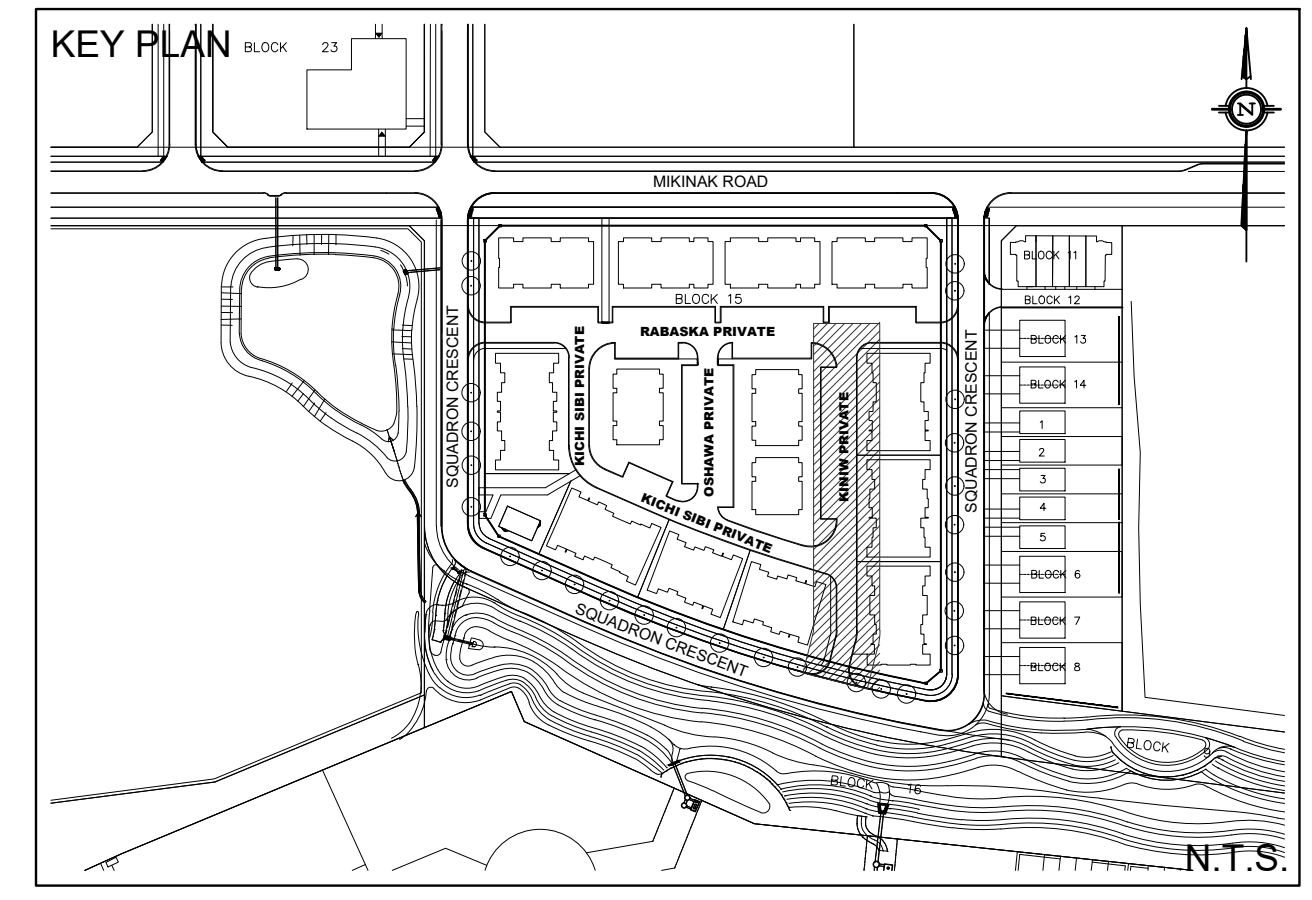


NOTE : ALL SANITARY SERVICE CONNECTIONS WITHIN SQUADRON CRESCENT SHALL HAVE CONTROLLED SETTLEMENT JOINTS DUE TO THE DEPTH OF THE SANITARY SEWER.

TO AVOID UNDERMINING OF THE FOOTING, WHERE SERVICES ARE WITHIN THE LATERAL SUPPORT ZONE, A LIGHTWEIGHT INFILLED TRENCH SHOULD BE SUB-EXCAVATED BELOW FOOTING LEVEL. REFER TO CROSS-SECTIONS DRAWING DS-3 FOR DETAIL.

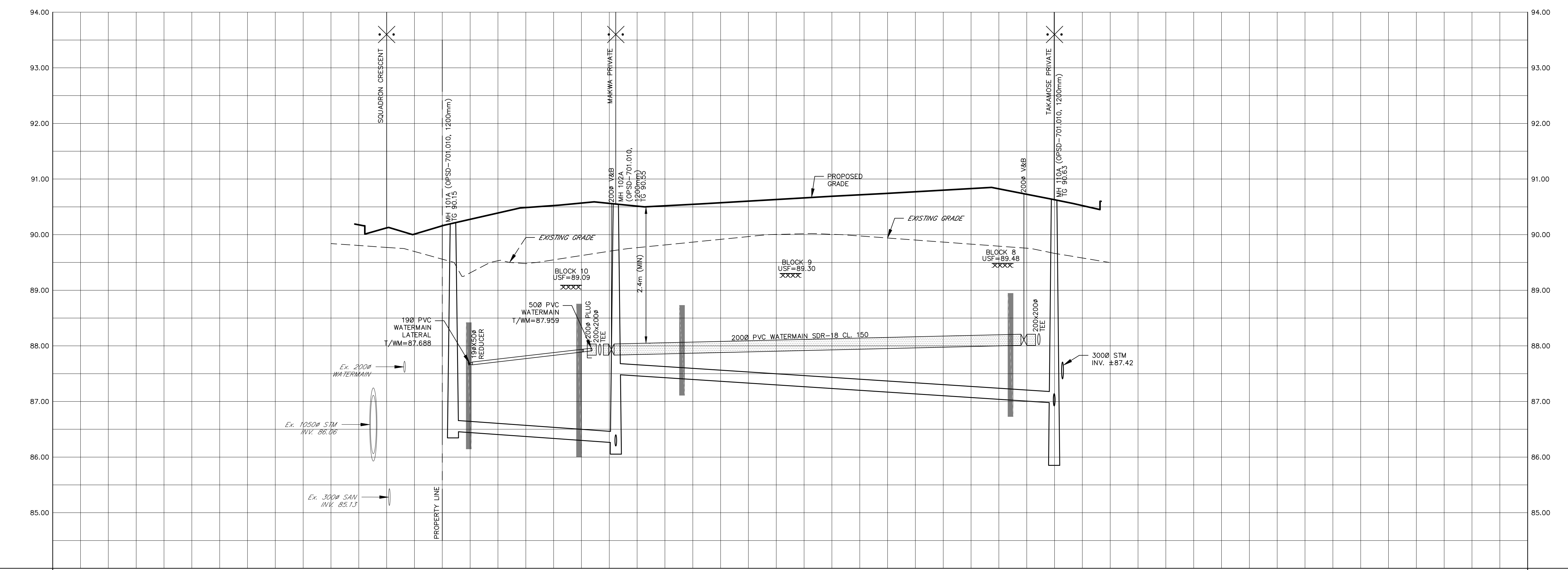
*D. James*  
**DOUGLAS JAMES, MCIP, RPP**  
**MANAGER, DEVELOPMENT REVIEW - CENTRAL PLANNING, INFRASTRUCTURE & ECONOMIC DEVELOPMENT DEPARTMENT, CITY OF OTTAWA**

**APPROVED**  
 By Jamesdo at 9:52 am, Feb 11, 2020



LEGEND

- - - - -	PROPERTY LINE	○	PROPOSED STORM MANHOLE
- - - - -	PROPOSED WATERMAIN	●	PROPOSED SANITARY MANHOLE
- - - - -	PROPOSED SANITARY SEWER	□	PROPOSED CATCH BASIN
- - - - -	PROPOSED STORM SEWER	○	PROPOSED AREA DRAIN (PER CITY STD. S30 & S31)
- - - - -	PROPOSED PERFORATED SUBDRAIN	◻	CMB
- - - - -	PROPOSED VALVE BOX	◻	COMMUNITY MAILBOX
- - - - -	PROPOSED FIRE HYDRANT	◻	TWSI (TACTILE WALKING SURFACE INDICATOR)
- - - - -	PEDESTRIAN CROSSWALK	◻	UNDERSIDE OF FOOTING (USF)
- - - - -	DEPRESSED CURB	- - - - -	100 YR STM H.G.L.
- - - - -	BARRIER CURB (CITY STD. SC1.1)	- - - - -	CLAY SEAL TO BE INSTALLED AS PER PATERSON GROUP GEOTECHNICAL REPORT PG4064-2 DATED JUNE 25, 2019.
- - - - -	RIVERSTONE 100mm DIA., 200mm DEEP 1.5m x 1.3m UNLESS OTHERWISE NOTED		
- - - - -	1.0m CURB CUT UNLESS OTHERWISE NOTED SEE DETAIL ON DWG DS-1		
- - - - -	STANDARD SERVICES BACK TO BACK TOWNHOMES SEE DETAIL ON DWG DS-2		
- - - - -	STANDARD SERVICES STACKED TOWNHOMES SEE DETAIL ON DWG DS-2		



**SITE PLAN INFORMATION**  
 SITE PLAN PROVIDED BY KORSIAK URBAN PLANNING  
 DATED FEBRUARY 4, 2020

**GEOTECHNICAL STUDY**  
 GEOTECHNICAL RECOMMENDATIONS PROVIDED BY PATERSON GROUP INC.  
 PROJ. NO. PG4064-2  
 PROJ. NO. 17-946  
 DATED DECEMBER 4, 2019

**SITE SERVICING AND STORMWATER MANAGEMENT STUDY**  
 SERVICING AND STORMWATER MANAGEMENT RECOMMENDATIONS PROVIDED BY DSEL  
 PROJ. NO. 17-946  
 DATED DECEMBER 2019

**BENCH MARK**  
 ELEVATIONS ARE GEODETIC, REFERRED TO CITY OF OTTAWA VERTICAL BENCHMARK NO. 396  
 ELEV= 95.06 METERS

No.	BY	YY.MM.DD	DESCRIPTION
8	G.G.C.	20.02.04	ISSUED FOR MUNICIPAL REVIEW
7	A.J.T.	19.12.19	ISSUED FOR MUNICIPAL REVIEW
6	A.W.T.	19.12.06	ISSUED FOR MUNICIPAL REVIEW
5	G.G.C.	19.11.11	ISSUED FOR MUNICIPAL REVIEW
4	G.G.C.	19.11.01	ISSUED FOR COORDINATION
3	G.G.C.	19.10.08	ISSUED FOR MUNICIPAL REVIEW
2	G.G.C.	19.06.28	ISSUED FOR MUNICIPAL REVIEW
1	S.L.M.	19.02.01	ISSUED FOR MUNICIPAL REVIEW

TOP OF WATERMAIN	SANITARY INVERT	STORM INVERT	PROPOSED CENTERLINE GRADES	CENTERLINE CHAINAGE	TOP OF WATERMAIN	SANITARY INVERT	STORM INVERT	PROPOSED CENTERLINE GRADES	CENTERLINE CHAINAGE
87.680	N 86.456		90.190	0+000.000	87.680		90.170	0+000.000	0+000.000
87.680	2000 PVC SAN 29.70 @ 0.65% SDR-35		90.160	0+008.526	87.680		90.480	0+020.000	0+008.526
87.680			90.130	0+015.170	87.680		90.530	0+028.274	0+015.170
87.680			90.000	0+035.307	87.680		90.590	0+035.307	0+035.307
87.680			90.170	0+040.000	87.680		90.550	0+040.000	0+040.000
87.680			90.480	0+044.774	87.680		90.500	0+044.774	0+044.774
87.680			90.530	0+060.000	87.680		90.550	0+060.000	0+060.000
87.680			90.590	0+100.000	87.680		90.550	0+100.000	0+100.000
87.680			90.550	0+114.492	87.680		90.550	0+114.492	0+114.492
87.680			90.500	0+117.174	87.680		90.550	0+117.174	0+117.174
87.680			90.550	0+119.924	87.680		90.550	0+119.924	0+119.924
87.680			90.550	0+120.000	87.680		90.550	0+120.000	0+120.000

**PROJECT No. 17-946**

**KINIW PRIVATE - PLAN & PROFILE**  
 (STA 0+000.00 TO STA 0+120.00)  
 WATERIDGE - BLOCK 15  
 245 SQUADRON CRESCENT

**MATTAMY HOMES**  
 50 Hines Road, Suite 100  
 Ottawa, Ontario, K2K 2M5  
 Tel. (613) 831-5144

**DSEL**  
 david schaeffer engineering ltd  
 SMART SUBDIVISIONS™  
 120 Iber Road Unit 103  
 Stittsville, Ontario, K2S 1E9  
 Tel. (613) 836-0856  
 Fax. (613) 836-7183  
 www.DSEL.ca

DRAWN BY: G.G.C. CHECKED BY: S.L.M. DRAWING NO. PP-3 SHEET NO. 6 of 14  
 DESIGNED BY: G.G.C. CHECKED BY: S.L.M.  
 SCALE: H 1:400, V 1:40 DATE: JANUARY 2019