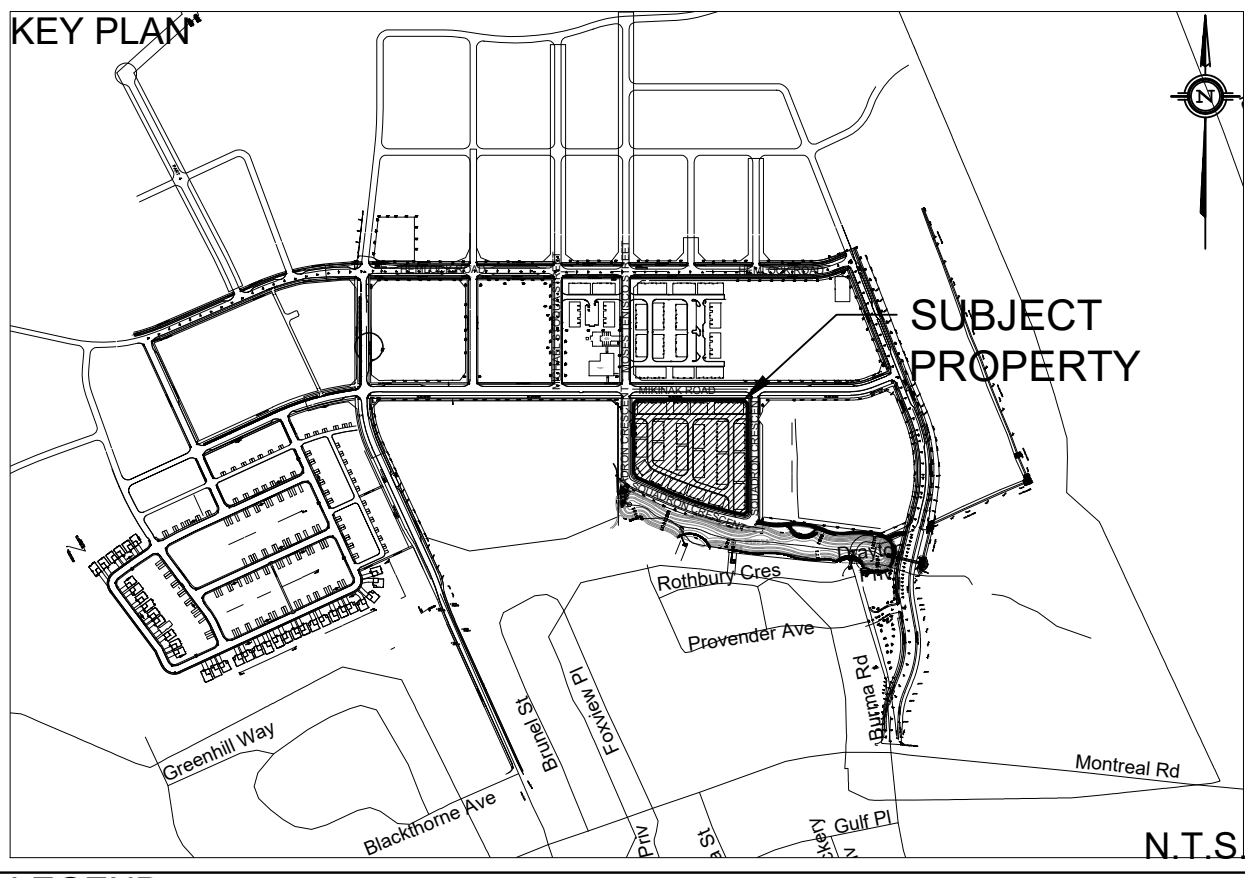
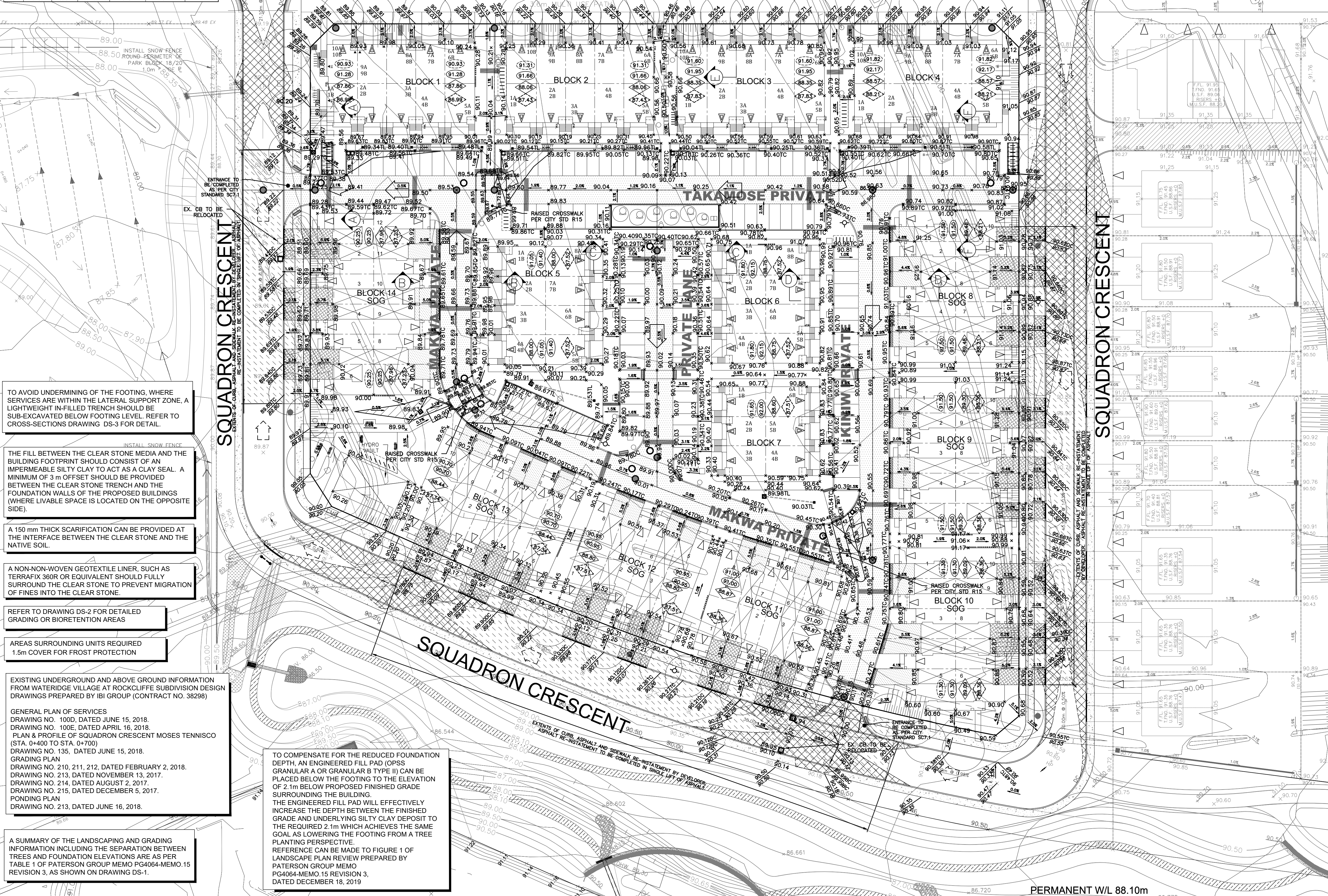


LANDSCAPING PLAN GRADING DETAILS FROM PATERSON GROUP  
MEMO PG4064-MEMO.15

Landscaping and Grading Details					
Block	Underside of Footing Elevation	Lowest Prop. Finished Grade	Underside of Engineered Pad (If Required)	Tree to Foundation (m)	Rebar in Foundation (Y/N)
1	87.98	89.70	1.84	61.60	5.5
2	88.06	90.15	2.09	68.05	5.5
3	88.35	90.50	2.15	N/A	5.6
4	88.57	90.68	2.11	N/A	5.6
5	88.00	89.89	1.89	N/A	4.8
6	88.75	90.62	1.87	N/A	5.2
7	88.60	90.40	1.80	N/A	4.5
8	89.48	91.03	1.55	68.93	5.6
9	89.30	90.81	1.51	68.71	5.6
10	89.09	90.85	1.76	68.75	7.0
11	88.87	90.52	1.65	68.42	5.0
12	88.80	90.31	1.51	68.21	5.5
13	88.44	90.13	1.69	68.03	5.0
14	87.95	89.91	1.95	67.81	5.2



LEGEND	
PROPERTY LINE	PROPOSED STORM MANHOLE
PROPOSED SWALE	PROPOSED SANITARY MANHOLE
PROPOSED PERFORATED SUBDRAIN	PROPOSED CATCH BASIN
EXISTING SPOT ELEVATION	PROPOSED AREA DRAIN (PER CITY STD. S30 & S31)
PROPOSED SPOT ELEVATION	PROPOSED HEAVY DUTY ASPHALT
PROPOSED TOP OF CURB ELEVATION	PROPOSED STREET LIGHT
PROPOSED BOTTOM OF WALL ELEVATION	PROPOSED FIRE HYDRANT
PROPOSED TOP OF WALL ELEVATION	MAJOR SYSTEM FLOW ROUTE
PROPOSED TOP OF LID ELEVATION	EXTERNAL MAJOR FLOW ROUTE
EXISTING GRADE AND DIRECTION	INTERNAL PONDING AREA
PROPOSED GRADE AND DIRECTION	EXTERNAL PONDING AREA
PROPOSED 3:1 TERRACING	CLAY SEAL TO BE INSTALLED AS PER PATERSON GROUP GEOTECHNICAL REPORT PG4064-2 DATED JUNE 25, 2019.
PROPOSED/EXISTING SPOT ELEVATION	FINISHED FLOOR ELEVATION (FFE)
SLAB ON GRADE UNIT	TOP OF FOUNDATION ELEVATION
PEDESTRIAN CROSSWALK	UNDERSIDE OF FOOTING (USF)
DEPRESSED CURB	MINIMUM UNDERSIDE OF FOOTING (MUSF)
BARRIER CURB (CITY STD SC1.1)	COMMUNITY MAILBOX
TWSI (TACTILE WALKING SURFACE INDICATOR)	RIVERSTONE 100mm DIA, 200mm DEEP 1.5m x 1.3m UNLESS OTHERWISE NOTED
	CURB CUT SIZE AS SHOWN SEE DETAIL ON DWS DS-1
	EXTENTS OF CURB, ASPHALT AND SIDEWALK RE-INSTATEMENT BY DEVELOPER. ASPHALT RE-INSTATEMENT TO BE COMPLETED IN SINGLE LIFT OF ASPHALT, REFER TO DS-1 FOR DETAIL

**SITE PLAN INFORMATION**  
SITE PLAN PROVIDED BY KORSIAK URBAN  
DATED FEBRUARY 4, 2020

**GEOTECHNICAL STUDY**  
GEOTECHNICAL RECOMMENDATIONS PROVIDED BY  
PROJ. NO. PG4064-2  
DATED DECEMBER 04, 2019

**BENCH MARK**  
ELEVATIONS ARE GEODETIC, REFERRED TO AN OTTAWA VERTICAL BENCHMARK NO. 396  
ELEV= 95.06 METERS

**SITE SERVICING AND STORMWATER MANAGEMENT RECOMMENDATIONS PROVIDED BY DSEL**  
PROJ. NO. 17-946  
DATED DECEMBER 2019

**DOUGLAS JAMES, MCIP, RPP**  
MANAGER, DEVELOPMENT REVIEW - CENTRAL PLANNING, INFRASTRUCTURE & ECONOMIC DEVELOPMENT  
CITY OF OTTAWA

APPROVED By Jamesdo at 9:52 am, Feb 11, 2020	
8 G.G.G. 20.02.04 ISSUED FOR MUNICIPAL REVIEW	
7 A.J.T. 19.12.19 ISSUED FOR MUNICIPAL REVIEW	
6 A.W.T. 19.12.06 ISSUED FOR MUNICIPAL REVIEW	
5 G.G.G. 19.11.11 ISSUED FOR MUNICIPAL REVIEW	
4 G.G.G. 19.11.01 ISSUED FOR COORDINATION	
3 G.G.G. 19.10.08 ISSUED FOR MUNICIPAL REVIEW	
2 G.G.G. 19.06.28 ISSUED FOR MUNICIPAL REVIEW	
1 S.L.M. 19.02.01 ISSUED FOR MUNICIPAL REVIEW	
No. BY YY.MM.DD DESCRIPTION	

PROJECT No. 17-946

REVIEWED BY

**GRADING PLAN**  
**WATERIDGE - BLOCK 15**  
**245 SQUADRON CRESCENT**

© DSEL

MATTAMY HOMES

50 Hines Road, Suite 100  
Ottawa, Ontario, K2K 2M5  
Tel. (613) 831-5144

**DSEL**  
david schaeffer engineering ltd  
SMART SUBDIVISIONS™

120 Iber Road Unit 103  
Stittsville, Ontario, K2S 1E9  
Tel. (613) 836-0856  
Fax. (613) 836-7183  
www.DSEL.ca

DRAWN BY: B.N.C. CHECKED BY: S.L.M. DRAWING NO. SHEET NO.  
DESIGNED BY: B.N.C. CHECKED BY: S.L.M.  
SCALE: 1:400 DATE: FEBRUARY 2019 GP-1 2 of 14