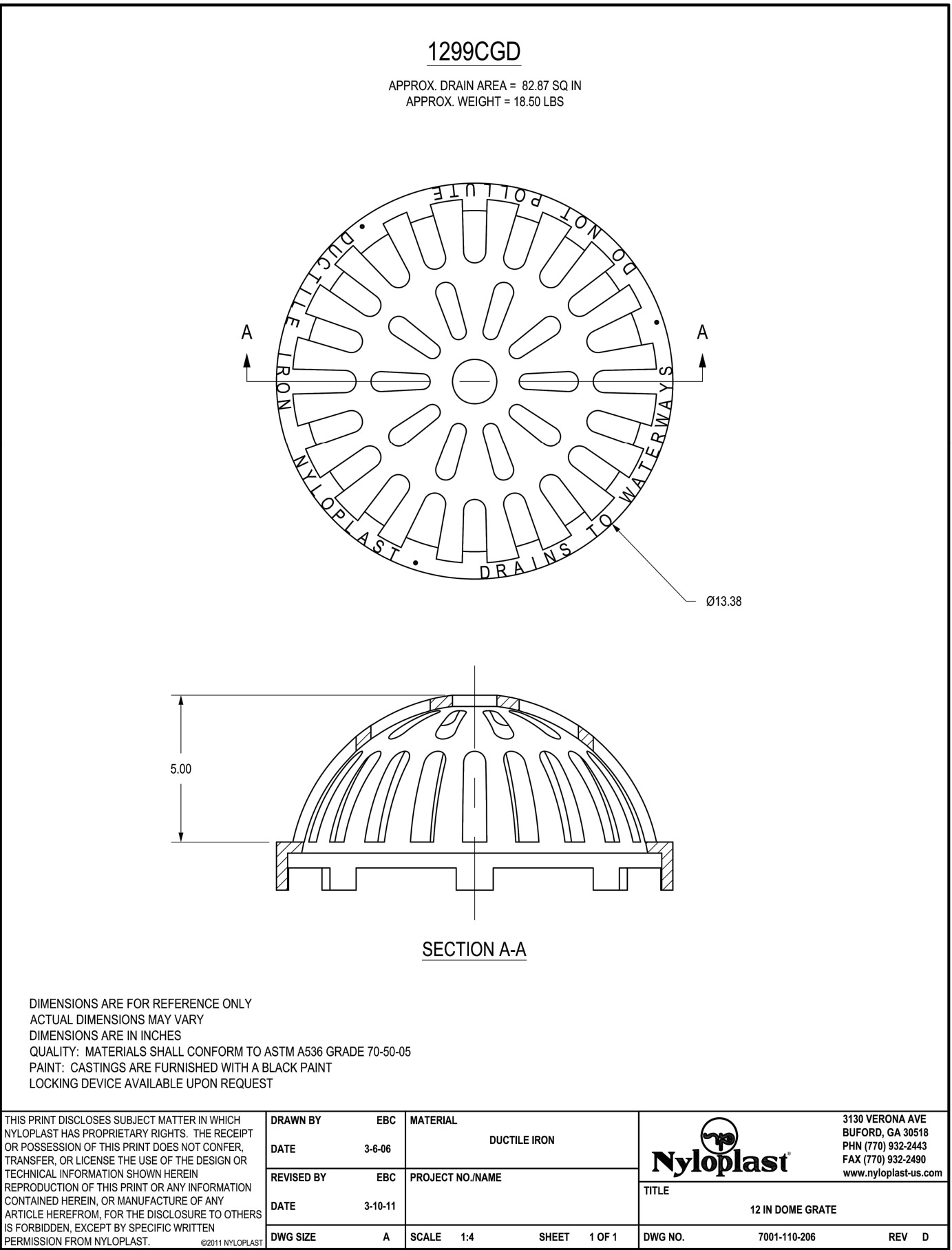
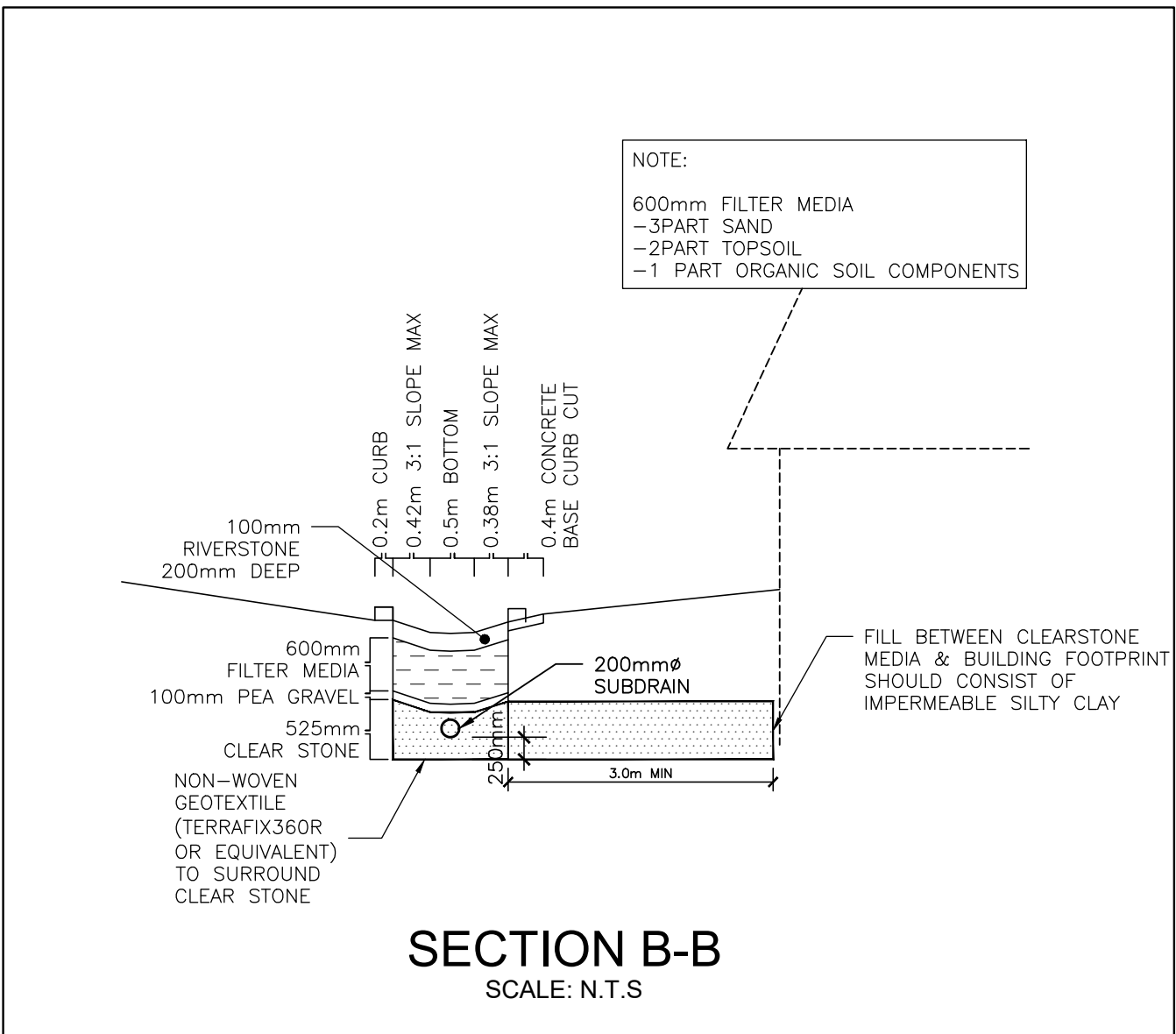
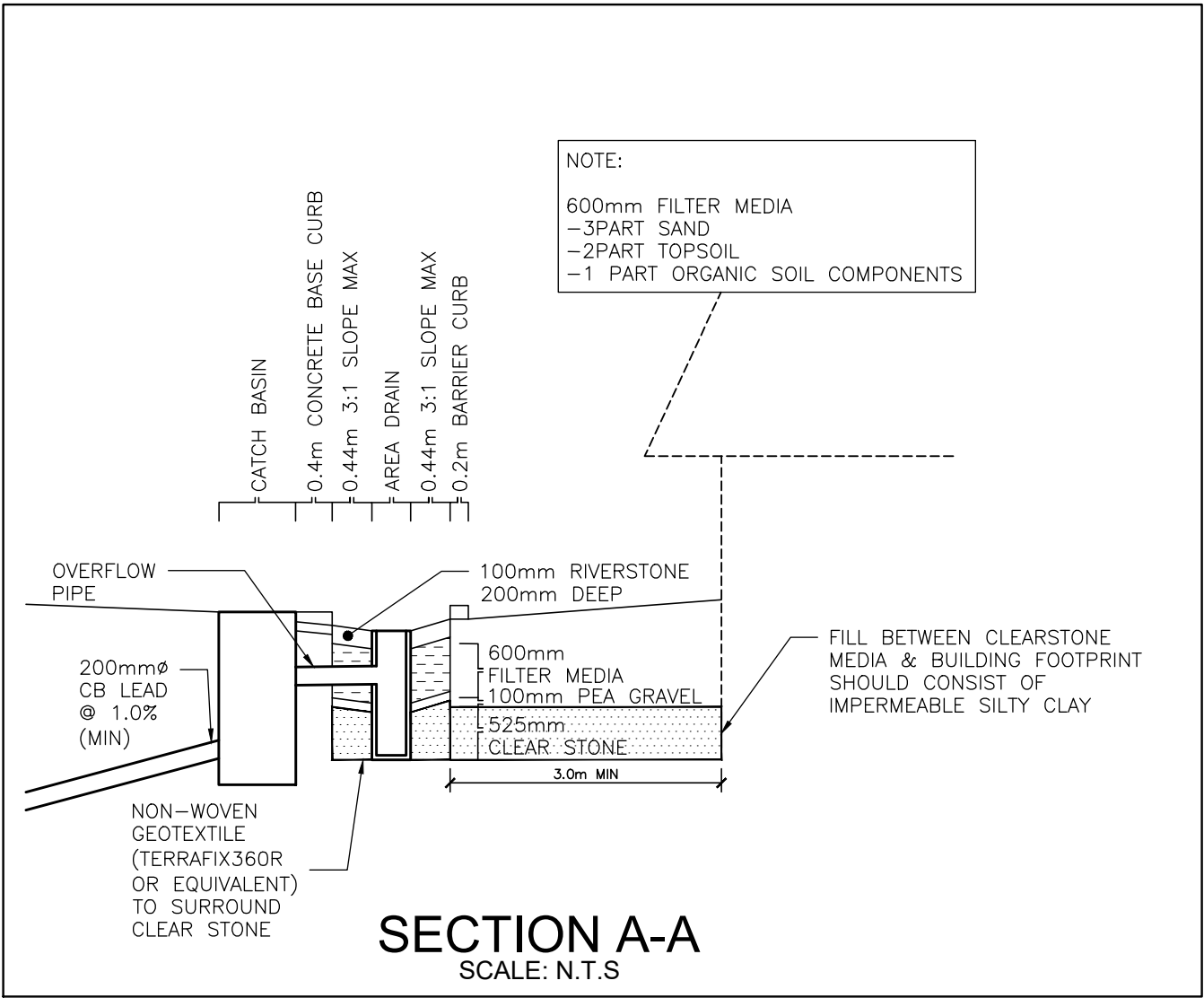
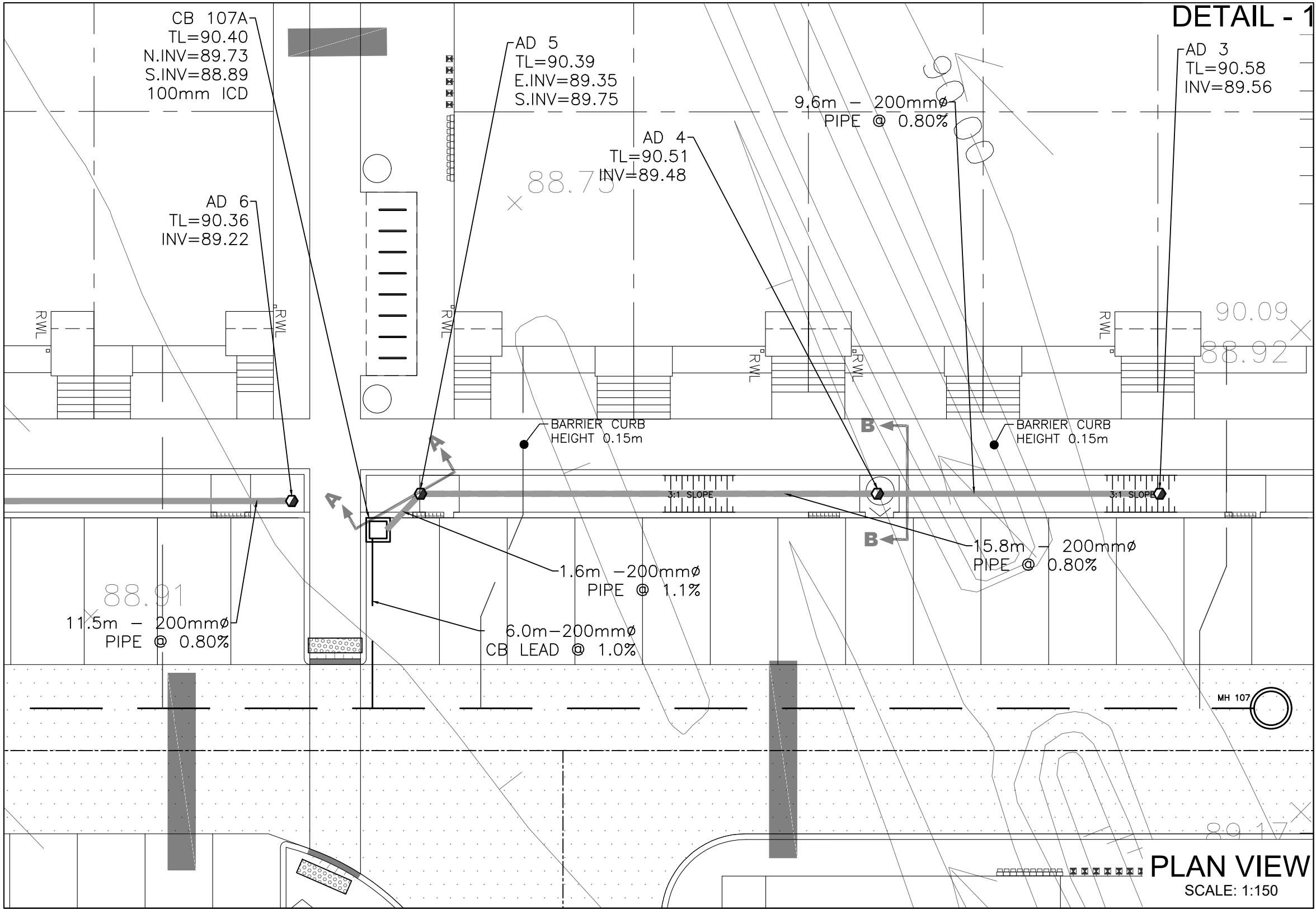

DOUGLAS JAMES, MCIP, RPP
MANAGER, DEVELOPMENT REVIEW - CENTRAL
PLANNING, INFRASTRUCTURE & ECONOMIC
DEVELOPMENT DEPARTMENT, CITY OF OTTAWA

APPROVED
By Jamesdo at 9:49 am, Feb 11, 2020



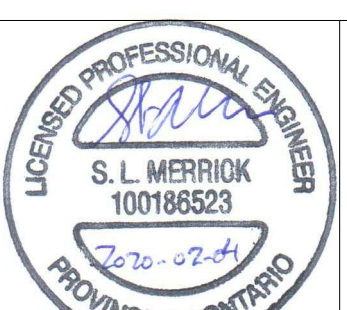
SITE PLAN INFORMATION
SITE PLAN PROVIDED BY KORSIAK URBAN PLANNING
DATED FEBRUARY 4, 2020

GEOTECHNICAL STUDY
GEOTECHNICAL RECOMMENDATIONS PROVIDED BY PATERSON GROUP INC.
PROJ. NO. PG0604-2
DATED DECEMBER 04, 2019

BENCH MARK
ELEVATIONS ARE GEODETIC, REFERRED TO CITY OF OTTAWA VERTICAL BENCHMARK NO. 396
ELEV= 95.06 METERS

SITE SERVICING AND STORMWATER MANAGEMENT STUDY
SERVICING AND STORMWATER MANAGEMENT RECOMMENDATIONS PROVIDED BY DSEL
PROJ. NO. 17-946
DATED DECEMBER 2019

8	G.G.G.	20.02.04	ISSUED FOR MUNICIPAL REVIEW
7	A.J.T.	19.12.19	ISSUED FOR MUNICIPAL REVIEW
6	A.W.T.	19.12.06	ISSUED FOR MUNICIPAL REVIEW
5	G.G.G.	19.11.11	ISSUED FOR MUNICIPAL REVIEW
4	G.G.G.	19.11.01	ISSUED FOR COORDINATION
3	G.G.G.	19.10.08	ISSUED FOR MUNICIPAL REVIEW
2	G.G.G.	19.06.28	ISSUED FOR MUNICIPAL REVIEW
1	S.L.M.	19.02.01	ISSUED FOR MUNICIPAL REVIEW
No.	BY	YY.MM.DD	DESCRIPTION



PROJECT No. 17-946

DETAILS & NOTES
WATERIDGE - BLOCK 15
245 SQUADRON CRESCENT © DSEL

MATTAMY HOMES
50 Hines Road, Suite 100
Ottawa, Ontario, K2K 2M5
Tel. (613) 831-5144

DSEL
david schaeffer engineering ltd
SMART SUBDIVISIONS™

120 Iber Road Unit 103
Stittsville, Ontario, K2S 1E9
Tel. (613) 836-0856
Fax. (613) 836-7183
www.DSEL.ca

DRAWN BY:	B.N.C.	CHECKED BY:	S.L.M.	DRAWING NO.	SHEET NO.
DESIGNED BY:	B.N.C.	CHECKED BY:	S.L.M.		
SCALE:	AS SHOWN 1:400	DATE:	FEBRUARY 2019	DS-2	13 of 14

