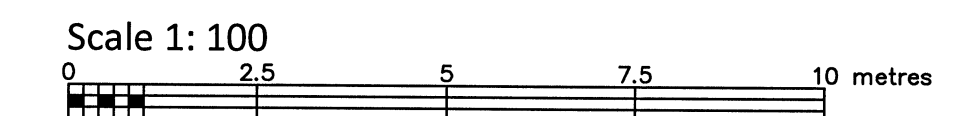


LOTS 1, 2 AND 3 (SOUTH PRETORIA AVENUE) REGISTERED PLAN 53786 CITY OF OTTAWA

FARLEY, SMITH & DENIS SURVEYING LTD. 2019



Metric Note Distances and coordinates on this plan are in metres and can be converted to feet by dividing by 0.3048.

Distance Note Distances shown on this plan are ground distances and can be converted to grid distances by multiplying by the combined scale factor of 0.99994.

Bearing Note Bearings are MTM grid, derived from Smart-Net Real Time Network GPS observations on reference points A and B, shown hereon, having a bearing of N59°19'00" E and are referred to specified control points 01919680005 and 01919680105, MTM Zone 9 (76°30' West Longitude) Nad-83 (Original).

For bearing comparisons, a rotation of 0°01'20" counter-clockwise was applied to bearings on P2. For bearing comparisons, a rotation of 0°03'35" counter-clockwise was applied to bearings on P3. For bearing comparisons, a rotation of 0°35'30" counter-clockwise was applied to bearings on P4. For bearing comparisons, a rotation of 0°00'40" counter-clockwise was applied to bearings on P5. For bearing comparisons, a rotation of 0°00'36" counter-clockwise was applied to bearings on P7.

Elevation Notes 1. Elevations shown are geodetic and are referred to Geodetic Datum CGVD-1928 :1978. 2. Elevations derived from a site benchmark shown on a plan of survey by (1692) dated November 19, 2009 and having a published elevation of 67.98m. (FSD File No. 390-09) 3. It is the responsibility of the user of this information to verify that the job benchmark has not been altered or disturbed and that it's relative elevation and description agrees with the information shown on this drawing.

Utility Notes 1. This drawing cannot be accepted as acknowledging all of the utilities and it will be the responsibility of the user to contact the respective utility authorities for confirmation. 2. Only visible surface utilities were located. 3. Underground utility data derived from City of Ottawa utility sheet reference: Sheet No. F-12-20, F-13-09, Plan No. 2134 sheets 2 and 3 of 6. 4. Sanitary and storm sewer grades and inverts were compiled from: Field measurement & City of Ottawa sheets. 5. A field location of underground plant by the pertinent utility authority is mandatory before any work involving breaking ground, probing, excavating etc.

Table with 3 columns: POINT ID, NORTHING, EASTING. Includes coordinates for points A, B, C, D, E, F, G, H, I, J, K, L, M, N, O, P, Q, R, S, T, U, V, W, X, Y, Z.

- Notes & Legend Denotes Survey Monument Planted, Survey Monument Found, Standard Iron Bar, Short Standard Iron Bar, Iron Bar, Round Iron Bar, Concrete Pin, Witness, Measured, Registered Plan 53786, Plan By (AOG) Dated May 16, 2011 (Job No. 11017-10), Plan By (1692) Dated January 18, 2019 (File No. 608-18), Plan 4R-1976, Plan By (1236) Dated September 9, 1998 (Ref. No. 98-1071), Plan By (1135) Dated October 1, 1986 (Ref. No. J-1149), Plan 4R-2310, Maintenance Hole (Storm), Maintenance Hole (Sanitary), Valve Chamber (Watermain), Underground Storm Sewer, Underground Sanitary Sewer, Underground Water, Overhead Wires, Location of Elevations, Top of Concrete Curb/Retaining Wall Elevation, Utility Pole, Catch Basin, Fire Hydrant, Invert, Top of Grate, Gas Meter, Bell Terminal Box, Cable Terminal Box, Gate, Chain Link Fence, Board Fence, Centreline, Elevation, Top of Foundation, Underside of Eave, Concrete Block Retaining Wall, Timber Retaining Wall, Post and Wire Fence, Deciduous Tree.

WARNING: NO PERSON MAY COPY, REPRODUCE, DISTRIBUTE OR ALTER THIS PLAN IN WHOLE OR IN PART WITHOUT THE WRITTEN PERMISSION OF FARLEY, SMITH & DENIS SURVEYING LTD., 2019.

Surveyor's Certificate I certify that: 1. This survey and plan are correct and in accordance with the Surveys Act, the Surveys Act and the Regulations made under them. 2. The survey was completed on the 31st day of May, 2019. Date: June 11/19 Daniel Robinson Ontario Land Surveyor

FARLEY, SMITH & DENIS SURVEYING LTD. ONTARIO LAND SURVEYORS CANADA LAND SURVEYORS 190 COLONNADE ROAD, OTTAWA, ONTARIO K2E 7J5 TEL. (613) 727-8226 FAX. (613) 727-1826

