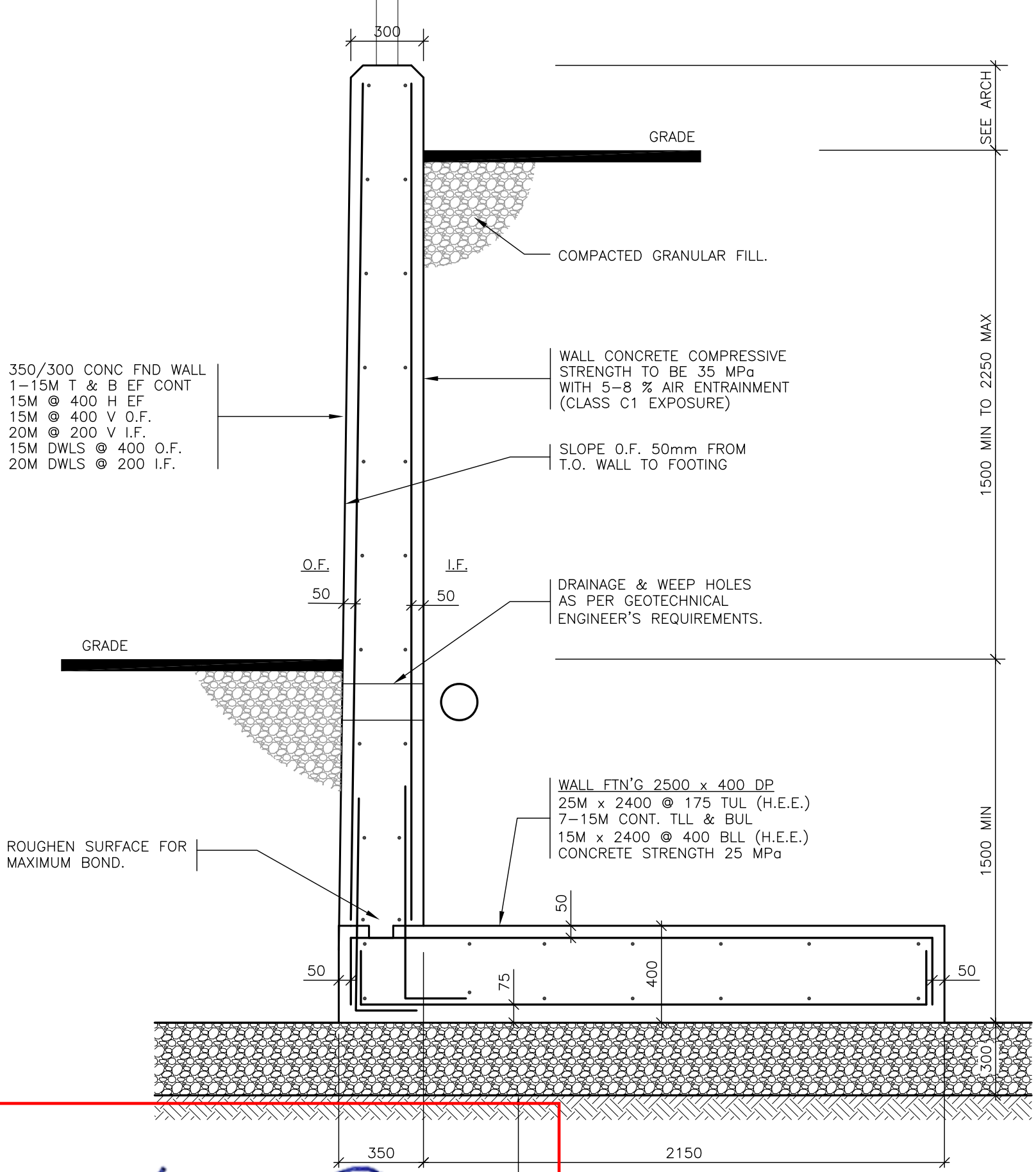


NEW GUARD TO CONFORM TO LATEST ONTARIO BUILDING CODE REQUIREMENTS. DESIGN TO BE STAMPED AND SEALED BY A PROFESSIONAL ENGINEER LICENSED IN THE PROVINCE OF ONTARIO.

NOTES:
REFER TO ARCHITECTURAL DRAWINGS FOR EXPOSED CONCRETE FINISHES, REVEALS, SEALING & DAMPROOFING REQUIREMENTS

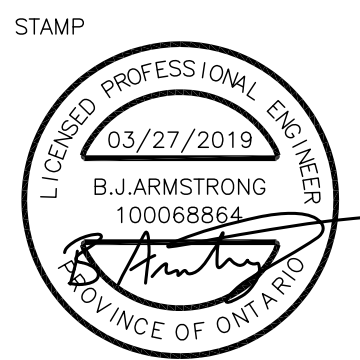


[Handwritten signature]

TYPICAL SECTION @ RETAINING WALL - CONDITION A (HIGH GRADE DIFFERENCE)

LILY XU, MCIP, RPP
(A) MANAGER, DEVELOPMENT REVIEW - SOUTH PLANNING, INFRASTRUCTURE & ECONOMIC DEVELOPMENT DEPARTMENT, CITY OF OTTAWA

APPROVED
By Lily Xu at 11:11 am, Jan 29, 2020



CUNLIFFE TEL 729-7242 FAX 728-1461
CUNLIFFE & ASSOCIATES
CONSULTING STRUCTURAL ENGINEERS
102-1737 WOODWARD DR. OTTAWA ON. K2C 0P9

| No. | DESCRIPTION | M / D / Y |
|-----|----------------------------------|------------|
| 1 | ISSUED FOR SITE PLAN APPROVAL | 01/29/2018 |
| 2 | RE-ISSUED FOR SITE PLAN APPROVAL | 03/27/2019 |

| |
|--|
| TITLE: RETAINING WALL - CONDITION A |
| PROJECT: 2510 WALKLEY ROAD |
| ARCHITECT: CHRISTOPHER SIMMONDS ARCHITECT INC. |

| |
|--------------------|
| DATE: MAR 27, 2019 |
| PROJ No.: 18-006 |
| DWG. No.: SK1 |