

Part	Area (sq.m.)
Part 1, 3 & 5	211.5
Part 2	248.4
Part 4 and 6	122.4
Part 7	85.4

REQUIRE THIS PLAN TO BE DEPOSITED UNDER THE LAND TITLES ACT.
DATE: _____

REPRESENTATIVE FOR THE LAND REGISTRAR FOR THE CITY OF OTTAWA
E.H. HERWEYER
ONTARIO LAND SURVEYOR

REPRESENTATIVE FOR THE LAND REGISTRAR FOR THE CITY OF OTTAWA
E.H. HERWEYER
ONTARIO LAND SURVEYOR

SCHEDULE			
PART	LOT	PLAN	PIN
1	PART OF 12 SOUTH YORK STREET		
2	PART OF 12 SOUTH YORK STREET		PART OF 04215-0135
3	PART OF 12 SOUTH YORK STREET		
4	PART OF 11 SOUTH YORK STREET	42482	PART OF 04215-0118
5	PART OF 12 SOUTH YORK STREET		PART OF 04215-0135
6	PART OF 11 SOUTH YORK STREET		PART OF 04215-0118
7	PART OF 11 SOUTH YORK STREET		ALL OF 04215-0119

Parts 1, 2, 3 & 5 comprise all of PIN 04215-0135.
Parts 4 & 6 comprise all of PIN 04215-0118.

PLAN OF SURVEY OF PART OF LOTS 11 AND 12 (SOUTH YORK STREET) REGISTERED PLAN 42482 CITY OF OTTAWA
Surveyed by Annis, O'Sullivan, Vollebek Ltd.

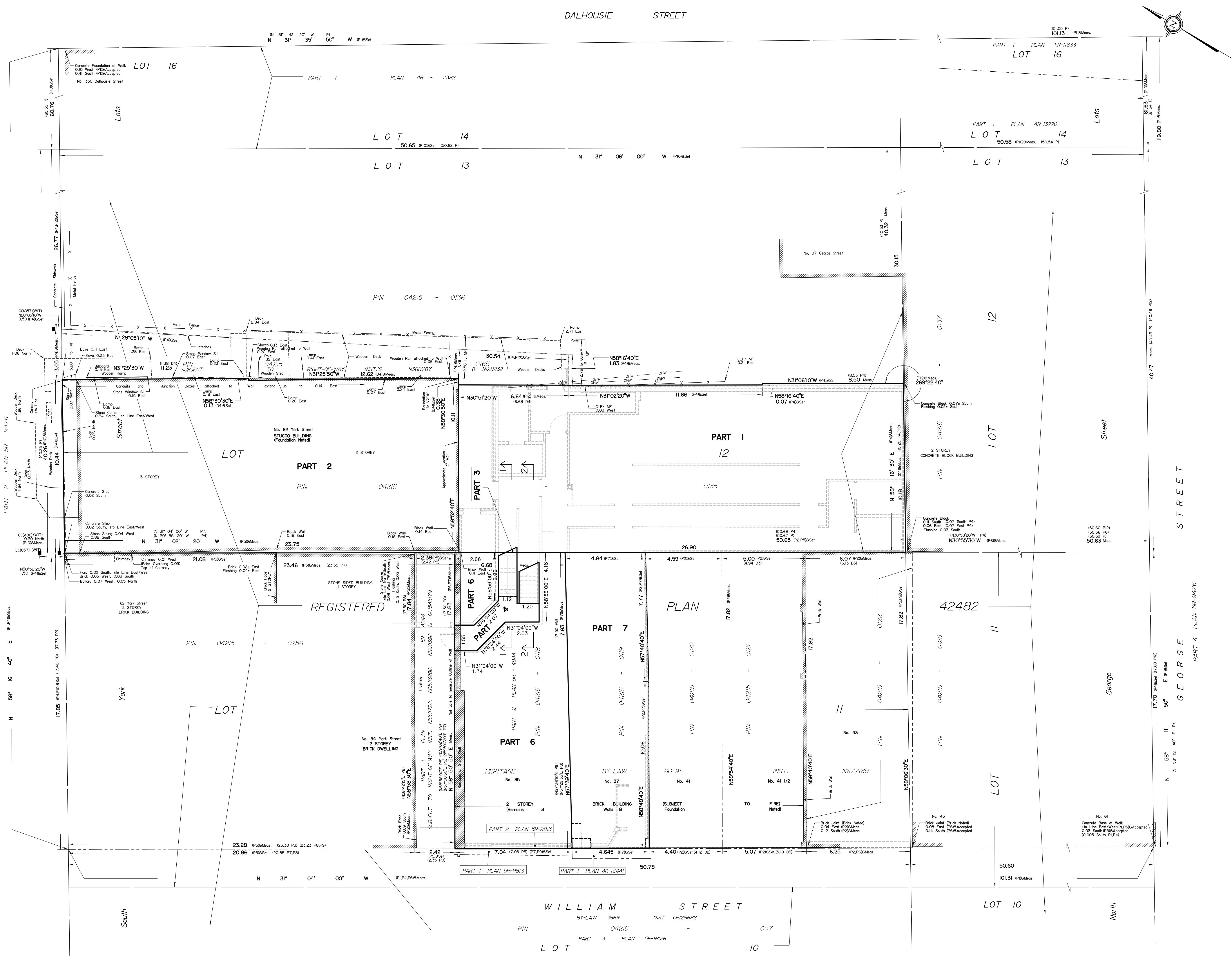
Scale 1:100
Metric
DISTANCES AND COORDINATES SHOWN ON THIS PLAN ARE IN METRES AND CAN BE CONVERTED TO FEET BY DIVIDING BY 0.3048.

Surveyor's Certificate
I CERTIFY THAT:
1. This survey and plan are correct and in accordance with the Survey Act, the Surveyors Act and the Land Titles Act and the regulations made under them.
2. This survey was completed on the _____ day of November, 2019.

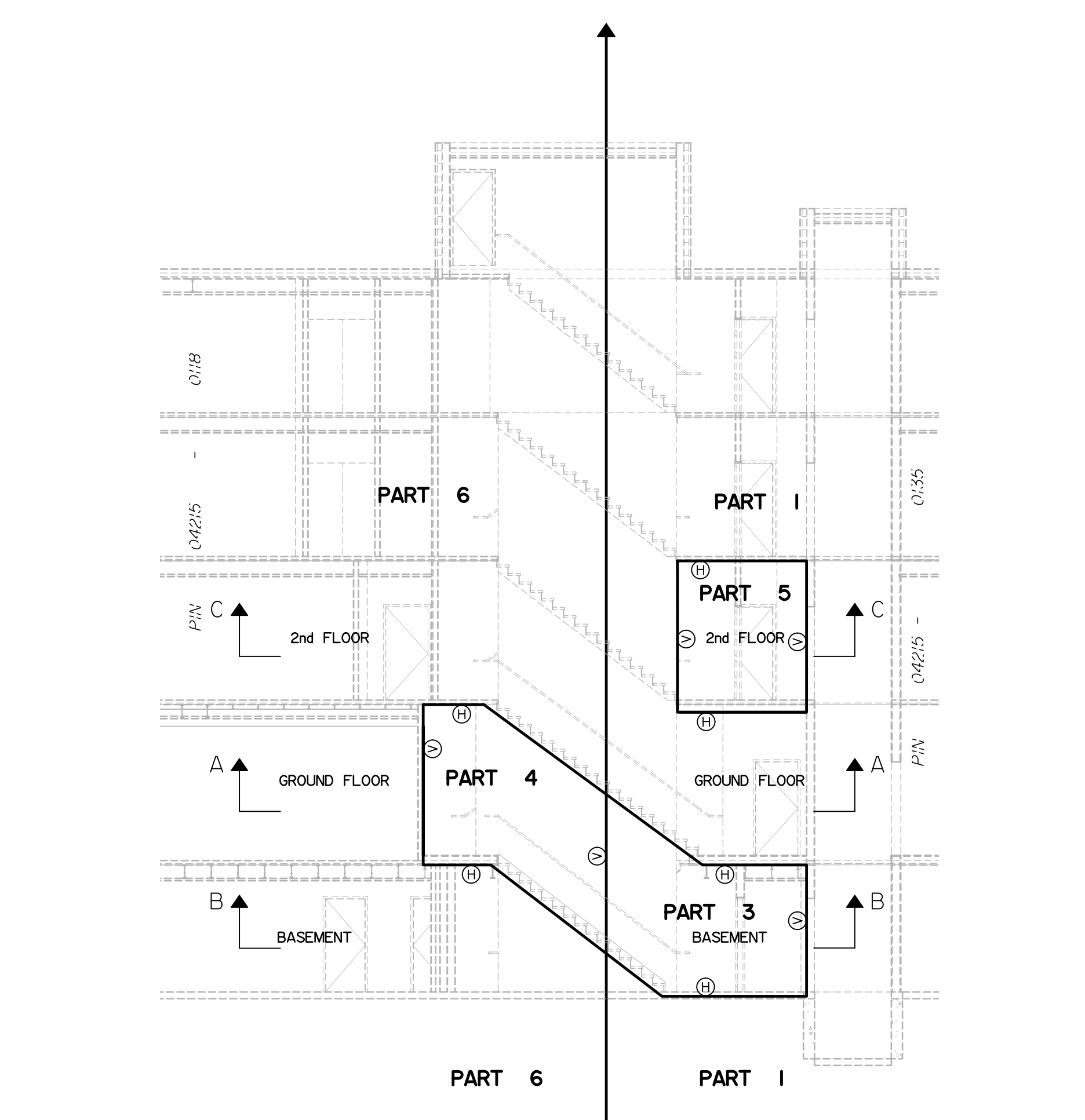
Date: _____
E.H. Herweyer
Ontario Land Surveyor

Notes & Legend
Parts 1, 3, 4, 5, 6 are vertically limited.
Distances shown on this plan are ground distances and can be converted to grid distances by multiplying by the combined scale factor of 0.99993.
Bearings are grid, derived from Can-Net 2016 Real Time Network GPS observations on reference points A and B, shown hereon, having a bearing of Nxx°xx'xx"W and are referenced to Specified Control Points 0191980005 and 0191980105, MTM Zone 18 (18°30' West Longitude) NAD-83 (original).
For bearing comparisons, a rotation of 0.4227° counter-clockwise was applied to bearings on plans P. P1, P2, P4, P5, P7, P10.
0.0772° counter-clockwise was applied to bearings on plan P8.
Coordinates are derived from Can-Net 2016 Real Time Network GPS observations referenced to Specified Control Points 0191980005 and 0191980105, MTM Zone 18 (18°30' West Longitude) NAD-83 (original).
Coordinate values are to urban accuracy in accordance with O. Reg. 216/10.
- 0191980005 Northing 5027181.28 Easting 361494.76
- 0191980105 Northing 5024815.16 Easting 373971.65
- Point A Northing Easting
- Point B Northing Easting
Caution: Coordinates control, in themselves, be used to re-establish corners or boundaries shown on this plan.

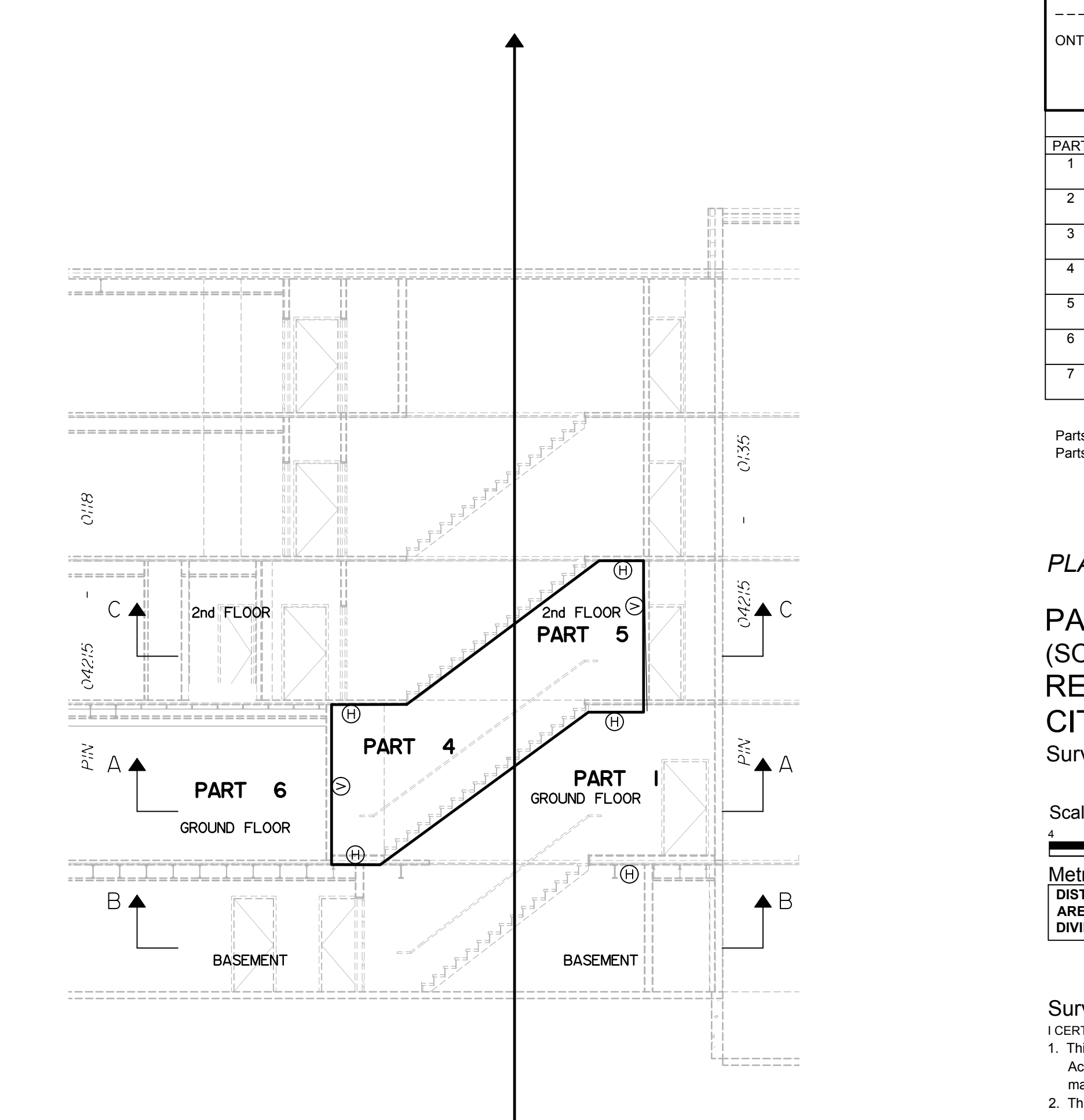
- Notes & Legend
- Control Survey Monument Planted
 - Survey Monument Found
 - Standard Iron Bar
 - Short Standard Iron Bar
 - |— Iron Bar
 - C— Cast Iron
 - W— Witness
 - (W1) Arnie O'Sullivan, Vollebek Ltd.
 - (W2) Mumm
 - (W3) Registered Plan 42482
 - (P1) Plan SR-4029
 - (P2) IACO Plan April 28, 1999
 - (P3) 48-18441
 - (P4) 1851 Plan September 7, 2007
 - (P5) IACO Plan May 9, 1995
 - (P6) IACO Plan November 17, 2006
 - (P7) (1851) Plan November 1, 2000
 - (P8) Plan SR-4844
 - (P9) Plan SR-4813
 - (P10) 1851 Plan September 24, 1980, Revised July 7, 1981
 - (D1) NS113342
 - (D2) NS90390 & 90380
 - (D3) CPT19592
 - (D4) Int. NS93787 & Int. NS128232
 - CLF Chain Link Fence
 - MF Metal Fence
 - GM Gas Meter



PLAN VIEW FOR THE PERIMETER AND DIAGRAM A: PLAN VIEW OF CONFIGURATION OF PARTS AT GROUND FLOOR



SECTION 1-1: PLAN VIEW OF CONFIGURATION OF PARTS AT BASEMENT



SECTION 2-2: PLAN VIEW OF CONFIGURATION OF PARTS AT 2nd FLOOR

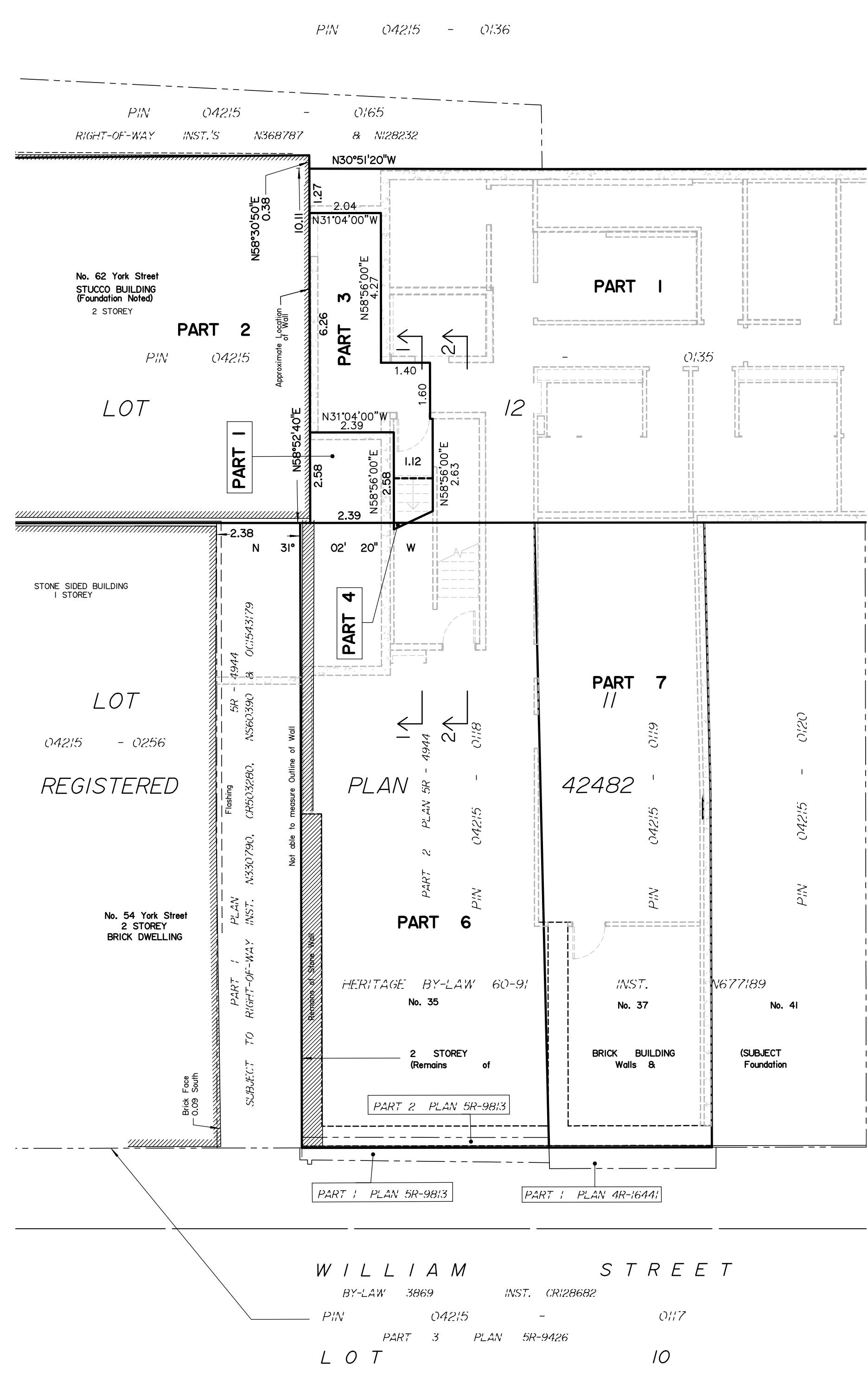


DIAGRAM B: PLAN VIEW OF CONFIGURATION OF PARTS AT BASEMENT

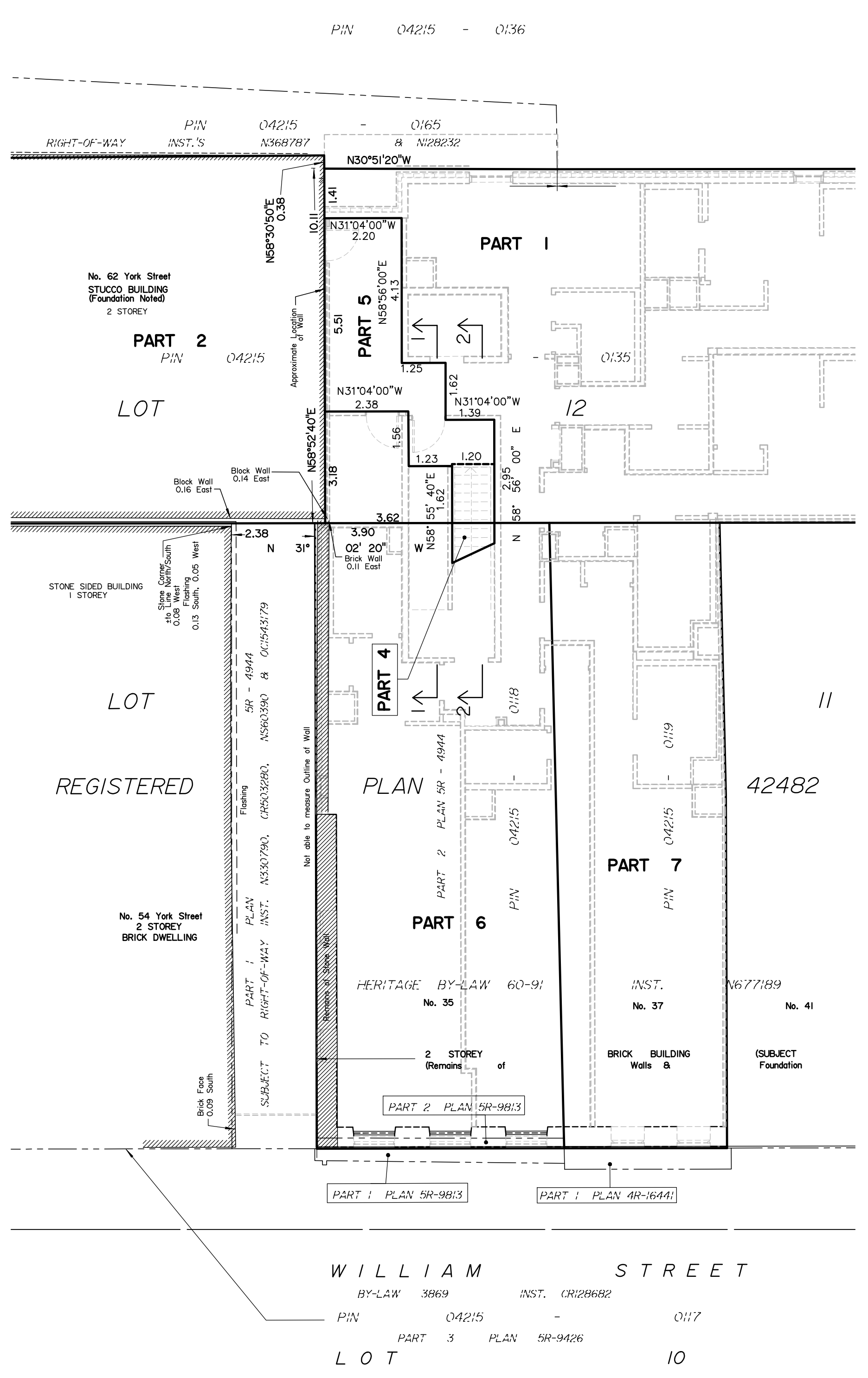


DIAGRAM C: PLAN VIEW OF CONFIGURATION OF PARTS AT 2nd FLOOR

ELEVATION NOTES
1. Elevations shown are geoidic and are referred to the CGVD25 geoidic datum, derived from vertical control monument No. 201 with an elevation of 65.69 metres.