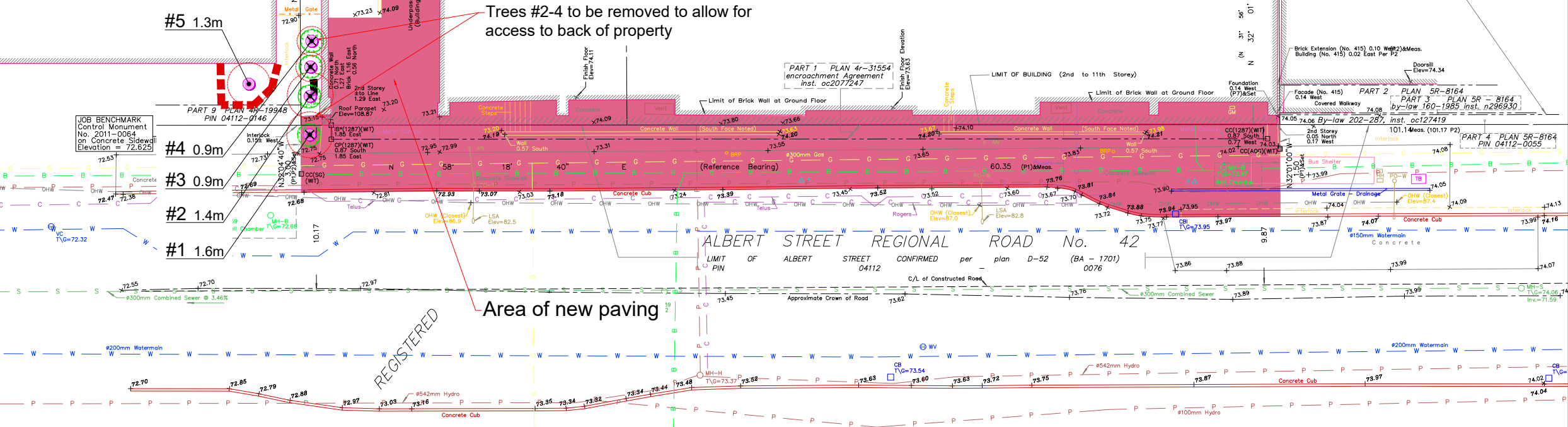


OTTAWA CARLETON STANDARD  
CONDOMINIUM PLAN 696  
PIN 15696 - 0001 to 0320

OTTAWA CARLETON STANDARD  
CONDOMINIUM PLAN 711  
SUBJECT TO EASEMENT INST'S  
OC357571, OC384051 AND OC475598  
PIN 15711 - 0001 to 0216  
15 Storey Building



NOTES: Tree locations not surveyed, locations are field measured by the arborist. Work location estimated from clients provided site plan.

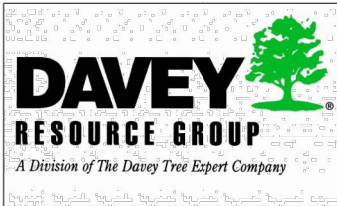
- All field data have been recorded by Kyle Gibson ISA Certified Arborist® ON-2141A. All tree locations are based on the survey supplied by the client and field observation by the arborist.
- This plan shall be used in conjunction with the Tree Protection Action Key (TPAK). Specific information regarding tree species, condition, and protection protocols are listed therein.
- Refer to the Arborist Report prepared for this project for specific instruction regarding tree protection requirements.

#### PLAN KEY

- TREE RECOMMENDED FOR REMOVAL
- RETAINED TREE
- CONIFEROUS TREE FOR REMOVAL
- RETAINED CONIFEROUS TREE
- REPLACEMENT TREE
- RETAINED HEDGEROW
- HEDGEROW FOR REMOVAL
- TREE PROTECTION FENCE
- CRITICAL ROOT ZONE



No.	DATE	BY	REVISIONS
1	11/29/2019	JCS	Tree Protection Plan



TITLE:  
**473 Albert Street  
Ottawa, ON**

CLIENT:  
**Forest and Field Landscape Architects  
c/o Matthew Sweig**

DRAWING NO.:	001	SCALE:	1:300
JOB NO.:		SHEET:	1 OF 3

#### ELEVATION NOTES

- Elevations shown are geodetic and are referred to the CGVD28 geodetic datum, derived from control monument No. 2011-0064 having an elevation of 72.625 metres.
- It is the responsibility of the user of this information to verify that the job benchmark has not been altered or disturbed and that the relative elevation and description agrees with the information shown on this drawing.

#### UTILITY NOTES

- This drawing cannot be accepted as acknowledging all of the utilities and it will be the responsibility of the user to contact the respective utility authorities for confirmation.
- Only visible surface utilities were located.
- Underground utility data derived from City of Ottawa utility sheet reference D-11-18 & D-11-13.
- Sanitary and storm sewer inverts were derived from City of Ottawa Plans.
- A field location of underground plant by the pertinent utility authority is



Tree Map Number	Species	Botanical	DBH (cm) @ 1.4 m	Tree Category	Critical Root Zone - Ottawa Specifications (m)	Health	Structure	Overall Condition	Live Crown Ratio (%)	Deadwood (%)	Crown Width (m)	Tree Height (m)	Construction inside Min TPZ	Construction Impact (None, Low, Medium, High)	Hoarding Required (Y/N)	Removal (Y/N)	Observations and Recommendations
1	Amur Maple	<i>Acer ginnala</i>	16	City Owned	1.6	Good	Fair	Good	50	5	4	5	Y	H	N	Y	Located within area to be paved; removal required under scope of work
2	Amur Maple	<i>Acer ginnala</i>	14	Private	1.4	Good	Fair	Good	50	5	4	5	Y	H	N	Y	Removal required for access to rear of property
3	Amur Maple	<i>Acer ginnala</i>	9	Private	0.9	Good	Fair	Good	50	0	3	5	Y	H	N	Y	Removal required for access to rear of property
4	Amur Maple	<i>Acer ginnala</i>	9	Private	0.9	Good	Fair	Good	50	5	3	5	Y	H	N	Y	Removal required for access to rear of property
5	Flowering Crabapple	<i>Malus sylvestris</i>	13	Neighbour	1.3	Good	Good	Good	60	10	4	5	N	N	Y	N	Full protection behind fencing recommended

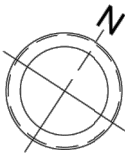


NOTES: Tree locations not surveyed, locations are field measured by the arborist. Work location estimated from clients provided site plan.

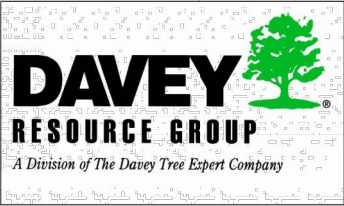
- All field data have been recorded by Kyle Gibson ISA Certified Arborist® ON-2141A. All tree locations are based on the survey supplied by the client and field observation by the arborist.
- This plan shall be used in conjunction with the Tree Protection Action Key (TPAK). Specific information regarding tree species, condition, and protection protocols are listed therein.
- Refer to the Arborist Report prepared for this project for specific instruction regarding tree protection requirements.

PLAN KEY

- TREE RECOMMENDED FOR REMOVAL
- RETAINED TREE
- CONIFEROUS TREE FOR REMOVAL
- RETAINED CONIFEROUS TREE
- REPLACEMENT TREE
- RETAINED HEDGEROW
- HEDGEROW FOR REMOVAL
- TREE PROTECTION FENCE
- CRITICAL ROOT ZONE

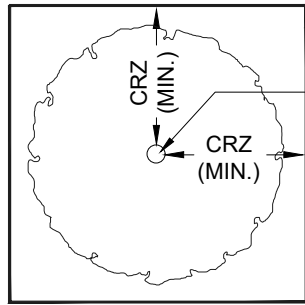


No.	DATE	BY	REVISIONS
1	11/29/2019	JCS	Tree Protection Plan



TITLE: 473 Albert Street Ottawa, ON	
CLIENT: Forest and Field Landscape Architects c/o Matthew Sweig	
DRAWING NO.: 001	SCALE: 1:300
JOB NO.:	SHEET: 2 OF 3



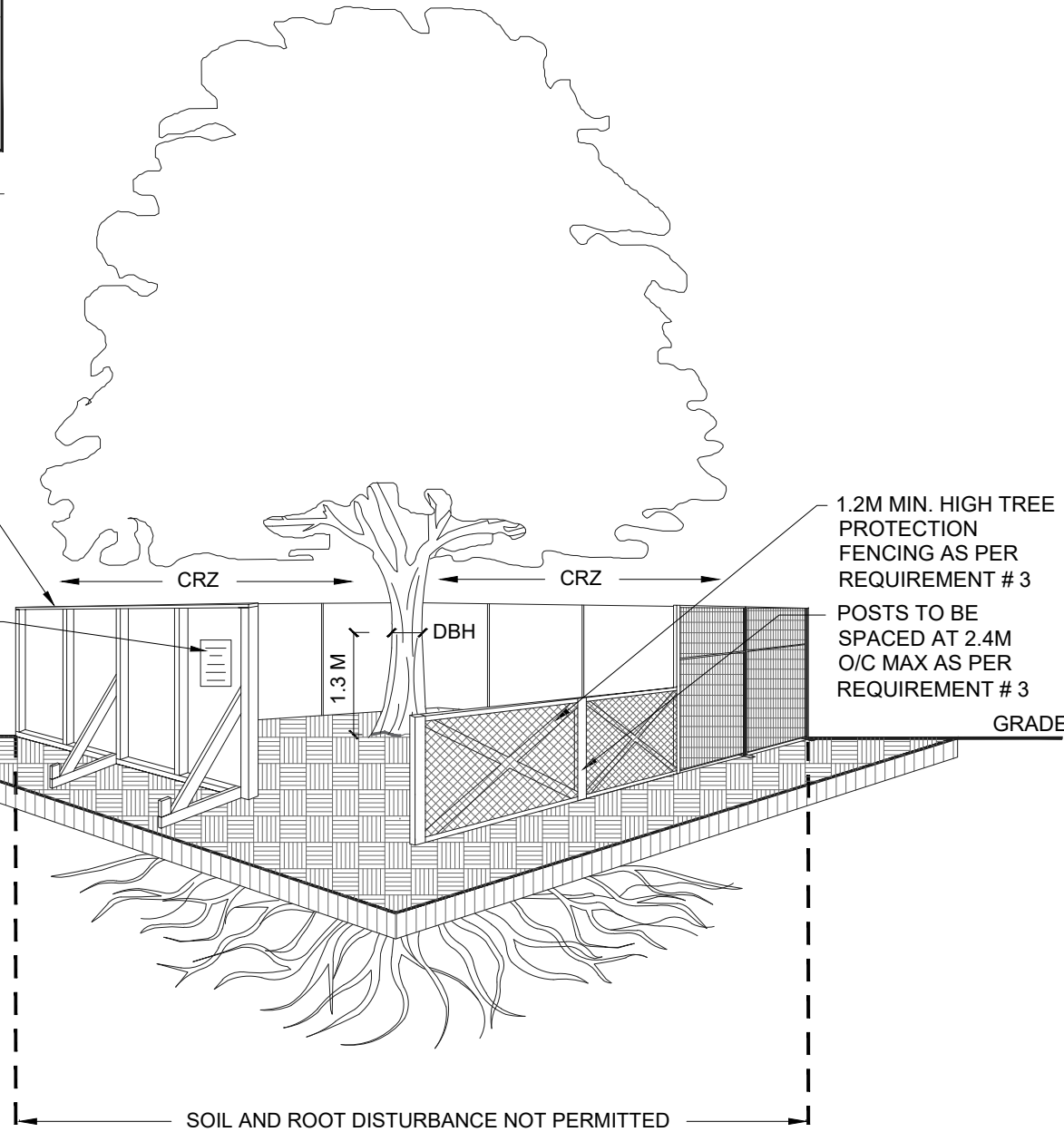


PLAN VIEW

CRZ = DBH X 10CM.  
CRZ IS TO BE  
MEASURED FROM THE  
OUTSIDE EDGE OF  
THE TREE BASE

TREE PROTECTION  
SIGNAGE AS PER  
CITY STANDARD

GRADE



SOIL AND ROOT DISTURBANCE NOT PERMITTED

ACCESSIBLE FORMATS AND COMMUNICATION  
SUPPORTS ARE AVAILABLE, UPON REQUEST



## TREE PROTECTION SPECIFICATION

TO BE IMPLEMENTED FOR RETAINED TREES, BOTH ON SITE AND ON ADJACENT SITES, PRIOR  
TO ANY TREE REMOVAL OR SITE WORKS AND MAINTAINED FOR THE DURATION OF WORK  
ACTIVITIES ON SITE.

### TREE PROTECTION REQUIREMENTS:

1. PRIOR TO ANY WORK ACTIVITY WITHIN THE CRITICAL ROOT ZONE (CRZ = 10 X DIAMETER) OF A TREE, TREE PROTECTION FENCING MUST BE INSTALLED SURROUNDING THE CRITICAL ROOT ZONE, AND REMAIN IN PLACE UNTIL THE WORK IS COMPLETE.
2. UNLESS PLANS ARE APPROVED BY CITY FORESTRY STAFF, FOR WORK WITHIN THE CRZ:
  - DO NOT PLACE ANY MATERIAL OR EQUIPMENT - INCLUDING OUTHOUSES;
  - DO NOT ATTACH ANY SIGNS, NOTICES OR POSTERS TO ANY TREE;
  - DO NOT RAISE OR LOWER THE EXISTING GRADE;
  - TUNNEL OR BORE WHEN DIGGING;
  - DO NOT DAMAGE THE ROOT SYSTEM, TRUNK, OR BRANCHES OR ANY TREE;
  - ENSURE THAT EXHAUST FUMES FROM ALL EQUIPMENT ARE NOT DIRECTED TOWARD ANY TREE CANOPY.
  - DO NOT EXTEND HARD SURFACE OR SIGNIFICANTLY CHANGE LANDSCAPING
3. TREE PROTECTION FENCING MUST BE AT LEAST 1.2M IN HEIGHT, AND CONSTRUCTED OF RIGID OR FRAMED MATERIALS (E.G. MODULOC - STEEL, PLYWOOD HOARDING, OR SNOW FENCE ON A 2"X4" WOOD FRAME) WITH POSTS 2.4M APART, SUCH THAT THE FENCE LOCATION CANNOT BE ALTERED. ALL SUPPORTS AND BRACING MUST BE PLACED OUTSIDE OF THE CRZ, AND INSTALLATION MUST MINIMISE DAMAGE TO EXISTING ROOTS. (SEE DETAIL)
4. THE LOCATION OF THE TREE PROTECTION FENCING MUST BE DETERMINED BY AN ARBORIST AND DETAILED ON ANY ASSOCIATED PLANS FOR THE SITE ( E.G. TREE CONSERVATION REPORT, TREE DISCLOSURE REPORT, ETC). THE PLAN AND CONSTRUCTED FENCING MUST BE APPROVED BY CITY FORESTRY STAFF PRIOR TO THE COMMENCEMENT OF WORK.
5. IF THE FENCED TREE PROTECTION AREA MUST BE REDUCED TO FACILITATE CONSTRUCTION, MITIGATION MEASURES MUST BE PRESCRIBED BY AN ARBORIST AND APPROVED BY CITY FORESTRY STAFF. THESE MAY INCLUDE THE PLACEMENT OF PLYWOOD, WOOD CHIPS, OR STEEL PLATING OVER THE ROOTS FOR PROTECTION OR THE PROPER PRUNING AND CARE OF ROOTS WHERE ENCOUNTERED.

### BY-LAWS

ALL CITY-OWNED TREES ARE PROTECTED UNDER THE MUNICIPAL TREES AND NATURAL AREAS PROTECTION BY-LAW (2006-279). WITHIN THE URBAN AREA, PRIVATELY-OWNED TREES GREATER THAN 50CM DIAMETER ON LOTS 1HA IN SIZE OR LESS, AND TREES GREATER THAN 10CM DIAMETER ON LOTS >1HA, ARE PROTECTED UNDER THE URBAN TREE CONSERVATION BY-LAW (2009-200).

NOTES: Tree locations not surveyed, locations are field measured by the arborist. Work location estimated from clients provided site plan.

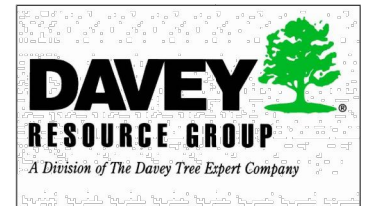
- All field data have been recorded by Kyle Gibson ISA Certified Arborist® ON-2141A. All tree locations are based on the survey supplied by the client and field observation by the arborist.
- This plan shall be used in conjunction with the Tree Protection Action Key (TPAK). Specific information regarding tree species, condition, and protection protocols are listed therein.
- Refer to the Arborist Report prepared for this project for specific instruction regarding tree protection requirements.

### PLAN KEY

- TREE RECOMMENDED FOR REMOVAL
- RETAINED TREE
- CONIFEROUS TREE FOR REMOVAL
- RETAINED CONIFEROUS TREE
- REPLACEMENT TREE
- RETAINED HEDGEROW
- HEDGEROW FOR REMOVAL
- TREE PROTECTION FENCE
- CRITICAL ROOT ZONE



No.	DATE	BY	REVISIONS
1	11/29/2019	JCS	Tree Protection Plan



TITLE: 473 Albert Street Ottawa, ON	
CLIENT: Forest and Field Landscape Architects c/o Matthew Sweig	
DRAWING NO.: 001	SCALE: 1:300
JOB NO.:	SHEET: 3 OF 3

SCALE: NTS

DATE: MAY 2019

DRAWING NO.: 1 of 1