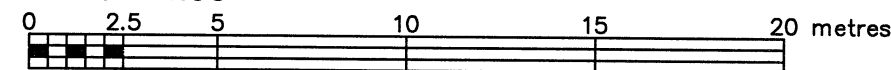


TOPOGRAPHIC PLAN OF SURVEY OF

LOT 2 AND PART OF LOT 1 (WEST BRUNEL STREET) REGISTERED PLAN 22 CITY OF OTTAWA

FARLEY, SMITH & DENIS SURVEYING LTD. 2019
Scale 1: 200

**Metric Note**

Distances and coordinates on this plan are in metres and can be converted to feet by dividing by 0.3048.

Distance Note

Distances shown on this plan are ground distances and can be converted to grid distances by multiplying by the combined scale factor of 0.99995.

Bearing Note

Bearings hereon are grid bearings derived from the northerly limit of Part 2 having a bearing of N 71° 16' 10" E as shown on Plan 5R-7048 and are referred to the Central Meridian of MTM Zone 9 (76° 30' West Longitude) Nad-83 (Original).

Elevation Notes

- Elevations shown are geodetic and are referred to Geodetic Datum CGVD-1928 :1978. (FSD File No. 551-05)
- It is the responsibility of the user of this information to verify that the job benchmark has not been altered or disturbed and that its relative elevation and description agrees with the information shown on this drawing.

Utility Notes

- This drawing cannot be accepted as acknowledging all of the utilities and it will be the responsibility of the user to contact the respective utility authorities for confirmation.
- Only visible surface utilities were located.
- Underground utility data derived from City of Ottawa utility sheet reference: Plans E4C, C-22-11 & C-22-12.
- Sanitary and storm sewer grades and inverts were derived from: Field measurement
- A field location of underground plant by the pertinent utility authority is mandatory before any work involving breaking ground, probing, excavating etc.

Notes & Legend

Denotes	
Survey Monument Planted	□
Survey Monument Found	■
Standard Iron Bar	SIB
Short Standard Iron Bar	SSIB
Iron Bar	IB
Round Iron Bar	IBØ
Origin Unknown	(OU)
Witness	(Wit)
Measured	Meas
Accepted	Acc.
Registered Plan 22	(P1)
Plan 5R-7048	(P2)
Plan 4R-9583	(P3)
Plan by (1692) dated Sept.22, 2016 (File No.03-16)	(P4)
Maintenance Hole (Sanitary)	○ MH-S
Maintenance Hole (Traffic)	○ MH-T
Valve Chamber (Watermain)	⊕ VC
Underground Storm Sewer	— ST —
Underground Sanitary Sewer	— S —
Underground Water	— W —
Underground Gas	— G —
Underground Bell	— B —
Overhead Wires	— OHW —
Utility Pole	○ UP
Anchor	○ AN
Catch Basin	□ CB
Fire Hydrant	⊕ FH
Gas Meter	⊕ GM
Traffic Signal Post	⊕ TSP
Bollard	○ B
Diameter	⊕ D
Board Fence	BF
Invert	Inv.
Top of Grate	T/G
Underside of Eave	U/Eave
Top of Foundation	TpFdn
Centreline	C/L
Location of Elevations	+ 65.00
Top of Concrete Curb Elevation	+ 65.00
Deciduous Tree	⊗
Coniferous Tree	⊗*

Surveyor's Certificate

I certify that:

- This survey and plan are correct and in accordance with the Surveys Act, the Surveyors Act and the Regulations made under them.
- The survey was completed on the 24th day of May, 2019.

May 27/19
Date

Jamie Leslie
Jamie Leslie
Ontario Land Surveyor

ASSOCIATION OF ONTARIO
LAND SURVEYORS
PLAN SUBMISSION FORM

2088432



THIS PLAN IS NOT VALID UNLESS
IT IS AN EMBOSSED ORIGINAL COPY
ISSUED BY THE SURVEYOR
In accordance with
Regulation 1026, Section 29 (3).

FARLEY, SMITH & DENIS SURVEYING LTD.

ONTARIO LAND SURVEYORS
CANADA LAND SURVEYORS

190 COLONNADE ROAD, OTTAWA, ONTARIO K2E 7J5
TEL. (613) 727-8226 FAX. (613) 727-1826

FILE No.: 167-19

WARNING NO PERSON MAY COPY, REPRODUCE, DISTRIBUTE OR ALTER THIS PLAN IN WHOLE OR IN PART WITHOUT THE WRITTEN PERMISSION OF FARLEY, SMITH & DENIS SURVEYING LTD.
© FARLEY, SMITH & DENIS SURVEYING LTD., 2019.