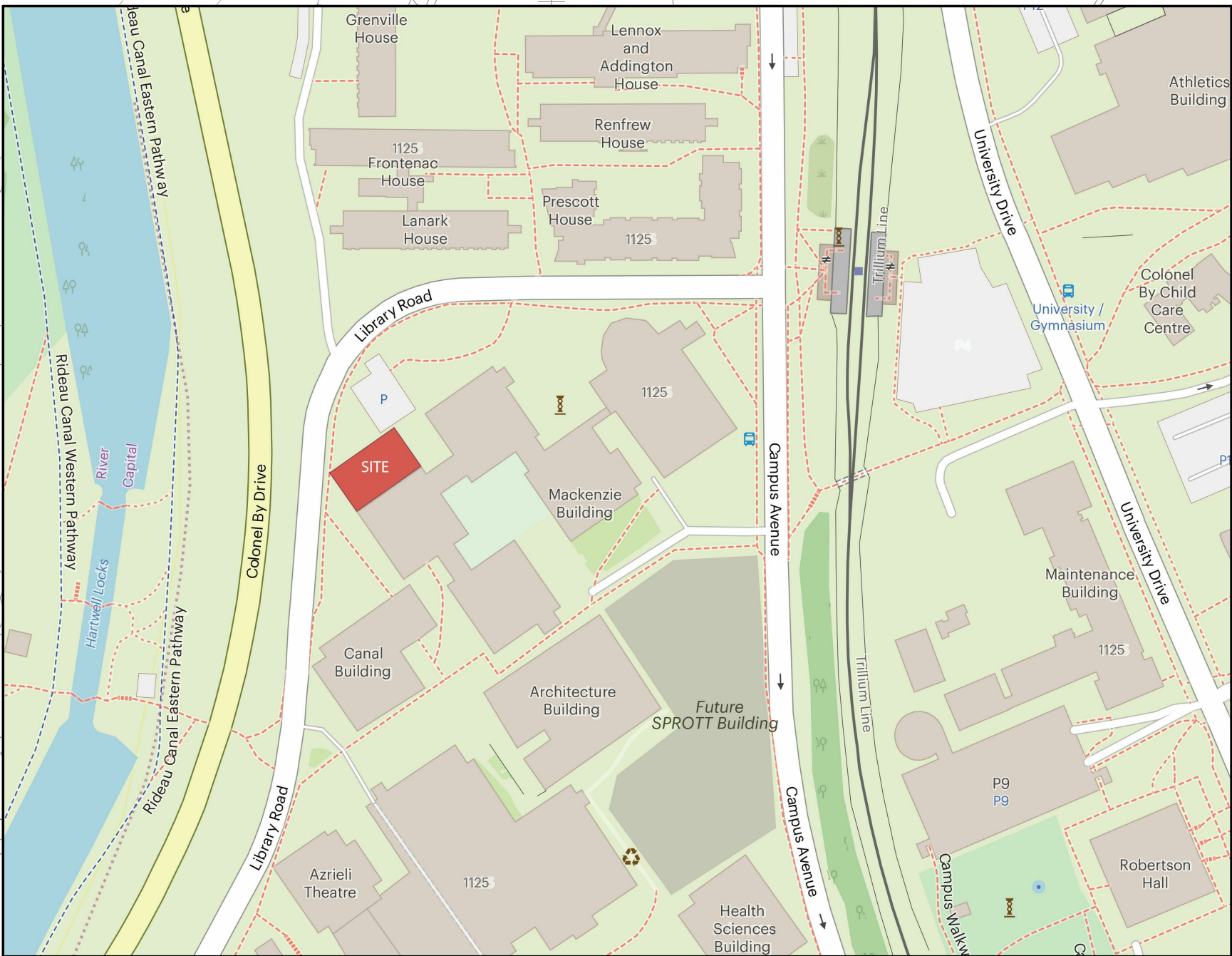


C:\Users\saungu\Documents\Print Files\1934-Building_Asaungu.rvt

10/4/2019 6:42:42 PM



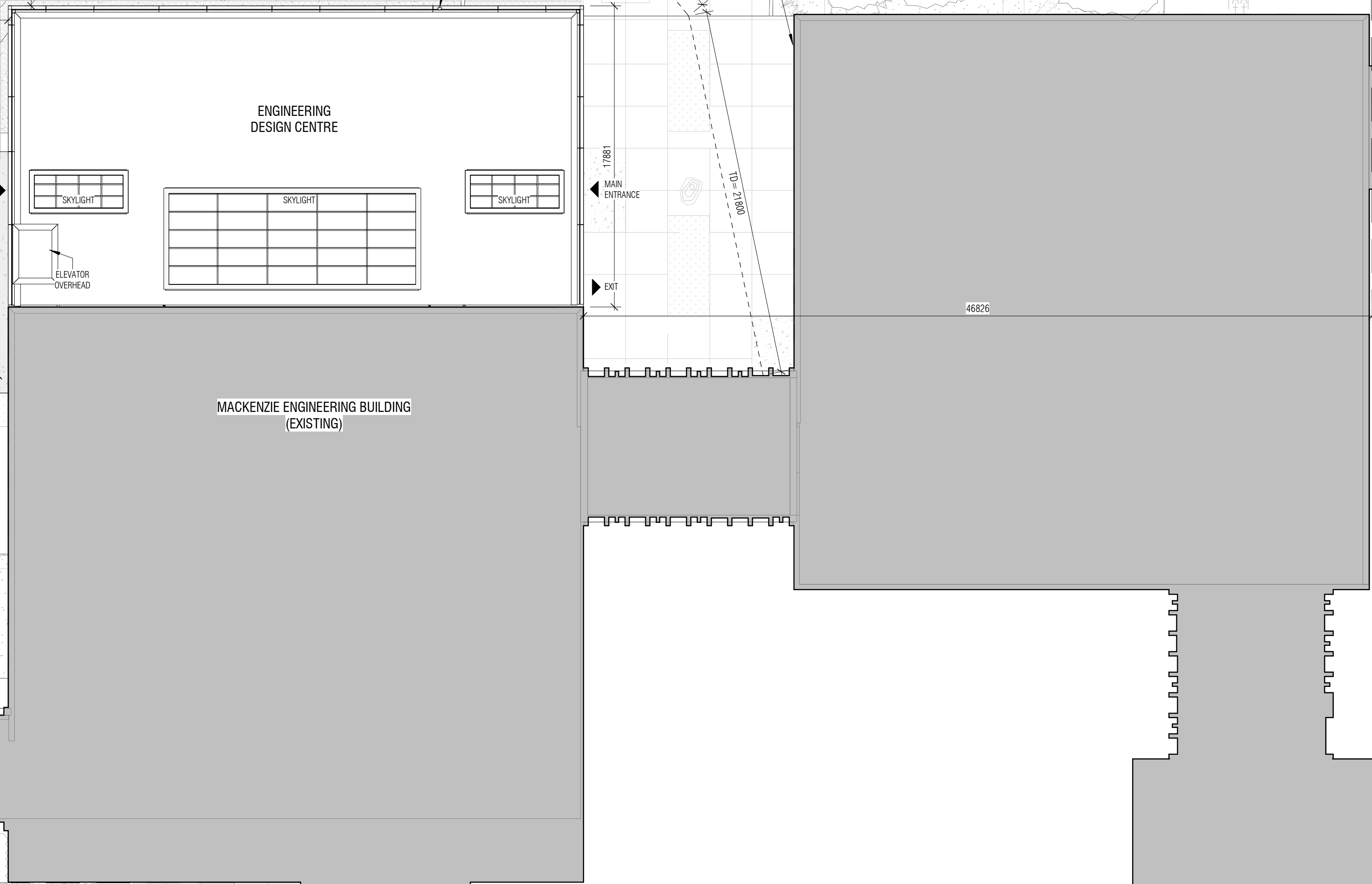
CONTEXT MAP
NTS

Building Statistics / Zoning Matrix		
Municipality:	City of Ottawa	
Municipal Address:	1125 Colonel By Drive - Mackenzie Building Addition	
Registered Owner:	Carleton University	
Lot Area:	> 11050 m ² *	
Ottawa Zoning By-Law:	2008-250	
Zoning:	I2A F1.5	
Proposed Use:	Academic Institutional	
	Required	Provided
Minimum Lot Width	No minimum	> 90.14 m
Minimum Lot Area	No minimum	> 11050 m ² *
Minimum Required Setbacks		
Front and corner Yard	7.5m	11.56 m
Corner Yard	7.5m	9.19 m
Interior Side Yard	7.5m	> 46.78 m *
Rear Yard	7.5m	N/A
Maximum Building Height	No maximum	12.78m
Parking Spaces	Not required	0
Bicycle Parking	Not required	0

*Indicates dimension to project specific parcel edge, dimension to lot line is greater.

GROSS FLOOR AREA SCHEDULE (ZBL 2008-250).	
Name	Area
LEVEL 200	403.62 m ²
LEVEL 300	313.88 m ²
LEVEL 400	360.32 m ²
	1077.81 m ²

SITE PLAN DEVELOPED BASED ON SITE SURVEY BY FAIRHALL, MOFFATT & WOODLAND LIMITED.
PART OF LOT M
CONCESSION B (RIDEAU FRONT)
GEOGRAPHIC TOWNSHIP OF NEPEAN
CITY OF OTTAWA
REFERENCE NO. 140-B/RFP/JP



CONTRACTOR MUST CHECK & VERIFY ALL DIMENSIONS ON THE JOB.

DO NOT SCALE DRAWINGS.

ALL DRAWINGS, SPECIFICATIONS AND RELATED DOCUMENTS ARE THE COPYRIGHT PROPERTY OF THE ARCHITECT AND MUST BE RETURNED UPON REQUEST. REPRODUCTION OF DRAWINGS, SPECIFICATIONS AND RELATED DOCUMENTS IN PART OR IN WHOLE IS FORBIDDEN WITHOUT THE WRITTEN PERMISSION OF THE ARCHITECT.

THIS DRAWING IS NOT TO BE USED FOR CONSTRUCTION UNTIL SIGNED BY THE ARCHITECT.

ISSUED

No.	Date	Description
2	2019-10-04	ISSUED FOR SITE PLAN CONTROL

NOTES:

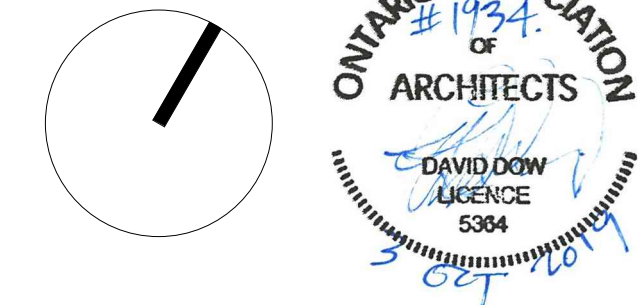
1. REFER TO LANDSCAPE DRAWINGS.

GENERAL NOTES - PLANS:

- REFER TO BUILDING ELEMENTS SCHEDULE FOR EXTERIOR WALL, PARTITION, ROOF, CEILING AND SOFFIT TYPES.
- REFER TO MECHANICAL AND ELECTRICAL DRAWINGS FOR ADDITIONAL REQUIREMENTS.
- AT LOCATIONS WHERE MECH. DUCTS INTERFERE WITH FULL HEIGHT CONSTRUCTION OF INTERIOR PARTITIONS, OFFSET PARTITION ABOVE CEILING AND BRACE AS REQUIRED. MAINTAIN FIRE SEPARATION/SOUND RATING OF PARTITION. OFFSETTING OF PARTITIONS WILL ONLY BE PERMITTED WHERE DUCTWORK CANNOT BE POSITIONED.
- ALL DIMENSIONS ARE TAKEN TO FACE OF MASONRY OR CONCRETE AT MASONRY AND CONCRETE WALLS AND PARTITIONS. AT STEEL STUD PARTITIONS, DIMENSIONS ARE TAKEN TO FACE OF GYPSUM BOARD, UNLESS OTHERWISE NOTED.
- INCREASE THICKNESS OF WALLS OR FLUR OUT WALL THICKNESS AS REQUIRED TO ACCOMMODATE MECHANICAL AND ELECTRICAL PANELS AND SERVICES. MAINTAIN FIRE SEPARATION AROUND BACK OF PANELS WHERE APPLICABLE.
- FOR DIMENSIONS OF CONCRETE REFER TO SLAB EDGE DRAWINGS.

Architects in joint venture for the Carleton University Engineering Design Centre.
Diamond Schmitt Architects
384 Adelaide Street West
Suite 100
Toronto, Ontario
M5V 1R7 Canada
Tel: 416 862 8800
Fax: 416 862 5508
info@dsai.ca
www.dsai.ca

KWC Architects Inc.
383 Parkdale Avenue
Suite 201
Ottawa, Ontario
K1P 1K4 Canada
Tel: 613 238 2117
Fax: 613 238 6995
kwc@kwc-arch.com
www.kwc-arch.com



Carleton University Engineering
Design Centre

1125 Colonel By Drive
Ottawa, Ontario
K1S 5B6

SITE PLAN

Scale: As indicated
Project No: 1934
Date: