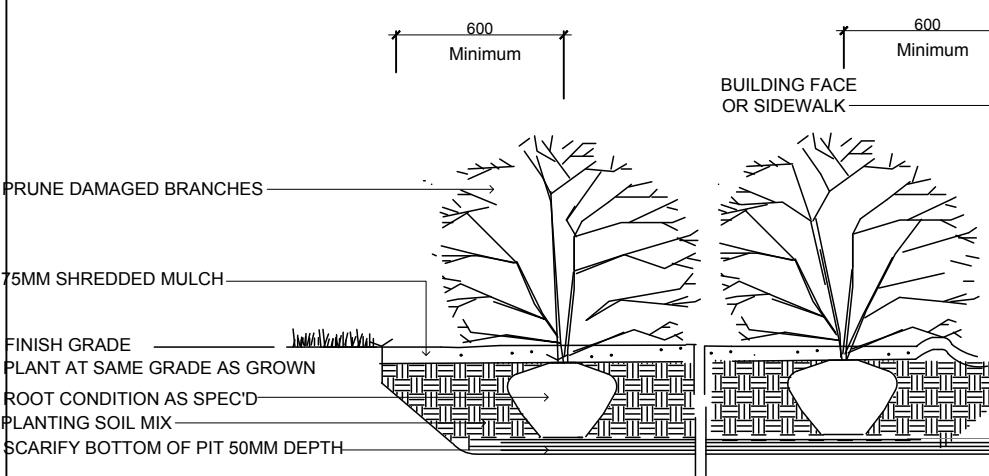
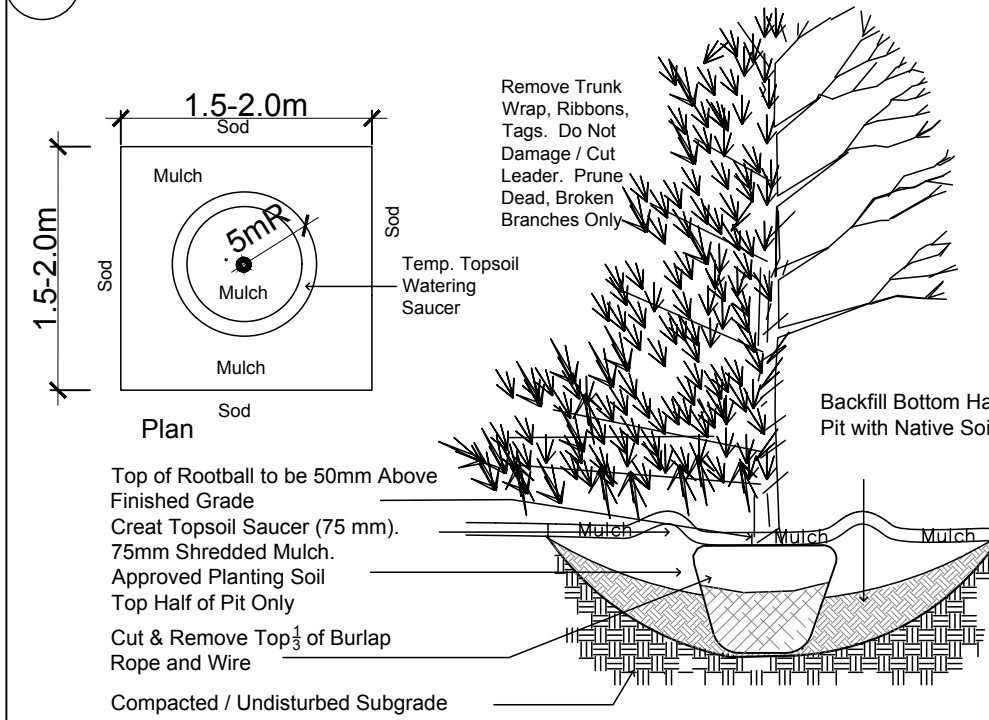


TYPICAL PLANTING BED  
During Excavation/Bed Preparation if Extreme Conditions are Encountered (Water, Rock, Gravel...) that Could Effect Planting, Notify GJALA Immediately.



SHRUB PLANTING

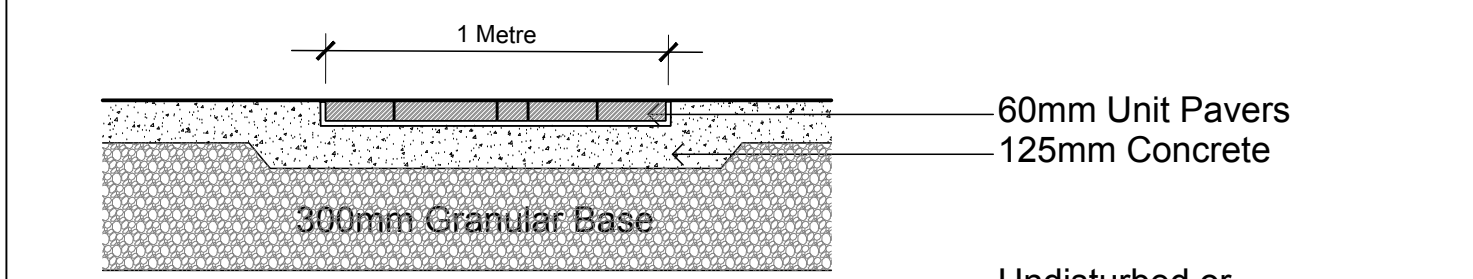


TREE PLANTING

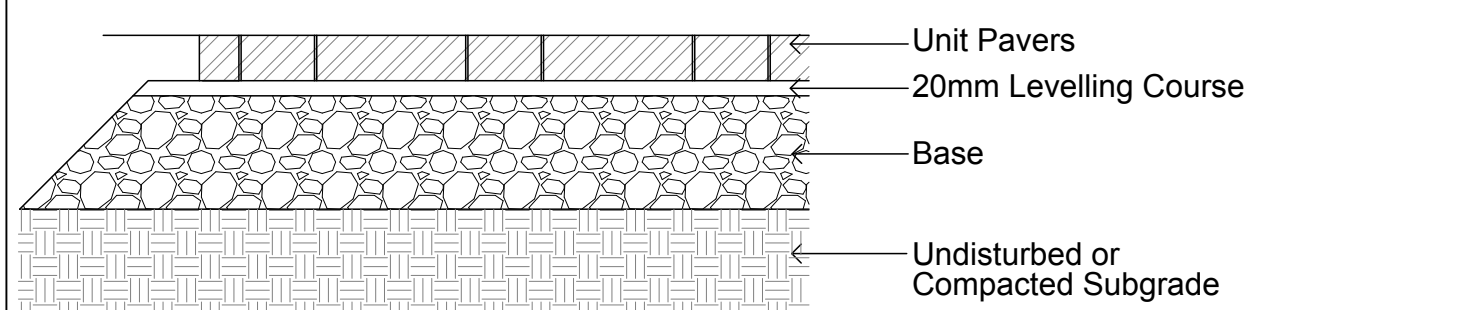
Section

Plant List - Trees - RIDEAU AND CHAPEL TRINITY DEVELOPMENT					
Code	Qty.	Botanical Name	Common Name	Size	Condition
AC	3	Amelanchier canadensis	Tree Serviceberry	60mm cal	B + B specimen
AG	6	Aesculus glabra	Ohio Buckeye	60mm cal	B + B specimen
AR	1	Acer rubrum	Red Maple	60mm cal	B + B specimen
AS	1	Acer saccharum	Sugar Maple	60mm cal	B + B specimen
CO	6	Celtis occidentalis	Common Hackberry	60mm cal	B + B specimen
CR	1	Cornus racemosa	Grey Dogwood	60mm cal	B + B specimen
CC	1	Crataegus crus-galli 'Inermis'	Thornless Cockspur Hawthorn	60mm cal	B + B specimen
PP	1	Prunus pennsylvanica	Pin Cherry	60mm cal	B + B specimen
SR	6	Syringa reticulata	Japanese Tree Lilac	30mm cal	B + B specimen
VL	1	Viburnum lentago	Nannyberry	60mm cal	B + B specimen
AB	3	Abies balsamea	Balsam Fir	1.5m Ht.	B + B specimen
JV	3	Juniperus virginiana	Eastern Red Cedar	1.5m Ht.	B + B specimen
LL	3	Larix laricina	Eastern Larch / Tamarack	1.5m Ht.	B + B specimen
PG	3	Picea glauca	White Spruce	1.5m Ht.	B + B specimen

Plant List - Shrubs - RIDEAU AND CHAPEL TRINITY DEVELOPMENT				
Code	Qty.	Botanical Name	Common Name	Condition
BT	100	Berberis thunbergii	Barberry	Pot
HK	650	Hypericum kalmianum	St. John's Wort	Pot
SA	200	Spiraea alba	Meadowsweet	Pot



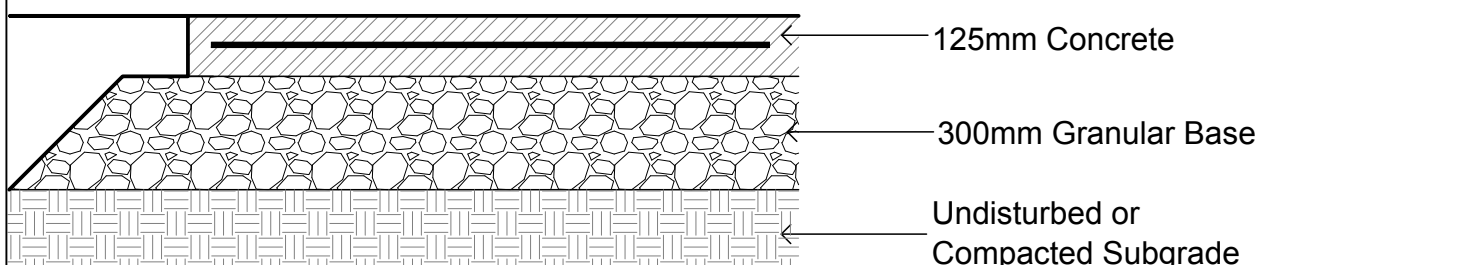
UNIT PAVING WITHIN CONCRETE



UNIT PAVING

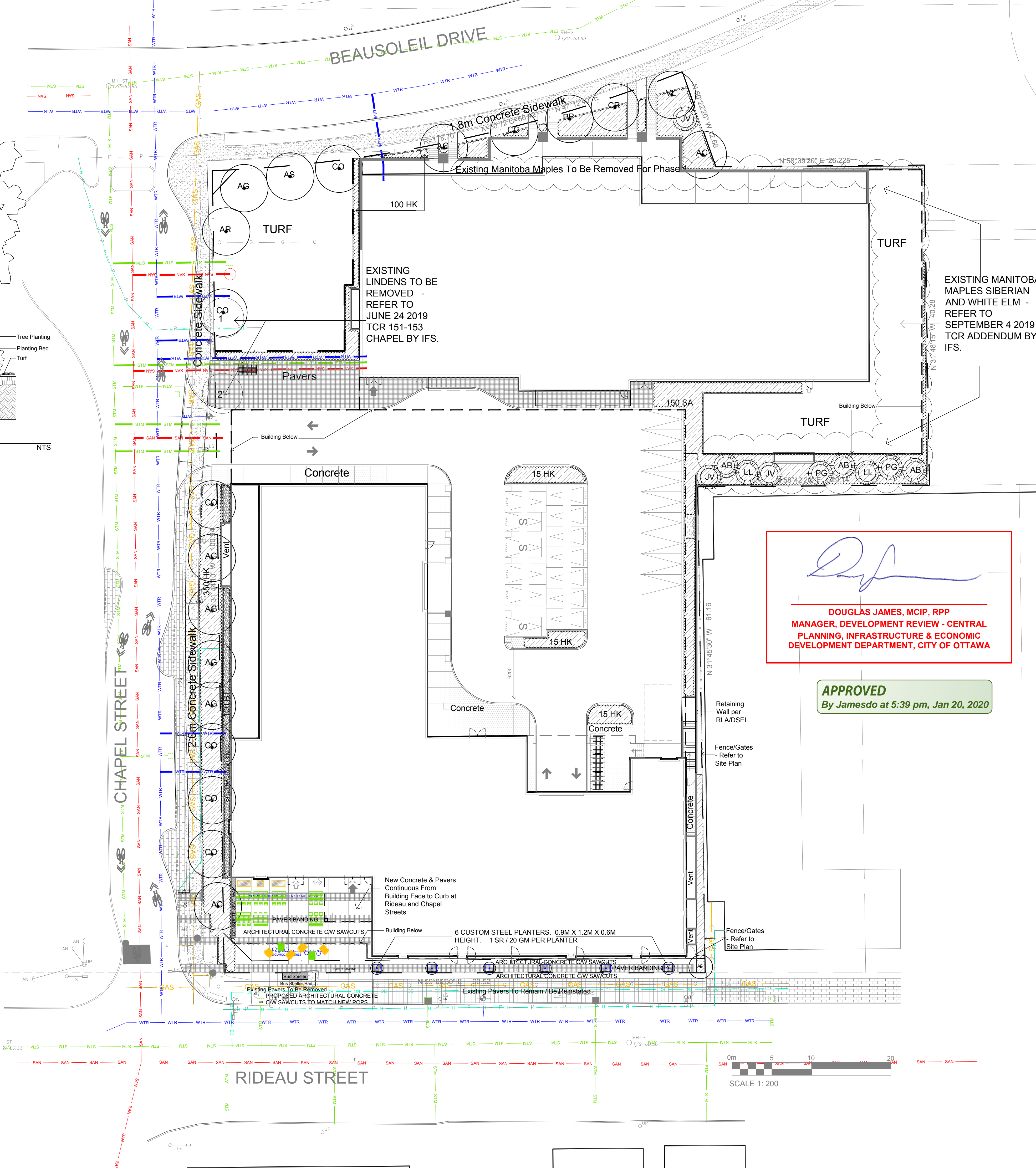
PAVER TYPE PATTERN COLOUR TBD Techniseal Next Gel Polymeric Jointing Sand

GENERAL CONCRETE NOTES:  
ALL CONCRETE FINISHES TO BE APPROVED BY GJA LANDSCAPE ARCHITECT.  
SAWCUT LAYOUT FOR ALL AREAS TO BE MARKED ON SITE IN RED CHALK, REVIEWED, ADJUSTED AND APPROVED BY GJA LANDSCAPE ARCHITECT-PRIOR TO ANY CUTTING.  
EXPANSION JOINT LAYOUT FOR ALL AREAS TO BE LAID OUT ON SITE, REVIEWED, ADJUSTED AND APPROVED BY GJA LANDSCAPE ARCHITECT-PRIOR TO ANY CONCRETE POURING.  
FINISH: TOOL EDGE FIRST, THEN WIPE OFF TOOL MARKS WHILE APPLYING FINISH  
Concrete 125mm Thick, 32mpa, 6% Air Entrainment 6x6 Wire Mesh, Fibre Exp. Joints at all Hard Edges and 6m O.C. in Both Directions, Sawcut Control Joints (1" depth) 2.0m O.C. minimum



CONCRETE PAVING

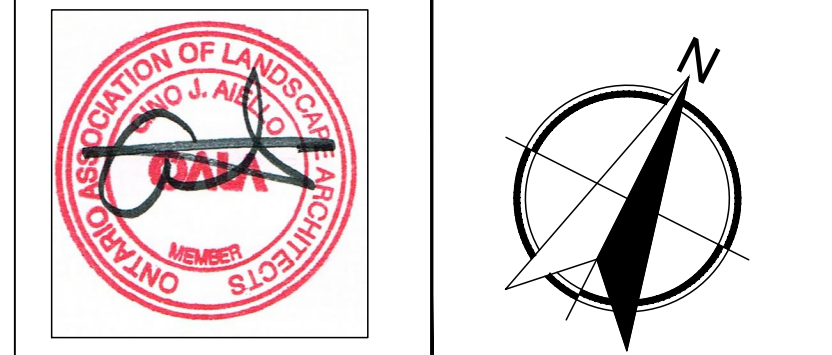
32 MPA C2 c/w FLOAT FINISH - TOOL EDGE FIRST, THEN WIPE OFF TOOL MARKS WHILE APPLYING FINISH



Drawing Remains the Property of/Copyright Reserved by Gino J. Aiello Landscape Architect. Do Not Use or Reproduce Without Approval of Gino J. Aiello.  
**NOT** To Be Used For Construction **Unless** indicated by Revision: **"FOR LANDSCAPE CONSTRUCTION"**.  
**Contractor is Responsible** for Verification of Site Locations of all Utilities. Report any Discrepancies Between Site and Drawing Immediately to Gino J. Aiello. Do NOT Proceed Until Clarified.  
TURF AREAS TO BE SOD C/W 150MM DEPTH TOPSOIL ON APPROVED SUBGRADE| SOD TO BE #1 GRADE TURFGRASS NURSERY SOD per NSGA - Fine Fescue/Kentucky Bluegrass Sod | PLANTING MIX TO BE APPROVED BY LANDSCAPE ARCHITECT | PLANT MATERIAL TO MEET CNLA STANDARDS/BE APPROVED BY LANDSCAPE ARCHITECT PRIOR TO PLANTING | ALL MATERIALS & WORK TO BE MAINTAINED UNTIL FINAL ACCEPTANCE, (MOWING TURF, WEEDING BEDS, WATERING TURF & PLANTS) & INCLUDE 1 YEAR WARRANTY FROM DATE OF FINAL ACCEPTANCE | PROVIDE WATERING OF ALL PLANT MATERIAL AS REQUIRED FOR PROPER ESTABLISHMENT, UNTIL END OF WARRANTY PERIOD | REFER TO CIVIL ENGINEER'S DRAWING FOR ELEVATIONS / GRADING|  
The Landscape Plan is to be read in conjunction with the grading, servicing, site and survey plan | Bare root material to be planted in season only | All plant material locations to be staked on site by the landscape contractor and checked by the landscape architect prior to planting | All trees to be preserved on or directly adjacent to the site will be protected | Plant material are to be installed a minimum of: 3.0m away from any part of any hydro transformer, 3.0m corridor between a fire hydrant and the curb, a 2.5m radius beside or behind a fire hydrant, 2.0m from any servicing/utility line or structure |

- 19 Existing Tree to be Removed
- PG Proposed Coniferous Tree
- CR Proposed Deciduous Tree
- Proposed Planting Bed
- Proposed Riverwash Stone On Filter Cloth
- Proposed Pavers
- Maglin - MBR350-5s
- Custom Steel Planter
- Custom Steel Planter
- MLTB/MLB 1050 Series
- Muskoka Chairs
- MCL/MCC 720 Series

No.	Revision	Date
6	FOR SPC SUBMISSION 4	DECEMBER 2 2019
5	FOR SPC SUBMISSION 3	OCTOBER15 2019
4	FOR SPC SUBMISSION 2	JULY 15 2019
3	FOR SPC SUBMISSION 1	APRIL 10 2019
2	FOR COORDINATION	APRIL 4 2019
1	PRELIMINARY SITE PLAN	MARCH 25 2019



Property Owner  
**Trinity Development Group Inc.**  
Bloor Islington Place, East Tower 77 Bloor Street West, Suite 1601  
Toronto, ON Canada M5S 1M2

Gino J. Aiello landscape architect  
Gino@GJALA.com (613) 852 1343  
110 Didsbury Road Unit # 9 | Ottawa Ontario | K2T 0C2

Project  
**RIDEAU AND CHAPEL**  
151-153 Rideau Street Ottawa

Drawing  
**ULTIMATE Landscape Plan**

Date: JANUARY 2019  
Scale: 1:250  
City of Ottawa  
Dwg #17919

Sheet Number  
**L1**

D07-12-19-0064