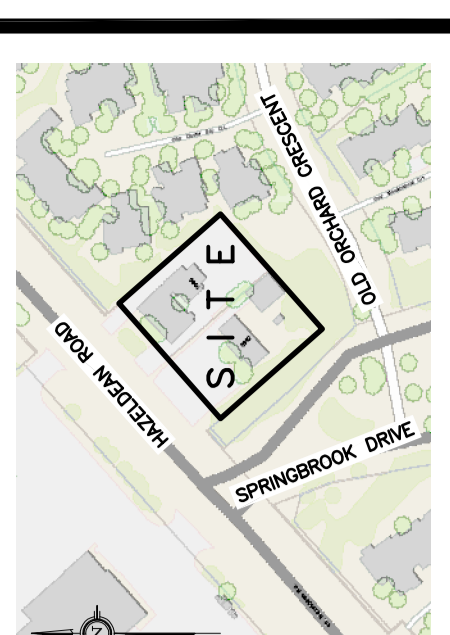


CB	CATCH BASIN
MH	MANHOLE
CB/MH	CATCH BASIN/MANHOLE
SPL	SPRINGLINE OF PIPE
INV	INVERT OF PIPE
SKN	SUBIRIGMS IN CB
ST	SANITARY SEWER
SW	STORM SEWER
WS/WM	WATER SERVICE/WATERMAIN
CS	CURB STOP & STANDPOST
V	VALVE & VALVE BOX
FH	FIRE HYDRANT
WM	WATER METER
W	REMOTE WATER METER READOUT
E	EXISTING GRADE ELEVATION
+66.75	PROPOSED GRADE ELEVATION
0.5%	EXISTING SLOPE OF GRADE
0.5%	PROPOSED SLOPE OF GRADE
→	EMERGENCY OVERLAND FLOW
-	TOP OF SLOPE
---	B.O.S.
---	CENTRELINE OF SHALE
---	PROPERTY LINE
---	SILT FENCE BARRIER
---	150mm CURB/DEPRESSED CURB
---	LIGHT-DUTY PAVEMENT
---	HEAVY-DUTY PAVEMENT
---	CRITICAL ROOT ZONE
FFL	FIRST FLOOR LEVEL
TOF	TOP OF FOUNDATION
USF	UNDERSIDE OF FOOTING



No.	DATE	REVISION
4	JAN 13-20	RE-ISSUED FOR APPROVAL
3	NOV 22-19	RE-ISSUED FOR APPROVAL
2	SEP 5-19	ISSUED FOR APPROVAL
1	AUG 30-19	ISSUED FOR COORDINATION

D. B. GRAY ENGINEERING INC.
Surveying Management - Civil Engineering - Storm & Sanitary Sewers - Erosion
700 Long Point Circle
Ottawa, Ontario
dgray@dbgrayengineering.com
613-425-8044

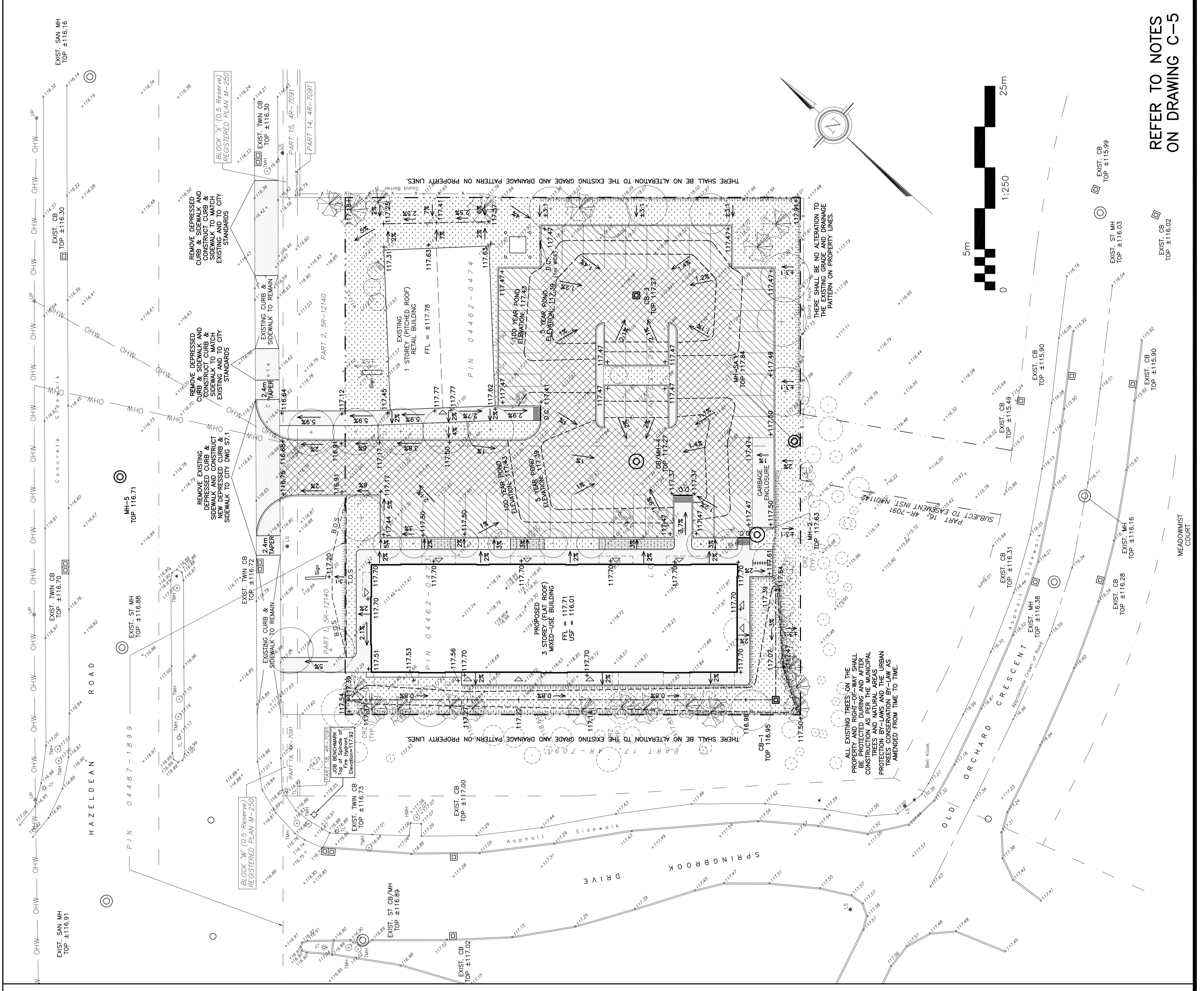
**PROPOSED
MIXED-USE BUILDING**
5986-5992 HAZELDEAN RD
OTTAWA, ONTARIO

GRADING PLAN

Drawn	D.B.G.
Hor. Scale	1:250
Vert. Scale	
Date	AUG 30-19
Job No.	19042
Drawn By	JUN 13-20
Checked By	
Engineer's Seal	

LICENCE OF PROFESSIONAL ENGINEER
D.B. GRAY
17016502
REGISTERED ENGINEER

NOT VALID UNLESS SIGNED & DATED
C-3 of 6
#18024



**REFER TO NOTES
ON DRAWING C-5**