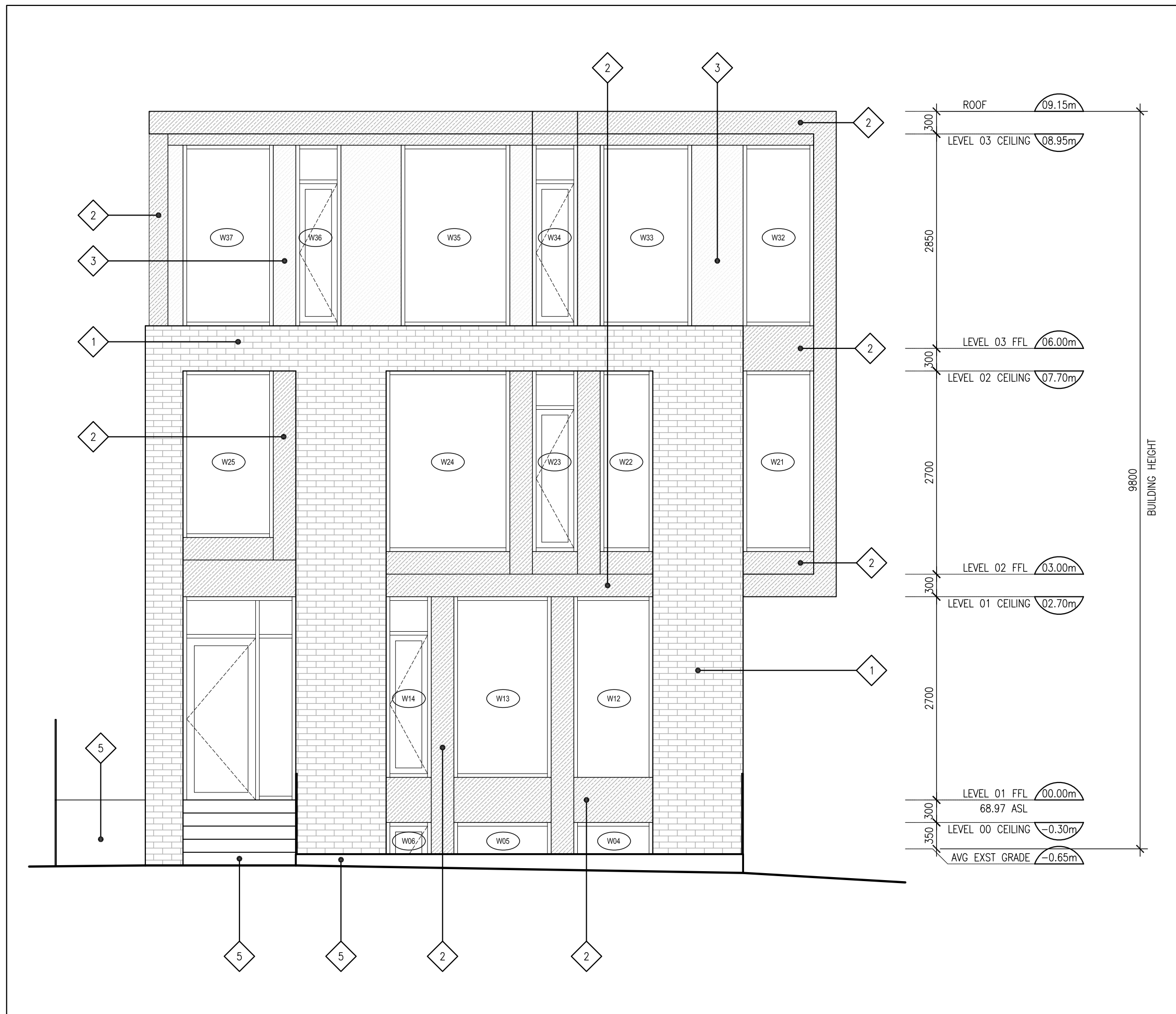

DOUGLAS JAMES, MCIP, RPP
MANAGER, DEVELOPMENT REVIEW - CENTRAL
PLANNING, INFRASTRUCTURE & ECONOMIC
DEVELOPMENT DEPARTMENT, CITY OF OTTAWA

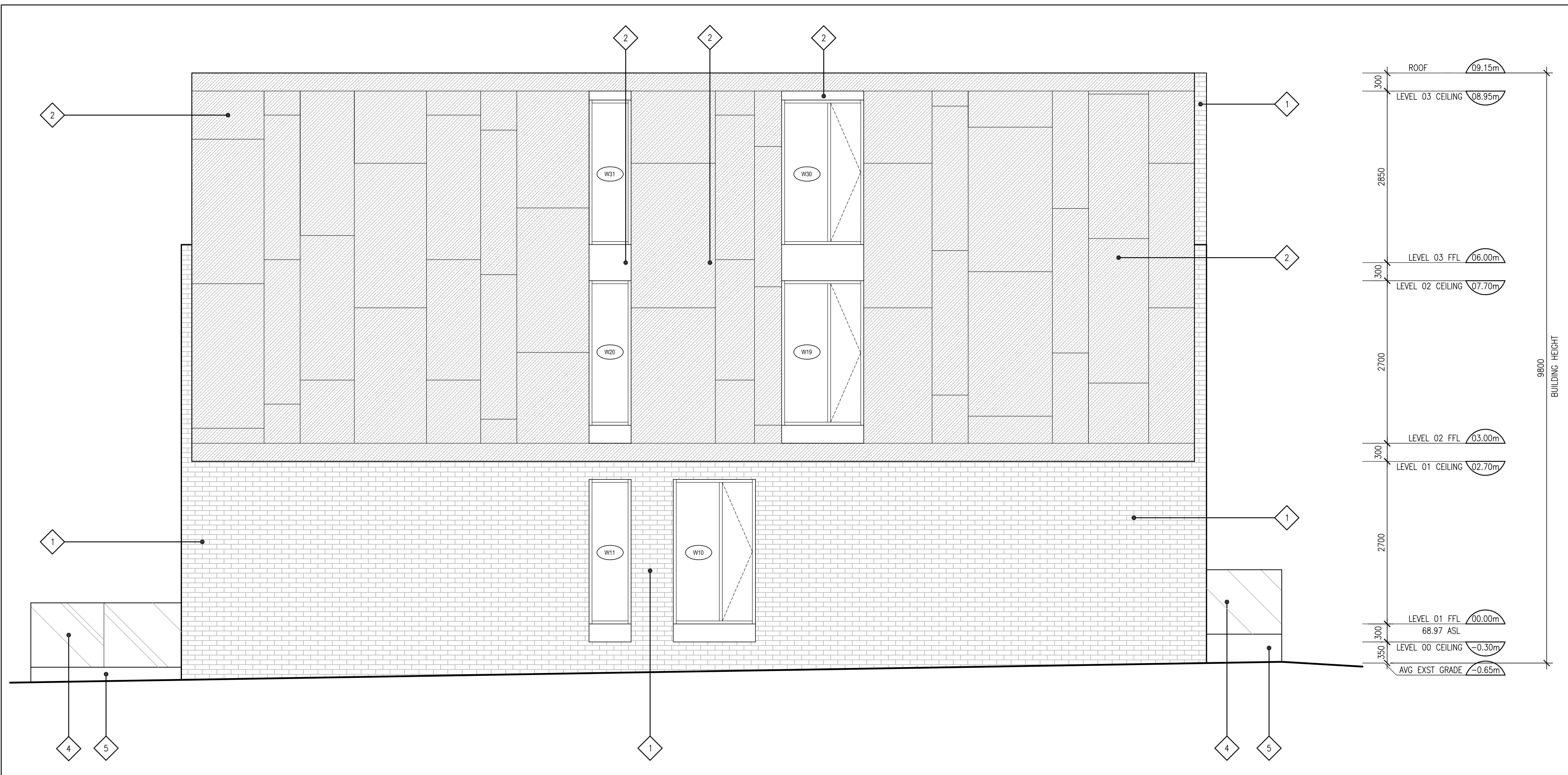
APPROVED
By Jamesdo at 1:18 pm, Jan 07, 2020



2 NORTH ELEVATION
A201 SCALE: 1:50

CLADDING LEGEND	
1	BRICK SUPPLIER: ARRISCRAFT PRODUCT: CONTEMPORARY BRICK COLOUR: RED
2	FIBRE CEMENT PANEL SUPPLIER: CEMFORT COLOUR: DARK GREY
3	FIBRE CEMENT PANEL SUPPLIER: CEMFORT COLOUR: LIGHT GREY
4	CLEAR GLASS GUARD
5	POURED CONCRETE

EXPOSING BUILDING FACE CALCULATION	
WEST ELEVATION:	
EXPOSING BUILDING FACE AREA :	163.77m ²
UNPROTECTED OPENINGS PERMITTED: 7% (OBC TABLE 9.10.15.4)	
PROPOSED UNPROTECTED OPENINGS:	11.43m ² (6.98%)
EAST ELEVATION:	
EXPOSING BUILDING FACE AREA :	158.92m ²
UNPROTECTED OPENINGS PERMITTED: 7% (OBC TABLE 9.10.15.4)	
PROPOSED UNPROTECTED OPENINGS:	0m ² (0%)
GLAZING CALCULATION - OBC SB12	
NORTH ELEVATION AREA:	85.0m ²
SOUTH ELEVATION AREA:	82.08m ²
EAST ELEVATION AREA:	158.92m ²
WEST ELEVATION AREA:	163.77m ²
TOTAL ENVELOPE AREA:	489.77m ²
TOTAL GLAZED AREA:	
NORTH ELEVATION:	32.04m ²
SOUTH ELEVATION:	29.45m ²
EAST ELEVATION:	00.00m ²
WEST ELEVATION:	11.43m ²
TOTAL GLAZED AREA:	72.92m ² (20.14%)



1 WEST ELEVATION
A201 SCALE: 1:50

- GENERAL ARCHITECTURAL NOTES:
- This drawing is the property of the Architect and may not be reproduced or used without the expressed consent of the Architect.
 - Drawings are not to be scaled. The Contractor is responsible for checking and verifying all levels and dimensions and shall report all discrepancies to the Architect and obtain clarification prior to commencing work.
 - Upon notice in writing, the Architect will provide written/graphic clarification or supplementary information regarding the intent of the Contract Documents.
 - The Architectural drawings are to be read in conjunction with all other Contract Documents including Project Manuals and the Structural, Mechanical and Electrical Drawings.
 - Positions of exposed or finished Mechanical or Electrical devices, fittings and fixtures are indicated on the Architectural Drawings. Locations shown on the Architectural Drawings shall govern over Mechanical and Electrical Drawings. Mechanical and Electrical items not clearly located will be located as directed by the Architect.
 - These documents are not to be used for construction unless specifically noted for such purpose.

REVISION RECORD

ISSUED FOR COORDINATION	2019-07-19
RE-ISSUED FOR SITE PLAN CONTROL	2018-12-13
ISSUED FOR COORDINATION	2018-11-05
ISSUED FOR SITE PLAN CONTROL	2018-09-20
ISSUED FOR COORDINATION	2018-07-13

ISSUE RECORD

project1 studio
Project1 Studio Incorporated
[613.594.3539] | info@project1studio.ca

24 HAWTHORNE

24 Hawthorne Avenue
Ottawa, ON

PROJ	SCALE	DRAWN	REVIEWED
1711	NOTED	MB	RMK

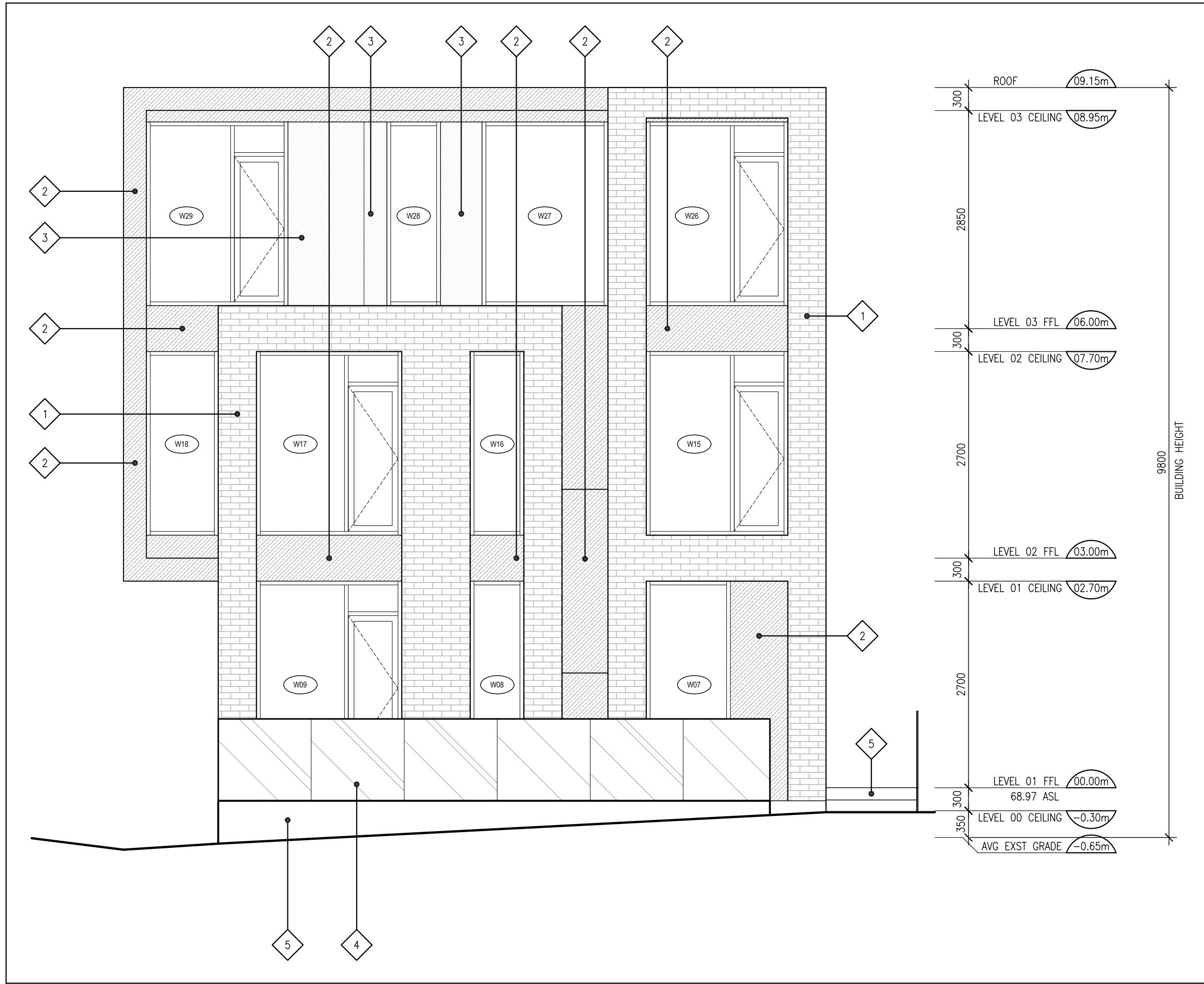
WEST & NORTH ELEVATION

A201

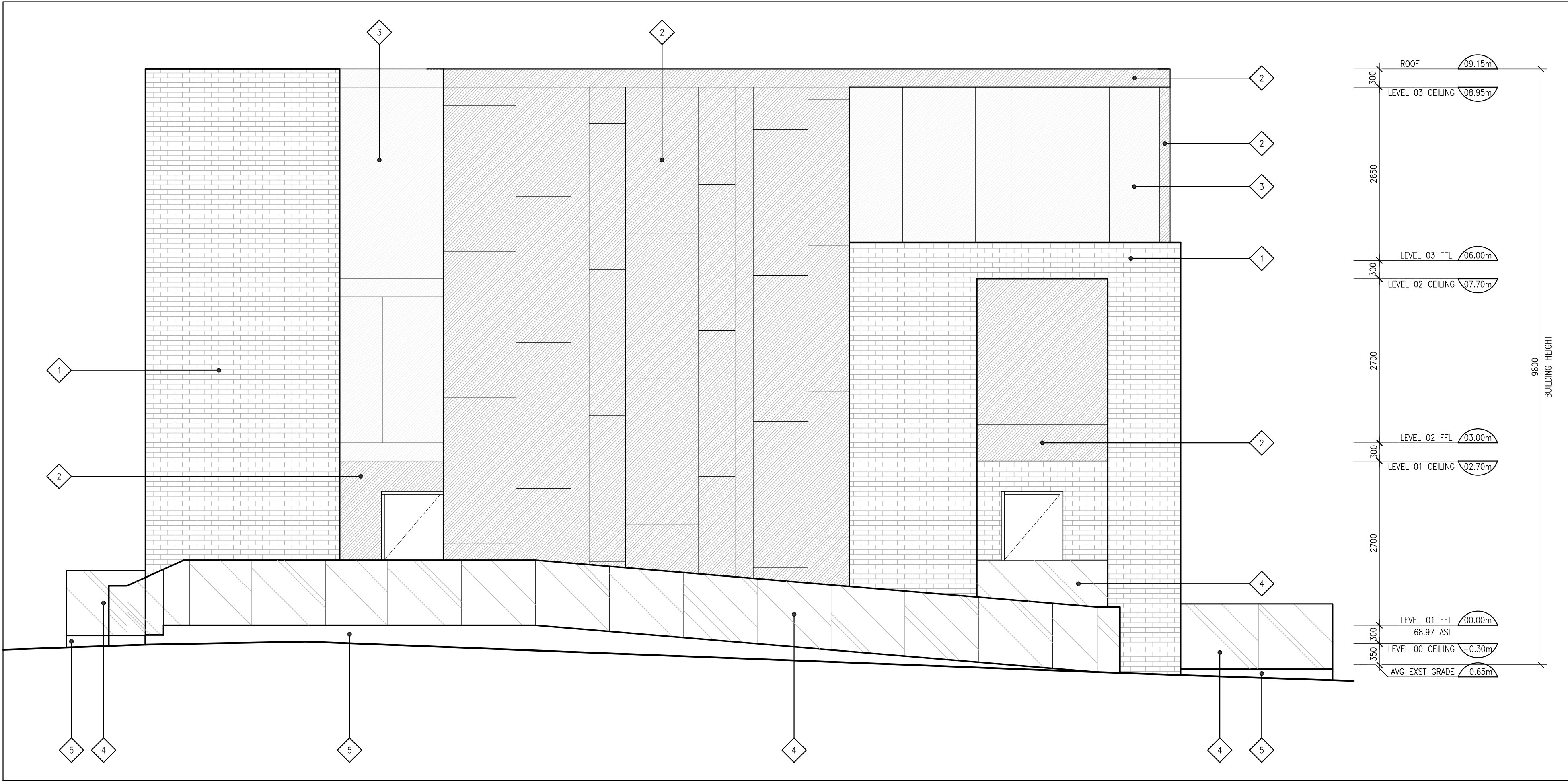
DJ

DOUGLAS JAMES, MCIP, RPP
MANAGER, DEVELOPMENT REVIEW - CENTRAL
PLANNING, INFRASTRUCTURE & ECONOMIC
DEVELOPMENT DEPARTMENT, CITY OF OTTAWA

APPROVED
By Jamesdo at 1:19 pm, Jan 07, 2020



CLADDING LEGEND	
1	BRICK: SUPPLIER: ARRISCRRAFT PRODUCT: CONTEMPORARY BRICK COLOUR: RED
2	FIBRE CEMENT PANEL SUPPLIER: CEMFORT COLOUR: DARK GREY
3	FIBRE CEMENT PANEL SUPPLIER: CEMFORT COLOUR: LIGHT GREY
4	CLEAR GLASS GUARD
5	POURED CONCRETE



- GENERAL ARCHITECTURAL NOTES:
- This drawing is the property of the Architect and may not be reproduced or used without the expressed consent of the Architect.
 - Drawings are not to be scaled. The Contractor is responsible for checking and verifying all levels and dimensions and shall report all discrepancies to the Architect and obtain clarification prior to commencing work.
 - Upon notice in writing, the Architect will provide written/graphic clarification or supplementary information regarding the intent of the Contract Documents.
 - The Architectural drawings are to be read in conjunction with all other Contract Documents including Project Manuals and the Structural, Mechanical and Electrical Drawings.
 - Positions of exposed or finished Mechanical or Electrical devices, fittings and fixtures are indicated on the Architectural Drawings. Locations shown on the Architectural Drawings shall govern over Mechanical and Electrical Drawings. Mechanical and Electrical items not clearly located will be located as directed by the Architect.
 - These documents are not to be used for construction unless specifically noted for such purpose.

REVISION RECORD

ISSUED FOR COORDINATION	2019-07-19
RE-ISSUED FOR SITE PLAN CONTROL	2018-12-13
ISSUED FOR COORDINATION	2018-11-05
ISSUED FOR SITE PLAN CONTROL	2018-09-20
ISSUED FOR COORDINATION	2018-07-13

ISSUE RECORD

project1
studio

Project1 Studio Incorporated
[613.894.3539] | info@project1studio.ca

24 HAWTHORNE

24 Hawthorne Avenue
Ottawa, ON

PROJ	SCALE	DRAWN	REVIEWED
1711	NOTED	MB	RMK

EAST & SOUTH ELEVATION

A202