

Lighting • Controls • Shades



Control the Experience

2936 Baseline Road, Suite 100, Ottawa, ON K2H 1B3
www.fluxlighting.ca T: 613-592-9948

Project name : St Mary Coptic Orthodox Church Expansion v4

Date: 12/16/2019

Prepared for: Emerson Joe Kumar

AGi32 Version 19.8.6

Filename: St Mary Coptic Orthodox Church Expansion v4.AGI

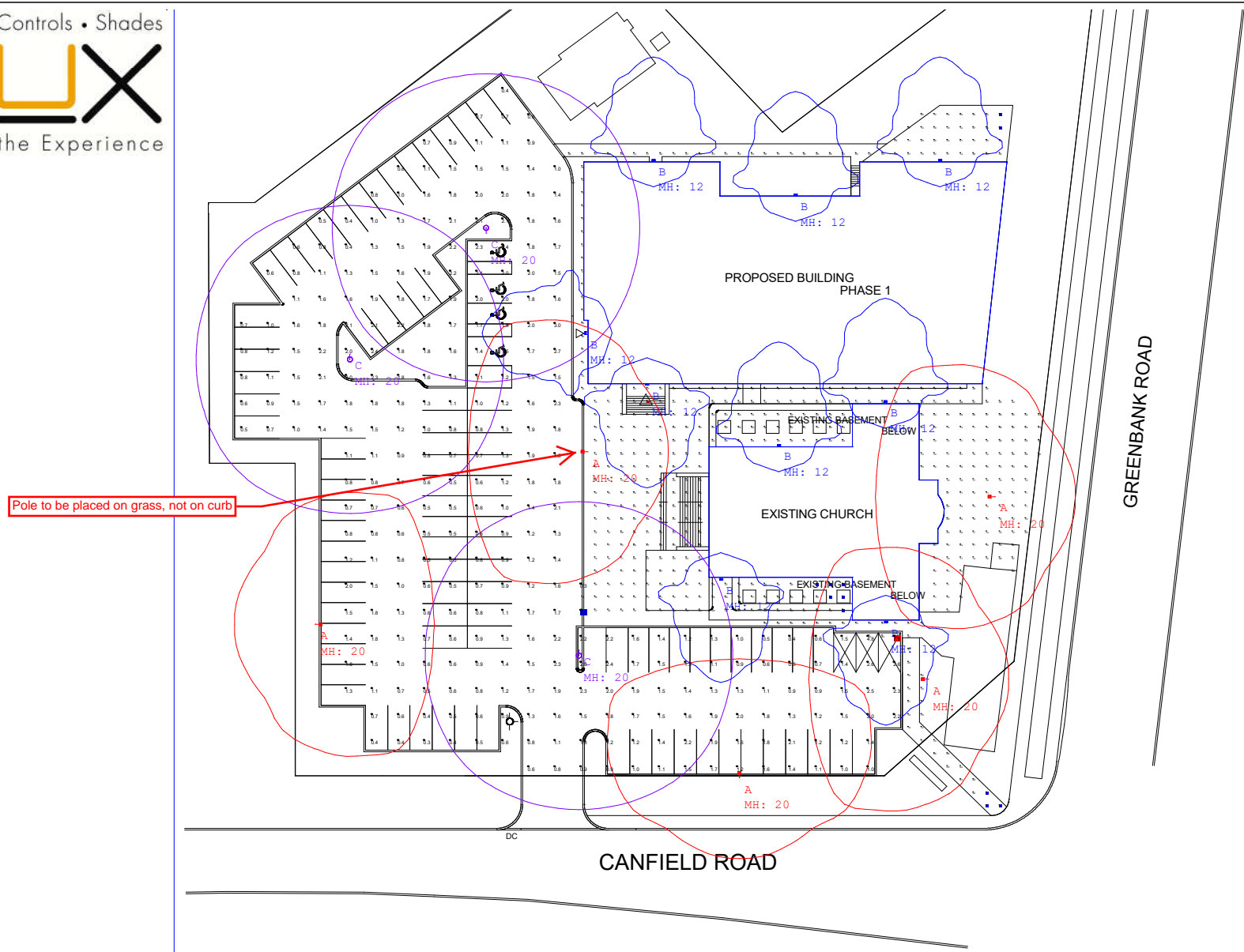
Total Time (Hrs.): 2.5

By : Anne Côté

Units:

Page 1 of 11

DISCLAIMER: Calculations have been performed according to ESNA & CIE standards and good practice. Some differences between measured values and calculated results may occur due to tolerances in calculation methods, testing procedures, component performance, measurement techniques and field conditions such as voltage and temperature variations. Input data used to generate the attached calculations such as room dimensions, reflectances, furniture and architectural elements significantly affect the lighting calculations. If the real environment conditions do not match the input data, differences will occur between measured values and calculated values.



Luminaire Schedule							
Symbol	Qty	Label	Description	Lum. Lumens	Lum. Watts	LLF	Filename
	5	A	ARE-EDG-3M-xx-06-E-UL-xx-350-xxxx-40K	6659	67.62	0.900	ARE-EDG-3M-xx-06-E-UL-xx-350-xxxx-40K_PL09404-001A.ies
	9	B	C-WIP-A-TRAD-3L-40K-06	3278	33.15	0.900	C-Lite-C-WIP-A-TRAD-3L-40K-Watt-Pack-Series-IES-File.ies
	3	C	ARE-EDG-5M-xx-06-E-UL-xx-700-xxxx-40K	13134	135.49	0.900	ARE-EDG-5M-xx-06-E-UL-xx-700-xxxx-40K_PL09285-001.ies

Calculation Summary							
Label	CalcType	Units	Avg	Max	Min	Avg/Min	Max/Min
Parking	Illuminance	Fc	1.34	7.5	0.2	6.70	37.50
Perimeter	Illuminance	Fc	1.31	8.8	0.1	13.10	88.00

2936 Baseline Road, Suite 100, Ottawa, ON K2H 1B3
 www.fluxlighting.ca T: 613-592-9948

DISCLAIMER: Calculations have been performed according to IESNA & CIE standards and goodpractice. Some differences between measured values and calculated results may occur due to tolerances in calculation methods, testing procedures, component performance, measurement techniques and field conditions such as voltage and temperature variations. Input data used to generate the attached calculations such as room dimensions, reflectances, furniture and architectural elements significantly affect the lighting calculations. If the real environment conditions do not match the input data, differences will occur between measured values and calculated values.

Project name : St Mary Coptic Orthodox Church Expansion v4

Prepared for: Emerson Joekumar

Filename: St Mary Coptic Orthodox Church Expansion v4.AGI

By : Anne Côté

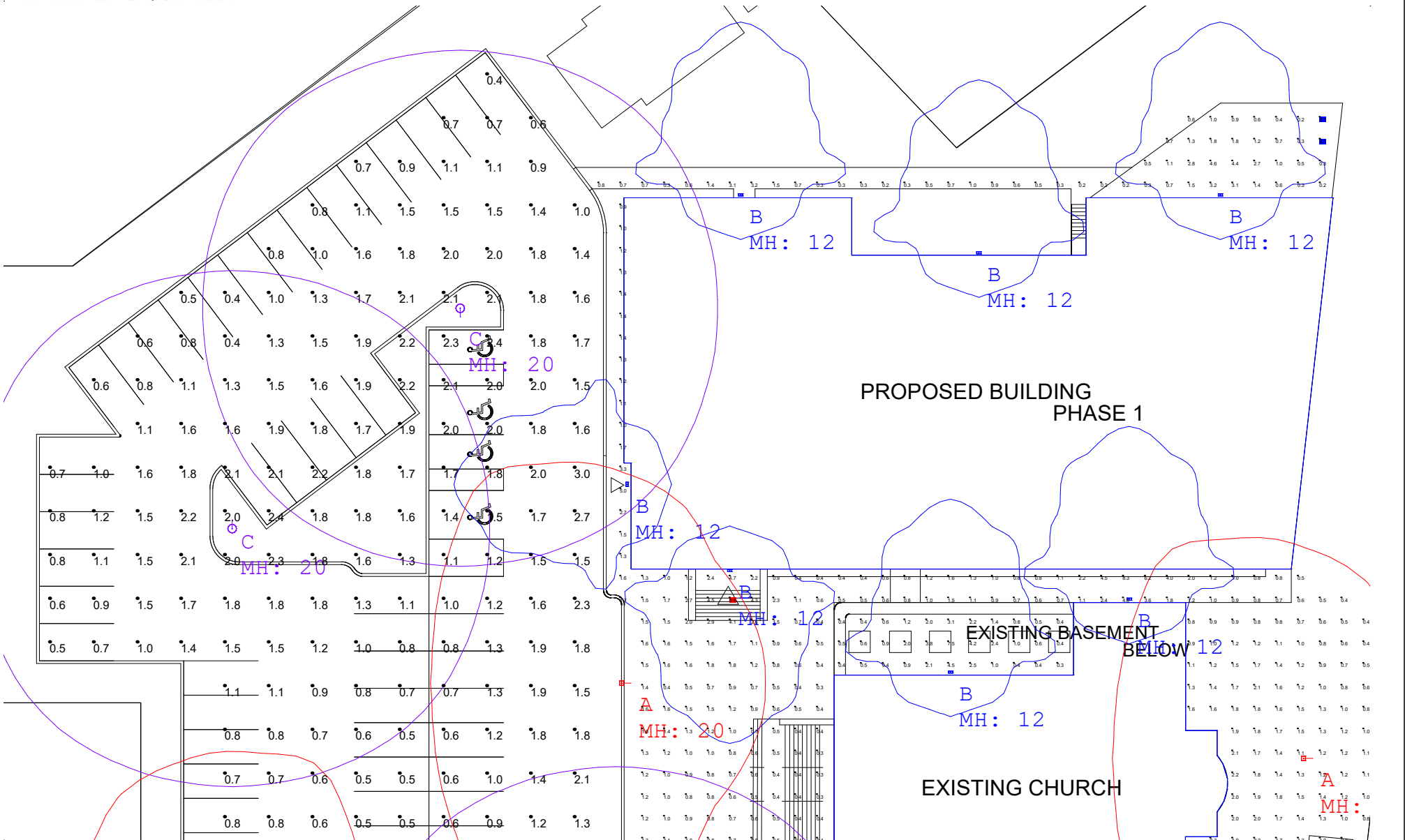
Units:

Date:12/16/2019

AGI32 Version 19.8.6

Total Time (Hrs.): 2.5

Page 2 of 11



2936 Baseline Road, Suite 100, Ottawa, ON K2H 1B3
 www.fluxlighting.ca T: 613-592-9948

DISCLAIMER: Calculations have been performed according to ESNA & CIE standards and good practice. Some differences between measured values and calculated results may occur due to tolerances in calculation methods, testing procedures, component performance, measurement techniques and field conditions such as voltage and temperature variations. Input data used to generate the attached calculations such as room dimensions, reflectances, furniture and architectural elements significantly affect the lighting calculations. If the real environment conditions do not match the input data, differences will occur between measured values and calculated values.

Project name : St Mary Coptic Orthodox Church Expansion v4

Prepared for: Emerson Joekumar

Filename: St Mary Coptic Orthodox Church Expansion v4.AGI

By : Anne Côté

Units:

Date: 12/16/2019

AGI32 Version 19.8.6

Total Time (Hrs.): 2.5

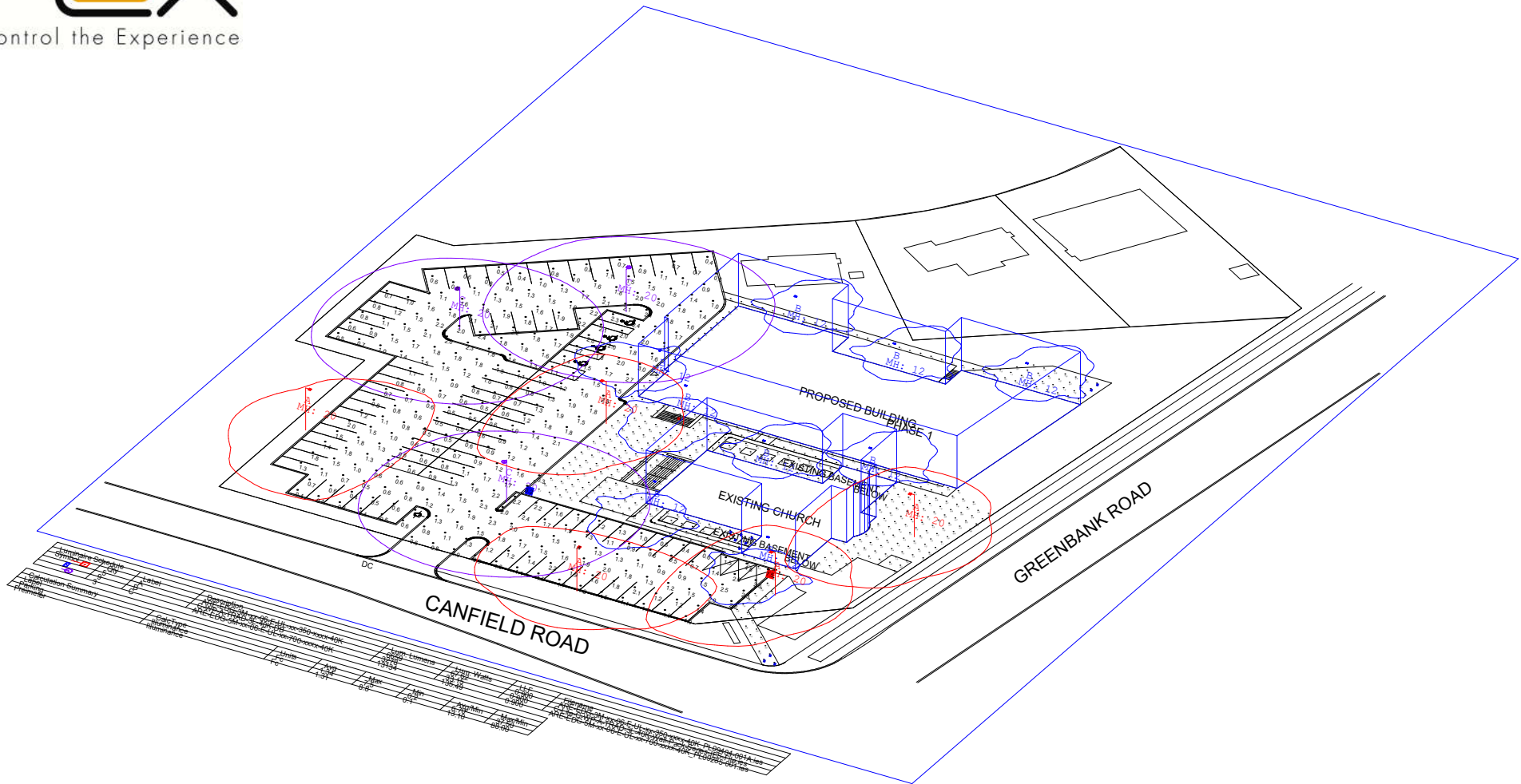
Page 3 of 11

DISCLAIMER: Calculations have been performed according to ESNA & CIE standards and goodpractice. Some differences between measured values and calculated results may occur due to tolerances in calculation methods, testing procedures, component performance, measurement techniques and field conditions such as voltage and temperature variations. Input data used to generate the attached calculations such as room dimensions, reflectances, furniture and architectural elements significantly affect the lightingcalculations. If the real environment conditions do not match the input data, differences will occur between measured values and calculated values.

By : Anne Côté

Units:

Total Time (Hrs.):	2.5
--------------------	-----

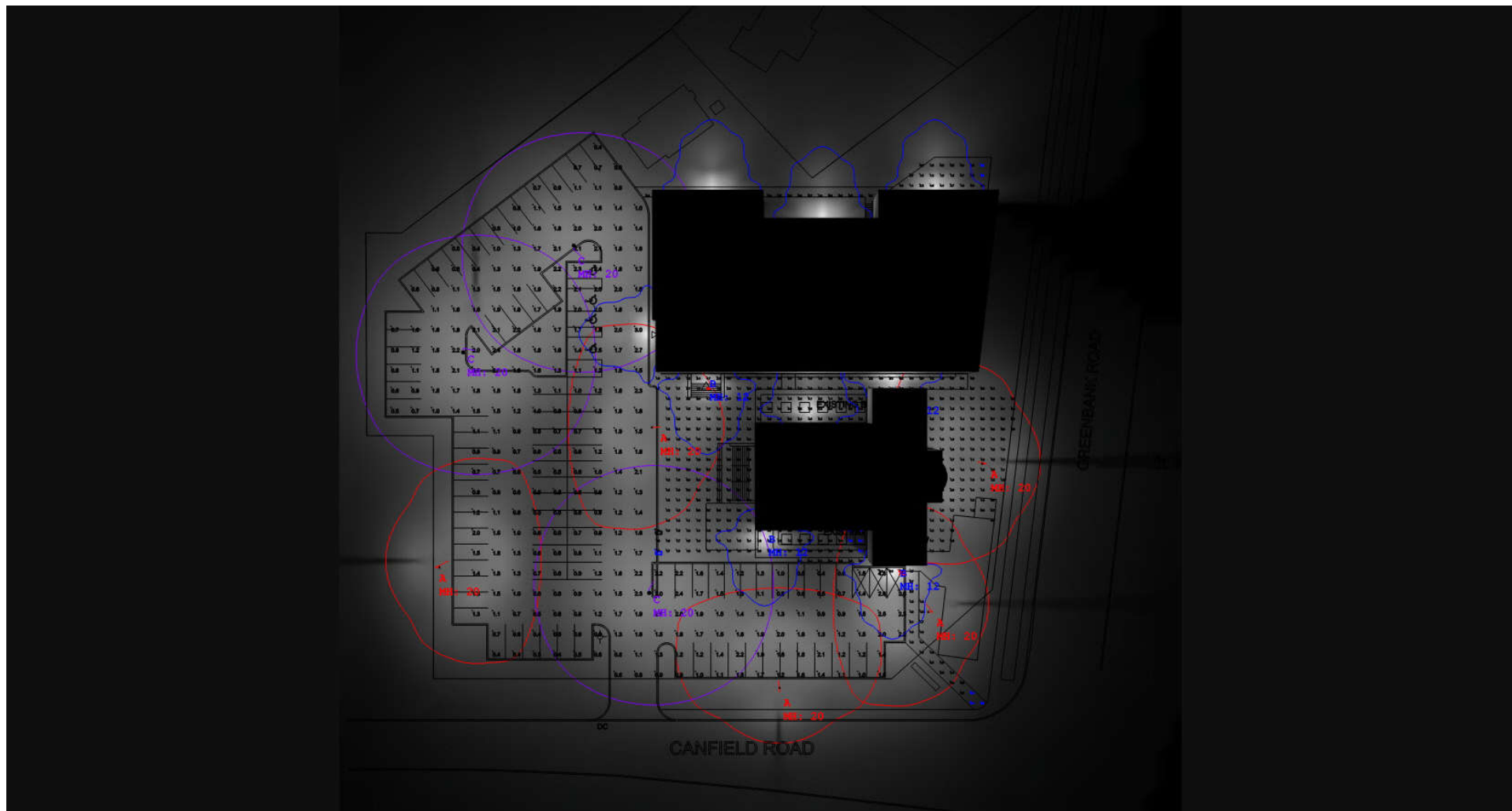




Results summary

Luminaire Schedule								
Symbol	Qty	Label	Description	Lum. Lumens	Lum. Watts	LLF	Filename	Arrangement
	5	A	ARE-EDG-3M-xx-06-E-UL-xx-350-xxxx-40K	6659	67.62	0.900	ARE-EDG-3M-xx-06-E-UL-xx-350-xxxx-40K_PL09404-001A.ies	SINGLE
	9	B	C-WP-A-TRAD-3L-40K-DB	3278	33.15	0.900	C-Lite-C-WP-A-TRAD-3L-40K-Wall-Pack-Series-IES-File.ies	SINGLE
	3	C	ARE-EDG-5M-xx-06-E-UL-xx-700-xxxx-40K	13134	135.49	0.900	ARE-EDG-5M-xx-06-E-UL-xx-700-xxxx-40K_PL09285-001.ies	SINGLE

Calculation Summary							
Label	CalcType	Units	Avg	Max	Min	Avg/Min	Max/Min
Parking	Illuminance	Fc	1.34	7.5	0.2	6.70	37.50
Perimeter	Illuminance	Fc	1.31	8.8	0.1	13.10	88.00



2936 Baseline Road, Suite 100, Ottawa, ON K2H 1B3
www.fluxlighting.ca T: 613-592-9948

DISCLAIMER: Calculations have been performed according to IESNA & CIE standards and goodpractice. Some differences between measured values and calculated results may occur due to tolerances in calculation methods, testing procedures, component performance, measurement techniques and field conditions such as voltage and temperature variations. Input data used to generate the attached calculations such as room dimensions, reflectances, furniture and architectural elements significantly affect the lighting calculations. If the real environment conditions do not match the input data, differences will occur between measured values and calculated values.

Project name : St Mary Coptic Orthodox Church Expansion v4

Prepared for: Emerson Joekumar

Filename: St Mary Coptic Orthodox Church Expansion v4.AGI

By : Anne Côté

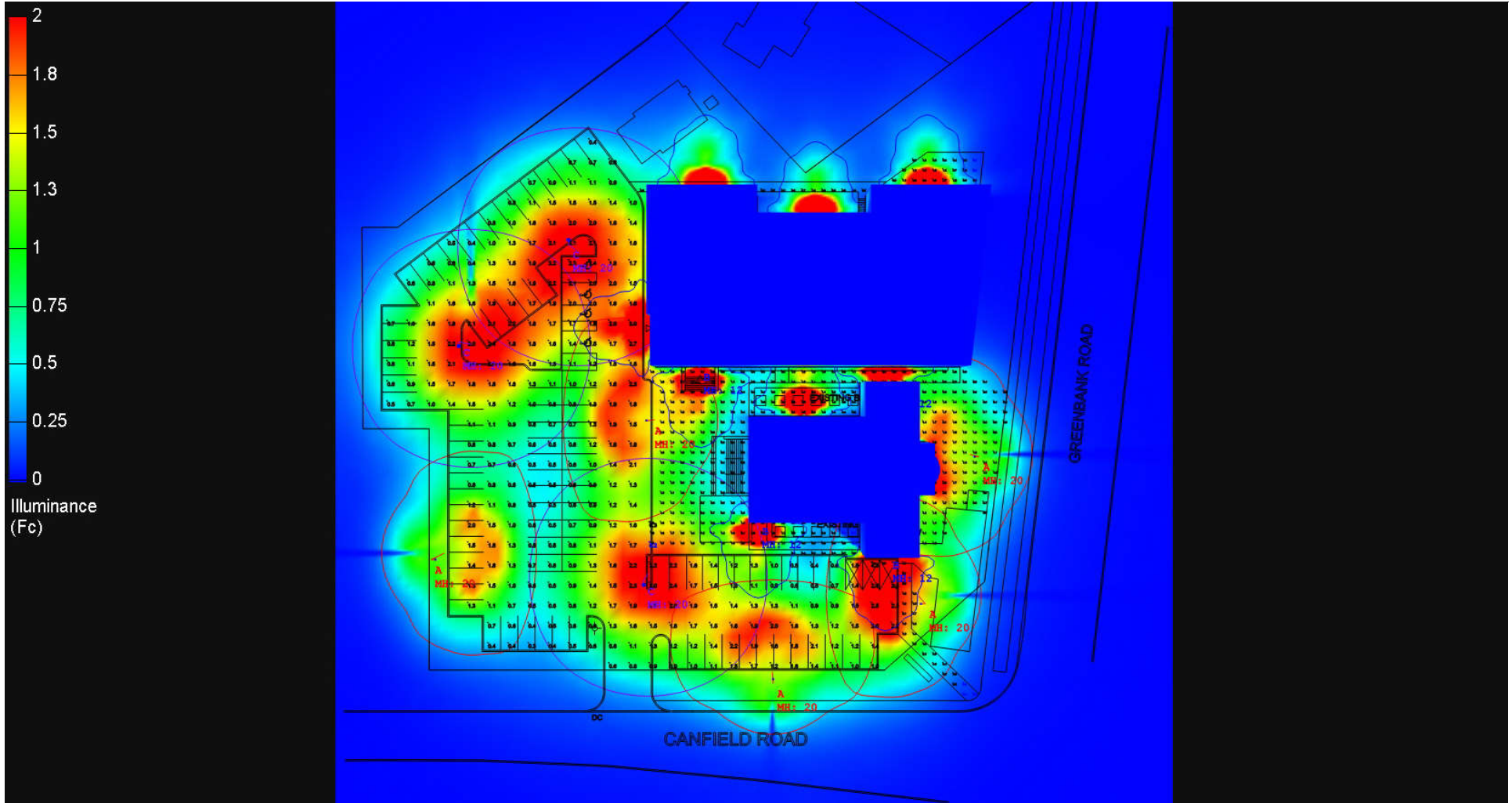
Units:

Date: 12/16/2019

AGI32 Version 19.8.6

Total Time (Hrs.): 2.5

Page 7 of 11



2936 Baseline Road, Suite 100, Ottawa, ON K2H 1B3
www.fluxlighting.ca T: 613-592-9948

DISCLAIMER: Calculations have been performed according to IESNA & CIE standards and goodpractice. Some differences between measured values and calculated results may occur due to tolerances in calculation methods, testing procedures, component performance, measurement techniques and field conditions such as voltage and temperature variations. Input data used to generate the attached calculations such as room dimensions, reflectances, furniture and architectural elements significantly affect the lighting calculations. If the real environment conditions do not match the input data, differences will occur between measured values and calculated values.

Project name : St Mary Coptic Orthodox Church Expansion v4

Prepared for: Emerson Joekumar

Filename: St Mary Coptic Orthodox Church Expansion v4.AGI

By : Anne Côté

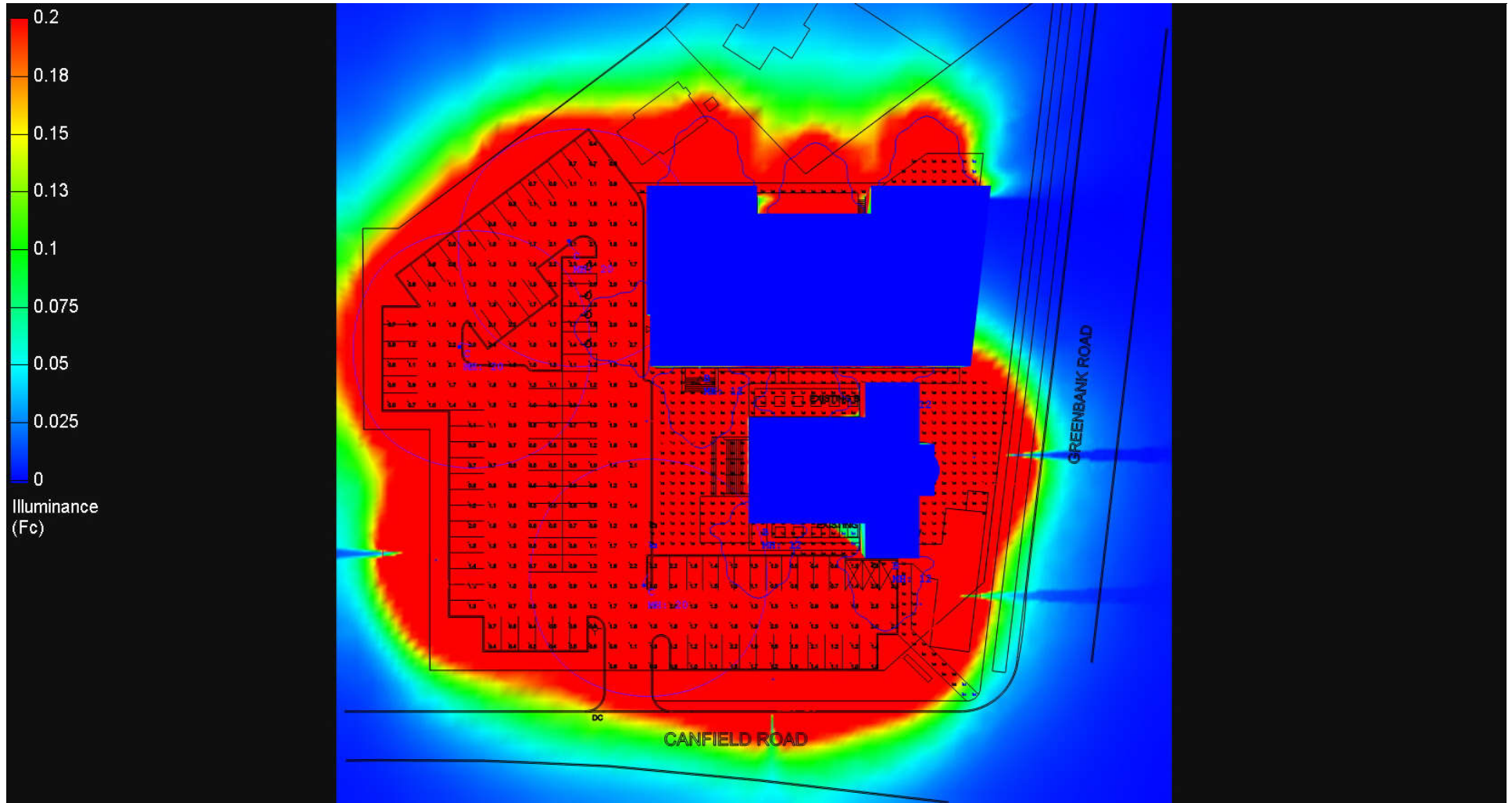
Units:

Date: 12/16/2019

AGI32 Version 19.8.6

Total Time (Hrs.): 2.5

Page 8 of 11



2936 Baseline Road, Suite 100, Ottawa, ON K2H 1B3
www.fluxlighting.ca T: 613-592-9948

DISCLAIMER: Calculations have been performed according to IESNA & CIE standards and goodpractice. Some differences between measured values and calculated results may occur due to tolerances in calculation methods, testing procedures, component performance, measurement techniques and field conditions such as voltage and temperature variations. Input data used to generate the attached calculations such as room dimensions, reflectances, furniture and architectural elements significantly affect the lighting calculations. If the real environment conditions do not match the input data, differences will occur between measured values and calculated values.

Project name : St Mary Coptic Orthodox Church Expansion v4

Prepared for: Emerson Joekumar

Filename: St Mary Coptic Orthodox Church Expansion v4.AGI

By : Anne Côté

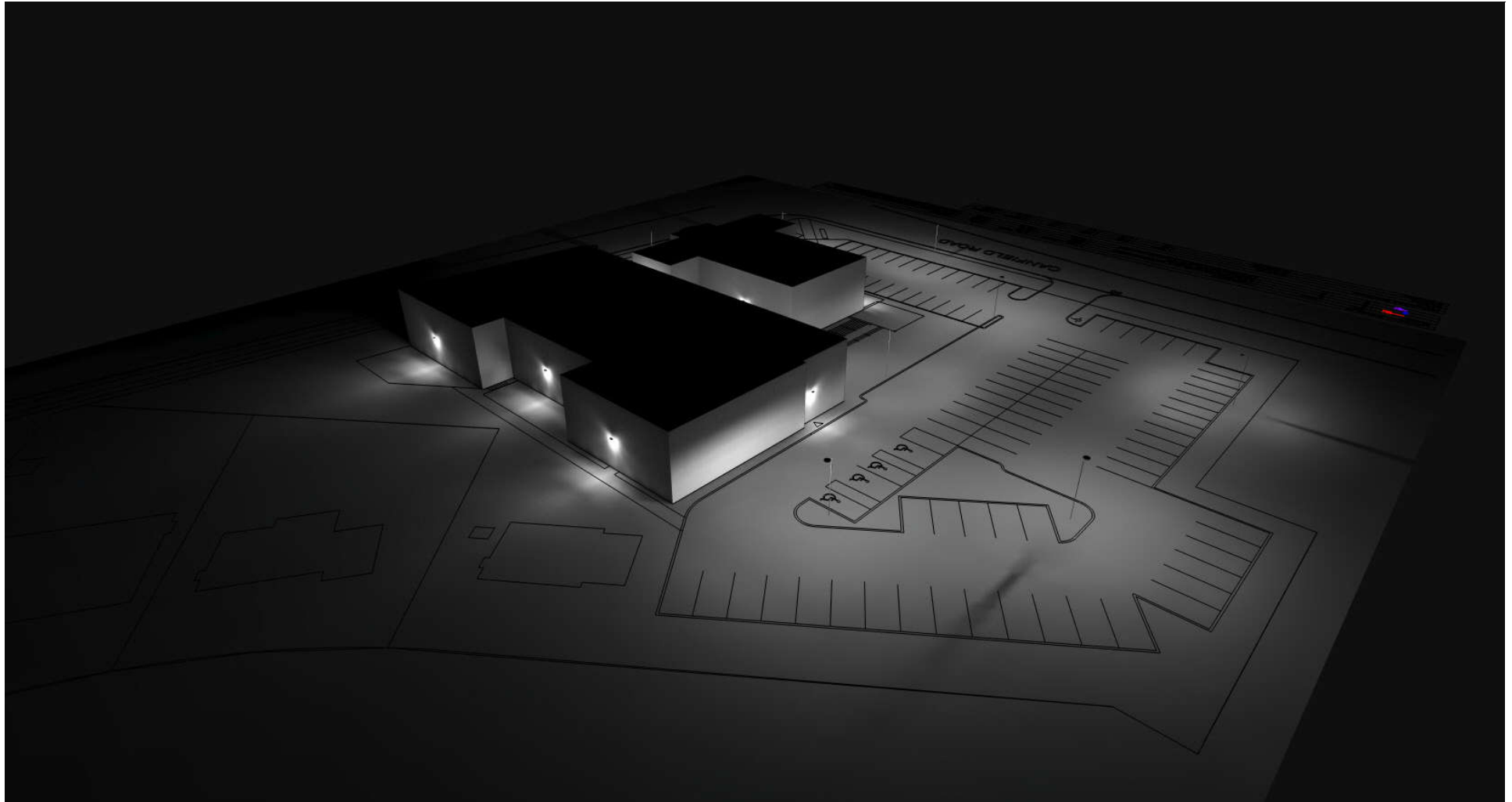
Units:

Date: 12/16/2019

AGI32 Version 19.8.6

Total Time (Hrs.): 2.5

Page 9 of 11



2936 Baseline Road, Suite 100, Ottawa, ON K2H 1B3
www.fluxlighting.ca T: 613-592-9948

DISCLAIMER: Calculations have been performed according to IESNA & CIE standards and good practice. Some differences between measured values and calculated results may occur due to tolerances in calculation methods, testing procedures, component performance, measurement techniques and field conditions such as voltage and temperature variations. Input data used to generate the attached calculations such as room dimensions, reflectances, furniture and architectural elements significantly affect the lighting calculations. If the real environment conditions do not match the input data, differences will occur between measured values and calculated values.

Project name : St Mary Coptic Orthodox Church Expansion v4

Prepared for: Emerson Joekumar

Filename: St Mary Coptic Orthodox Church Expansion v4.AGI

By : Anne Côté

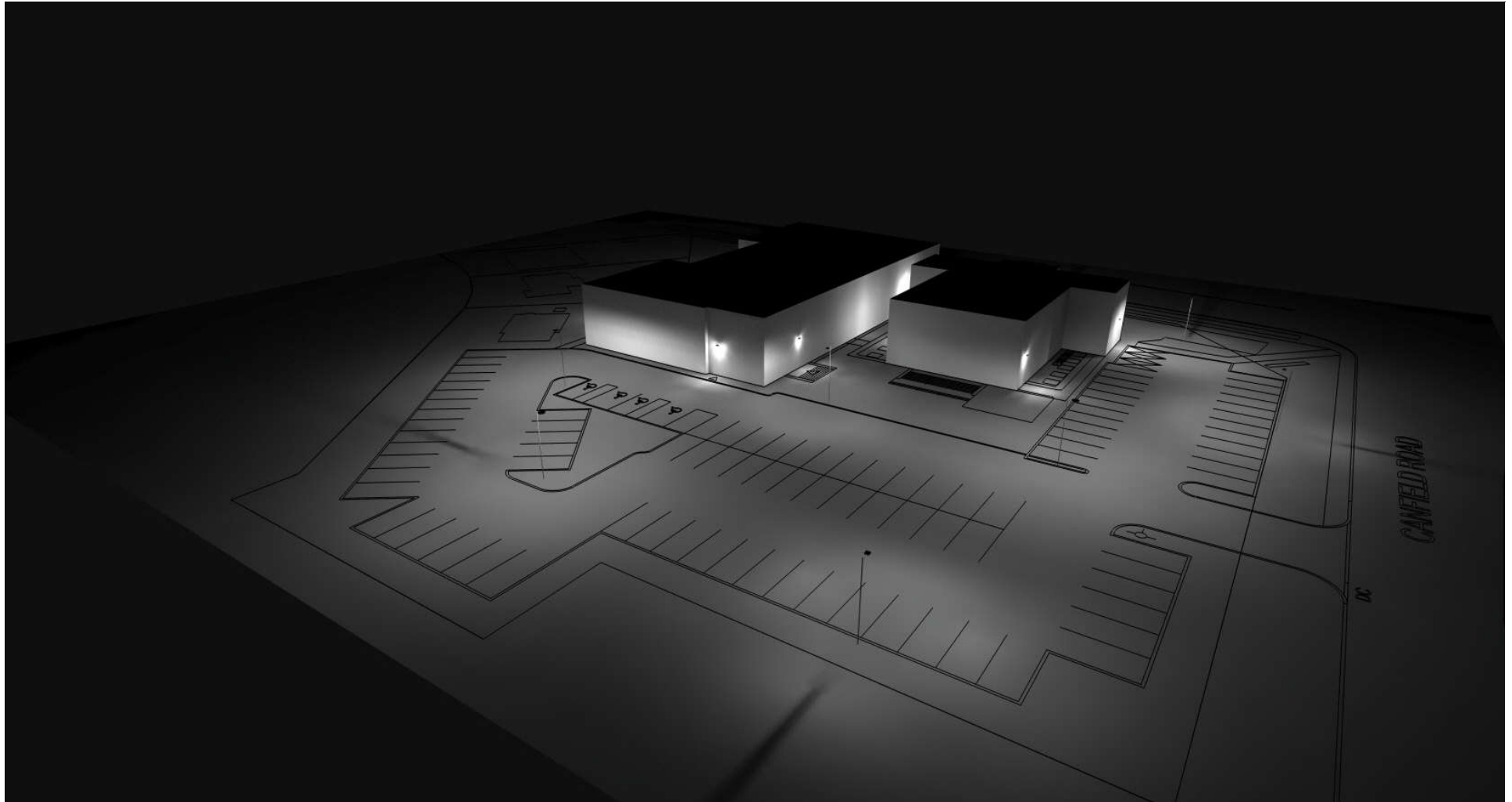
Units:

Date: 12/16/2019

AGI32 Version 19.8.6

Total Time (Hrs.): 2.5

Page 10 of 11



2936 Baseline Road, Suite 100, Ottawa, ON K2H 1B3
www.fluxlighting.ca T: 613-592-9948

DISCLAIMER: Calculations have been performed according to IESNA & CIE standards and good practice. Some differences between measured values and calculated results may occur due to tolerances in calculation methods, testing procedures, component performance, measurement techniques and field conditions such as voltage and temperature variations. Input data used to generate the attached calculations such as room dimensions, reflectances, furniture and architectural elements significantly affect the lighting calculations. If the real environment conditions do not match the input data, differences will occur between measured values and calculated values.

Project name : St Mary Coptic Orthodox Church Expansion v4

Prepared for: Emerson Joekumar

Filename: St Mary Coptic Orthodox Church Expansion v4.AGI

By : Anne Côté

Units:

Date: 12/16/2019

AGI32 Version 19.8.6

Total Time (Hrs.): 2.5

Page 11 of 11