



HOK Architects Corporation  
205 Catherine Street, Suite 101  
Ottawa, Ontario K2P 1C3 Canada  
1-1-813-228-9650 1-1-813-228-9656

All reproduction & intellectual property rights reserved © 2019

In Association with

**WSP STRUCTURAL**  
2611 Queensview Drive, Suite 300  
Ottawa, ON, K2B 8K2

**WSP MECHANICAL**  
2611 Queensview Drive, Suite 300  
Ottawa, ON, K2B 8K2

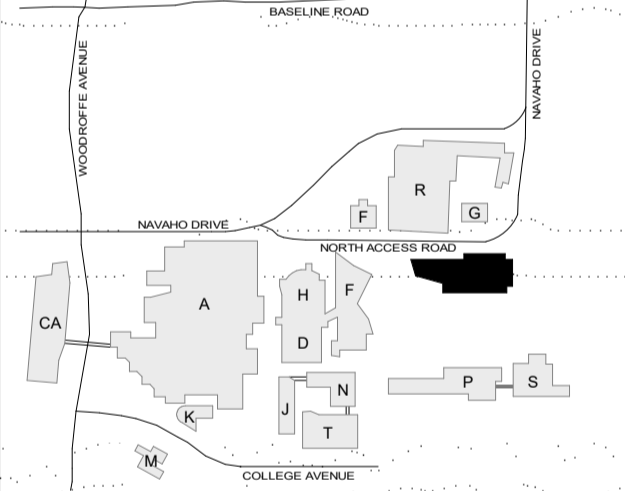
**WSP ELECTRICAL**  
2611 Queensview Drive, Suite 300  
Ottawa, ON, K2B 8K2

**WSP CIVIL**  
2611 Queensview Drive, Suite 300  
Ottawa, ON, K2B 8K2

**CSW Landscape Architects**  
319 McRae Avenue, Suite 502  
Ottawa, ON, K1Z 0B9

**WSP SUSTAINABILITY**  
2611 Queensview Drive, Suite 300  
Ottawa, ON, K2B 8K2

Key Plan



Professio



No.	Description	Date
1	SITE PLAN APPROVAL	2019-06-24
2	RESPONSE TO SPA COMMENTS	2019-09-24

Drawn by: RS Reviewed by: AB  
Project No: 19.32300.00

Sheet Title  
**EXTERIOR ELEVATIONS**

Original drawing is A1. Do not scale contents of this drawing.  
Sheet Number

**SPA-A02**

#17981



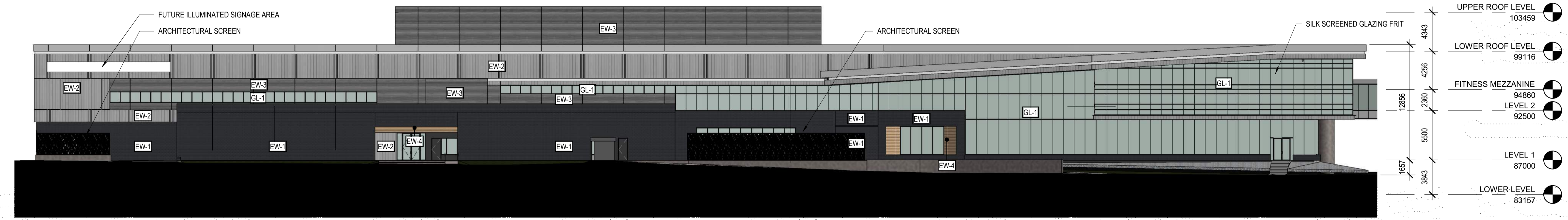
**1 SOUTH ELEVATION**  
1 : 250



**2 EAST ELEVATION**  
1 : 250



**3 WEST ELEVATION**  
1 : 250



**4 NORTH ELEVATION**  
1 : 250

BUILDING ELEVATIONS LEGEND	
GL-1	DOUBLE-GLAZED INSULATED UNITS.
EW-1	DARK IRONSPOT VELOUR MODULAR BRICK.
EW-2	URBAN ACCENT 'BRIGHT SILVER' STEEL PANEL
EW-3	7/8" CORRUGATED STEEL PANEL (CONCEALED FASTENERS)
EW-4	LONGBOARD 'LIGHT OAK' WOOD LOOK ALUMINUM PANEL.

**APPROVED**  
By Mark Young at 3:08 pm, Jan 10, 2020

*Mark Young*  
**MARK YOUNG, MCIP, RPP**  
(A) MANAGER, DEVELOPMENT REVIEW - WEST  
PLANNING, INFRASTRUCTURE & ECONOMIC  
DEVELOPMENT DEPARTMENT, CITY OF OTTAWA

**ALGONQUIN COLLEGE**  
OWNER  
**1385 WOODROFFE AVE, BUILDING "X"**  
OTTAWA, ON K2G 1V8

2019-09-24 3:37:20 PM

D07-12-19-0114