

CONSULTANTS:
 PROPERTY OWNER:
 PINECREST REMEMBRANCE SERVICES LTD.
 2500 BASELINE ROAD
 OTTAWA, ON. K2G 3H4
 (613) 831-1122

ARCHITECT:
 HOBIN ARCHITECTURE INCORPORATED
 63 PAMILLA STREET
 OTTAWA, ON. K1S 3K7
 613-238-1200

SITE SERVICING:
 NOVATECH ENGINEERING CONSULTANTS LTD.
 SUITE 200
 240 MICHAEL COMPLAND DRIVE
 OTTAWA, ON. K2M 1P6
 (613) 254-4643

LANDSCAPE ARCHITECT:
 CATHERINE H. KIRK
 137H CONGRESSION RD
 FORMOSA ON. K0G 1W0
 (519) 623-4324

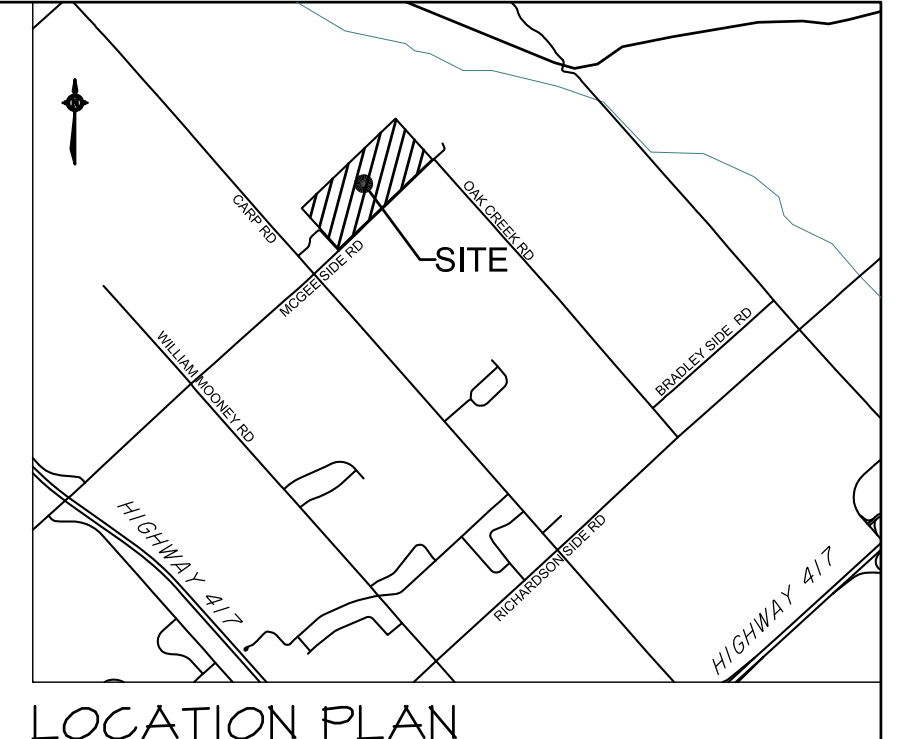
SOILS & ENVIRONMENTAL:
 SEMTEC CONSULTING ENGINEERS & SCIENTISTS
 32 STEACIE DRIVE
 OTTAWA, ONTARIO, K2K 2A1
 (613) 836-1422

SURVEY:
 FARLEY, SMITH & DENIS SURVEYING LTD
 190 COLONNADE ROAD, UNIT 110
 OTTAWA, ONTARIO K2E 1J5
 (613) 121-9226

MECHANICAL:
 BEKOLAY & ASSOCIATES LTD.
 SUITE 460 - 505 MARCH ROAD
 OTTAWA, ON. K2K 2M5
 (613) 254-5566

ELECTRICAL:
 MSP
 2611 QUEENSVIEW DR.
 OTTAWA, ON. K2B 8K2
 (613) 610-3192

STRUCTURAL:
 DAVID STRUCTURAL ENGINEERS
 #1 - 300 EARL GREY DRIVE
 SUITE 213
 OTTAWA ON. K2T 1C1
 (613) 502-9912



Highland Park Cemetery

NOTES:
 1. SEE LANDSCAPE DRAWING FOR EXISTING AND NEW VEGETATION.
 2. SEE SITE SERVICING AND GRADING DRAWING FOR EXISTING AND NEW GRADES AND SITE SERVICES.

LEGEND:
 DC DEPRESSED CURB
 (To be constructed as per paragraphs 3.8.3.2(2) (3) and (4) of the Ontario Building Code 2006)

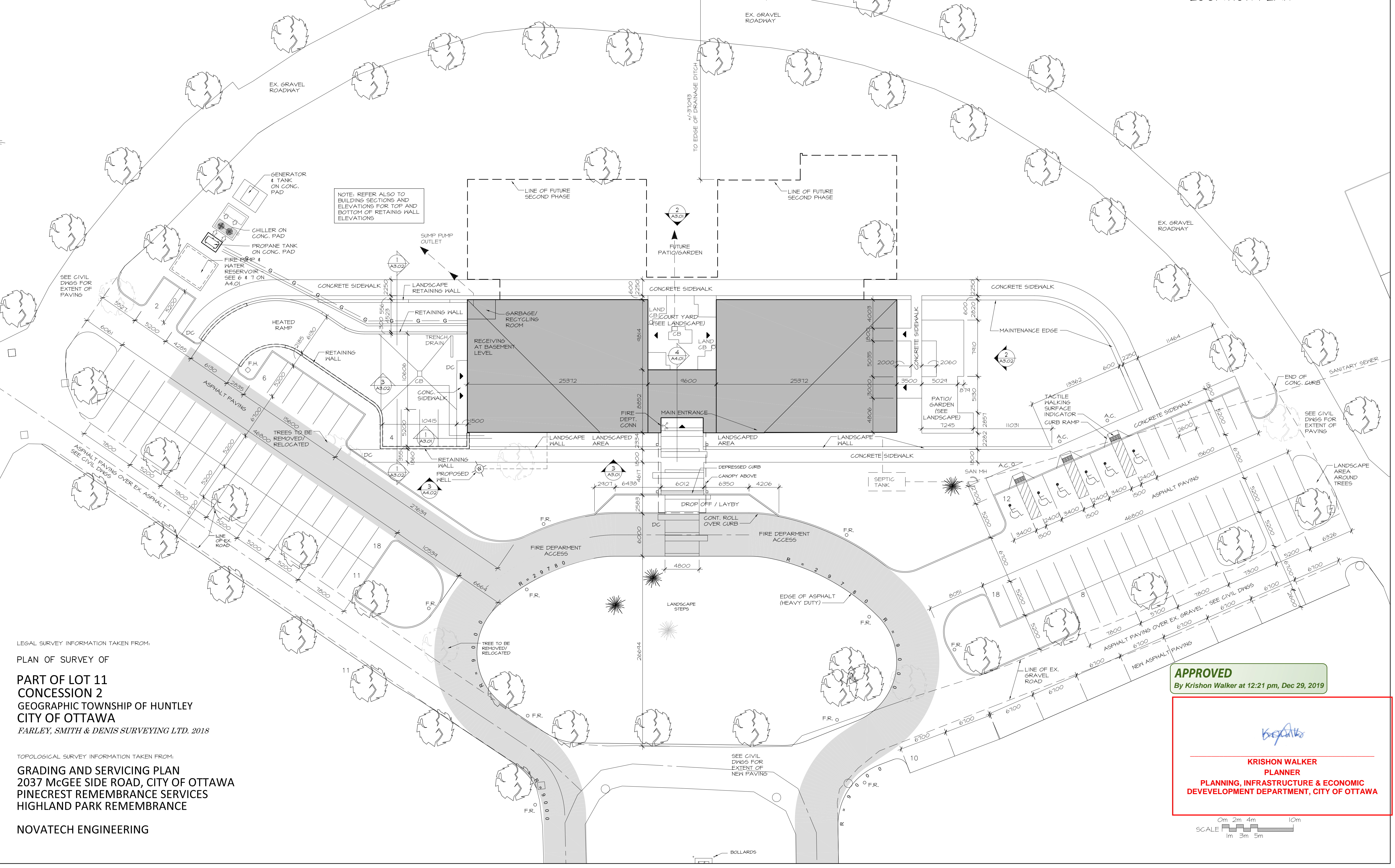
A.C. ACCESSIBLE PARKING SIGN - TO CITY OF OTTAWA STANDARDS

F.R. "FIRE ROUTE - NO PARKING" SIGN - TO CITY OF OTTAWA STANDARDS

L.Z. "LOADING ZONE - NO PARKING" SIGN - (LOADING/DROP OFF)

TONED AREA INDICATES EXTENT OF 6.0m WIDE FIRE DEPT. ACCESS ROUTE C/W 12.0 m CENTRELINE RADIUS. PROVIDE HEAVY DUTY ASPHALT PAVING FOR FULL WIDTH OF ASPHALT DRIVE AISLE

ACCESSIBLE PARKING SPACE C/W SYMBOL PAINTED ON ASPHALT



NOTE: REFER ALSO TO BUILDING SECTIONS AND ELEVATIONS FOR TOP AND BOTTOM OF RETAINING WALL ELEVATIONS

7	NOV. 20/19	RE-ISSUED - SITE PLAN CTRL
6	AUG. 24/19	RE-ISSUED - SITE PLAN CTRL
5	JUN. 24/19	ISSUED FOR BUDGETING
4	JUNE 17/19	ISSUED - SITE PLAN CONTROL
3	MAY 1/19	ISSUED FOR INFORMATION
2	JAN. 8/19	ISSUED FOR INFORMATION
1	AUG. 31/18	ISSUED FOR COSTING
no.	date	revision

It is the responsibility of the appropriate contractor to check and verify all dimensions on site and report all errors and/or omissions to the architect.

All contractors must comply with all pertinent codes and by-laws.

Do not scale drawings.

This drawing may not be used for construction until signed.

Copyright reserved.



Hobin Architecture Incorporated
 63 Pamilla Street
 Ottawa, Ontario
 Canada K1S 3K7
 T: 613-238-1200
 F: 613-238-2005
 E: mail@hobinarc.com
 hobinarc.com

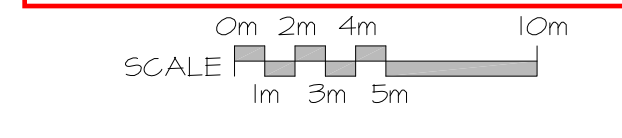
LEGAL SURVEY INFORMATION TAKEN FROM:
PLAN OF SURVEY OF PART OF LOT 11 CONCESSION 2 GEOGRAPHIC TOWNSHIP OF HUNTLEY CITY OF OTTAWA
 FARLEY, SMITH & DENIS SURVEYING LTD. 2018

TOPOLOGICAL SURVEY INFORMATION TAKEN FROM:
GRADING AND SERVICING PLAN 2037 MCGEE SIDE ROAD, CITY OF OTTAWA PINECREST REMEMBRANCE SERVICES HIGHLAND PARK REMEMBRANCE
 NOVATECH ENGINEERING

APPROVED
 By Krishon Walker at 12:21 pm, Dec 29, 2019

krishonwalker

KRISHON WALKER
 PLANNER
 PLANNING, INFRASTRUCTURE & ECONOMIC DEVELOPEMENT DEPARTMENT, CITY OF OTTAWA



PROJECT/LOCATION:
HIGHLAND PARK REMEMBRANCE
 2037 MCGEE SIDE RD

DRAWING TITLE:
SITE PLAN

DRAWN BY: 88	DATE: 17/12/2017	SCALE: 1:250
PROJECT: 1513		DRAWING NO.:
PROJECT NORTH		A1.02
TRUE NORTH		REVISION NO.: