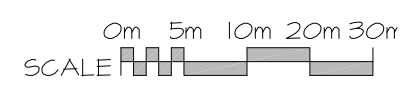


LOCATION PLAN

SITE INFORMATION

LEGAL DESCRIPTION: PART OF LOT 11 CONCESSION 2 GEOGRAPHIC TOWNSHIP OF HUNTLEY CITY OF OTTAWA R15(19) AND RC(120+)

ZONING	Required (R15)	Provided
LOT AREA (min.)	10,000 sq. m.	48,142.7 sq. m.
LOT WIDTH (min.)	75 m.	1,069.1 m.
SETBACKS		
REAR	10.0 m	201.9 m
CORNER SIDE YD	4.0 m	367.6 m
FRONT YARD	4.0 m	490.9 m (RC4)
MAX. BLDG. HT.	12.0 m	4.3 m
LOT COVERAGE	30% Max	0.2%
LANDSCAPE AREA	20% Min	96.0%
GROSS FLOOR AREA (PER ZONING BYLAW)		
BASEMENT	4133 sq. m.	
GROUND FLOOR	66086 sq. m.	
TOTAL	70219 sq. m.	
PARKING REQUIRED	1 space/100 sq. m. of GFA	
TOTAL (T X 102/100)	49 SPACES	
PARKING PROVIDED	84 SPACES	
LOADING SPACES REQUIRED		
0 - Phase One (Less than 1000 sq. m.)		
1 - Phase Two (1000-1999 sq. m.)		
LOADING SPACES PROVIDED		
1 - (To serve Phase One and Phase Two)		
BICYCLE SPACES REQUIRED		
1/500 sq. m. GFA	0 SPACES	
(Site is outside Village of Carp)		
DEVELOPMENT AREA		
BUILDING FOOTPRINT	1/2140 sq. m.	
PARKING FOOTPRINT	314335 sq. m.	
TOTAL	421275 sq. m.	



LEGAL SURVEY INFORMATION TAKEN FROM:

PLAN OF SURVEY OF

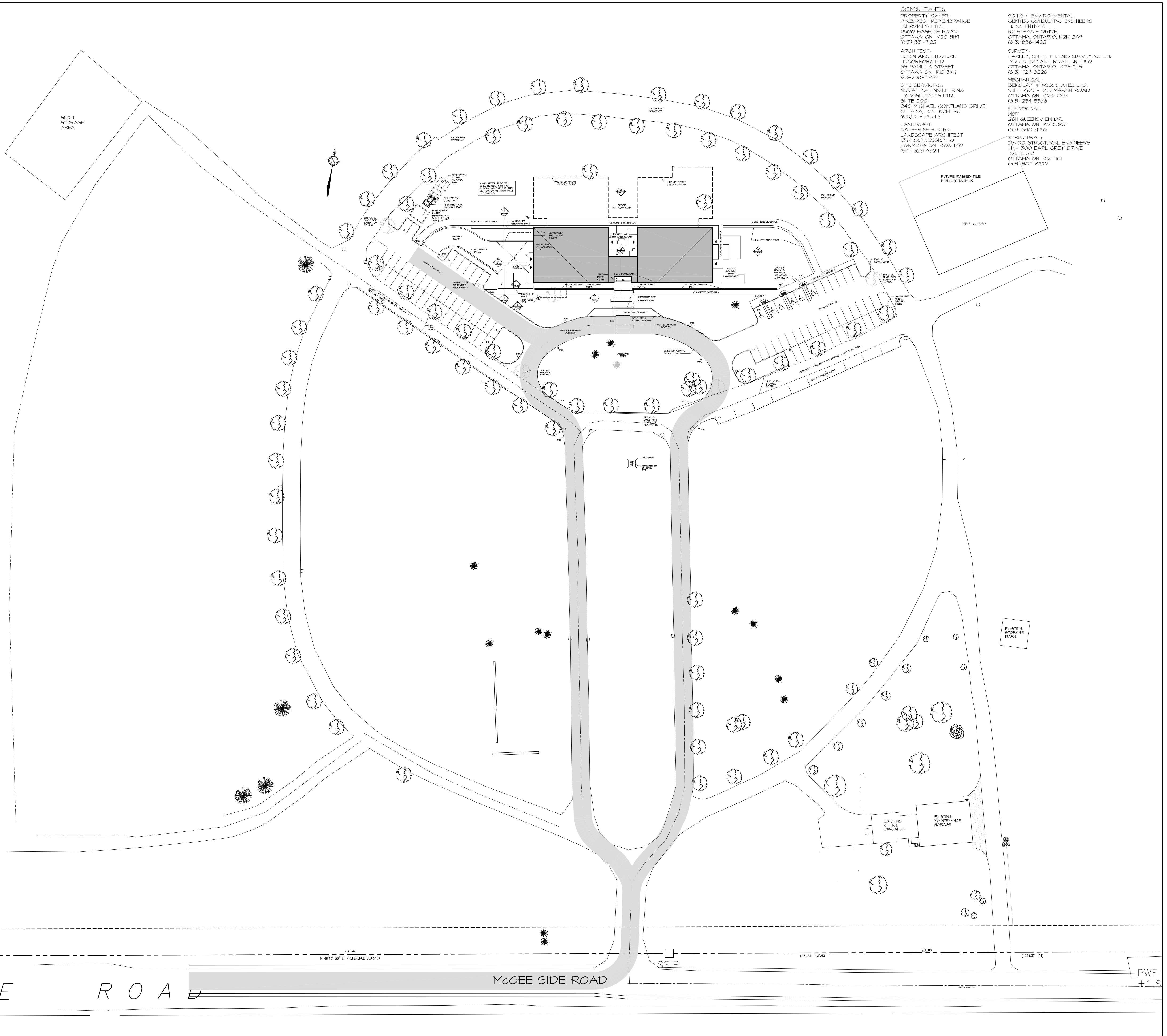
**PART OF LOT 11
CONCESSION 2
GEOGRAPHIC TOWNSHIP OF HUNTLEY
CITY OF OTTAWA**
FARLEY, SMITH & DENIS SURVEYING LTD. 2018

TOPOLOGICAL SURVEY INFORMATION TAKEN FROM:
**GRADING AND SERVICING PLAN
2037 MCGEE SIDE ROAD, CITY OF OTTAWA
PINECREST REMEMBRANCE SERVICES
HIGHLAND PARK REMEMBRANCE**

NOVATECH ENGINEERING

APPROVED
By Krishon Walker at 12:21 pm, Dec 29, 2019

krishon
KRISHON WALKER
PLANNER
PLANNING, INFRASTRUCTURE & ECONOMIC
DEVELOPMENT DEPARTMENT, CITY OF OTTAWA



- CONSULTANTS:**
- PROPERTY OWNER:
PINECREST REMEMBRANCE SERVICES LTD.
2500 BASELINE ROAD
OTTAWA, ON K2C 3H1
(613) 631-7122
 - ARCHITECT:
HOBIN ARCHITECTURE INCORPORATED
63 PAMILIA STREET
OTTAWA ON K1S 3K7
613-238-7200
 - SITE SERVICING:
NOVATECH ENGINEERING CONSULTANTS LTD.
SUITE 200
240 MICHAEL COXPLAND DRIVE
OTTAWA, ON K2M 1P6
(613) 294-9643
 - LANDSCAPE ARCHITECT:
CATHERINE H. KIRK
1371 CONCESSION 10
FORMOSA ON K0G 1K0
(519) 623-1524
 - SOILS & ENVIRONMENTAL:
GEMTEC CONSULTING ENGINEERS & SCIENTISTS
32 STEADIE DRIVE
OTTAWA, ONTARIO, K2K 2A9
(613) 636-1422
 - SURVEY:
FARLEY, SMITH & DENIS SURVEYING LTD
190 COLONNADE ROAD, UNIT #10
OTTAWA, ONTARIO K2E 1J5
(613) 121-8226
 - MECHANICAL:
BERGLAY & ASSOCIATES LTD.
SUITE 460 - 505 MARCH ROAD
OTTAWA ON K2K 2M5
(613) 254-5566
 - ELECTRICAL:
REP
2611 QUEENSWAY DR.
OTTAWA ON K2B 8K2
(613) 640-3752
 - STRUCTURAL:
DAIDO STRUCTURAL ENGINEERS
SUITE 215
300 EARL GREY DRIVE
OTTAWA ON K2T 1C1
(613) 302-8412



no.	date	revision
6	NOV. 20/19	RE-ISSUED - SITE PLAN CTRL
5	AUG. 29/19	RE-ISSUED - SITE PLAN CTRL
4	JUN. 24/19	ISSUED FOR BUDGETING
3	JUNE 17/19	ISSUED - SITE PLAN CONTROL
2	MAY 1/19	ISSUED FOR INFORMATION
1	AUG. 31/18	ISSUED FOR COSTING

It is the responsibility of the appropriate contractor to check and verify all dimensions on site and report all errors and/or omissions to the architect.

All contractors must comply with all pertinent codes and by-laws.

Do not scale drawings.

This drawing may not be used for construction until signed.

Copyright reserved.



Hobin Architecture Incorporated
63 Pamilia Street
Ottawa, Ontario
Canada K1S 3K7
T: 613-238-7200
F: 613-238-2005
E: mail@hobinarc.com
hobinarc.com

PROJECT/LOCATION:
HIGHLAND PARK REMEMBRANCE
2037 MCGEE SIDE RD

DRAWING TITLE:
SITE CONTEXT PLAN

DRAWN BY: BB	DATE: 17/12/207	SCALE: 1:600
PROJECT: 1513		DRAWING NO.:
PROJECT NORTH		A1.01
TRUE NORTH		REVISION NO.:

A1.01 Site Plan

FILE No. D07-12-19-0112