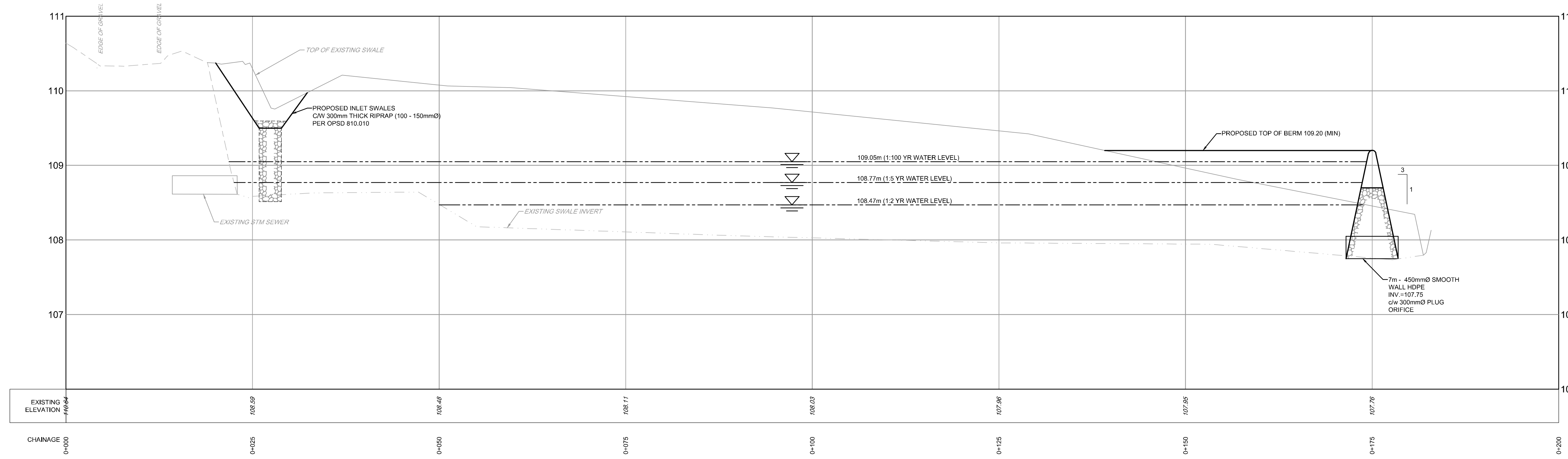


APPROVED
By Krishon Walker at 12:19 pm, Dec 29, 2019

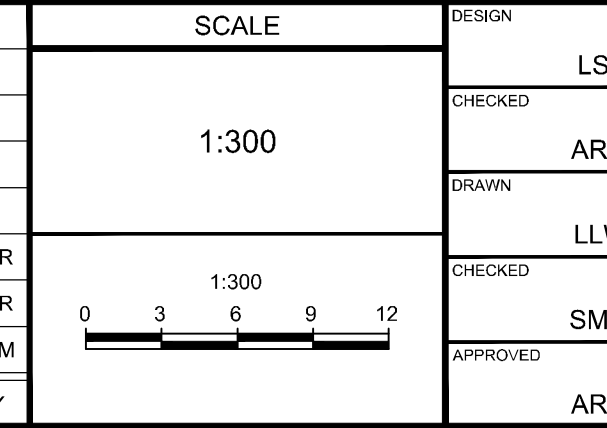
Krishon Walker
KRISHON WALKER
PLANNER
PLANNING, INFRASTRUCTURE & ECONOMIC
DEVELOPMENT DEPARTMENT, CITY OF OTTAWA



- CONSULTANTS**
- PROPERTY OWNER:** FINECREST REMEMBRANCE SERVICES LTD. 2500 BASELINE ROAD OTTAWA, ON K2C 3H9 613-831-7122
 - ARCHITECT:** HOBIN ARCHITECTURE INCORPORATED 83 PAMILLA STREET OTTAWA, ON K1S 3K7 613-238-7200
 - SITE SERVICES:** NOVATECH ENGINEERING CONSULTANTS LTD. SUITE 200 240 MICHAEL COWPLAND DRIVE OTTAWA, ON K2M 1P6 613-254-9543
 - LANDSCAPE:** CATHERINE H. KIRK LANDSCAPE ARCHITECT 1378 CONGRESSION 10 FORMOSA, ON K0G 1W0 613-623-8324
 - SOILS & ENVIRONMENTAL:** GEMTEC CONSULTING ENGINEERING & SCIENTISTS 32 STEACHE DRIVE OTTAWA, ON K2K 2A9 613-836-1422
 - SURVEY:** FARLEY, SMITH & DENIS SURVEYING LTD. 190 COLONNADE ROAD, UNIT #10 OTTAWA, ON K2E 7J5 613-722-8528
 - MECHANICAL:** BEKOLAY & ASSOCIATES LTD. SUITE 400 - 505 MARCH ROAD OTTAWA, ON K2K 2M5 613-254-5566
 - ELECTRICAL:** WSP 2611 QUEENSVIEW DR. OTTAWA, ON K2K 8K2 613-690-3752
 - STRUCTURAL:** DARDO STRUCTURAL ENGINEERS #11 - 300 EARL GREY DRIVE SUITE 213 OTTAWA, ON K2T 1C1 613-302-8872

NOTE:
THE POSITION OF ALL POLE LINES, CONDUITS, WATERMANS, SEWERS AND OTHER UNDERGROUND AND OVERGROUND UTILITIES AND STRUCTURES IS NOT NECESSARILY SHOWN ON THE CONTRACT DRAWINGS, AND WHERE SHOWN, THE ACCURACY OF THE POSITION OF SUCH UTILITIES AND STRUCTURES IS NOT GUARANTEED. BEFORE STARTING WORK, DETERMINE THE EXACT LOCATION OF ALL SUCH UTILITIES AND STRUCTURES AND ASSUME ALL LIABILITY FOR DAMAGE TO THEM.

| No. | REVISION | DATE | BY |
|-----|----------------------------------|------------|-----|
| 3 | REVISED PER COMMENTS | Nov 18/19 | AAR |
| 2 | REVISED PER COMMENTS | AUG 28/19 | AAR |
| 1 | ISSUED FOR SITE PLAN APPLICATION | JUNE 03/19 | ARM |



FOR REVIEW ONLY

DESIGN: LSC
CHECKED: ARM
DRAWN: LLW
CHECKED: SMG
APPROVED: ARM

NOVATECH
Engineers, Planners & Landscape Architects
Suite 200, 240 Michael Cowpland Drive
Ottawa, Ontario, Canada K2M 1P6
Telephone: (613) 254-9543
Facsimile: (613) 254-5867
Website: www.novatech-eng.com

LOCATION
2037 MCGEE SIDE ROAD, CITY OF OTTAWA
HIGHLAND PARK REMEMBRANCE

DRAWING NAME
OUTLET PLAN AND PROFILE

PROJECT No.: 101063
REV # 3
DRAWING No.: 101063-PP1

C:\Users\101063\OneDrive\101063-PP1.dwg PPR, Nov 18, 2019 - 2:58pm, aar@novatech.com

D07-12-19-0112