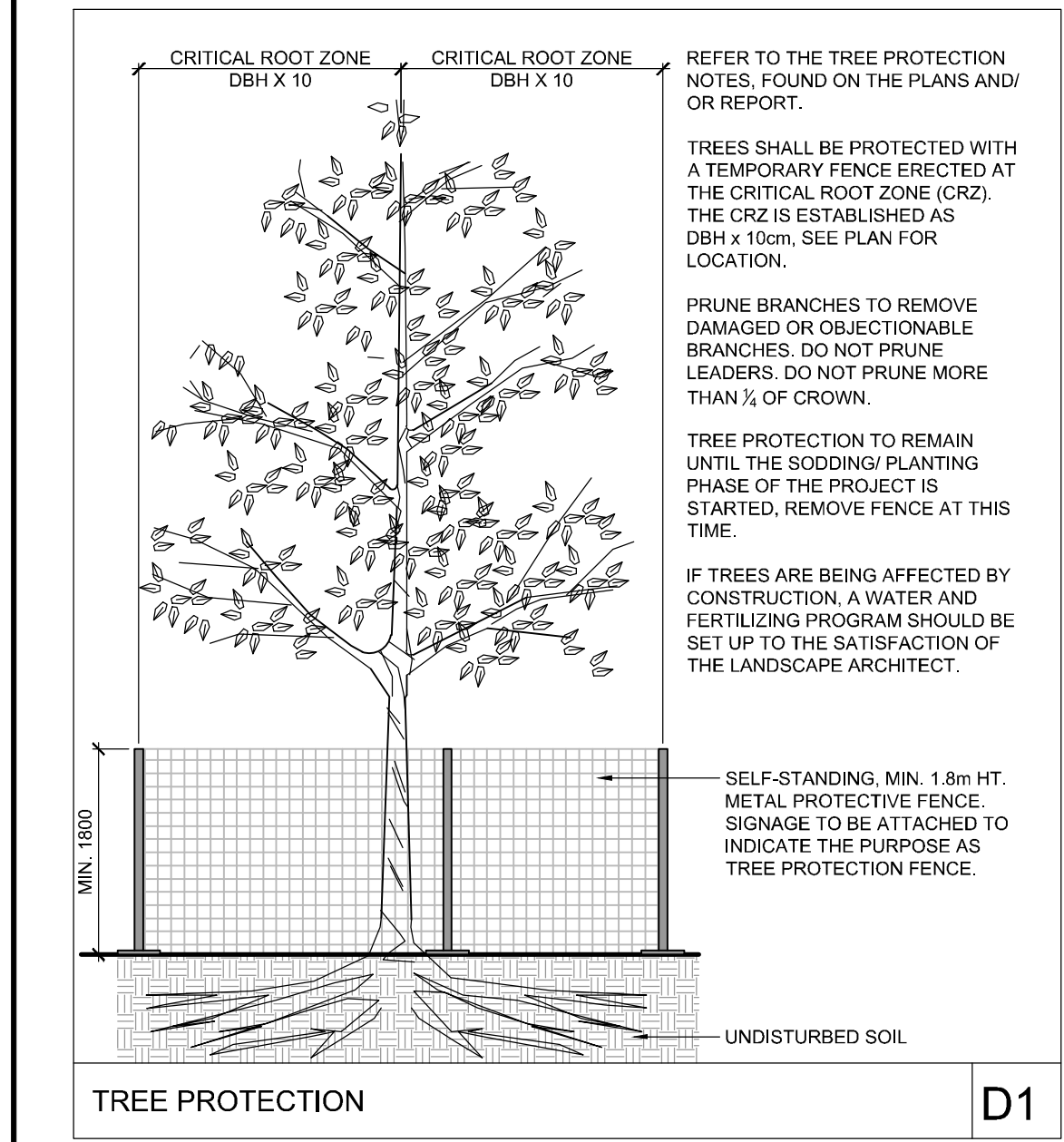
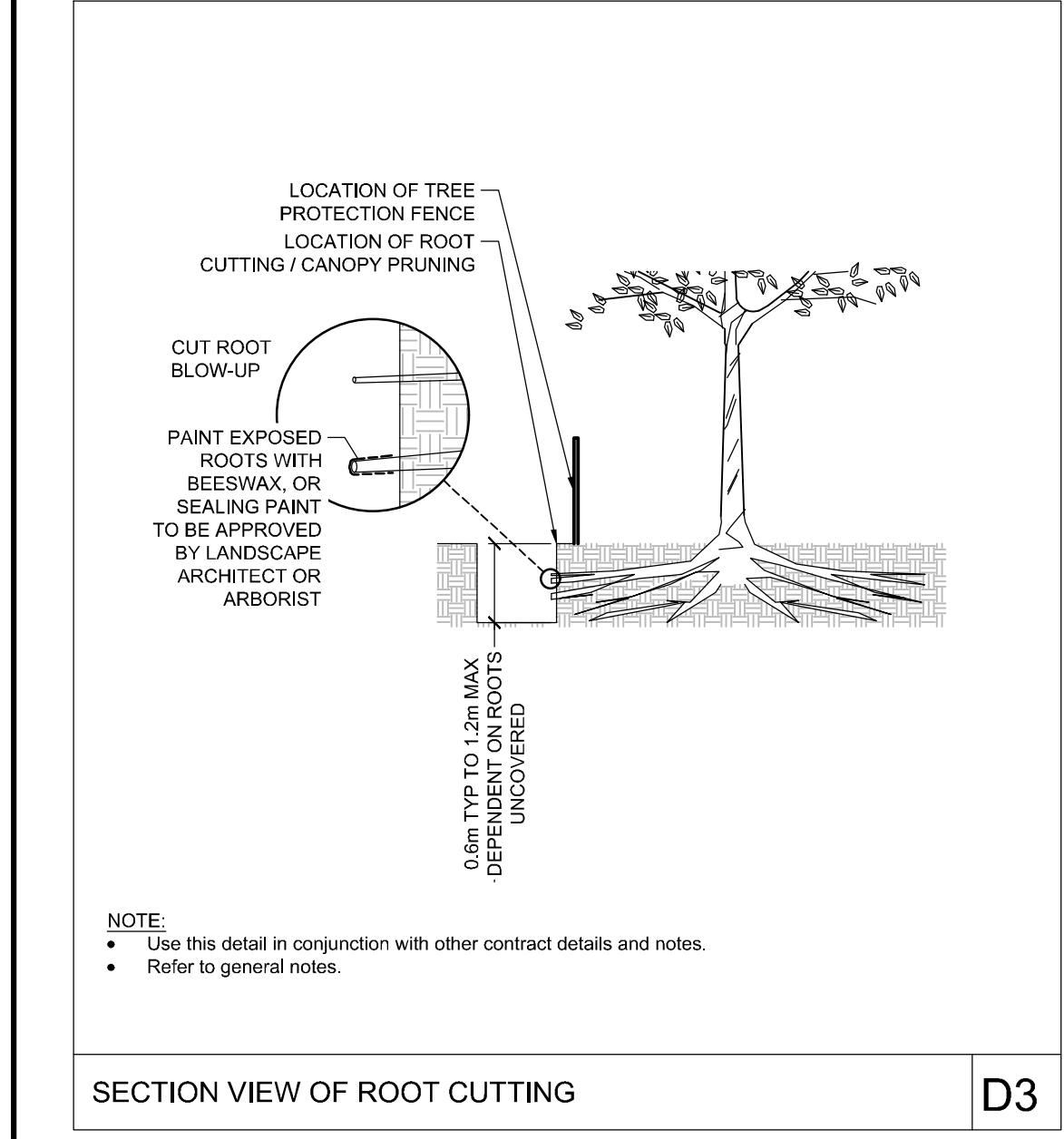


U:\2014\114025-2A\Grande Allee Tree Conservation\114025-2A-Grande Allee Tree Conservation.dwg, TCR, May 18, 2018 - 11:54am, mjbrown

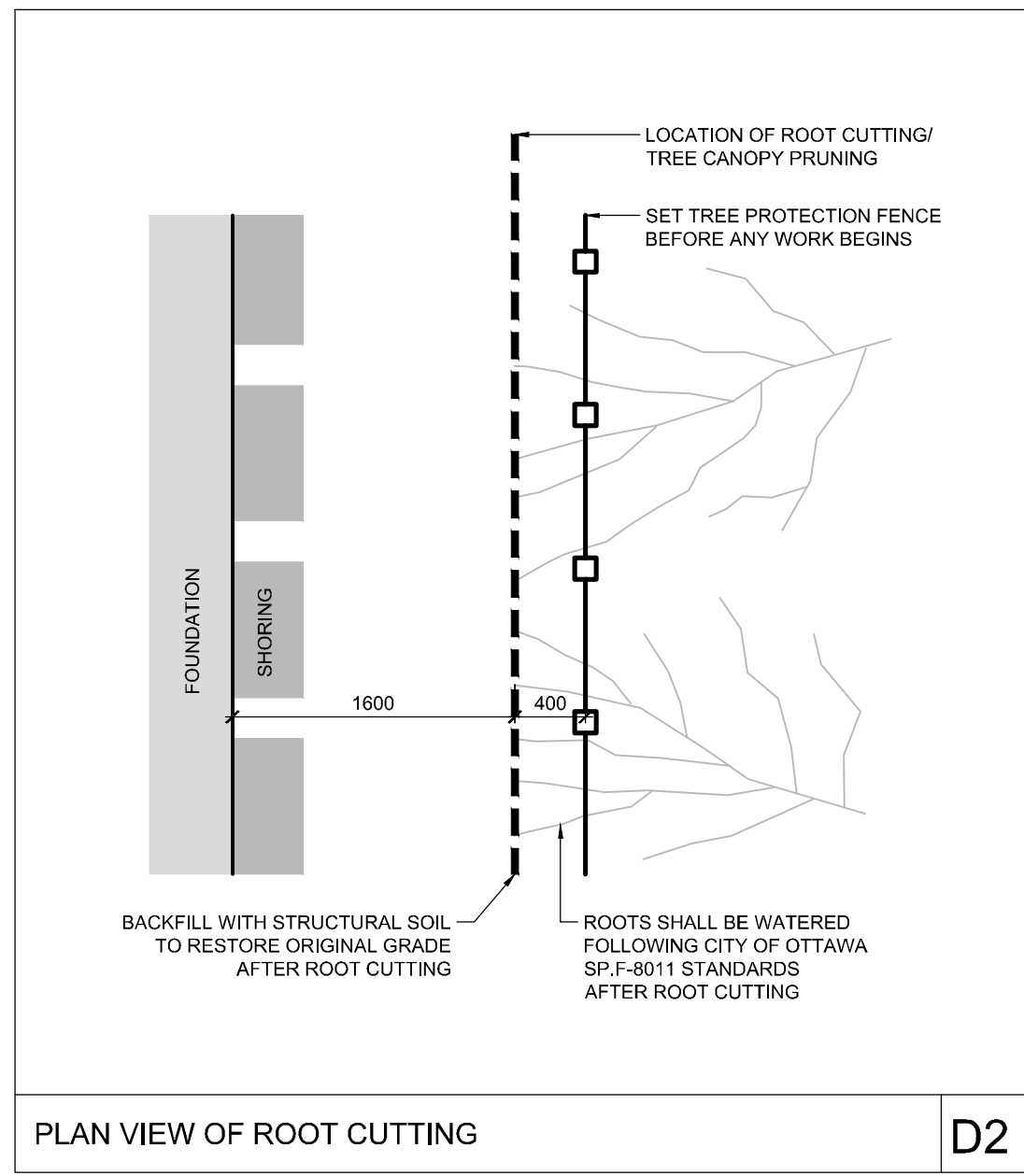
NOTE:
THE POSITION OF ALL POLE LINES, CONDUITS, WATERMANS, SEWERS AND OTHER UNDERGROUND AND OVERGROUND UTILITIES AND STRUCTURES IS NOT NECESSARILY SHOWN ON THE CONTRACT DRAWINGS, AND WHERE SHOWN, THE ACCURACY OF THE POSITION OF SUCH UTILITIES AND STRUCTURES IS NOT GUARANTEED. BEFORE STARTING WORK, DETERMINE THE EXACT LOCATION OF ALL SUCH UTILITIES AND STRUCTURES AND ASSUME ALL LIABILITY FOR DAMAGE TO THEM.



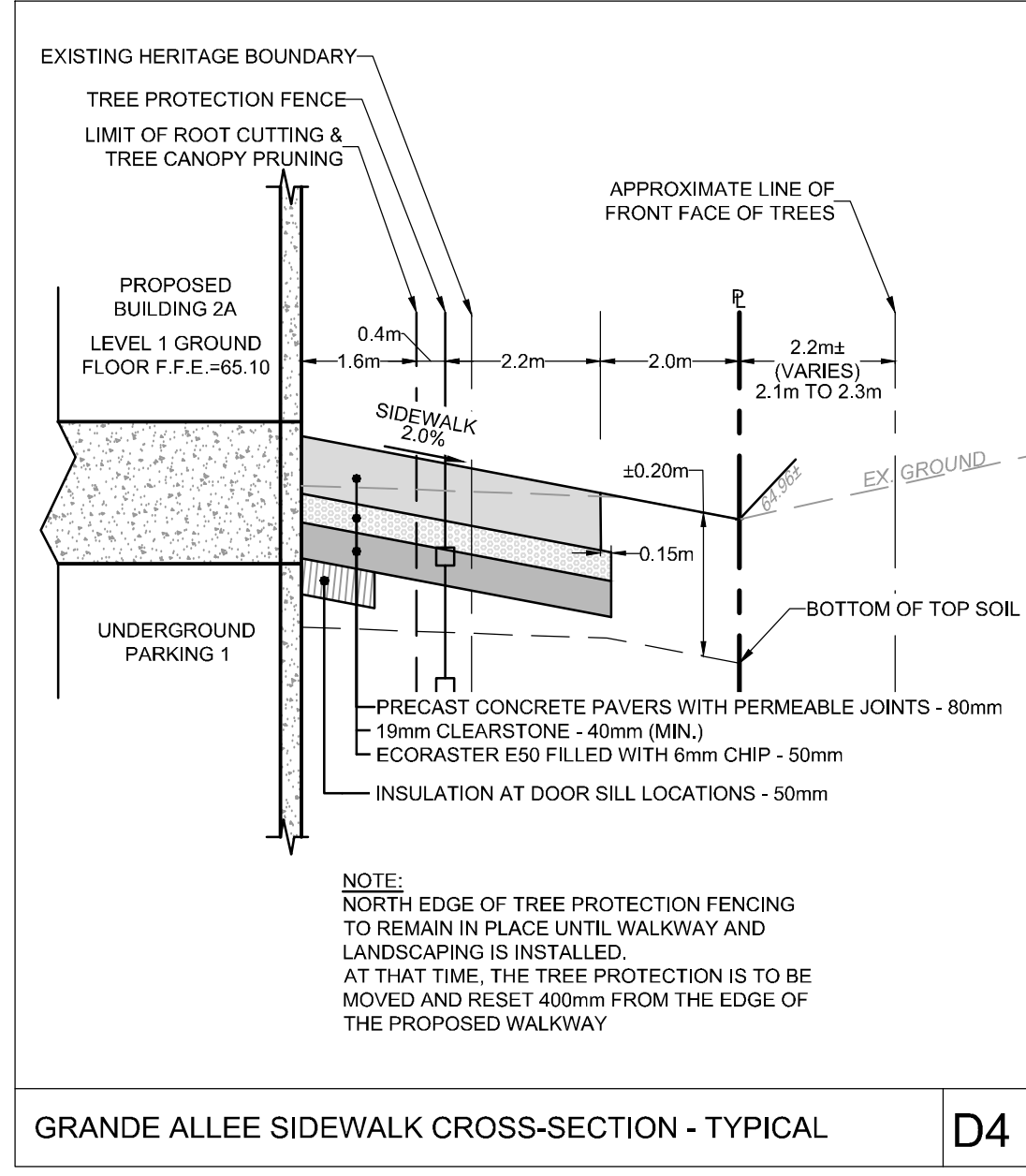
D1



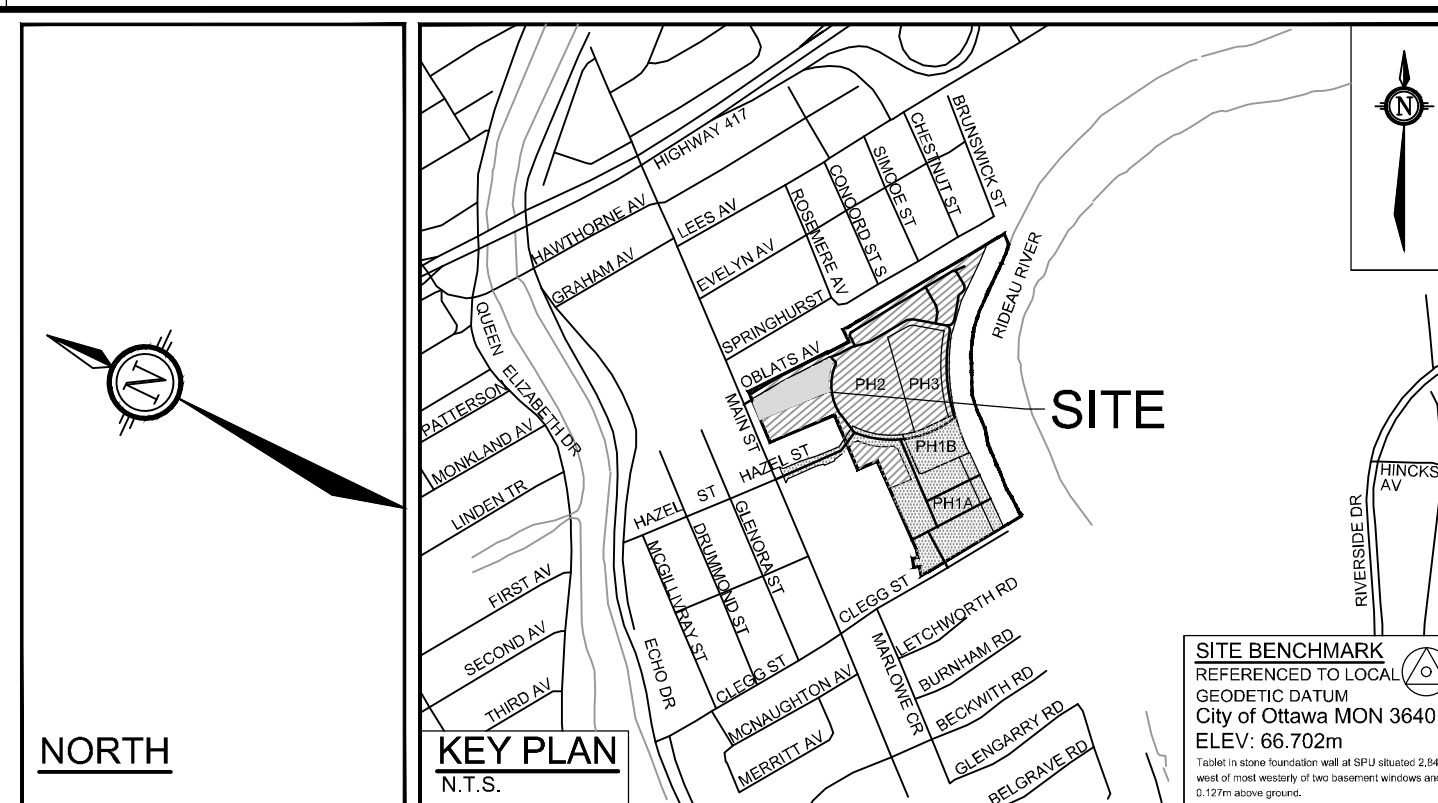
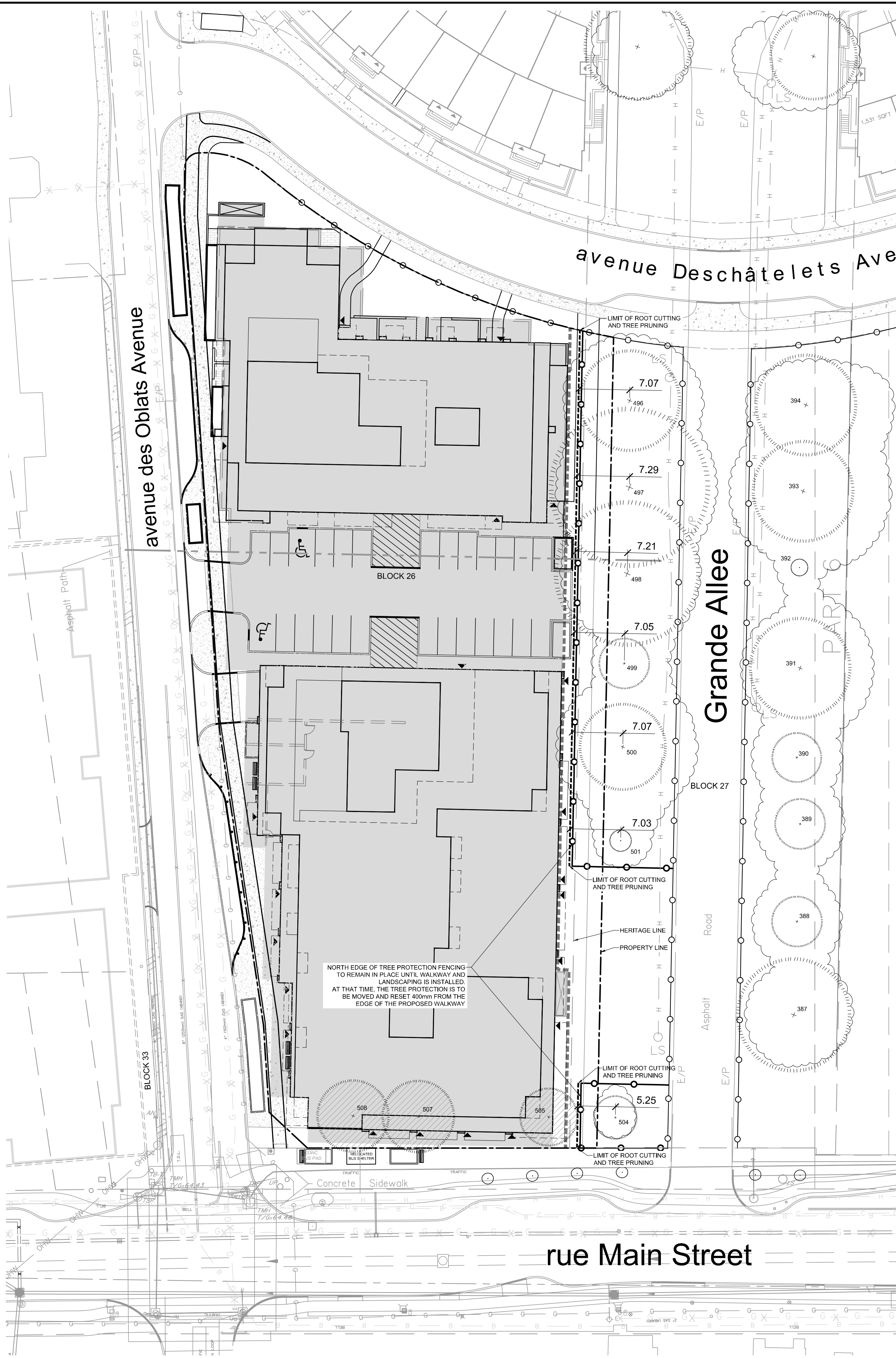
D3



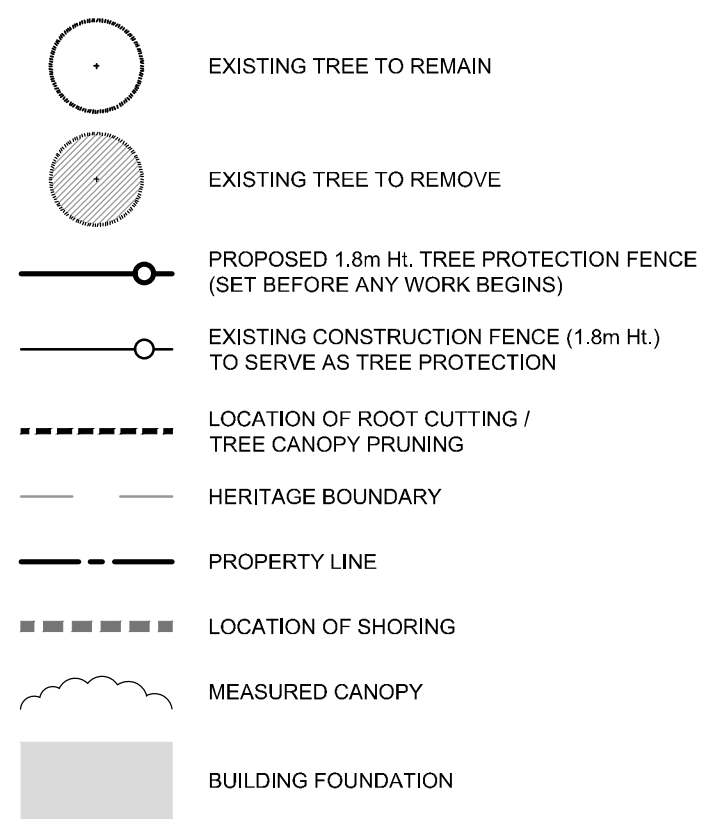
D2



D4



LANDSCAPE LEGEND:



TREE INVENTORY (Conducted October 2017):

No.	Botanical Name	Common Name	DBH (m)	CRZ (m)	Condition	Remarks	Recomm.
387	Acer rubrum	Red Maple	0.80	8.00	P	Black bark	PROTECT
388	Acer saccharum	Sugar Maple	0.55	5.50	G		PROTECT
389	Acer rubrum	Red Maple	0.35	3.50	G		PROTECT
390	Acer rubrum	Red Maple	0.35	3.50	G		PROTECT
391	Acer rubrum	Red Maple	0.70	7.00	F	Low vigour / Seams	PROTECT
392	Acer rubrum	Red Maple	0.12	1.20	G		PROTECT
393	Acer rubrum	Red Maple	0.70	7.00	P	Large seams / Branch stubs not healing	PROTECT
394	Acer rubrum	Red Maple	0.70	7.00	P	Branch stubs not healing	PROTECT
496	Acer rubrum	Red Maple	0.70	7.00	F	Wound at base / Cavity developing	PROTECT
497	Acer saccharum	Silver Maple	1.10	11.00	F	Large darkface wound / Several seams	PROTECT
498	Acer saccharum	Silver Maple	1.00	10.00	F	Few open wounds / Cavity / Internal rot	PROTECT
499	Acer rubrum	Red Maple	0.35	3.50	P	Significant V-crotch with wound	PROTECT
500	Acer rubrum	Red Maple	0.65	6.50	G	Seam	PROTECT
501	Acer rubrum	Red Maple	0.15	1.50	G		PROTECT
504	Acer rubrum	Red Maple	0.30	3.00	G		PROTECT
505	Acer saccharum	Sugar Maple	0.40	4.00	P	Major wound	Conflict
507	Acer saccharum	Sugar Maple	0.50	5.00	G		Conflict
508	Acer saccharum	Sugar Maple	0.50	5.00	F	Small branch wound / V-crotch	Conflict

PROTECT	Protect as per detail D1 and related notes
Conflict	Remove due to conflict with construction

TREE PROTECTION NOTES

The following protection measures must be implemented for retained trees, both on site and on adjacent sites, prior to any tree removal or site works and maintained for the duration of construction on site:

- Under the guidance of a Professional Forester, erect a fence as indicated on this plan. The CRZ is calculated as DBH x 10m. Refer to the Tree Protection Fence detail.
- When trees to be removed overlap with the CRZ of trees to be preserved: cut roots at the edge of the CRZ and grind down stumps after tree removals, do not pull out stumps. Ensure there is not root pulling or disturbance of the ground within the CRZ.
- If roots must be cut, roots 20mm or larger should be cut at right angles with clean, sharp horticultural tools without tearing, crushing, or pulling. Refer to City of Ottawa Specification S.P. F-8011 Tree Protection, Excavation of Root Zone.
- Hand work only where required within the CRZ as indicated by the tree protection fence; absolutely no machinery permitted.
- Do not place any material or equipment within the CRZ of any tree.
- Do not attach any signs, notices or posters to any tree.
- Do not disturb, raise or lower the existing grade within the CRZ without approval.
- Only directional drill services within the CRZ of a tree.
- Do not damage the root system, trunk, or branches of any tree.
- Ensure that exhaust fumes from all equipment are directed away from any tree canopy.

GENERAL NOTES

- Before any work begins, a line will be staked and painted on site for the location of tree protection fence.
- Canopy pruning to be scheduled and executed in the winter of 2019.
- Root pruning to be scheduled and executed as soon as frost comes out of the ground, while the tree is still dormant.
- Use Hydro-Vac and hand shovel to expose roots, under the direction of a Professional Forester. Excavate to a minimum depth of 600mm. If roots are uncovered at 600mm, continue to excavate deeper until no more roots are uncovered. Excavate to a maximum depth of 1200mm.
- Root cutting by hand, as roots are exposed. Exposed roots shall be neatly cut following proper arboricultural procedures.
- All cut roots 20mm diameter or larger shall be sealed with beeswax, or an approved equivalent. See detail D3.
- Excavation and backfilling are to be sequenced in a continuous operation, so that roots are not exposed for more than a couple of hours. If the trench is to remain open longer, roots are to be watered and covered with 3 layers of wet burlap and a top layer of plastic.
- Backfill trench with structural soil.

No.	REVISION	DATE	BY	No.	REVISION	DATE	BY
1.	ISSUED FOR CONSTRUCTION	APR 9/19	RJ	1.	ISSUED FOR CONSTRUCTION	APR 9/19	RJ
2.	REVISED PER CITY COMMENTS	APR 4/19	RJ	2.	ISSUED WITH SITE PLAN APPLICATION	MAR 9/18	JP
3.	ISSUED FOR CITY REVIEW	MAR 21/19	RJ	3.	ISSUED FOR COORDINATION	DEC 4/17	JP
4.	ISSUED FOR CITY REVIEW	FEB 1/19	RJ				
5.	ISSUED FOR CITY REVIEW	DEC 7/18	RJ				
6.	REVISED PER CITY COMMENTS	JUN 13/18	JP				
7.	ISSUED FOR COORDINATION	MAR 9/18	JP				
8.	ISSUED FOR CONSTRUCTION	APR 9/19	RJ				
9.	REVISED PER CITY COMMENTS	MAY 16/19	RJ				

SCALE	DESIGN	CHECKED	DRAWN	APPROVED
1:300	MT	JP	MT	JP
1:300	JP	JP	JP	RJ

LOCATION
CITY OF OTTAWA
Greystone Village Condo 2A-2B

DRAWING NAME
GRANDE ALLEE
TREE CONSERVATION REPORT

PROJECT NO.
114025-00

REV
REV # 9

DRAWING NO.
114025-TCR

No. D07-12-18-0040