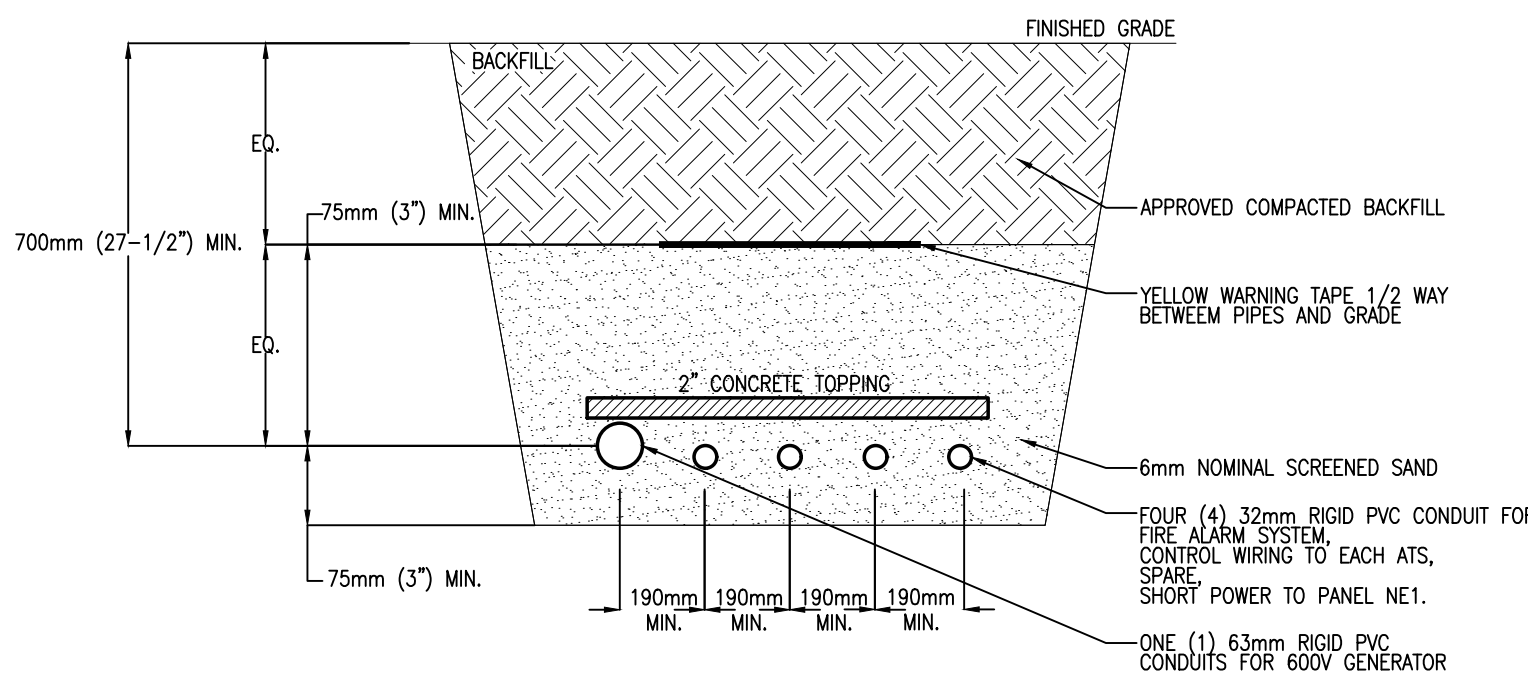


1
E002SP
1:750

GENERAL NOTES:

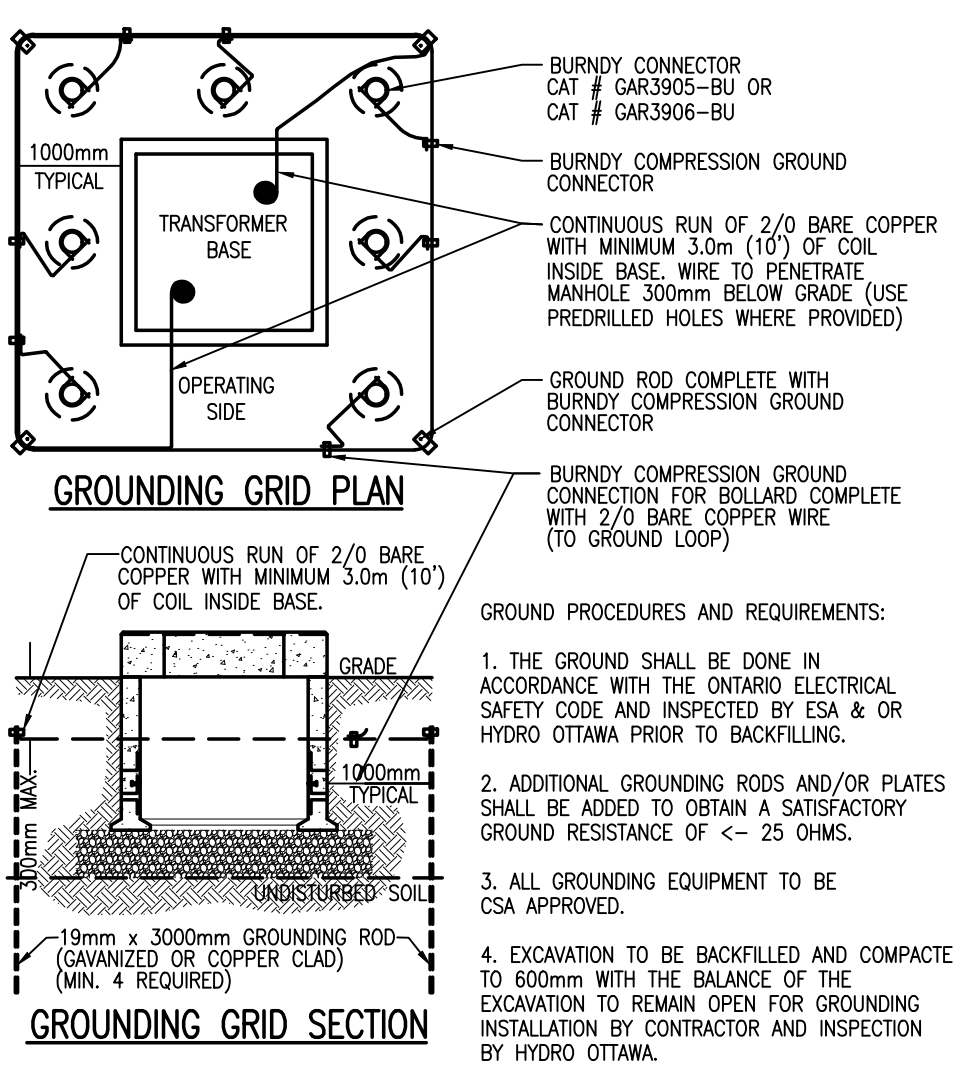
- COORDINATE BURIED SERVICES WITH ALL OTHER SERVICES (WATER, SEWER, GAS, HYDRO, TELEPHONE, CABLE, ETC.) REFER TO RELATED SITE SERVICES DRAWINGS.
- COORDINATE WITH UTILITY AND TELEPHONE/CATV SERVICES FOR LOCATION AND FINAL CONDUIT REQUIREMENTS.
- COORDINATE LOCATION OF LIGHTING FIXTURES WITH LANDSCAPE PLANS.
- EXCAVATION, BACKFILL AND CONCRETE, REINFORCING ASSOCIATED WITH ELECTRICAL WORK TO BE BY GENERAL CONTRACTOR.
- USE PVC FOR UNDERGROUND ONLY. CHANGE TO EMT INSIDE BUILDING.
- PROVIDE PVC/EMT TRANSITION ADAPTORS AT EXTERIOR TO INTERIOR CONDUITS.



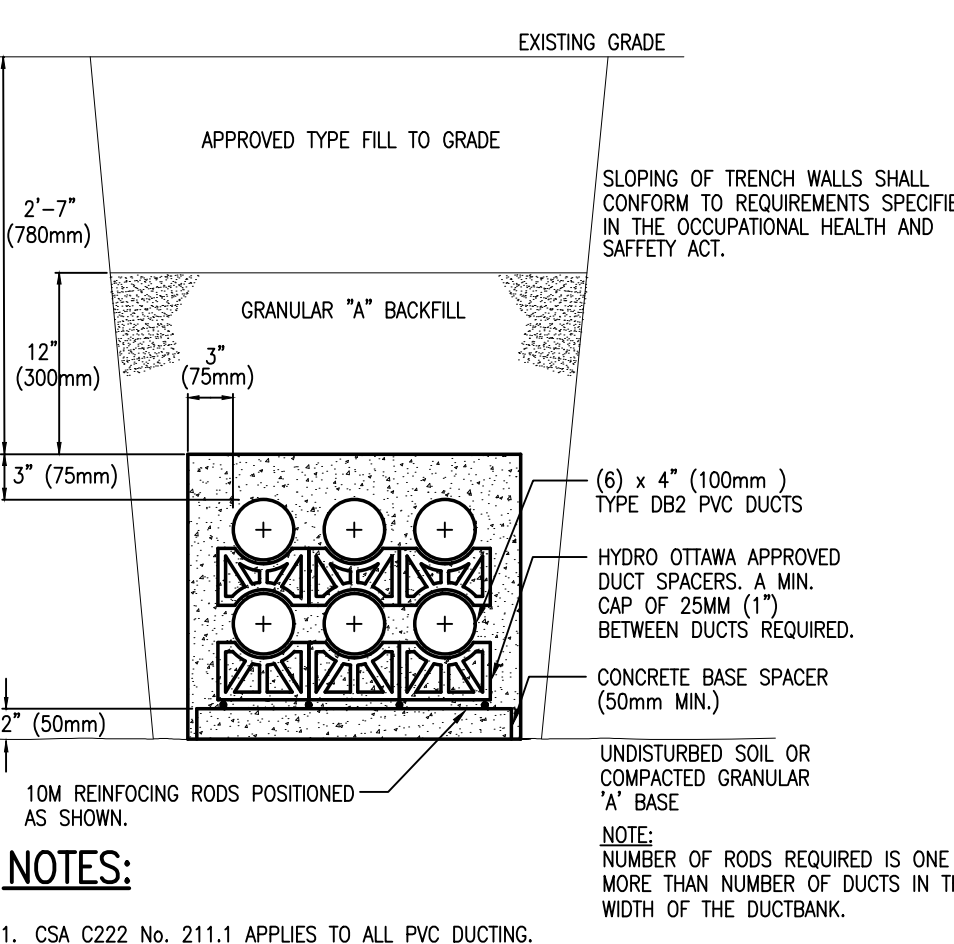
2
E002SP
N.T.S.

LIGHTING FIXTURE SCHEDULE									
TYPE	DESCRIPTION	CATALOG NUMBER	QTY	TYPE	WATTS	COLOUR	VOLT	MOUNTING	REMARKS
A	EXTERIOR 23' POLE LIGHT	MCGRW-EDISON # GLEON-AF-02-LED-E1-SL4-7030-HSS	32	LED	113W	3000	347	POLE	(23') 5" SQUARE POLE C/W SNOW GUARD SEE DETAIL 7/E002.
B	EXTERIOR 23' POLE LIGHT	MCGRW-EDISON # GLEON-AF-02-LED-E1-SL3-7030-HSS	32	LED	113W	3000	347	POLE	(23') 5" SQUARE POLE C/W SNOW GUARD SEE DETAIL 7/E002.
C	EXTERIOR 13' POLE LIGHT	LIGMAN # LI-21171-14-W30	1	LED	59W	3000	347	POLE	13' POLE C/W ACCESSORIES MOUNTED AT 13' A.F.F.
D	EXTERIOR LED WALL PACK	EATON-MCGRW-EDISON # GWC-AF-01-LED-E1-T4FT-7030	16	LED	53.8W	4000	347	WALL	PROVIDE ALL REQUIRED ACCESSORIES.

5
E002SP
N.T.S.

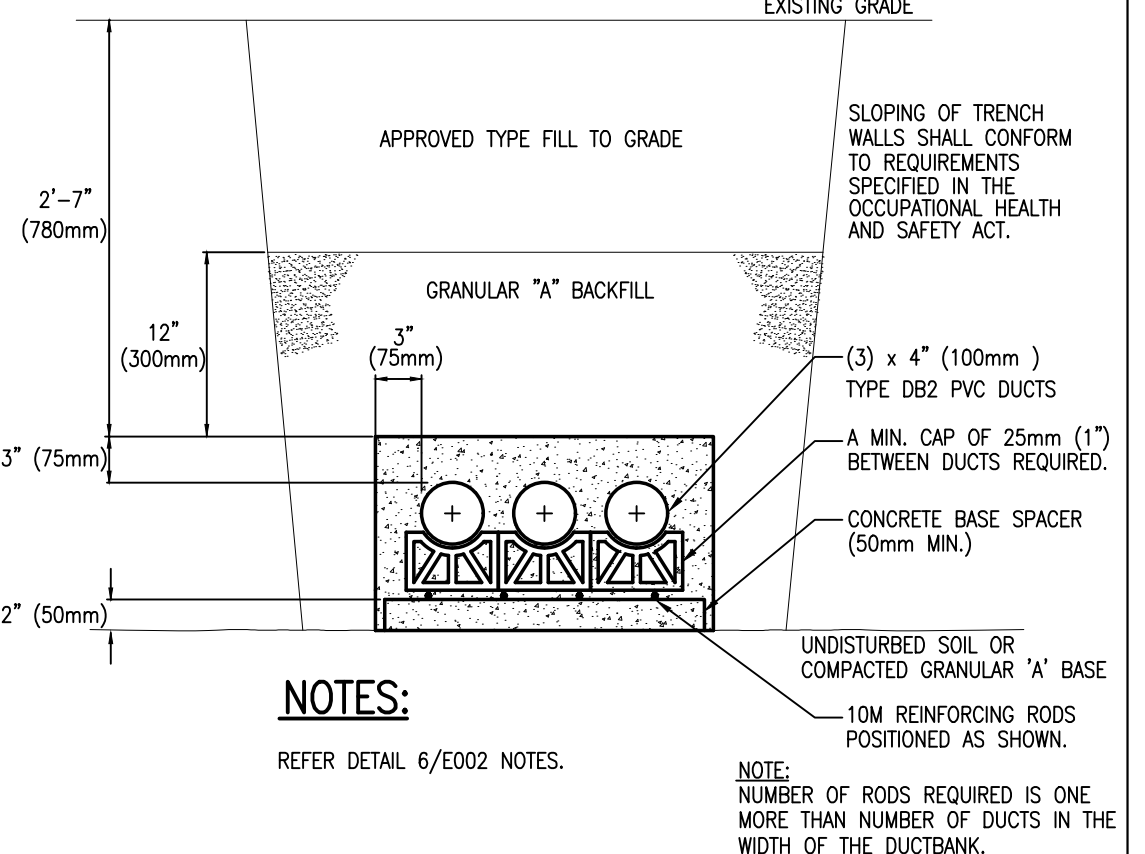


4
E002SP
N.T.S.



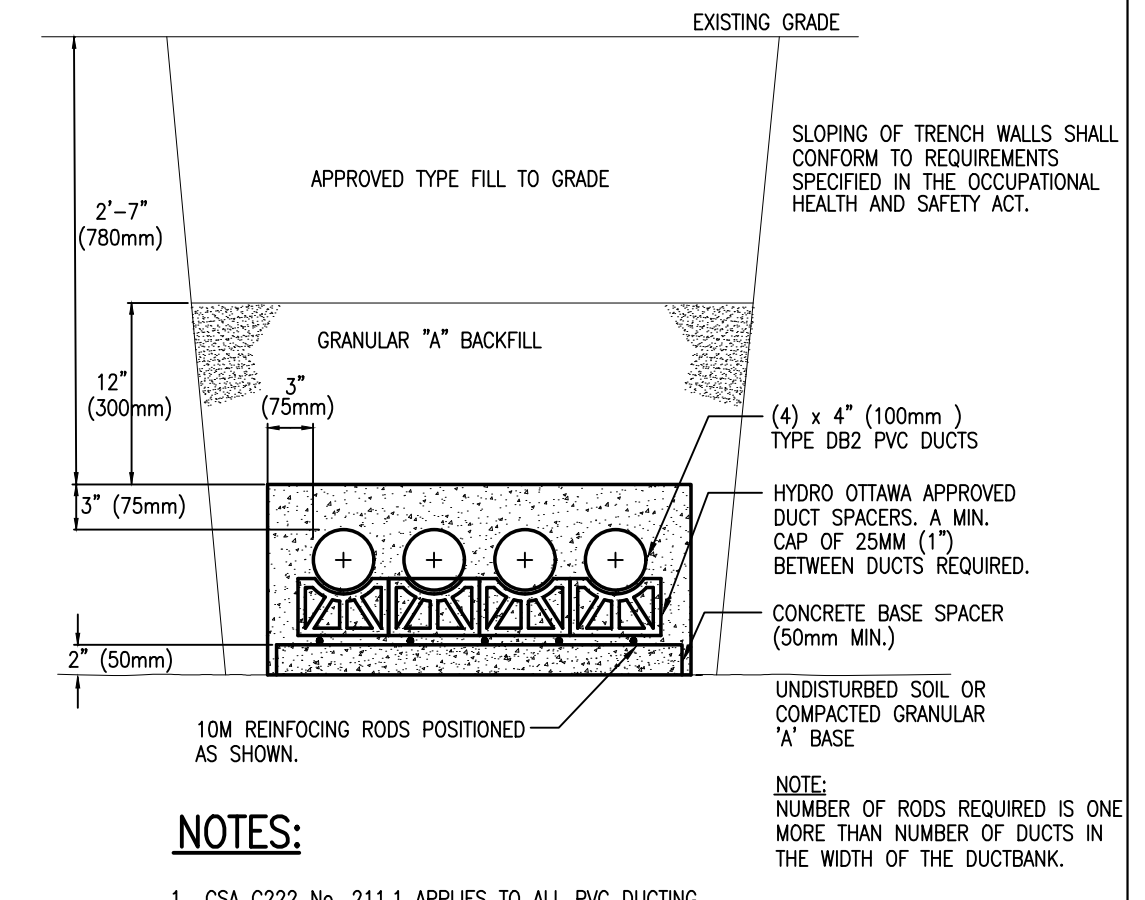
- NOTES:**
- CSA C222 No. 211.1 APPLIES TO ALL PVC DUCTING.
 - ONLY MATERIAL APPROVED BY HYDRO OTTAWA TO BE USED.
 - DUCT JOINTS TO BE GLUED USING AN APPROVED "PVC" SOLVENT, WHEN APPLICABLE.
 - REINFORCING RODS FULL LENGTH OF CONCRETE ENCASED DUCTS. OVERLAP JOINTS AND TIE AT BOTH ENDS. DRILL AND DOWEL RODS TO CONCRETE STRUCTURE.
 - DUCT SPACERS TO BE PLACED AT A MAXIMUM OF 1500mm AND WITHIN 150MM OF COUPLING. PLASTIC DUCT SPACERS TO BE USED ONLY IF CONCRETE DUCT SPACERS ARE UNAVAILABLE.
 - FORMS REQUIRED FOR FULL LENGTH OF CONCRETE ENCASED DUCT STRUCTURE.
 - DUCTS AND TRENCHES MUST BE INSPECTED BY HYDRO OTTAWA BEFORE ANY CONCRETE IS POURED.
 - ALL UNDERGROUND UTILITIES MUST BE CONTACTED AND ALL NECESSARY PERMITS MUST BE OBTAINED BY OWNER OR CONTRACTOR.
 - CONTRACTOR MUST ENSURE THAT ALL DUCTS ARE CLEANED, RODDED AND THAT A 6MM (1/4") POLYPROPYLENE ROPE IS LEFT IN EACH DUCT.

5
E002SP
N.T.S.



NOTES:
REFER DETAIL 6/E002 NOTES.

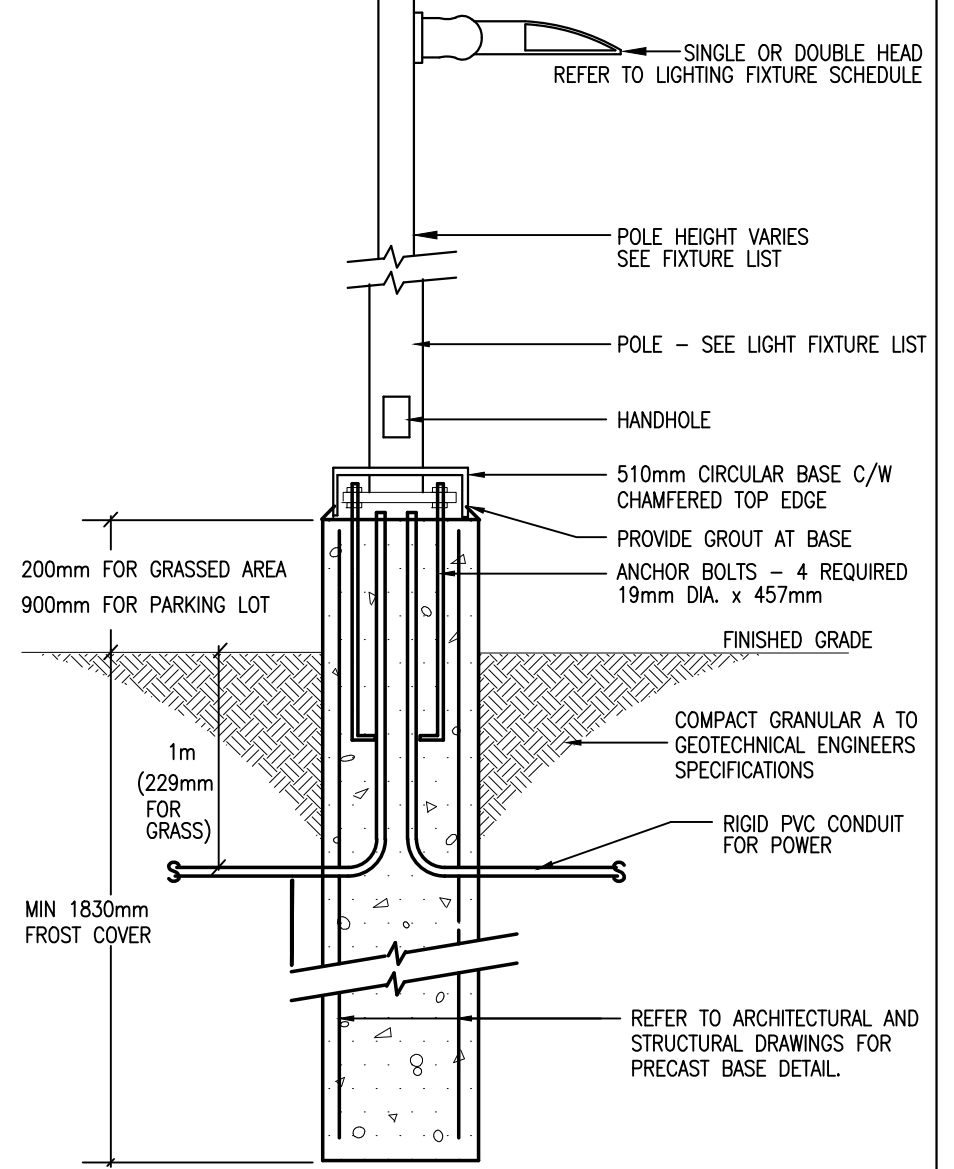
3
E002SP
N.T.S.



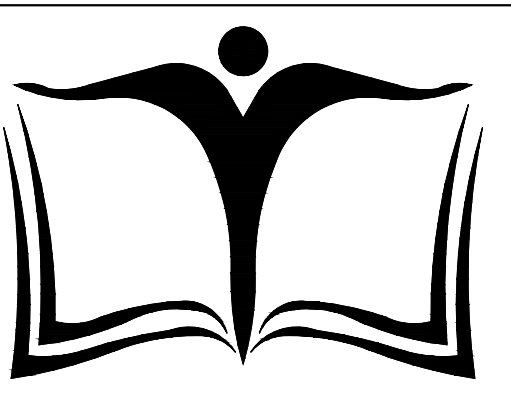
NOTES:

- CSA C222 No. 211.1 APPLIES TO ALL PVC DUCTING.
- ONLY MATERIAL APPROVED BY HYDRO OTTAWA TO BE USED.
- DUCT JOINTS TO BE GLUED USING AN APPROVED "PVC" SOLVENT, WHEN APPLICABLE.
- REINFORCING RODS FULL LENGTH OF CONCRETE ENCASED DUCTS. OVERLAP JOINTS AND TIE AT BOTH ENDS. DRILL AND DOWEL RODS TO CONCRETE STRUCTURE.
- DUCT SPACERS TO BE PLACED AT A MAXIMUM OF 1500mm AND WITHIN 150MM OF COUPLING. PLASTIC DUCT SPACERS TO BE USED ONLY IF CONCRETE DUCT SPACERS ARE UNAVAILABLE.
- FORMS REQUIRED FOR FULL LENGTH OF CONCRETE ENCASED DUCT STRUCTURE.
- DUCTS AND TRENCHES MUST BE INSPECTED BY HYDRO OTTAWA BEFORE ANY CONCRETE IS POURED.
- ALL UNDERGROUND UTILITIES MUST BE CONTACTED AND ALL NECESSARY PERMITS MUST BE OBTAINED BY OWNER OR CONTRACTOR.
- CONTRACTOR MUST ENSURE THAT ALL DUCTS ARE CLEANED, RODDED AND THAT A 6MM (1/4") POLYPROPYLENE ROPE IS LEFT IN EACH DUCT.

6
E002SP
N.T.S.



7
E002SP
N.T.S.



OTTAWA-CARLETON
DISTRICT SCHOOL BOARD

ISSUE NO.	REV.	DATE	ISSUE
2	0	2019/12/09	ISSUED FOR SITE PLAN CONTROL COMMENTS 01
1	0	2019/07/25	ISSUED FOR SITE PLAN CONTROL

THE ENGINEER WAIVES ANY AND ALL RESPONSIBILITY AND LIABILITY FOR PROBLEMS WHICH ARISE FROM FAILURE TO FOLLOW THESE PLANS, SPECIFICATIONS AND THE DESIGN INTENT THEY CONVEY, OR FOR PROBLEMS WHICH ARISE FROM OTHER FAILURE TO OBTAIN AND / OR FOLLOW THE ENGINEER'S GUIDANCE WITH RESPECT TO ANY ERRORS, OMISSIONS, INCONSISTENCIES, AMBIGUITIES OR CONFLICTS WHICH ARE ALLEGED.

THIS DRAWING IS THE PROPERTY OF GOODKEY WEEDMARK & ASSOCIATES LIMITED AND ALL COPYRIGHTS ARE RESERVED. NO USE OF THIS DRAWING MAY BE MADE WITHOUT EXPRESS WRITTEN CONSENT.

DO NOT SCALE DRAWINGS.

L'INGÉNIEUR DÉCLINE TOUTE RESPONSABILITÉ DÉCOULANT DE PROBLÈMES FAISANT SUITE AU NON RESPECT DES PLANS, DEVIS ET DE L'INTENTION DU CONCEPT QU'ILS INDICENT OU DE TOUTES LES PROBLÈMES PROUVANT RÉSULTER DU DÉFAUT D'OBTENIR ET / OU DE SUIVRE LES CONSEILS DE L'INGÉNIEUR EN CE QUI CONCERNE LES ERREURS, OMISSIONS, INCONSISTANCES, AMBIGUITÉS OU CONFLITS ALLEGUÉS.

CE DESSIN EST LA PROPRIÉTÉ LITTÉRAIRE DE GOODKEY WEEDMARK & ASSOCIATES LIMITED ET TOUS LES DROITS SONT RÉSERVÉS. L'UTILISATION EST INTERDITE SANS LE CONSENTEMENT ÉCRIT DE L'AUTEUR.

NE PAS MESURER LES DESSINS À L'ÉCHELLE.

Goodkey Weedmark
Consulting Engineers

GOODKEY WEEDMARK & ASSOCIATES LIMITED
1688 Woodward Dr.
Ottawa Ontario
Canada K2C 3R8

613 727-5111 Voice
613 727-5115 Fax
www.gwal.com Web

Seal/Scelo

LICENSED PROFESSIONAL ENGINEER
D.B. VYAS
100133120
Dec 9, 2019
PROVINCE OF ONTARIO

TRUE NORTH PLAN NORTH

EDWARD J CUHACI
& ASSOCIATES ARCHITECTS Inc.
171 Slater St, Suite 100, Ottawa, Ontario, K1P 5H7
Fax: (613) 236-1944 Telephone: (613) 236-7135 E-mail: info@cuhaci.com

PROJECT/TITRE DU PROJET
NEW STITTVILLE HIGH SCHOOL
700 COPE DRIVE
OTTAWA, ONTARIO

OTTAWA - CARLETON DISTRICT SCHOOL BOARD
NEPEAN, ON K2H 6L3
133 GREENBANK ROAD

DRAWING/TITRE DU DESSIN
ELECTRICAL SITE PLAN

SCALE	PROJ. No	ISSUE No	REV. No
ECHELLE	AS NOTED	2019-153	2
DRAWN BY	J. GUAN	DRAWING/DESSIN	
CHECKED BY	D. VYAS		
DATE	JULY 2019		

E002SP