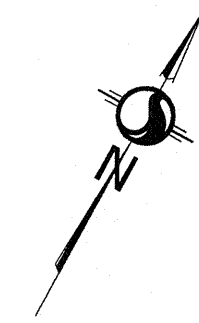
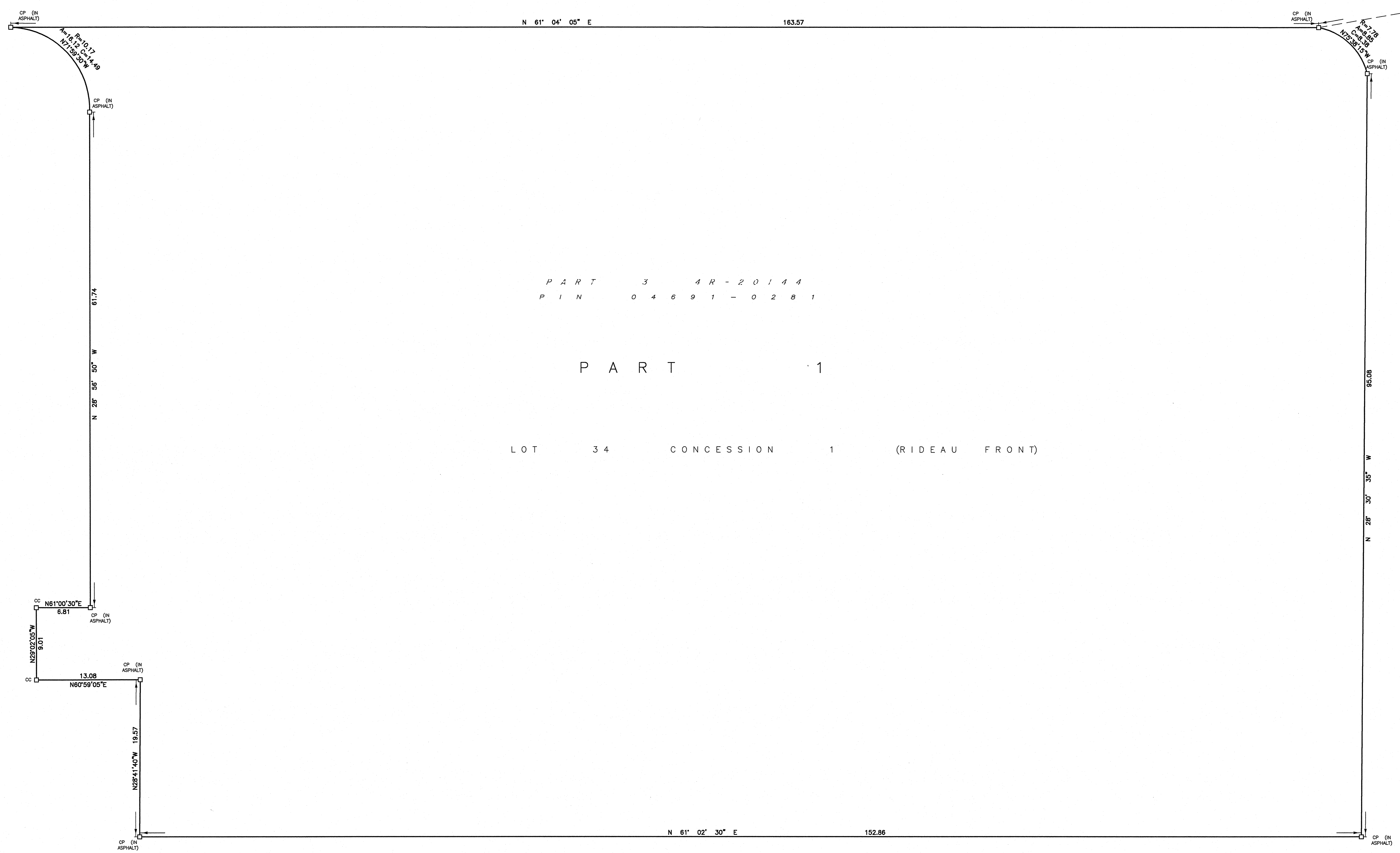


19 June 2019 12:58 PM



PART 3 4R-20144
PIN 04691-0281
LOT 35 CONCESSION 1 (RIDEAU FRONT)

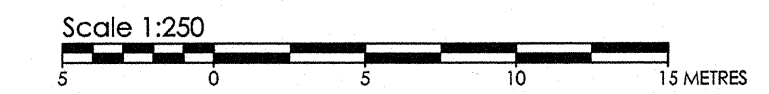
PART 2 4R-20144
SUBJECT TO EASEMENT
INST. L.T. 012354
PART 7 4R-19116
PIN 04691-0258



PART 3 4R-20144
PIN 04691-0281

PART 1
LOT 34 CONCESSION 1 (RIDEAU FRONT)

PLAN OF SURVEY OF
**PART OF LOT 34
CONCESSION 1 (RIDEAU FRONT)**
(GEOGRAPHIC TOWNSHIP OF NEPEAN)
CITY OF OTTAWA



METRIC CONVERSION
DISTANCES AND COORDINATES SHOWN ON THIS PLAN ARE IN METRES
AND CAN BE CONVERTED TO FEET BY DIVIDING BY 0.3048

GRID SCALE CONVERSION
DISTANCES ARE GROUND AND CAN BE CONVERTED TO GRID BY MULTIPLYING
BY THE COMBINED SCALE FACTOR OF 0.999939.

BEARING NOTE
BEARINGS ARE GRID, DERIVED FROM CAN-NET VRS NETWORK GPS
OBSERVATIONS ON NCC HORIZONTAL CONTROL MONUMENTS 19773035
AND 19680191, CENTRAL MERIDIAN, 76° 30' WEST LONGITUDE MTM ZONE 9,
NAD83 [ORIGINAL].
19773035 N:5006060.42 E:324888.04
19680191 N:5033564.26 E:388064.94

LEGEND

DENOTES	FOUND MONUMENTS
■	SET MONUMENTS
□	IRON BAR
IB	ROUND IRON BAR
IBØ	STANDARD IRON BAR
SB	SHORT STANDARD IRON BAR
SSB	CUT CROSS
CC	CONCRETE PIN
CP	WITNESS
WIT	IDENTIFICATION NUMBER
PIN	MEASURED
M/MEAS	PROPORTIONED
PROP	ORIGIN UNKNOWN
OU	STANTEC GEOMATICS LTD.
STANTEC	

SURVEYOR'S CERTIFICATE
I CERTIFY THAT:
1. THIS SURVEY AND PLAN ARE CORRECT AND IN ACCORDANCE WITH THE SURVEYS
ACT, THE SURVEYORS ACT AND THE LAND TITLES ACT AND THE REGULATIONS MADE
UNDER THEM.
2. THE SURVEY WAS COMPLETED ON THE 19th DAY OF JUNE, 2019.

June 20/19
DATE
B. J. Webster
BRIAN J. WEBSTER
ONTARIO LAND SURVEYOR

Stantec Geomatics Ltd.
CANADA LANDS SURVEYORS
ONTARIO LAND SURVEYORS
131 GUYE AVENUE, SUITE 400
OTTAWA, ONTARIO, K2C 3G4
TEL: 613-722-4400
stantec.com

DRAWN: NJ | CHECKED: BW | PLOT: BW | FIELD: ES | PROJECT No.: 161613988-211